


2018

SUPER DUTY





The die is cast for other heavy-duty pickups to try and follow. Tough keeps getting tougher. Introducing the 2018 Ford F-Series Super Duty. This year, a new F-450 4x2 model hits the ground towing a best-in-class¹ 34,000 lbs.² An all-new LIMITED, the most luxurious, technologically advanced Super Duty ever, debuts. They join a lineup that includes a heavy-duty pickup with the government's highest safety rating – a 5-star overall crash vehicle score.³ Super Duty excels at taking Built Ford Tough® to new extremes.

As America's best-selling truck for 41 years, Ford F-Series is engineered to help you get the job done when no one else can. Nowhere is that better exemplified than here. In the legendary work ethic of Super Duty. F-250. F-350. F-450. Rock solid. Reporting for duty.

2018 SUPER DUTY.

2018 Super Duty® | ford.com

F-350 XL Crew Cab DRW 4x2. Oxford White. STX Appearance Package and available equipment. ¹Class is Full-Size Pickups over 8,500 lbs. GVWR, based on Ford segmentation. ²When properly configured. See towing chart on page 30 for maximum ratings by configuration. ³5-star safety ratings apply to 2017 F-250 SuperCab and Crew Cab 4x2 models only. Government 5-Star Safety Ratings are part of the National Highway Traffic Safety Administration's (NHTSA's) New Car Assessment Program (www.SaferCar.gov).

Vehicles throughout this PDF may be shown with optional and aftermarket upfit equipment and without standard antenna.





BUILT FORD TOUGH.[®]

It's astounding what an F-Series Super Duty will haul over its lifetime. Cinder block. Stumps. Pipe. Tools. Machinery. Landscaping material. Generators. 5th-wheel/gooseneck trailers. So we've made the frame and cargo box of Super Duty ready for your toughest challenges.

Its fully boxed ladder frame – made of 95% high-strength steel – is more than up to the task. Up to 24 times stiffer than the previous generation – it helps to produce the best ride and steering of any Super Duty ever. Through-welded, closed-section crossmembers also help increase torsional stiffness. And an e-coat paint process encases all that strength for extreme durability and corrosion protection.

The first-and-only cargo box in its class made from high-strength, military-grade, aluminum alloys¹ is anchored to that frame. It doesn't rust. It's more dent- and ding-resistant than the previous generation. And the weight savings it generated (up to 350 lbs.) allowed us to upgrade essential components – the frame, axles, leaf springs, transfer case, driveline and trailer hitches.

**TESTING PRODUCES ENDURANCE.
HERE'S YOUR PROOF.** With over 12 million cumulative miles of customer-equivalent testing logged, the 2018 Super Duty is engineered for extremes. We torture it. In the engine lab, on the proving grounds, and working in the real world. Our dedicated team of truck engineers run it with maximum trailer weights. Up and down steep grades. Then up and down again. In stifling heat above 100°F. And in subzero cold. Rest assured, it's Built Ford Tough® In every way that matters.



5-STAR SAFETY The 2017 F-250 Super Duty SuperCab and Crew Cab 4x2 models have earned the government's highest safety rating – a 5-star overall crash vehicle score.¹ All Super Duty pickup trucks feature 6 standard airbags, including the side-curtain airbags of the Safety Canopy® System.



2018 Super Duty® | ford.com

F-250 XLT SuperCab 4x2. Ruby Red. Available equipment. ¹Government 5-Star Safety Ratings are part of the National Highway Traffic Safety Administration's (NHTSA's) New Car Assessment Program (www.SaferCar.gov).





FIRST-IN-CLASS

HIGH-STRENGTH, MILITARY-GRADE, ALUMINUM ALLOYS
/ INFLATABLE REAR-SEAT OUTBOARD SAFETY BELTS¹

BEST-IN-CLASS

34,000 LBS. MAX. TOWING CAPACITY²
/ 21,000 LBS. MAX. CONVENTIONAL TOWING CAPACITY²
/ 7,630 LBS. MAX. PAYLOAD CAPACITY² / 42,800 LBS.
MAX. GROSS COMBINED WEIGHT RATING (GCWR)²
/ 935 LB.-FT. OF DIESEL TORQUE / 450 DIESEL HP
/ 430 LB.-FT. OF GAS TORQUE

CLASS EXCLUSIVE

UP TO 7 AVAILABLE CAMERAS¹ / ADAPTIVE STEERING¹
/ ADAPTIVE CRUISE CONTROL AND COLLISION WARNING
WITH BRAKE SUPPORT¹ / FACTORY-INSTALLED
CUSTOMER-PLACED TRAILER CAMERA¹ / LED SIDEVIEW
MIRROR SPOTLIGHTS¹ / MULTICONTOUR FRONT SEATS
WITH ACTIVE MOTION^{®1} / POWER-DEPLOYABLE
RUNNING BOARDS¹ / BLIS[®] WITH TRAILER COVERAGE
AND CROSS-TRAFFIC ALERT¹ / POWERSCOPE[®]
POWER-TELESCOPING/-FOLDING TRAILER TOW MIRRORS¹
/ REMOTE TAILGATE LOCK AND RELEASE¹ / SMART
TRAILER TOW CONNECTOR¹ / STANDARD FLAT LOAD
FLOOR INSIDE³ / COLLAPSIBLE UNDER-SEAT STORAGE^{1,4}
THAT FOLDS INTO FLAT LOAD FLOOR / TAILGATE STEP¹ /
TRAILER REVERSE GUIDANCE¹ / INDIVIDUAL TRAILER
TIRE PRESSURE MONITORING SYSTEM¹

2018 Super Duty[®] | ford.com

F-250 LARIAT Crew Cab 4x4. Blue Jeans. Chrome Package. Available equipment. ¹Available feature. ²When properly configured. See charts on page 29-30 for maximum ratings by configuration. ³SuperCab and Crew Cab. ⁴Crew Cab only.



THE ALL-NEW SUPER DUTY LIMITED
**THE MOST LUXURIOUS,
TECHNOLOGICALLY ADVANCED
SUPER DUTY EVER.**





Introducing the new 2018 Super Duty LIMITED. The most luxurious, technologically advanced Super Duty ever. LIMITED comes ready to work with the 6.7L Power Stroke® V8 Turbo Diesel, electronic shift-on-the-fly 4WD, and Ultimate Trailer Tow Camera System all standard. As well as a truckload of amenities that only enhance the Super Duty underneath. A unique satin-aluminum finish on the grille, door handles and tailgate appliqué, plus 20" polished aluminum wheels,¹ announce its arrival. Power-deployable running boards extend to greet your feet. Door-sill scuff plates with backlit LIMITED lettering usher the way inside, where multicontour front seats feature Active Motion® massage and LIMITED badging. Camelback two-tone premium luxury leather trims the heated and cooled 10-way power front seats, the heated steering wheel, and the center console lid. A Miko® headliner and twin-panel moonroof cover the cab, ambient lighting covers the mood, while a 10-speaker Audio System from Sony® handles the sound. A VIN plate on the center console lid reminds you of how unique your truck really is. Step up to the new Super Duty LIMITED.



ITS NUMBERS PUSH, PULL AND SPEAK FOR THEMSELVES. The output of the 6.7L Power Stroke® V8 Turbo Diesel engine¹ speaks volumes to loggers, landscapers, miners, oil field workers and everyone else who rely on it daily. This proven diesel is paired with an equally rugged TorqShift® 6-speed automatic transmission. Both are designed, engineered and built by Ford. Together, they deliver its highest combination of horsepower and torque ever. Twin-pilot injection delivers smooth, quiet acceleration. Large fuel tanks – up to 48 gallons maximum² – help extend driving range. Plus, a driver-controlled engine exhaust brake with on, off and auto settings allows use of engine braking to help slow the truck down and control vehicle speed. The most tested Power Stroke diesel ever is also B20-capable. And right where it belongs in the 2018 Super Duty.

CLASS-BEST
935 | 450
LB.-FT. | HORSE
TORQUE | POWER



ROBUST HIGH-ALTITUDE PERFORMANCE comes courtesy of the high airflow supplied by the diesel's variable geometry turbocharger. Tuned specifically for this application, the turbocharger forces air into the cylinders to enhance performance, helping to deliver maximum power quickly.

EXCELLENT THROTTLE RESPONSE is delivered in part by a high-pressure, common rail fuel injection system. The fuel pump develops up to 29,000 psi operating pressure, and piezo-controlled fuel injectors provide precise injection. This combination yields superior fuel atomization, delivering excellent throttle response.

STRENGTH AND INTEGRITY of the 6.7L diesel is maintained by a masterful mix of component materials. Compacted graphite iron (CGI) imparts strength and durability to the deep-skirt engine block, while reducing weight. Cylinder heads made of aluminum help to further reduce weight and feature a 6-head-bolt-per-cylinder design to help improve sealing and maintain cylinder integrity.



CLASS OF ITS CLASS. 6.2L GAS.

The Built Ford Tough® 6.2L 2-valve V8 delivers the most torque of any gas engine in the class. Designed, engineered, built and torture-tested by Ford, the standard engine on F-250 and F-350 Super Duty is also E85-capable. By supplying working power throughout the rpm range, the 6.2L V8 delivers an exceptional combination of driveability, hauling and towing performance.

Alternative fuel options include a CNG/Propane Gaseous Engine Prep Package that readies Super Duty to be upfit for compressed natural gas (CNG) or propane autogas. Super Duty models equipped with the 6.2L engine can be converted to a bi-fuel vehicle with the ability to switch between CNG or propane and gasoline. Providing flexibility and extended range, trucks upfit to a bi-fuel system include a tank for each type of fuel. By purchasing a Super Duty upfit for CNG or propane, you may even qualify for state incentives related to alternative fuel use, infrastructure or vehicles. Visit www.afdc.energy.gov/afdc/laws for details.



CLASS-BEST GAS

430
LB.-FT.
TORQUE

385
HORSE
POWER

LOADS OF LOW-RPM TORQUE help ease your heavy-duty workload. A stiff SOHC valvetrain with roller-rocker shafts enables an intake- and exhaust-port layout that optimizes airflow, helping the 6.2L V8 produce gobs of torque down low.

IRON-CLAD DURABILITY of the gas engine block stems from reliable cast-iron construction, with 4-bolt main bearing caps, including 2 additional cross bolts. Piston-cooling jets contribute to durability as well by maintaining cooler piston temperatures and improving oil warm-up, especially under heavy-duty operating conditions.

COMBUSTION CYCLE OPTIMIZATION is achieved through the gas engine's dual-equal variable cam timing. It phases the intake- and exhaust-valve opening and closing events simultaneously to optimize low-end torque and peak horsepower. Using 2 spark plugs per cylinder also helps the fuel air mixture burn efficiently, contributing to engine torque.



WE PUT TORQUE RIGHT IN THE NAME. FOR GOOD REASON.

The TorqShift® 6-speed SelectShift® automatic transmission handles a lot of it, whether mated to the torque-rich diesel engine¹ or powerful gas engine. Tow/haul mode helps either engine deliver smooth, efficient performance. A multi-segment clutch friction-plate design optimizes oil flow, reduces power loss and maximizes transmission productivity, while a high-efficiency fluid filter has a fluid change interval of 150,000 miles.

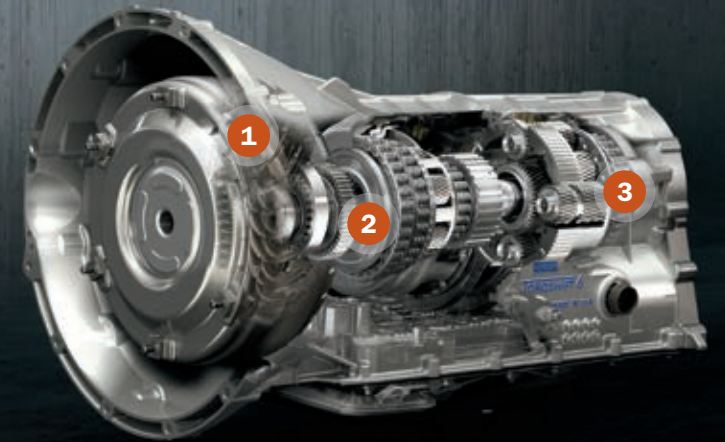
For weight savings and efficiency, we even right-sized a TorqShift-G 6-speed SelectShift automatic transmission with tow/haul mode for Super Duty F-250 models with the gas engine. And since Super Duty engines and transmissions are all designed and built by Ford, each powertrain works seamlessly with chassis components and vehicle calibrations.



THE TORQSHIFT TRANSMISSION WITH SELECTSHIFT capability delivers smooth, efficient performance on the road. SelectShift allows for manual upshift and downshift capability.

Progressive range select mode lets you reduce the available gear range in difficult road/load conditions.

To eliminate unwanted frequent gear-shifting on steep uphill grades, select tow/haul mode, which also allows engine braking to help maintain vehicle speed when descending that grade.



1. 3-PLATE, 2-STAGE TORQUE CONVERTER handles substantial horsepower and torque forces from the 6.7L Power Stroke® V8 Turbo Diesel, and helps both engines work efficiently at low rpm thanks, in part, to low-speed lockup capability (down to 900 rpm).²

2. LIVE-DRIVE POWER TAKEOFF PROVISION¹ is directly linked to the crankshaft, so the PTO output gear delivers power anytime – whether the vehicle is moving or not. With both engines, the TorqShift transmission provides stationary and mobile-mode PTO capability.

3. SINTER-BRAZED PINION CARRIERS help manage the diesel's extreme low-end torque, as well as the high shift speeds of the gas engine. When teamed with a gasoline engine, the transmission features up to 4-pinion front carriers and 6-pinion rear. Diesel models feature up to 6-pinion carriers in front and up to 8-pinion carriers in the rear.

EVEN THE DIRT WILL BE IMPRESSED.

It has the best vantage point to see the improvements¹ made to the underpinnings that allow Super Duty to carry the weight of your world on its shoulders. Built Ford Tough® Twin I-Beam (4x2 models) and twin-coil monobeam (4x4 models) front suspensions: shocks, radius arms, springs, larger lower bushings and upgraded stabilizer bars, all optimized for increased capability.¹ Rear suspension: shocks, bushings and re-engineered leaf springs, upgraded and optimized for improved stance under load.¹ Brake master cylinder on F-450: larger,¹ for less brake fade under extreme braking conditions. Trailer hitch receivers: bigger, stronger with more weight-carrying capability.¹ Super Duty can get down and dirty.

AXLES ARE STRONGER and more capable.¹ Gear and bearing designs have been re-engineered, and optimized by weight to be more efficient than their predecessors. Rear axles on DRW trucks have more weight-carrying and towing capability than the previous generation.

DRIVESHAFTS, TRANSFER CASES AND U-JOINTS were upgraded¹ to handle the increased torque output of both Super Duty engines. An electro-magnetic clutch in the transfer case provides smooth and immediate shift-on-the-fly 4WD capability² in conditions where additional traction is required.

STANDARD TRAILER HITCHES are larger¹ with increased ratings to handle heavier loads and, on many configurations, are now weight-carrying³ up to the trailer hitch ratings. Hitch receiver size has also been increased,¹ and reducers are provided to cover your towing needs.

WHO TOWS YOUR BABY LIKE SUPER DUTY. NO ONE.

The 2018 F-Series Super Duty F-450 4x2 features best-in-class max. towing of a whopping 34,000 lbs.¹ Super Duty F-350 DRW models feature best-in-class max. conventional towing of 21,000 lbs.¹ So if you need to tow up to 17 tons, you'll be driving a Super Duty. It's optimized for heavy hauling. Helping you pull the most weight¹— and doing it with confidence.

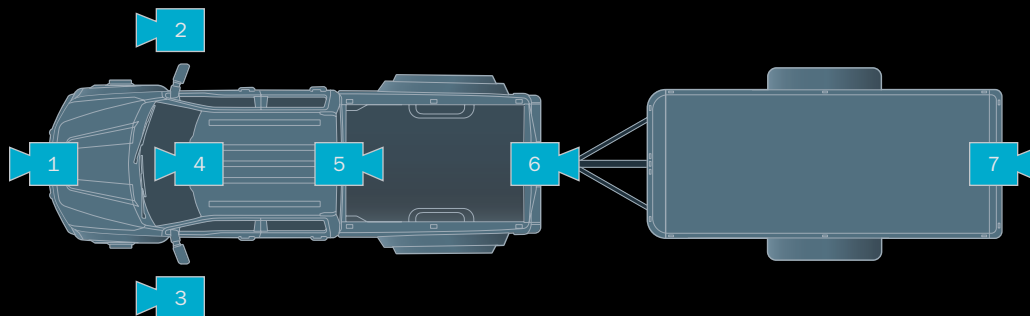


**CLASS-BEST
34,000 LBS.**

To help you better handle what's in tow, Super Duty provides you with an inspiring level of towing confidence with even the largest loads. Smart technology helps make towing easier than ever: Cameras^{1,2} not only aid in hooking up your trailer, but in maneuvering it as well, and an 8" productivity screen¹ in the instrument cluster relays vital information to keep you in the know.

TRAILER-TOWING PROFICIENCY is possible with the advanced towing technology of Ford Super Duty. Strategically placed cameras^{1,2} help you see all around Super Duty. And when hooking up a trailer or navigating it through a crowded job site, what you see can make all the difference. You'll also glean vital information from the 8" color LCD productivity screen¹ in the instrument cluster. If there's a problem, you'll be notified.

1. Front 180-degree camera view.³
2. 360-degree camera with Split-View Display.¹
3. CHMSL camera view.¹
4. Trailer Reverse Guidance^{1,2} automatically switches between side and rear camera views to show you what is most relevant while backing up your trailer, and even provides overlays to guide you.
5. A class-exclusive Individual Trailer Tire Pressure Monitoring System¹ can monitor and display the individual tire pressures of a connected trailer, and alert you if any tire's pressure is low. A numerical value will even tell you how low.
6. Diesel Exhaust Fluid (DEF) tank status screen.¹



1. **A FRONT 180-DEGREE CAMERA** with washer^{2,3} not only helps to see ahead, but around tight corners as well. It can see to the left and right before you have a line of sight, displaying a view around corners, down alleys and out of parking spots as you slowly drive forward.
- 2,3. **A CAMERA IN EACH SIDEVIEW MIRROR**^{2,3} along with the front and rear cameras, generates a 360-degree view. This all-around view of Super Duty is displayed on the 8" color LCD screen¹ in the center stack of the instrument panel.
4. **A FORWARD-FACING CAMERA**¹ is utilized by lane-keeping alert.^{1,2,4} It can detect lane markings and send vibration pulses to the steering wheel if it senses Super Duty drifting out of its lane.
5. **A CENTER HIGH-MOUNTED STOP LAMP (CHMSL) CAMERA**¹ with zoom function helps provide greater visibility of the cargo in the cargo box while in Reverse (shown above in photo 3), and is particularly helpful when connecting a 5th-wheel/gooseneck trailer.
6. **A REAR VIEW CAMERA**² with zoom function, mounted in the tailgate handle, provides a view of what's behind Super Duty and helps in the hookup of conventional trailers. It is one of the cameras used by the 360-degree camera with Split-View Display.¹
7. **A CUSTOMER-PLACED TRAILER CAMERA**¹ can be attached to the rear of your trailer. It shows you what's behind the trailer when backing up, and it's weatherproof. The image can be accessed on the 8" color LCD screen¹ in the center stack.



HAUL MORE THAN ANYONE ELSE. After surviving countless hours of punishment at the hands of Ford engineers, the only high-strength, military-grade, aluminum alloy cargo box in its class is reporting for duty. Super Duty. Best-in-class max. payload of 7,630 lbs.¹ can sit inside its walls. For good reason. Panel thickness of the cargo box: upgraded vs. the previous generation. Reinforcements underneath the box: fortified. Dent-and-ding resistance inside the box: better than steel. Susceptibility to red rust: gone. So load up. And head out.



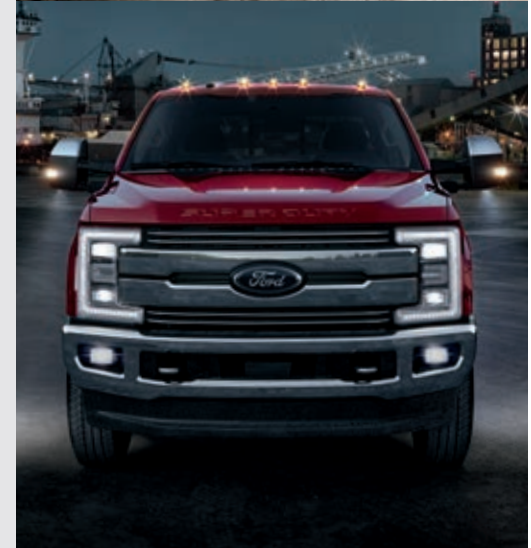
**CLASS-BEST
7,630 LBS.
MAX. PAYLOAD¹**



Day or night, Super Duty provides the tools you need to finish any job. Class-exclusive LED sideview mirror spotlights¹ can light your work site well into the night. They join quad-beam LED headlamps¹ and LED taillamps.¹ LED box lighting¹ smartly illuminates the cargo box with forward-facing lights. Turn them on with the button in the bed or with the headlamps control in the cab.

First-in-class remote tailgate release¹ with power remote locking opens the tailgate with your key fob. Lock, unlock and lower it, hands-free. When activated, the tailgate gradually lowers to a flat position. Enjoy easy payload access thanks to extended-length step bars¹ that reach to the sides of the cargo box, as well as our class-exclusive tailgate step.¹ Fully integrated inside the tailgate, the skid-resistant step drops down in one easy motion when needed. With it down, just flip up the sturdy grab handle and walk right into the bed.

Class-exclusive BoxLink™ with locking cleats¹ helps keep your cargo in place. Load dirt bikes and ATVs with ease thanks to class-exclusive stowable loading ramps.¹ When finished, stow the ramps with the BoxLink system.



The 2018 F-Series Super Duty is loaded with convenient driver-assist features.¹ Sophisticated radar.¹ And strategically placed cameras.¹ They're at your service to help you navigate a crowded job site, avoid a collision, stay in your lane, and tow more than you ever thought possible. Class-exclusive adaptive cruise control^{1,2} makes handling all that weight seem almost effortless, while adaptive steering^{1,2} makes parking easier at your destination.



1. ADAPTIVE CRUISE CONTROL^{1,2} helps maintain your choice of speed and preset gaps from the vehicle in front of you. It can also alert you to a potential collision. If one is detected, adaptive cruise control and collision warning with brake support^{1,2} flashes a warning via a heads-up display on the windshield, sounds an alarm, and can pre-charge the brake system to provide full responsiveness when you do brake.

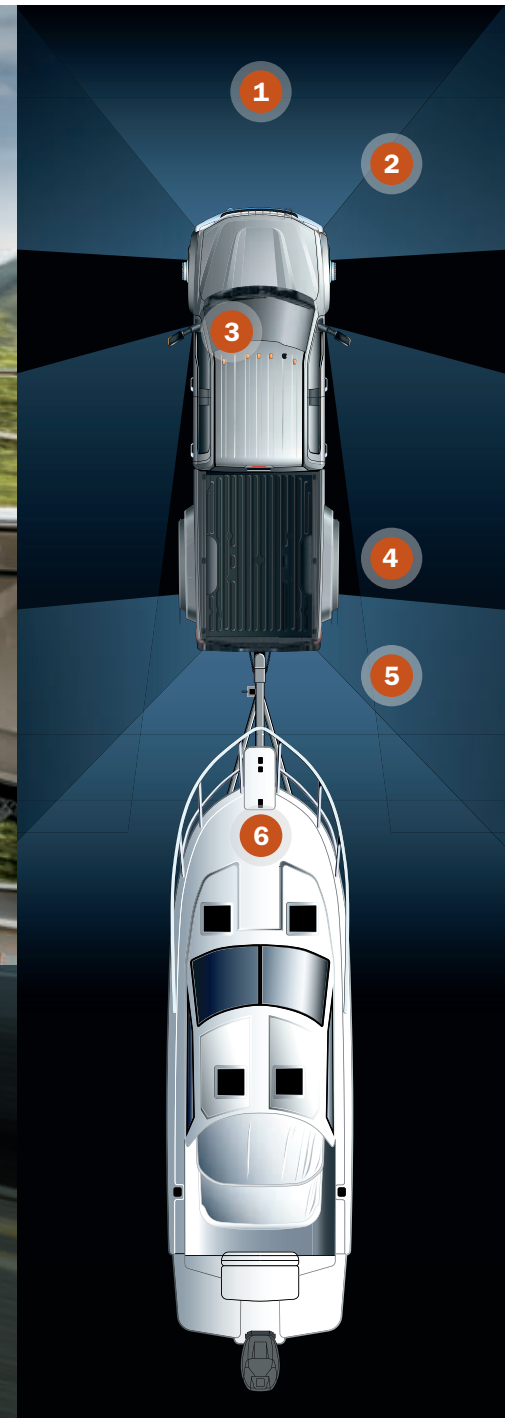
2. LANE-KEEPING ALERT^{1,2,3} can detect lane markings and send vibration pulses to the steering wheel if it senses Super Duty drifting unintentionally out of its lane.

3. FIRST-IN-CLASS ADAPTIVE STEERING^{1,2} adapts to different driving conditions and reduces the amount of steering input needed, depending on speed and load. This helps make Super Duty more manageable to drive, especially with a load in tow. Backing up, trailering, and parking lot maneuvering is easier than the previous generation.

4. ADVANCETRAC[®] WITH RSC[®] (ROLL STABILITY CONTROL[™])⁴ utilizes 2 gyroscopic sensors to automatically help you avoid skidding and fishtailing, helping you keep all wheels firmly planted. AdvanceTrac is standard on every Super Duty - including DRW models - helping to increase your confidence while hauling heavy loads.

5. BLIS[®] (BLIND SPOT INFORMATION SYSTEM) WITH TRAILER COVERAGE^{1,2} notifies you with a light in either sideview mirror if its radar sensors detect a vehicle in the corresponding blind spot. The system has been optimized for Super Duty to extend the range of BLIS to include a conventional trailer, once programmed into the productivity screen.

6. TRAILER SWAY CONTROL⁴ helps you handle all that weight when towing. The system monitors the motions of the truck to detect trailer sway and selectively brakes as needed, helping you maintain control of the truck and the trailer.



Until the blacktop is down on a job site, you've got to get your heavy equipment and tools through mud, sand and difficult terrain. Thankfully, on Super Duty 4x4 models with electronic shift-on-the-fly, engaging 4WD is as simple as setting the proven manual-locking front hubs to AUTO and turning a dial on the instrument panel. In the 2018 Ford Super Duty, you're well-prepared to conquer the toughest terrain.



THE OFF-ROAD DISPLAY in the Super Duty 8" productivity screen¹ allows you to monitor the truck's pitch, roll, steering angle and driveline status¹ in conditions where additional traction is required.

ADD THE FX4 OFF-ROAD PACKAGE to increase your off-road capability. Transfer case and fuel tank skid plates, Hill Descent Control,[™] and off-road-tuned shocks help get you ready for serious, low-speed crawling. An electronic-locking rear differential¹ (SRW models) uses a true mechanical dog-clutch mechanism to lock the rear axle shafts together so they turn at the same speed for maximum gripping power.





TO KEEP YOU HIGHLY PRODUCTIVE, smart storage is everywhere in Super Duty. Even under the rear seat. First, on Crew Cab models, deployable under-seat storage¹ can fold into the floor when not in use for a convenient flat load floor. When needed, the deployable partition raises up for helpful storage that can be divided and locked when the seat is folded down. Two glove boxes include a unique upper compartment for additional storage space. And the deep front center console¹ is large enough for hanging file folders. It's an open-and-shut case on work-site productivity.



The 8" color LCD productivity screen¹ in the Super Duty instrument cluster is your command center. Unique Super Duty screens include a digital turbo gauge for the 6.7L Power Stroke[®] V8 Turbo Diesel engine¹; and a DEF gauge.² Choose your favorites (up to 7) and arrange them in the customized MyView menu for your convenience.



APPLE CARPLAY™ COMPATIBILITY⁴

Use Siri to interact with your iPhone
Access your favorite songs and playlists in Apple Music®
Use Apple Maps for voice-guided navigation and estimated travel time



SYNC APPLINK®^{2,5}

Voice control for your favorite compatible mobile apps
Spotify® ▪ Pandora® ▪ and more



ANDROID AUTO™ COMPATIBILITY⁴

Talk to Google™ to interact with your Android™ smartphone
Access your favorite music through your apps
Utilize Waze™ or Google Maps™ for voice-guided navigation and estimated travel time



FORDPASS™ SMARTPHONE APP³

Your personal journey assistant
Find fuel and compare prices
Find, reserve and pay for parking in select locations
Get help from our trained team of Ford Guides – available 24/7



VOICE-ACTIVATED NAVIGATION²

Turn-by-turn directions
Vivid 3-D maps
Pinch-to-zoom touchscreen capability



SIRIUSXM® TRAFFIC & TRAVEL LINK®^{2,6}

Complimentary for 5 years
Real-time traffic updates
Fuel station locations and prices
Current and forecasted weather
Movie locations and showtimes
Sports scores

SYNC 3

STAY CONNECTED ON THE MOVE.

Imagine controlling calls, music and more with just a touch and your voice. SYNC® 3^{1,2} lets you keep your hands on the wheel while it quickly responds to your spoken requests. Or use the responsive touchscreen in the center of your instrument panel to access its many helpful features. Bring the power of Siri® into Super Duty with Siri Eyes Free and your paired iPhone®. The system also features 2 smart-charging USB ports to help keep your devices powered up and ready to go.



F-250

F-350

F-450

Max. Towing ¹	18,500 lbs.	32,000 lbs.	BEST-IN-CLASS 34,000 lbs.
Max. Conventional Towing ¹	18,000 lbs.	BEST-IN-CLASS 21,000 lbs.	BEST-IN-CLASS 21,000 lbs.
Max. Payload ¹	4,250 lbs.	BEST-IN-CLASS 7,630 lbs.	5,600 lbs.
Max. GVWR ¹	10,000 lbs.	14,000 lbs.	14,000 lbs.
Max. GCWR ¹	25,700 lbs.	40,000 lbs.	BEST-IN-CLASS: 42,800 lbs.
Engines	6.2L Gas V8 6.7L Power Stroke® V8 Turbo Diesel	6.2L Gas V8 6.7L Power Stroke V8 Turbo Diesel	6.7L Power Stroke V8 Turbo Diesel
Drivetrains	Single Rear Wheel (SRW) 4x2 or 4x4	SRW or Dual Rear Wheel (DRW); 4x2 or 4x4	DRW 4x2 or 4x4
Cab Types	Regular Cab, SuperCab or Crew Cab	Regular Cab, SuperCab or Crew Cab	Crew Cab
Box Lengths	6¾' or 8'	6¾' or 8'	8'

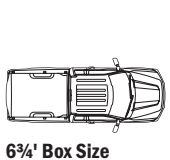
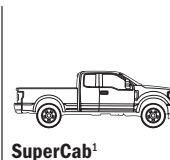
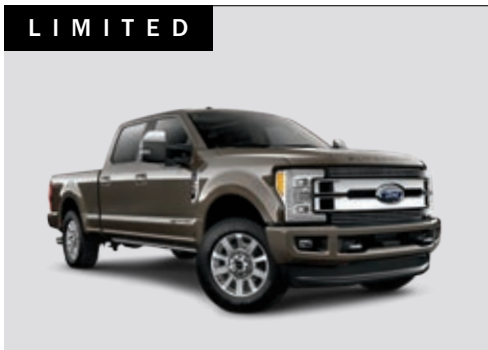
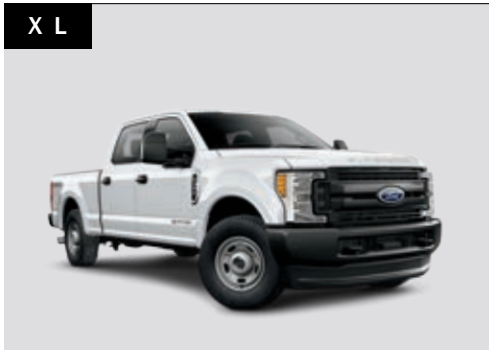


BAD, BADDER, BADDEST.

2018 Super Duty® | ford.com

F-250 XLT Crew Cab 4x4. Magnetic. F-350 LARIAT SuperCab 4x4. Magnetic. F-450 PLATINUM Crew Cab. White Platinum.
All shown with available equipment. ¹When properly configured. See charts on pages 29-30 for maximum ratings by configuration.





STANDARD FEATURES

Mechanical

Axle – Front, narrow-track, twin-coil monobeam (F-250/F-350 4x4)
Axle – Front, narrow-track, Twin-I-Beam (F-250/F-350 4x2)
Axle – Front, wide-track, twin-coil monobeam (F-450)
Electronic shift-on-the-fly transfer case (4x4)
Hydraulic power-assisted steering
Jack – 2-ton mechanical (SRW)
Jack – 4-ton hydraulic (DRW)
Manual locking hubs (4x4)
Oil monitor – Intelligent Oil-Life Monitor® (diesel engine)
Oil monitor – Oil-life minder (gas engine)
Power 4-wheel disc brakes with Anti-Lock Brake System (ABS)
Stabilizer bar – Front
Stabilizer bar – Rear (DRW)
Stationary Elevated Idle Control (SEIC) ¹
Steering damper
Suspension – Front, coil springs
Suspension – Heavy-duty gas shock absorbers
Suspension – Rear, leaf-spring
Trailer sway control

Trailer tow – 2.5" Built Ford Tough® trailer hitch receiver with 2"-2.5" sleeve reducer (F-250; F-350 SRW with gas engine; F-350 SRW Regular Cab/SuperCab with diesel engine)

Trailer tow – 3.0" Built Ford Tough trailer hitch receiver with 2"-2.5" and 2.5"-3" sleeve reducers (F-350 SRW Crew Cab with diesel engine; DRW)

Trailer tow – 7-wire harness with relays and 7-/4-pin connector (F-250/F-350)

Trailer tow – 7-/4-pin connector (F-450)

Interior

12V powerpoints, 2 in instrument panel
Air conditioning
Cabin air filter
Coat hooks
Dash-top tray
Driver and front-passenger grab handles, and rear-passenger on Crew Cab
Illuminated and lockable glove boxes (2)
Lighting – Dome light
Lighting – Dual map lights (front on Regular Cab/SuperCab; front and rear on Crew Cab)
Outside temperature display
Overhead console with dual storage bins (SuperCab/Crew Cab)

Exterior

Configurable daytime running lamps
Doors – 2 (Regular Cab)
Doors – 4 (SuperCab/Crew Cab)
Front fender vents
Front license plate bracket
Front tow hooks, 2
Lighting – 3-blink lane change signals
Lighting – Center high-mounted stop lamp (CHMSL) with cargo lamp
Lighting – LED roof marker/clearance lamps (DRW)
Pickup box – Box rail and tailgate moldings
Pickup box – Partitionable and stackable
Pickup box – Tie-down hooks (4 with 6¾' box; 6 with 8' box)
Removable tailgate with key lock
Underhood service lamp
Variable-intermittent windshield wipers with washers

Driver-Assist Technology

Autolamp automatic on/off headlamps with rainlamp feature
Hill start assist

Safety & Security

Driver and right-front-passenger front and front-seat side airbags ²
Front-passenger airbag deactivation switch (Regular Cab and SuperCab)
Safety Canopy® System with side-curtain airbags ² and rollover sensor
AdvanceTrac® with RSC® (Roll Stability Control™)
Belt-Minder® front safety belt reminder
Child-safety-seat top tether anchors (Regular Cab front passenger, and all rear-seat positions)
Front height-adjustable shoulder safety belts
Individual Tire Pressure Monitoring System (F-250/F-350, excludes spare)
MyKey® technology to help encourage responsible driving
Rear view camera with dynamic hitch assist
SecuriLock® Passive Anti-Theft System
SOS Post-Crash Alert System™

POWER TRAINS / MECHANICAL

	6.7L Power Stroke® V8 Turbo Diesel	6.2L 2-Valve Gas V8 FFV
Configuration	OHV (32-valve)	SOHC
Electronic fuel injection	High-pressure common-rail	Sequential multi-port
Induction system	Single-sequential turbocharger; charged air cooler	Specially tuned
Cooling system	Pressurized series flow	Pressurized series flow
Block material	Compacted graphite iron	Cast iron
Valve operation	Push rod/rocker arms	Roller-rocker shafts
Camshaft drive	Gear	Silent chain
Bore/stroke	3.90"/4.25"	4.02"/3.74"
Compression ratio	16.2:1	9.8:1
Horsepower @ rpm	450 @ 2,800	385 @ 5,750 ³
Torque lb.-ft. @ rpm	935 @ 1,800	430 @ 3,800
Recommended fuel	Ultra-low-sulfur diesel or B20 (containing 20% or less biodiesel)	Regular unleaded or E85; bi-fuel-capable autogas CNG or propane (requires upfit)
Transmission	TorqShift® 6-speed SelectShift® automatic with tow/haul mode	TorqShift-G 6-speed SelectShift automatic with tow/haul mode (F-250) TorqShift 6-speed SelectShift automatic with tow/haul mode (F-350)
Standard availability	F-250/F-350: LIMITED F-450: XL, XLT, LARIAT, KING RANCH®, PLATINUM, LIMITED	F-250/F-350: XL, XLT, LARIAT, KING RANCH, PLATINUM
Optional availability	F-250/F-350: XL, XLT, LARIAT, KING RANCH, PLATINUM	

Front Suspension

Axle (max. rating @ ground) –
5,250 lbs. (F-250/F-350 4x2);
6,000 lbs. (F-250/F-350 w/3.31
axle delete);
6,000 lbs. (F-250/F-350 4x4);
7,000 lbs. (F-450)
Shock absorbers – 1.38" gas type

Rear Suspension

Axle (max. rating @ ground) –
6,200 lbs. (F-250);
7,280 lbs. (F-350 SRW);
9,650 lbs. (F-350 DRW/F-450)
Shock absorbers – 1.38" gas type

Brakes

Rotor diameter (front/rear) –
14.29"/14.29" (F-250/F-350);
15.39"/15.74" (F-450)

Wheels

Number of studs –
8 (F-250/F-350);
10 (F-450)
Bolt-circle diameter –
6.69" (170-mm) SRW;
7.87" (200-mm) F-350 DRW;
8.86" (225-mm) F-450



XL	XLT	LARIAT	KING RANCH®	PLATINUM	LIMITED		XL	XLT	LARIAT	KING RANCH	PLATINUM	LIMITED		XL	XLT	LARIAT	KING RANCH	PLATINUM	LIMITED			
						Mechanical	S	S	S	S	S		Drivetrain – 4x2								Driver-Assist Technology	
S	S	S	S			Axle – Rear, 3.31 non-limited-slip ¹ (SRW with diesel engine)	0	0	0	0	0	S	Drivetrain – 4x4			0	0	0	S		Adaptive cruise control and collision warning with brake support ¹	
P	P	P	P	S	S	Axle – Rear, 3.55 non-limited-slip ¹ (standard on SRW 4x4 with diesel engine and 20" wheels)	0	0					Engine block heater (standard where required)			0	0	S	S		Adaptive steering ¹	
S	S	S	S	S	S	Axle – Rear, 3.55 non-limited-slip (F-350 DRW with diesel engine)	0	0					Engine idle shutdown – 5-minute			P	S	S	S		Automatic high-beam headlamps	
S	S	S	S	S	S	Axle – Rear, 3.73 non-limited-slip (F-250/F-350 with gas engine)	0	0					Engine idle shutdown – 10-minute			0	0	0	0	S	S	BLIS® (Blind Spot Information System) with trailer coverage and cross-traffic alert ¹
0	0	0	0	0	0	Axle – Rear, 3.55 limited-slip ¹ (SRW 4x4 with diesel engine; F-350 DRW with diesel engine)	0	0					Engine idle shutdown – 15-minute									Lane-keeping alert
0	0	0	0	0	0	Axle – Rear, 3.73 limited-slip (F-350 DRW with gas engine)	S	S	S				Engine idle shutdown – 20-minute			P	P	P	S			Rain-sensing windshield wipers
0	0	0	0	0	0	Axle – Rear, 4.10 limited-slip (F-350 DRW with diesel engine)	S	S	S	S	S	S	Fuel tank – 29-gallon (141.6" and 148" WB with diesel engine)			0	S	S	S	S		Reverse Sensing System
0	0	0	0	0	0	Axle – Rear, 4.30 limited-slip (F-450)	0	0					Fuel tank – 34-gallon (141.6" and 148" WB with gas engine; 159.8" and 164.2" WB)	0	S						SYNC® Voice Recognition Communications and Entertainment System with 4.2" color LCD screen in center stack, 911 Assist,® AppLink,® and 1 smart-charging USB port;¹ and AM/FM stereo/single-CD player with MP3 capability	
0	0	0	0	0	0	Axle – Rear, 4.30 limited-slip (F-350 DRW with gas engine)	0	0					Manual transfer case (4x4; deletes standard electronic shift-on-the-fly transfer case)	0	0	S	S	S	S			SYNC 3 with 8" color LCD capacitive touchscreen in center stack, 911 Assist, AppLink, Apple CarPlay™ compatibility, Android Auto™ compatibility, and 2 smart-charging USB ports¹
0	0	0	0	0	0	Axle – Rear, 3.31 electronic-locking¹ (SRW with diesel engine)	0	0	0	0	0	0	Operator-commanded exhaust filter regeneration (diesel engine)									
0	0	0	0	0	0	Axle – Rear, 3.55 electronic-locking¹ (SRW 4x4 with diesel engine)	0	0	0	0	0	0	Power takeoff (PTO) provision with transmission-mounted live-drive and stationary modes¹ (PTO port located on driver's side; split-shaft capability included with diesel engine only; n/a on F-250 with gas engine)									
0	0	0	0	0	0	Axle – Rear, 3.73 electronic-locking (SRW with gas engine)	%	%	S	S	S	S	Spare wheel, tire, lock, frame-mounted carrier and jack (optional with pickup box delete)									
S	S					Alternator – 157-amp heavy-duty¹ (gas engine)	0	0	0	0	0	0	Trailer tow – 5th-wheel hitch, 18,000-lb. rating¹,² (SRW)									
S	S					Alternator – 175-amp heavy-duty¹ (diesel engine)	0	0	0	0	0	0	Trailer tow – 5th-wheel hitch, 27,500-lb. rating¹,² (DRW)									
P	P	S	S	S		Alternator – 200-amp extra-heavy-duty¹ (gas engine)	0	0	0	0	0	0	Trailer tow – Gooseneck dual hitch kit includes one 2 5/16" gooseneck ball, one 3" gooseneck ball, and two safety chain tie-down bars¹,² (F-450)									
P	P	S	S	S		Alternator – 220-amp extra-heavy-duty¹ (diesel engine)	0	0	0	0	0	0	Trailer tow – Gooseneck hitch kit¹,² (F-250/F-350)									
0	0	0	0	0	0	Alternator – 240-amp extra-extra-heavy-duty (gas engine)	%	S	S	S	S	S	Trailer tow – Trailer brake controller with Smart Trailer Tow Connector (standard on DRW)									
P	P	P	P	P	S	Alternator – Dual heavy-duty, 332-amp total¹ (diesel engine)	0	0	0	0	0	0	Upfitter interface module (Fleet only)									
0	0	0	0	0	0	Alternator – Dual extra-heavy-duty, 377-amp total¹ (diesel engine)	0	0	0	0	0	0	Wheel locks (20" wheels only)									
S						Battery – 650-CCA, 72-amp-hr, single (gas engine)																
	S	S	S	S		Battery – 750-CCA, 78-amp-hr, single (gas engine)																
%	%	%	%	%	S	Battery – 750-CCA, 78-amp-hr, dual (standard with diesel engine; optional with gas engine)																



XL	XLT	LARIAT	KING RANCH®	PLATINUM	LIMITED		XL	XLT	LARIAT	KING RANCH	PLATINUM	LIMITED		XL	XLT	LARIAT	KING RANCH	PLATINUM	LIMITED			
						Seating							Interior	S	S	S					Steering column – Manual-tilt/-telescoping	
S						2-way adjustable driver and right-front-passenger head restraints	S						AM/FM stereo with 4 speakers (Regular Cab)			P	S	S	S		Steering column – Power-tilt/-telescoping with memory	
	S	S	S	S	S	4-way adjustable driver and right-front-passenger head restraints	S						AM/FM stereo with 6 speakers (SuperCab/Crew Cab)	S	S						Steering wheel – Black urethane	
S						Heavy-duty vinyl 40/20/40 split front seat with 2-way manual seat adjust, driver's side manual lumbar, and folding armrest with cupholders and storage	P	S					AM/FM stereo/single-CD player with MP3 capability and 4 speakers (Regular Cab)			S	S	S	S		Steering wheel – Color-coordinated leather-wrapped	
O						Cloth 40/20/40 split front seat with 2-way manual seat adjust, driver's side manual lumbar, and folding armrest with cupholders and storage	P	S					AM/FM stereo/single-CD player with MP3 capability and 6 speakers (SuperCab/Crew Cab)			P	S	S	S		Steering wheel – Heated	
O						Heavy-duty vinyl front bucket seats with mini-console and driver's side manual lumbar (Regular Cab only)			S	S	S	S	Audio System from Sony® with AM/FM stereo/single-CD player with MP3 capability, 10 speakers and HD Radio™ Technology					S			Trim accents – Sandalwood film appliqués	
O						Cloth front bucket seats with mini-console and driver's side manual lumbar	O	O	S	S	S	S	Voice-activated Navigation System¹ with integrated SiriusXM Traffic and Travel Link® with 5-year subscription²					S			Trim accents – Khaya wood appliqués	
	S					Cloth 40/20/40 split front seat, center under-seat lockable storage with 12V powerpoint, 2-way manual seat adjust, driver's side manual lumbar, and folding armrest with cupholders and storage	O	S	S	S	S	S	SiriusXM® Satellite Radio¹ with 6-month trial subscription²	O	O	O	O	O	O		S	Trim accents – Black Coarse Ash wood appliqués
						2.3" productivity screen in instrument cluster	S						4.2" LCD productivity screen in instrument cluster¹			O	S	S	S		S	Trim accents – Gradated Dark Ash Swirl wood appliqués
						8" configurable color LCD productivity screen in instrument cluster	P	S					110V/400W power outlet, 1 in instrument panel; also includes 1 rear-facing on the flow-through center console, if equipped¹								S	Trim accents – Black Coarse Ash wood appliqués
	O					Cloth front bucket seats with 8-way power driver seat, 2-way manual passenger seat, driver's side manual lumbar, and flow-through center console with lockable storage and 2 rear-facing powerpoints¹ (SuperCab/Crew Cab)	O	O	S	S	S	S	Accessory delay for power features			S	S	S	S		S	Trim accents – Gradated Dark Ash Swirl wood appliqués
		S	S	S	S	Leather-trimmed heated and cooled 10-way power front bucket seats and flow-through center console with lockable storage and 2 rear-facing powerpoints			P	S	S	S	Ambient lighting			O	O	O	O		O	Universal garage door opener
						Leather-trimmed heated and cooled 10-way power 40/20/40 split front seat, center under-seat lockable storage with 12V powerpoint, and folding armrest with cupholders and storage	S	S					Climate control – Single-zone manual			O	O	O	O		O	Upfitter switches, 6 located in overhead console¹
						Leather-trimmed heated and cooled 10-way power 40/20/40 split front seat, center under-seat lockable storage with 12V powerpoint, and folding armrest with cupholders and storage			S	S	S	S	Climate control – Dual-zone electronic automatic temperature control			O	O	O	O		O	Vehicle Safe by Console Vault¹,³
						Multicontour front bucket seats with Active Motion®	O	O	O	O	O	O	Climate control – Rapid-heat supplemental cab heater¹ (diesel engine; standard where required)			S					S	Visors – Adjustable driver with pocket and front-passenger with mirror
		P	S	S	S	Easy-entry/-exit driver's seat feature with memory	P	S	S	S	S	S	Cruise control with steering wheel-mounted controls								S	Visors – Adjustable driver and front-passenger with covered mirrors
S						Heavy-duty vinyl 60/40 split flip-up rear seat	O	O	O	O	O	O	Flooring – Floor liners¹			S	S				S	Visors – Adjustable driver and front-passenger with covered and illuminated vanity mirrors
O	S					Cloth 60/40 split flip-up rear seat	S	O					Flooring – Black vinyl/carpet delete								S	Window – Rear, fixed
		S				Premium vinyl 60/40 split flip-up rear seat (SuperCab)	O	S	S	S	S	S	Flooring – Carpet with front and rear carpeted floor mats¹								S	Window – Rear, fixed with defroster and privacy glass¹
		S	S	S	S	Leather-trimmed 60/40 split flip-up rear seat (Crew Cab)							Flooring – Premium vinyl with front and rear carpeted floor mats and floor liners			O	O	S	S	S	S	Window – Rear, power-sliding with defroster and privacy glass¹ (SuperCab/Crew Cab)
		S	S	S	S	Rear under-seat fold-flat storage, lockable and partitionable, with 12V powerpoint (Crew Cab)							S Illuminated door-sill scuff plates								S	Windows – Manual
		S				Rear under-seat storage with 12V powerpoint (SuperCab)	P	S	S	S	S	S	Locks – Power door and tailgate with autolock/unlock			P	S	S	S	S	S	Windows – Power with front one-touch-up/-down feature
		S	S	S	S	Fold-down rear-seat center armrest with dual integrated cupholders (Crew Cab)	P	S					Mirror – Day/night rearview									
		O	O	S	S	Heated rear outboard seats¹ (Crew Cab)	S		S	S	S	S	Mirror – Auto-dimming rearview									
							P	S					Power-adjustable pedals									
									P	S	S	S	Power-adjustable pedals with memory									



XL	XLT	LARIAT	KING RANCH®	PLATINUM	LIMITED		XL	XLT	LARIAT	KING RANCH	PLATINUM	LIMITED		XL	XLT	LARIAT	KING RANCH	PLATINUM	LIMITED				
						Exterior																	
0	0	0	0	0	0	Bed mat ¹																	
0	0	0	0	0	0	Bedliner – Drop-in ¹	0	0	0	0	0	0											
0	0	0	0	0	0	Bedliner – Tough Bed® spray-in bedliner with tailgate guard																	
0	S	S	S	S	S	BoxLink™ with 4 premium locking cleats	S																
S						Bumpers – Black-painted steel	0	S	S	S	S	S											
P	S	S	P			Bumpers – Chrome																	
			S			Bumpers – Stone Gray-painted steel	S																
			S	S		Bumpers – Body-color-painted steel	P	S															
0	%					Cab steps – Black platform running boards (standard on DRW; optional on SRW)					S												
0	0	0				Cab steps – 6" chrome angular step bars ¹ (SRW SuperCab and Crew Cab)						S											
0	0	S				Cab steps – 6" chrome angular step bars ¹ (DRW SuperCab/Crew Cab)	S	S	S	S													
	0	0	0			Cab steps – Extended-length 6" chrome angular step bars (SuperCab/Crew Cab)	0	0	0	0	0	0											
			S			Cab steps – Stone Gray angular step bars with lights	0	0	0														
	0	0	S	S		Cab steps – Power-deployable running boards ¹	0	0	0														
0	0	0	0	0	S	Camera – Rear CHMSL camera with LED CHMSL, and center stack screen display ¹	%	%	S	S	S	S											
0	0	0	0	0	0	Camera – Customer-placed trailer camera ¹	0	0	0	S	S	S											
0	0	0	0	0	0	Camera – Customer-placed trailer camera, and Individual Trailer Tire Pressure Monitoring System (TPMS) ¹	0	0	0	0	0	0											
0	0					Camera – Rear view camera and prep kit ¹ (requires pickup box delete)			0	S													
0	0	0	0	0	S	Camera – Ultimate Trailer Tow Camera System ¹ (includes rear view camera, trailer hook-up lamp, 360-degree camera with Split-View Display, rear CHMSL camera with LED CHMSL, and Trailer Reverse Guidance)	S																
	P	P	P	S	S	Chrome exhaust tip	P	S															
S	S					Door handles – Black		0	S	S	S	S											
		S	S			Door handles – Body-color																	
	P	P	P	S		Door handles – Chrome																	
			S			Door handles – Satin-aluminum																	
0	0	0	0	0	0	Exterior backup alarm by ECCO® ²																	
						Fog lamps – Halogen																	
						Fog lamps – LED ¹								S	S								
						Ford Telematics™ powered by Telogis® ² – Fleet-tracking system (includes 1 year of service)																	
						Glass – Solar-tint																	
						Glass – Privacy-tint on rear doors and rear window, solar-tint on windshield and front doors ¹																	
						Grille – Black																	
						Grille – Chrome 2-bar insert with Carbon Black surround																	
						Grille – Chrome 2-bar insert with chrome surround																	
						Grille – Chrome main bars with accent-color secondary bars																	
						Grille – Satin-aluminum main and secondary bars																	
						Grille – Satin-aluminum main bars with chrome secondary bars																	
						Headlamps – Quad-beam jewel-effect halogen																	
						Headlamps – Quad-beam LED with LED taillamps and fog lamps ¹																	
						Hood deflector, black molded																	
						Lighting – Amber LED warning strobes with CHMSL light bar and 2 hood-mounted lights by SoundOff Signal® ^{1,2}																	
						Lighting – Amber/white LED warning strobes with CHMSL light bar and 2 hood-mounted lights by SoundOff Signal ^{1,2}																	
						Lighting – Center high-mounted stop lamp (CHMSL) with cargo lamp (optional on pickup box delete)																	
						Lighting – LED box lighting with LED CHMSL ¹																	
						Lighting – LED roof marker/clearance lamps (SRW)																	
						Lower-accent two-tone paint (includes accent-color wheel-lip moldings on SRW)																	
						Mirrors – Manually telescoping trailer tow with 2-way fold and manual glass																	
						Mirrors – Manually telescoping trailer tow with 2-way fold, power/heated glass, heated manual spotter mirrors, and integrated clearance lamps and turn signal indicators																	
						Mirrors – PowerScope® power-telescoping/-folding trailer tow with power/heated glass, heated manual spotter mirrors, integrated clearance lamps, turn signal indicators, high-intensity LED security approach lamps, and Utility Lighting System (LED sideview mirror spotlights)																	
						Mirrors – Memory feature for sideview mirrors																	
						Mirrors – Black sideview mirror caps																	
						Mirrors – Body-color sideview mirror caps																	
						Mirrors – Chrome sideview mirror caps																	
						Moonroof – Power, twin-panel ¹ (Crew Cab)																	
						Remote Start System ¹																	
						SecuriCode™ keyless entry keypad																	
						Skid plates for transfer case and fuel tank (4x4)																	
						Splash guards – Front and rear ¹ (SRW)																	
						Stowable bed extender ¹ (SRW)																	
						Stowable loading ramps ¹																	
						Tailgate – Remote release with power remote lock																	
						Tailgate – Tailgate step with step, grab bar and tailgate lift assist																	
						Tailgate appliqué – Satin-aluminum																	
						Tailgate handle – Black																	
						Tailgate handle – Chrome																	
						Tailgate handle – Satin-aluminum																	
						Tow hooks – Black																	
						Tow hooks – Chrome																	
						Wheel-well liners – Front ¹ (SRW)																	
						Wheel-well liners – Front ¹ (DRW)																	
						Wheel-well liners – Rear (SRW)																	
						Wheel-well liners – Front and rear (SRW)																	
						Safety & Security																	
						Advanced Security Pack with inclination/intrusion sensors ¹																	
						Inflatable rear safety belts in outboard seating positions ¹ (Crew Cab)																	
						Intelligent Access with push-button start																	
						Perimeter alarm																	
						Remote Keyless Entry System with 2 integrated keyhead transmitter remotes																	

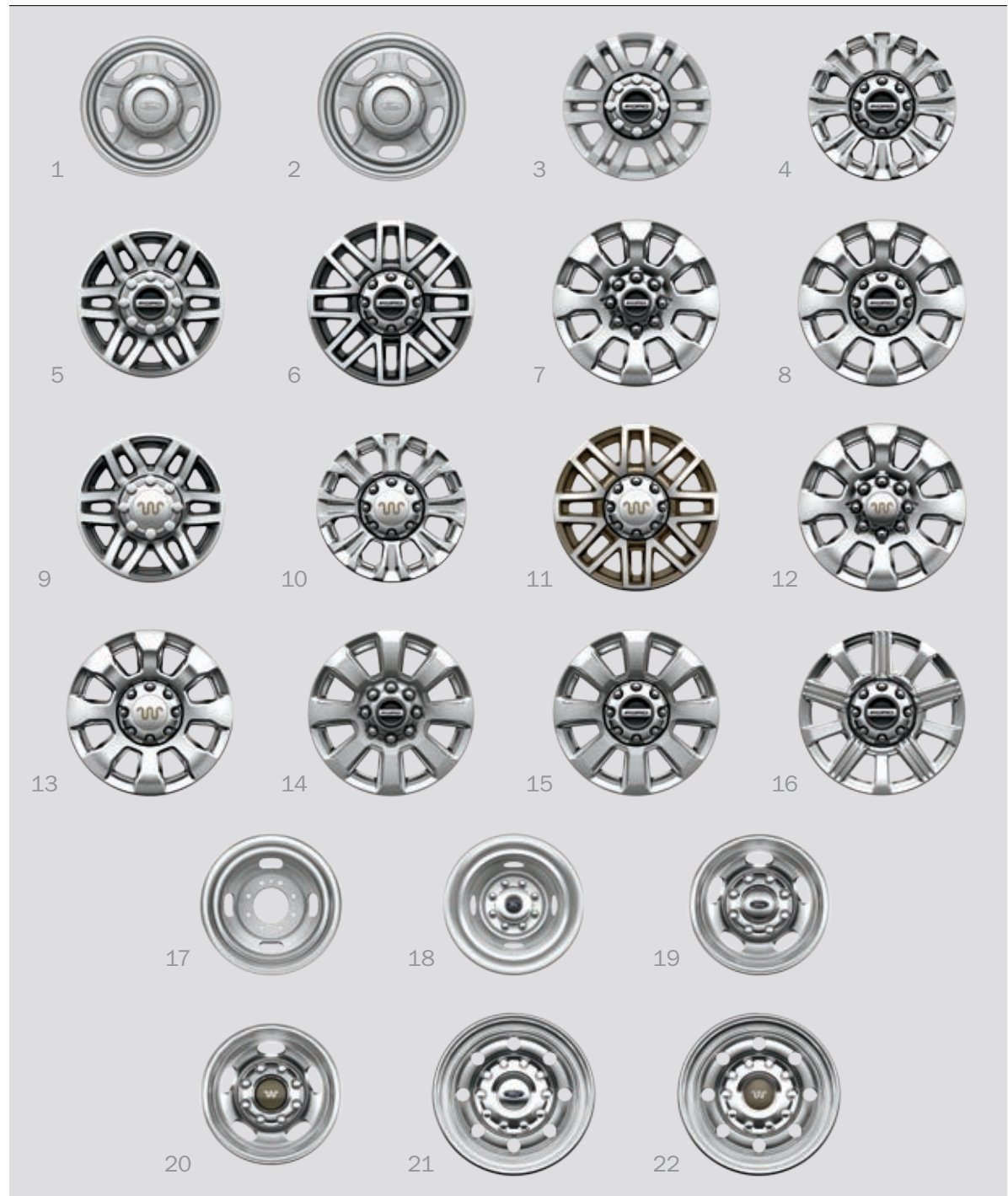


XL	XLT	LARIAT	KING RANCH®	PLATINUM	LIMITED		XL	XLT	LARIAT	KING RANCH	PLATINUM	LIMITED		XL	XLT	LARIAT	KING RANCH	PLATINUM	LIMITED		
0	S	S	S	S	S	Packages Power Equipment Group ¹ : accessory delay for power features; trailer tow mirrors with 2-way fold, power/heated glass, heated manual spotter mirrors, and integrated clearance lamps and turn signal indicators; perimeter alarm; power door and tailgate locks; power windows with front one-touch-up/-down feature; and Remote Keyless Entry System with 2 integrated keyhead transmitter remotes	0						LARIAT Value Package ¹ : easy-entry/-exit driver's seat with memory, LED box lighting, LED CHMSL with cargo lamp, power-adjustable pedals with memory, PowerScope® trailer tow mirrors with memory, and Remote Start System	0	0	0	0	0	0	0	9,900-lb. GVWR Package ¹ (F-250)
0						XL Value Package ¹ : 4.2" center stack screen, AM/FM stereo/single-CD player with MP3 capability, cruise control, bright center caps on wheels (SRW only), and chrome front and rear bumpers	0						LARIAT Ultimate Package ¹ (Crew Cab only): ambient lighting, auto high-beam headlamps, rain-sensing windshield wipers, easy entry/exit driver's seat with memory, LED box lighting, LED CHMSL with cargo lamp, power-adjustable pedals with memory, Intelligent Access with push-button start, heated steering wheel, power-tilt/-telescoping steering column with memory, PowerScope trailer tow mirrors with memory, Remote Start System, remote tailgate release, tailgate step, and voice-activated Navigation System with integrated SiriusXM® Traffic and Travel Link® with 5-year subscription ²	0	0	0	0	0	0	0	10,000-lb. GVWR Package ¹ (F-350 SRW)
0						STX Appearance Package ¹ : AM/FM stereo/single-CD player with MP3 capability, cruise control, chrome grille with Carbon Black surround, chrome front and rear bumpers, 18" cast-aluminum wheels with bright center caps and LT275/65R18E BSW all-season tires (SRW), 17" polished forged-aluminum wheels (F-350 DRW), and STX fender vent badges	0	0					Tow Technology Bundle : adaptive steering, auto high-beam headlamps, rain-sensing windshield wipers, lane-keeping alert, Driver Alert System, and Ultimate Trailer Tow Camera System	0	0	0	0	0	0	0	11,400-lb. GVWR Package ¹ (F-350 SRW)
0	0					Pickup box delete ¹ (F-250/F-350 with 8' box only): deletes pickup box, tailgate, rear bumper, 7-/4-pin connector, CHMSL with cargo lamp, jack, and spare wheel, tire, lock and carrier	0	0					Chrome Package ¹ : 6" chrome angular step bars, 18" chrome-like PVD wheels (SRW only), chrome door handles, chrome exhaust tip, chrome tow hooks, and chrome mirror caps; KING RANCH also includes chrome front and rear bumpers and chrome tailgate appliqué	0	0	0	0	0	0	0	13,000-lb. GVWR Package ¹ (F-350 DRW)
0	0					Heavy-Service Front Suspension Package for pickup box delete ¹ (SRW with pickup box delete): front springs upgrade (unless maximum springs have been computer-selected as included equipment), rear auxiliary springs (F-250), and rear stabilizer bar			0				KING RANCH Monochromatic Paint Package ¹ : monochromatic paint; deletes two-tone lower accent color and Stone Gray wheel-lip moldings; requires Chrome Package	0	0	0	0	0	0	0	5th-Wheel/Gooseneck Trailer Tow Prep Package ¹ (4x4 only; 4x2 available by dealer install, consult your dealer): 1 under-bed frame crossmember, 5 pickup bed 5th-wheel/gooseneck attachment points and close-out plugs, and an integrated 7-pin connector on the driver's side pickup bed wall
	0					XLT Value Package ¹ : autolock/unlock, fog lamps, power-adjustable pedals (SuperCab/Crew Cab only), 8-way power driver's seat (SuperCab/Crew Cab only), Reverse Sensing System, and SecuriCode keyless entry keypad			0				KING RANCH Ultimate Package : BLIS® (Blind Spot Information System) with trailer coverage and cross-traffic alert; LED headlamps, fog lamps, and taillamps; twin-panel moonroof; tailgate step; power-deployable running boards; and multicontour front bucket seats with Active Motion®	0	0	0	0	0	0	0	Camper Package ¹ : front springs upgrade (unless maximum springs have been computer-selected as included equipment), rear stabilizer bar (SRW), auxiliary rear springs (F-250), and slide-in camper certification
0						XLT Premium Package ¹ (SuperCab/Crew Cab): 4.2" LCD productivity screen in instrument cluster, SYNC® 3, 6" chrome angular step bars, 18" chrome-like PVD wheels (SRW only), autolock/unlock, chrome exhaust tip, chrome door and tailgate handles, chrome tow hooks, halogen fog lamps, power-adjustable pedals, 8-way power driver's seat with heat, 2-way manual passenger seat with heat, Reverse Sensing System, SecuriCode keyless entry keypad, and chrome mirror caps						0	PLATINUM Ultimate Package : adaptive cruise control and collision warning with brake support, lane-keeping alert, Driver Alert System, twin-panel moonroof, and Ultimate Trailer Tow Camera System	0	0	0	0	0	0	0	CNG/Propane Gaseous Engine Prep Package (F-250/F-350 gas engine only): hardened engine intake valves and valve seats and bi-fuel manifold
														0	0	0	0	0	0	0	F-250 High-Capacity Trailer Tow Package ¹ (F-250 with 8' box and diesel engine only): max. front springs, upgraded axles and 27,500-lb. GCWR
														0	0	0	0	0	0	0	FX4 Off-Road Package ¹ (4x4 only): Hill Descent Control™ off-road-tuned front and rear shocks, skid plates for transfer case and fuel tank, FX4 Off-Road box decals (box decals not included on PLATINUM)
														0	0	0	0	0	0	0	Heavy-Service Front Suspension Package ¹ : front springs upgrade (unless maximum springs have been computer-selected as included equipment)
														0	0	0	0	0	0	0	Snow Plow Prep Package ¹ (4x4 only): computer-selected springs for snow plow application, and extra-heavy-duty alternator
														0	0	0	0	0	0	0	Snow Plow/Camper Package ¹ (4x4 only): computer-selected front springs for snow plow application, extra-heavy-duty alternator, rear stabilizer bar (SRW), auxiliary rear springs (F-250), and slide-in camper certification



WHEELS / TIRES | S: Standard O: Optional P: Package Content

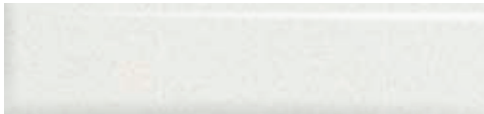
	XL	XL T	LARIAT	KING RANCH®	PLATINUM	LIMITED	
1	S						17" Argent-Painted Steel with Painted Center Cap (SRW)
2	O						18" Argent-Painted Steel with Painted Center Cap (F-350 SRW)
3	P	S					18" Cast-Aluminum with Bright Center Cap (SRW; included in STX Package)
4		P	P				18" Chrome-Like PVD with Bright Center Cap ¹ (SRW with Chrome Package)
5			S				18" Bright-Machined Cast-Aluminum with Bright Center Cap (SRW)
6			O				20" Premium Cast-Aluminum with Bright Center Cap (SRW 4x4)
7			O				20" Chrome-Like PVD with Bright Center Cap ¹ (SRW 4x4 with Chrome Package)
8			O				20" Chrome-Like PVD with Bright Center Cap ¹ (SRW 4x4 with diesel engine and Chrome Package)
9				S			18" Bright-Machined Cast-Aluminum with KING RANCH Center Cap (SRW 4x4)
10				P			18" Chrome-Like PVD with KING RANCH Center Cap (SRW with Chrome Package)
11				O			20" Premium Painted Cast-Aluminum with KING RANCH Center Cap (SRW 4x4)
12				O			20" Chrome-Like PVD with KING RANCH Center Cap ¹ (SRW 4x4 with Chrome Package)
13				O			20" Chrome-Like PVD with KING RANCH Center Cap ¹ (SRW 4x4 with diesel engine and Chrome Package)
14					S		20" Polished Aluminum with Bright Center Cap ¹ (SRW)
15					S		20" Polished Aluminum with Bright Center Cap ¹ (SRW with diesel engine)
16					S		20" Polished Aluminum with Bright Center Cap (SRW)
17	S	S					17" Argent-Painted Steel without Center Cap (F-350 DRW)
18	O	O					17" Stainless Steel Covers, Front and Rear ² (F-350 DRW)
19	O	O	S	S	S	S	17" Polished Forged-Aluminum with Bright Center Cap ² (F-350 DRW)
20				S			17" Polished Forged-Aluminum with KING RANCH Center Cap ² (F-350 DRW)
21	S	S	S	S	S	S	19.5" Polished Forged-Aluminum with Bright Center Cap ² (F-450)
22				S			19.5" Polished Forged-Aluminum with KING RANCH Center Cap ² (F-450)
		S					LT245/75R17E BSW All-Season (SRW)
		S	S	S	S	S	LT245/75R17E BSW All-Season (F-350 DRW)
		O					LT245/75R17E BSW All-Terrain ¹ (SRW)
		O	O	O	O	O	LT245/75R17E BSW All-Terrain (F-350 DRW)
			O	O	O	O	LT245/75R17E OWL All-Terrain (F-350 DRW; BSW rear inner tires)
		O					LT265/70R17E OWL All-Terrain (SRW)
		O	S	S	S	S	LT275/65R18E BSW All-Season ¹ (SRW)
		O	O	O	O	O	LT275/70R18E BSW All-Terrain ¹ (SRW 4x4)
			O	O	O	O	LT275/70R18E OWL All-Terrain (SRW 4x4)
				O	O	O	LT275/65R20E OWL All-Season (SRW 4x4)
				O	O	S	LT275/65R20E OWL All-Terrain (SRW 4x4)
	S	S	S	S	S	S	225/70R19.5G BSW All-Season (F-450)



EXTERIORS / INTERIORS

	Two-Tone	XL	XLT	LARIAT	KING RANCH®	PLATINUM	LIMITED
White Platinum Metallic Tri-coat ¹	■ ■			5 6	7	8 9	10
Oxford White	■ ■	1 2	3 4	5 6	7		
Ingot Silver ²	■	1 2	3 4	5 6		8 9	
White Gold ²	■		4	5 6	7	8 9	10
Stone Gray ^{2,3}			3 4	5 6	7		10
Magma Red ^{2,4}	■ ■		4	5 6	7		10
Race Red		1 2	3 4	5 6			
Ruby Red Metallic Tinted Clearcoat ¹	■ ■		3 4	5 6	7	8 9	10
Blue Jeans ²	■ ■	1 2	3 4	5 6	7		
Magnetic ²		1 2	3	6		8 9	
Shadow Black	■ ■	1 2	3 4	5 6	7	8 9	10

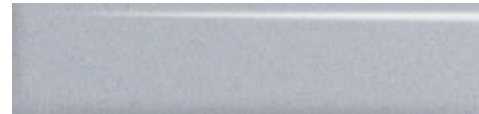
■ Stone Gray Two-Tone Accent exterior standard on KING RANCH; optional on LARIAT
 ■ Magnetic Two-Tone Accent exterior optional on LARIAT with Black Leather interior only



White Platinum Metallic Tri-coat



Oxford White



Ingot Silver



White Gold



Stone Gray



Magma Red



Race Red



Ruby Red Metallic Tinted Clearcoat



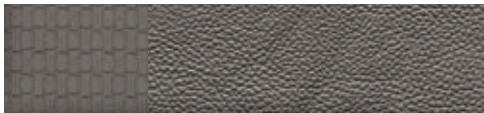
Blue Jeans



Magnetic

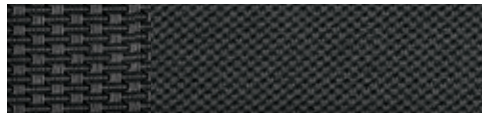


Shadow Black



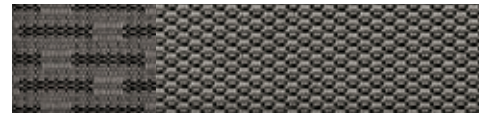
Medium Earth Gray Vinyl

1



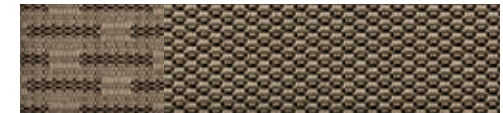
Dark Earth Gray Cloth

2



Medium Earth Gray Cloth

3



Medium Light Camel Cloth

4



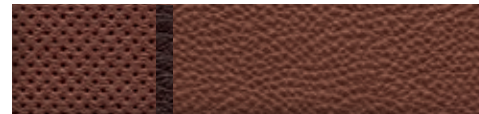
Medium Light Camel Leather

5



Black Leather

6



Kingsville Leather with Tuxedo Stripes

7



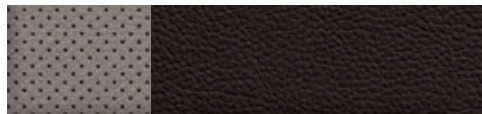
Black Luxury Leather with Tuxedo Stripes

8



Dark Marsala Luxury Leather with Tuxedo Stripes

9



Camelback Two-Tone Premium Luxury Leather

10



DIMENSIONS

Exterior	Regular Cab	SuperCab	Crew Cab		
	8' Box 4x2/4x4	6¾' Box 4x2/4x4	8' Box 4x2/4x4	6¾' Box 4x2/4x4	8' Box 4x2/4x4
Wheelbase	141.6"	148.0"	164.2"	159.8"	176.0"
Length	231.8"	238.2"	254.4"	250.0"	266.2"
Width					
SRW (excl. mirrors)	80.0"	80.0"	80.0"	80.0"	80.0"
DRW (excl. mirrors)	96.0"	—	96.0"	—	96.0"
With mirrors	105.9"	105.9"	105.9"	105.9"	105.9"
With mirrors extended	110.0"	110.0"	110.0"	110.0"	110.0"
Height					
F-250 SRW (w/o options)	77.9"/81.1"	78.4"/81.5"	78.1"/81.4"	78.3"/81.5"	78.0"/81.3"
F-350 SRW (w/o options)	77.8"/80.9"	78.2"/81.3"	78.0"/81.2"	78.2"/81.3"	78.0"/81.1"
F-350 DRW (w/o options)	78.1"/80.6"	—	77.8"/80.9"	—	77.9"/81.0"
F-450 DRW (w/o options)	—	—	—	—	81.3"/81.3"
Ground clearance					
F-250 SRW	8.5"/8.3"	8.5"/8.2"	8.5"/8.2"	8.5"/8.2"	8.5"/8.2"
F-350 SRW	8.5"/8.2"	8.5"/8.2"	8.5"/8.2"	8.5"/8.2"	8.5"/8.2"
F-350 DRW	7.8"/7.7"	—	7.8"/7.8"	—	7.8"/7.8"
F-450 DRW	—	—	—	—	8.6"/8.6"
Interior	Regular Cab	SuperCab	Crew Cab		
Front					
Head room	40.8"	40.8"	40.8"		
Leg room (max.)	43.9"	43.9"	43.9"		
Hip room	62.5"	62.5"	62.5"		
Shoulder room	66.7"	66.7"	66.7"		
Rear					
Head room	—	40.3"	40.4"		
Leg room	—	33.5"	43.6"		
Hip room	—	64.7"	64.7"		
Shoulder room	—	65.8"	65.9"		
Total passenger volume	64.6 cu. ft.	116.0 cu. ft.	131.8 cu. ft.		
Cargo volume behind 1st row	11.6 cu. ft.	31.6 cu. ft.	52.1 cu. ft.		
Cargo Box	8' Box	6¾' Box			
Volume (cu. ft.)	78.5	65.4			
Length at floor	98.1"	81.9"			
Width at wheelhouse	50.5"	50.5"			
Width at floor (max.)	66.9"	66.9"			
Cargo box height	21.1"	21.1"			

PAYLOAD

Maximum Payload Weight Ratings (lbs.)

	Max. GVWR	Regular Cab	SuperCab	Crew Cab		
		141.6" WB	148.0" WB	164.2" WB	159.8" WB	176.0" WB
F-250 SRW 4x2	9,900 10,000	4,150 4,250	3,870 3,970	3,760 3,860	3,770 3,870	3,540 3,640
F-250 SRW 4x4	9,900 10,000	3,730 3,830	3,460 3,560	3,370 3,470	3,370 3,470	3,120 3,220
F-350 SRW 4x2	9,900 10,000 10,100 10,300 10,400 10,500 10,600 10,800 10,900 11,000 11,100 11,200 11,300 11,400 11,500	3,960 4,060 — — 4,400 — 3,920 — — — 4,360 — — — —	3,710 3,810 — — — 4,250 — 3,890 — — 4,230 — — — —	3,590 3,690 — 3,990 — — — 4,440 — 3,960 — — — 4,300 4,400	3,550 3,650 3,750 — — 4,190 — 3,800 — — — 4,150 — — —	3,320 3,420 — — — 3,920 — 4,260 — — 3,760 — — 4,000 4,100
F-350 SRW 4x4	9,900 10,000 10,300 10,400 10,500 10,700 10,800 10,900 11,000 11,100 11,200 11,300 11,400 11,500	3,550 3,650 3,950 — — — 4,390 — 3,910 — 3,780 — 4,880 4,250 4,350	3,290 3,390 3,950 3,790 — — 4,130 — — 3,780 — 4,420 4,630 4,020 4,120	3,180 3,280 — — 3,980 — — — — — 4,420 3,850 4,620 4,720	3,140 3,240 — — 3,740 — — 4,080 — — — 3,690 4,470 3,840 3,940	2,900 3,000 — — — 3,800 — — — — 3,690 4,240 4,340 4,440
F-350 DRW 4x2	13,000 14,000	6,630 7,630	— —	6,180 7,180	— —	5,950 6,950
F-350 DRW 4x4	13,000 14,000	6,210 7,210	— —	5,760 6,760	— —	5,530 6,530
F-450 DRW 4x2	14,000	—	—	—	—	5,630
F-450 DRW 4x4	14,000	—	—	—	—	5,310

Best-in-class configuration shown in bold.



6 auxiliary upfitter switches¹ are mounted overhead, within easy reach of front-seat occupants.

Up to 6 power sources, including 12V powerpoints¹ and 110V power outlets,¹ help you recharge your equipment easily. And the combined max. output of these outlets is 400W in Park and 300W when driving.

	Engine	Axle Ratio	GCWR	Regular Cab Conventional Towing			SuperCab Conventional Towing			Crew Cab Conventional Towing		
				Weight Carrying	Weight Distribution	5th-Wheel/Gooseneck Towing	Weight Carrying	Weight Distribution	5th-Wheel/Gooseneck Towing	Weight Carrying	Weight Distribution	5th-Wheel/Gooseneck Towing
F-250 SRW 4x2	6.2L Gas	3.73	19,500	13,000	13,300	13,200	13,000	13,000	13,000	12,900	12,900	12,900
	4.30	4.30	22,000	13,000	14,000	15,700	14,000	15,000	15,500	14,000	15,000	15,400
F-250 SRW 4x4	6.2L Gas	3.73	19,500	12,900	12,900	12,800	12,600	12,600	12,600	12,500	12,500	12,500
	4.30	4.30	22,000	15,000	15,000	15,300	15,000	15,000	15,100	15,000	15,000	15,000
F-250 SRW 4x4	6.7L Diesel	3.31/3.55	24,100 24,700 25,700	— — 14,000 ¹	— — 15,000 ¹	— — 18,500 ¹	— — 15,000 ¹	— — 15,000 ¹	— 17,300 ¹ —	— — 18,000 ¹	— — 18,000 ¹	16,500 ¹ — —
	6.7L Diesel	3.31/3.55	22,500 22,700 24,400 25,200 25,700	— — — — 14,000 ¹	— — — — 15,000 ¹	— — 16,400 ¹ — —	— — — 15,000 ¹ 14,000 ¹	— — — 15,000 ¹ 15,000 ¹	— 14,700 ¹ — — —	— — — — 17,500 ¹	— — — — 17,500 ¹	14,700 ¹ — — — —
F-350 SRW 4x2	6.2L Gas	3.73	19,500	13,000	13,100	13,000	12,800	12,800	12,800	12,700	12,700	12,600
	4.30	4.30	23,000	13,000	14,000	16,500	13,000	14,000	16,300	15,000	15,000	16,100
F-350 SRW 4x4	6.2L Gas	3.73	19,500	12,600	12,600	12,600	12,400	12,400	12,400	12,300	12,300	12,200
	4.30	4.30	23,000	15,000	15,000	16,100	15,000	15,000	15,900	15,000	15,000	15,700
F-350 DRW 4x2	6.2L Gas	3.73	20,000	13,200	13,200	13,100	12,700	12,700	12,700	12,500	12,500	12,500
	4.30	4.30	23,500	16,700	16,700	16,600	16,200	16,200	16,200	16,000	16,000	16,000
F-350 DRW 4x4	6.7L Diesel	3.55	36,000	18,000	21,000	28,400 ³	18,000	21,000	28,000 ³	19,000	21,000	27,700 ³
	4.10	4.10	40,000	18,000	21,000	32,000 ³	18,000	21,000	32,000 ³	19,000	21,000	31,700 ³
F-450 DRW 4x2	6.2L Gas	3.73	20,000	12,700	12,700	12,700	12,300	12,300	12,300	12,100	12,100	12,000
	4.30	4.30	23,500	16,200	16,200	16,200	15,800	15,800	15,800	15,600	15,600	15,500
F-450 DRW 4x4	6.7L Diesel	3.55	36,000	18,000	20,000	27,900 ³	19,000	21,000	27,600 ³	21,000	21,000	27,300
	4.10	4.10	40,000	18,000	20,000	31,900 ³	19,000	21,000	31,600 ³	21,000	21,000	31,300 ³
F-450 DRW 4x2	6.7L Diesel	4.30	42,800	—	—	—	—	—	—	21,000	21,000	34,000³
F-450 DRW 4x4	6.7L Diesel	4.30	41,700	—	—	—	—	—	—	21,000	21,000	32,500 ³

Best-in-class configurations shown in bold.

2018 Super Duty® | ford.com

WB = wheelbase SWB = short wheelbase (6¾' cargo box) LWB = long wheelbase (8' cargo box) ¹Requires F-250 High-Capacity Trailer Tow Package. ²Gooseneck tow rating shown. 5th-wheel tow rating limited to 5th-wheel hitch rating of 18,000 lbs. ³Gooseneck tow rating shown. 5th-wheel tow rating limited to 5th-wheel hitch rating of 27,500 lbs.

Maximum capabilities shown are for properly equipped vehicles with required equipment and a 150-lb. driver. Weight of additional options, equipment, passengers and cargo must be deducted from this weight. For additional information, see your Ford Dealer. **Conventional/Gooseneck Towing Notes:** This information also applies to models with Pickup box delete option (66D). Trailer tongue load weight should be 10% of total loaded trailer weight. Make sure that the vehicle payload (reduced by option weight) will accommodate trailer tongue load weight and the weight of passengers and cargo added to the towing vehicle. The addition of trailer tongue load weight, and the weight of passengers and cargo, must not cause vehicle weights to exceed the rear GAWR (Gross Axle Weight Rating) or GVWR (Gross Vehicle Weight Rating). These ratings can be found on the vehicle's Safety Compliance Certification Label. **5th-Wheel Towing Notes:** This information also applies to models with pickup box delete option (66D). Trailer kingpin load weight should be 15% of total loaded trailer weight. Make sure that the vehicle payload (reduced by option weight) will accommodate trailer kingpin load weight and the weight of passengers and cargo added to the towing vehicle. The addition of trailer kingpin load weight, and the weight of passengers and cargo, must not cause vehicle weights to exceed the rear GAWR (Gross Axle Weight Rating) or GVWR (Gross Vehicle Weight Rating). These ratings can be found on the vehicle's Safety Compliance Certification Label.





FORD ACCESSORIES

XLT with XLT Value Package in Oxford White accessorized with 5" Black step bars, hood deflector, side window deflectors by EGR,² hard-folding tonneau cover by Advantage,² heavy-duty splash guards, chrome front tow hooks, LED fog lamps by Putco,² and rear wheel-well liners

accessories.ford.com

Exterior

- Exhaust tips
- Exterior trim kits¹
- Fender flares¹
- Fifth-wheel hitch kits (A)
- Fog lamps¹
- Hood/tailgate badge lettering¹
- Hood deflector
- Hood protector¹
- Racks and carriers^{1,2}
- Side window deflectors¹
- Splash guards
- Sportz[®] tents¹
- Stainless steel wheel covers¹
- Step bars
- Trailer towing accessories
- Wheel lock kits
- Wheel-well liners

Interior

- All-weather floor mats (for vinyl floors)
- Ash cup/coin holders
- Cargo organizers and protectors
- Door sill plates¹
- First aid and roadside assistance kits¹
- Floor liners (B)
- In-vehicle safe¹
- Interior light kit
- Protective seat covers¹
- Tablet cradle¹
- UVS100[®] Custom Sunscreen¹
- Electronics**
- Bullfrog[®] portable Bluetooth[®] speakers¹
- Ford Telematics[™]¹
- Keyless entry keypad
- Rear seat entertainment¹
- Remote start systems (D)

Strobe and work task lights¹

- Vehicle Security System
- Warning sensor systems¹
- Wireless charging¹

Bed Products

- Bed cleats and cargo nets
- Bed extenders, liners and mats
- Bed rails¹
- Bed standard interface plate
- Bed tailgate lock¹
- Bed tailgate viscous dampening cartridge
- Bedliner plug kits
- Commercial-grade tool/cargo box¹
- Pivot storage box¹
- Retractable stake pocket tie-downs¹
- Sportliners¹
- Stowable load ramps (C)
- Tonneau covers¹

New Vehicle Limited Warranty. We want your Ford F-Series Super Duty[®] ownership experience to be the best it can be. Under this warranty, your new vehicle comes with 3-year/36,000-mile bumper-to-bumper coverage, 5-year/60,000-mile Powertrain Warranty coverage, 5-year/60,000-mile safety restraint coverage, and 5-year/unlimited-mile corrosion (perforation) coverage on aluminum body panels – all with no deductible. The Ford 6.7L Power Stroke[®] diesel engine gets 5-year/100,000-mile warranty coverage. Please ask your Ford Dealer for a copy of this limited warranty.

Roadside Assistance. Covers your vehicle for 5 years or 60,000 miles, so you have the security of knowing that help may be only a phone call away should you run out of fuel, lock yourself out of the vehicle or need towing. Your Ford Dealer can provide complete details on all of these advantages.

Ford Credit. Get the ride you want. Whether you plan to lease or finance, you'll find the choices that are right for you at Ford Credit. Ask your Ford Dealer for details or check us out at fordcredit.com.

Ford Protect[™] Extended Service Plans. Whether you purchase or lease your Ford vehicle, insist on genuine Ford Protect extended service plans. Ford Protect has a variety of plans to give you peace-of-mind protection whether you want vehicle component or maintenance coverage. Plus, they are fully backed by Ford and honored at all Ford dealerships in the U.S., Canada and Mexico. When you visit your dealer, insist on genuine Ford Protect extended service plans.

Insurance Services. Get Ford Motor Company quality in your auto insurance. Our program offers industry-leading benefits and competitive rates. Call 1-877-367-3847, or visit us at fordvip.com for a no-obligation quote. Insurance offered by American Road Services Company (in CA, American Road Insurance Agency), a licensed agency and subsidiary of Ford Motor Company.

Ford Original Accessories. They're warranted for whichever provides you the greatest benefit: 24 months/unlimited mileage, or the remainder of your Bumper-to-Bumper 3-year/36,000-mile New Vehicle Limited Warranty. Ford Licensed Accessories (FLA) are warranted by the accessory manufacturer's warranty. FLA are designed and developed by the accessory manufacturer and have not been designed or tested to Ford Motor Company engineering requirements. Contact your Ford Dealer for details and/or a copy of all limited warranties.

Android, Android Auto, Google, Google Maps, Google Play, Waze and logos are trademarks of Google Inc. Apple, Apple CarPlay, Apple Music, iPhone and Siri are trademarks of Apple Inc., registered in the U.S. and other countries. Bullfrog is a registered trademark of Stillwater Designs. "HD Radio" and the HD Radio logo are proprietary trademarks of iBiquity Digital Corporation. King Ranch is a registered trademark of King Ranch, Inc. Miko is a registered trademark of Miko s.r.l. PANDORA, the PANDORA logo, and the Pandora trade dress are trademarks or registered trademarks of Pandora Media, Inc. Used with permission. Sirius, XM and all related marks and logos are trademarks of Sirius XM Radio Inc. Sony is a registered trademark of the Sony Corporation. Spotify is a registered trademark of Spotify AB, Sweden. The Bluetooth word mark is a trademark of the Bluetooth SIG, Inc.

Comparisons based on competitive models (class is Full-Size Pickups over 8,500 lbs. GVWR based on Ford segmentation), publicly available information and Ford certification data at time of printing. Vehicles may be shown with optional and aftermarket upfit equipment. Features may be offered only in combination with other options or subject to additional ordering requirements/limitations. Dimensions and capacity ratings shown may vary due to optional features and/or production variability. Information is provided on an "as is" basis and could include technical, typographical or other errors. Ford makes no warranties, representations, or guarantees of any kind, express or implied, including but not limited to, accuracy, currency, or completeness, the operation of the information, materials, content, availability, and products. Ford reserves the right to change product specifications, pricing and equipment at any time without incurring obligations. Your Ford Dealer is the best source of the most up-to-date information on Ford vehicles. Body manufacturers are responsible for compliance certification of the completed vehicle. The Ford New Vehicle Limited Warranty and any government certification made by Ford shall cover only the vehicle as manufactured by Ford and shall not extend to any addition, modification or change of or to the vehicle by the Ford Authorized Pool Account.

¹Ford Licensed Accessory. ²Consult your owner's manual for details on roof-rack load limits.