

# Corolla

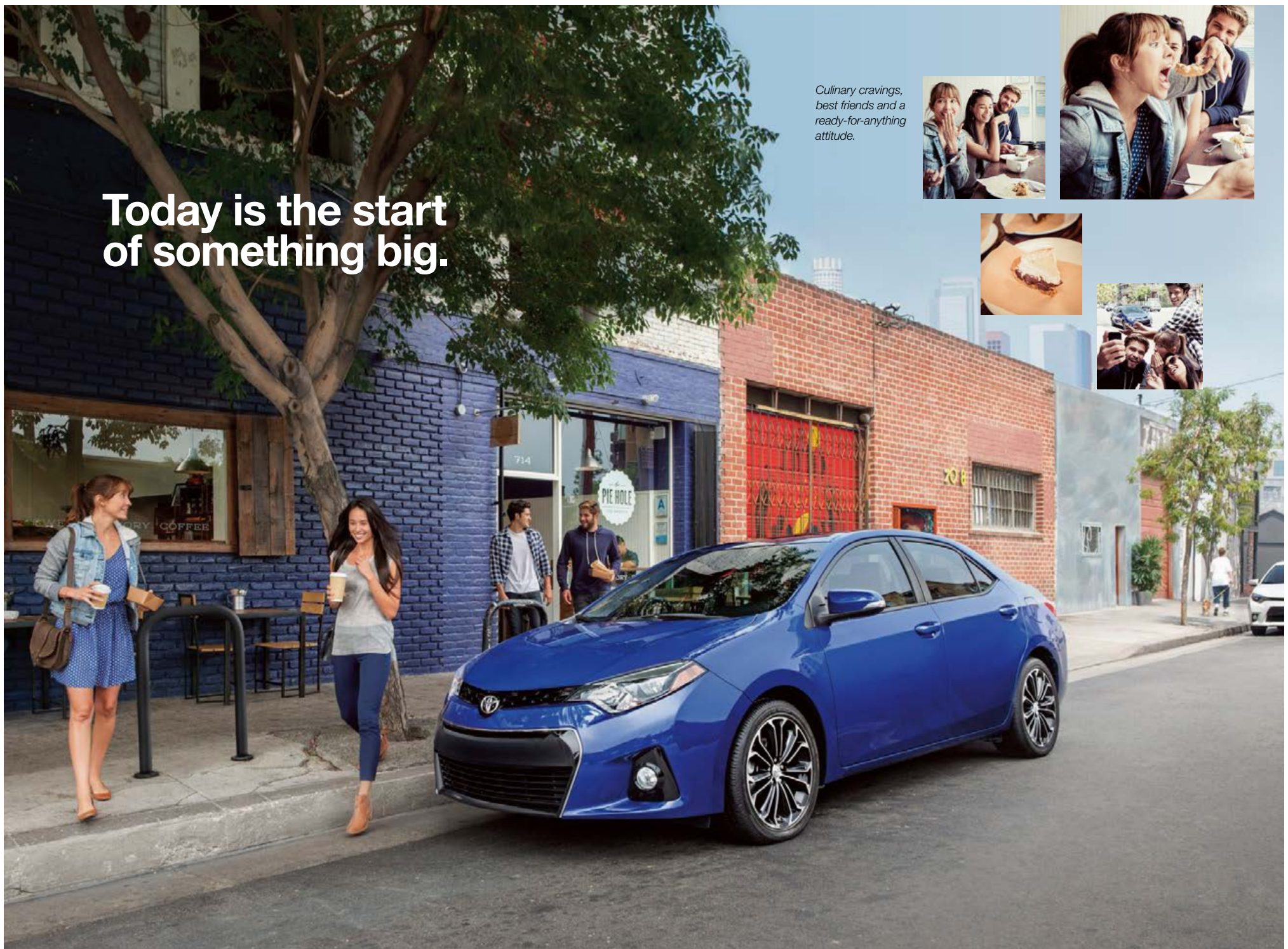
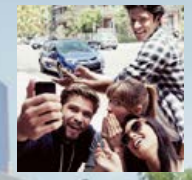
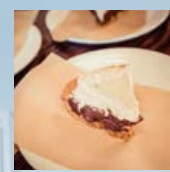
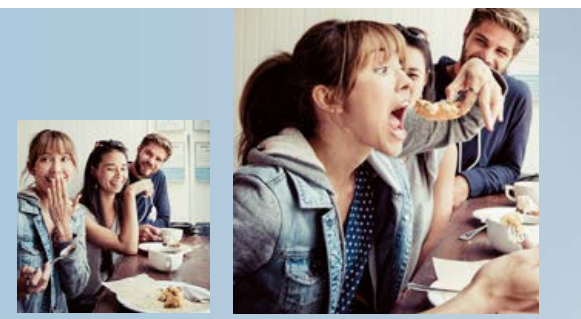
2015





Today is the start  
of something big.

*Culinary cravings,  
best friends and a  
ready-for-anything  
attitude.*

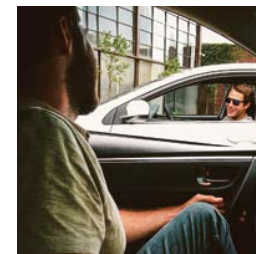


Left to right: **S Plus** shown in Blue Crush Metallic with available moonroof; **LE Eco Premium** shown in Blizzard Pearl!  
1. Extra-cost color.



# Let's make the unexpected happen.

Journeys aren't just about getting from point A to point B. They're opportunities for new experiences, preparing us for what's next in life. The 2015 Toyota Corolla is ready to help get you to your next stage, and in plenty of style. Its chiseled curves, standard LED headlights, and available 17-in. alloy wheels and rear spoiler show you've elevated your game. And with high-quality materials and lots of space in Corolla, friends and gear can comfortably come along for the ride. Plenty of available tech enables you to stay connected to your music, maps and apps too. So let's get to that next level. Let's go places.



*What will everyone say  
about your Corolla?  
Look at that grille, that  
stance and that attitude.*



**S Plus** shown in Blue Crush Metallic with available moonroof.

# Surprising style. Advanced tech. It's time to make your move.

Let's turn it up – Corolla is ready. For those with a sporty soul, there's Corolla S, with an aggressive front grille, rear spoiler and sport seats. LE Eco, with an EPA-estimated 42 highway mpg,<sup>1</sup> is all about getting higher mileage out of your tank, and it has fuel-friendly features, like available ECO Mode and 16-in. aerodynamically designed alloy wheels, to help maximize the fun in every journey. The 2015 Corolla was built to inspire, whether you're just admiring it in your driveway or pursuing the perfect slice of pie. Just slide into the stylish interior: Corolla is ready to go.



*Let's get the band back together for one last show. We've got big plans and the perfect car to help get us there.*

<sup>1</sup>. See footnote 14 in Disclosures section.





Left to right: **S Plus** shown in Blue Crush Metallic with available moonroof; **LE Eco Premium** shown in Blizzard Pearl!  
1. Extra-cost color.

# A space that feels like it was custom-made for your lifestyle.

The future is all about flexibility. That's why the interior of the 2015 Corolla has been designed to accommodate a lifestyle. One minute you're hauling your friends, the next minute, enough gear to outfit your band. Got big plans and bigger cargo? Rear seats easily fold down to fit fewer friends and more stuff. Maybe you just want to count stars: Simply slide open the available moonroof. Corolla is designed to be the perfect partner no matter what you, or your friends, decide to do.



## AVAILABLE AUTOMATIC CLIMATE CONTROL

No need to worry about the weather. Just select an exact temperature level using the digital control, and the automatic climate control will take care of everything else. It's the perfect partner to available heated front seats.

## 60/40

The 60/40 split rear seats on Corolla make it easy to transform the space to fit more cargo. Fold one seat down to get a little extra space; fold both, and you have a do-it-yourself flat-screen TV delivery space.



## AVAILABLE SOFTEX®

Elegance with the environment in mind. Available on LE Premium, LE Eco Premium and S Premium, SofTex® seats blend science and luxury: leather-like, water- and stain-resistant, and supportive on those long road trips.







LE Premium interior shown in Black SofTex.®



# We'll make this quick. This car is ready for life in the fast lane.

Hold on a minute—that's a Corolla? That's what people will say when they first see its sport gauge cluster and gated shifter. Every feature adds to Corolla's sport-inspired stylishness. With sleek available paddle shifters and a Sport Mode that delivers real hands-on performance and more fun behind the wheel, Corolla feels fast and looks cool. And sometimes on a late-night food run, that's all that matters.



## SPORT GAUGE CLUSTER

Everything you need is right in front of you. The customizable Multi-Information Display with 3.5-in. screen lets you monitor important information, like current/average fuel economy and estimated cruise range.



## GATED SHIFTER

If you are a purist, you'll be glad to know that Corolla S comes with a gated shifter, which lets you shift gears through slots rather than just up and down in a straight motion. It's all about the driver.



## AVAILABLE SPORT MODE

A push of a button is all you need to get every drop of excitement out of Corolla S with CVT transmission. Once Sport Mode is enabled, the Engine Control Unit and simulated shift points are changed to enable a sportier feel.





S Plus interior shown in Steel Blue mixed media with available moonroof and Driver Convenience Package.



# High tech meets high style. It's a match made in tech heaven.

Corolla will fit seamlessly into your network. Your car, phone and music have just become one. Standard features like *Bluetooth*<sup>®1</sup> connectivity, steering wheel-mounted audio and phone controls, and available cruise control attest to its technophile soul, while available Entune™ Premium Audio with Navigation<sup>2</sup> and App Suite<sup>3</sup> brings a whole new level of options to your fingertips: You can plug in an address, get directions, make restaurant reservations and even buy movie tickets. Go ahead: Call your friends. They'll want to hear about this.



## ENTUNE™ PREMIUM AUDIO WITH NAVIGATION AND APP SUITE

This available technology helps you stay connected to your social network, locate fun spots in the city, listen to your favorite music and even make dinner reservations. Its ergonomic design and easy-to-read display help keep everything you need within reach.



## BACKUP CAMERA<sup>4</sup>

Corolla's available integrated backup camera helps guide you into, or out of, the tight spots. When you shift into Reverse, the 6.1-in. touch-screen on the dash displays an image of what the camera sees behind you.



## USB<sup>5</sup>

Playlist-friendly. Plug your iPod<sup>®6</sup> or MP3 device in and get instant access to your music library through the USB port, or stream music<sup>7</sup> through *Bluetooth*<sup>®</sup> wirelessly. When it comes to being connected, you've got options.

1. See footnote 4 in Disclosures section. 2. See footnote 9 in Disclosures section. 3. See footnote 10 in Disclosures section. 4. See footnote 7 in Disclosures section. 5. See footnote 1 in Disclosures section. 6. See footnote 2 in Disclosures section. 7. See footnote 3 in Disclosures section.





**PADDLE SHIFTERS**

Bring on the twisty mountain roads. Paddle shifters, available on Corolla S CVT, give you more control over engine power for a spirited driving experience.

S Plus CVT interior shown in Steel Blue mixed media with moonroof and available Driver Convenience Package.

# Desire can't be measured in a wind tunnel, but efficiency can.

Beauty is more than skin deep, especially when it comes to aerodynamics. Corolla's sleek taillights, refined bumpers and flat floor design all add up to an impressive efficiency rating. Enhanced handling, an available shiftless transmission called CVTi-S, and Valvematic technology,<sup>1</sup> a valvetrain mechanism that optimizes intake valve lift, all come together to help earn a gas-station-avoiding EPA-estimated 42 highway mpg.<sup>2</sup>



## LE ECO MPG

An advanced ride deserves an advanced powertrain. LE Eco's 140-hp aluminum 1.8-liter engine with Valvematic technology can provide up to an EPA-estimated 42 highway mpg.<sup>2</sup> With eight more horsepower than other Corolla models, it offers added fun too.



## ECO DRIVING MODE

Selecting this mode on Corolla LE Eco Plus and Premium eases the output of the gas pedal and also regulates the air conditioning for better fuel efficiency. Just like that, you've got a little extra for a gourmet treat.





**LE Eco Premium** shown in Blizzard Pearl.<sup>1</sup>  
1. Extra-cost color.

# Safety never goes out of style. So we made it standard.

We believe every journey should be a safe one. That's why every new Corolla comes standard with the Star Safety System,<sup>™</sup> our advanced integration of safety technologies that includes Enhanced Vehicle Stability Control (VSC),<sup>1</sup> Traction Control (TRAC), Anti-lock Brake System (ABS), Electronic Brake-force Distribution (EBD), Brake Assist (BA)<sup>2</sup> and Smart Stop Technology<sup>®</sup> (SST).<sup>3</sup>

In addition to these confidence-inspiring safety features, Corolla has LATCH to help keep children secure and safe, Whiplash-Injury-Lessening Seats (WIL),<sup>4</sup> and a Tire Pressure Monitor System (TPMS).<sup>5</sup>



A driver and front passenger Advanced Airbag System, driver and front passenger seat-mounted side airbags, front and rear side curtain airbags, and driver knee and front passenger seat-cushion airbags come standard on Corolla. It's all part of a system designed to help keep you safe.



## LATCH

LATCH (Lower Anchors and Tethers for Children) provides an added measure of safety for the smaller members of your family. LATCH includes lower anchors on the outboard rear seats and tether anchors on all rear seats.



## WHIPLASH-INJURY-LESSENING SEATS

In addition to several safety features, Corolla comes with Whiplash-Injury-Lessening front seats that can help reduce the severity of whiplash injury in certain rear-end collisions.



## TIRE PRESSURE MONITOR SYSTEM

One of the best ways to help efficiency and performance is to make sure tires are properly inflated. TPMS is designed to alert the driver if one or more of the tires are critically low.

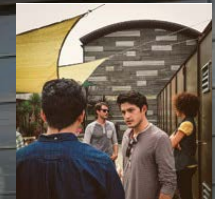
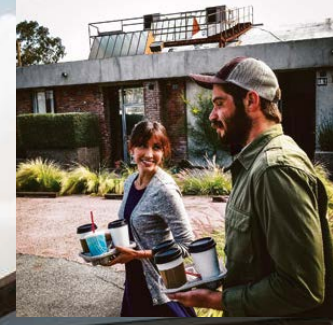
1. See footnote 17 in Disclosures section. 2. See footnote 18 in Disclosures section. 3. See footnote 19 in Disclosures section. 4. See footnote 21 in Disclosures section. 5. See footnote 16 in Disclosures section. 6. See footnote 20 in Disclosures section.





LE shown in Barcelona Red Metallic.

# Elevate your drive to a whole new level.



*Good friends, great coffee,  
and a hunger for an out of  
the ordinary, food-focused,  
adventure-filled day.*



**Left to right: S Plus** shown in Blue Crush Metallic with available moonroof, Driver Convenience Package and rear bumper protector;  
**LE Premium** shown in Brown Sugar Metallic; **L** shown in Classic Silver Metallic; **LE Eco Premium** shown in Blizzard Pearl!  
1. Extra-cost color.



## Color



Black Sand Pearl



Slate Metallic



Blue Crush Metallic



4Evergreen Mica



Barcelona Red Metallic



Brown Sugar Metallic



Classic Silver Metallic



Blizzard Pearl<sup>1</sup>



Super White

## Trim



L fabric shown in Steel Gray



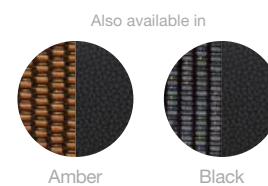
LE and LE Eco fabric shown in Ash



LE Premium and LE Eco Premium SofTex<sup>®</sup> shown in Black



S fabric shown in Steel Blue mixed media



## Wheels



15-in. L or LE Eco base wheel



16-in. LE base wheel



16-in. S base wheel



16-in. LE Plus and Premium wheel



16-in. LE Eco Plus and Premium wheel



17-in. S Plus and Premium wheel

\*Not all colors and trims available on all model grades. See dealer for details. 1. Extra-cost color.

## Corolla Models

### L



1.8L 4-Cyl. Engine  
6-speed manual or available 4-speed automatic transmission  
LED low-beam headlights with halogen high beams  
LED Daytime Running Lights (DRL)  
Power outside mirrors  
15-in. steel wheels  
Tech Audio – includes AM/FM CD player, four speakers, auxiliary audio jack, USB 2.0 port<sup>1</sup> with iPod<sup>®2</sup> connectivity, iPod<sup>®2</sup> interface, and hands-free phone capability, phone book access and music streaming<sup>3</sup> via *Bluetooth*<sup>®4</sup> wireless technology  
Fabric-trimmed seats  
6-way adjustable driver's seat  
4-way adjustable front passenger seat  
60/40 split fold-down rear seat  
Tilt/telescopic steering wheel with audio and *Bluetooth*<sup>®4</sup> hands-free phone controls  
Power door locks with automatic locking feature  
Power windows with driver-side one-touch up/down  
Center console with storage compartment  
12V auxiliary power outlet  
Two front and two rear cup holders

### LE

Adds to or replaces features offered on L



1.8L 4-Cyl. Engine  
Continuously Variable Transmission (CVT)  
16-in. steel wheels  
Heated power outside mirrors  
Entune™ Audio – includes the Entune™ Multimedia Bundle<sup>5</sup> with 6.1-in. touch-screen display, AM/FM CD player, six speakers, auxiliary audio jack, USB 2.0 port<sup>1</sup> with iPod<sup>®2</sup> connectivity and control, advanced voice recognition<sup>6</sup> and hands-free phone capability, phone book access and music streaming<sup>3</sup> via *Bluetooth*<sup>®4</sup> wireless technology  
Integrated backup camera<sup>7</sup>  
Automatic climate control  
Piano-black center stack  
Cruise control  
Remote keyless entry system  
Rear-seat center armrest with two cup holders

### LE Plus

Adds to or replaces features offered on LE

16-in. alloy wheels  
Integrated fog lights

### LE Premium

Adds to or replaces features offered on LE Plus

SofTex<sup>®</sup>-trimmed heated front seats  
8-way power-adjustable driver's seat  
4-way adjustable front passenger seat with seatback pocket  
Smart Key System<sup>®8</sup> with Push Button Start  
Power tilt/slide moonroof with sliding sunshade  
Entune™ Premium Audio with Navigation<sup>®9</sup> and App Suite<sup>10</sup> – includes the Entune™ Multimedia Bundle<sup>5</sup> with 6.1-in. high-resolution touch-screen with split-screen display, AM/FM CD player, six speakers, auxiliary audio jack, USB 2.0 port<sup>1</sup> with iPod<sup>®2</sup> connectivity and control, advanced voice recognition<sup>6</sup>, hands-free phone capability, phone book access and music streaming<sup>3</sup> via *Bluetooth*<sup>®4</sup> wireless technology, HD Radio,<sup>TM11</sup> HD predictive traffic and Doppler weather overlay, AM/FM cache radio, SiriusXM All Access Radio<sup>12</sup> with 3-month complimentary trial, and Gracenote<sup>®</sup> album cover art

### LE Eco

Adds to or replaces features offered on LE



1.8L 4-Cyl. Engine with Valvematic technology  
Continuously Variable Transmission (CVT)  
15-in. steel wheels  
Rear spoiler

### LE Eco Plus

Adds to or replaces features offered on Eco

16-in. alloy wheels  
Integrated fog lights  
ECO Drive Mode

### LE Eco Premium

Adds to or replaces features offered on Eco Plus

SofTex<sup>®</sup>-trimmed heated front seats  
8-way power-adjustable driver's seat  
4-way adjustable front passenger seat with seatback pocket  
Smart Key System<sup>®8</sup> with Push Button Start  
Power tilt/slide moonroof with sliding sunshade  
Entune™ Premium Audio with Navigation<sup>®9</sup> and App Suite<sup>10</sup> – includes the Entune™ Multimedia Bundle<sup>5</sup> with 6.1-in. high-resolution touch-screen with split-screen display, AM/FM CD player, six speakers, auxiliary audio jack, USB 2.0 port<sup>1</sup> with iPod<sup>®2</sup> connectivity and control, advanced voice recognition<sup>6</sup>, hands-free phone capability, phone book access and music streaming<sup>3</sup> via *Bluetooth*<sup>®4</sup> wireless technology, HD Radio,<sup>TM11</sup> HD predictive traffic and Doppler weather overlay, AM/FM cache radio, SiriusXM All Access Radio<sup>12</sup> with 3-month complimentary trial, and Gracenote<sup>®</sup> album cover art

### S

Adds to or replaces features offered on LE



1.8L 4-Cyl. Engine  
Continuously Variable Transmission (CVT)  
16-in. steel wheels with unique wheel covers  
Rear spoiler  
Integrated fog lights  
Heated power outside mirrors with turn signal indicators  
Mixed media seats with sport bolsters and sport fabric inserts  
Sport Drive Mode  
Sport instrumentation  
Leather-trimmed tilt/telescopic 3-spoke steering wheel with audio, Multi-Information Display and *Bluetooth*<sup>®4</sup> hands-free phone voice-command controls  
Paddle shifters

### S Plus

Adds to or replaces features offered on S

17-in. alloy wheels  
Rear disc brakes

### S Premium

Adds to or replaces features offered on S Plus

SofTex<sup>®</sup>-trimmed heated front seats  
8-way power-adjustable driver's seat  
4-way adjustable front passenger seat with seatback pocket

### S Plus (6MT)

Adds to features offered on S Plus

6-speed manual transmission  
Smart Key System<sup>®8</sup> with Push Button Start  
Power tilt/slide moonroof with sliding sunshade  
Entune™ Premium Audio with Navigation<sup>®9</sup> and App Suite<sup>10</sup> – includes the Entune™ Multimedia Bundle<sup>5</sup> with 6.1-in. high-resolution touch-screen with split-screen display, AM/FM CD player, six speakers, auxiliary audio jack, USB 2.0 port<sup>1</sup> with iPod<sup>®2</sup> connectivity and control, advanced voice recognition<sup>6</sup>, hands-free phone capability, phone book access and music streaming<sup>3</sup> via *Bluetooth*<sup>®4</sup> wireless technology, HD Radio,<sup>TM11</sup> HD predictive traffic and Doppler weather overlay, AM/FM cache radio, SiriusXM All Access Radio<sup>12</sup> with 3-month complimentary trial, and Gracenote<sup>®</sup> album cover art

See numbered footnotes in Disclosures section.



## Specifications

MECHANICAL/PERFORMANCE	L		CVT	LE		CVT	LE ECO		6MT	S		
	6MT	4AT		CVT PLUS	CVT PREMIUM		CVT PLUS	CVT PREMIUM		CVT	CVT PLUS	CVT PREMIUM
<b>ENGINE</b>												
1.8-Liter 4-Cylinder DOHC 16-Valve with Dual Variable Valve Timing with intelligence (VVT-i); 132 hp @ 6000 rpm, 128 lb.-ft. @ 4400 rpm	S	S	S	S	S	—	—	—	S	S	S	S
1.8-Liter 4-Cylinder DOHC 16-Valve with Valvematic technology; 140 hp @ 6100 rpm, 126 lb.-ft. @ 4000 rpm	—	—	—	—	—	S	S	S	—	—	—	—
Normal and Sport driving modes	—	—	—	—	—	—	—	—	—	S	S	S
Normal and ECO driving modes	—	—	—	—	—	—	S	S	—	—	—	—
<b>EMISSION RATING</b>												
Ultra Low Emission Vehicle II (ULEV-II)	S	S	S	S	S	—	—	—	S	S	S	S
California LEV 3	—	—	—	—	—	S	S	S	—	—	—	—
<b>TRANSMISSION</b>												
6-speed manual transmission	S	—	—	—	—	—	—	—	S	—	—	—
4-speed Electronically Controlled automatic Transmission with intelligence (ECT-i)	—	S	—	—	—	—	—	—	—	—	—	—
Continuously Variable Transmission with intelligence and Shift Mode (CVTi-S)	—	—	S	S	S	S	S	S	—	S	S	S
<b>DRIVETRAIN</b>												
Front-Wheel Drive (FWD)	S	S	S	S	S	S	S	S	S	S	S	S
<b>BODY CONSTRUCTION</b>												
Unitized body	S	S	S	S	S	S	S	S	S	S	S	S
<b>SUSPENSION</b>												
Independent MacPherson strut front suspension with stabilizer bar; torsion beam rear suspension with rear stabilizer bar	S	S	S	S	S	S	S	S	S	S	S	S
<b>STEERING</b>												
Electric Power Steering (EPS); power-assisted rack-and-pinion	S	S	S	S	S	S	S	S	S	S	S	S
Turning circle diameter, curb to curb (ft.)	35.6	35.6	35.6	35.6	35.6	35.6	35.6	35.6	35.6	35.6	35.6	35.6
<b>BRAKES</b>												
Power-assisted ventilated 10.8-in. front disc brakes; 9-in. rear drum brakes and Star Safety System™	S	S	S	S	S	S	S	S	—	S	—	—
Power-assisted ventilated 10.8-in. front disc brakes; solid 10.2-in. rear disc brakes and Star Safety System™	—	—	—	—	—	—	—	—	S	—	S	S
<b>DIMENSIONS</b>												
<b>EXTERIOR DIMENSIONS (in.)</b>												
Overall height	57.3	57.3	57.3	57.3	57.3	57.3	57.3	57.3	57.3	57.3	57.3	57.3
Overall width	69.9	69.9	69.9	69.9	69.9	69.9	69.9	69.9	69.9	69.9	69.9	69.9
Overall length	182.6	182.6	182.6	182.6	182.6	182.6	182.6	182.6	183.1	183.1	183.1	183.1
Wheelbase	106.3	106.3	106.3	106.3	106.3	106.3	106.3	106.3	106.3	106.3	106.3	106.3
Track, front/rear	60.3/60.4	60.3/60.4	59.8/59.9	59.8/59.9	59.8/59.9	60.3/60.4	59.8/59.9	59.8/59.9	59.8/59.9	59.8/59.9	59.8/59.9	59.8/59.9
Ground clearance	5.5	5.5	5.5	5.5	5.5	5.5	5.5	5.5	5.6	5.5	5.6	5.6
<b>INTERIOR DIMENSIONS, front/rear (in.)</b>												
Head room without moonroof	38.3/37.1	38.3/37.1	38.3/37.1	38.3/37.1	—	38.3/37.1	38.3/37.1	—	—	38.3/37.1	38.3/37.1	—
Head room with moonroof	—	—	—	38.0/37.1	38.0/37.1	—	38.0/37.1	38.0/37.1	38.0/37.1	—	38.0/37.1	38.0/37.1
Shoulder room	54.8/54.8	54.8/54.8	54.8/54.8	54.8/54.8	54.8/54.8	54.8/54.8	54.8/54.8	54.8/54.8	54.8/54.8	54.8/54.8	54.8/54.8	54.8/54.8
Hip room	53.0/43.9	53.0/43.9	53.0/43.9	53.0/43.9	53.0/43.9	53.0/43.9	53.0/43.9	53.0/43.9	53.0/43.9	53.0/43.9	53.0/43.9	53.0/43.9
Leg room	42.3/41.4	42.3/41.4	42.3/41.4	42.3/41.4	42.3/41.4	42.3/41.4	42.3/41.4	42.3/41.4	42.3/41.4	42.3/41.4	42.3/41.4	42.3/41.4
Seating capacity	5	5	5	5	5	5	5	5	5	5	5	5

S = Standard O = Optional -- = Not available P = Available as part of a package

Specifications (continued)

MECHANICAL/PERFORMANCE	L		CVT	LE		CVT	LE ECO		6MT	S			
	6MT	4AT		CVT PLUS	CVT PREMIUM		CVT PLUS	CVT PREMIUM		CVT	CVT PLUS	CVT PREMIUM	
<b>WEIGHTS/CAPACITIES</b>													
Curb weight (lb.)	2800	2820	2855	2855	2855	2855	2875	2875	2845	2865	2865	2865	
EPA passenger volume/with moonroof (cu. ft.)	97.5	97.5	97.5	97.5/97.1	97.5/97.1	97.5	97.5/97.1	97.5/97.1	97.1	97.5	97.5/97.1	97.5/97.1	
Cargo volume (cu. ft.) <sup>13</sup>	13.0	13.0	13.0	13.0	13.0	13.0	13.0	13.0	13.0	13.0	13.0	13.0	
Fuel tank (gal.)	13.2	13.2	13.2	13.2	13.2	13.2	13.2	13.2	13.2	13.2	13.2	13.2	
Coefficient of drag (Cd)	0.29	0.29	0.3	0.3	0.3	0.28	0.3	0.3	0.3	0.29	0.3	0.3	
<b>TIRES</b>													
Type All-Season	S	S	S	S	S	S	S	S	S	S	S	S	
Spare Temporary	S	S	S	S	S	S	S	S	S	S	S	S	
<b>MPG/OTHER/PRICE</b>													
Mileage estimates (mpg city/highway/combined) <sup>14</sup>	28/37/31	27/36/31	29/38/32	29/38/32	29/38/32	30/42/35	30/40/34	30/40/34	28/37/31	29/37/32	29/37/32	29/37/32	
<b>Features</b>													
<b>EXTERIOR</b>													
LED low-beam headlights with halogen high beams	S	S	S	S	S	S	S	S	S	S	S	S	
LED Daytime Running Lights (DRL)	S	S	S	S	S	S	S	S	S	S	S	S	
Integrated fog lights	—	—	—	S	S	—	S	S	S	S	S	S	
Front grille with argent-gray painted insert	—	—	S	S	S	S	S	S	—	—	—	—	
Front chrome grille surround with piano-black insert	—	—	—	—	—	—	—	—	S	S	S	S	
Chrome-accented window trim	—	—	—	—	—	—	S	S	—	—	—	—	
Color-keyed power outside mirrors	S	S	—	—	—	—	—	—	—	—	—	—	
Color-keyed heated power outside mirrors	—	—	S	S	S	S	S	S	—	—	—	—	
Color-keyed heated power outside mirrors with turn signal indicators	—	—	—	—	—	—	—	—	S	S	S	S	
Color-keyed outside door handles	S	S	S	S	S	S	S	S	S	S	S	S	
Power tilt/slide moonroof with sliding sunshade	—	—	—	O	S	—	O	S	S	—	O	S	
Rear spoiler	—	—	—	—	—	S	S	S	S	S	S	S	
15-in. steel wheels with wheel covers and P195/65R15 tires	S	S	—	—	—	S	—	—	—	—	—	—	
16-in. steel wheels with wheel covers and P205/55R16 tires	—	—	S	—	—	—	—	—	—	—	—	—	
16-in. alloy wheels with P205/55R16 tires	—	—	—	S	S	—	—	—	—	—	—	—	
16-in. steel wheels with unique wheel covers and P205/55R16 tires	—	—	—	—	—	—	—	—	—	S	—	—	
17-in. alloy wheels with P215/45R17 tires	—	—	—	—	—	—	—	—	S	—	S	S	
16-in. aerodynamically designed alloy wheels with P205/55R16 tires	—	—	—	—	—	—	S	S	—	—	—	—	
Intermittent windshield wipers	S	S	—	—	—	—	—	—	—	—	—	—	
Variable intermittent windshield wipers	—	—	S	S	S	S	S	S	S	S	S	S	
Chrome-tipped exhaust	—	—	—	—	—	—	—	—	S	S	S	S	
In-glass AM/FM antenna	S	S	S	S	S	S	S	S	S	S	S	S	
Roof-mounted antenna	—	—	—	P	P	—	P	P	S	—	P	P	
<b>INTERIOR</b>													
Air conditioning with dust and pollen filter	S	S	—	—	—	—	—	—	—	—	—	—	
Automatic climate control with dust and pollen filter and push-button controls	—	—	S	S	S	S	S	S	S	S	S	S	
Tech Audio — includes AM/FM CD player, four speakers, auxiliary audio jack, USB 2.0 port <sup>1</sup> with iPod <sup>®2</sup> connectivity, iPod <sup>®2</sup> interface and hands-free phone capability, phone book access and music streaming <sup>3</sup> via Bluetooth <sup>®4</sup> wireless technology	S	S	—	—	—	—	—	—	—	—	—	—	

S = Standard O = Optional — = Not available P = Available as part of a package




Features<sup>15</sup> (continued)

INTERIOR (continued)	L		CVT	LE		CVT	LE ECO		6MT	S		
	6MT	4AT		CVT PLUS	CVT PREMIUM		CVT PLUS	CVT PREMIUM		CVT	CVT PLUS	CVT PREMIUM
Entune™ Audio — includes the Entune™ <sup>4</sup> Multimedia Bundle <sup>5</sup> (6.1-in. touch-screen display, AM/FM CD player, six speakers, auxiliary audio jack, USB 2.0 port <sup>1</sup> with iPod <sup>®2</sup> connectivity and control, advanced voice recognition <sup>5</sup> hands-free phone capability, phone book access and music streaming <sup>3</sup> via Bluetooth <sup>®4</sup> wireless technology)	—	—	S	S	—	S	S	—	—	S	S	—
Entune™ Premium Audio with Navigation <sup>9</sup> and App Suite <sup>10</sup> — includes the Entune™ <sup>4</sup> Multimedia Bundle <sup>5</sup> (6.1-in. high-resolution touch-screen with split-screen display, AM/FM CD player, six speakers, auxiliary audio jack, USB 2.0 port <sup>1</sup> with iPod <sup>®2</sup> connectivity and control, advanced voice recognition <sup>5</sup> hands-free phone capability, phone book access and music streaming <sup>3</sup> via Bluetooth <sup>®4</sup> wireless technology), HD Radio, <sup>TM11</sup> HD predictive traffic and Doppler weather overlay, AM/FM cache radio, SiriusXM All Access Radio <sup>12</sup> with 3-month complimentary trial, and Gracenote <sup>®</sup> album cover art	—	—	—	P	S	—	P	S	S	—	P	S
Integrated backup camera <sup>7</sup> with projected path	—	—	S	S	S	S	S	S	S	S	S	S
Fabric-trimmed 6-way adjustable driver's seat; 4-way adjustable front passenger seat	S	S	—	—	—	—	—	—	—	—	—	—
Fabric-trimmed 6-way adjustable driver's seat; 4-way adjustable front passenger seat with seatback pocket	—	—	S	S	—	S	S	—	—	—	—	—
Fabric-trimmed 6-way adjustable driver's seat with sport bolsters and sport fabric inserts; 4-way adjustable front passenger seat with sport bolsters and sport fabric inserts and seatback pocket	—	—	—	—	—	—	—	—	S	S	S	—
SofTex <sup>®</sup> -trimmed 8-way power-adjustable driver's seat; 4-way adjustable front passenger seat with seatback pocket	—	—	—	—	S	—	—	S	—	—	—	S
Driver and front passenger heated seats	—	—	—	—	S	—	—	S	—	—	—	S
60/40 split fold-down rear seat	S	S	—	—	—	—	—	—	—	—	—	—
60/40 split fold-down rear seat with center armrest and two cup holders	—	—	S	S	S	S	S	S	S	S	S	S
Cruise control	—	—	S	S	S	S	S	S	S	S	S	S
Tilt/telescopic steering wheel with audio and Bluetooth <sup>®4</sup> hands-free phone controls	S	S	—	—	—	—	—	—	—	—	—	—
Tilt/telescopic 3-spoke steering wheel with audio and Bluetooth <sup>®4</sup> hands-free phone voice-command controls	—	—	S	S	S	S	S	S	—	—	—	—
Leather-trimmed tilt/telescopic 3-spoke steering wheel with paddle shifters and audio, Multi-Information Display, Bluetooth <sup>®4</sup> hands-free phone voice-command controls	—	—	—	—	—	—	—	—	—	S	S	S
Leather-trimmed tilt/telescopic 3-spoke steering wheel with audio, Multi-Information Display, Bluetooth <sup>®4</sup> hands-free phone voice-command controls	—	—	—	—	—	—	—	—	S	—	—	—
Instrumentation with speedometer and tachometer, odometer, tripmeters, outside temperature, current/average fuel economy, cruising range; TPMS, <sup>16</sup> one-touch 3-blink lane change turn signal indicator, and warning messages	S	—	—	—	—	—	—	—	—	—	—	—
Instrumentation with speedometer and tachometer, odometer, tripmeters, outside temperature, current/average fuel economy, cruising range; shift position; TPMS, <sup>16</sup> ECO indicator, one-touch 3-blink lane change turn signal indicator, and warning messages	—	S	S	S	S	S	S	S	—	—	—	—
Sport instrumentation with speedometer and tachometer, coolant temperature, Multi-Information Display with customizable settings, odometer, tripmeters, outside temperature, current/average fuel economy, cruising range, average speed, elapsed time; TPMS, <sup>16</sup> one-touch 3-blink lane change turn signal indicator, and warning messages	—	—	—	—	—	—	—	—	S	—	—	—
Sport instrumentation with speedometer and tachometer, coolant temperature, Multi-Information Display with customizable settings, odometer, tripmeters, outside temperature, current/average fuel economy, cruising range, average speed, elapsed time, shift position; TPMS, <sup>16</sup> ECO indicator, one-touch 3-blink lane change turn signal indicator, and warning messages	—	—	—	—	—	—	—	—	—	S	S	S
Metallic interior trim with chrome interior door handles and color-keyed door panel piping	—	—	S	S	S	S	S	S	S	S	S	S
Power door locks with automatic locking feature	S	S	S	S	S	S	S	S	S	S	S	S
Multi-function in-key remote keyless entry system with lock, unlock, panic and trunk-release functions, and remote illuminated entry	—	—	S	S	S	S	S	S	—	S	S	S

S = Standard O = Optional — = Not available P = Available as part of a package

## Features (continued)

	L		CVT	LE		CVT	LE ECO		6MT	S		
	6MT	4AT		CVT PLUS	CVT PREMIUM		CVT PLUS	CVT PREMIUM		CVT PLUS	CVT PREMIUM	
<b>INTERIOR (continued)</b>												
Smart Key System <sup>9</sup> on front doors and trunk with Push Button Start, remote keyless entry system with lock, two-stage unlock, panic and trunk-release functions	—	—	—	P	S	—	P	S	S	—	P	S
Power windows with driver-side one-touch up/down	S	S	S	S	S	S	S	S	S	S	S	S
Rear window defogger with timer	S	S	S	S	S	S	S	S	S	S	S	S
Day/night rearview mirror	S	S	S	S	S	S	S	S	S	S	S	S
Overhead console with maplights	S	S	S	S	S	S	S	S	S	S	S	S
Center console with storage compartment	S	S	S	S	S	S	S	S	S	S	S	S
Passenger-side glove compartment	S	S	S	S	S	S	S	S	S	S	S	S
Front- and rear-door storage pockets with sculpted bottle holders	S	S	S	S	S	S	S	S	S	S	S	S
One 12V auxiliary power outlet	S	S	S	S	S	S	S	S	S	S	S	S
Two front and two rear cup holders	S	S	S	S	S	S	S	S	S	S	S	S
Digital clock	S	S	S	S	S	S	S	S	S	S	S	S
<b>SAFETY AND CONVENIENCE</b>												
 Star Safety System™ — includes Enhanced Vehicle Stability Control (VSC), <sup>17</sup> Traction Control (TRAC), Anti-lock Brake System (ABS), Electronic Brake-force Distribution (EBD), Brake Assist (BA) <sup>18</sup> and Smart Stop Technology <sup>®</sup> (SST) <sup>19</sup>	S	S	S	S	S	S	S	S	S	S	S	S
Eight airbags <sup>20</sup> — includes driver and front passenger Advanced Airbag System, driver and front passenger seat-mounted side airbags, driver knee airbag, passenger seat-cushion airbag, and front and rear side curtain airbags	S	S	S	S	S	S	S	S	S	S	S	S
Driver and front passenger Whiplash-Injury-Lessening (WIL) <sup>21</sup> seats	S	S	S	S	S	S	S	S	S	S	S	S
3-point seatbelts for all seating positions; driver-side Emergency Locking Retractor (ELR) and Automatic/Emergency Locking Retractor (ALR/ELR) on all passenger belts	S	S	S	S	S	S	S	S	S	S	S	S
Adjustable front shoulder anchors, driver and front passenger seatbelt pretensioners with force limiters	S	S	S	S	S	S	S	S	S	S	S	S
LATCH (Lower Anchors and Tethers for CHildren) includes lower anchors on outboard rear seats and tether anchors on all rear seats	S	S	S	S	S	S	S	S	S	S	S	S
Child-protector rear door locks	S	S	S	S	S	S	S	S	S	S	S	S
Energy-absorbing collapsible steering column	S	S	S	S	S	S	S	S	S	S	S	S
Front and rear energy-absorbing crumple zones with side-impact door beams	S	S	S	S	S	S	S	S	S	S	S	S
Head-impact protection structure	S	S	S	S	S	S	S	S	S	S	S	S
High-tensile-strength steel body panels	S	S	S	S	S	S	S	S	S	S	S	S
Tire Pressure Monitor System (TPMS) <sup>16</sup>	S	S	S	S	S	S	S	S	S	S	S	S
Engine immobilizer <sup>22</sup>	S	S	S	S	S	S	S	S	S	S	S	S
<b>Packages and Options</b>												
Moonroof — Power tilt/slide moonroof with sliding sunshade	—	—	—	O	S	—	O	S	S	—	O	S
<b>Driver Convenience Package</b> (requires moonroof) Smart Key System <sup>9</sup> on front doors and trunk with Push Button Start, remote keyless entry system with lock, panic, trunk-release and liftgate functions Entune™ Premium Audio with Navigation <sup>9</sup> and App Suite <sup>10</sup> — includes the Entune™ Multimedia Bundle <sup>5</sup> (6.1-in. high-resolution touch-screen with split-screen display, AM/FM CD player, six speakers, auxiliary audio jack, USB 2.0 port <sup>1</sup> with iPod <sup>®22</sup> connectivity and control, advanced voice recognition <sup>6</sup> , hands-free phone capability, phone book access and music streaming <sup>3</sup> via Bluetooth <sup>®4</sup> wireless technology), HD Radio, <sup>7M11</sup> HD predictive traffic and Doppler weather overlay, AM/FM cache radio, SiriusXM All Access Radio <sup>12</sup> with 3-month complimentary trial, and Gracenote <sup>®</sup> album cover art	—	—	—	P	S	—	P	S	S	—	P	S

S = Standard O = Optional — = Not available P = Available as part of a package



## Accessories

Corolla is packed with attitude and style, but you might want to add a few items to suit your own unique tastes. For tough climates, choose all-weather floor mats<sup>23</sup> or mudguards, and for extra style, add doorsill enhancements, illuminated doorsills or body side moldings. For a complete list of accessories, go to [toyota.com/corolla](http://toyota.com/corolla).

### EXTERIOR

Alloy wheel locks  
All-weather floor mats<sup>23</sup>  
Ashtray cup  
Body side moldings  
Cargo net — envelope<sup>13</sup>

Cargo tote<sup>13</sup>  
Cargo tray  
Carpet floor mats<sup>23</sup>  
Carpet trunk mat  
Doorsill enhancements

Emergency kit  
First aid kit  
Illuminated doorsill  
Mudguards  
Paint protection film — front bumper

Paint protection film — hood and fenders  
Rear bumper protector



Body side moldings



Cargo tray



Carpet trunk mat



Doorsill enhancements



Illuminated doorsill



Mudguards

## TOYOTA FINANCIAL SERVICES



Toyota Rewards Visa®

Toyota helps you get more out of every dollar you spend. By rewarding you for every purchase you make, the Toyota Rewards Visa® adds even more value to doing the things you love.

Turn everything you buy into points to redeem toward parts, accessories or an eligible vehicle purchase or lease at your Toyota dealer. Earn 5 points for every \$1 spent at participating Toyota dealers and 1 point for every \$1 spent everywhere else Visa is accepted.\*

Visit [www.toyotarewardsvisa.com](http://www.toyotarewardsvisa.com) for complete details.

Toyota Financial Services (TFS)<sup>†</sup> is a leading provider of automotive financial services, offering an extensive line of financing plans along with a variety of vehicle and payment protection products to Toyota customers and dealers in the U.S. For more information on TFS products and services, visit [www.toyotafinancial.com](http://www.toyotafinancial.com)

\*On approved credit. You must have a valid permanent home address in the 50 United States or the District of Columbia. Terms, conditions and restrictions apply and are fully described in the Toyota Rewards Visa Cardmember Agreement and the Toyota Rewards Program Terms and Conditions received with your card. Points earned are based on net purchases. Points-earning maximums apply and points will expire as described in the Rewards Terms and Conditions. Redemption only available at participating Toyota dealerships in the continental U.S. and Alaska. Points cannot be redeemed for cash. Please contact your participating Toyota dealer for information regarding restrictions your dealer may impose on the use of credit cards related to vehicle purchases or leases. The creditor and issuer of the Toyota Rewards Visa is Toyota Financial Savings Bank. Toyota Financial Services is a service mark used by Toyota Financial Savings Bank.

<sup>†</sup>Toyota Financial Services is a service mark for Toyota Motor Credit Corporation and Toyota Motor Insurance Services, Inc.

## WARRANTIES

Every Toyota Car, Truck and SUV is built to exceptional standards. And that's not idle boasting. We back it up with these Limited Warranty Coverages:

**Basic:** 36 months/36,000 miles (all components other than normal wear and maintenance items).

**Powertrain:** 60 months/60,000 miles (engine, transmission/transaxle, drive system, seatbelts and airbags).

**Rust-Through:** 60 months/unlimited miles (corrosion perforation of sheet metal).

**Emissions:** Coverages vary under Federal and California regulations. Refer to applicable *Warranty and Maintenance Guide* for details.

**Accessories:** For Genuine Toyota Accessories purchased at the time of the new vehicle purchase, the Toyota Accessory Warranty coverage is in effect for 36 months/36,000 miles from the vehicle's in-service date, which is the same coverage as the Toyota New Vehicle Limited Warranty.

For Genuine Toyota Accessories purchased after the new vehicle purchase the coverage is 12 months, regardless of mileage, from the date the accessory was installed on the vehicle, or the remainder of any applicable new vehicle warranty, whichever provides greater coverage, with the exception of car covers. Car covers are warranted for 12 months from the date of purchase and do not assume any coverage under the Toyota New Vehicle Limited Warranty.

You may be eligible for transportation assistance if it's necessary that your vehicle be kept overnight for repairs covered under warranty. Please see your authorized Toyota dealership for further details.

For complete details about Toyota's warranties, please visit [www.toyota.com](http://www.toyota.com), refer to the applicable *Warranty and Maintenance Guide* or see your Toyota dealer.

## DISCLOSURES

---

1. May not be compatible with all mobile phones, MP3/WMA players and like models. 2. iPod® is a registered trademark of Apple Inc. All rights reserved. 3. Apps/services vary by phone/carrier; functionality depends on many factors. Select apps use large amounts of data; you are responsible for charges. Apps and services subject to change. See [toyota.com/entune](http://toyota.com/entune) for details. 4. Concentrating on the road should always be your first priority while driving. Do not use the hands-free phone system if it will distract you. The Bluetooth® word mark and logos are registered trademarks owned by Bluetooth SIG, Inc. and any use of such marks by Toyota is under license. A compatible Bluetooth®-enabled phone must first be paired. Phone performance depends on software, coverage and carrier. 5. Entune™ is a trademark of Toyota Motor Corporation. Always drive safely, obey traffic laws and focus on the road while driving. Services vary by phone/carrier. Functionality depends on many factors. Services subject to change. For enrollment and more details, see [toyota.com/entune](http://toyota.com/entune). 6. Advanced voice recognition capabilities vary by head unit. 7. The backup camera does not provide a comprehensive view of the rear area of the vehicle. You should also look around outside your vehicle and use your mirrors to confirm rearward clearance. Cold weather will limit effectiveness and view may become cloudy. 8. The Smart Key System may interfere with some pacemakers or cardiac defibrillators. If you have one of these medical devices, please talk to your doctor to see if you should deactivate this system. 9. Be sure to obey traffic regulations and maintain awareness of road and traffic conditions at all times. Availability and accuracy of the information provided by the navigation system is dependent upon many factors. Use common sense when relying on information provided. Services and programming subject to change. Services not available in every city or roadway; updates may be available at an additional cost from your dealer. See your *Navigation System Owner's Manual* for details. 10. Be sure to obey traffic regulations and maintain awareness of road and traffic conditions at all times. Apps/services vary by phone/carrier; functionality depends on many factors. Select apps use large amounts of data; you are responsible for charges. Apps and services subject to change. See [toyota.com/entune](http://toyota.com/entune) for details. 11. Be sure to obey traffic regulations and maintain awareness of road and traffic conditions at all times. HD Radio™ Technology manufactured under license from iBiquity Digital Corporation U.S. and Foreign Patents. HD Radio™ and the HD, HD Radio, and "Arc" logos are proprietary trademarks of iBiquity Digital Corp. 12. SiriusXM services require a subscription after 3-month trial period. **Subscriptions governed by SiriusXM Customer Agreement available at [siriusxm.com](http://siriusxm.com). If you decide to continue your SiriusXM service at the end of your complimentary trial, the plan you choose will automatically renew and bill at then-current rates until you call 1-866-635-2349 to cancel.** Fees and programming subject to change. Available only to those at least 18 years of age in the 48 contiguous United States and D.C. 13. Cargo and load capacity limited by weight and distribution. 14. 2015 Corolla LE Eco EPA 30 city/42 hwy/35 combined mpg estimates. Actual mileage will vary. Does not include LE Eco Plus and LE Eco Premium. 15. Toyota strives to build vehicles to match customer interest and thus they typically are built with popular options and option packages. Not all options/packages are available separately and some may not be available in all regions of the country. See [toyota.com](http://toyota.com) for information about options/packages commonly available in your area. If you would prefer a vehicle without any or with different options, contact your dealer to check for current availability or the possibility of placing a special order. 16. The Toyota Tire Pressure Monitor alerts the driver when tire pressure is critically low. For optimal tire wear and performance, tire pressure should be checked regularly with a gauge; do not rely solely on the monitor system. See your *Owner's Manual* for details. 17. Vehicle Stability Control (VSC) is an electronic system designed to help the driver maintain vehicle control under adverse conditions. It is not a substitute for safe driving practices. Factors including speed, road conditions and driver steering input can all affect whether VSC will be effective in preventing a loss of control. Please see your *Owner's Manual* for further details. 18. Brake Assist is designed to help the driver take full advantage of the benefits of ABS. It is not a substitute for safe driving practices. Braking effectiveness also depends on proper brake-system maintenance and tire and road conditions. 19. Smart Stop Technology® operates only in the event of certain simultaneous brake and accelerator pedal applications. When engaged, the system will reduce power to help the brakes bring the vehicle to a stop. Factors including speed, road conditions and driver input can all impact stopping distance. Smart Stop Technology® is not a substitute for safe and attentive driving and does not guarantee instant stopping. Please see your *Owner's Manual* for further details. 20. All the airbag (AB) systems are Supplemental Restraint Systems. All ABs (if installed) are designed to inflate only under certain conditions and in certain types of severe collisions: frontal and knee ABs typically inflate in frontal collisions; side and side curtain ABs in side collisions; Roll-Sensing Curtain ABs at a severe tilt degree, roll or lateral G-force. In all other accidents, the ABs will not inflate. To decrease the risk of injury from an inflating AB, always wear seatbelts, sit upright in the middle of the seat as far back as possible and do not lean against the door. Do not put objects in front of an AB or around the seatback. Do not use a rearward-facing child seat in any front passenger seat. The force of an inflating AB may cause serious injury or death. See your *Owner's Manual* for further information/warnings. 21. Whiplash-Injury-Lessening front seats can help reduce the severity of whiplash injury in certain rear-end collisions. 22. The engine immobilizer is a state-of-the-art anti-theft system. When you insert your key into the ignition switch or bring a Smart Key fob into the vehicle, the key transmits an electronic code to the vehicle. The engine will only start if the code in the transponder chip inside the key/fob matches the code in the vehicle's immobilizer. Because the transponder chip is embedded in the key/fob, it can be costly to replace. If you lose a key or fob, your Toyota dealer can help. Alternatively, you can find a qualified independent locksmith to perform high-security key services by consulting your local Yellow Pages or by contacting [www.aloa.org](http://www.aloa.org). 23. This floor mat was designed specifically for use in your model and model year vehicle and SHOULD NOT be used in any other vehicle. To avoid potential interference with pedal operation, each mat must be secured with retention hooks/clips. Do not install a floor mat on top of an existing floor mat.

Some vehicles are shown with available equipment. Seatbelts should be worn at all times. For details on vehicle specifications, standard features and available equipment in your area, contact your Toyota dealer. A vehicle with particular equipment may not be available at the dealership. Ask your Toyota dealer to help locate a specifically equipped vehicle.

All information presented herein is based on data available at the time of posting, is subject to change without notice and pertains specifically to mainland U.S.A. vehicles only. Prototypes shown. Actual production vehicles may vary.

## FOCUS ON SUSTAINABILITY

---

Toyota encourages their partners to embrace environmentally responsible business practices. Toyota brochures use paper from well-managed forests, as certified by FSC® (Forest Stewardship Council™) chain-of-custody guidelines. The electricity used to manufacture this paper was generated by the paper mill's own Green-e® certified renewable energy sources. Wind-powered electricity was used to print some brochures through purchased REC (renewable energy credits), also Green-e® certified.