

RAV4

2013



Endless adventures

Three models ready to take you wherever you want to go

Let's rediscover our sense of adventure. That's the inspiration behind the completely redesigned 2013 RAV4. We built a vehicle that is the perfect partner for fun with friends and family. We sculpted a sleek exterior and filled the interior with soft, inviting materials. It has room for all your stuff, enough power to get you there, and offers all the latest technology to keep you connected. Call your friends. Let's get this adventure started.



LE shown in Black with available roof rails.

LE MODEL HIGHLIGHTS

Exterior features

- 17-inch steel wheels with wheel covers
- Projector-beam headlights
- Automatic Limited-Slip Differential (Auto LSD)
- Color-keyed rear spoiler
- Power outside mirrors
- Privacy glass
- Daytime Running Lights (DRL)

Interior features

- Air conditioning with cabin air filter
- Display Audio with 6.1-inch touch-screen with integrated backup camera¹ display

- Tilt/telescopic steering wheel with audio and Bluetooth^{®2} hands-free phone controls
- ECO and Sport Modes
- Soft-touch interior accents
- Fabric-trimmed 60/40 split, reclining fold-flat second-row seat
- Remote keyless entry system
- Power windows and door locks

Options

- Roof rails
- Cargo area tonneau cover

See numbered footnotes in Disclosures section.



XLE shown in Barcelona Red Metallic.

Limited shown in Magnetic Gray Metallic.

XLE MODEL HIGHLIGHTS Adds to or replaces features offered on LE

Exterior features

- 17-inch alloy wheels
- Power tilt/slide moonroof with sunshade
- Color-keyed heated power outside mirrors with turn signal indicators
- Integrated fog lights
- Roof rails

Interior features

- Dual zone automatic climate control with cabin air filter
- 6-way adjustable driver's seat with sport bolsters

- 4-way adjustable front passenger seat with sport bolsters
- French-stitching accents
- Cargo area tonneau cover

Options

- Display Audio with Navigation³ and Entune^{®4} with SiriusXM Radio⁵ with 90-day complimentary trial

LIMITED MODEL HIGHLIGHTS Adds to or replaces features offered on XLE

Exterior features

- 18-inch alloy wheels
- Adjustable power liftgate with jam protection
- Projector-beam headlights with auto on/off feature

Interior features

- SofTex[®]-trimmed seating
- 8-way power-adjustable driver's seat with memory function and power lumbar support
- Driver and front passenger heated seats
- Smart Key System⁶ with Push Button Start
- Tilt/telescopic leather-trimmed steering wheel with audio and Bluetooth^{®2} hands-free phone controls

Options

- Display Audio with Navigation and Entune[®] with SiriusXM Radio with 90-day complimentary trial
- Display Audio with Navigation, Entune[®] and JBL[®] with SiriusXM Radio with 90-day complimentary trial
- Blind Spot Monitor (BSM)⁷ with Rear Cross-Traffic Alert (RCTA)⁸

See numbered footnotes in Disclosures section.

A distinct space

Interior



Limited interior shown in Terracotta with available Display Audio with Navigation, Entune® and JBL®

A soft-touch interior, available French stitching and an audio system with a standard 6.1-inch touch-screen and Multi-Information Display create a welcoming interior. With the available Smart Key® fob in your pocket or purse, you can lock and unlock the doors and liftgate with one touch and start the vehicle with the push of a button. The Limited model (shown) is available with Display Audio with Navigation³ and Entune,⁴ 11 JBL® GreenEdge™ speakers in seven locations with a subwoofer and amplifier, and SiriusXM Radio⁵ with a 90-day complimentary trial. The leather-trimmed steering wheel incorporates audio, Bluetooth^{®2} and Multi-Information Display controls.



Entune® The available Entune® multimedia system offers popular mobile applications including Bing,™ iHeartRadio, MovieTickets.com, OpenTable® and Pandora.® Plus, you'll get access to a wealth of valuable data services, including fuel prices, stocks, sports, traffic and weather.

Backup Camera RAV4's standard backup camera helps guide you into, or out of, the tight spots. When you shift into Reverse, the 6.1-inch touch-screen on the dash displays an image of what the camera sees behind you.

See numbered footnotes in Disclosures section.

The perfect travel partner

Comfort and convenience

Inspiration is out there. Let's go find it. RAV4 has the capability to get you just about anywhere, plus plenty of cargo space for the things you want to take with you. With available French stitching in the interior, alloy wheels, and Display Audio with Navigation³ and Entune,^{®4} RAV4 is packed with style and technology too.



Dual Zone Automatic Climate Control⁹ Standard on XLE and Limited, this system lets you and your front passenger regulate your own environments with individual temperature controls, so you can keep your cool the entire trip.

Driver and Front Passenger Heated Seats Standard on RAV4 Limited, these SofTex[®]-trimmed seats offer multiple stages of warmth, so you can dial in the perfect degree of comfort via console-mounted switches.



Adjustable Power Liftgate RAV4 Limited's power liftgate has a height-adjustment feature. Just position the liftgate to your ideal height, press and hold the button on the liftgate, listen for the beeps, and you're done. Every time you open the liftgate, it will rise to your custom height. The liftgate also has jam protection: Packing up for the next trip just got loads easier.

73.4 Cu. Ft. of Cargo Space¹⁰ Some of the best adventures happen at the last minute. RAV4 is flexible, with rear seatbacks that easily fold flat for 73.4 cu. ft. of cargo space. Plus, with RAV4's low load-in height, everyone can help get gear in or out.

Reclining Second-Row Seats Treat your friends and family like first-class passengers. By simply pulling a handle, they can recline the seatbacks and enjoy more than 37 inches of leg room.

See numbered footnotes in Disclosures section.



Limited interior shown in Terracotta.

Power delivered precisely

Performance

From its efficient engine to its new 6-speed automatic transmission and updated suspension, RAV4 is every bit a driver's machine. And for 2013, it's available with our all-new Dynamic Torque-Control All-Wheel Drive (AWD) system. It improves handling by distributing power from front to rear, and manages the vehicle's braking system from side to side for maximum control on a variety of surfaces. RAV4's standard 2.5-liter 4-cylinder DOHC engine produces 176 horsepower along with 172 lb.-ft. of torque to make short work of long roads. And with its Dual Variable Valve Timing with intelligence (DVTE-i) technology, it's also amazingly efficient.



24/31
est. city / est. hwy

RAV4 has an appetite for adventure, not fuel. A number of improvements add up to an EPA-estimated 31 hwy mpg¹¹ for Front-Wheel Drive models, along with an Ultra Low Emission Vehicle II (ULEV-II) rating.

6-Speed Automatic Part of RAV4's impressive acceleration and improved fuel economy can be attributed to its all-new 6-speed Electronically Controlled automatic Transmission with intelligence (ECT-i). It optimizes engine power output and continually adjusts itself to suit your driving style.

ECO Mode Being a little adventurous doesn't mean you can't still save. RAV4 has an ECO Mode that helps you drive more efficiently. **Aerodynamic Efficiency** We sculpted a sleek new body. Streamlined every curve. Every panel. The result? Reduced drag, greater straight-line stability and improved fuel efficiency.

Sport Mode What makes RAV4 fun is that it hasn't forgotten the driver. Sport Mode makes the drive more spirited and gives the driver a better feel of the road.

See numbered footnotes in Disclosures section.

RAV4 XLE AWD shown in Barcelona Red Metallic.

Well prepared for the road ahead

Safety

RAV4 has a variety of active and passive safety features to help keep you safe. Standard on every new Toyota, the Star Safety System™ is a suite of six advanced safety features including Enhanced Vehicle Stability Control (VSC);¹² Traction Control (TRAC), Anti-lock Brake System (ABS), Electronic Brake-force Distribution (EBD), Brake Assist (BA)¹³ and Smart Stop Technology® (SST);¹⁴ **STAR**
SAFETY SYSTEM

To help keep children safe and secure, RAV4 has LATCH, which stands for “Lower Anchors and Tethers for CHildren.” With lower anchors on the outboard rear seats and tether anchors on all second-row seats, LATCH allows you to securely mount a child seat quickly and easily.

A New Standard of Safety RAV4 comes with a total of eight standard airbags;¹⁵ including a driver and front passenger Advanced Airbag System (A, B), driver and front passenger seat-mounted side airbags (C, D), driver knee airbag (E), front passenger seat-cushion airbag (F), and front- and second-row curtain airbags (G, H).



Blind Spot Monitor⁷ With Rear Cross-Traffic Alert⁸ Available on RAV4 Limited, the Blind Spot Monitor (BSM) with Rear Cross-Traffic Alert (RCTA) helps you see vehicles that might be in your blind spot. When BSM detects a vehicle, it warns you with a flashing indicator light on the appropriate outside mirror. RCTA works in much the same way. When you slowly back out of a driveway or parking spot, it provides audible and visual indicators to warn you of approaching vehicles.

See numbered footnotes in Disclosures section.

| Specifications

Mechanical and Performance	LE	XLE	LIMITED
Engine			
2.5-Liter 4-Cylinder DOHC 16-Valve with Dual VVT-i; 176 hp @ 6000 rpm, 172 lb.-ft. @ 4100 rpm	Standard	Standard	Standard
Ignition System			
Electronic, with Toyota Direct Ignition (TDI)	Standard	Standard	Standard
Emission Rating			
Ultra Low Emission Vehicle II (ULEV-II)	Standard	Standard	Standard
Transmission			
6-speed Electronically Controlled automatic Transmission with intelligence (ECT-i)	Standard	Standard	Standard
Drivetrain			
Front-Wheel Drive (FWD) with Automatic Limited-Slip Differential (Auto LSD)	Standard	Standard	Standard
Dynamic Torque-Control AWD	Available	Available	Available
Body Construction			
Unitized body	Standard	Standard	Standard
Suspension			
Independent MacPherson strut front suspension with stabilizer bar and hydraulic shock absorbers; double-wishbone rear suspension with coil springs, trailing arms, stabilizer bar and hydraulic shock absorbers	Standard	Standard	Standard
Steering			
Electric Power Steering (EPS); power-assisted rack-and-pinion	Standard	Standard	Standard
Turning circle diameter, curb to curb (ft.) (17-in. wheels/18-in. wheels)	34.8/NA	34.8/NA	NA/36.8
Brakes			
Power-assisted ventilated front disc brakes; solid rear disc brakes and Star Safety System™	Standard	Standard	Standard
Cold Area Package			
Heavy-duty battery, heavy-duty starter, heavy-duty heater and cold weather engine coolant	Standard	Standard	Standard
Exterior Dimensions (in.)			
Overall height (without/with roof rails)	65.4/67.1	65.4/67.1	65.4/67.1
Overall width	72.6	72.6	72.6
Overall length	179.9	179.9	179.9
Wheelbase	104.7	104.7	104.7
Track (front/rear) (17-in. wheels)	61.8/61.8	61.8/61.8	NA
Track (front/rear) (18-in. wheels)	NA	NA	61.4/61.4
Interior Dimensions (in.) (front/rear)			
Head room without moonroof	39.8/38.9	NA	NA
with moonroof	NA	38.9/38.9	38.9/38.9
Shoulder room	57.3/55.4	57.3/55.4	57.3/55.4
Hip room	54.2/48.8	54.2/48.8	54.2/48.8
Leg room	42.6/37.2	42.6/37.2	42.6/37.2
Off-Highway			
Approach/departure angle (degrees)	29/22	29/22	29/22
Ground clearance (in.)	6.3	6.3	6.3
Weights and Capacities			
Curb weight (lb.) (FWD/AWD)	3435/3550	3465/3585	3500/3610
Gross Vehicle Weight Rating (GVWR) (lb.) (FWD/AWD)	4485/4600	4485/4600	4485/4600
Cargo volume ¹⁰ (cu. ft.) behind front/rear seats	73.4/38.4	73.4/38.4	73.4/38.4
Fuel tank (gal.)	15.9	15.9	15.9
Seating capacity (standard)	5	5	5

See numbered footnotes in Disclosures section.

Specifications (continued)

	LE	XLE	LIMITED
Towing			
Towing capacity (lb.) ^{6, 17} standard	1500	1500	1500
Tires			
Type – All-Season steel-belted radial blackwalls	Standard	Standard	Standard
Spare – Temporary (165/80R17ST)	Standard	Standard	Standard
Mileage Estimates (mpg city/highway)¹¹			
4-cylinder 2WD; 4-cylinder AWD	24/31; 22/29	24/31; 22/29	24/31; 22/29

Features¹⁸

Exterior	LE	XLE	LIMITED		LE	XLE	LIMITED
Projector-beam headlights	S	S	–	Power tilt/slide moonroof with sunshade	–	S	S
Projector-beam headlights with auto on/off feature	–	–	S	Adjustable power liftgate with jam protection	–	–	S
Daytime Running Lights (DRL)	S	S	S	17-in. wide-vent steel wheels with wheel covers and P225/65R17 tires	S	–	–
Color-keyed rear spoiler with center high-mount stop light	S	S	S	17-in. alloy wheels with P225/65R17 tires	–	S	–
Integrated fog lights	–	S	S	18-in. alloy wheels with P235/55R18 tires	–	–	S
Chrome-accented grille	S	–	–	Washer-linked intermittent windshield wipers and intermittent rear window wiper	S	–	–
Chrome-accented grille with silver-highlighted lower grille	–	S	S	Washer-linked variable intermittent windshield wipers and intermittent rear window wiper	–	S	S
Black power outside mirrors with folding feature	S	–	–	Privacy glass on rear side, quarter and liftgate windows	S	S	S
Color-keyed heated power outside mirrors with turn signal indicators and folding feature	–	S	S	Rear window defogger with timer	S	S	S
Color-keyed heated power outside mirrors with turn signal and blind spot warning indicators; ¹⁹ and folding feature	–	–	O	Roof rails	O	S	S
				Acoustic noise-reducing front windshield	S	S	S
Interior							
Air conditioning with air filter	S	–	–	One-touch 3-blink turn signal indicator	S	S	S
Dual zone automatic climate control with air filter	–	S	S	Tilt/telescopic urethane steering wheel with audio, Multi-Information Display and Bluetooth ^{®2} hands-free phone controls	S	S	–
Backup camera ¹ with guidelines	S	S	S	Tilt/telescopic urethane steering wheel with audio, Multi-Information Display, Bluetooth ^{®2} hands-free phone and voice recognition controls	–	O	–
Display Audio — includes 6.1-in. touch-screen with integrated backup camera ¹ display, AM/FM CD player with MP3/WMA playback capability, six speakers in six locations, auxiliary audio jack, USB port ²⁰ with iPod ^{®21} connectivity and control, vehicle information with customizable settings, and hands-free phone capability, phone book access and music streaming via Bluetooth ^{®2} wireless technology	S	S	S	Tilt/telescopic leather-trimmed steering wheel with audio, Multi-Information Display and Bluetooth ^{®2} hands-free phone controls	–	–	S
Display Audio with Navigation ³ and Entune ^{®4} — includes 6.1-in. touch-screen with integrated backup camera ¹ display, AM/FM CD player with MP3/WMA playback capability, six speakers in six locations, SiriusXM Radio ⁵ with 90-day complimentary trial, HD Radio ^{TM22} with iTunes [®] Tagging ²³ auxiliary audio jack, USB port ²⁰ with iPod ^{®21} connectivity and control, vehicle information with customizable settings, and hands-free phone capability, phone book access, advanced voice recognition and music streaming via Bluetooth ^{®2} wireless technology	–	O	O	Tilt/telescopic leather-trimmed steering wheel with audio, Multi-Information Display, Bluetooth ^{®2} hands-free phone and voice recognition controls	–	–	O
Display Audio with Navigation ³ ; Entune ^{®4} and JBL [®] — includes 6.1-in. touch-screen with integrated backup camera ¹ display, AM/FM CD player with MP3/WMA playback capability, 11 JBL [®] GreenEdge TM speakers in seven locations including subwoofer and amplifier, SiriusXM Radio ⁵ with 90-day complimentary trial, HD Radio ^{TM22} with iTunes [®] Tagging ²³ auxiliary audio jack, USB port ²⁰ with iPod ^{®21} connectivity and control, vehicle information with customizable settings, and hands-free phone capability, phone book access, advanced voice recognition and music streaming via Bluetooth ^{®2} wireless technology	–	–	O	Soft-touch interior accents	S	S	S
Entune ^{®4} — includes Bing TM iHeartRadio, MovieTickets.com, OpenTable [®] and Pandora [®] ; real-time info including traffic, weather, fuel prices, sports and stocks. Access to Entune ^{®4} services is complimentary for three years. See toyota.com/entune for details.	–	O	O	Shift lever with silver accents	–	S	–
ECO/Sport Modes	S	S	S	Leather-trimmed shift lever with silver accents	–	–	S
Day/night rearview mirror	S	S	–	Fabric-trimmed 6-way adjustable driver's seat with seatback pocket; 4-way adjustable front passenger seat with seatback pocket	S	–	–
Auto-dimming rearview mirror	–	–	S	Fabric-trimmed 6-way adjustable driver's seat with sport bolsters and seatback pocket; 4-way adjustable front passenger seat with sport bolsters and seatback pocket	–	S	–
Cruise control	S	S	S	SoftTex [®] -trimmed 8-way power-adjustable driver's seat with memory function, power lumbar support, sport bolsters and seatback pocket; 4-way adjustable front passenger seat with sport bolsters and seatback pocket	–	–	S
				Driver and front passenger heated seats	–	–	S
				Fabric-trimmed 60/40 split, reclining, fold-flat second-row seat with center armrest	S	S	–
				SoftTex [®] -trimmed 60/40 split, reclining, fold-flat second-row seat with center armrest	–	–	S
				Power windows with driver auto down	S	–	–
				Power windows with driver auto up/down with jam protection	–	S	S
				Power door locks with shift-linked automatic lock/unlock feature	S	S	S
				Cargo area tonneau cover	O	S	S

S = Standard O = Optional – = Not Available

See numbered footnotes in Disclosures section.

Features (continued)

Interior (continued)	LE	XLE	LIMITED		LE	XLE	LIMITED
Remote keyless entry system	S	S	—	Eight cup/bottle holders	S	S	S
Smart Key System ⁶ with Push Button Start and remote power liftgate function	—	—	S	Two front 12V auxiliary power outlets	S	S	S
Illuminated entry system (key illumination, interior light and front personal light)	S	S	S	Dual sun visors with vanity mirrors	S	S	—
Center armrest with console storage box	S	S	—	Dual sun visors with vanity mirrors and extenders	—	—	S
SofTex [®] -covered sliding center armrest with console storage box	—	—	S				
Safety and Convenience							
STAR SAFETY SYSTEM [™] Star Safety System [™] — includes Enhanced Vehicle Stability Control (VSC) ¹² , Traction Control (TRAC), Anti-lock Brake System (ABS), Electronic Brake-force Distribution (EBD), Brake Assist (BA) ¹³ and Smart Stop Technology [®] (SST) ¹⁴	S	S	S	Driver-side Emergency Locking Retractor (ELR) and Automatic/Emergency Locking Retractor (ALR/ELR) on all passenger belts	S	S	S
Blind Spot Monitor (BSM) ⁷ with Rear Cross-Traffic Alert (RCTA) ⁸	—	—	O	Driver and front passenger seatbelt warning system	S	S	S
Tire Pressure Monitor System (TPMS) ²⁴	S	S	S	LATCH (Lower Anchors and Tethers for CHildren) includes lower anchors on outboard rear seats and tether anchors on all second-row seats	S	S	S
Driver and front passenger Advanced Airbag System; driver knee airbag; front passenger seat-cushion airbag; driver and front passenger seat-mounted side airbags, and front- and second-row Roll-sensing Side Curtain Airbags (RSCA) ¹⁵	S	S	S	Child-protector rear door locks	S	S	S
Driver and front passenger Whiplash-Injury-Lessening (WIL) seats ²⁵	S	S	S	Side-impact door beams	S	S	S
3-point seatbelts in all seating positions with adjustable front seatbelt anchors	S	S	S	Collapsible steering column	S	S	S
Driver and front passenger seatbelt pretensioners with force limiters	S	S	S	Front energy-absorbing crumple zone	S	S	S
				Engine immobilizer ²⁶	S	S	S
Options							
Roof rails	O	—	—	Display Audio with Navigation ³ , Entune ^{®4} and JBL [®] — includes 6.1-in. touch-screen with integrated backup camera ¹ display, AM/FM CD player with MP3/WMA playback capability, 11 JBL [®] GreenEdge [™] speakers in seven locations including subwoofer and amplifier, SiriusXM Radio ⁵ with 90-day complimentary trial, HD Radio ^{™22} with iTunes [®] Tagging ²³ auxiliary audio jack, USB port ²⁰ with iPod ^{®21} connectivity and control, vehicle information with customizable settings, and hands-free phone capability, phone book access, advanced voice recognition and music streaming via Bluetooth ^{®22} wireless technology	—	—	O
Cargo area tonneau cover	O	—	—	Blind Spot Monitor (BSM) ⁷ with Rear Cross-Traffic Alert (RCTA) ⁸	—	—	O
Display Audio with Navigation ³ and Entune ^{®4} — includes 6.1-in. touch-screen with integrated backup camera ¹ display, AM/FM CD player with MP3/WMA playback capability, six speakers in six locations, SiriusXM Radio ⁵ with 90-day complimentary trial, HD Radio ^{™22} with iTunes [®] Tagging ²³ auxiliary audio jack, USB port ²⁰ with iPod ^{®21} connectivity and control, vehicle information with customizable settings, and hands-free phone capability, phone book access, advanced voice recognition and music streaming via Bluetooth ^{®22} wireless technology	—	O	O				

S = Standard O = Optional — = Not Available

Toyota Financial Services



Toyota Rewards Visa[®]

Toyota helps you get more out of every dollar you spend. By rewarding you for every purchase you make, the Toyota Rewards Visa[®] adds even more value to doing the things you love.

Turn everything you buy into points to redeem toward parts, accessories or an eligible vehicle purchase or lease at your Toyota dealer. Earn 5 points for every \$1 spent at participating Toyota dealers and 1 point for every \$1 spent everywhere else Visa is accepted.*

Visit www.toyotarewardsvisa.com for complete details.

Toyota Financial Services (TFS)[†] is a leading provider of automotive financial services, offering an extensive line of financing plans along with a variety of vehicle and payment protection products to Toyota customers and dealers in the U.S. For more information on TFS products and services, visit www.toyotafinancial.com

*On approved credit. You must have a valid permanent home address in the 50 United States or the District of Columbia. Terms, conditions and restrictions apply and are fully described in the Toyota Rewards Visa Cardmember Agreement and the Toyota Rewards Program Terms and Conditions received with your card. Points earned are based on net purchases. Points-earning maximums apply and points will expire as described in the Rewards Terms and Conditions. Redemption only available at participating Toyota dealerships in the continental U.S. and Alaska. Points cannot be redeemed for cash. Please contact your participating Toyota dealer for information regarding restrictions your dealer may impose on the use of credit cards related to vehicle purchases or leases. The creditor and issuer of the Toyota Rewards Visa is Toyota Financial Savings Bank. Toyota Financial Services is a service mark used by Toyota Financial Savings Bank.

[†]Toyota Financial Services is a service mark for Toyota Motor Credit Corporation and Toyota Motor Insurance Services, Inc.

| Exterior Colors



Black



Shoreline Blue Pearl



Spruce Mica



Barcelona Red Metallic



Pyrite Mica



Magnetic Gray Metallic



Classic Silver Metallic



Blizzard Pearl^{27,28}



Super White²⁹

| Wheels



17-in. LE wheel



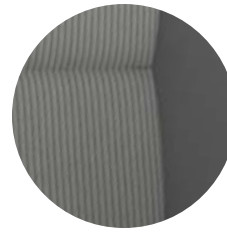
17-in. XLE wheel



18-in. Limited wheel

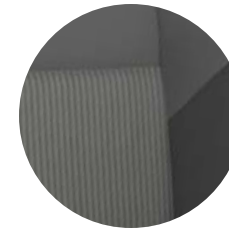
| Interior Colors

Fabric
LE



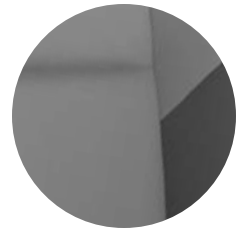
Gray

Unique Fabric
XLE



Gray

SofTex® Trim
LIMITED



Gray



Beige



Beige



Beige



Black



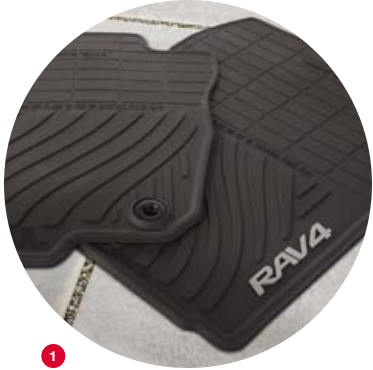
Black



Terracotta

See numbered footnotes in Disclosures section.

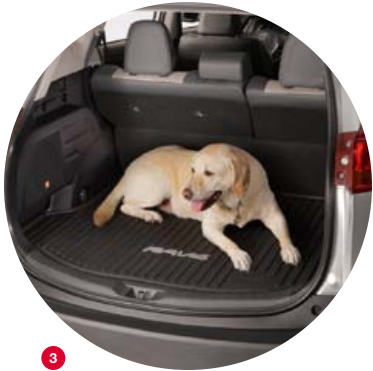
| Accessories



1



2



3



4



5

- Alloy wheel locks
- 1 All-weather floor mats³⁰
- Ashtray cup
- 2 Body side moldings
- Cargo area tonneau cover
- Cargo net — envelope
- Cargo net — hammock
- Cargo tote
- 3 Cargo tray
- Carpet cargo mat
- Carpet floor mats³⁰
- Door edge guards
- Emergency assistance kit
- First aid kit
- Front floor lighting kit
- Mudguards
- Paint protection film³¹ — front bumper
- Paint protection film³¹ — hood and fenders
- Remote Engine Starter³²
- 4 Roof rail cross bars
- Roof rails
- 5 Running boards
- Shift knob
- Vehicle Intrusion Protection (VIP) RS3200 Security System³³

Warranties

Every Toyota Car, Truck and SUV is built to exceptional standards. And that's not idle boasting. We back it up with these Limited Warranty Coverages:

Basic: 36 months/36,000 miles (all components other than normal wear and maintenance items).

Powertrain: 60 months/60,000 miles (engine, transmission/transaxle, drive system, seatbelts and airbags).

Rust-Through: 60 months/unlimited miles (corrosion perforation of sheet metal).

Emissions: Coverages vary under Federal and California regulations. Refer to applicable *Warranty and Maintenance Guide* for details.

Accessories: For Genuine Toyota Accessories purchased at the time of the new vehicle purchase, the Toyota Accessory Warranty coverage is in effect for 36 months/36,000 miles from the vehicle's in-service date, which is the same coverage as the Toyota New Vehicle Limited Warranty.

For Genuine Toyota Accessories purchased after the new vehicle purchase the coverage is 12 months, regardless of mileage, from the date the accessory was installed on the vehicle, or the remainder of any applicable new vehicle warranty, whichever provides greater coverage, with the exception of car covers. Car covers are warranted for 12 months from the date of purchase and do not assume any coverage under the Toyota New Vehicle Limited Warranty. You may be eligible for transportation assistance if it's necessary that your vehicle be kept overnight for repairs covered under warranty. Please see your authorized Toyota dealership for further details.

For complete details about Toyota's warranties, please visit www.toyota.com, refer to the applicable *Warranty and Maintenance Guide* or see your Toyota dealer.

Disclosures

1. The backup camera does not provide a comprehensive view of the rear area of the vehicle. You should also look around outside your vehicle and use your mirrors to confirm rearward clearance. Cold weather will limit effectiveness and view may become cloudy. 2. The *Bluetooth*® word mark and logos are registered trademarks owned by Bluetooth SIG, Inc. and any use of such marks by Toyota is under license. Other trademarks and trade names are those of their respective owners. The *Bluetooth*® wireless technology phones listed on toyota.com have been tested for compatibility with Toyota vehicles. Performance will vary based on phone software, coverage and wireless carrier. Phones are warranted by their manufacturer, not Toyota. 3. Availability and accuracy of the information provided by the navigation system or any XM services mentioned (if installed) are dependent upon many factors. Use common sense when relying on information provided. Services not available in every city or roadway. Periodic navigation updates available at additional cost. See your *Navigation System Owner's Manual* or contact XM for details. 4. Always drive safely, obey traffic laws and focus on the road while driving. Apps/services vary by phone/carrier; functionality depends on many factors. Select apps use large amounts of data; you are responsible for charges. Apps identified by "TM" or "@" are trademarks or registered trademarks of their respective companies. For enrollment, cost and more details, see toyota.com/entune. 5. XM services require a subscription after trial period, and are sold separately or as a package. **Subscriptions governed by SiriusXM Customer Agreement; see www.siriusxm.com. If you decide to continue your XM service at the end of your complimentary trial, the plan you choose will automatically renew and bill at then-current rates until you call 1-866-635-2349 to cancel.** Fees and programming subject to change. Available only to those at least 18 years of age in the 48 contiguous United States and D.C. 6. The Smart Key System may interfere with some pacemakers or cardiac defibrillators. If you have one of these medical devices, please talk to your doctor to see if you should deactivate this system. 7. Do not rely exclusively on the Blind Spot Monitor. Always look over your shoulder and use your turn signal. There are several limitations to the function, detection, range and clarity of the monitor. For a complete list of limitations and directions regarding use of the monitor, please see the *Owner's Manual*. 8. Do not rely exclusively on the Rear Cross-Traffic Alert system. Always look over your shoulder and use your mirrors to confirm rear clearance. There are limitations to the function, detection, range and clarity of the system. To learn more, see your *Owner's Manual*. 9. Standard on XLE and Limited. 10. Cargo and load capacity limited by weight and distribution. 11. 2013 EPA-estimated mileage. Actual mileage will vary. 12. Vehicle Stability Control (VSC) is an electronic system designed to help the driver maintain vehicle control under adverse conditions. It is not a substitute for safe driving practices. Factors including speed, road conditions and driver steering input can all affect whether VSC will be effective in preventing a loss of control. Please see your *Owner's Manual* for further details. 13. Brake Assist is designed to help the driver take full advantage of the benefits of ABS. It is not a substitute for safe driving practices. Braking effectiveness also depends on proper brake-system maintenance and tire and road conditions. 14. Smart Stop Technology® operates only in the event of certain simultaneous brake and accelerator pedal applications. When engaged, the system will reduce power to help the brakes bring the vehicle to a stop. Factors including speed, road conditions and driver input can all impact stopping distance. Smart Stop Technology® is not a substitute for safe and attentive driving and does not guarantee instant stopping. Please see your *Owner's Manual* for further details. 15. All the airbag (AB) systems are Supplemental Restraint Systems. All ABs (if installed) are designed to inflate only under certain conditions and in certain types of severe collisions: frontal and knee ABs typically inflate in frontal collisions; side and side curtain ABs in side collisions; Roll-Sensing Curtain ABs at a severe tilt degree, roll or lateral G-force. In all other accidents, the ABs will not inflate. To decrease the risk of injury from an inflating AB, always wear seatbelts, sit upright in the middle of the seat as far back as possible and do not lean against the door. Do not put objects in front of an AB or around the seatback. Do not use a rearward-facing child seat in any front passenger seat. The force of an inflating AB may cause serious injury or death. See your *Owner's Manual* for further information/warnings. 16. Before towing, confirm your vehicle and trailer are compatible, hooked up and loaded properly and that you have any necessary additional equipment. Do not exceed any Weight Ratings and follow all instructions in your *Owner's Manual*. The maximum you can tow depends on the total weight of any cargo, occupants and available equipment. Calculated with new SAE J2807 method. 17. Additional equipment required. Please discuss your towing requirements with either your Toyota dealer or a professional supplier of towing equipment before you equip your Toyota vehicle for towing. Before towing, confirm your vehicle has any necessary additional equipment (including a properly installed tow hitch). Your vehicle is designed primarily as a passenger-and-load carrying vehicle. Towing a trailer will have an adverse effect on handling, performance, braking, durability and driving economy (fuel consumption, etc.). 18. Toyota strives to build vehicles to match customer interest and thus they typically are built with popular options and option packages. Not all options/packages are available separately and some may not be available in all regions of the country. See toyota.com for information about options/packages commonly available in your area. If you would prefer a vehicle without any or with different options, contact your dealer to check for current availability or the possibility of placing a special order. 19. Do not rely exclusively on the blind spot mirrors. Always look over your shoulder and use your turn signal. There are limitations to the function, detection, range and clarity of the mirrors. To learn more, see your *Owner's Manual*. 20. May not be compatible with all mobile phones, MP3/WMA players and like models. 21. iPod® is a registered trademark of Apple Inc. All rights reserved. 22. HD Radio™ Technology manufactured under license from iBiquity Digital Corporation U.S. and Foreign Patents. HD Radio™ and the HD, HD Radio, and "Arc" logos are proprietary trademarks of iBiquity Digital Corp. 23. iTunes® Tagging is a registered trademark of Apple Inc. All rights reserved. 24. The Toyota Tire Pressure Monitor alerts the driver when tire pressure is critically low. For optimal tire wear and performance, tire pressure should be checked regularly with a gauge; do not rely solely on the monitor system. See your *Owner's Manual* for details. 25. Whiplash-Injury-Lessening front seats can help reduce the severity of whiplash injury in certain rear-end collisions. 26. The engine immobilizer is a state-of-the-art anti-theft system. When you insert your key into the ignition switch or bring a Smart Key fob into the vehicle, the key transmits an electronic code to the vehicle. The engine will only start if the code in the transponder chip inside the key or Smart Key fob matches the code in the vehicle's immobilizer. Because the transponder chip is embedded in the key or Smart Key fob, it can be costly to replace. If you lose a key or Smart Key fob, your Toyota dealer can help. Alternatively, you can find a qualified independent locksmith to perform high-security key services by consulting your local Yellow Pages or by contacting www.aloa.org. 27. Extra-cost color. 28. Available on Limited models only. 29. Not available on Limited models. 30. To avoid potential interference with pedal operation, do not install a floor mat on top of an existing floor mat, and each mat must be secured with either quarter-turn fasteners or retention hooks (clips). This floor mat was designed specifically for use in this model year vehicle and SHOULD NOT be used in any other vehicle. 31. The Toyota Genuine Accessory Warranty will only apply when the installation is performed by a Toyota-trained installer. Please see dealer for details. 32. Available only with vehicles equipped with Smart Key System. 33. Available for vehicles equipped with factory remote keyless entry or Smart Key System. Not applicable for 2013 RAV4 vehicles produced in Japan. Please contact your Toyota dealer.

Toyota RAV4 is designed to meet most off-road driving requirements. Abusive use may result in bodily harm or damage. Toyota encourages responsible operation to protect you, your vehicle and the environment. Seatbelts should be worn at all times. Please do not allow passengers to ride in the cargo area. Towing receiver hitches/ball mount kits are not intended to provide crash protection.

For details on vehicle specifications, standard features and available equipment in your area, contact your Toyota dealer. A vehicle with particular equipment may not be available at the dealership. Ask your Toyota dealer to help locate a specifically equipped vehicle.

All information presented herein is based on data available at the time of posting, is subject to change without notice and pertains specifically to mainland U.S.A. vehicles only. Prototypes shown. Actual production vehicles may vary.



For Toyota Mobility program details, go to www.toyota.com/mobility or call the Toyota Customer Assistance Center at 1-800-331-4331

