

LSC



Luxury and
Performance



Lincoln Mark VIII ISC (Luxury Sport Coupe)

Lincoln—*what a luxury car should be*—offers a special edition Luxury Sport Coupe, the Mark VIII ISC. The ISC is packaged specifically for the discriminating buyer who wants to step out with crisp, sleek aerodynamic styling and spirited performance, but with all the comfort and convenience of a luxury vehicle.

You will truly climb away from other high performance luxury vehicles. The Mark VIII ISC drivetrain sports the dynamic 290-HP 32-valve InTech™ V8 engine, a high-response 4-speed automatic

electronic overdrive transmission, and a quick 3.27:1 axle. Take off from 0 to 60 in a very agile 7.6 seconds, while being thrust back in full comfort against the 4-way head restraints and supple 6-way power driver and passenger Euro perforated leather seating surfaces... with perfect posture from the powered lumbar support. It's all yours in the luxurious Burl Walnut wood-accented ISC cockpit.

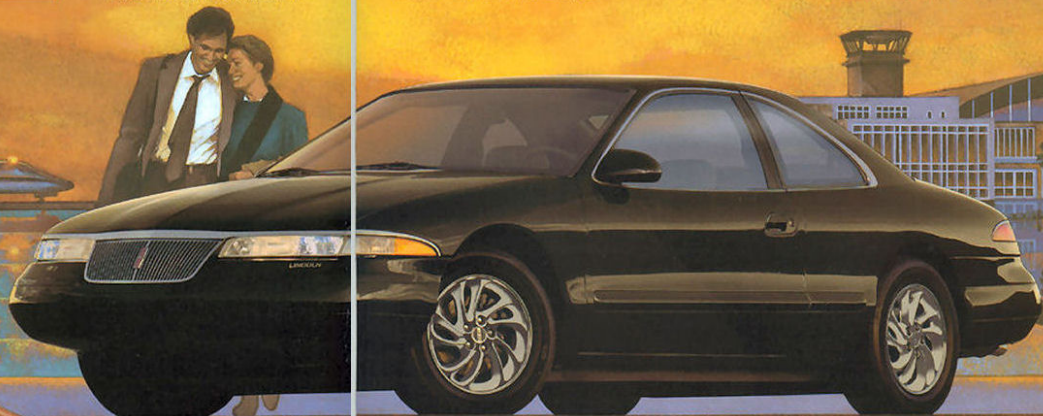
And feast your eyes on the exciting Directional Wheels. Combined with jet-slippery aerodynamic Mark VIII styling, the ISC wheels speak a language that only performance enthusiasts understand...FAST...even while standing still.

ISC is equipped with the new standard InTech™ System. This technologically advanced engine system provides 100,000 mile scheduled tune-up intervals along with other intelligent technologies.

The Mark VIII ISC also sports a domestic industry-first application of the High-Intensity Discharge (HID) headlight system. The next generation HID ionized-gas light bulb provides greater illumination, with a bluish-glow and will last longer than standard halogen headlights.

The total look and feel of the Mark VIII ISC special edition surely will mark you as a leader, ready for take-off, with an uncompromising flair for personal luxury and performance.

LINCOLN
What A Luxury Car Should Be



Mark VIII LSC Standard Features

290-HP 4.6 Liter 32-Valve DOHC V8 InTech™ Power
4-Speed Electronic Automatic Overdrive Transmission
with O/D Lockout
3.27:1 Rear Axle
True Dual Exhaust with Exposed Chrome Tips
Next Generation High-Intensity Discharge (HID) Headlights
Euro Perforated Leather Seating Surfaces
Monochromatic Exterior (Body color facias and body side moldings)
Painted Directional Wheels
Upgauged Rear Stabilizer Bar
InTech™ System with 100,000 Mile Scheduled Tune-up Interval
4-Wheel Anti-Lock Brake System
Driver and Right Front Passenger Air Bag System*
Remote Keyless Entry System/Panic Button
Speed-Sensitive Variable-Assist Power Steering
Computer-Managed Air Suspension
Electronic Tripminder Message Center
6-Way Power Front Seats with Power Recliners, Lumbar Support,
& 4-Way Head Restraints
Programmable Garage Door Opener
Burl Walnut Interior Wood Applique
and much, much more

Mark VIII LSC Monochromatic Exterior Paint Options

Garnet Red Glaze Clearcoat Metallic
Deep Jewel Green Clearcoat Metallic
Ivory Pearlescent Clearcoat (Extra-cost Tri-coat)
Midnight Black Clearcoat
Dark Portofino Blue Clearcoat Metallic
Opal Opalescent Clearcoat (Extra-cost Tri-coat)

Interior Colors

Light Graphite • Ebony • Saddle

This special edition Mark VIII LSC combines the traditional elegance, comfort and convenience of a Lincoln with the spirited and nimble handling of an exciting luxury performance car. The result is the aerodynamically sleek, boldly agile, special edition Mark VIII LSC.

Available now for purchase or lease at your Lincoln dealer.



 **LINCOLN**

What A Luxury Car Should Be

*Always wear your safety belt.