

# FULL-SIZE BLAZER







Shown here: Blazer 4x4 Silverado with Exterior Decal Package in Doerskin Tan and Apple Red.

Shown on cover: Blazer 4x4 Silverado in Steel Gray Metallic with standard color-keyed top. Tires supplied by various manufacturers.

## FULL-SIZE BLAZER. BACK-COUNTRY ROUGHNECK.

Come away to the blue haze of mountains, the fresh scent of forest, and streams filled with fish eager to bite.

Come away in Blazer, Chevy's tough combination of man-size muscle and family-style room.

Blazer is 4,444 lbs. of tough, to be exact, in a full-size 4x4 that loves to wind through the wilderness. Then, quickly and easily, Blazer becomes a freewheeling street cruiser ready for a night on the town.

Moving Blazer is a 5.0 Liter V8 engine (5.7 Liter V8 required in California, 6.2L Diesel available on diesel models), an aggressive powerplant that navigates the highway as easily as it negotiates an uphill climb.

And when you add the available automatic locking hub system—dependable manual locking hubs are standard—you can take advantage of Blazer's 4x4 capabilities while shifting into 4WD High at speeds up to 25 MPH — without even leaving the cab.



Anybody who knows Blazer won't be surprised by its thrill-seeking tendencies. After all, under this attractive exterior lies the same type of rugged framework that undergirds Chevy's 4x4 half-ton trucks.

That's the kind of toughness that gives you real freedom of movement, almost anywhere you decide to go.







## **FULL-SIZE BLAZER. ROOM AND COMFORT TO MATCH ITS MUSCLE.**

Blazer believes in being tough on everything but people, a fact you'll understand the moment you step inside.

As you settle into one of the front buckets, you'll find yourself sitting on full-foam cushioning. The front passenger seat folds forward, allowing access to Blazer's available three-passenger rear bench.

Even with a full complement of five occupants, Blazer makes plenty of room for cargo, with an 800-lb. load capacity

behind the rear seat. Or you can open up nearly five feet of load length if you fold the rear seat out of the way. A wagon-style tailgate makes Blazer's cavernous interior readily accessible whether you're hauling people or a pile of gear.

And notice how Blazer takes advantage of this full-size cabin to keep you comfortable.

With a fully padded instrument panel, day/night mirror, three interior lamps, available locking center console and more.

Working with these comfort and convenience features are important components you can't see — double-acting shocks, stabilizer bar, and reverse-arch front springs that lower body height without reducing clearance. It all adds up to an impressive level of riding comfort, in any type of terrain.

Available Silverado trim includes brushed aluminum door and instrument panel trim, color-keyed carpeting and Custom steering wheel. Shown in Blue Custom Cloth with available rear bench seat.

Custom Deluxe trim in Blue Vinyl. Features include full-foam-padded front seats, color-keyed door trim panels, integrated armrests and tinted glass.

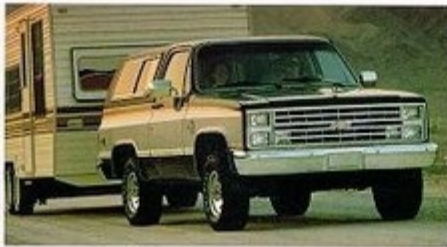




**Appearance and Convenience Options**

	K10
Air Cleaner — Precleaner	B
Air Conditioning	B
Bright Metal Wheel Covers	B
Bumpers	
Chromed Front Bumper Guards	B
Deluxe Front and Rear	B
Cigarette Lighter	B
Color-Keyed Floor Mats	B
Comfort Steering Wheel	B
Deluxe Front Appearance	B
Electric Quartz Clock	B
Glass, Deep-Tinted	B
Glass, Sliding Side Window	B
Halogen Headlamps	B
Headlight Warning Buzzer	B
Headliner, Full-Length Interior	B
Inherent Windshield Wipers	B
Mirrors	
Painted Below Eyeline	B
Stainless Steel Below Eyeline	B
Moldings	
Body Side — Black	B
Body Side — Bright	B
Molding Package — Black	B
Molding Package — Bright	B
Door Edge Guards	B
Operating Convenience Package	B
Power Door Locks	B
Power Windows	B

**OPTIONS AND FACTS.**



If you're into heavy hauling, Blazer's your kind of 4x4. Equipped with the heavy-duty trailering package, Blazer can move up to 11,000 lbs. of Blazer, trailer, cargo, equipment and crew. Blazer 4x4

Silverado shown with Exterior Decor Package in Black and Silver. Tires supplied by various manufacturers. (Trailering package not available in California.)



Use Blazer to make your mark in snow country. Special equipment is required. Consult your Chevy dealer and snow-

plow distributor for details. Blazer 4x4 Custom Deluxe shown in Indian Bronze Metallic with color-keyed top.

Blazer 4x4 Silverado in Black with luggage rack (dealer-installed), deep-tinted windows, sliding side windows, power rear window and styled wheels. Tires supplied by various manufacturers.

**Performance and Heavy-Duty Equipment Options**

	K10
Cold Climate Package	G
Coolers	
Engine Oil	G
Transmission Oil	B
Cruise Control	B
Deadweight Trailer Hitch	B
Front Quad Shocks	B
Front Stabilizer Bar	B
Front Tow Hooks	B
Fuel Tank, 31-Gallon	B
Fuel Tank, Stone Shield Plate	B
Gages	
Volt, Temperature, Oil	B
Generator, 66-Amp	G
Heavy-Duty Battery	G
Heavy-Duty Front Springs	B
Heavy-Duty Radiator	G
Hubs, Automatic Locking Front	B
Locking Rear Axle Differential	B
Trailering Special Equipment	B
Trailer Wiring Harness	B
Weight-Distributing Hitch Platform	B



**Full-Size Blazer Paint Treatments**



Color-Keyed Top is standard in your choice of six colors. Or, if you prefer, Black and White tops are also available.



Special Two-Tone includes black vinyl body side and rear moldings, with Color Code 2 applied below. (Optional.)



Exterior Decor Package includes moldings and side and rear door striping, with Color Code 2 between moldings and striping. (Optional.)



Styled wheels.



Rally Wheels.



Cast aluminum wheels.



Electronic speed control and intermittent wiper shown on standard multi-function switch.

**Interior and Exterior Color Availability Chart**

Interior Colors by Trim Levels	Blue	Burgandy	Saddle Tan	Slate Gray
CUSTOM DELUXE Vinyl High-Back Bucket Seats				
Custom Vinyl High-Back Bucket Seats				
SILVERADO Custom Vinyl High-Back Bucket Seats				
Custom Cloth High-Back Bucket Seats				
<b>Exterior Colors</b>	<b>Color Code 1</b>	<b>Color Code 2</b>	<b>Top Color*</b>	<b>Recommended Interior Trim Color</b>
<b>BLACK, MIDNIGHT</b>				
Gray, Steel (Metallic)				
Tan, Doeskin				
White, Frost				
<b>BLUE, LIGHT (Metallic)</b>				
White, Frost				
<b>BLUE, MIDNIGHT</b>				
Blue, Light (Metallic)				
White, Frost				
<b>BRONZE, INDIAN (Metallic)</b>				
White, Frost				
<b>GRAY, STEEL (Metallic)</b>				
Black, Midnight				
White, Frost				
<b>RED, APPLE</b>				
White, Frost				
<b>TAN, DOESKIN</b>				
Black, Midnight				
White, Frost				
<b>WHITE, FROST</b>				
Black, Midnight				
Blue, Light (Metallic)				
Blue, Midnight				
Gray, Steel (Metallic)				
Red, Apple				
Tan, Doeskin				
<b>Exterior Decor Package</b>				
<b>BLACK, MIDNIGHT/Red, Apple</b>				
<b>BLACK, MIDNIGHT/Gray, Steel (Metallic)</b>				
<b>BLACK, MIDNIGHT/Tan, Doeskin</b>				
<b>BLACK, MIDNIGHT/White, Frost</b>				
<b>BLUE, MIDNIGHT/Blue, Light (Metallic)</b>				
<b>BLUE, MIDNIGHT/Gray, Steel (Metallic)</b>				
<b>BRONZE, INDIAN (Metallic)/Tan, Doeskin</b>				
<b>BRONZE, INDIAN (Metallic)/White, Frost</b>				
<b>GRAY, STEEL (Metallic)/Black, Midnight</b>				
<b>GRAY, STEEL (Metallic)/Blue, Light (Metallic)</b>				
<b>GRAY, STEEL (Metallic)/Blue, Midnight</b>				
<b>GRAY, STEEL (Metallic)/Red, Apple</b>				
<b>TAN, DOESKIN/Black, Midnight</b>				
<b>TAN, DOESKIN/Red, Apple</b>				
<b>WHITE, FROST/Black, Midnight</b>				
<b>WHITE, FROST/Tan, Doeskin</b>				

\*Multiple color chips indicate your choice of color keyed, black or white top.

Specifications	K10—4-Wheel-Drive Gas		K10—4-Wheel-Drive Diesel	
Series	K10		K10	
GVW Range (lb.)	6100		6250	
Availability	Standard	Optional	Standard	Optional
Engine—Liter (Cu. In.)	5.0L (305 Cu. In.) V8 w/ E30	5.7L (350 Cu. In.) V8	6.2L (379 Cu. In.) V8	—
Front Suspension—Type Spring	Hybrid Driving Axle Leaf Springs		Hybrid Driving Axle Leaf Springs	
Axle Capacity (lb.)	3000		3000	
Rear Suspension—Axle Type	Semi-Floating		Semi-Floating	
Capacity (lb.)	3750		3750	
Brakes—Disc/Drum	—/Power	—/Power	Power/Power	—/Power
Steering—Type	Power		Power	
Transmission	4-Speed Manual*		4-Speed Auto./O.D.	
Transfer Case—Auto. Locking Front Hubs	Conventional NP 208		Conventional NP 208	
Tire Size, Tubeless	P215/75R-15		P215/75R-15	

\*Not Available in California #California Only \*Larger Size Tubeless Tire Available

Engine Specifications	5.0 (305)	5.7 (350)	6.2 (379)
Displacement—Liter (Cu. In.)	4-82l V8*1	4-82l V8e	V8 Diesel
Engine Ordering Code	1E3(A)	1S9	1H6
Bore & Stroke (in.)	3.74 x 3.48	4.0 x 3.48	3.98 x 3.62
Compression Ratio	9.2 to 1	8.2 to 1	21.3 to 1
SAE Net Horsepower @ RPM	160 @ 4400	165 @ 3800	130 @ 3600
SAE Net Torque (lb.-ft.) @ RPM	235 @ 2000	275 @ 1600	240 @ 2000

\*With Electronic Spark Control. †Not Available in California. #California Only (A)Produced in U.S. or Canada

**Important: A word about this catalog.** We have tried to make this catalog as comprehensive and factual as possible and we hope you find it helpful. However, since the time of printing, some of the information you will find here may have been updated. Also, some of the equipment shown or described throughout this catalog is available as factory-installed options, dealer accessories, and specialized equipment from various independent suppliers at extra cost. Your dealer has details and, before ordering, you should ask him to bring you up to date. The right is reserved to make changes at any time, without notice, in prices, colors, materials, equipment, specifications and models. Check with your Chevrolet dealer for complete information.

**Commitment to Excellence**  
Chevrolet enhances your ownership experience with its "Commitment to Excellence," a customer satisfaction program that brings you an extensive system of services and benefits. The program includes:  
 ■ Vehicle identification cards to speed your service request at the dealership.  
 ■ Special rates and reservation service at participating hotels, motels and car rental agencies.  
 ■ Hotel/motel and car rental guides.  
 ■ Preregistered key return service.  
 ■ A "Let's Talk" booklet of service signals.  
 ■ A glove compartment organizer.  
 ■ An improved delivery procedure that includes an inspection checklist and orientation drive.  
 Chevrolet's "Commitment to Excellence" is another way Chevrolet takes care of you for as long as you own your truck.

Blazers described in this catalog (Series K10) are assembled at facilities operated by General Motors or GM of Canada. These vehicles incorporate thousands of different components produced by car and truck groups and various component divisions of GM and by various suppliers worldwide to General Motors. From time to time during the manufacturing process, it may be necessary, in order to meet public demand for particular vehicles or equipment, or to meet federally mandated emissions, safety and fuel economy requirements, or for other reasons, to produce Chevrolet products with different components or differently sourced components than initially scheduled. All such components have been approved for use in Chevrolet products and will provide the quality performance associated with the Chevrolet name.

With respect to factory-installed extra-cost optional equipment, make certain you specify the type of equipment you desire on your vehicle when ordering it from your dealer. Some options may be unavailable when your vehicle is built. Your dealer receives advice regarding current availability of options. You may ask your dealer for this information. GM also requests the dealer to advise you if an option you ordered is unavailable. We suggest that you verify that your vehicle includes the optional equipment you ordered or, if there are any changes, that they are acceptable to you. These vehicles are also available under the GMC nameplate GMC Jimmy Series K1500.

For information on any new Chevy truck. See your Chevy dealer for a complete selection of 1986 truck catalogs. They cover ■ Chevy S-10 Blazer ■ Chevy S-10 Pickup ■ full-size Chevy Pickup ■ Suburban ■ El Camino ■ Sportvan ■ Chevy Van ■ Astro Passenger Van ■ Astro Cargo Van ■ all Medium-Duty Chevys and the ■ Chevy Recreation & Trailering Guide.

**At your Chevy dealer's, financing or leasing your new Blazer can be as easy as saying GMAC.**  
 Let's get it together... buckle up. Every new 1986 full-size Blazer delivered by a Chevrolet dealer in the United States comes with a one-year, \$10,000 safety belt user insurance certificate from MIC General Insurance Corporation at no additional charge. \$10,000 will be paid to the estate of any occupant who suffers fatal injuries as a result of an accident involving that vehicle while wearing a GM safety belt. Buckle up every time you drive.  
 Shown on back cover: Blazer 4x4 Silverado in Frost White. Tires supplied by various manufacturers.

**A word about updated service information.** Chevrolet regularly sends its dealers useful service bulletins about Chevrolet products. Chevrolet monitors product performance in the field. We then prepare bulletins for servicing our products better. Now you can get these bulletins, too. Ask your dealer. To get ordering information, call toll-free 1-800-551-4123.

**A word about engines.** Chevrolet trucks are equipped with engines produced at facilities operated by GM car and truck groups, subsidiaries or affiliated companies worldwide.

**The GM Protection Plan.** An option that offers service protection in addition to that provided by GM's new-vehicle limited warranty. Available only in the U.S. and Canada for the 1986 model year. Ask your dealer about this option.

**A word about assembly, components and optional equipment in these Chevrolet products.** The full-size Chevrolet

As part of the 1986 Chevrolet new-vehicle limited warranty, your Chevy truck includes three-year perforation-from-corrosion coverage. Exhaust system components not included. See your Chevy dealer for details and other limitations.



NOTHING WORKS LIKE A CHEVY TRUCK

