

'75 CHEVY SUBURBAN



LASTING
CHEVY
VALUE

Suburban value: an inside view.

Big on moving people and cargo.

You can move more with each trip. That's why Suburban meets today's driving requirements so perfectly. It does all a wagon can't. And a lot a wagon can't.

Seats up to nine, all facing forward.

There's a full-width bench-type front seat, generously sized for three. A folding second seat is available; room for three more. And a three-passenger removable third seat is available for Suburbans ordered with second seat.

More space inside for luggage.

With only the front seat in position, Suburban can move as much as 144 cu. ft. of cargo.

Well-suited to many types of businesses.

Suburban's big hauling capacity, easy accessibility to cargo space and easy convertibility from people-to-cargo-moving make it especially desirable for service and delivery operations. Standard double rear doors can be swung fully open, past the bumper, for getting up close to loading docks. A wagon-type tailgate also is available.



Silverado.

Suburban's new luxury interior. Includes front seat with full-depth foam cushion, upholstered in a choice of either rich fabric and vinyl or all-vinyl. Deep carpeting underfoot. Simulated wood-grain inserts on door trim

panels together with storage pockets on front door panels. Simulated wood-grain applique on instrument cluster with gauge instrumentation.

Scottsdale.

Good-looking and durable all-vinyl seat trim is standard. Special fabric and vinyl upholstery combination is available. Foam-padded cushions. Color-keyed vinyl-covered rubber floor mat. Full-length insulated headliner. Cigarette lighter.

Custom Deluxe.

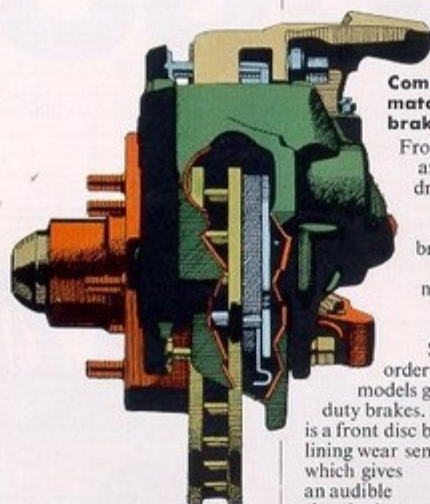
Seats upholstered in hand-some embossed vinyl. Foam-padded. Courtesy lamp located under instrument panel. Cockpit-type instrument cluster, tip-out ashtray and glove compartment, padded sunshades.

High Energy Ignition system.

Standard with all engines, Six or V8, new High Energy Ignition uses a magnetic pulse-generator to eliminate wear-prone breaker points and condenser and increase firing voltage.

Tough steel frame.

Chevy's ladder-type all-steel frame has a drop-center design which allows low body mounting for easy entry and exit. Deep-section channel side rails are strong and durable to withstand hard truck use.



Computer-matched brake systems.

Front disc brakes and finned rear drum brakes are incorporated into complete braking systems computer-matched to the gross vehicle weight of the Suburban you order. Heavier duty models get the heavier duty brakes. Also included is a front disc brake lining wear sensor which gives an audible signal when pads need replacing.

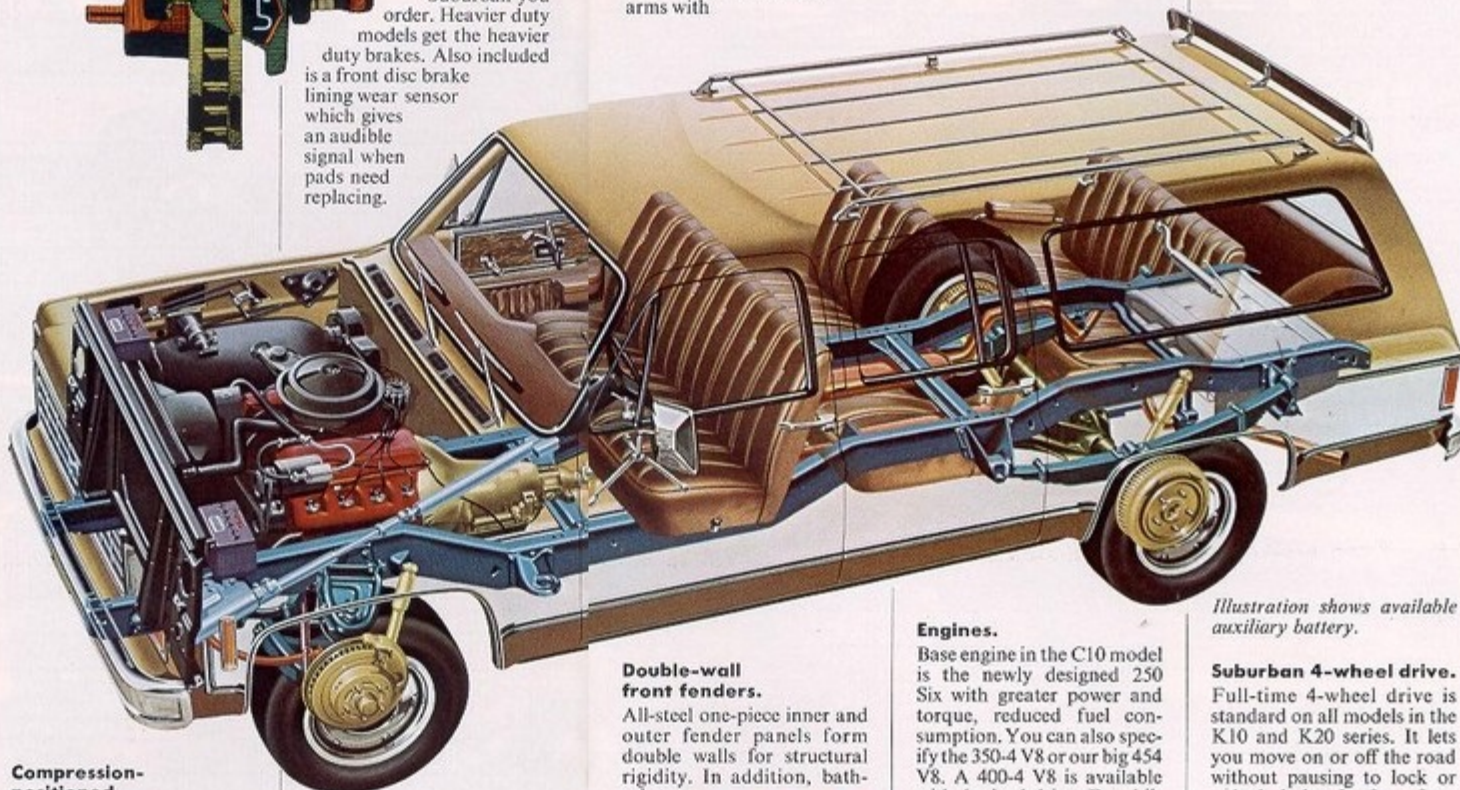


Massive Girder Beam front suspension.

Massive Girder Beam independent front suspension weighing up to 247 lbs. includes at each end two contoured steel control arms with

friction-free coil springs.

Each pair flexes independently up and down, allowing wheels to step individually over the rough spots and help smooth the ride.



Double-wall front fenders.

All-steel one-piece inner and outer fender panels form double walls for structural rigidity. In addition, bathtub-type wheel-housings protect fenders and engine compartment against road splash and flying stones.



Staggered placement of rear shocks.

Rear shocks are positioned with one slanting forward, the other aft to help reduce brake and power hop.

Rear-mounted fuel tank.

Fuel tank is located between the frame rails behind the rear axle. Capacity is 24 gallons. Also available: a 31-gallon tank.

Energy-absorbing steering column.

Column is designed to help absorb energy in the event of severe front-end impact.



Finned rear drum brakes.

Cast iron-steel rear brake drums are finned to promote cooling. Outer edges are curved to help keep contaminants from linings.



Converts quickly from people to cargo.



More cargo space. Second seat easily folds down to make a smooth, flush loading deck almost 40 sq. ft.

Third seat gone. Comfortable seating capacity for six, and 30 sq. ft. for cargo.

All three seats are in place to make room for nine. Folding second seat allows passage to third seat or cargo area from either side.

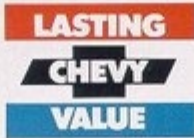
Engines.

Base engine in the C10 model is the newly designed 250 Six with greater power and torque, reduced fuel consumption. You can also specify the 350-4 V8 or our big 454 V8. A 400-4 V8 is available with 4-wheel drive. Durability features include induction-hardened exhaust valve seats, precision-molded head and block castings, free-breathing valve-in-head design, hydraulic valve lifters, and precision-balanced crankshafts.

Illustration shows available auxiliary battery.

Suburban 4-wheel drive.

Full-time 4-wheel drive is standard on all models in the K10 and K20 series. It lets you move on or off the road without pausing to lock or unlock hubs. In fact, free-wheeling front hubs are eliminated. An interaxle differential compensates for variations between front and rear wheels. You get the traction you need for off-road driving, plus stability under varying road conditions.



SPECIFICATIONS

1975 Chevrolet Suburban

Series	C10 (½ Ton)		C20 (¾ Ton)		K10 (½ Ton) 4-Wheel Drive		K20 (¾ Ton) 4-Wheel Drive		
GVW Range (lb)	5400 to 7000		7100 to 8200		6200 to 7300		6800 to 8400		
Availability	Standard	Available	Standard	Available	Standard	Available	Standard	Available	
Engine	Six	*250-1	—	—	—	—	—	—	
	V8	**350-4	454-4	**350-4	454-4	**350-4	400-4	**350-4	
Clutch Dia. (in)	*11, **12		—		**12		—		
Front Suspension	Type	Independent-Coil Springs				Hypoid Driving Axle—Leaf Springs			
	Capacity (lb)	3100	—	3800	—	3600	—	3800	—
	Spring Capacity (lb)	*1550 **1625	1700	1750	1900	1850	1900	1850	1900
	Shock Absorbers	Standard	Heavy-Duty	Standard	Heavy-Duty	Standard	Heavy-Duty	Standard	Heavy-Duty
	Stabilizer Bar	Available				Heavy-Duty	—	Standard	Heavy-Duty
Rear Suspension	Axle Type	Semi-Floating		Full-Floating		Semi-Floating		Full-Floating	
	Capacity (lb)	3750	—	5700	—	4000	—	5700	—
	Ratios	*4.11, **3.40	3.07, 3.40, 3.73, 4.11	3.73	3.21, 4.10, 4.56	3.07	3.73, 4.11	4.10	—
	Springs Type	Two-Stage Multi-Leaf							
	Springs Capacity (lb)	*1550 **2000	—	2000	2600, 2850	2250	—	2800	—
	Shock Absorbers	Standard	Heavy-Duty	Standard	Heavy-Duty	Standard	Heavy-Duty	Standard	Heavy-Duty
Brakes	Front/Rear	Power-Disc/Drum		Power-Disc/Drum		Power-Disc/Drum		Power-Disc/Drum	
Electrical	Battery (amp-hr)	*45, **61	80	61	80	61	80	61	80
	Generator (amp)	37	42, 61	37	42, 61	37	42, 61	37	42, 61
Fuel Tank	Nominal Capacity (gal)	25	31	25	31	25	31	25	31
Steering	Type	Manual	Power	Manual	Power	Manual	Power	Manual	Power
Transmission	Manual	3-Spd.	4-Spd.	4-Spd.	—	3-Spd.	4-Spd.	3-Spd.	4-Spd.
	Automatic	—	Turbo Hyd.	—	Turbo Hyd.	—	Turbo Hyd.	—	Turbo Hyd.
Transfer Case	—		—		N.P. 203 (Full Time)				
Tire Size, Tubeless	G78-15B		8.75-16.5C		H78-15B		8.75-16.5C		

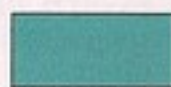
Larger size tubeless and tube-type tires available

*Standard in 6-cylinder models.

**Standard in 8-cylinder models.

Tire load range—B (4PR), C (6PR).

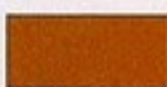
Standard colors



Skyline Blue



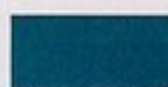
Glenwood Green



Greecian Bronze



Catalina Blue



Hawaiian Blue



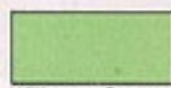
Saratoga Silver



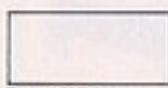
Crimson Red



Rosedale Red



Willow Green



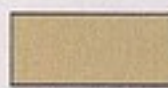
Frost White



Moss Gold



Yuba Gold



Santa Fe Tan



Buckskin



Spring Green

All illustrations and specifications contained in this literature are based on the latest product information available at the time of publication. The right is reserved to make changes at any time in prices, colors, materials, equipment, specifications and models, and also to discontinue models. Limitations and variations in color printing make it impossible to match exactly Chevrolet's available truck exterior paint colors. The representations shown are examples only, and no guarantee of fidelity to actual colors should be inferred. CHEVROLET MOTOR DIVISION OF GENERAL MOTORS CORPORATION, DETROIT, MICHIGAN 48202. LITHO IN U.S.A.

SEPT. 1974

3025

