

1969



Truck Full Line





Series 20 Fleetside

Chevrolet Pickups

**Styled for today . . .
built for many tomorrows**

Keeping pace with contemporary trends has long been an important factor in Chevrolet's ability to maintain a tradition of pacesetter pickups. 1969 is no exception. This year, Chevrolet pickups have captured the trim, modern look with sleek, new front-end styling. Of course, Chevy's famed durability is still built in. Tough, double-strong cab and body construction will keep them

on the job longer . . . as usual. And, as is the Chevrolet custom, a wide choice of styles, models and equipment are offered to meet just about any work or play situation. For example, there are six work-proved engines to choose from. Including an all-new 350-cu.-in. V8 rated at 255 hp. Plenty of transmission selections, too. Drive one today . . . and enjoy it for many tomorrows.

Fleetside Pickup

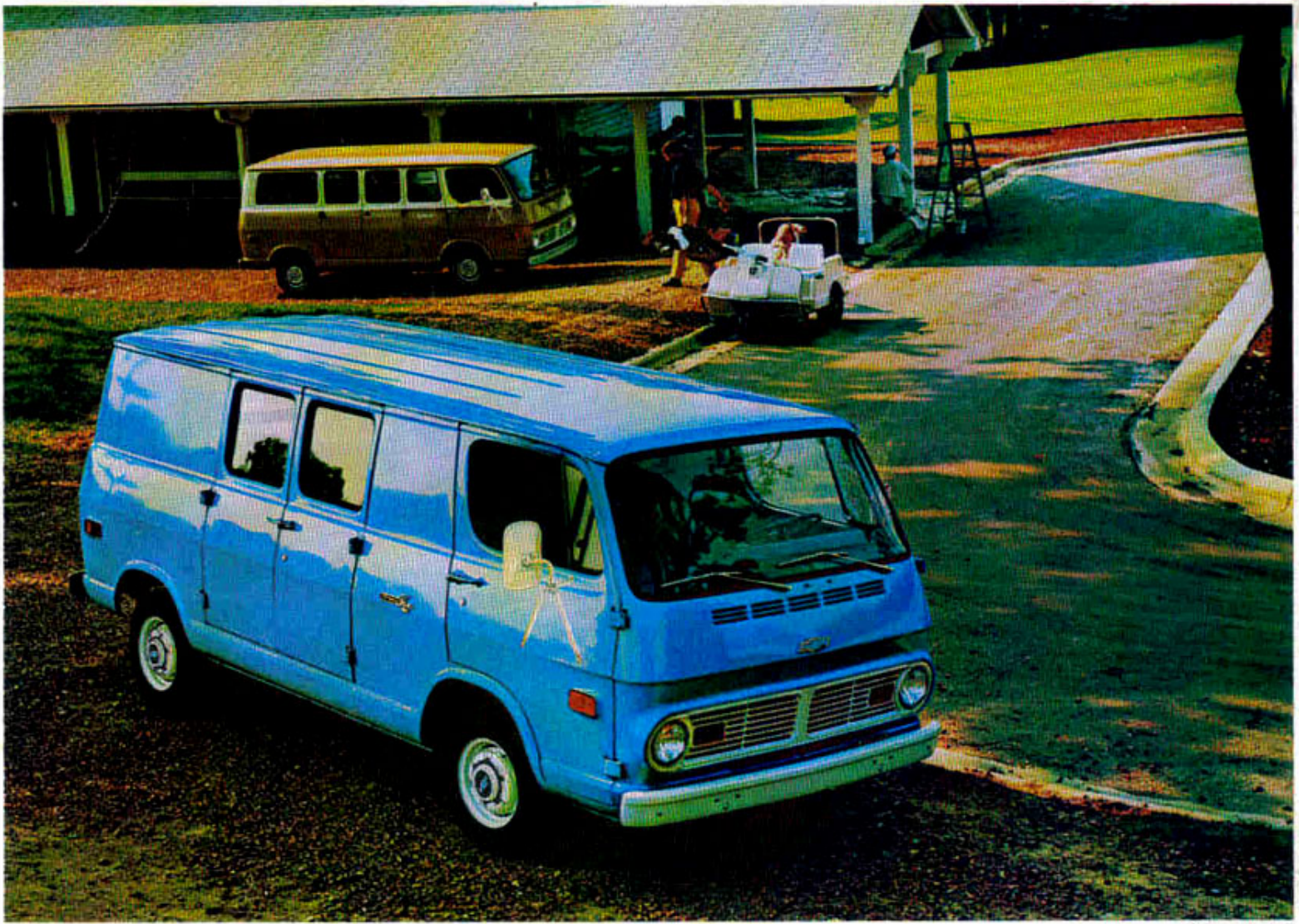
New, bold front-end styling on the outside. New low-profile steering wheel on the inside. And plenty of truck muscle in between. Rugged coil springs at all four wheels provide a road-balanced ride. Double walls in vital areas mean longer service.

Stepside Pickup

6½- or 8-foot box is free of wheel-housings and obstructions. Big 9-foot box is also available on Stepside models. Convenient step on each side of body makes loading and unloading easy. Power train components are same as Fleetside.



Series 10 Stepside



Chevy-Van 108

Nice vans to have around the house . . . or business

Chevy-Vans & Sportvans

Both Chevy-Van and Sportvan offer two lengths, two wheelbases, two capacities and Six or V8 power. The 1/2-ton models offer up to 209 cubic feet of payload space on a 90-inch wheelbase. The 256-cubic-foot body, mounted on a 108-inch wheelbase, can be ordered with either 1/2- or 3/4-ton

chassis components. All models utilize durable tapered leaf springs. And all can be outfitted with several interior arrangements. Whichever model you choose, Chevrolet's stay-tight integral body-frame construction takes all the punishment you can dish out . . . on the job or around the house.

Suburbans & Panels

Two ways to go on one great chassis

Underneath Suburban's station wagon style and comfort lies a rugged truck chassis. Efficient Panel models use that same chassis. And there lies the secret to the durability of these two popular vehicles. Both models use coil springs at all four wheels. And both offer a choice of 1/2- or 3/4-ton units.

Suburban's versatile seating arrangement can be tailored to handle nine people. Or it can be ordered without the optional rear seats and handle more than 181 cu. ft. of payload. Except for seating arrangements and four-wheel drive, Panel models offer the same power train components and accessories as Suburban.



Step-Van 7

Step-Van King

Top door-to-door salesvans

Step-Vans

When it comes to door-to-door service, you can't top the operating efficiency of Chevrolet's Step-Van and Forward Control Chassis models. Body lengths range from 7 or 8 feet for the Step-Van 7 series up to 14½ feet for the one-ton Step-Van Kings. All Step-Vans feature independent coil spring front suspension for

easy rides. A total of six dependable engines are available to meet your particular requirements. Choose from three Sixes, two V8's and the economical 3-cylinder Detroit Diesel. Full walk-in height doors, sliding side doors and double rear doors provide plenty of easy entries and exits. From door to door, it's quite a truck.



Suburban



Panel



Series 50 with van body

Chevrolet's 96" BBC Conventionals

**Designed for short turns...
and long hauls**

Easy maneuverability and excellent load distribution are renowned traits of Chevrolet's 96-inch cab conventionals. The reason is: They can accommodate standard length bodies on wheelbases up to eight inches shorter than most conventional cab trucks. Available with gasoline or diesel power and a broad

selection of power train components, these trucks can handle GCW's up to 60,000 lbs. Maximum GVW on single-axle models is 32,000 lbs. and 45,000 lbs. on tandems. Power choices include Six and V8 gasoline engines rated up to 260 hp plus 2- and 4-cycle diesels.



Series 60 tandem with dump body

Tilt Cabs

Tough on jobs... easy on driver

Chevy's extra-short tilt cab design with setback front axle provides ideal weight distribution, excellent maneuverability, and exceptionally good maintenance accessibility. These 72-inch BBC models are offered with

single or tandem rear axles with GVW ratings up to 32,000 lbs. and 48,000 lbs. GCW ratings go up to 65,000 lbs. Gasoline or diesel power is available. Wide choice of power train components, too.



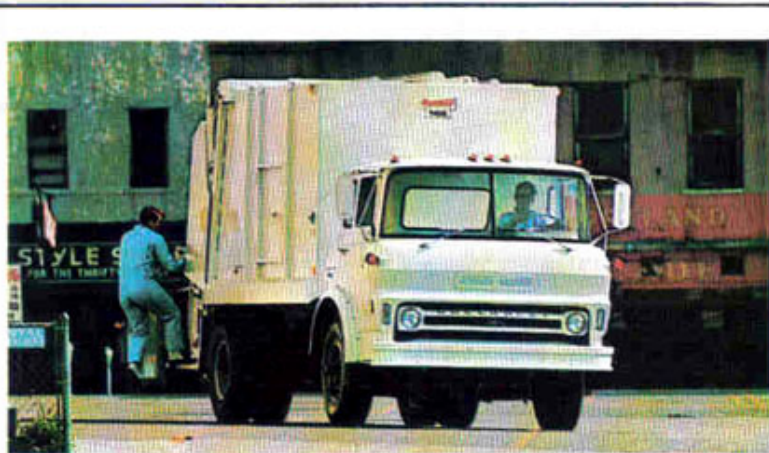
Series 70 diesel tractor

Chevrolet's 93" BBC Heavyweights

Big truck muscles... for big tractor and trailer operations

Those muscular trucks are offered as single-rear-axle models or as dual-drive tandems. 80 Series models are gasoline engine powered; 70 Series diesel. GVW ratings go all the way up to 32,000 lbs. on single-axle

units and up to 48,000 lbs. for tandems. GCW ratings go as high as 65,000 lbs. Transmissions and rear axles are available in a variety of gear ratios to permit each engine to operate at its most efficient speed range.



Series 70 tilt with refuse body



Series 70 diesel with stake body



Series 20 Longhorn

Chevrolet CAMPERS

When the name of the game is outdoor fun... look to the name, Chevrolet

All the qualities that make Chevrolet pickups shine on the job, make them outstanding recreational vehicles, too. In addition, an almost endless list of accessories is available to make any camp-out a fun-in. The list includes everything from stabilizer bars to air conditioning. Included among the many models is the

Chevrolet Longhorn. It's the only pickup built that is designed especially for camping. Available in either ¾- or 1-ton sizes; it offers a longer wheelbase for better weight distribution and handling ease. For those who prefer self-contained units, Sportvans and Step-Vans can be easily converted into family-styled motor homes.

4-WHEEL DRIVE models

Designed to take over where roads leave off

Road or no road, very few areas are off limits with a 4 x 4 chassis. They're available with 6½- and 8-ft. pickup bodies, Suburban bodies and as chassis-cab units. These low-profile models provide high capacity front axles plus tapered leaf

springs for an easy ride over the roughest of terrains. Transfer case is attached to the transmission through an adapter which permits a low vehicle height without sacrificing ground clearance. Try one... they'll go anywhere.



Series 10 4-wheel drive

1969 CHEVROLET TRUCK ENGINES

Series 10-30

IN-LINE SIXES				3-53N Detroit Diesel			
230 Six*		250 Six*		292 Six*			
Gross Horsepower	140 @ 4400	155 @ 4200	170 @ 4000	82 @ 2500			
Net Horsepower	115 @ 3600	125 @ 3800	153 @ 3600	76 @ 2500			
Gross Torque (ft.-lbs.)	220 @ 1600	235 @ 1600	275 @ 1600	193 @ 1500			
Net Torque (ft.-lbs.)	200 @ 1600	220 @ 1600	255 @ 2400	189 @ 1500			
Standard: 10-20 series Chevy-Van and Sportvan, Step-Van 7		Standard: 10-30 series Conventional, 20-40 series Step-Van & Forward Control Chassis and School Bus Optional: 10-20 series Chevy-Van and Sportvan, Step-Van 7		Optional: 10-30 series Conventional, 20-40 series Step-Van & Forward Control Chassis and School Bus		Standard: 20-30 series Step-Van & Forward Control Chassis	
GASOLINE V8's		307 V8**		350 V8**		396 V8**	
Gross Horsepower		200 @ 4600		255 @ 4600		310 @ 4800	
Net Horsepower		150 @ 4000		195 @ 4000		235 @ 4000	
Gross Torque (ft.-lbs.)		300 @ 2400		355 @ 3000		400 @ 3200	
Net Torque (ft.-lbs.)		255 @ 2000		305 @ 2400		345 @ 3000	
		Standard: 10-20 series Chevy-Van and Sportvan, 10-30 series Conventional, 20-30 series Step-Van and Forward Control Chassis		Optional: 10-30 series Conventional, 20-30 series Step-Van and Forward Control Chassis		Optional: 10-30 series Conventional	

*Engine ratings shown are without A.I.R. exhaust emission control system.

**Engine ratings shown are with A.I.R. exhaust emission control system.

Series 40-80

IN-LINE SIX		GASOLINE V8's					
292 Six		350 V8		366 V8		427 V8	
Gross Horsepower	170 @ 4000	200 @ 4000	235 @ 4000	260 @ 4000		225 @ 4000	
Net Horsepower	153 @ 3600	170 @ 4000	200 @ 4000	225 @ 4000		225 @ 4000	
Gross Torque (ft.-lbs.)	275 @ 1600	325 @ 2000	345 @ 2600	405 @ 2600		405 @ 2600	
Net Torque (ft.-lbs.)	255 @ 2400	300 @ 2000	315 @ 2400	365 @ 2400		365 @ 2400	
Standard: 50 series Conventional, Tilt Cab and School Bus		Standard: 50-60 series Conventional, Tilt Cab and School Bus, 50 series Conventional, Tandems		Standard: 60 series Conventional, Tandems Optional: 50 series Conventional, Tilt Cab, School Bus		Optional: 60 series Conventional, Tilt Cab and Tandems	
DETROIT DIESELS		TORO-FLOW DIESEL		GASOLINE V6's			
4-53N		DH478		401 V6		478 V6	
Gross Horsepower	130 @ 2800	165 @ 2800	Gross Horsepower		237 @ 4000	254 @ 3700	
Net Horsepower	120 @ 2800	155 @ 2800	Net Horsepower		210 @ 3700	225 @ 3400	
Gross Torque (ft.-lbs.)	278 @ 1800	337 @ 2000	Gross Torque (ft.-lbs.)		372 @ 1600	442 @ 1400	
Net Torque (ft.-lbs.)	270 @ 1800	325 @ 2000	Net Torque (ft.-lbs.)		348 @ 1600	410 @ 1400	
Standard: 50 series Conventional		Standard: 50 series Conventional		Standard: 80 series Conventional and Tilt Cab		Optional: 80 series Conventional and Tilt Cab	
6V-53N							
Gross Horsepower	195 @ 2600						
Net Horsepower	185 @ 2600						
Gross Torque (ft.-lbs.)	447 @ 1400						
Net Torque (ft.-lbs.)	439 @ 1400						
Standard: 70 series Conventional and Tilt Cab							

El Camino

Engines	230 Six	250 Six	307 V8	350 V8	350 V8	396 V8	396 V8
Gross Horsepower	140 @ 4400	155 @ 4200	200 @ 4600	255 @ 4800	300 @ 4800	325 @ 4800	350 @ 5200
Gross Torque (ft.-lbs.)	220 @ 1600	235 @ 1600	300 @ 2400	365 @ 3200	380 @ 3200	410 @ 3200	415 @ 3400
	Standard	Optional	Standard	Optional	Optional	Optional	Optional

All illustrations and specifications contained in this literature are based on the latest product information available at the time of publication. The right is reserved to make changes at any time in prices, colors, materials, equipment, specifications and models, and also to discontinue models. CHEVROLET MOTOR DIVISION OF GENERAL MOTORS CORPORATION, DETROIT, MICHIGAN 48202. LITHO IN U.S.A.

