



Introducing a lot more  
places you can go:

CHEVROLET

**BLAZER!**



CHEVROLET

BLAZER!

# The first full-track go-anywhere funster!



It's like nothing else on wheels—a car/truck combination with the sure stance and exceptional stability you'd never expect in a vehicle this size. Reason is Blazer's unique wide-track design. Wheels are set wide apart like on a passenger car or full-size truck. Result is a steadier ride off the road, a smoother, easier ride on the highway. It's an exclusive advantage only Blazer in its class can offer.



## FULL POWER, RUGGED CHASSIS

Only Blazer offers a *full* power choice, including a big 350-cu.-in. 255-hp V8. And only Blazer gives you the ruggedness of a 4-wheel drive truck chassis; a heavy gauge steel ladder-type frame to support some of the toughest 4-wheel drive components in the business, all cushioned by an extra-strong suspension system.

## WIDE CHOICE OF OPTIONS

Blazer's built to rough it, but you don't need to! There are plenty of extras available to make your adventures more enjoyable . . . more fun. Choose from such items as power steering, power brakes, Positraction rear axle, bucket seats, radio, heavy-duty springs, removable hard top and many more.



You can order Blazer to seat from one to five people. Single driver's seat is standard. Second front seat and a big three-



man bench-type rear seat are also available. Custom Sport equipment includes foam-padded, deluxe bucket seats up



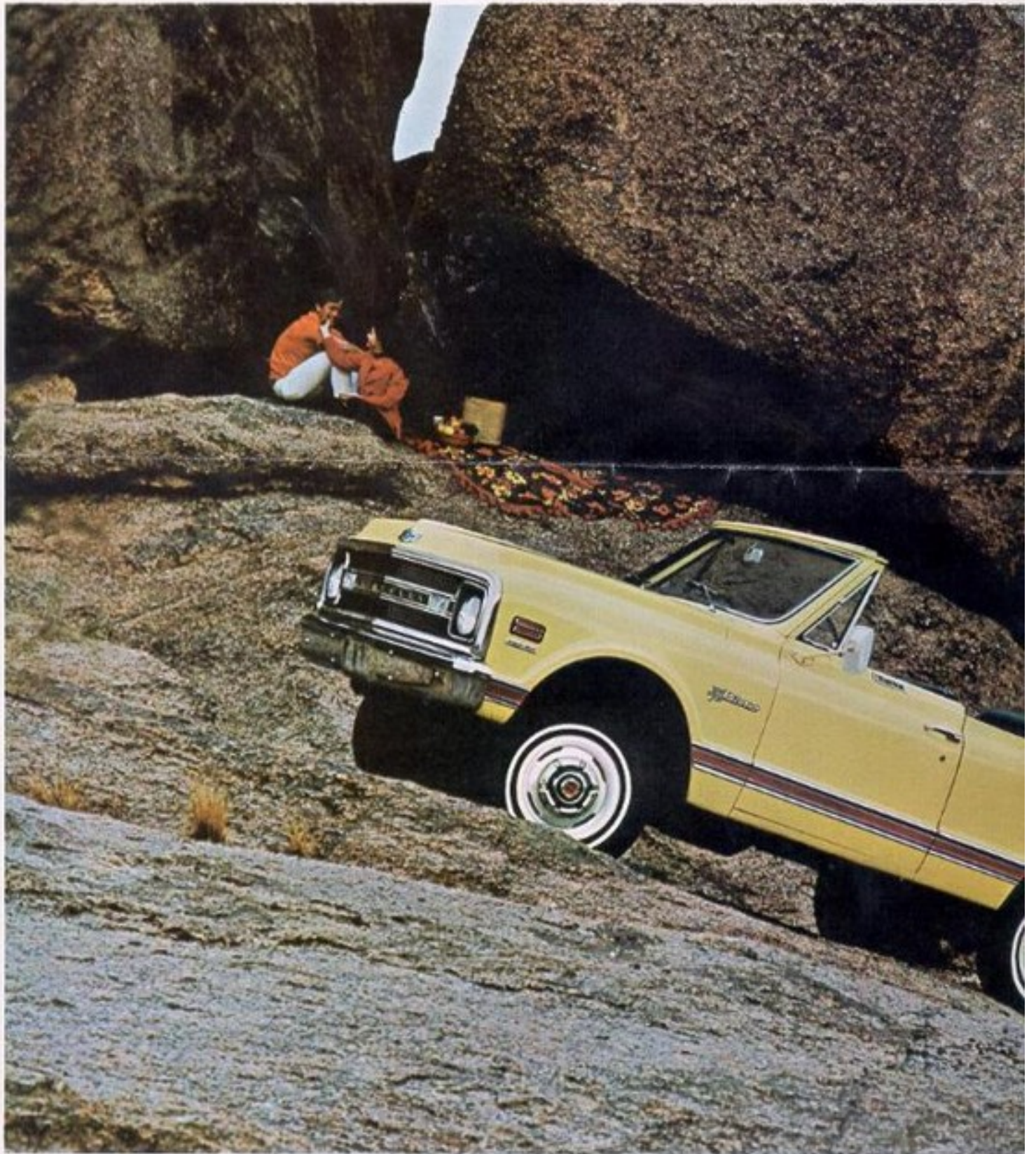
front and deep-embossed vinyl-covered rear bench seat plus many other interior and exterior appearance items.

# BLAZER from CHEVROLET

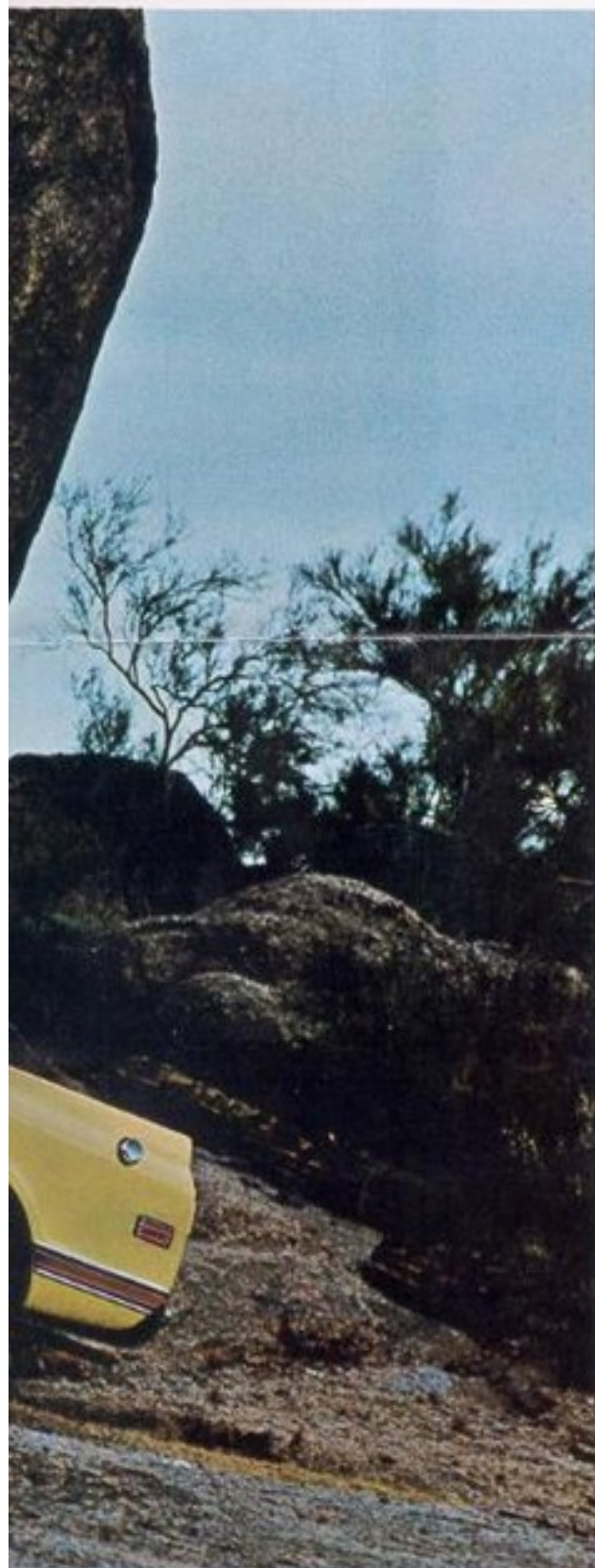
**After you look at its  
hard-working side**



LOOK



# AT THE FUN SIDE



**the most power, room  
and track ever poised on a  
quick, short wheelbase.**



Chevy calls it Blazer. You'll call it the zippiest pickup ever. The handiest second car around. The most fun-packed, go-anywhere vehicle you ever headed up a mountain, tracked through a woods or forded a mountain stream.

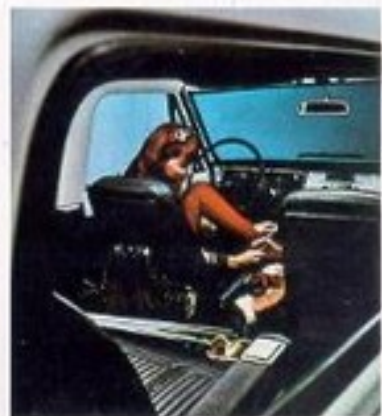
What's Blazer got that the other car-truck combinations haven't? Plenty: Like a wider track—for the surest footing this side of a jungle cat. More room—more cargo space for jobs, more elbow-room for people. And more power than anything else like it — up to 350 cu. in. and 255 hp.

Blazer's rugged 4-wheel drive chassis and body are built with all the stamina and toughness of a Chevy truck. And you do your option picking from the longest list yet, running all the way from a removable fiberglass reinforced hard top to an engine block heater for starts in arctic weather.

If you're itching to go places, so's Blazer. Available soon at your Chevrolet dealer's.

**CHEVY'S NEW**

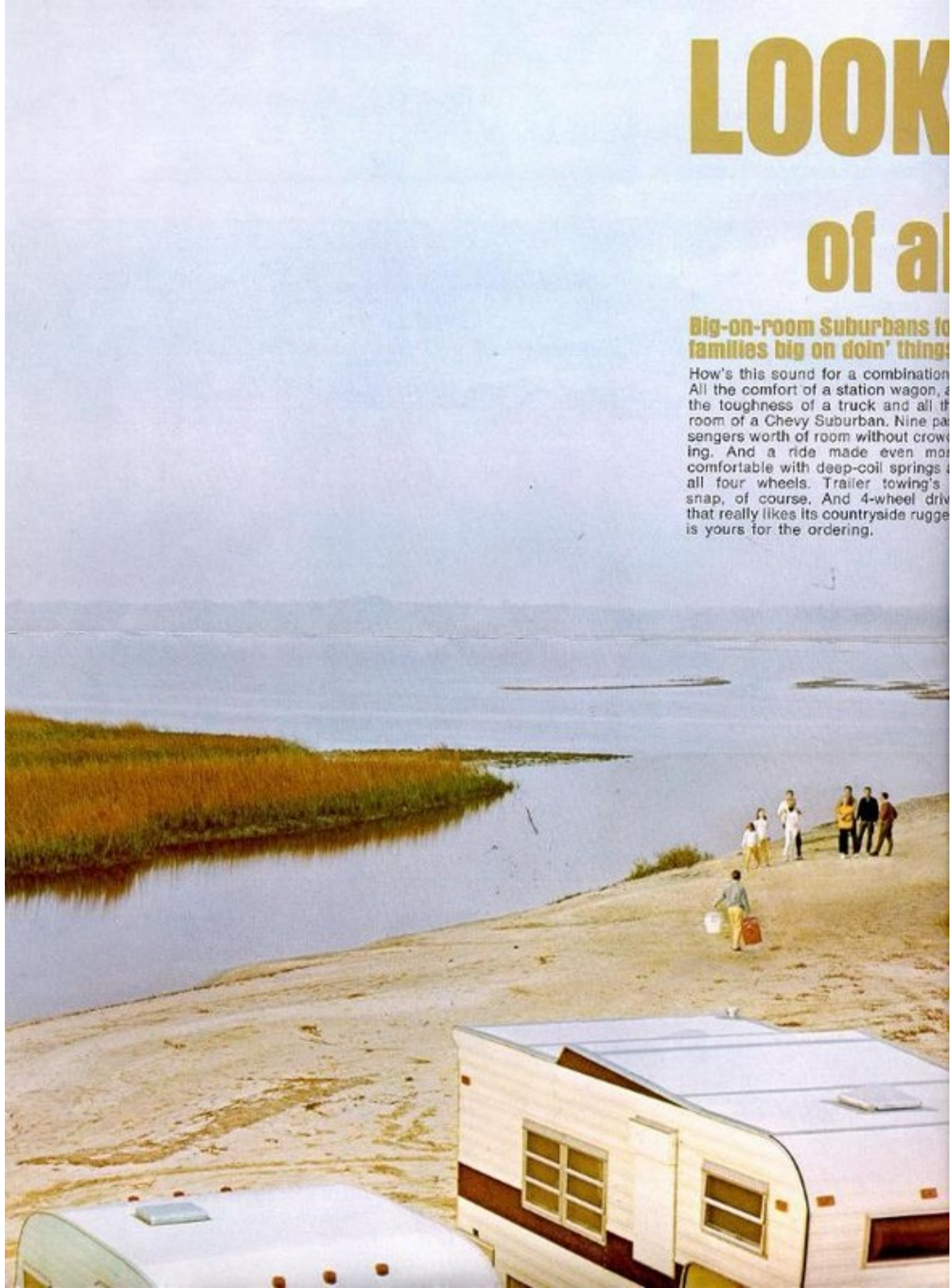
# Blazer



# LOOK of all

## Big-on-room Suburbans for families big on doin' things

How's this sound for a combination of all the comfort of a station wagon, all the toughness of a truck and all the room of a Chevy Suburban. Nine passengers worth of room without crowding. And a ride made even more comfortable with deep-coil springs on all four wheels. Trailer towing's a snap, of course. And 4-wheel drive that really likes its countryside ruggedness is yours for the ordering.



# AT THE FUN SIDE

## And these other Chevies

### **Tough-as-they-come pickups for the easiest going going.**

Things like double-wall strength that make Chevies work-favorites, make them Number One for fun, too. Add the big choice of models and lengths (including Longhorn, first pickup designed for king-sized campers). The choice of Six or V8 engines. The grille to tailgate choice of special camper equipment. And it makes your choice in a camper pickup pretty easy: It's Chevy!

### **Bred-for-work El Caminos that would just as soon be having fun.**

Don't let El Camino's wind-sleek looks fool you. Underneath it all it's truck tough. Ready to move a half-ton of cargo with truck muscle ease. Ready to move you with fine car excitement. Order a 396 V8. Strato bucket seats. You name it. It's El Camino if you're looking for more than a car in your next car. More than a truck in your next truck.

### **The Walk-In Wagon.**

What does "Walk-In" mean? It means that a Chevy 3-seat wagon is easily boarded from *all* doors—including the back door—tailgate. Swing it open and a handy step appears on the bumper. You step up into the wagon and turn around to sit on the rearward facing seat. You can do all this without bumping your head. Once inside, you can enjoy the room and luxury of the Kingswood wagon. One of Chevrolet's biggest and most popular wagons. Walk in one today.







**BE SURE YOU LOOK AT BOTH SIDES OF CHEVY'S NEW 1976 BLAZER**

MAILING LIST SERVICE  
 10000 W. 10TH AVE.  
 DENVER, CO 80202

BULK RATE  
 U.S. POSTAGE  
**PAID**  
 DETROIT, MICH  
 PERMIT NO. 47



**Chevy-Van, Sportvan,  
 Presto! Camper van.**

Chevy-Vans and Sportvans are regular magicians when it comes to converting into campers. Because of their size and yawning door openings, they're naturals. They convert quickly and easily. And best of all, they do it inexpensively. In two family-sizes: 90- and 108-in. wheelbase models.

**Make all your travel  
 arrangements at your  
 Chevrolet Dealer's  
 Sports-Recreation Dept.**

All illustrations and specifications contained in this literature are based on the latest product information available at the time of publication. The right is reserved to make changes at any time in price, color, materials, equipment, specifications and models, and also to discontinue models. CHEVROLET MOTOR DIVISION OF GENERAL MOTORS CORPORATION, DETROIT, MICHIGAN 48202. T.O.M. No. 69-6-May 1969-LITHO IN U.S.A.

