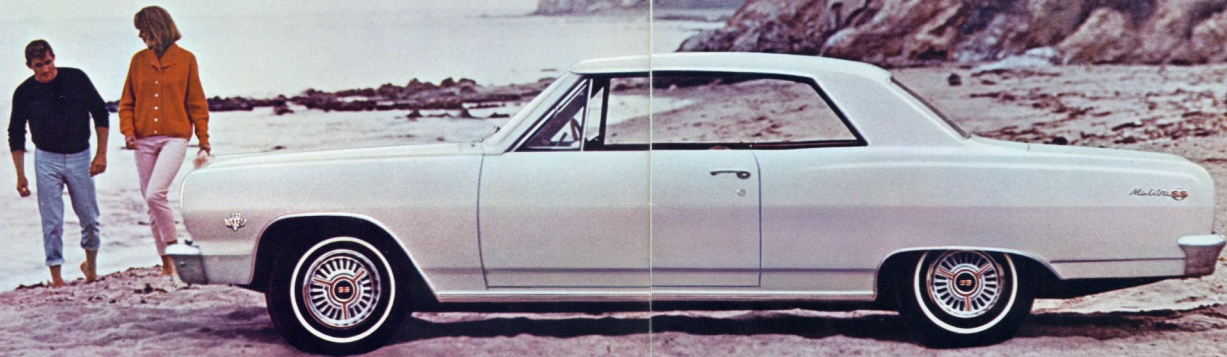


Chevelle/'65

popular-size highway performer



Malibu Super Sport



Shown above: Malibu Super Sport Coupe in Ermine White. / Shown on front cover: Malibu Sport Coupe in Madeira Maroon.

Shown in illustrations in this catalogue are some of the Options and Custom Features available on all 1969 Chevelle models at moderate extra cost. See pages 14 and 16 for detailed listing.

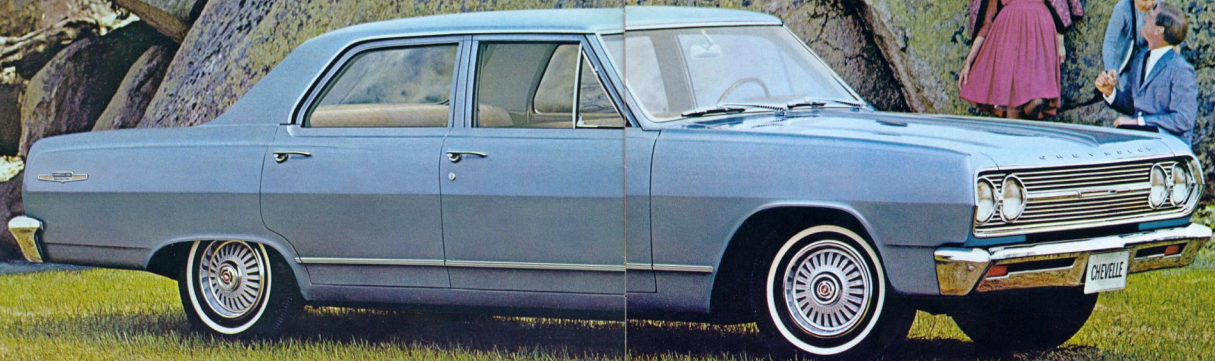
Malibu



Malibu Convertible 2+2 Sierra Trim

Illustrations throughout this catalogue show some of the extra-cost Options and Custom Features available on Chevelles. You'll find a more comprehensive list on pages 14 and 16.

Chevelle 300 Deluxe



Chevelle 300 Deluxe 4-Door Sedan in Mist Blue.

Included in the illustrations in this catalogue are certain of Chevelle's extra-cost Options and Custom Features. You can find a more complete listing on pages 14 and 16.

Chevelle Wagon



Modelo 1969 5-Passenger Station Wagon en Argentina Turminsa

El Club de los amantes de la naturaleza en general y de la pesca y la caza en particular, encontrará en el Chevelle Wagon el compañero ideal para sus aventuras.

Malibu Super Sport

Chevelle! Meet the second great edition of Canada's new popular-size car. Crisp, clean '65 styling makes the Chevelle even more appealing. Look over the Malibu Super Sport Coupe and Super Sport Convertible to see what we mean. The new grille gets a special SS treatment (see page 16) with black color accents. In addition, a black highlight surrounds the new rear cove for another SS hallmark. Restyled body sill moldings add subtle touches. You'll also like the new SS emblem, larger taillamps and restyled wheel covers.

Some things haven't changed a bit, like the 115" wheelbase for easy manoeuvring, curved side glass and loads of interior room. A significant change, though, is the ride. For '65, it's even smoother.

Super Sport interiors let you settle back in foam-cushioned comfort; let you ride up front in luxurious bucket seats. The corduroy-pattern vinyl is new this year, as are the deeply embossed sidewalls. There's floor-wide

carpeting underfoot (with extra-thick underpadding), keyed to six interior colors: red, blue, saddle, black, a new slate and white—with black instrument panel, steering wheel and carpet. You get a sporty console with either the Powerglide automatic or 4-Speed transmission. Finishing touches to SS interior appointments include oil pressure and engine temperature gauges, ammeter and a new electric clock. Front seat belts are standard; deluxe color-matched belts with retractors are available. Choose your favorite Magic-Mirror finish from 15 solid colors including Glacier Gray, Evening Orchid and Crocus Yellow, exclusive to the Super Sports.

A full complement of engines and transmissions satisfies the urge to go. Indulge yourself in luxury by ordering features like Four-Season air conditioning, AM/FM radio with FM stereo and a passel of power assists. Conclusion: *Chevelle's the beautiful shape for '65.*



Malibu Super Sport Coupe in Evening Orchid.



Malibu Super Sport Convertible in Glacier Gray.



Malibu Super Sport Interior in slate.

Malibu

New styling excitement and a pack of luxury features spell even greater popularity for Malibu this year. On all four Malibu models—Sport Coupe, Convertible, 4-Door Sedan and 4-Door 6-Passenger Wagon—new moldings accent front and rear wheel openings. There's a new body side molding as well as bright details around the larger taillamps. Choose from any of 12 Magic-Mirror solid colors for the Malibu, 10 of them brand new for 1965. If you want to two-tone, there are eight to order from. To give the Malibu Sport Coupe or Malibu Super Sport Coupe greater individuality, you can specify an elegant black vinyl roof cover.

Once you open the door to a Malibu, you'll see tasteful luxury. A new diamond-design pattern cloth with vinyl bolster material makes for attrac-

tive, long-wearing seats. (Interiors are all-vinyl in the Malibu Convertible and Station Wagon.) The seats are all comfortably foam-cushioned, the all-vinyl sidewalls echo those in Super Sport. Fawn, red, aqua, blue, and saddle (in Conv. only) interiors are keyed to exterior choices. You'll appreciate Malibu conveniences, too, such as the electric clock, color-keyed steering wheel, ashtrays in the rear and deep-twist carpeting throughout.

As in all '65 Chevilles, every Malibu is loaded with easy-care features like self-adjusting Safety-Master brakes, Delco-tron generator that helps prolong battery life, flush-and-dry rocker panels to combat rust and corrosion. As for engines and transmissions, check the power team chart on page 14 for your personal preference.



Malibu Convertible in Madeira Maroon.



Malibu Sport Coupe in Willow Green.



Malibu 4-Door Sedan in Danube Blue.



Malibu Interior in blue.

Covered in the illustrations and descriptions in this catalogue are some of the extra cost Options and Custom Features for Chevelle. A more complete list appears on pages 14 and 16.

Chevelle 300 Deluxe

A beautiful family-sized series... in 2-Door Sedan, 4-Door Sedan and 4-Door 6-Passenger Station Wagon. With a new color-accented body side molding plus a new grille and front bumper, 300 Deluxe models have good looks sure to last. Inside, combination pattern cloth and vinyl upholstery is available in red, fawn or aqua color-keyed combinations. Check out these extra-value items in Chevelle 300 Deluxe: front and rear armrests, luggage compartment mat and automatic front door dome light switches. Those are only a few. You'll be pleased to find many more to your liking. As for performance, you can specify any engine and transmission combination detailed in the power team chart on page 14.

Chevelle 300

You enjoy the savingest benefits with these Chevelle 300s: 2-Door Sedan, 4-Door Sedan Convertible, and 2-Door 6-Passenger Station Wagon. On the outside, the clean styling is complemented by curved side glass. Tasteful trim includes a wide body sill molding, bright metal ventipane frames, 300 series nameplate and a colorful new emblem on the all-new Chevelle grille. Interiors of durable cloth and vinyl upholstery in fawn only on 2- and 4-Door Sedan (all vinyl in Wagon and Convertible). And check a few of the features that insure comfort and convenience: front armrests, foam-cushioned front seat and four-position ignition switch that allows key removal only when ignition is locked. Wide-opening doors permit easy entry and exit.



Chevelle 300 Deluxe 4-Door Sedan in Tahitian Turquoise.



Chevelle 300 Deluxe 2-Door Sedan in Tuxedo Black.



Chevelle 300 2-Door Sedan in Ermine White.



Chevelle 300 Convertible in Royal Red.



Chevelle 300 Deluxe Interior in aqua.



Chevelle 300 Interior in fawn.

Chevelle Wagons

Three of the handsomest, hardest working Station Wagons you'll see around—the luxurious Malibu 4-Door 6-Passenger, the practical Chevelle 300 Deluxe 4-Door 6-Passenger and the lowest cost Chevelle 300 2-Door 6-Passenger*. No matter which one's your choice, you'll like the way it converts from passengers to cargo—and back in a hurry. Just flip the second seat down in one quick motion. For conversion back to passenger space, flipping back up is just as easy. By any measure, '65 Chevelle Wagons are great haulers—with 86 cubic feet of area when second seat's folded flat. And with the tailgate down, over 9½ feet of load length behind the front seat. Tailgate opening width is 55.3". Malibu and Chevelle

300 Wagons have all-vinyl interiors; Chevelle 300 Deluxe carries the popular cloth-and-vinyl combination. Underfoot: color-keyed carpet backed by extra-thick padding in Malibu, color-keyed vinyl-coated mats in Chevelle 300 Deluxe and thick rubber black floor mats in Chevelle 300.

You can count on long service from all of Chevelle's easy-care features. Like sedans, these wagons ride with remarkable new smoothness, with remarkable new quietness. As for additional niceties, order those you like best from Options and Custom Features that are available. For instance, you might want to fit your wagon with the new trailer wiring harness, Superlift air-adjustable shock absorbers and a chrome luggage roof rack.



Malibu 4-Door 6-Passenger Station Wagon in Mist Blue.



Chevelle 300 Deluxe 4-Door 6-Passenger Station Wagon in Cypress Green.



Chevelle 300 2-Door 6-Passenger Station Wagon in Sierra Tan.

*imported



Spare tire and wheel are concealed in right rear quarter panel.



Malibu Station Wagon Interior in fawn.

Illustrations and descriptions in this catalogue contain certain extra-cost Options and Custom Feature items. More complete listings can be found on pages 14 and 16.

Chevelle Mechanical & Technical Features

Standard Engines (depending on model selected)

120-hp Hi-Thrift 194—Chevelle's thriftiest 6-cylinder engine. New camshaft results in increased valve-train durability and quieter operation. Short-stroke design, 194-cu.-in. displacement team to give high efficiency. Single-barrel carburetor with automatic choke for top fuel economy, 8.5:1 compression ratio, rugged 7-main-bearing crankshaft. Oil-wetted paper-element air cleaner. This standard 6-cylinder engine is available in all Chevelle models.

195-hp Turbo-Fire 283—Chevelle's popular V8 engine combining economy and V8 performance. Short-stroke design and 283-cu.-in. displacement for quick response. Two-barrel carburetor with automatic choke, 9.25:1 compression ratio. Oil-wetted paper-element air cleaner for high efficiency. You can get this standard V8 engine for all Chevilles.

Extra-Cost Optional Engines

140-hp Turbo-Thrift 230—Large-displacement 6-cylinder engine. Short-stroke design, 230-cu.-in. displacement, 8.5:1 compression ratio gives added spark. Automatic choke, durable 7-main-bearing crankshaft. Oil-wetted paper-element air cleaner. You can specify this engine for all Chevilles.

250-hp Turbo-Fire 327—A hefty V8 with real hustle. Short-stroke design with 327-cu.-in. displacement. Four-barrel carburetor with automatic choke, 10.5:1 compression ratio and cylinder heads with improved breathing. Temperature-controlled five-bladed fan for quieter, more efficient cooling. Oil-wetted paper-element air cleaner. New large-diameter single exhaust system. This engine is available for any Chevelle.

300-hp Turbo-Fire 327—A snapper version of the 250-hp V8. Large aluminum four-barrel carburetor permits efficient fuel-air mixture flow. Oil-wetted paper-element air cleaner. Full dual exhaust with large-diameter exhaust pipes for increased breathing. Five-bladed temperature-controlled radiator fan. You can specify this engine with any Chevelle.

Engine Features

Full-pressure lubrication, full-flow oil filter, positive-shift starter. Valve-in-head design with independent operating mechanism for each valve; hydraulic valve lifters; thin-wall, high-strength precision block castings; replaceable-insert main and connecting rod bearings. Wedge-type combustion chambers. Combination vacuum-centrifuge advance, 12-volt electrical system, positive crankcase ventilation.

Chevelle Power Teams

STANDARD ENGINES	3-SPEED	4-SPEED	POWERGLIDE
120-hp Hi-Thrift 194 6-cylinder	●		●
195-hp Turbo-Fire 283 V8	●	●	●
EXTRA-COST OPTIONAL ENGINES			
140-hp Turbo-Thrift 230 6-cylinder	●		●
250-hp Turbo-Fire 327 V8		●	●
300-hp Turbo-Fire 327 V8		●	●

Quality Features For Built-in Worth

Renewed Body by Fisher

Superb quality and careful craftsmanship keep your Chevelle new looking for years. Roof, sides and floor are welded together forming a strong single unit. Rubber body mounts at strategic locations isolate road shock. Front end sheet metal and radiator support panel are also isolated by new rubber mounts. Acoustic insulation and quality sealing are used throughout. Advanced bonding method of installing windshield and rear window contributes to neater appearance and makes an excellent seal. Magic-Mirror finish gives long-lasting beauty.

Sturdy Girder-Guard perimeter frame

An all-steel Girder-Guard frame is the backbone of Chevelle's overall construction. Welded torque-box design gives rigidity and strength without excessive weight. Built-in supporting structures for front and rear suspension.

Full Coil suspension

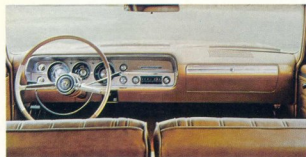
A husky coil spring at each wheel teams with a direct-acting double-action shock absorber for a smooth, level ride. For 1965, front and rear springs have been softened for an even, easy ride. Front stabilizer bar and built-in leveling action give excellent stability. Improved rear suspension isolation through larger upper control arm bushings helps achieve a quieter ride.

Minimum-maintenance features

Chevelle's Delcotron generator helps keep the battery charged even when the engine is running at low speeds. Inner fenders of steel shield and protect outer fenders from rust and corrosion. Self-adjusting Safety-Master brakes eliminate periodic adjustment by taking up normal wear automatically. When the car is braked while backing up, an automatic mechanism makes any necessary adjustment. Large bonded linings contribute to long life and resistance to fade. Long-life exhaust system resists both internal and external corrosion. Rocker panels, flushed by water, dried by air, help to keep corrosive elements from causing rust.

High-output heater

Blended-air heater utilizes outside air from the cowl intake to distribute large volumes of heat to front and rear passengers. Instrument panel controls permit selection of heat range, any of three fan speeds and defroster operation. Blanket-type defroster clears windshield quickly.



Chevelle's restyled instrument panel includes new deeper shrouds for the instruments to eliminate reflections on the windshield. New bright molding, too. In Malibu Super Sport and Malibu models, the new clock sports a second hand that measures off each minute in an easy-to-read manner. More items in Super Sport models: ammeter, engine temperature and oil pressure gauges. And a distinctive color-keyed steering wheel in every '65 Chevelle makes the surroundings seem even more luxurious.

When Malibu Super Sports are ordered with either Powerglide automatic or 4-Speed Synchro-Mesh, you get a sporty bright-metal console between the front bucket seats. It's a plush touch that puts more verve into the appearance. The console sports either a Powerglide shift lever with a bar perched atop to help prevent unintentional shifts into low, reverse or park—or a stout 4-Speed lever redesigned for greater seat clearance. In addition, the 4-Speed's special lever helps prevent unintentional shifts into reverse. Of course, all forward gears of the four-on-the-floor are synchronized for effortless up- and down-shifting. The quiet, reliable 3-Speed Synchro-Mesh rounds out Chevelle's list of transmissions. The choice is up to you. Whichever Chevelle transmission you decide on, you can depend on it to give you years of trouble-free performance.



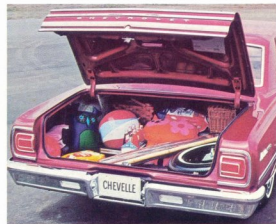
Like a little lift to your spirits? Then you'll want to dress up your Chevelle by ordering wheel covers. There's a full wheel cover as pictured, available for all models except Malibu Super Sports which have their own distinctive wheel covers as standard equipment. If the wire wheel look is your idea of sport, then specify the simulated wires.

Everywhere, there are details that highlight Chevelle's fresh 1965 styling. For example, you're sure to go for Chevelle's new grille, massive deep-section front bumper and new grille emblem shown above.



Brand-new door and window regulators grace every 1965 Chevelle. Padded armrests add to the overall effect of riding comfort and convenience.

Among the aspects of the 1965 Chevelle you'll appreciate most are the quality and durability of interiors. The combination cloth-and-vinyl versions are ruggedly stitched for extra resistance to wear. In the all-vinyl interiors of Super Sports, Malibu Convertible, Malibu and Chevelle 300 Wagons, cleanup is especially easy. Floor-wedged carpeting in Super Sport and Malibu is a deep-wet design, while in Chevelle 300 Deluxe vinyl-coated rubber mats are color-keyed. Chevelle 300 has durable black rubber floor mats all around. You'll find everything about Chevelle interiors nice—the colors, craftsmanship and beauty.



Chevelle's trunk was made to carry ample volumes of luggage. On the go, you'll like the 27.3-cu.-ft. total space that gives you plenty of room for easy loading. In Chevelle 300 Deluxe, Malibu and Malibu Super Sport models, the luggage compartment floor is covered for added protection.

Other Pertinent Chevelle Facts

Body—High-level ventilation through dual vents in front cowl side panels (individual knob controls for each); pushbutton outside door handles; rearview mirror; two front seat belts; enclosed steering column; rheostat-controlled lighted instrument cluster including dial speedometer and fuel gauge, plus oil pressure, engine temperature and generator indicator lights (ammeter, oil pressure and temperature gauges in Malibu Super Sports); four-position ignition switch (Accessory, Off, On, Start); directional signal indicators; ashtray; radio speaker grille (in top of instrument panel); and glove box with lock. Rear deck lid, hood and wagon tailgate are counterbalanced.

Chassis—Clutch: Diaphragm spring type (semi-centrifugal with 327-cu.-in. engines or 4-Speed transmission). Single dry disc, spring cushioned, sealed-in lubricant release bearing. Size and pressure matched to engine. **Wheels and tires:** 14" wheels, 6.95 x 14 black-wall tubular tires, except 7.35 x 14 tires on Station Wagons and all models equipped with 327-cu.-in. engines. **Steering:** Precision Ball-Race gear, overall ratio 28.6:1. **Electrical:** 12-volt system, 9-37 ampere Delcotron generator. (Other Delcotron units of 12-42, 5-55 and 23-42 ampere available.) **Battery:** 53-ampere-hour rating, except 61-ampere-hour with 327-cu.-in. V8 engines.

Dimensions—Wheelbase, 115"; overall length of Station Wagons, 201.4", all other models, 196.6"; height, Sedans, 53.2", Station Wagons, 55.1", Sport Coupes, 52.8", and Convertibles, 52.9"; wheel tread, front and rear, 58.0"; overall width, 74.6".

With Extra-Cost Options and Custom Features Like These, Chevelle's Even Nicer

All-Transistor Radios • For 1965, you can order from four types: manual-tune AM; pushbutton AM; pushbutton AM/FM; and the latter with FM stereo equipment. All radios have instant-play feature and tone control. Rear seat speaker also available.

Extra-Easy Power Steering • Makes parking a breeze and all regular driving almost effortless. Hydraulic unit mounted in the steering column does the work, you supply the direction. Overall power steering ratio is 20.4:1 (28.0:1 regular), resulting in faster steering response.

Positraction • Rear axle gives power to the rear wheel that is sold in traction when the other doesn't. Aids driving in mud, snow, on ice and sand. Normal differential action is not affected.

Soft-Ray Glass • Enjoy cooler driving with Soft-Ray tinted glass. Helps screen out sun's glare, reduces headlight glare at night. Available in the windshield only or in all of the windows.

Cruise Control • Automatic, adjustable speed control. Helps maintain constant turnpike speed with minimum effort. Warns driver against exceeding pre-set speed. Touching brake releases system and allows normal braking control. Available on V8's only.

Comfortilt Steering Wheel • Steering wheel adjusts to any of seven positions to suit the preferences of tall or short drivers. In addition, wheel can be raised easily for more comfortable entry and exit. Especially nice when more than one driver uses the car.

Additional Extra-Cost Equipment—Power-operated folding top for convertibles. Simulated wire wheel covers. Vented wheel covers. Whitewall and special tires. Powerglide automatic, 4-Speed Synchro-Mesh transmissions. 140-hp Turbo-Thrift 230 6-cylinder engine. 327-cu.-in. V8 engines. Windshield-mounted compass. Sweep second hand electric clock. Heavy-duty chassis equipment. Heavy-duty clutch. Superlift air-adjustable shock absorbers. Heavy-duty battery. Heavy-duty radiator. Heavy-duty Delcotron generators. Temperature-controlled radiator fan. Front and rear bumper guards. Sports-style steering wheel. Sintered-metallic

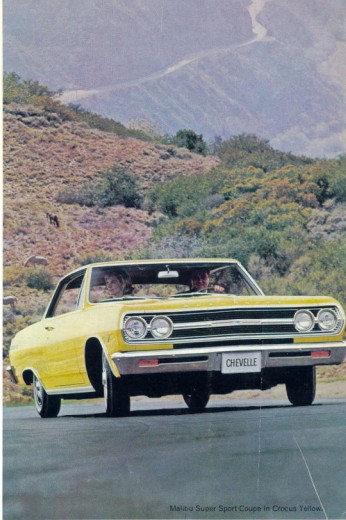
Four-Season Air Conditioning • Climate control is as near as your instrument panel. Chevelle's Four-Season air conditioning utilizes 100% outside air, blend of outside and inside air or 100% inside air. Unit cools, cleans and dehumidifies air for complete comfort. Combined with a blended-air heater, it allows you to select a wide range of coolness or warmth and to control humidity to suit the situation.

Power Windows • Allow driver to control all of the car's main side windows from a panel on his door. Passengers have their own controls for individual operation.

Trailer Wiring • Now a special wiring harness can be fitted to your Chevelle for towing trailers. Wiring eliminates need for drilling holes in car body, minimizes wire splicing and allows easy, convenient plug-in operation of trailer wiring.

Four-Way Power Seat • Chevelle four-way power seat allows drivers to adjust seating position to their individual requirements; especially helpful when more than one person in the family drives. Electric motor moves seat up and down, forward and back at the touch of a control.

Power Brakes • Add a feather touch to stopping with Chevelle power brakes. A large power cylinder reduces braking effort by nearly one-third. Low pedal height aids quick application; big vacuum reserve supplies extra braking power.



Malibu Super Sport Coupe in Crocus Yellow.

brakes. Inside non-glare and outside rearview mirrors, 2-speed electric windshield wipers and pushbutton washer; plus backup lights and glove box light for Chevelle 300 Deluxe and Chevelle 300 models). Luggage rack. Color-matched seat belts with retractors. Black vinyl roof cover. Rear axle rails. Padded instrument panel. Power tailgate window for station wagons.

Check your Chevrolet dealer for a full list of Chevelle Custom Features to meet your individual requirements. Application and availability determined by model and other equipment.