

Chevrolet's
new fleet of
station
wagons

Style and versatility
never before offered
in the low-price
field!



The New NOMAD

Peak of style and grace, its swept-forward windows, grooved top and softly sloping back lend true sportsman's flair to the luxurious Nomad, and at no loss to Chevrolet utility

features. Inspired by the show-car that thrilled millions, its rich fabric interiors and dazzling colors make it the fashion achievement of station wagon styling.



BEL AIR BEAUVILLE

Welcome anywhere, this 4-door combines utility and the rakish dash of the Bel Air series in a sleek city-and-country car. Fabric and vinyl interiors, carefully and colorfully harmonized, make for long-lasting beauty.

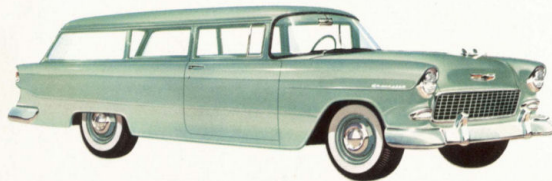
"TWO-TEN" HANDYMAN

Rugged, handsome and big—inside and out. Low, sweeping lines and extra hatroom and hiproom in this big Body by Fisher—yours only on Chevrolet in the low-price field. Interiors—even roof linings—are of tough, washable vinyl.



"TWO-TEN" TOWNSMAN

At home at work and at play—with sports car looks and performance. Look how wide that liftgate opens, and look, too, at the cargo area. Plenty of room for six and baggage—an all-purpose family car the year round.



"ONE-FIFTY" HANDYMAN

Load this 2-door roustabout to the roof and it still looks and drives like the beautiful passenger car it is. That's because Chevrolet engineering has removed that old driver's bugaboo—"station wagon sway." Try it and see!

Whatever your choice in a station wagon — one of these 5 motoramic CHEVROLETS is it!

*Just
Look*

at what CHEVROLET
has done to the

Station Wagon



The station wagons with everything
you want in beauty and engineering!

long, low lines

Sleek, sweeping styling decked out
in glittering color combinations —
the luxury wagons of the
low-price field.

three transmissions

Your choice of new Synchro-
Mesh, advanced Overdrive,
or smoother, silkier
Powerglide.

three new engines

Your choice of the mighty "Turbo-
Fire V8" or two new 6's. Greater
zest and energy for normal
or heavy loads.

visibility unlimited

Sweep-Sight windshields and curved rear-
quarter windows give nearly 360° vision
—there's no usual rear-corner
blind spot.

two- or four-door

Either way you like it, there's extra room —
extra legroom in back. On two-doors,
front seat backs swing way up,
make access easier.

new riding comfort

Low center of gravity, Glide-Ride front
suspension, and outrigger rear springs
bring new stability to station
wagon driving.



*A Winner
going away*

Those annoying rear-corner blind spots are gone, and there's new loading convenience with this re-engineered rear end on all Chevrolets. Lower gate closes against the liftgate, holding it tightly in place. Loading's easier, too—just flip down the tail gate with one hand, load up, flip the gate up, and you're off. Truly a revolution in the rear.

Stealing the thunder from the high-priced cars!

All illustrations and specifications contained in this literature are based on the latest product information available at the time of publication approval. The right is reserved to make changes at any time without notice in prices, colors, materials, equipment, specifications and models, and also to discontinue models.

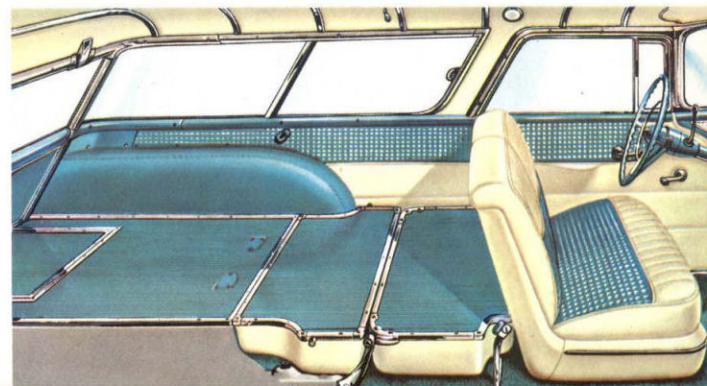
CHEVROLET MOTOR DIVISION, GENERAL MOTORS CORPORATION, DETROIT 2, MICHIGAN

LITHO IN U.S.A.

and look! they're longer and handier inside

**New seat fold gives you nearly
11 inches more load length**

There's more room for everything in the new Motoramic Chevrolet station wagons, thanks to special seat-fold engineering. Load length is increased by nearly 11 inches, because both back seat cushion and backrest fold flush with the floor. There's uninterrupted cargo space between the front seat and the tailgate. Another great Chevrolet station wagon utility feature!



Whatever your choice in a station wagon — one of these 5 *motoramic* CHEVROLETS is it!

brochure specifications

subject: Chevrolet NOMAD - 1955

format: folder: 4 panels

*page size: 9.0"w x 5.6"h
full extension 18.0w x 10.6h*

notes: mid year introduction station wagon brochure



HN
05

150 ppi
resolution

• 1.3 MB
total size

• 4 files
units

*Just
Look*

at what CHEVROLET
has done to the

Station Wagon





Stealing the thunder from the high-priced cars!

*A Winner—
going away*

Those annoying rear-corner blind spots are gone, and there's new loading convenience with this re-engineered rear end on all Chevrolets. Lower gate closes against the liftgate, holding it tightly in place. Loading's easier, too—just flip down the tail gate with one hand, load up, flip the gate up, and you're off. Truly a revolution in the rear.

All illustrations and specifications contained in this literature are based on the latest product information available at the time of publication approval. The right is reserved to make changes at any time without notice in prices, colors, materials, equipment, specifications and models, and also to discontinue models.

CHEVROLET MOTOR DIVISION, GENERAL MOTORS CORPORATION, DETROIT 2, MICHIGAN

LITHO IN U.S.A.

The station wagons with everything you want in beauty and engineering!

long, low lines

Sleek, sweeping styling decked out in glittering color combinations — the luxury wagons of the low-price field.

visibility unlimited

Sweep-Sight windshields and curved rear-quarter windows give nearly 360° vision — there's no usual rear-corner blind spot.

two- or four-door

Either way you like it, there's extra room — extra legroom in back. On two-doors, front seat backs swing way up, make access easier.

three new engines

Your choice of the mighty "Turbo-Fire V8" or two new 6's. Greater zest and energy for normal or heavy loads.

three transmissions

Your choice of new Synchromesh, advanced Overdrive, or smoother, silkier Powerglide.

new riding comfort

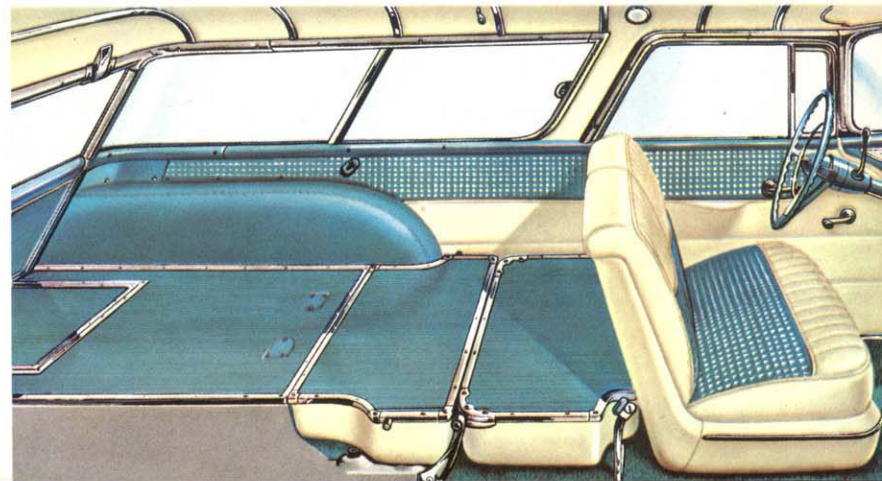
Low center of gravity, Glide-Ride front suspension, and outrigger rear springs bring new stability to station wagon driving.

HN
05

and look! they're longer and handier inside

New seat fold gives you nearly 11 inches more load length

There's more room for everything in the new Motoramic Chevrolet station wagons, thanks to special seat-fold engineering. Load length is increased by nearly 11 inches, because both back seat cushion and backrest fold flush with the floor. There's uninterrupted cargo space between the front seat and the tailgate. Another great Chevrolet station wagon utility feature!



Whatever your choice in a station wagon — one of these 5 *motoramic* CHEVROLETS is it!