

ADVANCE CIRCULAR

THE LITTLE FOUR

The Classiest of All Roadsters
For Two Passengers



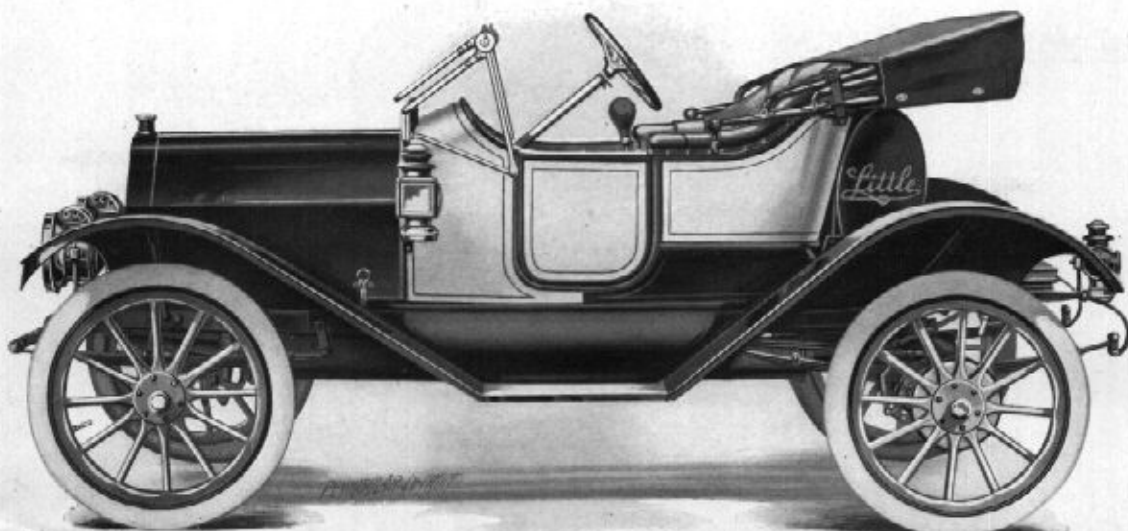
The Car You Want and at a Price
You Can Afford to Pay

"The Product of Experience"

Absolutely Well Built—Easy Riding and Comfortable—So Stylish and
Well Finished that owners of High-priced large cars
are proud to use The LITTLE FOUR
for their runabout work

The Price **\$690.00** Equipped
F. O. B. FLINT, MICH.

THE REPUBLIC MOTOR COMPANY
OF MICHIGAN
DETROIT, MICHIGAN, U. S. A.



The "LITTLE FOUR", fully equipped, **\$690.00**

F. O. B. FLINT

Specifications of The "LITTLE FOUR" Roadster

UNIT POWER PLANT

MOTOR—20 H. P., four cylinders, cast in pairs, L-head, $3\frac{1}{2}$ inch bore, $3\frac{3}{8}$ inch stroke, extra large valves with adjustable push rods. Spark and throttle control levers below steering wheel.

COOLING—Thermo-syphon, with fan.

CARBURETOR—Specially designed for this motor.

IGNITION—High tension magneto, and dry cells for starting.

LUBRICATION—Oiler, bolted solid to right side of crank case, vacuum feed system; bearings and pistons lubricated by splash.

CLUTCH—Cone, large, improved type, with ball thrust and Raybestos facing.

TRANSMISSION—Selective, sliding gear. Two speeds forward and one reverse. Nickered steel gears.

DRIVE—Shaft, through one universal joint.

AXLES—Front, tubular; Rear, semi-floating, with Hyatt roller bearings.

WHEELS—Artillery type; 30 x 3, with Goodyear clincher tires.

WHEEL BASE—90 inches.

TREAD—56 or 60 inches.

BRAKES—Internal and external on rear wheel drums. Service brake operated by foot pedal; emergency brake operated by hand lever.

STEERING GEAR—Rack and pinion.

FRAME—Pressed steel channel.

SPRINGS—Semi-elliptic, front; three-quarter elliptic, rear. Rear springs are extra long to insure easy riding.

BODY—Two-passenger, torpedo type, large and roomy, upholstered with deep buffed leather over plenty of curled hair. Deep cushions with plenty of springs. Floor boards removable and covered with linoleum with nicked binding. Extra large fenders bolted solid to frame.

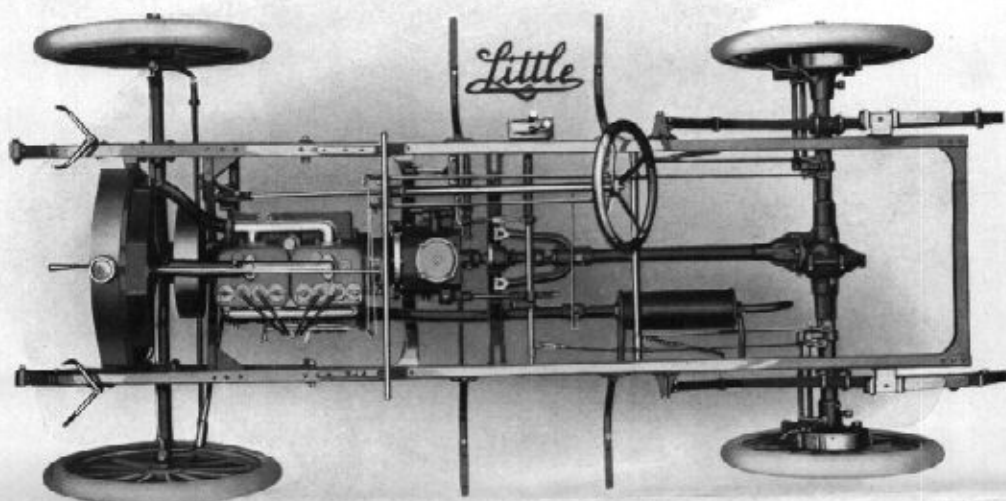
PAINTING—Body, *Little* gray; Chassis, black; finely striped; all sheet metal parts, black.

MOUNTINGS—Full nicked throughout.

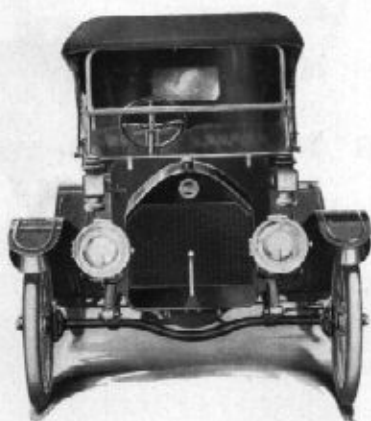
EQUIPMENT—Mohair top, with hood and curtains, windshield, five lamps, Prest-O-Lite tank, horn, auto jack, pump, tire repair kit and tools.

NOTE—Motor has full nicked mountings. NO BRASS TO POLISH.

"The Product of Experience"

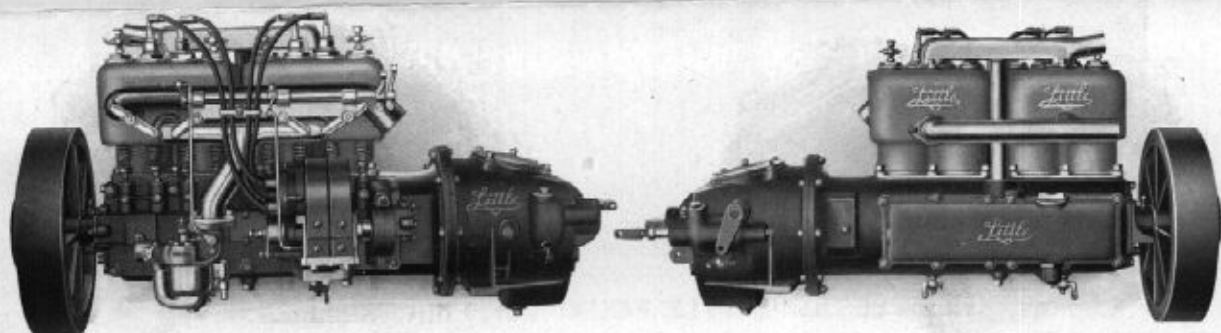


The "LITTLE FOUR" Chassis—Built to Stand Up



COMING EVERYWHERE

There is no simpler car than The "LITTLE FOUR" with its Unit Power Plant and Selective Sliding Transmission



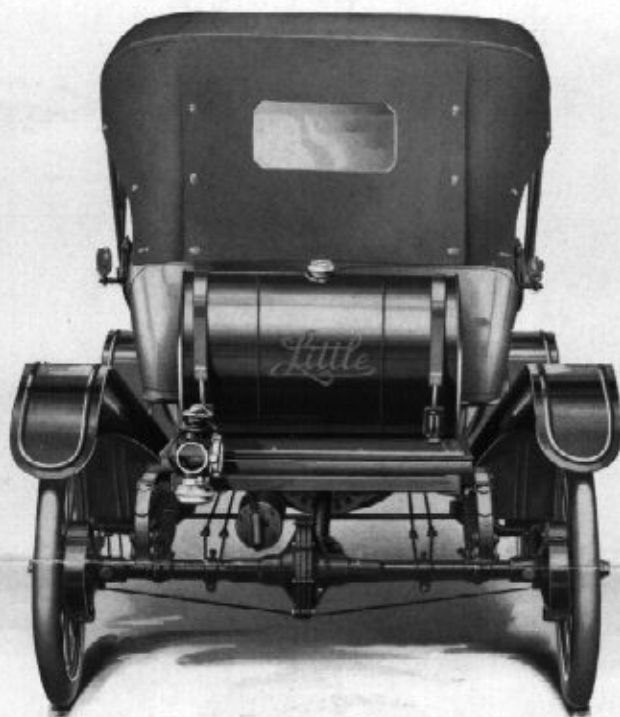
IGNITION SIDE

MOTOR

OILER SIDE

Showing Unit Power Plant

"The Product of Experience"



GOING EVERYWHERE

The "LITTLE FOUR" Roadster Must Be Seen to Be Appreciated



Home of The "LITTLE FOUR" Car, Flint, Michigan

Six and One-half Acres of Actual Factory Floor Space. This Entire Plant is Modern and Well Equipped—Devoted Exclusively to Building LITTLE CARS and Building Them Just Right

THE REPUBLIC MOTOR COMPANY OF MICHIGAN
DETROIT