

2013  
**SONIC**





# *Seven billion people. One road.*

Movement is the universal language of personal freedom. Our founder Louis Chevrolet spoke it fluently. As a Swiss immigrant, he came to America with a dream of racing cars. He wished for everyone – not just the rich or entitled – to experience the exhilaration he felt behind the wheel.

In 1911, he began building his first car. One hundred years later, a new Chevrolet is sold every 6.6 seconds. That amounts to 4.76 million vehicles in more than 140 countries – more than Louis Chevrolet could ever have imagined.

The depth of our heritage and passion is evident in everything we do here at Chevrolet. It's ingrained in the bold design, spirited performance, proven durability and exceptional value our drivers enjoy. It empowers us to be leaders in innovation. And it inspires us to continuously raise the bar – today, tomorrow and into what promises to be a bright future.

Currently, we are pioneering new propulsion technologies to meet the demanding energy and environmental needs of a global automotive brand. We're also employing alternative energy sources and investing in fuel-saving technologies to help reduce our carbon footprint with the goal of reducing 8 million metric tons of carbon dioxide emissions over the next few years.

Our global reach is expanding, yet our mission remains the same. We want every customer to feel like family – no matter where you are in the world. And no matter where you're going, we want you to enjoy the ride in a Chevrolet.

From the vision of one to the journey of many, Chevy Runs Deep.



## THE 2013 CHEVY SONIC

We designed Sonic to be a car for firsts. It's the first and only car in its class to receive a 5-Star Overall Vehicle Score for safety from NHTSA<sup>1</sup> and to offer 10 standard air bags.<sup>2</sup> It's the only car in its class with an available turbocharged engine and the only small car that's built right here in the United States.<sup>3</sup> And after its first year, Sonic was recognized by J.D. Power and Associates as having the "Highest Ranked Vehicle Appeal among Sub-Compact Cars"<sup>4</sup> in the 2012 APEAL Study. This study looked at the exterior styling, seating and storage space, comfort, convenience and other factors. After Sonic's first skydive, bungee jump, kickflip and music video, Sonic is ready to take on your firsts. It was built for people who try new things, seek discovery and live life to the fullest. Sonic is the most fun-to-drive car — and it offers up to 40 MPG highway.<sup>5</sup> Ushering in a world of excitement, Sonic invites everyone to experience life with three words: Let's do this!



Sonic RS shown in Victory Red. Coming Fall 2012.

<sup>1</sup> Government 5-Star Safety Ratings are part of the National Highway Traffic Safety Administration's (NHTSA's) New Car Assessment Program ([www.SaferCar.gov](http://www.SaferCar.gov)). <sup>2</sup> Based on GM Small Car segment. Always use safety belts and the correct restraint for your child's age and size. Even in vehicles equipped with the Passenger Sensing System, children are safer when properly secured in a rear seat in the appropriate infant, child or booster seat. Never place a rear-facing infant restraint in the front seat of any vehicle equipped with a passenger air bag. See the Owner's Manual and the child safety seat instructions for more safety information. <sup>3</sup> Assembled in Lake Orion, MI, of U.S. and globally sourced parts. <sup>4</sup> The Chevrolet Sonic received the highest numerical score among sub-compact cars in the proprietary J.D. Power and Associates 2012 Automotive Performance, Execution and Layout (APEAL) Study.<sup>™</sup> Study based on responses from 74,759 new-vehicle owners, measuring 233 models and measuring opinions after 90 days of ownership. Proprietary study results are based on experiences and perceptions of owners surveyed February–May 2012. Your experiences may vary. Visit [jdpower.com](http://jdpower.com). <sup>5</sup> Based on Sonic LT/LTZ with available 1.4L turbocharged engine and 6-speed manual transmission with EPA-estimated 40 MPG highway.



## RS SPORT STEERING WHEEL

Racing-inspired flat-bottom design

Preproduction interior shown.  
Actual production model may vary.

## THE BEST OF THE BEST

Say hello to the newest Sonic model. Amped up from the inside out, Sonic RS is begging you to hit the road and never look back. The standard turbocharged engine is complemented perfectly by a lowered and stiffened suspension with performance-tuned dampers and a unique sport exhaust. This is the ultimate Sonic driving experience. The Chevrolet MyLink<sup>1</sup> Radio really takes the cool factor to another level. It helps you connect to all the things you love – your phone, your music and your friends, and takes them along for the ride.

Get your adrenaline going as you slide into heated, leather-appointed front bucket seats with sueded microfiber inserts and grab hold of the leather-wrapped sport steering wheel with racing-inspired flat-bottom design. The performance of Sonic is matched by an interior that is upgraded with unique center stack trim and contrasting red stitching throughout. Enhanced from the ground up, RS is an impressive balance of savvy and power.

<sup>1</sup> MyLink functionality varies by model. Full functionality requires compatible Bluetooth and smartphone, and USB connectivity for some devices. MyLink on Sonic does not include functionality such as enhanced voice recognition, Gracenote and CD player.



**RS FRONT SPORT SEATS**

Leather appointments and sueded microfiber inserts

Preproduction interior shown.  
Actual production model may vary.



**RS ALUMINUM SPORT PEDALS**

Race-inspired grips



**RS SPORT SHIFT KNOB**

Red stitching on the shift boot



# HOME SWEET SONIC

JUST BECAUSE YOU'RE ON THE ROAD DOESN'T MEAN YOU SHOULD BE AWAY FROM THE CONVENIENCES OF HOME

Preproduction interior shown.  
Actual production model  
may vary.



## 01 CHEVROLET MYLINK

Available Chevrolet MyLink<sup>1</sup> Radio starts with a 7-inch diagonal color touch-screen that lets you stay connected in style. The touch-screen menu connects you to everything you need. The USB port<sup>2</sup> allows convenient access to the music library stored on your compatible USB device. And Bluetooth<sup>®</sup> wireless technology<sup>3</sup> lets you listen to music from your compatible smartphone, plus make phone calls – all with the touch of a fingertip. When the vehicle is stopped, users can play video and even display personal photo albums onto the screen from their phone.

BringGo<sup>4</sup> recently published a new navigation app for your compatible smartphone. Later in the model year, Chevrolet plans to make software available that will enable Sonic owners to use this navigation app through their vehicle's available Chevrolet MyLink<sup>1</sup> Radio.

Visit [chevy.com](http://chevy.com) to learn more about available Chevrolet MyLink<sup>1</sup> and the latest on BringGo<sup>4</sup>



iPhone is a trademark of Apple Inc., registered in the U.S. and other countries. App Store is a service mark of Apple Inc.

<sup>1</sup> MyLink functionality varies by model. Full functionality requires compatible Bluetooth and smartphone, and USB connectivity for some devices. MyLink on Sonic does not include functionality such as enhanced voice recognition, Gracenote and CD player. <sup>2</sup> Not compatible with all devices. <sup>3</sup> Go to [gm.com/bluetooth](http://gm.com/bluetooth) to find out which phones are compatible with the vehicle. <sup>4</sup> BringGo app must be purchased separately. Requires compatible smartphone. Data plan rates apply. See dealer or call 1-855-4-SUPPORT (1-855-4-787-7678) for more information.



## 01 & 02 BLUETOOTH WIRELESS TECHNOLOGY, AUXILIARY AUDIO INPUT JACK AND USB PORT

Take calls without ever taking your hands off the steering wheel through the connectivity of standard Bluetooth® wireless technology<sup>1</sup> for select phones and steering wheel-mounted controls. Stream your music through Bluetooth audio streaming<sup>1</sup> which is standard on LT, LTZ and RS and available on LS with the Chevrolet MyLink<sup>2</sup> Radio. You can also plug your iPod® or MP3 player into the auxiliary audio input jack, or your USB device<sup>3</sup> into the available USB port<sup>3</sup> for access to your music library.

iPhone is a trademark of Apple Inc., registered in the U.S. and other countries.



## 03 ONSTAR REMOTELINK/MYCHEVROLET MOBILE APPS

Sonic keeps you in the loop with the connectivity of the OnStar RemoteLink™ mobile app.<sup>4</sup> With this app, you can remotely lock or unlock your doors, check vehicle diagnostics or even remotely start your Sonic when equipped with the available remote vehicle starter system.<sup>5</sup> With the myChevrolet mobile app,<sup>6</sup> you'll never get lost in a parking lot with a map reminder. Want to schedule a service appointment? You can do it in a click.

<sup>1</sup> Go to [gm.com/bluetooth](http://gm.com/bluetooth) to find out which phones are compatible with the vehicle. <sup>2</sup> MyLink functionality varies by model. Full functionality requires compatible Bluetooth and smartphone, and USB connectivity for some devices. MyLink on Sonic does not include functionality such as enhanced voice recognition, Gracenote and CD player. <sup>3</sup> Not compatible with all devices. <sup>4</sup> Available on select iPhone, Android and BlackBerry devices. Services vary by phone, vehicle and conditions. Requires active OnStar subscription, which is standard for six months. <sup>5</sup> Requires available 6-speed automatic transmission. <sup>6</sup> Requires iPhone or Android platform.

01



02



## 01 SIRIUSXM SATELLITE RADIO

Tune in to available SiriusXM<sup>1</sup> and hear everything you want, all in one place. You'll get commercial-free music from every genre, live sports play-by-play and the best in talk, news and entertainment — all at the touch of a button. A 3-month trial is included on LT, LTZ and RS models.



## 02 ONSTAR TURN-BY-TURN NAVIGATION

Getting lost will be a thing of the past with Sonic. Having OnStar<sup>®2</sup> Turn-by-Turn Navigation, standard for six months, means you can be connected to an Advisor who will help you get to your destination anytime, day or night. You can even plan ahead with OnStar eNav, which lets you send destinations from MapQuest<sup>®</sup> to your vehicle. OnStar eNav is available at no additional cost to all OnStar subscribers with an active Directions & Connections<sup>®</sup> Plan, which is standard for six months.

<sup>1</sup> If you subscribe after your trial period, subscriptions are continuous until you call SiriusXM to cancel. See SiriusXM Customer Agreement for complete terms at [siriusxm.com](http://siriusxm.com). Other fees and taxes will apply. All fees and programming subject to change. XM satellite service is available only in the 48 contiguous United States and Washington, D.C. <sup>2</sup> Visit [onstar.com](http://onstar.com) for coverage map, details and system limitations. Services vary by model and conditions.





# WHEREVER THE ROAD TAKES YOU



## **0 → 60 WHEN THE ROAD CALLS, YOU ANSWER**

Sonic has the perfect balance of power and efficiency. So whether it's hitting a skate park or the beach, or just merging with traffic, you'll appreciate a car that achieved 0-60 mph in under 8 seconds on the test track! Great performance is just as important as a car that offers 40 MPG highway<sup>2</sup> – which is why Sonic delivers both.

Sonic LTZ Sedan shown in Silver Ice Metallic with available features.

<sup>1</sup> When equipped with available 1.4L turbocharged engine and 6-speed manual transmission. <sup>2</sup> Based on Sonic LT/LTZ with available 1.4L turbocharged engine and 6-speed manual transmission with EPA-estimated 40 MPG highway.



### **THEY SAY ADVENTURE IS JUST OVER THE NEXT HILL**

Sometimes we just need a little help getting over it. Sonic is equipped with Hill Start Assist, which works to keep the brakes engaged on steep inclines while you transition from the brake pedal to the gas pedal, then automatically releases once you press down on the accelerator.

Sonic LTZ Hatchback shown in Inferno Orange Metallic (extra-cost color) with available features.



**PICK YOUR PASSION**

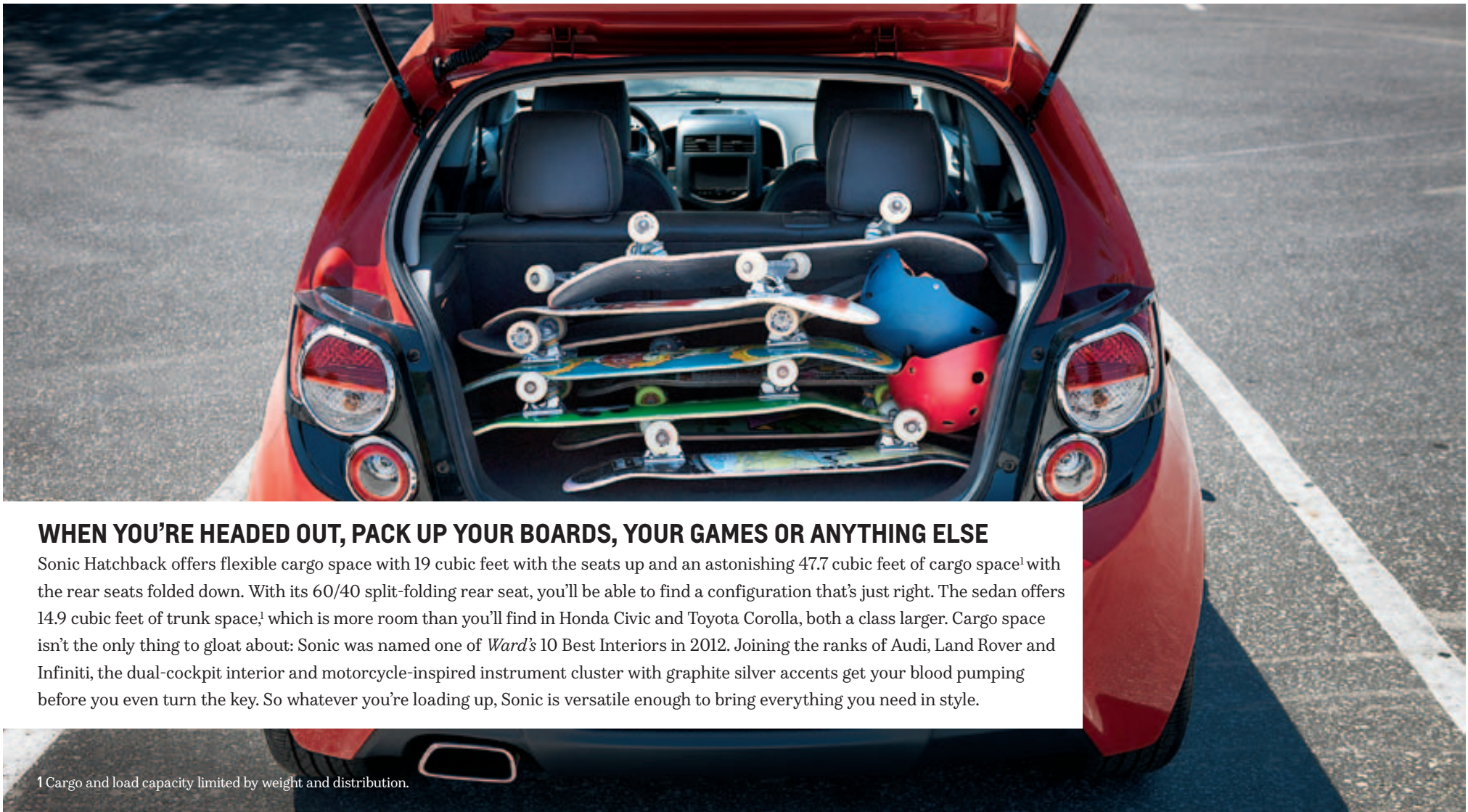
Sonic LTZ Sedan shown in  
Blue Topaz Metallic.

Sonic LTZ Hatchback shown in  
Silver Ice Metallic with available features.

# ROOM FOR EVERYTHING



Sonic RS shown in Victory Red. Coming Fall 2012.



## WHEN YOU'RE HEADED OUT, PACK UP YOUR BOARDS, YOUR GAMES OR ANYTHING ELSE

Sonic Hatchback offers flexible cargo space with 19 cubic feet with the seats up and an astonishing 47.7 cubic feet of cargo space<sup>1</sup> with the rear seats folded down. With its 60/40 split-folding rear seat, you'll be able to find a configuration that's just right. The sedan offers 14.9 cubic feet of trunk space,<sup>1</sup> which is more room than you'll find in Honda Civic and Toyota Corolla, both a class larger. Cargo space isn't the only thing to gloat about: Sonic was named one of *Ward's* 10 Best Interiors in 2012. Joining the ranks of Audi, Land Rover and Infiniti, the dual-cockpit interior and motorcycle-inspired instrument cluster with graphite silver accents get your blood pumping before you even turn the key. So whatever you're loading up, Sonic is versatile enough to bring everything you need in style.

<sup>1</sup> Cargo and load capacity limited by weight and distribution.





Sonic LTZ Sedan shown in  
Blue Topaz Metallic.



# OVERALL VEHICLE SCORE FOR SAFETY<sup>1</sup>



## SAFETY FIRST

Sonic boasts aggressive styling and impressive power, but make no mistake – with Sonic, safety is a priority. Sonic is the first and only car in its class to receive a 5-Star Overall Vehicle Score for safety from NHTSA<sup>1</sup> and was also named a 2012 Top Safety Pick by the Insurance Institute for Highway Safety (IIHS).

<sup>1</sup> Based on GM Small Car segment. Government 5-Star Safety Ratings are part of the National Highway Traffic Safety Administration's (NHTSA's) New Car Assessment Program ([www.SaferCar.gov](http://www.SaferCar.gov)).



Sonic LTZ Hatchback shown in Silver Ice Metallic with available features.



## FIRST IN SAFETY

Sonic is the first and only car in its class with 10 standard air bags.<sup>1</sup> It also has extensive safety features for prevention, reaction and response like 4-wheel antilock brakes and StabiliTrak<sup>®</sup> Electronic Stability Control System with Panic Brake Assist and Electronic Brake Force Distribution to help avoid a collision in the first place.

<sup>1</sup> Based on GM Small Car segment. Always use safety belts and the correct restraint for your child's age and size. Even in vehicles equipped with the Passenger Sensing System, children are safer when properly secured in a rear seat in the appropriate infant, child or booster seat. Never place a rear-facing infant restraint in the front seat of any vehicle equipped with a passenger air bag. See the Owner's Manual and the child safety seat instructions for more safety information. <sup>2</sup> Visit [onstar.com](http://onstar.com) for coverage map, details and system limitations. Services vary by model and conditions. OnStar acts as a link to existing emergency service providers.



## SELF PROTECTION

Sonic comes ready to defend itself against would-be intruders with an engine immobilizer that will stop them in their tracks. Using GPS, an OnStar Advisor can pinpoint the exact location of the vehicle and relay the information to authorities. OnStar<sup>2</sup> Stolen Vehicle Assistance comes standard for the first six months.



## ONSTAR

In many collisions, crash data can be sent to OnStar via Automatic Crash Response.<sup>2</sup> Trained Advisors utilize GPS technology to pinpoint your exact location and can request that emergency help be sent right away – even if you're unable to respond. It's part of the OnStar Directions & Connections Plan, standard for six months.





# MAKE IT YOURS



## YOUR CAR IS AN EXPRESSION OF WHO YOU ARE, AND SONIC IS HERE TO CELEBRATE YOU

Customize your Sonic to fit your life, your style and your personality with genuine Chevrolet Accessories. Choose from a variety of available dealer-installed graphics,<sup>1</sup> white or black wheels, door sill plates, or even sport pedal covers, and put some style down where you put your foot down.

<sup>1</sup> Shown with optional graphics from an independent supplier, which are not covered by the GM New Vehicle Limited Warranty. GM is not responsible for the safety or quality of third-party supplier alterations. Go to [chevroletgraphics.com](http://chevroletgraphics.com) for more details. <sup>2</sup> Late availability.

Sonic LTZ Hatchback shown in Silver Ice Metallic with dealer-installed white wheels, graphics and preproduction body kit.<sup>2</sup>





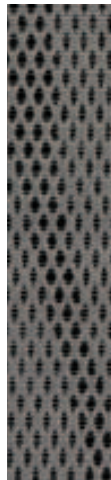
Jet Black/Dark Titanium-Color  
Sport Cloth (LS)



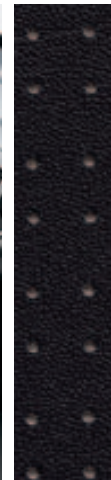
Jet Black/Dark Titanium-Color  
Deluxe Cloth (LT)



Jet Black/Brick  
Deluxe Cloth (LT)



Dark Pewter-Color/Dark Titanium-Color  
Deluxe Cloth (LT)



Jet Black/Dark Titanium-Color  
Perforated Leatherette  
Seating Surfaces (LTZ)



Jet Black/Brick  
Perforated Leatherette  
Seating Surfaces (LTZ)



Dark Pewter-Color/Dark Titanium-Color  
Perforated Leatherette  
Seating Surfaces (LTZ)



Jet Black Leather-Appointed Seats  
with Sueded Microfiber Inserts (RS)



Black Granite Metallic<sup>1</sup>



Blue Topaz Metallic<sup>2,3</sup>



Crystal Red Tintcoat<sup>1,2,3</sup>



Victory Red<sup>3</sup>



Inferno Orange Metallic<sup>1,2,3</sup>



Cyber Gray Metallic



Silver Ice Metallic<sup>2</sup>



Summit White



15" Steel Wheel with Bolt-On Wheel Covers (standard on LS)



15" Painted-Aluminum Wheel (standard on LT)



16" Painted-Aluminum Wheel (available on LT<sup>4</sup>)



17" Painted-Aluminum Wheel (standard on LTZ)



17" Midnight Silver-Painted Aluminum Wheel (standard on RS)

<sup>1</sup> Extra-cost color. <sup>2</sup> Not available on RS. <sup>3</sup> Not available with Jet Black/Brick interior. <sup>4</sup> Requires ECOTEC 1.8L 4-cylinder engine and Wheels and Foglamp Package.

# SELECT VEHICLE FEATURES

## SONIC LS (HATCHBACK AND SEDAN)



ECOTEC® 1.8L 4-cylinder engine with 5-speed manual transmission

Manual-adjustable, body-color, manual-folding mirrors with integrated blind spot mirrors

Upper and lower glove boxes

Power door locks with Remote Keyless Entry

StabiliTrak Electronic Stability Control System with Traction Control and Panic Brake Assist

Bluetooth® wireless technology<sup>1</sup> for select phones

Steering wheel-mounted controls for audio and phone

10 standard air bags<sup>2</sup>

4-wheel antilock front disc/rear drum brakes

Hill Start Assist

Theft-deterrent system with content-theft alarm and engine immobilizer

Single-zone manual climate control



## SONIC LT (HATCHBACK AND SEDAN)



*In addition to or replacing LS features, LT includes:*

Cruise control with steering wheel-mounted controls

AM/FM stereo with CD player and MP3 playback, seek-scan, digital clock, auxiliary audio input jack, RDS<sup>3</sup>, USB port<sup>4</sup> and Bluetooth audio streaming<sup>1</sup>

SiriusXM Satellite Radio<sup>5</sup> with 3-month trial

6-speaker premium sound system

15" painted-aluminum wheels

Power windows with driver express-up/-down feature

Heated power-adjustable, body-color, manual-folding mirrors with integrated blind spot mirrors

Available remote vehicle starter system<sup>6</sup>



<sup>1</sup> Go to [gm.com/bluetooth](http://gm.com/bluetooth) to find out which phones are compatible with the vehicle. <sup>2</sup> Always use safety belts and the correct restraint for your child's age and size. Even in vehicles equipped with the Passenger Sensing System, children are safer when properly secured in a rear seat in the appropriate infant, child or booster seat. Never place a rear-facing infant restraint in the front seat of any vehicle equipped with a passenger air bag. See the Owner's Manual and the child safety seat instructions for more safety information. <sup>3</sup> RDS functions only where stations broadcast RDS information. <sup>4</sup> Not compatible with all devices. <sup>5</sup> If you subscribe after your trial period, subscriptions are continuous until you call SiriusXM to cancel. See SiriusXM Customer Agreement for complete terms at [siriusxm.com](http://siriusxm.com). Other fees and taxes will apply. All fees and programming subject to change. XM satellite service is available only in the 48 contiguous United States and Washington, D.C. <sup>6</sup> Requires available 6-speed automatic transmission.

# SELECT VEHICLE FEATURES

## SONIC LTZ (HATCHBACK AND SEDAN)



*In addition to or replacing LT features, LTZ includes:*

---

Perforated leatherette seating surfaces with heated front seats

---

17" painted-aluminum wheels

---

Chevrolet MyLink<sup>1</sup> Radio: 7-inch diagonal color touch-screen, AM/FM stereo with seek-scan and digital clock, includes USB port,<sup>2</sup> Bluetooth audio streaming<sup>3</sup> for select phones, and smartphone app integration with Pandora<sup>®</sup> Internet Radio and Stitcher SmartRadio<sup>™4</sup>

---

Foglamps

---

3-spoke leather-wrapped steering wheel

---

Rear spoiler (Sedan only)

---



## SONIC RS (HATCHBACK)



*In addition to or replacing LTZ features, RS includes:*

---

ECOTEC<sup>®</sup> 1.4L turbocharged 4-cylinder engine

---

6-speed manual transmission with performance-oriented gear ratios

---

17" Midnight Silver-painted aluminum wheels

---

RS-specific front fascia with unique foglamp design

---

3-spoke sport steering wheel with racing-inspired flat-bottom design

---

RS-specific shift knob

---

Aluminum sport pedals

---

Leather-appointed seats with sueded microfiber inserts

---

Sport exhaust with chrome outlet

---

4-wheel antilock disc brakes

---

Lowered and stiffened suspension with performance-tuned dampers

---



<sup>1</sup> MyLink functionality varies by model. Full functionality requires compatible Bluetooth and smartphone, and USB connectivity for some devices. MyLink on Sonic does not include functionality such as enhanced voice recognition, Gracenote and CD player. <sup>2</sup> Not compatible with all devices. <sup>3</sup> Go to [gm.com/bluetooth](http://gm.com/bluetooth) to find out which phones are compatible with the vehicle. <sup>4</sup> Data plan rates apply.

# SPECIFICATIONS

■ STANDARD □ AVAILABLE – NOT AVAILABLE

	LS	LT	LTZ	RS <sup>1</sup>
<b>EXTERIOR</b>				
Door handles: Body-color	■	■	–	■
Body-color with chrome strip	–	–	■	–
Foglamps	–	□ <sup>2</sup>	■	■
Mirrors: Manual-adjustable, body-color, manual-folding	■	–	–	–
Heated power-adjustable, body-color, manual-folding	–	■	■	–
Heated power-adjustable, Black Granite Metallic-color, manual-folding	–	–	–	■
Integrated blind spot mirrors	■	■	■	■
Moldings: Black beltline	■	–	–	–
Chrome beltline	–	■	■	■
Spoiler: Rear, integrated decklid (Sedan)	–	□ <sup>2</sup>	■	–
Rear, roof-mounted (Hatchback)	■	■	■	■
<b>Wheels and Foglamp Package:</b> 16" painted-aluminum wheels, foglamps (includes rear spoiler on Sedan)	–	□ <sup>3</sup>	–	–
<b>ENGINES/CHASSIS</b>				
Engine: ECOTEC 1.8L 4-cylinder with Variable Valve Timing, 138 horsepower and 125 lb.-ft. of torque	■	■	■	–
ECOTEC 1.4L turbocharged 4-cylinder with Variable Valve Timing, 138 horsepower and 148 lb.-ft. of torque	–	□ <sup>4</sup>	□ <sup>4</sup>	■
Suspension: Touring	■	■	■	–
Sport	–	–	–	■
Transmission: 5-speed manual	■	■	■	–
6-speed automatic with thumb-controlled gear selection on the shifter	□	□	□	□
6-speed manual <sup>5</sup>	–	□	□	–
6-speed manual, RS-specific gearset	–	–	–	■
<b>SAFETY &amp; SECURITY</b>				
Air bags: <sup>6</sup> 10 total; driver and front passenger frontal, includes Passenger Sensing System; front and rear seat-mounted side-impact; roof rail-mounted head-curtain for front and rear outboard seating positions; driver and front passenger knee	■	■	■	■
Brakes: 4-wheel antilock front disc/rear drum	■	■	■	–
4-wheel antilock front/rear disc	–	–	–	■
Hill Start Assist	■	■	■	■
OnStar <sup>7</sup> with Directions & Connections Plan for the first six months	■	■	■	■
StabiliTrak Electronic Stability Control System with Traction Control and Panic Brake Assist	■	■	■	■
Tire Pressure Monitor <sup>8</sup>	■	■	■	■

	LS	LT	LTZ	RS <sup>1</sup>
<b>INTERIOR</b>				
Climate control: Single-zone manual	■	■	■	■
Cruise control	–	■	■	■
Driver Information Center: Trip odometer, fuel range, average fuel economy, average vehicle speed, Tire Pressure Monitor <sup>8</sup> and Oil-Life Monitor	■	■	■	■
Power door locks	■	■	■	■
Remote vehicle starter system <sup>9</sup>	–	□	□	□
Remote Keyless Entry	■	■	■	■
Steering column: Tilt and telescopic	■	■	■	■
Steering wheel: 3-spoke	■	■	–	–
3-spoke leather-wrapped	–	–	■	–
Sport, 3-spoke leather-wrapped with contrasting stitching and racing-inspired flat-bottom design	–	–	–	■
Sunroof: Power, tilt/sliding with express-open and wind deflector	–	–	□	□
Windows: Manual	■	–	–	–
Power with driver express-up/-down with anti-pinch feature	–	■	■	■
<b>SEATING</b>				
Front buckets with height-adjustable head restraints, driver seat armrest, driver 6-way manual adjuster, front-passenger 4-way manual adjuster and 60/40 split-folding rear seat with outboard height-adjustable head restraints	■	■	■	■
Heated seats: Driver and front passenger	–	–	■	■
Seat trim: Sport Cloth	■	–	–	–
Deluxe Cloth	–	■	–	–
Perforated leatherette	–	–	■	–
Leather-appointed with sueded microfiber inserts	–	–	–	■

	LS	LT	LTZ	RS <sup>1</sup>
<b>AUDIO SYSTEMS</b>				
AM/FM stereo with equalizer, auxiliary audio input jack and four speakers	■	–	–	–
AM/FM stereo with CD player and MP3 playback, seek-scan, digital clock, auxiliary audio input jack, Radio Data System (RDS), <sup>10</sup> USB port <sup>11</sup> and Bluetooth <sup>®</sup> audio streaming <sup>12</sup>	–	■	–	–
Bluetooth wireless technology <sup>12</sup> for select phones	■	■	■	■
Chevrolet MyLink <sup>13</sup> Radio: 7-inch diagonal color touch-screen, AM/FM stereo with seek-scan and digital clock, includes Bluetooth audio streaming <sup>12</sup> for select phones and smartphone app integration with Pandora <sup>®</sup> Internet Radio and Stitcher SmartRadio <sup>™14</sup>	□	□	■	■
Premium 6-speaker sound system	□ <sup>15</sup>	■	■	■
SiriusXM Satellite Radio <sup>16</sup> with 3-month trial	□ <sup>15</sup>	■	■	■
Steering wheel-mounted audio controls	■	■	■	■
<b>WHEELS</b>				
15" steel with bolt-on wheel covers	■	–	–	–
15" painted-aluminum	–	■	–	–
16" painted-aluminum	–	□ <sup>2</sup>	–	–
17" painted-aluminum	–	–	■	–
17" Midnight Silver-painted aluminum	–	–	–	■
Compact spare tire	■	■ <sup>17</sup>	■	■
Tire sealant and inflator kit	–	□ <sup>18</sup>	–	–

**1** Hatchback only. **2** Requires available Wheels and Foglamp Package. **3** Requires ECOTEC 1.8L 4-cylinder engine. **4** Requires available 6-speed manual or automatic transmission. **5** Requires available ECOTEC 1.4L turbocharged 4-cylinder engine. **6** Always use safety belts and the correct restraint for your child's age and size. Even in vehicles equipped with the Passenger Sensing System, children are safer when properly secured in a rear seat in the appropriate infant, child or booster seat. Never place a rear-facing infant restraint in the front seat of any vehicle equipped with a passenger air bag. See the Owner's Manual and the child safety seat instructions for more safety information. **7** Visit onstar.com for coverage map, details and system limitations. Services vary by model and conditions. **8** Excludes spare tire when equipped. **9** Requires available 6-speed automatic transmission. **10** RDS functions only where stations broadcast RDS information. **11** Not compatible with all devices. **12** Go to gm.com/bluetooth to find out which phones are compatible with the vehicle. **13** MyLink functionality varies by model. Full functionality requires compatible Bluetooth and smartphone, and USB connectivity for some devices. MyLink on Sonic does not include functionality such as enhanced voice recognition, Gracenote and CD player. **14** Data plan rates apply. **15** Requires available Chevrolet MyLink Radio. **16** If you subscribe after your trial period, subscriptions are continuous until you call SiriusXM to cancel. See SiriusXM Customer Agreement for complete terms at siriusxm.com. Other fees and taxes will apply. All fees and programming subject to change. XM satellite service is available only in the 48 contiguous United States and Washington, D.C. **17** Not available with ECOTEC 1.4L turbocharged 4-cylinder engine and 6-speed manual transmission on Sonic LT Sedan models. **18** Requires available ECOTEC 1.4L turbocharged 4-cylinder engine and 6-speed manual transmission on Sonic LT Sedan models.

# MAXIMUM CAPACITIES

## EPA-ESTIMATED FUEL ECONOMY

ECOTEC 1.8L 4-cylinder engine (LS/LT/LTZ) with 5-speed manual transmission	26 MPG city/35 highway/30 combined
ECOTEC 1.8L 4-cylinder engine (LS/LT/LTZ) with 6-speed automatic transmission	25 MPG city/35 highway/28 combined
ECOTEC 1.4L turbocharged 4-cylinder engine (LT/LTZ) with 6-speed manual transmission	29 MPG city/40 highway/33 combined
ECOTEC 1.4L turbocharged 4-cylinder engine (LT/LTZ) with 6-speed automatic transmission	27 MPG city/37 highway/31 combined
ECOTEC 1.4L turbocharged 4-cylinder engine (RS) with 6-speed manual transmission	Fuel economy estimates not available at this time.
ECOTEC 1.4L turbocharged 4-cylinder engine (RS) with 6-speed automatic transmission	Fuel economy estimates not available at this time.

## FUEL TANK (APPROXIMATE)

12.2 gallons

## PASSENGER VOLUME

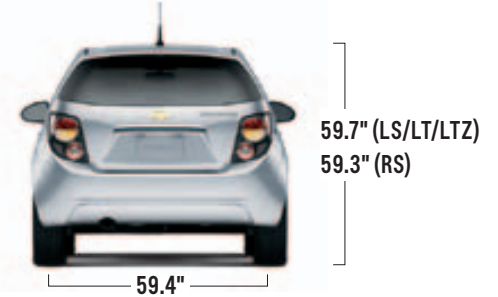
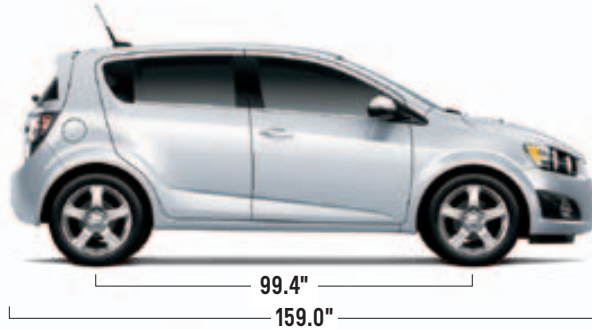
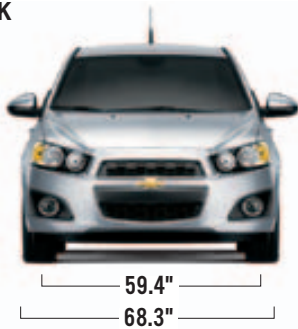
Sedan: 90.4 cubic feet/seats 5  
Hatchback: 90.6 cubic feet/seats 5

## CARGO VOLUME (MAXIMUM)<sup>1</sup>

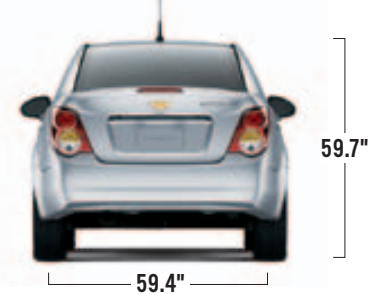
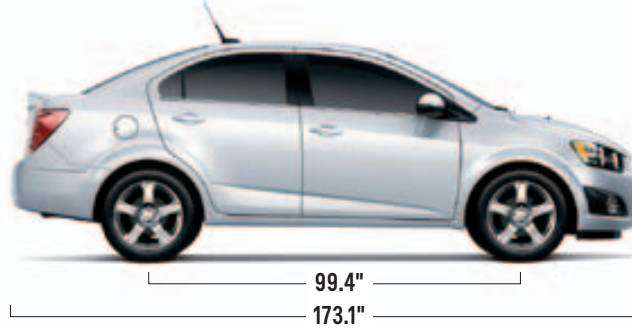
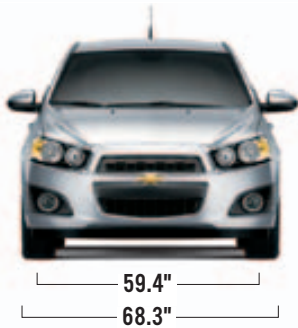
Sedan: 14.9 cubic feet  
Hatchback: 47.7 cubic feet

# DIMENSIONS

## HATCHBACK



## SEDAN



# DEALER-INSTALLED ACCESSORIES PERSONALIZE YOUR SONIC AT CHEVY.COM/ACCESSORIES



17" Black-Painted 5-Spoke Wheel



Door Sill Plate



Pedal Covers



Z-Spec Color-Flash Grille Surround



Z-Spec Color-Flash Mirror Cap



Z-Spec Color-Flash Rear Spoiler

<sup>1</sup> Cargo and load capacity limited by weight and distribution.



# SONIC'S *FIRST* ADVENTURES



## THE SKY WAS THE LIMIT

Sonic may have been made for the streets, but it was destined for so much more. Like being the car of firsts. Some of Sonic's firsts include bungee jumping, skydiving over the Arizona desert and getting kickflipped. Sonic also starred in a music video and made its first street art. With an insatiable appetite for adventure and discovery, Sonic has redefined fun. Life is an adventure – experience your own firsts in a Sonic.

LET'S DO THIS



Modified vehicles. Do not attempt.



## WARRANTY INFORMATION

**100,000-MILE/5-YEAR TRANSFERABLE POWERTRAIN LIMITED WARRANTY.** Every 2013 Chevrolet passenger car, light-duty pickup truck, SUV and crossover comes with a 100,000-mile/5-year (whichever comes first) transferable Powertrain Limited Warranty. Plus, you get 100,000 miles/5 years (whichever comes first) of the 24/7 Roadside Assistance Program, the Courtesy Transportation Program, and much more. See dealer for details.

**NEW VEHICLE LIMITED WARRANTY.** GM vehicles registered in the USA are covered for 36,000 miles/3 years (whichever comes first). The complete vehicle is covered, including tires, towing to your nearest Chevrolet dealership and cosmetic corrosion resulting from defects. Repairs will be made to correct any vehicle defect, and most warranty repairs will be made at no charge. In addition, rust-through corrosion will be covered for 100,000 miles/6 years (whichever comes first). See dealer for details.

**CHEVROLET OWNER CENTER (GMOWNERCENTER.COM/CHEVY).** Register your vehicle with the Chevrolet Owner Center and receive benefits such as online access to your vehicle Owner's Manual, maintenance schedule reminders, service history tracking, warranty and service information, safety information, special offers and privileges, and news and events.

## IMPORTANT INFORMATION

**ENGINES.** Chevrolet products are equipped with engines produced by GM Powertrain or other suppliers to GM worldwide. The engines in Chevrolet products may also be used in other GM makes and models.

**ASSEMBLY.** Chevrolet vehicles and their components are assembled or produced by different operating units of General Motors, its subsidiaries or suppliers to GM worldwide. We sometimes find it necessary to produce Chevrolet vehicles with different or differently sourced components than originally scheduled. Since some options may be unavailable when your vehicle is assembled, we suggest you verify that your vehicle includes the equipment you ordered and that, if there were changes, they are acceptable to you.

**ONSTAR.** OnStar services require vehicle electrical system (including battery), wireless service and GPS satellite signals to be available and operating for features to function properly. OnStar acts as a link to existing emergency service providers. Subscription Service Agreement required. Call 1-888-4ONSTAR (1-888-466-7827) or visit [onstar.com](http://onstar.com) for OnStar Terms and Conditions, Privacy Policy, details and system limitations.

**A NOTE ON CHILD SAFETY.** Always use safety belts and the correct restraint for your child's age and size. Even in vehicles equipped with the Passenger Sensing System, children are safer when properly secured in a rear seat in the appropriate infant, child or booster seat. Never place a rear-facing infant restraint in the front seat of any vehicle equipped with a passenger air bag. See the Owner's Manual and child safety seat instructions for more safety information.

**IMPORTANT WORDS ABOUT THIS CATALOG.** We have tried to make this catalog comprehensive and factual. We reserve the right, however, to make changes at any time, without notice, in prices, colors, materials, equipment, specifications, models and availability. Specifications, dimensions, measurements, ratings and other numbers in this catalog and other printed materials provided at the dealership or affixed to vehicles are approximations based on design and engineering drawings, prototypes and laboratory tests. Your vehicle may differ due to variations in manufacture and equipment. Since some information may have been updated since the time of printing, please check with your Chevrolet dealer for complete details. Chevrolet reserves the right to lengthen or shorten the model year for any product for any reason or to start and end model years at different times.

Certain vehicle features may lose their usefulness over time due to obsolescence from technological changes. Unless otherwise noted, all claims based on GM Small Car segment and latest available competitive information. Excludes other GM vehicles.

**SPARE TIRE INFORMATION.** There is no standard jack or spare tire in the 2013 Chevrolet Sonic LT Sedan with ECOTEC 1.4L turbocharged 4-cylinder engine and 6-speed manual transmission. This vehicle has a tire sealant and compressor kit that uses a liquid tire sealant to temporarily seal up to a one-quarter-inch puncture in the tread area of the tire. After using the tire inflator kit, it is recommended that you take the tire to an authorized retailer for inspection and repair as soon as possible, but at least within 100 miles of driving. The tire sealant cannot seal and inflate sidewall damage, punctures larger than one-quarter inch, or a tire that has unseated from the wheel. The sealant can only be used on one tire and for one time before its expiration date.

**FLEET ORDERS.** Some standard content may be deleted on fleet orders. See dealer for details.

**CHEVY.COM.** Offers shopping tools such as Chevy vehicle information, Build and Price, Find a Vehicle, Request Info, Email Sign-Up, Compare Vehicles, Financial Tools... and much more.

**OWNER SERVICES.** Chevrolet is committed to enhancing the ownership experience through a wide array of programs. For more information about 24-hour Roadside Assistance, Courtesy Transportation, Customer Assistance Center, Chevy Safety, GM Mobility, Chevrolet Owner Center, marketing and incentives, as well as services for GM Card members, visit [chevy.com](http://chevy.com).

**CHEVY.COM/SAFETY.** Chevrolet is committed to keeping you and your family safe—from the start of your journey to your destination. That's why every Chevrolet is designed with a comprehensive list of safety and security features to help give you peace of mind.

**GMMOBILITY.COM (1-800-323-9935).** GM Mobility™ offers financial assistance for eligible adaptive equipment to make automotive travel easier for persons with disabilities or special transportation needs. To learn more about special GM Mobility offers, visit [gmmobility.com](http://gmmobility.com).

**GMCARDMEMBERSERVICES.COM.** Did you know about the family of reward credit cards that can help you get a great deal on a new GM car, light-duty truck, SUV or crossover? With a GM reward card, you accrue earnings on every credit card purchase to use toward the purchase or lease of an eligible new GM vehicle. With three cards to choose from, you're sure to find one that suits you best.

**ECOLOGIC WINDOW LABEL.** As part of our Ecologic™ initiative for environmental responsibility, every 2013 Chevrolet vehicle features a new Ecologic window label detailing some of its fuel-saving technologies, responsible manufacturing processes and end-of-life recyclability. Visit [chevrolet.com/ecologic](http://chevrolet.com/ecologic) for more information.

GM, the GM Logo, Chevrolet, the Chevrolet Logo, and the slogans, emblems, vehicle model names, vehicle body designs and other marks appearing in this catalog are the trademarks and/or service marks of General Motors, its subsidiaries, affiliates or licensors. ©2012 OnStar. All rights reserved. Sirius, XM and all related marks and logos are trademarks of SiriusXM Radio Inc. The Bluetooth word mark is a registered trademark owned by Bluetooth SIG, Inc., and any use of such mark by Chevrolet is under license. iPhone is a trademark of Apple Inc., registered in the U.S. and other countries. App Store is a service mark of Apple Inc. ©2012 General Motors. All rights reserved. August 2012

## OWNERSHIP EXTRAS



[chevy.com/warranty](http://chevy.com/warranty)



**ACCESSORIES**  
[chevy.com/accessories](http://chevy.com/accessories)



[onstar.com](http://onstar.com)



[siriusxm.com](http://siriusxm.com)



[facebook.com/chevysonic](http://facebook.com/chevysonic)



[twitter.com/ChevyLife](http://twitter.com/ChevyLife)



[youtube.com/chevrolet](http://youtube.com/chevrolet)



Sonic RS shown in Victory Red  
and Cyber Gray Metallic.  
Coming Fall 2012.



*chevy.com*