

Chevrolet
**TAHOE
SUBURBAN** *2012*



STEP UP TO
refined travels.
Open the door to new
experiences. This is
TAHOE.

Tahoe LTZ 4WD shown in
White Diamond Tricoat (extra-cost color)
with dealer-installed accessories and other
available features. Available seating for eight.

TAHOE

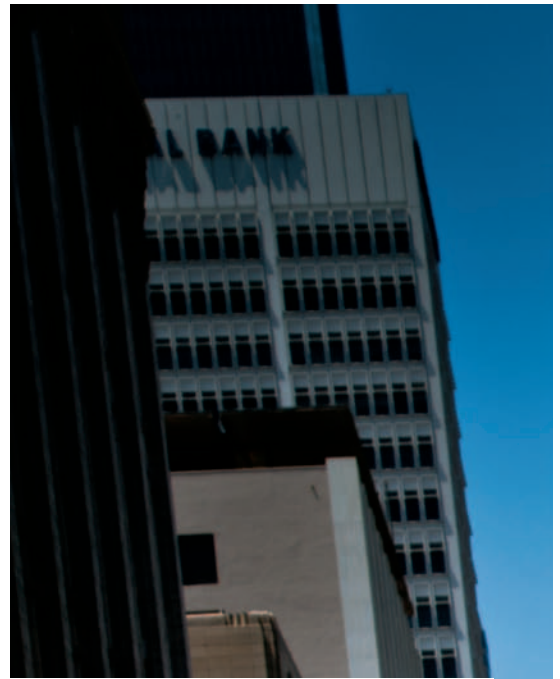
With a Vortec™ 5.3L V8 that offers **FUEL ECONOMY ITS COMPETITORS CAN'T TOP!**¹ the choice of 2WD or 4WD models and **SEATING FOR UP TO NINE,**² Chevy Tahoe is the full-size SUV that is both capable and uncompromising. Accommodations are upscale. Entertainment is high-tech and high-end with amenities for every stretch of the journey. Whether you have plans at the lake or reservations for a table at eight, Tahoe takes you there in comfort and style.

1 EPA-estimated 15 MPG city/21 highway. Based on GM Large Utility segment. 2 LS models only.

AUTHENTIC POWER



Tahoe LTZ 4WD shown in White Diamond Tricoat (extra-cost color) with dealer-installed accessories and other available features. Available seating for eight.



TRUE POWER HAS A QUIET PRESENCE THAT CANNOT BE DENIED.

Just sitting behind the wheel of Tahoe is bound to change your perspective. It starts with a commanding view of the road. A reminder that it's your world—big, broad and brimming with possibilities. After all, this is the full-size SUV that is equally at home in the city as it is on the rugged landscapes of Big Sky country. Either place, it takes a lot of power to hold your own. And Tahoe does that with a Vortec 5.3L V8 that produces **320 HORSEPOWER AND 335 LB.-FT. OF TORQUE** with a maximum towing capacity of 8,500 lbs.¹ That's enough to tow most boats, snowmobiles and a lot of other gear that seriously assists your pursuit of happiness. But aside from sheer strength, Tahoe is also about the intelligent use of power that delivers uncommon efficiency with **ACTIVE FUEL MANAGEMENT AND VARIABLE VALVE TIMING**. Together, these advanced technologies help give Tahoe an impressive **21 MPG² ON THE HIGHWAY**.

chevy.com/tahoe
TO FIND OUT MORE

¹ Maximum trailer weight ratings are calculated assuming a base vehicle, except for any option(s) necessary to achieve these ratings, plus driver. The weight of other optional equipment, passengers and cargo will reduce the maximum trailer weight your vehicle can tow. See your Chevrolet dealer for additional details.
² EPA-estimated. ³ EPA-estimated 15 MPG city/21 highway. Based on GM Large Utility segment.



TAHOE AT A GLANCE

Vortec 5.3L V8 with Active Fuel Management
6-speed automatic transmission
StabiliTrak® Electronic Stability Control
2WD or 4WD models
Seating for up to nine on LS models
Better fuel economy than any competitor³

Jeff Luke enjoys designing for Tahoe and Suburban customers because, as he says, "I feel like I'm one of them."

"As an avid user of the vehicle, I understand the utility of it. I just went hunting in Newfoundland in June. The guide has a 3/4-ton Suburban. This is the vehicle he uses to move all his clients and all their stuff. It has to go over the terrain. It has to be reliable and durable and perform."

Making sure these vehicles perform on all levels means paying attention to the small things. "We spend a lot of time looking at visibility. We look at hand clearance, so you're not bumping your hands on controls. We put a tremendous amount of thought and analysis into making seats that meet safety requirements but also feel comfortable and accommodating."

Building big also means building smart in order to deliver the efficiency customers demand. "Suburban 1/2-ton offers an amazing range—up to **650 MILES OF HIGHWAY DRIVING ON A SINGLE TANK**¹ And our 5.3L engine and 6.0L hybrid engine have **ACTIVE FUEL MANAGEMENT**, which deactivates four cylinders when they're not needed.²

"**VARIABLE VALVE TIMING** controls the valves during intake and exhaust to be more efficient, smarter. It's just another technology for you to consume less fuel when your driving demands don't require it. We look at brake drag and mechanical efficiency loss. We make sure the axle ratios are set properly. In a world where fuel economy matters and gas prices matter, people still understand that these are some of the most fuel-efficient large vehicles on the market for moving people, moving material and towing. We absolutely understand our customers and we owe them a vehicle that meets their requirements."

JEFF LUKE GROUP EXECUTIVE DIRECTOR

DESIGNING *space*

¹ Based on EPA-estimated 15 MPG city/21 highway with the Vortec 5.3L V8 engine. ² EPA-estimated 15 MPG city/21 highway with the 5.3L V8 engine. EPA-estimated 20 MPG city/23 highway with the 6.0L hybrid engine. Tahoe Hybrid is available at participating dealers.

ENJOY THE WORLD of possibilities with seating for up to nine¹ and upscale accommodations. Indulge in visions of far-off places with the impressive fuel economy² and uncompromised capability **OF TAHOE AND SUBURBAN.**



Suburban LTZ interior shown in Cashmere-Color with seating for eight.

“You slide into the seat and think, ‘Boy, is this comfortable.’ You’re able to see all around, and you get that feeling of spaciousness. You put your hands on the steering wheel—the texture is good, a nice amount of friction. You look at gauges, buttons and they’re all logically placed. You get in the back, see how easily the seats flip and fold out of the way. You try those seats, see that your family members are going to be comfortable. These are just some of the experiences we want our customers to have.”

JEFF LUKE GROUP EXECUTIVE DIRECTOR

LTZ INTERIOR AT A GLANCE

- Bose® Centerpoint Surround Sound
- Side Blind Zone Alert
- OnStar Turn-by-Turn Navigation,³ standard for six months
- Heated steering wheel
- Heated and cooled front seats
- Available overhead rear DVD entertainment system
- Power flip-and-fold seats
- Heated second-row seats



Call it a reason for being. Tahoe and Suburban are all about transporting people and keeping them happy and comfortable over the long haul. The “how” is simple enough. Keep everyone connected and entertained. That’s why both Tahoe and Suburban offer an all-new available **TOUCH-SCREEN NAVIGATION AND ENTERTAINMENT SYSTEM**.

At the heart of it: the 7-inch diagonal color touch-screen. Enjoy the convenience of an integral **REAR VISION CAMERA**, voice recognition and USB port¹ for your iPod.² **SIRIUSXM NAVTRAFFIC**³ allows you to maneuver around congestion with real-time traffic updates downloadable to a 2D or 3D full-color map display. Meanwhile, SiriusXM Satellite Radio⁴ (with a three-month trial) integration with a pause-and-play feature gives you the ability to pause a live radio broadcast if, say, you’re in the middle of a conversation. A hard drive with up to 30 GB lets you store your favorite music and everyone else’s, for that matter. This all-new navigation system is available on LT and standard on LTZ.

ONSTAR® REMOTELINK™⁵ MOBILE APP

With your OnStar subscription,⁵ standard for six months, you can download the RemoteLink app to your smartphone and remotely lock or unlock your door and start your engine⁷ before ever stepping inside. RemoteLink can also check your fuel and oil levels and tell you how much range is left in your tank—all from the palm of your hand.

BLUETOOTH® HANDS-FREE CALLING⁶

Orchestrating a family’s activities takes communication on the go. Bluetooth wireless technology, available for select phones, lets you make, answer and end calls without lifting your hands from the steering wheel.

MYCHEVROLET MOBILE APP⁹

Connect to your vehicle with this remote app that lets you schedule a service appointment with the nearest dealer. Create a reminder of where you parked or quickly reference warning lights and indicators to see what they mean for your vehicle.

¹ Not compatible with all devices. ² iPod is a mobile digital device. iPod is a registered trademark of Apple Inc., registered in the U.S. and other countries. ³ Requires available navigation radio. Requires a subscription sold separately by SiriusXM. Available only in select markets. For more information, see siriusxm.com/navtraffic. ⁴ Requires a subscription sold separately by SiriusXM after three-month trial. Available only in the 48 contiguous United States and Washington, D.C. Visit siriusxm.com for more information. ⁵ Requires Android or iPhone platform and active OnStar subscription, which is standard for six months. ⁶ Visit onstar.com for coverage map, details and system limitations. Services vary by model and conditions. ⁷ Requires available remote start. ⁸ Go to gm.com/bluetooth to find out which phones are compatible with the vehicle. ⁹ Requires Android or iPhone platform.

SUBURBAN



77 YEARS OF
*memories protected by a vast
fortress of comfort and security.
Innovation inspired. Family desired.*
SUBURBAN.

Suburban LTZ 4WD shown in
Black with available features.


352 HORSE-POWER
+ 382 LB.-FT. TORQUE
9,600 LBS. TOWING CAPACITY¹

It's been a rewarding journey. In all, 77 YEARS of moving kids, friends...and kids' friends, all around the country. More than seven decades of stowing gear and towing toys from pristine beaches to breathtaking mountains. And as much as we're keeping what you love about Suburban the same, we're always innovating and updating to make it even better for the next generation. Just like a family tradition.

Whether you need to move quarter horses or tow a boat, the **3/4-TON SUBURBAN IS BUILT TO PULL**. A **HEAVY-DUTY FULLY BOXED FRAME** provides stiffness, the long wheelbase enhances the ride, and the standard Vortec 6.0L V8 engine delivers the torque across a wide rpm range. Finally, an **INTEGRATED TRAILER BRAKE CONTROL** helps keep even the heaviest loads under control. It all adds up to 9,600 lbs. of maximum trailering power¹ and **BEST-IN-CLASS PAYLOAD CAPACITY** on 2WD models.

¹ Maximum trailer weight ratings are calculated assuming a base vehicle, except for any option(s) necessary to achieve these ratings, plus driver. The weight of other optional equipment, passengers and cargo will reduce the maximum trailer weight your vehicle can tow. See your Chevrolet dealer for additional details.





Suburban LTZ 4WD
shown in Black with available features.
Available seating for eight.

SUBURBAN AT A GLANCE

2WD or 4WD models
5.3L (1/2-ton) or 6.0L (3/4-ton) V8 engines
Up to 137.4 cu. ft. of cargo capacity¹
Seating for up to nine on LS models
Tows up to 9,600 lbs. (2WD 3/4-ton models)²

BOLD LEGACY



Transporting people has always been its strong suit. But today, more than ever, Suburban has become a part of the family like no other. A full-size SUV that's handed down through generations—a legacy Chevy is truly proud of and honored by. And while we've kept the personality the same, we've updated the things that make this trusted family friend more beloved than ever. The styling is classic and contemporary, rugged and refined. The performance is smooth, and it comes on strong with incredible towing power and the advanced technology required in today's world. Under the hood, the **VORTEC 5.3L V8 (1/2-TON) OFFERS 320 HORSES AND 335 LB.-FT. OF TORQUE.** For even more muscle, the **VORTEC 6.0L V8 (3/4-TON) GENERATES 352 HORSEPOWER AND 382 LB.-FT. OF TORQUE.** Match that with a 6-speed automatic transmission and a fully boxed frame, and you've got a wonderfully smooth and capable driving experience. Advanced technology offers unexpected fuel efficiency,³ making Suburban a smart way to move family, friends and everything you need to take along. With **2WD OR 4WD MODELS**, you can find the balance of capability and efficiency that's best for you. Of course, no conversation about Suburban is complete without talking about its vast, relaxing interior. Add OnStar,⁴ standard for six months and **SIRIUSXM SATELLITE RADIO**⁵ with three-month trial, and Suburban makes one great way to get out of town.

chevy.com/suburban
FIND OUT MORE



¹ Cargo and load capacity limited by weight and distribution. ² Maximum trailer weight ratings are calculated assuming a base vehicle, except for any option(s) necessary to achieve these ratings, plus driver. The weight of other optional equipment, passengers and cargo will reduce the maximum trailer weight your vehicle can tow. See your Chevrolet dealer for additional details. ³ 1/2-ton models: EPA-estimated 15 MPG city/21 hwy. 3/4-ton models: EPA-estimated 10 MPG city/16 hwy. (2WD); 10 MPG city/15 hwy. (4WD) ⁴ Visit onstar.com for coverage map, details and system limitations. Services vary by model and conditions. ⁵ Requires a subscription sold separately by SiriusXM after three-month trial. Available only in the 48 contiguous United States and Washington, D.C. Visit siriusxm.com for more information.

Z71

TRAVEL YOUR OWN ROAD

Suburban Z71
shown in Crystal Red Tintcoat
(extra-cost color).



There's a reason adventurous types favor Tahoe and Suburban. With legendary spaciousness, a stout frame, powerful engines and available **4WD CAPABILITY**, they are the rugged and dependable way to move people, boats and gear. You can add to that sense of adventure with the available **Z71 OFF-ROAD SUSPENSION PACKAGE**. Skid plates help protect the undercarriage and oil pan. **MONOTUBE SHOCKS**, wheel flares and an **AUTOMATIC LOCKING REAR DIFFERENTIAL** let Z71 dominate the toughest terrain.



TAHOE HYBRID

AMERICA'S
first full-size
HYBRID SUV.

FIRST IN CLASS

TAHOE HYBRID AT A GLANCE

Best-in-class fuel economy¹
Vortec 6.0L V8 with Active Fuel Management
Electric Hybrid Propulsion with 300-volt Energy Storage System
Electronically Variable Transmission with integral electric motors
Regenerative Braking System

Tahoe Hybrid shown in
Silver Ice Metallic.

After building a full-size SUV with fuel economy that's better than any competitor,² Chevy engineers weren't content to rest on their laurels. They pushed ahead and developed the **WORLD'S FIRST FULL-SIZE HYBRID³ SUV**. This is a true hybrid with an **EPA-ESTIMATED 20 MPG CITY AND 23 HIGHWAY**, offering significant fuel savings over nonhybrid competitors.

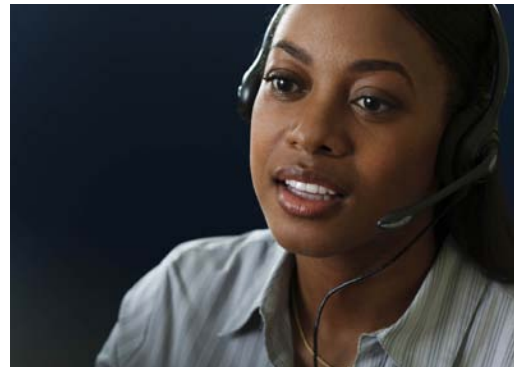
The brain of the Tahoe Hybrid is a control module—the hybrid operating system—that monitors the drive system hundreds of times a second to continuously search for the most efficient hybrid system operation to propel the vehicle. In stop-and-go conditions, the hybrid operating system employs gas or electric power—or a mixture of both—and can turn the gas engine off when moving less than 30 mph. In steady cruising conditions, the **332-HORSEPOWER 6.0L V8 ENGINE** provides most of the power, with one or both of the electronically variable transmission's (EVT) electric motors providing either additional propulsion or electrical energy used to charge the battery. When you need to tow a heavy load, the transmission shifts to one of the fixed gears and then uses the power of the V8 gas engine to provide

all the punch. You can also see how the power is shifting on the navigation screen, which monitors hybrid system functions with the Power Flow diagram.

Tahoe Hybrid has been engineered for efficiency. **REGENERATIVE BRAKING** captures energy that would otherwise be expended by braking friction. By using one or both of the EVT's tractive motors as a generator, braking energy is converted to electrical energy and is stored in the battery for future use to propel the vehicle. Lightweight aluminum in the hood, tailgate and wheels helps offset the weight of the battery. Millimeters were shaved from the chassis and tiny alterations were made to increase aerodynamic performance. Even the tires have low rolling resistance, cutting required rolling effort and optimizing fuel efficiency.³ It's arguably the most forward-thinking full-size SUV ever built. Leave it to a member of a family with a rich past to lead the charge into the future.

¹ EPA-estimated 20 MPG city/23 highway. Based on GM Large Utility segment. ² EPA-estimated 15 MPG city/21 highway. Based on GM Large Utility segment. ³ Available at participating dealers.

A safety philosophy that **RUNS DEEP**



BEFORE

What's the best safety philosophy? Avoid a collision in the first place. And that starts with backing out of the driveway. An available **REAR VISION CAMERA** helps you detect certain stationary objects while traveling in Reverse at low speeds. On the road, the available **SIDE BLIND ZONE ALERT**¹ flashes a visual warning to let you know when a vehicle has entered your blind spot.

In slick conditions, **STABILITRAK ELECTRONIC STABILITY CONTROL** with **TRACTION CONTROL** helps you stay the course by detecting the difference between the path being steered and the direction your vehicle is actually traveling. It then uses the brakes and, if necessary, adjusts engine torque to help you keep your vehicle on track. What's more, **FOUR-WHEEL ANTILOCK BRAKES** help maintain control and stability during hard braking by preventing wheel lockup. These are just some of the forward-thinking ways we help you avoid trouble on the road.

DURING

Sometimes, however, trouble finds you. And if a moderate to severe collision does happen, Tahoe and Suburban are designed to respond instantly. Sensors throughout each vehicle determine how many of the **SIX STANDARD AIR BAGS**,² including head-curtain side-impact air bags, deploy. Adding to this protection, we reinforced the roof pillars and safety cage with **HIGH-STRENGTH STEEL** to help you feel a sense of security that's all-encompassing. But our protective measures don't end there.

AFTER

Should a collision occur, crucial information can be instantly relayed to the OnStar command center via **ONSTAR AUTOMATIC CRASH RESPONSE**.³ There, trained Advisors utilize GPS technology to pinpoint your exact location and request that assistance be sent right away—even if you're unable to respond. It's part of **ONSTAR DIRECTIONS & CONNECTIONS**³ which is standard for six months, because nothing is more important than your safety.



¹ Before making a lane change, always check the Side Blind Zone Alert display, check the side and inside rearview mirrors, look over your shoulder for vehicles and hazards, and start the turn signal.

² Always use safety belts and proper child restraints. Children are safer when properly secured in a rear seat. See the Owner's Manual for more information. ³ Visit onstar.com for coverage map, details and system limitations. Services vary by model and conditions. OnStar acts as a link to existing emergency service providers.

TAHOE SPECIFICATIONS

■ STANDARD □ AVAILABLE – NOT AVAILABLE

	LS	LT	LTZ	HY ¹
EXTERIOR				
Assist steps: Black	■	■ ²	■	■
Power-retractable with chrome accent strip	–	–	□	–
Door handles: Body-color	■	■	–	■
Chrome	–	–	■	–
Liftgate: Power-remote with washer/wiper	–	□ ³	■	–
Lights: Automatic headlamps and Daytime Running Lamps	■	■	■	■
Luggage rack: Roof-mounted with side and center rails	■	■	■	–
Mirrors: Power, heated driver- and passenger-side	■	■	■	■
Power-folding, driver-side auto-dimming	–	□ ³	■	■
Rear Parking Assist	□ ⁴	■	■	■
ENGINES/CHASSIS				
Engine: Vortec 5.3L V8 with Active Fuel Management and E85 FlexFuel capability ⁵	■	■	■	–
Vortec 6.0L V8 with Active Fuel Management	–	–	–	■
Heavy-Duty Trailering Package				
	□	□	□	–
Suspension: Premium Smooth Ride	■	■	–	■
Autoride	–	–	■	–
Transfer case: Active, single-speed, electronic Autotrac [®] with rotary controls ⁶ (4WD)	■	■	–	–
Active, 2-speed, electronic Autotrac with rotary controls and Neutral position for dinghy towing (4WD)	□ ⁷	□ ⁸	■	■
Transmission: 6-speed automatic, electronically controlled with overdrive and Tow/Haul mode	■	■	■	–
Strong hybrid-specific, electronically controlled with overdrive	–	–	–	■
Z71 Off-Road Suspension Package: Specially tuned springs and monotube shock absorbers, high-capacity air cleaner, Skid Plate Package with aluminum front underbody shield, automatic locking rear differential, 18" aluminum wheels with on-/off-road blackwall tires, recovery hooks, tubular assist steps, unique front fascia with chrome grille insert, Z71-specific gauge cluster and 2-speed transfer case with 4WD models				
	–	□	–	–
SAFETY & SECURITY				
Air bags: ⁹ Driver and right-front passenger, dual-stage, frontal; passenger side includes Passenger Sensing System; and head-curtain side-impact for all outboard seating positions with rollover sensor; seat-mounted side-impact, driver and right-front passenger for thorax and pelvic protection	■	■	■	■
Brakes: Four-wheel antilock disc	■	■	■	■
OnStar ¹⁰ Directions & Connections with Turn-by-Turn Navigation standard for the first six months	■	■	■	■
Side Blind Zone Alert	–	–	■	–
StabiliTrak Electronic Stability Control System with Traction Control	■	■	■	■
INTERIOR				
Bluetooth [®] wireless technology ¹¹ for select phones	■	■	■	■
Climate Control: Tri-zone manual with individual climate settings for driver, right-front passenger and rear passengers	■	–	–	–
Tri-zone automatic with individual climate settings for driver, right-front passenger and rear passengers	–	■	■	■
Convenience Package: Power-adjustable pedals, remote vehicle starter system, Rear Parking Assist, rear vision camera and inside rearview mirror with rear vision camera display				
	□	–	–	–

	LS	LT	LTZ	HY ¹
INTERIOR (CONTINUED)				
Instrumentation: Analog, with speedometer, odometer with trip odometer, fuel level, engine temperature, oil pressure and tachometer	■	■	■	■
Luxury Package: 10-way power front bucket seats with leather appointments; heated second-row seats with power-release function; outside, heated, power-adjustable, power-folding mirrors; power-remote liftgate; inside auto-dimming rearview mirror; and Universal Home Remote transmitter				
	–	□	–	–
Pedals: Power-adjustable for accelerator and brake	□ ⁴	■	■	■
Rear vision camera	□ ⁴	□	■	■
Remote Keyless Entry	■	■	■	■
Remote vehicle starter system	□ ⁴	■	■	■
Steering wheel: Leather-wrapped with audio and cruise controls	■	■	■	■
Heated	–	–	■	–
Sunroof: Power, tilt-sliding with Express-Open/-Close and wind deflector	–	□	□	□
Windows: Power, with driver's Express-Down and lockout features	■	■	■	■
SEATING				
Cloth: Premium Cloth front bucket seats with six-way power driver and right-front passenger seats and floor console	■	–	–	–
Premium Cloth 40/20/40 split-bench front seat with six-way power driver and manual front passenger seats	□	–	–	–
Custom leather-appointed, heated front bucket seats with six-way power driver and right-front passenger seats and front console	–	■	–	■
Custom leather-appointed, heated front bucket seats with 10-way power driver and right-front passenger seats and floor console	–	□ ⁹	–	–
Perforated leather-appointed, heated and cooled front bucket seats with 12-way power driver and right-front passenger seats, driver memory, driver/passenger power recline and lumbar support, and uplevel floor console	–	–	■	–
AUDIO SYSTEMS				
AM/FM stereo, CD/MP3 player	■	■	–	–
AM/FM stereo, CD/MP3 player with touch-screen navigation radio	–	□ ¹²	■	■
Six-speaker sound system	■	–	–	–
Bose [®] nine-speaker sound system	–	■	–	■
Bose Centerpoint [®] surround sound 10-speaker system	–	–	■	–
Entertainment system: Rear-seat DVD player with remote control and LCD color display in second row	–	□	□ ¹²	□ ¹²
SiriusXM NavTraffic ¹³	–	□ ¹⁴	–	–
SiriusXM NavTraffic ¹⁵ with three trial months	–	–	■	–
SiriusXM NavTraffic ¹⁵ with three-year subscription	–	–	–	■
SiriusXM Radio ¹⁶ with three trial months	■	■	■	■
USB port ¹⁷	■	■	■	■
WHEELS				
17" aluminum	■	■	–	–
18" aluminum	–	□ ¹⁸	–	–
18" twelve-spoke aluminum	–	–	–	■
20" polished-aluminum	□	□	■	–
20" chrome-aluminum	–	–	□	–
Tire: Full-size spare	■	■	■	–

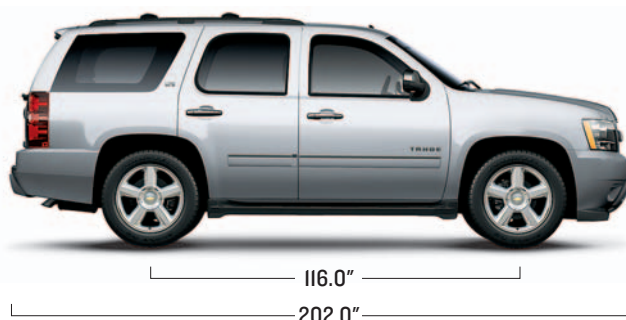
¹ Available at participating dealers. ² Not available with Z71 Off-Road Suspension Package. ³ Requires available Luxury Package. ⁴ Requires available Convenience Package. ⁵ E85 is a combination of 85% ethanol and 15% gasoline. Go to chevy.com/biofuels to see if there is an E85 fuel station near you. When running on E85, Tahoe offers an EPA-estimated 11 MPG city/16 highway. ⁶ Not available with Heavy-Duty Trailering Package. ⁷ Requires available Heavy-Duty Trailering Package. ⁸ Requires available Heavy-Duty Trailering Package or Z71 Off-Road Suspension Package. ⁹ Always use safety belts and child restraints. Children are safer when properly secured in a rear seat in the appropriate child restraint. See the Owner's Manual for more information. ¹⁰ Visit onstar.com for coverage map, details and system limitations. Services vary by model and conditions. ¹¹ Go to gm.com/bluetooth to find out which phones are compatible with the vehicle. ¹² Requires available Sun, Entertainment and Destinations Package. ¹³ Requires a subscription sold separately by SiriusXM. Available only in select markets. For more information, see siriusxm.com/navtraffic. ¹⁴ Requires available navigation radio. ¹⁵ Requires a subscription sold separately by SiriusXM after trial. Available only in select markets. For more information, see siriusxm.com/navtraffic. ¹⁶ Requires a subscription sold separately by SiriusXM after trial. Available only in the 48 contiguous United States and Washington, D.C. Visit siriusxm.com for details. ¹⁷ Not compatible with all devices. ¹⁸ Requires available Z71 Off-Road Suspension Package. ¹⁹ Maximum trailer weight ratings are calculated assuming a base vehicle, except for any options(s) necessary to achieve the rating, plus driver. The weight of other optional equipment, passengers and cargo will reduce the maximum trailer weight your vehicle can tow. See your Chevy dealer for additional details. ²⁰ Cargo and load capacity limited by weight and distribution. ²¹ Use only GM-approved wheel/tire combinations. See gmaccessorieszone.com for details.

MAXIMUM CAPACITIES

EPA-ESTIMATED FUEL ECONOMY (WHEN RUNNING ON GASOLINE)	15 city/21 highway Hybrid: 20 city/23 highway
FUEL TANK (APPROXIMATE: GAS/HYBRID)	26/25 gallons
TOWING ¹⁹ (GAS/HYBRID)	2WD: 8,500/6,200 lbs. 4WD: 8,200/5,900 lbs.

SEATING	LS: seats 8, option for 9 LT: seats 8, option for 7 LTZ: seats 7, option for 8 Hybrid: seats 8
CARGO VOLUME ²⁰ (CUBIC FEET)	Behind third-row seat: 16.9 With third-row seat folded: 60.3 With second- and third-row seats folded: 108.9

DIMENSIONS



SELECT TAHOE FEATURES

TAHOE LS

Eight-passenger seating standard; nine-passenger seating available

Premium Cloth seats

Front bucket seats with six-way power adjusters

Tri-zone manual climate controls

USB port¹⁷ and Bluetooth wireless technology¹¹ for select phones

SiriusXM Radio¹⁶ with three trial months

OnStar Directions & Connections¹⁰ standard for the first six months

TAHOE LT

In addition to or replacing LS features, LT includes:

Eight-passenger seating

Leather-appointed first- and second-row seats with heated front seats

Tri-zone automatic climate controls

Bose nine-speaker sound system

Remote vehicle starter system

Rear Parking Assist

Power-adjustable pedals

TAHOE LTZ

In addition to or replacing LT features, LTZ includes:

Seven-passenger seating

Perforated leather-appointed first- and second-row seats

Front bucket seats with 12-way power adjusters

Heated and cooled first-row seats; heated second-row seats with power release

Power-remote liftgate

20" polished-aluminum wheels

Touch-screen navigation radio with rear vision camera display

SiriusXM NavTraffic¹⁵ with three trial months

Bose Centerpoint surround sound 10-speaker system

Heated steering wheel

Side Blind Zone Alert

TAHOE HYBRID¹

In addition to or replacing LT features, Hybrid includes:

Vortec 6.0L V8 with Active Fuel Management

Hybrid Propulsion System

Touch-screen navigation radio with rear vision camera display

SiriusXM NavTraffic¹⁵ with three-year subscription

DEALER-INSTALLED ACCESSORIES PERSONALIZE YOUR TAHOE AT CHEVY.COM/ACCESSORIES



22" 12-Spoke Split-Aluminum Alloy Wheel²¹



Chrome Fuel Door



Outside Rearview Mirror Covers



Stainless Steel Exhaust Tip

SUBURBAN SPECIFICATIONS

■ STANDARD □ AVAILABLE – NOT AVAILABLE

	LS	LT	LTZ
EXTERIOR			
Assist steps: Black	■	■ ¹	■
Power-retractable with chrome accent strip	–	–	□
Door handles: Body-color	■	■	–
Chrome	–	–	■
Liftgate: Power-remote with washer/wiper	–	□ ²	■
Lights: Automatic headlamps and Daytime Running Lamps	■	■	■
Luggage rack: Roof-mounted with side and center rails	■	■	■
Mirrors: Power, heated driver- and passenger-side	■	■	■
Power-folding, driver-side auto-dimming	–	□ ²	■
Rear Parking Assist	□ ³	■	■
ENGINES/CHASSIS			
Engine: Vortec 5.3L V8 with Active Fuel Management and E85 FlexFuel capability ⁴ (1/2-ton)	■	■	■
Vortec 6.0L V8 with Variable Valve Timing (3/4-ton)	■	■	–
Heavy-Duty Trailering Package (1/2-ton)	□	□	□
Suspension: Premium Smooth Ride (1/2-ton)	■	■	–
Handling/Trailering heavy-duty (3/4-ton)	■	■	–
Autoride	–	–	■
Transfer case: Active, single-speed, electronic Autotrac [®] with rotary controls ⁵ (4WD 1/2-ton)	■	■	–
Active, 2-speed, electronic Autotrac with rotary controls and Neutral position for dinghy towing (4WD 1/2-ton)	□ ⁶	□ ⁷	■
Active, 2-speed, electronic Autotrac with rotary controls and Neutral position for dinghy towing (4WD 3/4-ton)	■	■	–
Transmission: Hydra-Matic 6-speed automatic electronically controlled with overdrive and Tow/Haul mode (1/2-ton)	■	■	■
Hydra-Matic 6-speed automatic, heavy-duty, electronically controlled with overdrive and Tow/Haul mode (3/4-ton)	■	■	–
Z71 Off-Road Suspension Package: Specially tuned springs and monotube shock absorbers, high-capacity air cleaner, Skid Plate Package with aluminum front underbody shield, automatic locking rear differential, 18" aluminum wheels with on-/off-road blackwall tires, recovery hooks, tubular assist steps, unique front fascia with chrome grille insert, Z71-specific gauge cluster and 2-speed transfer case with 4WD models (1/2-ton)	–	□	–
SAFETY & SECURITY			
Air bags: ⁸ Driver and right-front passenger, dual-stage, frontal; passenger side includes Passenger Sensing System; head-curtain side-impact for all outboard positions; seat-mounted for driver and right-front passenger	■	■	■
Brakes: Four-wheel antilock disc	■	■	■
OnStar ⁹ Directions & Connections with Turn-by-Turn Navigation standard for the first six months	■	■	■
Side Blind Zone Alert	–	–	■
StabiliTrak Electronic Stability Control System with Traction Control	■	■	■
Tire Pressure Monitoring System (excludes spare)	■	■	■
Vehicle Theft-Deterrent System	■	■	■
INTERIOR			
Bluetooth [®] wireless technology ¹⁰ for select phones	■	■	■
Climate Control: Tri-zone manual climate controls with individual climate settings for driver, right-front passenger and rear passengers	■	–	–
Tri-zone automatic climate controls with individual climate settings for driver, right-front passenger and rear passengers	–	■	■

	LS	LT	LTZ
INTERIOR (CONTINUED)			
Convenience Package: Power-adjustable pedals, remote vehicle starter system, Rear Parking Assist, rear vision camera and inside rearview mirror with rear vision camera display	□	–	–
Instrumentation: Analog, with speedometer, odometer with trip odometer, fuel level, engine temperature, oil pressure and tachometer	■	■	■
Luxury Package: 10-way power front bucket seats with leather appointments; heated second-row seats with power-release function; outside, heated, power-adjustable, power-folding mirrors; power-remote liftgate; inside auto-dimming rearview mirror; and Universal Home Remote transmitter	–	□	–
Pedals: Power-adjustable for accelerator and brake	□ ³	■	■
Rear vision camera	□ ³	□	■
Remote Keyless Entry	■	■	■
Remote vehicle starter system	□ ³	■	■
Steering wheel: Leather-wrapped with audio and cruise controls	■	■	■
Heated	–	–	■
Sunroof: Power, tilt-sliding with Express-Open/-Close and wind deflector	–	□	□
SEATING			
Cloth: Premium Cloth front bucket seats with six-way power driver and right-front passenger seats and floor console	■	–	–
Premium Cloth 40/20/40 split-bench front seat with six-way power driver and manual front passenger seats	□	–	–
Custom leather-appointed, heated front bucket seats with six-way power driver and right-front passenger seats and front console	–	■	–
Custom leather-appointed, heated front bucket seats with 10-way power driver and right-front passenger seats and floor console	–	□ ²	–
Perforated leather-appointed, heated and cooled front bucket seats with 12-way power driver and right-front passenger seats, driver memory, driver/passenger power recline and lumbar support, and uplevel floor console	–	–	■
AUDIO SYSTEMS			
AM/FM stereo, CD/MP3 player	■	■	–
AM/FM stereo, CD/MP3 player with touch-screen navigation radio	–	□ ¹¹	■
Six-speaker sound system	■	–	–
Bose [®] nine-speaker sound system	–	■	–
Bose Centerpoint [®] surround sound 10-speaker system	–	–	■
Entertainment system: Rear-seat DVD player with remote control and LCD color display in second and third rows	–	□	□ ¹¹
SiriusXM NavTraffic ¹²	–	□ ¹³	–
SiriusXM NavTraffic ¹⁴ with three trial months	–	–	■
SiriusXM Radio ¹⁵ with three trial months	■	■	■
USB port ¹⁶	■	■	■
WHEELS			
17" aluminum (1/2-ton)	■	■	–
17" eight-lug aluminum (3/4-ton)	■	■	–
18" aluminum (1/2-ton)	–	□ ¹⁷	–
20" polished-aluminum (1/2-ton)	□	□	■
20" chrome-aluminum	–	–	□
Tire: Full-size spare	■	■	■

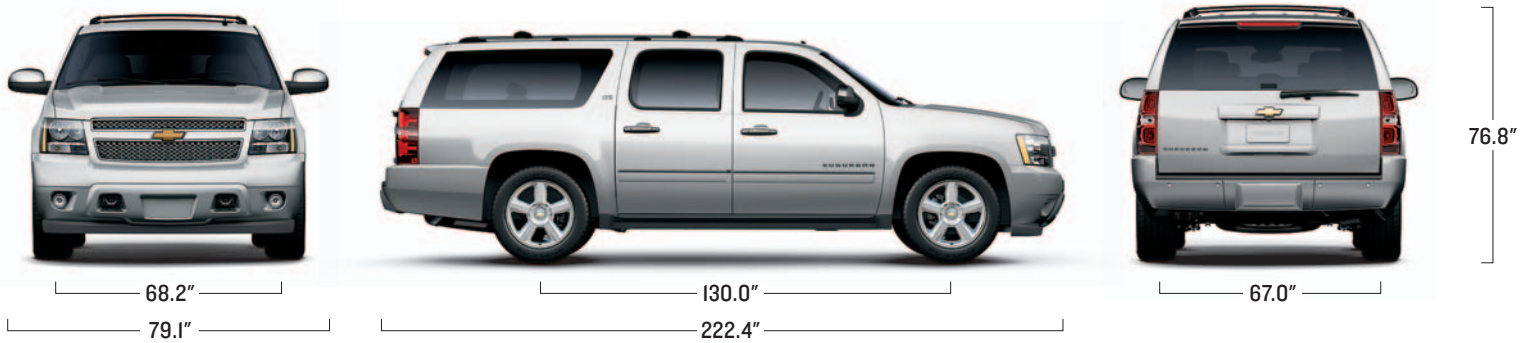
1 Not available with Z71 Off-Road Suspension Package. 2 Requires available Luxury Package. 3 Requires available Convenience Package. 4 E85 is a combination of 85% ethanol and 15% gasoline. Go to chevy.com/biofuels to see if there is an E85 fuel station near you. When running on E85, Suburban offers an EPA-estimated 11 MPG city/16 highway. 5 Not available with Heavy-Duty Trailering Package. 6 Requires available Heavy-Duty Trailering Package. 7 Requires available Heavy-Duty Trailering Package or Z71 Off-Road Suspension Package. 8 Always use safety belts and child restraints. Children are safer when properly secured in a rear seat in the appropriate child restraint. See the Owner's Manual for more information. 9 Visit onstar.com for coverage map, details and system limitations. Services vary by model and conditions. 10 Go to gm.com/bluetooth to find out which phones are compatible with the vehicle. 11 Requires available Sun, Entertainment and Destinations Package. 12 Requires a subscription sold separately by SiriusXM. Available only in select markets. For more information, see siriusxm.com/navtraffic. 13 Requires available navigation radio. 14 Requires a subscription sold separately by SiriusXM after trial. Available only in select markets. For more information, see siriusxm.com/navtraffic. 15 Requires a subscription sold separately by SiriusXM after trial. Available only in the 48 contiguous United States and Washington, D.C. Visit siriusxm.com for details. 16 Not compatible with all devices. 17 Requires available Z71 Off-Road Suspension Package. 18 Maximum trailer weight ratings are calculated assuming a base vehicle, except for any options(s) necessary to achieve the rating, plus driver. The weight of other optional equipment, passengers and cargo will reduce the maximum trailer weight your vehicle can tow. See your Chevy dealer for additional details. 19 Cargo and load capacity limited by weight and distribution.

MAXIMUM CAPACITIES

EPA-ESTIMATED FUEL ECONOMY	2WD (1/2-ton): 15 city/21 highway 4WD (1/2-ton): 15 city/21 highway 2WD (3/4-ton): 10 city/16 highway 4WD (3/4-ton): 10 city/15 highway
FUEL TANK (APPROXIMATE: 1/2-TON / 3/4-TON)	31/39 gallons
TOWING¹⁸ (1/2-TON / 3/4-TON)	2WD: 8,100/9,600 lbs. 4WD: 8,000/9,400 lbs.

SEATING	LS: seats 8, option for 9 LT: seats 8, option for 7 LTZ: seats 7, option for 8
CARGO VOLUME¹⁹ (CUBIC FEET)	Behind third-row seat: 45.8 With third-row seat folded: 90.0 With second- and third-row seats folded: 137.4

DIMENSIONS



SELECT SUBURBAN FEATURES

SUBURBAN LS (1/2-TON / 3/4-TON)

- Eight-passenger seating standard; nine-passenger seating available
- Premium Cloth seats
- Front bucket seats with six-way power adjusters
- Tri-zone manual climate controls
- USB port¹⁶ and Bluetooth wireless technology¹⁰ for select phones
- SiriusXM Radio¹⁵ with three trial months
- OnStar Directions & Connections⁹ standard for the first six months

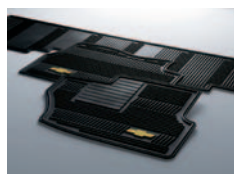
SUBURBAN LT (1/2-TON / 3/4-TON)

- In addition to or replacing LS features, LT includes:*
- Eight-passenger seating
 - Leather-appointed first- and second-row seats with heated front seats
 - Fog lamps
 - Tri-zone automatic climate controls
 - Bose nine-speaker sound system
 - Remote vehicle starter system
 - Rear Parking Assist
 - Power-adjustable pedals

SUBURBAN LTZ (1/2-TON)

- In addition to or replacing LT features, LTZ includes:*
- Seven-passenger seating
 - Perforated leather-appointed first- and second-row seats
 - Front bucket seats with 12-way power adjusters
 - Heated and cooled first-row seats; heated second-row seats with power release
 - Power-remote liftgate
 - 20" polished-aluminum wheels
 - Touch-screen navigation radio and rear vision camera display
 - SiriusXM NavTraffic¹⁴ with three trial months
 - Bose Centerpoint surround sound 10-speaker system
 - Heated steering wheel
 - Side Blind Zone Alert

DEALER-INSTALLED ACCESSORIES PERSONALIZE YOUR SUBURBAN AT CHEVY.COM/ACCESSORIES



All-Weather Premium Floor Mats



Head Restraint DVD System



Hitch Ball Assembly



Rear Floor Console Organizer

TAHOE/SUBURBAN COLORS



Black



Black Granite Metallic^{1,2,3}



Blue Topaz Metallic^{1,3,4,5,6}



Crystal Red Tintcoat¹



Mocha Steel Metallic²



Gold Mist Metallic^{3,5}



Graystone Metallic²



Silver Ice Metallic



White Diamond Tricoat^{1,7}



Summit White

TAHOE/SUBURBAN FABRICS



Ebony
Premium Cloth⁸



Light Cashmere-/Dark Cashmere-Color
Premium Cloth⁸



Ebony
Leather Appointments⁹



Titanium-Color
Leather Appointments⁹



Cashmere-Color
Leather Appointments⁹



Ebony Perforated
Leather Appointments¹⁰



Titanium-Color Perforated
Leather Appointments¹⁰



Cashmere-Color Perforated
Leather Appointments¹⁰

TAHOE/SUBURBAN WHEELS



17" Eight-Lug Bright
Machined-Aluminum Wheel
(standard on 3/4-ton)



17" Aluminum Wheel
with Rectangular Pockets
(standard on LS and
LT 1/2-ton)



18" Aluminum Wheel
(available on LT 1/2-ton;
requires available Z71
Off-Road Suspension Package)



18" 12-Spoke
Aluminum Wheel
(standard on Hybrid)



20" Polished-Aluminum
Wheel
(standard on LTZ)



20" Chrome-Aluminum
Wheel
(available on LTZ)

1 Extra-cost color. 2 Interim availability. 3 Not available with Z71 Off-Road Suspension Package. 4 Available Spring 2012. 5 Not available on Tahoe Hybrid. 6 Not available on 3/4-ton Suburban. 7 Only available on LTZ. 8 Standard on LS. 9 Standard on LT and Hybrid. 10 Standard on LTZ.

IMPORTANT INFORMATION

100,000-MILE/5-YEAR TRANSFERABLE POWERTRAIN LIMITED WARRANTY.

Every 2012 Chevy passenger car, light-duty truck, SUV and crossover comes with a 100,000-mile/5-year (whichever comes first) transferable Powertrain Limited Warranty. Plus, you get 100,000 miles/5 years (whichever comes first) of the 24/7 Roadside Assistance Program, the Courtesy Transportation Program, and much more. See dealer for details.

NEW VEHICLE LIMITED WARRANTY. GM vehicles registered in the U.S.A. are covered for 36,000 miles/3 years (whichever comes first). The complete vehicle is covered, including tires, towing to your nearest Chevrolet dealership and cosmetic corrosion resulting from defects. Repairs will be made to correct any vehicle defect, and most warranty repairs will be made at no charge. In addition, rust-through corrosion will be covered for 100,000 miles/6 years (whichever comes first). See dealer for details.

ENGINES. Chevrolet products are equipped with engines produced by GM Powertrain or other suppliers to GM worldwide. The engines in Chevrolet products may also be used in other GM makes and models.

ASSEMBLY. Chevrolet vehicles and their components are assembled or produced by different operating units of General Motors, its subsidiaries or suppliers to GM worldwide. We sometimes find it necessary to produce Chevrolet vehicles with different or differently sourced components than originally scheduled. Since some options may be unavailable when your vehicle is assembled, we suggest you verify that your vehicle includes the equipment you ordered and that, if there were changes, they are acceptable to you.

ONSTAR. OnStar services require vehicle electrical system (including battery), wireless service and GPS satellite signals to be available and operating for features to function properly. OnStar acts as a link to existing emergency service providers. Subscription Service Agreement required. Call 1-888-4ONSTAR (1-888-466-7827) or visit onstar.com for OnStar Terms and Conditions, Privacy Policy, details and system limitations.

A NOTE ON CHILD SAFETY. Always use safety belts and the correct restraint for your child's age and size. Even in vehicles equipped with the Passenger Sensing System, children are safer when properly secured in a rear seat in the appropriate infant, child or booster seat. Never place a rear-facing infant restraint in the front seat of any vehicle equipped with a passenger air bag. See the Owner's Manual and child safety seat instructions for more safety information.

IMPORTANT WORDS ABOUT THIS CATALOG. We have tried to make this catalog comprehensive and factual. We reserve the right, however, to make changes at any time, without notice, in prices, colors, materials, equipment, specifications, models and availability. Specifications, dimensions, measurements, ratings and other numbers in this catalog and other printed materials provided at the dealership or affixed to vehicles are approximations based upon design and engineering drawings, prototypes and laboratory tests. Your vehicle may differ due to variations in manufacture and equipment. Since some information may have been updated since the time of printing, please check with your Chevrolet dealer for complete details. Chevrolet reserves the right to lengthen or shorten the model year for any product for any reason or to start and end model years at different times. Certain vehicle features may lose their usefulness over time due to obsolescence from technological changes. Tahoe Hybrid is available at participating dealers. Unless otherwise noted, all claims based on GM Large Utility segment and latest available competitive information. Excludes other GM vehicles.

SPARE TIRE INFORMATION. There is no standard jack or spare tire in the 2012 Chevrolet Tahoe Hybrid. Your vehicle has a tire sealant and compressor kit that uses a liquid tire sealant to temporarily seal up to a one-quarter-inch puncture in the tread area of the tire. After using the tire inflator kit, it is recommended that you take the tire to an authorized retailer for inspection and repair as soon as possible, but at least within 100 miles of driving. The tire sealant cannot seal and inflate sidewall damage, punctures larger than one-quarter inch, or a tire that has unseated from the wheel. The sealant can only be used on one tire and for one time before its expiration date.

FLEET ORDERS. Some standard content may be deleted on fleet orders. See dealer for details.

OWNER SERVICES. Chevrolet is committed to enhancing the ownership experience through a wide array of programs. For more information about 24-hour Roadside Assistance, Courtesy Transportation, Customer Assistance Center, Chevy Safety, marketing and incentives, visit chevy.com.

GMMOBILITY.COM (1-800-323-9935). GM Mobility™ offers financial assistance for eligible adaptive equipment to make automotive travel easier for persons with disabilities or special transportation needs. To learn more about special GM Mobility offers, visit gmmobility.com.

CHEVROLET OWNER CENTER (GMOWNERCENTER.COM/CHEVY). Register your vehicle with the Chevrolet Owner Center and receive benefits such as online access to your vehicle Owner's Manual, maintenance schedule reminders, service history tracking, warranty and service information, safety information, special offers and privileges, and news and events.

GMCARDMEMBERSERVICES.COM. Did you know about the family of reward credit cards that can help you get a great deal on a new GM car, light-duty truck, SUV or crossover? With a GM reward card, you accrue earnings on every credit card purchase to use toward the purchase or lease of an eligible new GM vehicle. With three cards to choose from, you're sure to find one that suits you best.

GM, the GM Logo, Chevrolet, the Chevrolet Logo, and the slogans, emblems, vehicle model names, vehicle body designs and other marks appearing in this catalog are the trademarks and/or service marks of General Motors, its subsidiaries, affiliates or licensors. ©2011 OnStar. All rights reserved. SiriusXM and all related marks and logos are trademarks of SiriusXM Radio Inc. and its subsidiaries. The Bluetooth word mark is a registered trademark owned by Bluetooth SIG, Inc., and any use of such mark by Chevrolet is under license. ©2011 General Motors. All rights reserved. October 2011

OWNERSHIP EXTRAS



chevy.com/warranty



ACCESSORIES

chevy.com/accessories

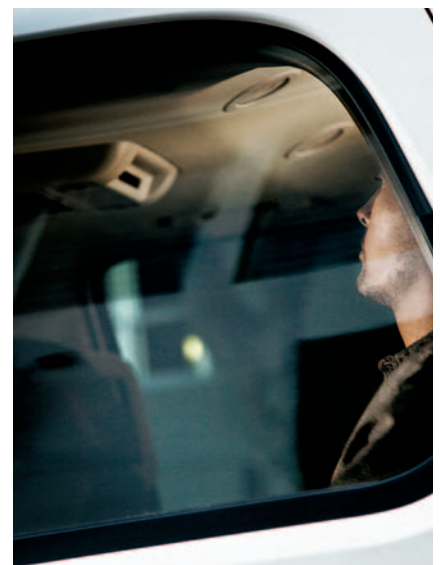


onstar.com



SATELLITE RADIO

siriusxm.com





Chevy Runs Deep