

1985 CHEVROLET

Celebrity

FREDERIC AUTO COMPANY
Highway 35 South & W
Frederic, Wis. 54837



CELEBRITY.
PRECISION, PERFORMANCE,
STYLE.

Precision. A bold word in our high-tech world of computers, lasers and space shuttles.

Yet a word you will feel very good about once you have experienced Celebrity for 1985.

It's a smoothness of the steering that speaks quality machining. An even engine response that makes every speed change a pleasure. An isolation from road noise and vibration.

Precision. You'll find it in the supple suspension that delivers nimble agility. The feeling of great structural strength over rough roads. The riding and seating comfort that invites long-distance travel.

This is Celebrity. A front-drive Chevrolet sized the

way today's cars ought to be. With room for up to six adults in Celebrity Sedan with the available front bench seat. A large, flat trunk designed to accommodate everyone's luggage. And your choice of 4-cylinder or optional V6 performance engines, standard touring or Eurosport suspensions, and classic or Eurosport style.



Celebrity Eurosport Sedan, above and on cover.

**CELEBRITY EUROSport. NEW GAS-CHARGED
SUSPENSION. AVAILABLE MULTI-PORT FUEL-INJECTED V6.**

**CELEBRITY
PRECISION.**

You should see it first early in the morning, when everything is fresh and clear.

The unmistakable wedge tapering to a blackout grille. Mat black body hardware. Hot color stripe. Flaming red engine numerals. Big steel-belted radials waiting to grip the road.

But then what did you expect from a Celebrity fully optioned in the Eurosport mode? (See page 17 for package details.)

Turn the key and find out. Six fuel injectors pressurize against their individual ports as tuned runners ram air into fast-burn combustion chambers 2.8 liters strong.

You hear the muted whirring of balanced machinery. Ignited by the precision spark of a computer 8k smart.

As the engine idles, you feel almost nothing thanks to a hydraulically damped engine mount. Just your pulse pounding through your wrists as your hands



grasp the thick padding of the Sport steering wheel.

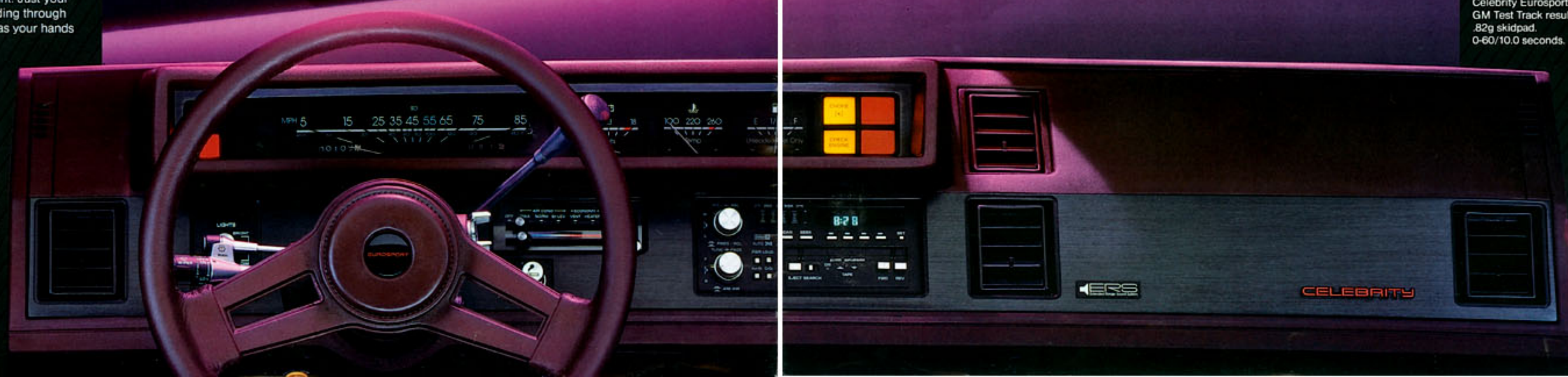
Your whole day is before you. The road you'll take. And who you'll choose to travel with.

By noon you're where you want to be. No other car has a suspension tuned exactly like this. Plus gas-charged struts and shocks to settle the road. Rack-and-pinion power steering to read it. And front-drive confidence to let you handle it.

Heads turn sharply as you pass by.

At dusk, you find your excitement growing in the softly fading light. As your spirit prepares to steal into the night.

Celebrity Eurosport Coupe.
GM Test Track results:
.82g skidpad.
0-60/10.0 seconds.



**CELEBRITY'S AVAILABLE 2.8L MULTI-PORT FUEL-INJECTED V6.
A NEW STANDARD FOR SMOOTHNESS AND
RESPONSE.**

Open the hood and the first thing you see is the aluminum air plenum gleaming in the light. Six tuned runners stand ready to ram pulsed charges of air into individual intake ports.

Turn the key and six injectors pressurize against engine-synchronized valves. This is engine technology so sophisticated that an electronic control module continually measures air mass, altitude, ambient temperature, barometric pressure and humidity. Then adjusts the pulse duration of six Bosch injectors with computer accuracy.

Adding to the smooth operation is a sophisticated new hydraulic engine mount so effective you may not feel the engine running even at idle.

The benefits you get from Celebrity's Multi-Port Fuel Injection system (MFI) extend far beyond impressive horsepower and torque gains. You also get features designed for:

- Instant throttle response at all speed ranges.
- Impressive smoothness and power at any speed or elevation, in any weather.
- Improved breathing for power at high RPM.
- Dependable operation: The only moving parts are the throttle plate, idle controls and the electronic fuel injectors. Everything else is solid-state circuitry sealed from dirt, dust and moisture.
- Plus the benefits of Electronic Fuel Injection (EFI), listed right.



Acceleration (sec.)*		¼ mile
Engine	LB6 2.8L V6 with MFI	7.1 8.6 10.0 17.1 sec.
Transmission	Automatic 3-speed	
Tires	P195/70R-14	
		0-50
		0-55
		0-60

*GM Test Track results after subtraction of 0-1 ft. time to follow drag-strip correction procedure.



- 2.5 Liter L4 with EFI.**
Like MFI, Celebrity's standard 2.5 Liter L4 engine with EFI is designed for:
- Simple "turn-key" starting, hot or cold, without flooding.
 - Quick engine response.
 - Self-adjusting idle to help reduce stalling.
 - No stall on quick braking.
 - More precise air/fuel mixture with automatic adjustment for optimum performance between service intervals.
 - Automatic adjustment for altitude and weather.
 - Reduced maintenance (no choke, accelerator pump or carburetor adjustment required).

Celebrity's standard 2.5 Liter L4 with Electronic Fuel Injection features the new hydraulic engine mount. And the on-board computer, controlling engine operations.

- And positive fuel shutoff to help prevent "run-on" after the ignition is switched off.

Transmissions.
Four-speed overdrive manual is standard; 3-speed automatic with "no-slip" torque lockup is available. V6 gas engines available with 4-speed automatic overdrive transmission. Performance axle ratios, standard on Eurosport models, are available on all automatics.

**CELEBRITY SEDAN. PRECISION,
DRIVING COMFORT AND LUXURY. ROOM
FOR UP TO SIX.**

There is something very special about a Celebrity.

An eye-catching style that only the sensuous lines of advanced aerodynamics could create.

A level of smoothness and riding comfort that has been refined for 1985 by some of the best automotive brains in the world.

A nimble response in a car that feels as solid as a bank vault.

We designed Celebrity, using a technique called Finite Element Analysis. This enabled our engineers to combine low weight with great structural strength. And give Celebrity Sedan room for up to six with the optional front bench seat.



Celebrity's power choice reflects Eurosport excitement: Electronic Fuel Injection 2.5 Liter engine standard; 2.8 Liter V6 or Multi-Port Fuel Injection V6 optional. Plus a 4.3 Liter Diesel V6 option (N.A. Eurosport). Each damped by a new hydraulic engine mount so effective you may not be able to feel the engine idle.

Its suspension has been refined by engineers who helped develop the redesigned Corvette. Anyone will feel at home with Celebrity's reassuring front-drive traction.

But it's the superb riding comfort that will make you choose this car. And the smooth driving response only advanced technology could create.



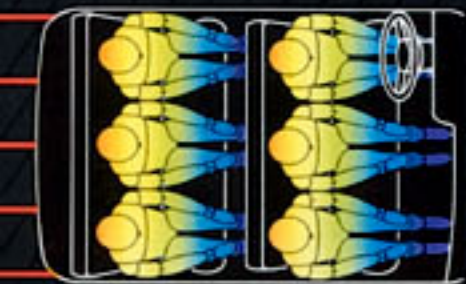
INSIDE CELEBRITY. A COMPLETE DRIVING ENVIRONMENT SUPPORTS YOU.

Generous seating room is something you'll appreciate every day you drive Celebrity. Computer-aided design has helped make it spacious. Wide door openings mean easy entry and exit. And Celebrity's large glass area gives you an excellent view of the countryside.

Celebrity's orthopedically designed seating is formed of high-resilience full foam supported by springs tuned to reduce road vibration and fatigue. The front bench and available 45/45 seats feature a fold-down center armrest. Reclining bucket seats are optional, shaped to hold the driver and passenger comfortably in place.

The soft-grip steering wheel warms quickly in cold weather. A fingertip away you'll find the headlamp dimmer, washer/wipers, turn signals, even the available electronic speed control with speed adjustment feature, on a single control.

It's all part of the Chevrolet commitment to create a complete driving environment that supports you in style.



Six-passenger seating available.

Celebrity CL Custom Bench Interior.

CELEBRITY COUPE.
PRECISION WITH A PERSONAL TOUCH.

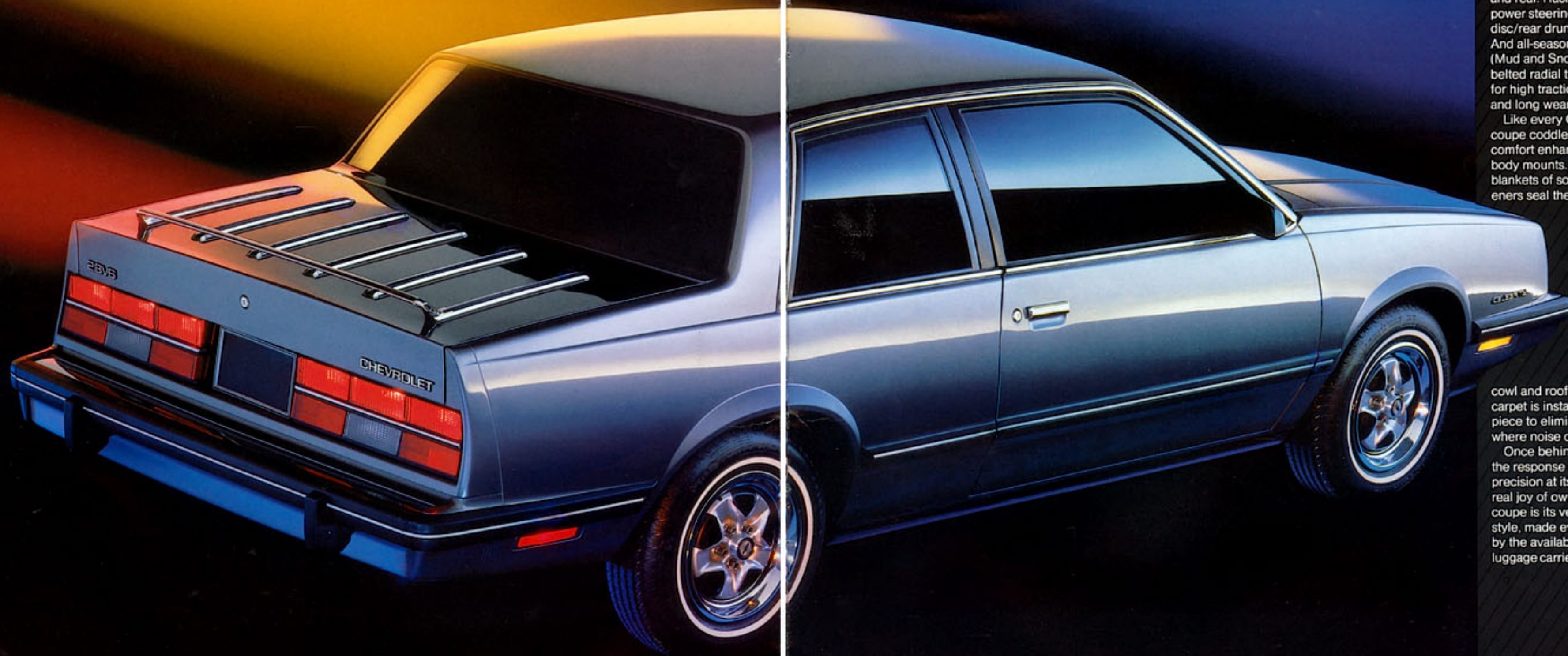
This is the Celebrity that was designed to take special care of just you.

Its precise driving comes from stabilizer bars, front and rear. Rack-and-pinion power steering. Power front disc/rear drum brakes. And all-season M+S-rated (Mud and Snow), steel-belted radial tires designed for high traction, low noise and long wear.

Like every Celebrity, this coupe cuddles you in comfort enhanced by tuned body mounts. Thick blankets of sound deadeners seal the floor, doors,

cowl and roof. Even the carpet is installed in one piece to eliminate seams where noise could enter.

Once behind the wheel, the response is Celebrity precision at its best. But the real joy of owning this coupe is its very personal style, made even sportier by the available deck-lid luggage carrier shown here.



**CELEBRITY WAGON. ROOM FOR UP TO EIGHT.
DRIVING SO PRECISE YOU WON'T BELIEVE
IT'S A WAGON.**

Even wagons with Europe's most prestigious names don't have the flair of Celebrity Eurosport. Lithe and powerful-looking, surrounded by a hot red laser stripe, it stands ready to devour the miles with purposeful ease.

The secret of its excitement? Eurosport combines the precision of Celebrity with gas-charged MacPherson struts and shock absorbers. Plus, you get big stabilizer bars, front and rear. Power front disc brakes. Fast-ratio power rack-and-pinion steering. And Eagle GT's are available to satisfy your driving pleasure.

Other Celebrity Wagons, including our new Estate Package, feature suspensions tuned for even more driving comfort.

Whichever version you choose, no other front-drive wagon gives you more room than Celebrity. With seating for six in standard form. And room for eight in the three-seat model. All that seating comfort opens up to 75.1 cubic feet of cargo area with rear seat-backs folded down. And the available Custom Interior features split-folding second seat-backs.

Take your choice of engines. The smooth-



Celebrity Wagon's CL Custom Interior sits three across and features a fold-down center armrest.

Celebrity Eurosport Wagon, foreground; Celebrity Estate Wagon, above.

running standard 2.5 L4 with Electronic Fuel Injection, the 2.8 Liter V6, new Multi-Port Fuel Injection V6. Or the 4.3 Liter Diesel V6 options (N.A. Eurosport).

Whichever Celebrity you buy, you get a computer-designed body structure that drives so precisely you won't believe it's a wagon.



FEATURES AND OPTIONS

White
Silver Met.
Medium Gray Met.
Black
Light Blue Met.*
Dark Blue Met.
Light Green Met.*
Medium Green Met.*
Light Brown Met.
Cream Beige*
Medium Brown Met.*
Dark Maroon Met.
Silver Met.†
Medium Gray Met.
Black
Silver Met.
Dark Blue Met.*
Light Blue Met.
Light Brown Met.*
Medium Brown Met.
Dark Maroon Met.*
Silver Met.†
Black

*NA Eurosport.
†Eurosport only.

Interiors

Sedan and Coupe

		Maroon	Gray	Green**	Blue	Saddle
• Std. 2-pass. front bench seat with center armrest	Cloth (Std.)	■	■	■	■	■
	Vinyl (Opt.)	■	■	■	■	■
• Opt. 3-pass. front bench seat with center armrest*	Vinyl	■	■	■	■	■
	Cloth	■	■	■	■	■
• Optional 45/45 front seat**	Cloth	■	■	■	■	■
• Optional reclining front bucket seat	Cloth	■	■	■	■	■
• CL Custom Interior with 2- or 3-passenger front bench seat* and center armrest or optional 45/45 front seat	Cloth	■	■	■	■	■
	Vinyl	■	■	■	■	■

Wagon

		Maroon	Gray	Green**	Blue	Saddle
• Standard 3-passenger front bench seat with center armrest*	Vinyl (Std.)	■	■	■	■	■
	Cloth (Opt.)†	■	■	■	■	■
• Optional 45/45 front seat**	Cloth	■	■	■	■	■
• Optional reclining front bucket seat	Cloth	■	■	■	■	■
• Optional CL Custom Interior with 3-pass. front bench seat or 45/45 front seat (Cloth only)	Vinyl	■	■	■	■	■
	Cloth†	■	■	■	■	■

*NA coupe and Eurosport. †Vinyl-trimmed 3rd seat on 3-seat wagon model.
**NA Eurosport.



All-season, steel-belted radials meet M+S requirements.



Eurosport features gas-charged struts and shocks for precise wheel control.



Electronic speed control is available with resume and speed adjustment features.

Optional Equipment

Appearance and Protection

- Custom Two-Tone paint (includes exterior molding package)
- Body pin striping
- Bumper guards
- Color-keyed floor mats, front and/or rear
- Door edge guards
- Exterior molding package (includes rocker panel and wheel opening moldings)
- High-level stop-lamp (sedan and coupe only)
- Mirrors: left-hand remote-control outside; Sport left-hand remote and right-hand manual; Sport twin remote
- Tinted glass.

Comfort and Convenience

- Automatic transmissions
- Air conditioning
- Electronic speed control with resume and speed adjustment feature
- Auxiliary lighting (includes luggage or cargo and glove box compartment lamps, underhood, courtesy and ashtray lamps, headlamp-on reminder)
- CL Custom Interior with front bench seat or 45/45 split front seat, rear door dome lamp switches, special instrument panel trim, custom door panels, plus

exterior "CL" identification

- Comfortilt steering wheel
- Console (requires 45/45 or bucket seats)
- Deluxe luggage compartment trim
- Digital clock (available only with radio equipment)
- Dual-note horns
- Electric rear window defogger
- Gage Package with trip odometer
- Intermittent windshield wiper system
- Power door lock system
- Power trunk release
- Power windows
- Reclining driver and passenger seat-backs (NA bench seat, standard on bucket seats)
- Six-way power seat
- Deck-lid luggage carrier (chrome, black with Eurosport Package; interim availability).

Options exclusively for wagons:

- Cargo area security package
- Deluxe rear compartment decor
- Inflatable rear shock absorbers
- Power tailgate release
- Rear quarter vent window (included with 3-seat model)
- Rear window air deflector
- Rear window wiper/washer system
- Roof carrier (chrome; black with Eurosport Package)
- Split-folding rear seat-back
- Swing-out tailgate window.

Power Teams

Engines	Ordering Code	Engines	Manual Transmission		Automatic Transmissions	
			4-Spd.	3-Spd.	w/OD	
2.5 Liter L4 w/EFI†	LR8	S	S	0	NA	
2.8 Liter 2-Bbl. V6‡	LE2	0	NA	0	0	
2.8 Liter V6 w/MFI**	LB6	0	NA	0	0	
4.3 Liter Diesel V6‡	L77	0	NA	0	NA	

*Produced in U.S., Canada or Mexico.
S: Standard. O: Optional. NA: Not Available.
†Electronic Fuel Injection. ‡NA California. ‡Multi-Port Fuel Injection.
*NA on Eurosport.



Celebrity's 16.2-cubic-foot luggage area is designed to let you travel across the country in style.



Performance

- Diesel engine block and fuel line heater
- Heavy-duty battery
- Heavy-duty cooling
- Heavy-duty front and rear suspension (NA Eurosport).

Special Packages

- Celebrity Classic Package (includes padded vinyl top and "Celebrity Classic" nameplates)
- Celebrity Eurosport Package includes special blackout exterior and instrument panel trim, red exterior accent stripe and badges, Sport steering wheel, fast-ratio power

steering, special F41 Sport Suspension with sport-tuned springs, gas-charged struts and shocks and large stabilizer bars, performance axle ratio, P195/75R-14 blackwall all-season, steel-belted radials on Rally Wheels

Celebrity Wagon Estate Package (includes simulated wood-grain exterior applique with wheel opening moldings).

Audio Equipment

- GM-Delco radio equipment: (All radios include dual front speakers; all stereos also include dual rear speakers.)
- AM/FM radio
 - Dual rear speakers (included with stereo)
 - Electronically tuned receiver, ETR,™ AM/FM stereo
 - ETR AM/FM stereo radio with clock
 - ETR AM/FM stereo radio with seek/scan, cassette player and clock
 - ETR AM stereo/FM stereo radio with seek and scan, cassette player with search and repeat, clock, graphic equalizer and extended range sound system
 - Dual coaxial front and dual extended range rear speakers (included with AM stereo/FM stereo; not available with monaural radios).

Tires

- (All steel-belted radial ply)
- P185/75R-14 blackwall* (coupe, sedan and wagons, NA Eurosport and diesel)
 - P185/75R-14 white-stripe* (available all models except Eurosport and diesel)
 - P195/75R-14 blackwall* (std. with diesel engine, with Eurosport Package and required with aluminum wheels)
 - P195/75R-14 white-stripe* (with diesel engine only)
 - P195/70R-14 Eagle GT blackwall (available with Eurosport Package only).
- *All-season tread.

Wheel Equipment

- Rally Wheels (included with Eurosport Package)
- Aluminum wheels (require P195/75R-14 tires; P195/70R-14 with Eurosport Package)
- Sport wheel covers (except with Eurosport Package)
- Wire wheel covers with locking package (except with Eurosport Package).

Body-hugging bucket seats and center console are available to support your driving style.

OPTIONS



Power door locks are among Celebrity's many options.



The power trunk opener switch is conveniently located to the left of the steering column.



Tailgate wiper/washer quickly clears wagon's rear window.

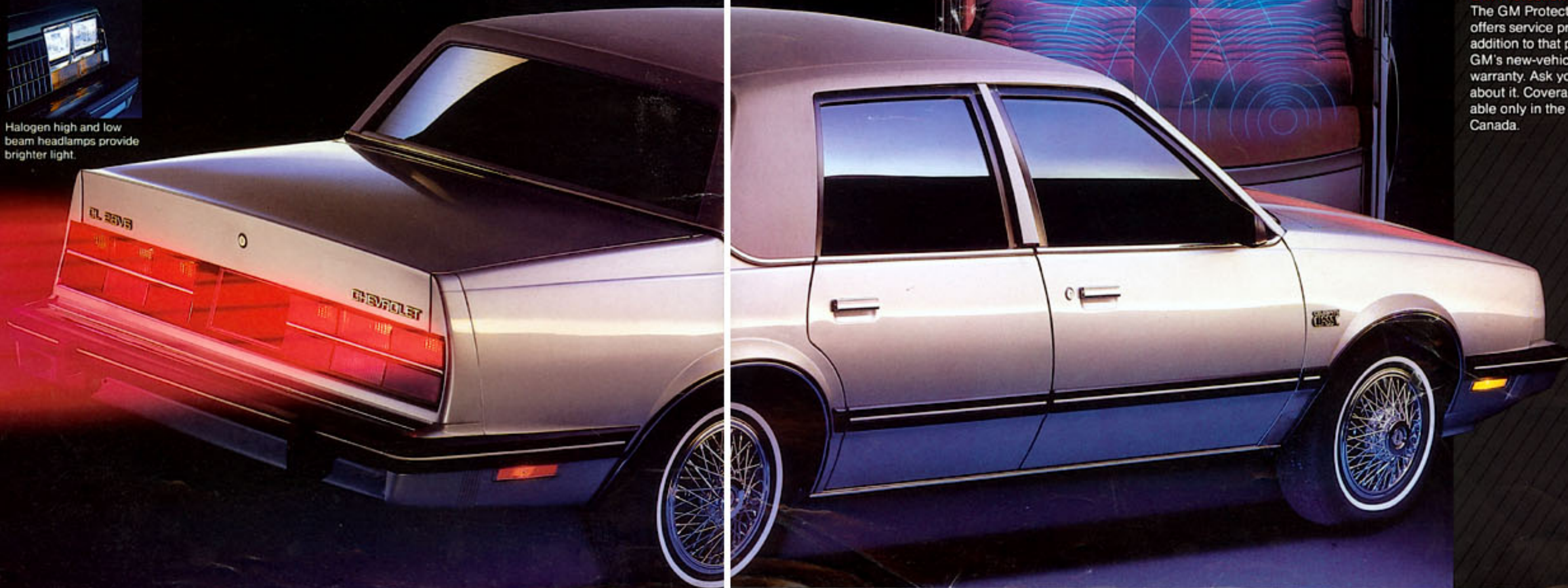


Halogen high and low beam headlamps provide brighter light.



Celebrity's new high-level stop-lamp stays clean and bright and lights up with the tail lamps when you step on the brake.

Celebrity Classic Package features formal padded vinyl top and "Celebrity Classic" nameplates. Wire wheel covers, whitewall tires, electric rear window defogger and twin remote Sport mirrors are among the options that add further distinction and convenience.



Celebrity's top-of-the-line electronically tuned radio features 4-speaker AM stereo/FM stereo with seek and scan, electronic station locking, graphic equalizer, stereo cassette player with search and repeat, and quartz LCD clock. Front coaxial speakers and rear extended range speakers are included, plus balance controls right/left and front/rear. This 360° sound system is so impressive you may find you enjoy your favorite cassettes more in your Celebrity than on your home stereo.

GM Protection Plan. The GM Protection Plan offers service protection in addition to that provided by GM's new-vehicle limited warranty. Ask your dealer about it. Coverage available only in the U.S. and Canada.

FACTS

Safety Features

Occupant Protection

- Manual lap/shoulder belts for driver and right front passenger (driver's side includes visual and audible warning system)
- Manual lap belts at each rear seat position (and center front, when applicable)
- Energy-absorbing steering column
- Energy-absorbing instrument panel
- Energy-absorbing tops, front seats
- Laminated safety windshield glass and tempered safety side and rear window glass
- Safety interlocking door latches
- Passenger-guard inside door lock handles
- Inertia-locking, folding front seat-backs
- Safety armrests
- Safety-strength seat attachments
- Head restraints, driver and right front passenger (adjustable).

Accident Avoidance

- Side marker lights and reflectors
- Parking lamps that illuminate with headlamps
- Four-way hazard warning flasher
- Back-up lights
- Directional signal control and lane-change feature
- Windshield defroster, washer and dual-speed wipers
- Inside rearview mirror with vinyl-bonded glass
- Outside left rearview mirror
- Brake system with dual master cylinder and warning light
- Starter safety switch
- Dual-action hood latch system
- Low-glare finish on instrument panel top, inside windshield moldings, wiper arms/blades, metallic steering wheel surfaces
- Illuminated heater and defroster controls
- Tires with built-in tread-wear indicators.

Anti-Theft

- Audible reminder for ignition key removal
- Anti-theft steering column lock
- Visible vehicle identification number.

Exterior Features

	Coupe/ Sedan	Wagon
Black, flush-mounted windshield and rear window moldings	\$	\$
Black side window frames	\$	\$
Black windshield wipers	\$	\$
Body side moldings, drip and belt moldings	\$	\$
Bright grille and headlamp bezels	\$	\$
Chrome bumpers with black rub strips	\$	\$
Corrosion Protection:		
• Anti-chip protective coating applied to lower body	\$	\$
• Extensive use of corrosion-resistant precoated steels, galvanized steel and aluminum	\$	\$
Full wheel covers	\$	\$

Interior Features

AM push-button radio with dual front speakers*	\$	\$
Color-keyed, one-piece acoustical carpeting	\$	\$
Front bench seat with folding armrest and open-storage bin	\$	NA
Glove compartment lock	\$	\$
Molded fiberglass-foam acoustical headliner	\$	\$
Multi-function switch for dimmer, washer/wiper, turn signals	\$	\$
Power ventilation system	\$	\$
Roll-down windows in all doors	\$	\$
Side window defoggers	\$	\$
Theft-deterrent sliding door locks	\$	\$
Three-passenger front seat with folding armrest	0†	\$

Mechanical Features

Delco-tron generator with solid-state regulator	\$	\$
Disc brake audible wear sensors	\$	\$
Double-panel door, hood and deck-lid or tailgate construction	\$	\$
4-speed manual transmission with overdrive	\$	\$
Front drive	\$	\$
Front stabilizer bar	\$	\$
Full unitized body construction	\$	\$
MacPherson-strut front suspension	\$	\$
Maintenance-free wheel bearings	\$	\$
Power front disc/rear drum brake system	\$	\$
Rear suspension track bar for precise lateral axle control	\$	\$

S: Standard. O: Optional. NA: Not Available. *May be deleted for credit. †NA on coupe.

Dimensions (in.)	Sedan	Coupe	Wagon
Wheelbase	104.9	104.9	104.9
Length (overall)	188.3	188.3	190.8
Width (overall)	69.3	69.3	69.3
Height (loaded)	53.9	54.3	54.3
Head Room—Front	38.6	38.6	38.6
Head Room—Rear	38.0	37.9	38.8
Leg Room—Front	42.1	42.1	42.1
Leg Room—Rear	36.4	36.1	35.5
Hip Room—Front	52.4	52.3	52.4
Hip Room—Rear	52.7	53.6	52.7
Shoulder Room—Front	56.2	56.3	56.2
Shoulder Room—Rear	56.2	57.1	56.2
Luggage/Cargo Capacity (cu. ft.)	16.2	16.2	75.1
Fuel Tank Capacity (gals.)	15.7*	15.7*	15.7*

*4-cylinder EFI and MFI V6; 16.4 gals. with carbureted V6 engine; 15.6 gals. with diesel engine.

Let's get it together... buckle up.

Every new 1985 Celebrity delivered by a Chevrolet dealer in the United States comes with a one-year, \$10,000 seat belt insurance certificate from MIC General Insurance Corporation at no additional charge. \$10,000 will be paid to the estate of any occupant who suffers fatal injuries as a result of an accident involving that vehicle while wearing a GM seat belt. Buckle up every time you drive.

Important: A word about this catalog.

We have tried to make this catalog as comprehensive and factual as possible. However, since the time of printing, some of the information may have been updated. Also, some of the equipment shown or described throughout this catalog is available at extra cost. Your dealer has details and, before ordering, you should ask him to bring you up to date. The right is reserved to make changes at any time, without notice, in prices, colors, materials, equipment, specifications and models. Check with your Chevrolet dealer for complete information.

A word about updated service information.

Chevrolet regularly sends its dealers useful service bulletins about Chevrolet products. Chevrolet monitors product performance in the field. We then prepare bulletins for servicing our products better. Now you can get these bulletins, too. Ask your dealer. To get ordering information, call toll-free 1-800-551-4123.

A word about assembly, components and optional equipment in these Chevrolets.

The Chevrolets described in this catalog are assembled at facilities operated by General Motors or GM of Canada. These vehicles incorporate thousands of different components produced by car groups and various component divisions of General Motors and by various suppliers to General Motors. From time to time during the manufacturing process, it may be necessary, in order to meet public demand for particular vehicles or equipment, or to meet federally mandated emissions, safety and fuel economy requirements, or for other reasons, to produce Chevrolet products with different components or differently sourced components than initially scheduled. All such components have been approved for use in Chevrolet products and will provide the quality performance associated with the Chevrolet name.

With respect to extra-cost optional equipment, make certain you specify the type of equipment you desire on your vehicle when ordering it from your dealer. Some options may be unavailable when your car is built. Your dealer receives advice regarding current availability of options. You may ask the dealer for this information. GM also requests the dealer to advise you if an option you ordered is unavailable. We suggest that you verify that your car includes optional equipment you ordered or, if there are changes, that they are acceptable to you.

A word about engines.

Chevrolets are equipped with engines produced at facilities operated by GM car groups, subsidiaries or affiliated companies worldwide.



Live Today's
Chevrolet