

¹ ⁹ ⁸ ²
MALIBU CLASSIC



RESTAURANT
D'ARGENT



On cover, Malibu Classic Sedan shown in Dark Blue.

Malibu Classic Sedan shown in Custom Two-Tone Beige and Light Brown.

MALIBU CLASSIC. A BEAUTIFUL CAR AND A BEAUTIFUL BUY.

There's no mistaking the new Malibu Classic for 1982. It's been given a whole new personality with a bold new grille design uniquely accented by dual rectangular headlights. Inside, a beautifully styled environment is even more in evidence. There's a distinctive instrument panel with simulated

wood-grain accents and round instruments clustered in easy-to-read fashion around the steering column. A luxurious new cloth-upholstered notchback front bench seat now includes a folding center armrest standard.

Yet for all its new beauty, Malibu Classic still has its smartly practical

side with proven V6 performance, six-passenger seating, 16.6 cubic feet of trunk space and a trim size for ease of parking and comfortable driving.

NEW DIESEL POWER. The special news in Malibu Classic's performance department is the debut of optional diesel power. The

diesel's high-compression ratio provides more power with less fuel than a gasoline engine. What's more, maintenance is simpler because there are no spark plugs, distributor or carburetor to replace or service.

But new improvements don't stop with diesel. Malibu Classic has also

added a standard automatic transmission, a new low-drag disc brake design and an improved windshield washer system.

While offering new features, Malibu Classic also retains the standards that have made it so popular. Standards like power steering, a Full Coil suspension

system, front stabilizer bar, cushioned body mounting system, radial tires and power front disc brakes. Plus extensive anti-rust treatments.

Malibu Classic. A beautiful buy any way you look at it.

IMPORTANT: A WORD ABOUT THIS CATALOG. We have tried to make this catalog as comprehensive and factual as possible and we hope you find it helpful. However, since the time of printing, some of the information you will find here may have been updated. Also, some of the equipment shown or described throughout this catalog is available

at extra cost. Your dealer has details and, before ordering, you should ask him to bring you up to date.

The right is reserved to make changes at any time, without notice, in prices, colors, materials, equipment, specifications and models. Check with your Chevrolet dealer for complete information.



Malibu Classic Custom notchback bench seat with folding inter armrest.



Malibu Classic instrument panel.

MALIBU CLASSIC INTERIOR. RELAX AND ENJOY.

If there was ever anywhere you could just sit back and relax, it's inside the Malibu Classic. With standard features such as cushioned, full foam notchback front bench seat with folding center armrest, elegant cut-pile carpeting, cushioned cloth headliner and a special sound package.

Shown left is the optional Custom interior with supple knit fabric and vinyl door pull straps.

The Malibu Classic Sedan

standard notchback bench seat, shown below in rich-looking cloth, is also available in vinyl. The vinyl seat is standard on Malibu Classic wagon. A 55/45 bench seat is also available in cloth or vinyl.

Even the instrument panel, with the attractive simulated wood-grain applique, adds to the elegant Malibu Classic interior. And for your enjoyment, you'll find a host of comfort and convenience options from which to choose on page 7.



Malibu Classic standard notchback bench seat with folding center armrest.

INTERIOR COLORS

MALIBU CLASSIC CUSTOM INTERIOR (Sedan only)

		Dark Blue	Camel	Silver Gray	Jade	Redwood
Optional notchback front bench seat with folding center armrest	Custom Cloth	•	•	•	•	•
MALIBU CLASSIC INTERIOR						
Standard notchback bench seat with folding center armrest	Cloth†	•	•	•	•	•
	Vinyl*	•	•	•	•	•
Optional 55/45 split front bench seat with folding center armrest	Cloth	•	•	•	•	•
	Vinyl	•	•	•	•	•

*Std. on wagon, opt. on sedan. †Opt. on wagon.

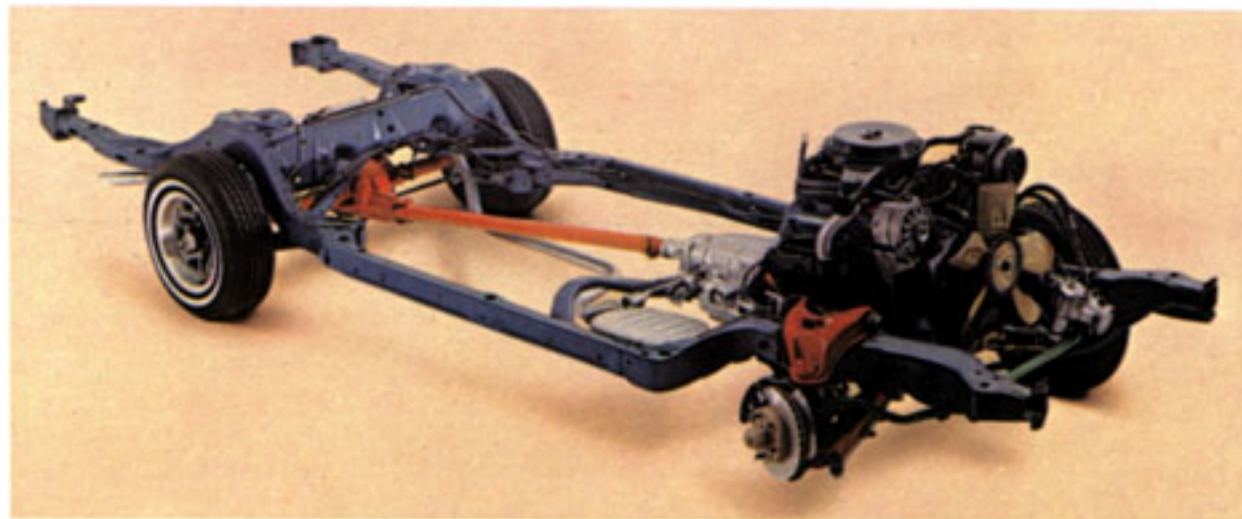
EXTERIOR COLORS

	Dark Blue	Camel	Silver Gray	Jade	Redwood
Beige	•	•	•	•	•
Charcoal (Metallic)	•	•	•	•	•
Dark Blue (Metallic)	•	•	•	•	•
Light Blue (Metallic)	•	•	•	•	•
Dark Jade (Metallic)	•	•	•	•	•
Light Jade (Metallic)	•	•	•	•	•
Light Brown (Metallic)	•	•	•	•	•
Redwood (Metallic)	•	•	•	•	•
Light Redwood (Metallic)	•	•	•	•	•
Silver Gray	•	•	•	•	•
Silver (Metallic)	•	•	•	•	•
White	•	•	•	•	•

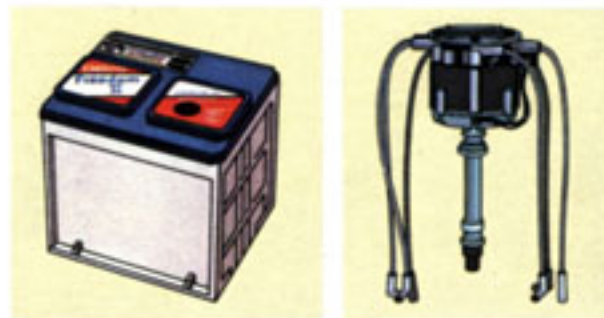
OPTIONAL CUSTOM TWO-TONE COLORS (* Metallic)

Dark Blue*	Beige	Redwood*	Silver Gray
Light Blue*	Light Brown*	Light Redwood*	Charcoal*
Dark Blue interior	Camel interior	Redwood interior	Silver Gray interior

MALIBU CLASSIC STANDARD FEATURES



Full-Perimeter Frame. Helps provide strength and torsional rigidity. Fourteen strategically located rubber-cushioned body mountings help isolate road noise and vibration for a smooth, quiet ride.



Delco Freedom II Battery. Designed for maintenance-free performance, Freedom II delivers more efficient starting power, more staying power and more resistance to vibration damage than the original Delco Freedom battery.

High Energy Ignition. A solid-state system that eliminates points and ignition condenser and delivers a high-voltage spark that helps extend time between tune-ups.



Large Trunk Capacity. Generously sized trunk has almost 17 cubic feet of space that absorbs suitcases for vacation travel and bulky objects for weekend hauling.

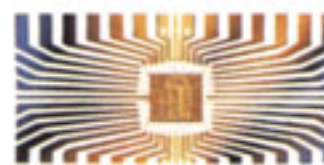
NEW STANDARD FEATURES

- Redesigned grille with quad rectangular headlights
- Notchback bench seat with folding center armrest
- Automatic transmission
- Low-drag front disc brake design
- Improved windshield washer system

MORE STANDARD FEATURES

- Power front disc/rear drum brakes
- Disc brake audible wear sensors
- Power steering
- Delcotron generator with built-in solid-state regulator
- Steel bumpers with high-strength reinforcements
- Visible ball joint wear indicators
- Coolant recovery system
- Fiberglass-belted radial ply tires with high pressure recommendations
- Early Fuel Evaporation system
- Full Coil suspension system with computer-selected springs and front stabilizer bar

- Dual horns
- Double-panel door, hood and deck lid or tailgate construction
- Special sound package
- Extensive anti-corrosion treatments
- Dual-mode flow-through ventilation system
- Hide-A-Way dual-speed electric windshield wipers
- Inner fenders, front and rear, for corrosion protection
- Color-keyed seat and shoulder belts
- Compact spare tire
- Full wheel covers
- Side-lift frame jack
- Molded full foam seat construction
- Foam-backed cloth headliner
- Color-keyed cut-pile carpeting
- Day/night rearview mirror
- Color-keyed steering column and steering wheel
- Glove compartment lock and light
- Vinyl door pull straps



COMPUTER COMMAND CONTROL

This sophisticated, thoroughly tested on-board computer continuously monitors gasoline engine functions. It also fine-tunes engine performance, under all normal operating conditions, as you drive. Air-fuel mixtures are constantly adjusted to driving conditions, and the system helps compensate for altitude, barometric pressure and temperature changes.

Another benefit of Computer Command Control is that it is covered by the 5-year/50,000-mile emissions system warranty. Ask your dealer for details.

A WORD ABOUT ENGINES

Some Chevrolets are equipped with engines produced by other GM divisions, subsidiaries, or affiliated companies worldwide. See your dealer for details.

DIMENSIONS (Inches)

Exterior	Sedan	Wagon
Wheelbase	108.1	108.1
Length (overall)	192.7	193.4
Width (overall)	72.3	71.9
Height (loaded)	55.7	55.8
Fuel Tank Capacity (gals.)	18.1	18.2

Interior	Sedan	Wagon
Head Room — Front	38.5	38.8
Head Room — Rear	37.6	38.8
Leg Room — Front	42.8	42.8
Leg Room — Rear	38.0	35.5
Hip Room — Front	52.2	52.2
Hip Room — Rear	55.6	55.6
Shoulder Room — Front	56.7	56.7
Shoulder Room — Rear	57.1	57.1
Usable Luggage Capacity (cu. ft.)	16.6	—
Floor Length — Front Seat to Tailgate	—	81.2
Width Between Wheelhousings	—	43.6
Total Cargo Volume (cu. ft.)	—	72.4

LONG RECOMMENDED SERVICE INTERVALS*

Engine Oil	12 months or 7,500 miles**
Oil Filter	12 months or 7,500 miles, every 15,000 miles thereafter**
Spark Plugs†	Up to 30,000 miles
Chassis Lubrication	12 months or 7,500 miles
Automatic Transmission Fluid Change	Every 100,000 miles

**5,000 miles with diesel. †Except diesel engine.

*See Owner's Manual for conditions requiring more frequent intervals.

MALIBU CLASSIC POWER TEAMS

Engine	Ordering Code	Displacement (cubic inches)	Engine Availability		Auto. Transmission	
			Sedans	Wagons	Sedans	Wagons
ALL STATES EXCEPT CALIFORNIA						
3.8 Liter 2-Bbl. V6 (A)	LC3	229	Std.	Std.	Std.	Std.
4.4 Liter 2-Bbl. V8 (B)	L39	267	EC	EC	Std.	Std.
5.0 Liter 4-Bbl. V8 (B)	LG4	305	NA	EC	NA	Std.
4.3 Liter Diesel V6 (D)*	LT6	260	EC	NA	Std.	NA
5.7 Liter Diesel V8 (D)	LF9	350	EC	EC	Std.	Std.
CALIFORNIA ONLY (with California Emissions Requirements)						
3.8 Liter 2-Bbl. V6 (C)	LD5	231	Std.	Std.	Std.	Std.
5.0 Liter 4-Bbl. V8 (B)	LG4	305	NA	EC	NA	Std.
5.7 Liter Diesel V8 (D)	LF9	350	EC	EC	Std.	Std.

Std. — Standard NA — Not Available EC — Optional at Extra Cost

PRODUCED BY GM:

(A) CHEVROLET MOTOR DIVISION

(B) CHEVROLET MOTOR DIVISION AND GM OF CANADA

*Available approximately Jan. 1, 1982

(C) BUICK MOTOR DIVISION

(D) OLDSMOBILE MOTOR DIVISION

MALIBU CLASSIC OPTIONS



Power Windows. Includes rear vents which can be controlled from driver's seat or in rear.



Rally Wheels. Geometric design features gray and silver-color accents and bright trim rings.



Sport Wheel Covers. Honeycomb-like pattern is available in silver or gold color.



Air Conditioning. Cools and ventilates with easily operated controls.

Sound Systems. Choose your GM-Delco quality-built radio from the list below. All radios include dual front speakers and fixed-length fender antenna; all stereos include dual rear speakers.



Comfortilt Steering Wheel. Adjusts to six different positions for a comfortable driving angle and for easier entries and exits.

OTHER OPTIONS

- Automatic speed control with Resume Speed feature
- Electric rear window defogger
- Halogen hi-beam headlamps
- Auxiliary lighting. Includes luggage compartment light (sedan only), automatic time-delay dome light, underhood light, headlamp-on reminder and wagon cargo area dome light
- Gage Package with Trip Odometer. Includes electric clock, trip odometer, voltmeter, temperature and oil pressure gages (NA on diesel)
- Quartz electric clock
- Power door lock system
- Radios: AM, AM/FM, AM/FM stereo, AM/FM stereo with 8-track stereo tape, AM/FM stereo with stereo cassette tape
- Speakers: Dual rear available with AM and AM/FM monaural radios
- Power antenna
- Intermittent windshield wiper system
- 55/45 front seating

- Custom interior trim (sedan only)
- Custom Two-Tone paint
- Tires: P185/75R-14 fiberglass-belted radial ply white-stripe (sedan only); P195/75R-14 fiberglass-belted radial ply white-stripe (wagon only); P195/75R-14 steel-belted radial ply white-stripe (required with diesel engine and puncture-sealant tires)
- Puncture-sealant tires
- Tinted glass, all windows
- Mirrors: Remote-control outside rearview, left-hand; Sport, left-hand remote and right-hand manual
- Moldings: Deluxe body side with black vinyl insert; door edge guards
- Body pin striping
- Heavy-duty front and rear suspension with higher rated front and rear springs and matching shock absorbers (NA on wagons)
- Heavy-duty battery
- Bumper rub strips
- Bumper guards
- Heavy-duty cooling system

- Color-keyed floor mats, front and rear
- Cold Climate Package (diesel engine only)
- Wire wheel covers
- Wire Wheel Cover Locking Package. Locks cover to hub.

WAGON OPTIONS

- Cargo Area Security Package. Includes locking side stowage bins and a locking floor stowage and spare tire compartment.
- Rear window air deflector
- Performance axle ratio with 5.0 Liter V8 engine
- Limited slip differential
- Roof carrier
- Estate Equipment. Includes wood-grain vinyl body side and tailgate panels

- Deluxe load floor carpeting
- Power tailgate window release.

For Malibu Classic trailer-towing capabilities, see the 1982 Trailer Towing Guide at your Chevrolet dealership.

THE GM CONTINUOUS PROTECTION PLAN

Offers service protection in addition to that provided by GM's new vehicle limited warranty. Ask your dealer about it. Coverage available only in the U.S.A. and Canada.

Also, see your Chevrolet dealer for details and information about GM's 24-month/24,000-mile Power-Protection-Plus Limited Warranty.

SAFETY FEATURES

OCCUPANT PROTECTION

- Manual lap/shoulder belts with push-button buckles for driver and right front passenger (driver's side includes visual and audible warning system)
- Manual lap belts with push-button buckles for rear passenger positions — also the center front.
- Energy-absorbing steering column
- Passenger guard door locks
- Safety door latches and stamped steel hinges
- Folding seat back latches
- Energy-absorbing instrument panel and front seat back tops
- Laminated windshield/tempered side and rear glass
- Safety armrests
- Identification symbols for controls and displays.

ACCIDENT AVOIDANCE

- Side marker lights and reflectors
- Parking lamps that illuminate with headlamps
- Four-way hazard warning flasher
- Backup lights
- Lane-change feature in direction signal control
- Windshield defrosters, washer and dual-speed wipers
- Vinyl-edged inside mirror
- Outside rearview mirror
- Dual master cylinder brake system with warning light
- Starter safety switch
- Dual-action safety hood latches.

ANTI-THEFT

- Audible anti-theft ignition key reminder
- Anti-theft steering column lock
- Inside hood release.

A WORD ABOUT ASSEMBLY, COMPONENTS AND OPTIONAL EQUIPMENT IN THESE CHEVROLET PRODUCTS.

The Chevrolets described in this catalog are assembled at facilities of General Motors Corporation operated by the GM Assembly Division or GM of Canada. These vehicles incorporate thousands of different components produced by various divisions of General Motors and by various suppliers to General Motors. From time to time during the manufacturing process, it may be necessary, in order to meet public demand for particular vehicles or equipment, or to meet federally mandated emissions, safety and fuel economy requirements, or for other reasons, to produce Chevrolet products with different components or differently sourced compo-

nents than initially scheduled. All such components have been approved for use in Chevrolet products and will provide the quality performance associated with the Chevrolet name.

With respect to extra cost optional equipment, make certain you specify the type of equipment you desire on your vehicle when ordering it from your dealer. Some options may be unavailable when your car is built. Your dealer receives advice regarding current availability of options. You may ask the dealer for this information. GM also requests the dealer to advise you if an option you ordered is unavailable. We suggest that you verify that your car includes the optional equipment you ordered or, if there are changes, that they are acceptable to you.



Malibu Classic Station Wagon shown in Redwood. For details about the Malibu Classic Wagon, see the 1982 Chevy Wagons catalog or ask your dealer.



Malibu Classic Sedan shown in Silver.

Chevy makes good things happen... for you!

Malibu Classic