

# 1982 CITATION



## 1982 Chevy Citation. With over 15 billion miles behind it.

Since its introduction, the Chevy Citation has been a remarkable success story. The best-selling new car ever introduced by Chevrolet, Citation now is credited with over 850,000 owners who have driven more than 15 billion miles.

For 1982, Citation has what it takes to maintain its remarkable popularity.

At the heart of Citation's appeal is the traction of front-wheel drive that pulls it through mud, snow or sand.

And because Citation is compact-sized, it's also good at fitting into cramped parking spots. But inside, Citation takes on a new dimension—that of a mid-size car with room for five adults.

And there's more. Lift the hatch and discover a storage cover that hides a surprising amount of space for purchases and luggage. Or remove the storage cover, lower the back seat and you have the utility of a station wagon — with room for bikes or a bulky lawn mower.

Yet for all its inventive ways, Citation has great styling appeal. A new horizontal-design grille gives it a smart, road-hugging look.

It's also beautifully engineered with a 4-cylinder engine for 1982 featuring Electronic Fuel Injection — we call it EFI — that more precisely meters gasoline and air for increased emissions control, improves drivability and permits increased engine output.

New high pressure tires reduce rolling resistance. And there's a new fluidic windshield washer system for improved visibility. Plus all the other features Citation's known for: efficient aerodynamics, rack-and-pinion steering, MacPherson-strut front suspension, extensive anti-corrosion protection and more.

Is it any wonder then that Citation has so many owners and miles to its credit? Considering its track record, you too may want to enjoy this very exciting automobile. The 1982 Chevy Citation.

### Important: A word about this catalog.

We have tried to make this catalog as comprehensive and factual

as possible and we hope you find it helpful. However, since the time of printing, some of the information you will find here may have been updated. Also, some of the equipment shown or described throughout this catalog is available at extra cost. Your dealer has details and, before ordering, you should ask him to bring you up to date.

The right is reserved to make changes at any time, without notice, in prices, colors, materials, equipment, specifications and models. Check with your Chevrolet dealer for complete information.



Citation 4-Door Hatchback Sedan shown in Custom Two-Tone Colors, Beige with Light Redwood accents.



## Compact-sized on the outside, five-sized on the inside.

End to end, Citation measures a bit under 15 feet, making it a compact size that slips through traffic as easily as into your garage.

But because front-wheel drive and a transverse-mounted engine create extra space, Citation surprises you with a mid-size interior. That equates to over six feet of combined front and rear leg room — ample space for five adults in full, wide, comfortable seats with soft foam cushioning.

Front-wheel drive also accounts for Citation's well-known traction under less-than-ideal road conditions. Because most of the car's weight is up front, it has pulling power that makes it through snow or sand, up mountain highways, down rutted side roads. And does it with surprising ease.

That famous pulling power also accounts for Citation's towing capacity. Check your dealer for details on its trailering capability ratings and recommended equipment.

When it comes to people, roads or loads, the 1982 Citation handles them all very well indeed.



## Citation. It carries big loads for the fun of it.

If you buy a Citation for its hauling ability alone, you've made a smart move. Lower the back seat and you have over 41 cu. ft. for piling in unwieldy sports gear. Or leave the storage cover in place and find nearly 20 cu. ft. of hidden storage for suitcases or packages.

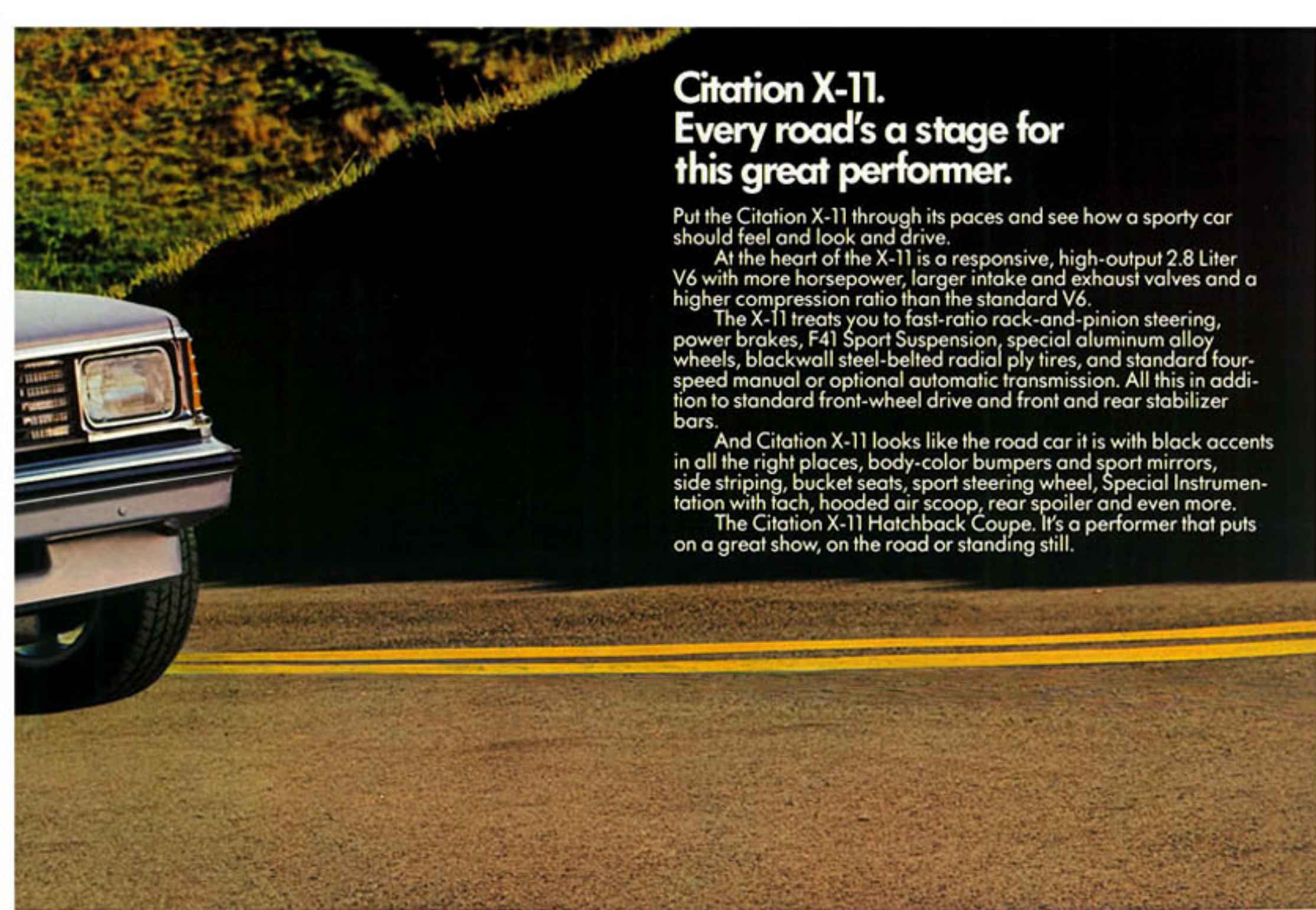
And Citation works hard to provide you and your cargo with a comfortable trip. Full Coil suspension and rubber-cushioned mountings smooth the ride; stabilizer bars front and rear steady it.

Wherever your 1982 Citation takes you, take along everything you need to have a good time.





Citation X-11 2-Door Hatchback Coupe shown in Silver.



## Citation X-11. Every road's a stage for this great performer.

Put the Citation X-11 through its paces and see how a sporty car should feel and look and drive.

At the heart of the X-11 is a responsive, high-output 2.8 Liter V6 with more horsepower, larger intake and exhaust valves and a higher compression ratio than the standard V6.

The X-11 treats you to fast-ratio rack-and-pinion steering, power brakes, F41 Sport Suspension, special aluminum alloy wheels, blackwall steel-belted radial ply tires, and standard four-speed manual or optional automatic transmission. All this in addition to standard front-wheel drive and front and rear stabilizer bars.

And Citation X-11 looks like the road car it is with black accents in all the right places, body-color bumpers and sport mirrors, side striping, bucket seats, sport steering wheel, Special Instrumentation with tach, hooded air scoop, rear spoiler and even more.

The Citation X-11 Hatchback Coupe. It's a performer that puts on a great show, on the road or standing still.



Citation X-11 high-output



Front bucket seats covered in Sport Cloth



X-11 hood with func-



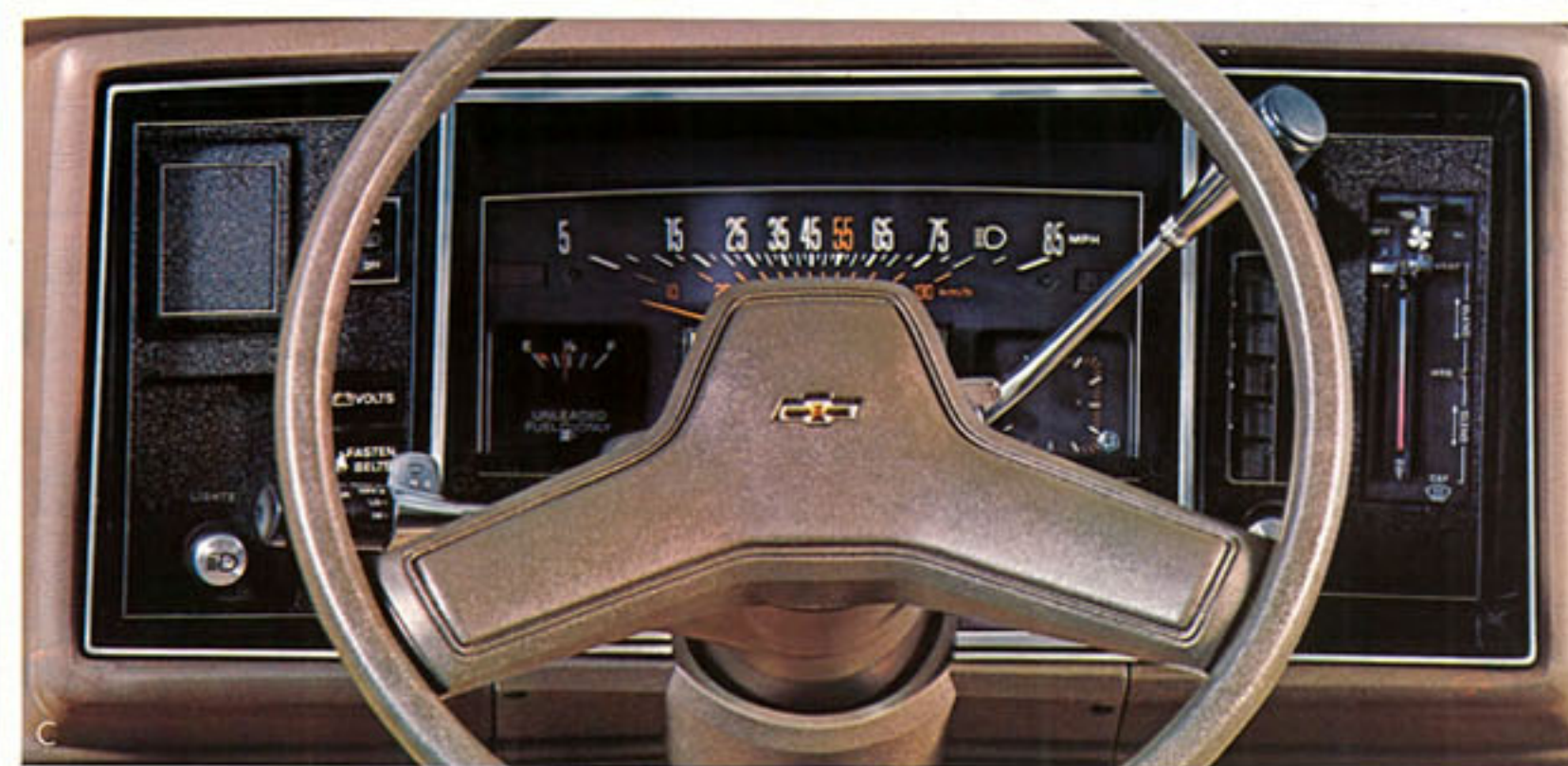
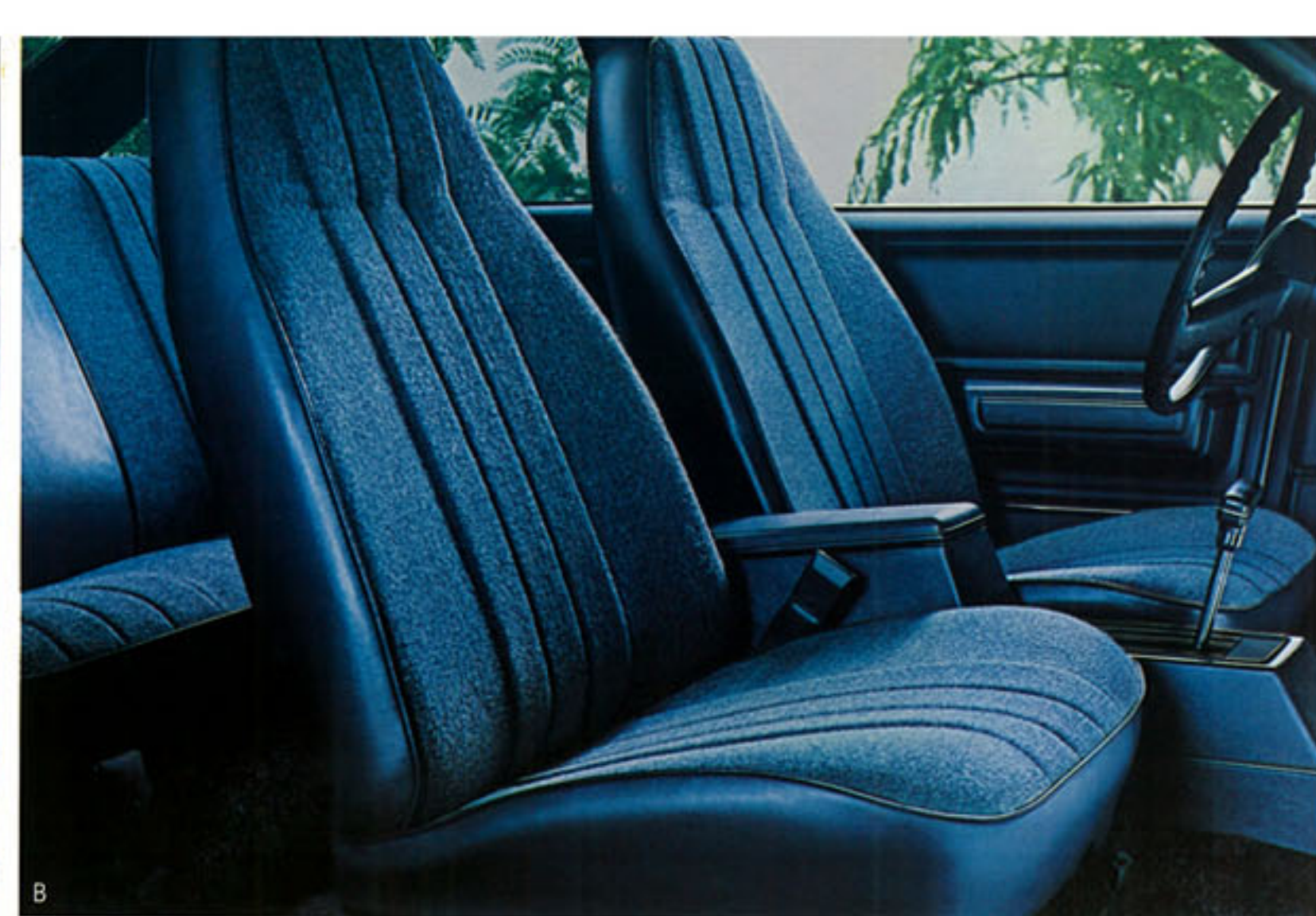
Rear deck spoiler plus body-color rear



X-11 sporty profile features body-color sport mirrors, black accents, distinctive decal, aluminum alloy wheels and blackwall steel-belted radial ply tires.



Special Instrumentation with tachometer and sport steering wheel.



A. Citation Custom front bench seat.  
B. Citation front bucket seats covered with Sport Cloth.  
C. Citation instrument panel.

# Colors

Interior Colors	Dk.					
	Charcoal	Blue	Jade	Beige	Camel	Redwood
<b>Citation Custom Interior<sup>†</sup></b>						
Custom Vinyl (Bench, Sedan Only)	X		X	X		X
Custom Cloth (Bench)		X	X	X		X
Custom Cloth (Bucket)		X	X	X		X
<b>Citation</b>						
Vinyl (Bench, Sedan Only)	X	X			X	X
Sport Cloth <sup>†</sup> (Bench)	X	X			X	X
Sport Cloth <sup>†</sup> (Bucket)	X	X			X	X

## Exterior Colors

Beige			X	X	X	X
Dk. Blue*			X	X	X	
Lt. Blue*		X	X			
Lt. Brown*				X	X	
Charcoal*		X				
Lt. Jade*		X	X			
Dk. Jade*			X	X	X	
Redwood*				X	X	X
Lt. Redwood*				X		X
Silver Gray		X	X			X
Silver*		X	X			X
White		X	X	X	X	X

## Custom Two-Tone Colors<sup>†</sup>

Beige/Dk. Blue*			X	X		
Beige/Lt. Redwood*				X		X
Dk. Blue*/Silver*		X				
Lt. Blue*/Dk. Blue*		X				
Dk. Jade*/Lt. Jade*				X		
Lt. Jade*/Dk. Jade*				X		
Lt. Redwood*/Redwood*						X
Silver*/Charcoal*		X				

\*Optional at extra cost    \*Metallic

NOTE: X-11 Sport Equipment Package available in Beige, Light Blue, Charcoal, Redwood, Silver and White.

## Standard Interior Trim Guide

Vinyl interior and bench seat standard on all models. All other combinations are available options, including Sport Cloth, Custom Cloth, Custom Vinyl, and bucket seats.

## Citation Dimensions (in inches)

Exterior	2-Door Hatchback	4-Door Hatchback
	Wheelbase	104.9
Length (overall)	176.7	176.7
Width (overall)	68.3	68.3
Height (loaded)	53.5	53.5
Tread — Front	58.7	58.7
Tread — Rear	57.0	57.0
Interior		
Head Room — Front	38.1	38.1
Head Room — Rear	37.7	37.7
Leg Room — Front	42.2	42.2
Leg Room — Rear	34.5	35.5
Shoulder Room — Front	56.2	56.3
Shoulder Room — Rear	56.2	56.3
Hip Room — Front	55.1	55.1
Hip Room — Rear	54.1	55.0
Cargo/Luggage Compartment (rear seat up)	19.6	19.7
Total Cargo Volume Index (cu. ft.) (rear seat down)	41.4	41.5

## Power Teams

Engines (All states, including California)	Displacement (cu. in.)	Ordering Code	Engine Availability	Transmissions	
				4-Speed Manual(1)	Automatic (2)
2.5 Liter EFI L4 (A)	151	LR8	Std.	Std.	EC
2.8 Liter 2-Bbl. V6 (B)	173	LE2	EC (3)	Std.	EC
*2.8 Liter 2-Bbl. V6 (H.O.) (B)	173	LH7	EC	Std.	EC

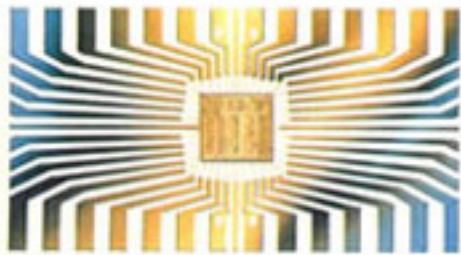
Std. — Standard. EC — Extra Cost. EFI — Electronic Fuel Injection. H.O. — High Output. (1) With floor-mounted shift control. (2) Column-mounted standard; floor-mounted with available console. (3) Power brakes required. \*Available only with X-11 Sport Equipment Package.  
PRODUCED BY GM: (A) PONTIAC MOTOR DIVISION. (B) CHEVROLET MOTOR DIVISION.

## Long Recommended Service Intervals (under ideal conditions)<sup>†</sup>

Engine Oil	12 months or 7,500 miles
Oil Filter	12 months or 7,500 miles; every 15,000 miles thereafter
Carburetor Air Filter	Up to 30,000 miles
Spark Plugs	30,000 miles
Chassis Lubrication	12 months or 7,500 miles
Automatic Transmission Fluid	Every 100,000 miles

<sup>†</sup>See Owner's Manual for conditions requiring more frequent intervals.

# Standard Features



**Computer Command Control.** This sophisticated, thoroughly tested on-board computer continuously monitors gasoline engine functions. It also fine-tunes engine performance, under all normal operating conditions, as you drive. Air-fuel mixtures are constantly adjusted to driving conditions, and the system helps compensate for altitude, barometric pressure and temperature changes.

Another benefit of Computer Command Control is that it is covered by the 5-year/50,000-mile emissions system warranty. Ask your dealer for details.

## Inside:

**Delco AM Push-Button Radio.** Has dual front speakers and fixed-length, fender-mounted antenna. (May be deleted for credit.)

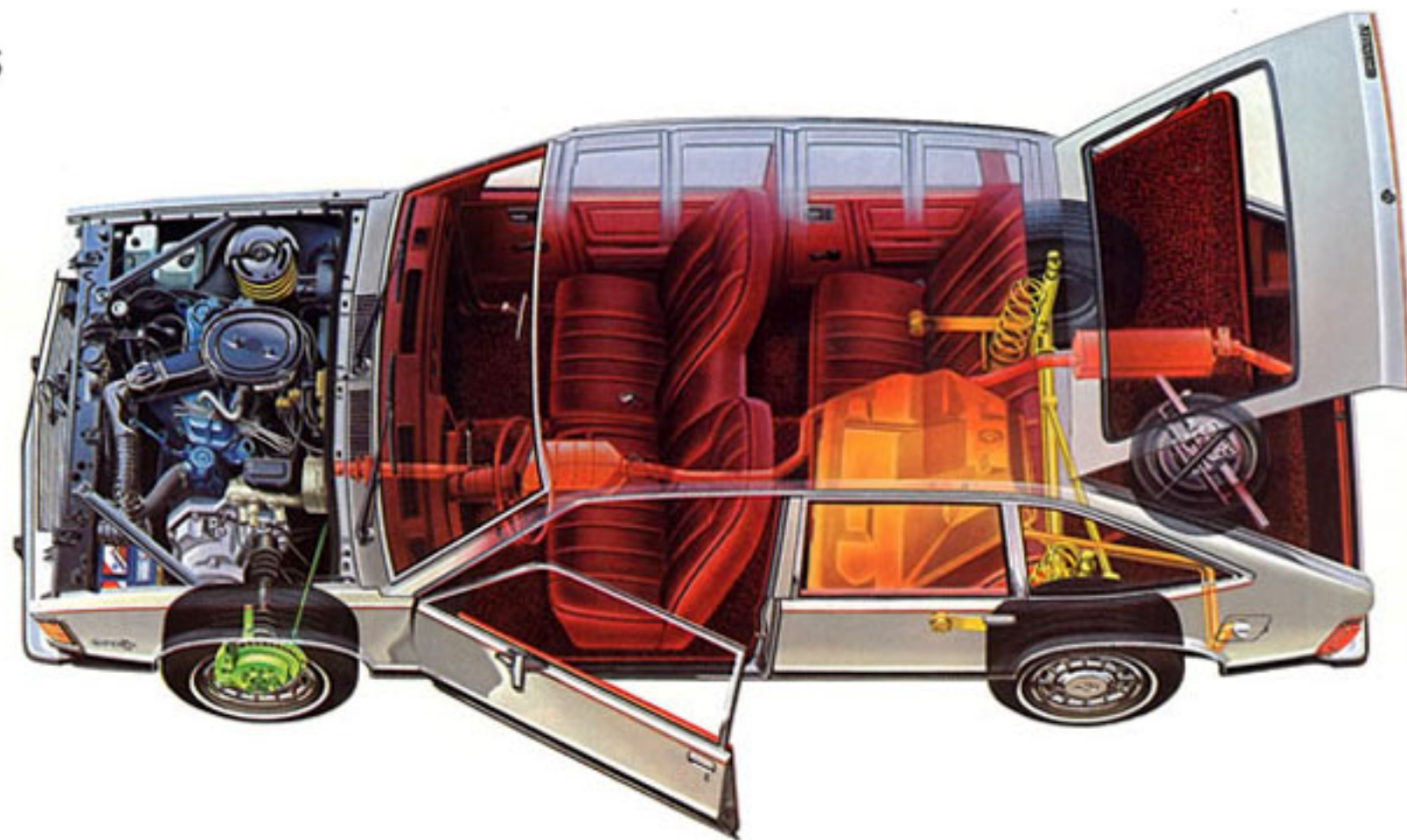
**Column-Mounted Control.** Located on steering column for fingertip access to turn signals, headlight dimmer and windshield wiper/washer.

**Sliding Door Locks.** Flush-mounted and color-coded to show when doors are locked.

**Sound-Deadening Materials.** Very lightweight yet provide as much or more sound deadening than heavier pads and acoustic compounds of the past. Include: one-piece cloth headliner with molded acoustic backing; one-piece, color-keyed cut-pile carpeting backed with molded acoustic material; sound deadener applied to inner doors, rear wheelhousings, roof and rear quarter panels.

## Plus:

Color-keyed seat and shoulder belts • Day/night inside rearview mirror • Cigarette lighter • Glove



compartment lock • Front door dome lamp switches, right and left • Roof center dome light • Inside hood release • Molded full foam seat construction • Front door padded armrests/door pull handles • Flow-through ventilation system • Blended-air heater/defroster system • Temperature, generator, oil pressure and brake system warning lights • Inertia-type front seatback locks (coupe only)

- Color-keyed cargo cover
- Color-keyed coat hooks
- Hinged rear compartment panel conceals luggage area; raises automatically when hatch is opened. Easily removed when added load height needed.

## Outside:

**New Halogen Hi-Beam Headlamps.** Noticeably increase nighttime visibility on high beam without increasing electric consumption.

**New Fluidic Windshield Washer System.** Electric dual-speed wiper sprays large drops in a wide pattern to help improve vision during operation.

**Extensive Corrosion Treatments.** Materials that counteract or block corrosion are used everywhere,

resulting in every square inch of exposed area being treated.

## Plus:

Roof drip moldings • Rocker panel moldings • Rear deck pin striping • Styled steel wheels • Left-hand outside mirror • Double-panel construction of doors, hood and rear hatch • Unitized body construction with an acrylic finish • Inner fenders protect against stones and corrosion.

## Underneath:

**New Electronic Fuel Injection for Standard 2.5 Liter L4 Engine.** Electronic Fuel Injection is a remarkably simple system that eliminates the conventional carburetor and uses a digital microprocessor to compute the proper air/fuel mixture required. This results in the correct amount of fuel being delivered to the engine for peak efficiency under a variety of driving conditions, temperatures and altitudes. New EFI system also helps improve emissions control.

## New High-Pressure Tires.

Fiberglass-belted radial ply tires have a higher recommended tire pressure to lower rolling resistance.

**Larger Fuel Tank Capacity.** Increased this year to 15.9 gallons, up from 14.1 gallons.

## Plus:

Front-wheel drive with transverse-mounted 2.5 Liter (151 Cu. In.) EFI L4 engine • Four-speed fully synchronized manual transmission (fourth gear is over-drive) • MacPherson-strut front suspension system with ride stabilizer • Engine coolant recovery system • High Energy Ignition system • Delco Freedom II battery never needs refilling • 13" x 5.5" wheels (except spare) • Rack-and-pinion steering • Permanently lubricated, maintenance-free wheel bearings • Trailing arm and beam rear suspension with coil springs and integral stabilizer bar • Front disc/rear drum brake system with diagonal dual braking circuits • Vented front disc brake rotors and finned rear brake drums • Disc brake audible wear sensors • Full Coil suspension with computer-selected front and rear springs • Fully inflated compact spare tire • Tire tread wear indicators • Delcotron generator with built-in solid-state regulator • Thermostatically controlled electric engine cooling fan • Quiet hydraulic valve lifters.



# Options

**A. Reclining Bucket Seats.** Relaxing, very comfortable for long trips; available for driver and passenger seats.

**B. Electric Rear Window Defogger.** Helps keep rear window free of mist, snow and ice.

**C. Comfortilt Steering Wheel.** Adjusts to six different positions for most comfortable driving angle.

**D. Gage Package.** Includes voltmeter, temperature and oil gages plus quartz electric clock.

**E. Automatic Speed Control.** Maintains a constant speed without touching accelerator; Resume Speed feature adds to convenience. (Requires power brakes; available for automatic and manual transmissions.) Control is located on "Smart Switch" attached to steering column.

**F. Sport Mirrors.** Body-colored pair includes left-hand remote-control and right-hand manual mirrors. (Included with X-11 Sport Equipment Package.)

**G. Power Door Locks.** Lock or unlock doors with master control on each front door.

## Special Packages

**X-11 Sport Equipment.** Includes bucket seats, high-output V6 engine, power brakes, special hood with air inlet, body-color bumpers with rub strips, decals, rear deck spoiler, body-color sport mirrors, sport steering wheel, special instrumentation with tachometer, instrument panel molding with Sport Suspension/X-11 nameplate. Black accents on grille, headlamp bezels, tail lamps, rear pillars and window frames. Sport suspension for X-11 includes 14 x 6.5 aluminum alloy wheels and P215/60R black-wall steel-belted radial ply tires.

**F41 Sport Suspension.** Includes special front stabilizer and shock absorber valving, plus higher rate springs and tuned bushings. Requires P205/70R steel-belted tires.

**Custom Interior Trim.** Includes deluxe seat and side trim materials, rear seat ashtray, color-keyed seat adjuster covers, special load area carpet, deluxe steering wheel, deluxe acoustical package and color-keyed load area sidewall trim.

**Deluxe Exterior Trim.** Sporty looking package includes full wheel covers, deluxe bright-accented tail lamps with amber turn signals, bright side window reveal moldings, and dual striping along upper body sides and fenders.

## Still More Options

- New quartz electric clock
- Automatic transmission
- Air conditioning
- Tinted glass, all windows
- Power windows
- Power brakes (required with V6 engine or air conditioning)
- Power steering (required with air conditioning)
- Bucket seats
- Console (requires bucket seats)
- Intermittent windshield wipers
- Left-hand remote-control outside rearview mirror
- Remote-controlled swing-out side windows
- Auxiliary lighting includes luggage compartment, underhood, glove compartment, ashtray and courtesy lights, plus headlamp-on reminder
- Custom Two-Tone paint includes body-side moldings and body pin striping
- Body pin striping (included with Custom Two-Tone paint or deluxe exterior)
- Front and rear bumper guards





*Chevy makes good things happen... for you!*

