



Cadillac 1988

ALLANTÉ

DE VILLE

FLEETWOOD

ELDORADO

SEVILLE

BROUGHAM

CIMARRON



Cadillac 1988

Cadillac 1988 TABLE OF CONTENTS

1	ALLANTÉ, PRESIDENTIAL LIMOUSINE	42-47	SEVILLE
2-5	ALLANTÉ	48-51	SEVILLE STANDARD AND AVAILABLE FEATURES AND SPECIFICATIONS
6-7	ALLANTÉ STANDARD FEATURES AND AVAILABLE FEATURE AND SPECIFICATIONS	52-57	BROUGHAM
8-13	DE VILLE	58-59	CADILLAC LIMOUSINES
14-15	TOURING SEDAN	60-63	BROUGHAM STANDARD AND AVAILABLE FEATURES AND SPECIFICATIONS
16-19	DE VILLE STANDARD AND AVAILABLE FEATURES AND SPECIFICATIONS	64-65	CIMARRON
20-23	FLEETWOOD D'ELEGANCE	66-67	CIMARRON STANDARD AND AVAILABLE FEATURES AND SPECIFICATIONS
24-25	FLEETWOOD SIXTY SPECIAL	68-69	ENGINES
26-29	FLEETWOOD STANDARD AND AVAILABLE FEATURES AND SPECIFICATIONS	70-71	ANTI-LOCK BRAKING
30-37	ELDORADO	72	GOLD KEY DELIVERY SYSTEM
38-41	ELDORADO STANDARD AND AVAILABLE FEATURES AND SPECIFICATIONS	INSIDE BACK COVER	SAFETY FEATURES AND OTHER INFORMATION

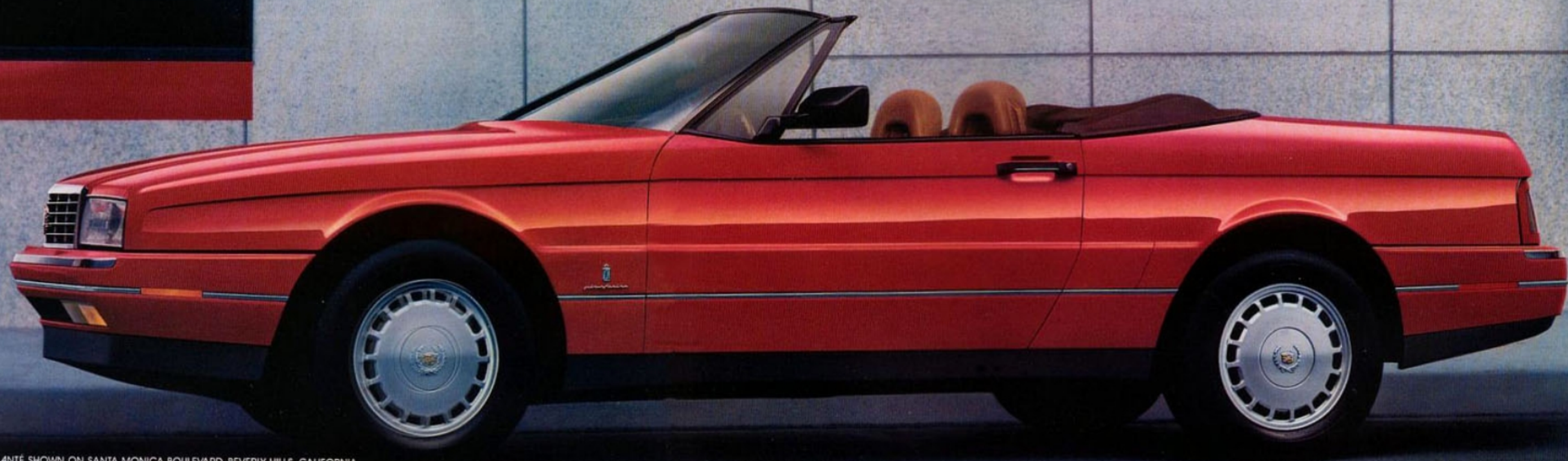
Cadillac, America's luxury car leader for 39 consecutive years, is proud to present the 1988 Cadillacs in distinctive American locales.



CADILLAC ALLANTÉ AND PRESIDENTIAL LIMOUSINE SHOWN ON THE MALL, WASHINGTON, D.C.

*"We are guided by one vision—
to design, build and sell
the world's finest luxury automobiles."*

ALLANTÉ



CADILLAC ALLANTÉ SHOWN ON SANTA MONICA BOULEVARD, BEVERLY HILLS, CALIFORNIA.

For those who are fortunate enough to write their own rules, there is Cadillac Allanté, an ultra-luxury roadster unlike any that has come before it.

Using premium German steel and a unique Swiss aluminum alloy, Italian artisans handcraft its coachwork at the studios of Pininfarina, designer of Ferraris and Rolls-Royce Camargue.

Then, specially modified 747s transport the sculptured bodies to one of the world's most advanced automotive facilities—a Cadillac facility here in the United States. After final assembly, every Allanté undergoes a 25-mile, one-hour test-track evaluation, a testing procedure duplicated by no other car builder in the world.

Only Allanté merges European road manners with renowned Cadillac comfort and convenience. A glance under the hood indicates the spirited power of Allanté's exclusive high-output V8 with sequential-port fuel injection. Handling is always precise, never harsh. Equally impressive, the standard Bosch III anti-lock braking system designed into Allanté.

The 7-year/100,000-mile Allanté Assurance Plan provides the finest coverage of any car—foreign or domestic—sold in America.* This all-inclusive plan is designed to make you the most cared-for owner in the world.

*See your Cadillac dealer for terms and conditions of this limited warranty.



ALLANTÉ



Allanté brings Cadillac comfort to two-passenger automobiles. With nearly five feet of shoulder room, Allanté defies the traditional space constraints of a roadster. Its pass-through trunk even accepts skis and other longer cargo, with a total of 16 cubic feet of space.

The European-built Recaro seats with new headrests electrically adjust ten different ways. The memory function of the driver seat "remembers" two preferred seating positions and can be programmed to move the seat to a third position for convenient entry and exit. The handfitted leather from Cogolo of Milan is specially treated to weather open-air motoring.

With the top down, Allanté turns the wind into a whisper. Even at highway speeds you can hold a normal conversation. Attach the hardtop (no tools required) and Allanté exhibits the serene quiet of an international-class closed coupe. And Allanté's convertible top has three glass windows for enhanced visibility.

This year, Allanté offers functional, electronic liquid crystal display instrumentation or new analog dials and gauges (available at no extra charge). Both designs use Allanté's digital information-processing power for unparalleled accuracy.

Allanté's only extra-cost option is a concealed cellular mobile telephone.

ALLANTÉ SELECTED STANDARD FEATURES AND AVAILABLE FEATURE



Hardtop and convertible top with all-glass windows.



All-analog gauges available at no extra charge.



Exclusive wheels and tires.

ROOF TREATMENTS

Aluminum hardtop with three glass windows—removable. No tools required. Rear glass electrically heated.

Convertible top—with three glass windows. Rear glass electrically heated. Includes power pulldown.

COMFORT AND CONVENIENCE

Recaro leather seating areas. Each seat offers ten-way power adjustment and power recliner. Memory seat, on the driver's side, stores two positions and "Exit." Choose from Maroon or Saddle Italian leather.

Electronic climate control—with outside temperature display. Air outlets designed specifically for Allanté.

Pass-through trunk design. With 16 cubic feet of space.

As well as:

- Body computer module
- Clock, digital display—in driver information center
- Console—leather-covered
- Computer diagnostics, on-board
- Cruise control
- Defogger, side windows
- Defogger, electric—rear window in both hardtop



Digital instrumentation and driver information center

- and convertible top
- Door locks, electrically powered with central door unlocking
- Driver information center
- Fuel filler door—with remote power release
- Headrests, adjustable—vertical and tilt
- Illuminated entry system
- Illuminated visor vanity mirrors, driver and passenger

- Luggage compartment lid release and pulldown—remote power
- Mirrors, electrically powered and heated—collapsible
- Parking brake release—automatic
- Steering wheel, tilt-and-telescope—leather-wrapped
- Twilight sentinel
- Windows—electrically powered

APPEARANCE AND PROTECTION

Headlamp washer, power—with independent control.

Theft-deterrent system—open vehicle design.

Clearcoat paint. Choose from new Gray metallic, Red or Black, plus Silver or Gold metal-



Recaro of Italy leather seating with 10-way power adjustment.

Anti-lock braking system.

Extra-cost concealed cellular mobile telephone.

lic finishes. Pearl White tri-coat finish also available.

Choice of instrument panels. New all-analog design or unique digital-analog style.

Exclusive lamp-out substitution system.

As well as:

- Center high-mounted stop lamp
- Lamps, tail—body color (Silver with Red or Gray)
- Leather interior accents
- Windshield wipers, controlled cycle system with adjustable delay feature

SOUND SYSTEM

Delco/Bose symphony sound system. (Please turn to page 40 for additional details.)

Power antenna.

ENGINE/CHASSIS

Bosch III anti-lock braking system. (Please turn to pages 70-71 for additional details.)



High-output 170-hp 4.1 liter V8.

Engine, high-output 4.1 liter V8 with sequential port fuel injection, transversely mounted—Specially tuned for 170 bhp @ 4300 rpm. (Please turn to pp. 68-69 for details.)

Tires, P225/60VR15 Goodyear Eagle VL blackwall radials.

Front-wheel drive.

As well as:

- Battery—heavy-duty—Delco Freedom® III
- Parking brake—automatic
- Spare tire, T125/70D15, high-pressure compact type
- Steering, power rack and pinion
- Suspension, independent four-wheel
- Transmission, special F7 four-speed automatic with overdrive and viscous converter clutch
- Wheels, forged aluminum alloy—15" x 7" with locks

ALLANTÉ'S ONLY EXTRA-COST OPTION

- Concealed cellular mobile telephone—with hands-free operation

WARRANTY

You get the best coverage on any car you can buy in America, foreign or domestic: The world's first SEVEN-YEAR/100,000-MILE ASSURANCE PLAN.*

And better extended coverage than on any car you can buy in America, foreign or domestic: Seven full years/100,000 miles (whichever occurs first) on every major assembly.

Plus, specific enhancements.

*See your Cadillac dealer for the terms and conditions of this limited warranty.

SPECIFICATIONS

ALLANTÉ

Engine

High-output 4.1 liter SFI (sequential port fuel injection) V8
 Horsepower 170 bhp @ 4300 rpm
 Torque 235 lb.-ft. @ 3200 rpm
Fuel tank capacity 83.3 liters (22.0 gallons)
Transmission Unique F7 four-speed automatic with overdrive and viscous converter clutch
Final drive ratio 2.95:1 effective

Suspension

Front Fully independent, MacPherson strut with dual path mounts, coil springs, deflected-disc strut valving and 33mm hollow stabilizer bar
 Rear Independent, isolated from body, single transverse composite spring, deflected-disc MacPherson struts

Brakes Bosch III anti-lock braking system

Steering Power rack and pinion with 15.5:1 ratio

Wheels and tires

Wheels Forged aluminum alloy with locks, 15" x 7"
 Tires P225/60VR15 Goodyear Eagle VL, V-rated, low rolling resistance, low-profile steel-belted blackwall radial

Overall sizes

Wheelbase 2525mm (99.4")
 Overall length 4537mm (178.6")
 Overall height 1327mm (52.2")
 Body width 1866mm (73.5")
 Tread width Front 1538mm (60.5")
 Rear 1538mm (60.5")

Tuning diameter

(curb-to-curb) 11.6M (38.0')
Curb weight 1582.0kg (3488.3 lbs.)
Seating capacity 2
Headroom 947mm (37.3")
Legroom 1095mm (43.1")
Hip room 1378mm (54.3")
Shoulder room 1464mm (57.6")
Luggage capacity 368.4L (13.0 cu. ft.) (including passenger compartment "pass-through") 453.4L (16.0 cu. ft.)
 Specifications as of 8-87.

SEDAN
DE VILLE



CADILLAC SEDAN DE VILLE SHOWN AT ST. LOUIS SCIENCE CENTER, ST. LOUIS, MISSOURI

Behind Cadillac's success as America's favorite luxury car is Sedan de Ville's uncanny ability to reflect today's new approach to luxury. It demonstrates that distinctive style can co-exist with personal comfort. And it shows that power and control are best exercised with quiet confidence.

The new fuel-injected 4.5 liter V8 engine enhances the car's inherent strengths. Already responsive, the Sedan de Ville now has added power for entering a hectic freeway at rush hour or overtaking a trailer on a steep hill. Its 155 horsepower rating also leads to smoother, quieter engine operation by minimizing transmission "busyness" when you're using the new standard

electronic cruise control. And after over one million miles of reliability testing, Cadillac backs this exclusive engine with a 6-year/60,000-mile powertrain warranty.*

The Sedan de Ville proves that an aerodynamic automobile can also be elegantly distinctive with a contemporary silhouette that is unmistakably Cadillac. Yet it maintains full-size

six-passenger roominess, boasting more front headroom and legroom than its larger predecessor.

The available anti-lock braking system brings another dimension to driving. It can take the panic out of panic stops and add to your peace of mind.

*See your dealer for terms and conditions of this limited warranty.



SEDAN DE VILLE



The Sedan de Ville retains the increasingly rare luxury of full-size room for six adults. Set it once and an advanced electronic climate control system automatically maintains your preferred temperature setting year-round. Even the tailored door-into-roof design enhances your comfort by reducing bothersome wind noise and adding convenience to entry and exit.

But now Sedan de Ville reaches new levels of comfort and convenience with more standard amenities than ever before. Dual comfort front seats offer the individual adjustment of bucket seats with the roominess of a bench seat. The tilt-and-telescope steering wheel assures every driver a custom fit. The infinitely adjustable controlled-cycle wiper system can accommodate any precipitation from a drizzle to a deluge.

Electronics play an important role in making Sedan de Ville so "thoughtful." One example is the ingenious retained accessory power feature. This Cadillac touch allows you to use power accessories on a time-delayed basis. For instance, you can lower the power window at a service station, listen to the end of a newscast in a parking lot, operate wipers or your remote trunk release for up to 10 minutes after you've turned off the ignition (or until a door is opened).

COUPE DE VILLE



CADILLAC COUPE DE VILLE SHOWN AT DENVER ART CENTER, DENVER, COLORADO.

The only full-size, six-passenger luxury coupe sold in America. For the luxury car buyer who prefers the styling of a two-door Cadillac and insists on full, six-passenger accommodations, Cadillac offers the Coupe de Ville.

This contemporary closed coupe reflects Cadillac's expression of up-to-date luxury together with crisp, aerodynamic styling. And it instantly communicates the values that

have made Coupe de Ville a favorite for decades.

Values like generous seating and headroom, which, like its Sedan counterpart, offer more stretch-out and sitting room than you might expect from its trim, maneuverable exterior design.

Values like performance, with a new, larger 4.5 liter V8 that develops 155 horsepower so quietly that you hardly notice its



strong presence. The reassurance of an available anti-lock braking system that helps prevent wheel lock-ups and gives you more control to do what's necessary to avoid trouble.

And values such as an available simulated convertible top in diamond grain or cambria cloth, or a Tuxedo-grain formal cabriolet—offered on Coupe de Ville alone.

Inside, settle back into the deeply contoured and cushioned dual comfort front seats, standard. Enjoy the now-

standard cruise control and tilt-and-telescope steering wheel. The standard AM/FM stereo radio affords the luxury of 8 station presets, seek and scan, while an available cellular mobile telephone affords the luxury of in-car communication.

For anyone who wants the distinctive styling of a coupe and the luxury of a six-passenger Cadillac, there can only be one choice: Coupe de Ville.

TOURING SEDAN

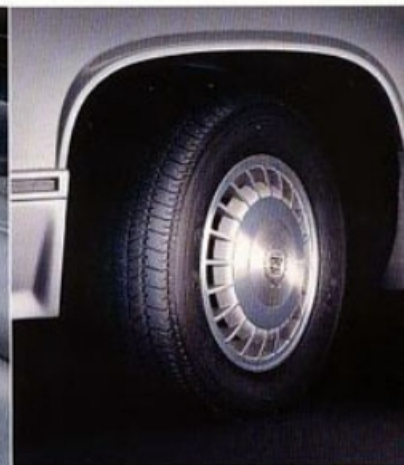


CADILLAC TOURING SEDAN SHOWN AT SEATTLE CONVENTION CENTER, SEATTLE, WASHINGTON.

The aggressive monochromatic styling of the Touring Sedan indicates that this luxury car is designed for those who demand impressive response combined with renowned Cadillac comfort.

With the Cadillac-exclusive 4.5 liter V8, the fuel-injected Touring Sedan has 155 horsepower and 240 lbs. ft. torque for lively response.

The Touring Sedan now rides on 15" Goodyear Eagle GT+4 tires with an all-seasons tread design that complements the inclement-weather traction of front-wheel drive. The four-wheel independent suspension incorporates solid front and rear stabilizer bars, higher spring and strut-valving rates, and faster ratio steering for tight, poised, controlled handling that



still maintains Cadillac ride quality.

From the front air dam with integral fog lamps to the rear deck lid spoiler, the Touring Sedan is a different breed of Cadillac.

But as a Cadillac, it indulges you with a superior degree of comfort as well. Supple leather covers the seating areas, the

front and rear headrests, the tilt-and-telescope steering wheel rim and the automatic shift lever knob.

The Touring Sedan offers an advanced anti-lock braking system and the acclaimed Delco/Bose symphony sound system as available equipment.

DE VILLE SELECTED STANDARD FEATURES



New 155-hp. 4.5 liter V8.



Retained accessory power.



Styled wheel cover.



COMFORT AND CONVENIENCE

Electronic Climate Control with outside temperature digital display. Change interior temperature setting as precisely as one degree.

Tilt-and-telescope steering wheel.

Six-passenger seating capacity. Full-size roominess for six adults.

Cruise control

Retained accessory power. Allows you to operate the

power windows, remote luggage compartment lid release, radio, windshield wipers and washers for up to ten minutes after you turn off the ignition or until a door is opened.

Fuel data center with digital fuel gauge.

Power luggage compartment release. Just touch a button inside the glove box to release the lid without leaving your Cadillac. Includes "ajar" indicator.

As well as:

- Audible reminders—electronic chimes for headlights on, key in ignition, driver's safety belt
- Body Computer Module
- Clock, digital display (in radio)
- Computer diagnostics—on-board
- Defogger, front side windows
- Door locks, electrically powered
- Door pull swing handles
- Audible reminders—electronic chimes for headlights on, key in ignition, driver's safety belt
- Body Computer Module
- Clock, digital display (in radio)
- Computer diagnostics—on-board
- Defogger, front side windows
- Door locks, electrically powered
- Door pull swing handles
- Gold Key delivery system (See page 72 for details)
- Headrests, front seat—adjustable
- Lamp monitors—front and rear
- Litter receptacle, carpeted
- Low fuel warning indicator
- Low windshield washer fluid level indicator
- Mirrors, chrome—right and left, outside rearview, remote controlled—right convex
- Multifunction turn signal lever for wipe/wash/dim
- Pockets, front seatback
- Rear door power "lock only" switches (Sedan de Ville)
- Seats, Dual Comfort, split front (three-passenger)
- Seat adjuster—six-way power (driver's side)
- Soft Ray tinted glass
- Trip odometer—push-to-reset
- Visor vanity mirror—passenger



Power luggage compartment release.



Electronic climate control.

- Visors, padded dual sun with extensions
- Windows, electrically powered. New quiet motors on Sedan de Ville rear doors
- Windshield wipers, controlled-cycle—with wet-arm washer system and submerged washer pump

SOUND SYSTEM

Power antenna.
AM/FM stereo radio with signal seek, scan and digital display (ETR™).

APPEARANCE AND PROTECTION

Cadillac's 6-year/60,000-mile powertrain warranty. Plus, 6-year/100,000-mile rust-through warranty.

See your dealer for terms and conditions of these limited warranties.

Closed-in, limousine-style rear window treatment. This formal style adds elegance to De Ville.

Clearcoat finish. Two final coats of clear acrylic are applied for a deep, rich luster.

Wreath and crest ornamentation.

Royal Prima cloth seating with Confessa cloth inserts.

Standard wheel discs.

As well as:

- Anti-corrosion treatments
- Bumper guards—front
- Bumper rub strip—front and rear
- Center high-mounted stop lamp
- Deck lid accent striping
- Door-into-roof design
- Door edge guards—car color
- Door panels, single piece inner and outer
- Door sill plates
- Dual rear reflex lenses
- Floor carpet—Trianon
- Instrument panel—two-tier design
- Low brake fluid warning indicator



New dual comfort front seats.

- Luggage compartment, carpeted
- Moldings—including body side (car color), wide rocker panel, wheel opening
- Theft-deterrent VIN tags

ENGINE/CHASSIS

Front-wheel drive. Provides impressive traction in adverse weather.

4.5 liter DFI V8 engine.

This new, more powerful, transverse-mounted, front-wheel-drive V8 with automatic transmission is a Cadillac exclusive. Includes digital fuel injection and on-board computer diagnostics. Automatically adjusts for altitude and outside temperature to help

assure consistently smooth operation. (Please turn to pages 68-69 for additional details.)

Four-speed automatic transmission with overdrive and viscous converter clutch.

Independent four-wheel suspension.

Electronic level control. Automatically helps keep the car level.

Steel-belted Michelin all-seasons radial whitewall tires. These internationally renowned tires become standard equipment on Cadillac for the first time.

As well as:

- Battery—heavy-duty—Delco Freedom® III
- Body-frame integral construction
- Brakes, power—front disc
- Parking brake release—automatic
- Spare tire, compact high-pressure type, laydown
- Spare tire cover
- Stainless steel exhaust system
- Steering, power-assisted—rock and pinion
- Wheel balance, two-plane dynamic
- Wheel discs
- Wheel jack stored in a box in right rear quarter of luggage compartment
- Wheels and tires—computer match-mounted

DE VILLE SELECTED AVAILABLE FEATURES



Two-tone paint treatment.



Top: new full cabriolet roof. Bottom: formal cabriolet roof.

COMFORT AND CONVENIENCE

Cellular mobile telephone. This factory- or dealer-installed option features a removable handset concealed in the locking compartment in the front-seat center armrest. Plus a microphone mounted on the armrest for hands-free operation.

Automatic day/night inside rearview mirror.

General Motors Acceptance Corporation (GMAC) financing. See inside back cover for details.

Astrorooft. (Not available with full cabriolet roof.) (Astrorooft reduces headroom slightly.)

As well as:

- Defogger, rear window—includes heated outside rearview mirrors
- Door locks—automatic
- Illuminated entry system
- Mirrors, electrically powered outside rearview (car color)
- Recliner, power—front passenger seat
- Seat adjuster—six-way power (front passenger's side)
- Luggage compartment power pull-down
- Twilight sentinel
- Visor vanity mirrors, illuminated—driver and passenger

SOUND SYSTEMS

Delco/Bose symphony sound system.

Customized to the exact dimensions and acoustical characteristics of your Cadillac. (Please turn to page 40 for additional details.)

Delco AM stereo*/FM stereo electronically tuned receiver with auto-reverse cassette tape player. With

operated digital disc player that is revolutionizing the way people enjoy music. Virtually eliminates background noise. Music scan and bi-directional track search. Stowage compartment holds six compact discs. Available with the Delco/Bose or cassette and graphic equalizer music systems.

Recreates the elegant look of a convertible. Available in White, Black, Dark Blue, Dark Brown or Tan. Available on Coupe de Ville only.

Cambria cloth texture full cabriolet roof treatment.

Offered in Black, Dark Blue, Dark Brown and Maroon. Distinctive look for Coupe de Ville only.

As well as:

- Accent striping (side and deck lid)
- Front license plate mounting provisions (no charge)
- Fuel filler door, remote release
- GM Protection Plan—ask your dealer for details



14" aluminum alloy wheel.



15" aluminum alloy wheel.

five-band graphic equalizer. 14 station presets.

*Receives C-Quam® AM stereo broadcasts. Most AM stereo stations across the country broadcast in C-Quam® but some do not. Check with your local stations for compatibility in your area.

Dealer-installed compact disc system. This is the laser-

APPEARANCE AND PROTECTION

Two-tone paint treatment. Five two-tone treatments add further distinction and beauty to Sedan de Ville.

Digital instrument cluster. Blue-green vacuum-fluorescent displays for the speedometer, odometer and trip odometer.

Diamond grain II texture full cabriolet roof treatment.



Wire wheel disc.



Cellular mobile telephone.



Delco/Bose symphony sound system.



Anti-lock braking system.

- Leather seating areas—includes leather-trimmed front headrests
- Luggage compartment mat
- Paint, Firemist
- Paint, Pearlmist
- Security option package
- Special interior trim
- Steering wheel rim, leather-trimmed
- Theft-deterrent system
- Trumpet horn
- Wheels, aluminum alloy—14" or 15" design.
- Wire wheel discs.

ENGINE/CHASSIS

Ride and handling touring package. Included on

Cadillac Touring Sedan and available separately. Contributing are 15-inch aluminum alloy wheels and high-performance, low-profile Goodyear Eagle GT + 4 mud- and snow-rated all-seasons P215/65R15 blackwall tires and other refinements. Also available with all-seasons P215/65R15 Goodyear Eagle GT + 4 white-wall tires.

Anti-lock braking system. This system gives you more control to do what is necessary to avoid trouble—including steering around an obstruction. (Please turn to pages 70-71 for additional details.)

Engine block heater

SPECIFICATIONS

1988 COUPE DE VILLE and SEDAN DE VILLE

Engine	Rear . . . Fully independent, deflected disc strut valving. Coil springs with 12mm solid stabilizer bar and Superlift electronic level control
4.5 liter DFI (digital fuel injection) V8	
Horsepower 155 bhp @ 4000 rpm	
Torque 240 lb.-ft. @ 2800 rpm	
Fuel tank capacity 68.8 liters (18.0 gallons usable)	
Transmission Four-speed automatic with overdrive and viscous converter clutch	
Final drive ratio 2.971 effective	
Suspension	Brakes Power front disc/rear drum
Front . . . Fully independent MacPherson struts; coil springs with Placell shock absorbers integral in struts. 30mm solid stabilizer bar	Steering Power rack and pinion with 19:41 ratio
	Wheels and tires
	Wheels 14" x 5.5"
	Tires . . . P205/75R14 Michelin steel-belted all-seasons whitewall radials
	Overall sizes
	Wheelbase 2815mm(110.8")
	Overall length 4992mm(196.5")
	Overall height 1397mm(55.0")

Body width 1820mm(71.7")	
Tread width Front 1532mm(60.3")	
	Rear 1518mm (59.8")
Turning diameter	
(wall-to-wall) 12.7M(41.7")	
(curb-to-curb) 12.0M(39.3")	
Curb weight	
Coupe de Ville 15215 kg (3354.3 lbs)	
Sedan de Ville 15404 kg (3395.9 lbs)	
Seating capacities (front and rear) . . . 3/3	
Headroom front 997mm(39.3")	
Headroom rear	
Coupe de Ville 967mm(38.1")	
Sedan de Ville 958mm(38.1")	
Legroom front 1078mm(42.4")	

Legroom rear	
Coupe de Ville 1051mm(41.4")	
Sedan de Ville 1048mm(41.3")	
Hip room front 1376mm(54.2")	
Hip room rear	
Coupe de Ville 1336mm(52.6")	
Sedan de Ville 1364mm(53.7")	
Shoulder room front 1499mm(59.0")	
Shoulder room rear	
Coupe de Ville 1464mm(57.6")	
Sedan de Ville 1486mm(58.6")	
Trunk capacity 457L (16.1 cu. ft.)	
Specifications as of 8-87	

FLEETWOOD
D'ELEGANCE



CADILLAC FLEETWOOD D'ELEGANCE SHOWN ON TURTLE CREEK BOULEVARD, DALLAS, TEXAS.

The Fleetwood name has always been reserved for very special Cadillacs such as this.

Derived from Cadillac Limousines, the formal cabriolet roof crowns the Fleetwood d'Elegance. Bright, grooved molding and lockable wire wheel discs add their distinction as well. This

year, the Fleetwood d'Elegance offers new electronic climate control calibration for comfort management.

An intense devotion to refinement appears in the superb engineering of the new 4.5 liter V8 fitted in every Fleetwood d'Elegance. With its ultra-smooth response and

reserves of power, this new engine embodies the essence of luxury motoring.

Mounting this Cadillac-exclusive engine sideways helps yield a six-passenger interior of full-size comfort. And to enhance comfort, the independent rear suspension of the Fleetwood d'Elegance now incorporates deflected disc valving which

isolates passengers from bumps without isolating the driver from the feel of the road. An available anti-locking braking system provides the invaluable peace of mind of added control.

Then and now, the Cadillac Fleetwoods have always been reserved for discriminating people such as you.



FLEETWOOD D'ELEGANCE



A simple touch of the front door latch activates the illuminated entry system, safely lighting your entrance into a world of refined, six-passenger luxury.

Multi-tufted seating areas of Royal Prima tailored knit velour are found throughout with the added convenience of six-way power seats for both driver and front seat passenger. The leather-trimmed steering wheel not only tilts, but features full telescoping adjustments.

Genuine American walnut graces the interior door panels and gently frames Fleetwood's easy-to-read digital instrument cluster. Above you, dual padded sun visors with extensions conceal illuminated vanity mirrors for both driver and passenger. And Fleetwood's twilight sentinel will automatically sense the coming evening and activate your headlamps for you. This same feature can even be adjusted to safely light your path to garage or front door for up to three minutes after you turn the ignition off.

Fleetwood owners also enjoy such standard features as electrically powered remote-control outside rearview mirrors, power trunk-lid pull-down, electronic level control, electronic cruise control, and the plush comfort of deluxe Tampo carpeting with reversible floor mats.

Full-size luxury has never been more sophisticated than Fleetwood d'Elegance.

FLEETWOOD SIXTY SPECIAL



FLEETWOOD SIXTY SPECIAL SHOWN AT FEDERAL PLAZA, CHICAGO, ILLINOIS.

This executive-class Cadillac says more about you than you can say yourself. The custom-crafted coachwork of the Fleetwood Sixty Special reflects your distinctive approach to conducting business. The limousine-like interior reveals the priority you place on your passengers' comfort and convenience.

The extended wheelbase creates a unique profile. The full padded roof and protective grooved body-side moldings

further accentuate its longer silhouette.

This year, a new 4.5 liter V8 powers the Fleetwood Sixty Special with new authority. Also standard is an advanced anti-lock braking system that can help take the panic out of panic stops.

Inside, the Fleetwood Sixty Special contains a rear seat of limousine-like proportions. Yet this exclusive Cadillac offers nearly four feet of rear seat legroom—the most of any



production car sold in America.

Rear seat passengers have an overhead console with two illuminated vanity mirrors and the equally thoughtful touch of footrests nestled into the deep-pile Tampico carpeting. Front seat passengers also enjoy the convenience of illuminated vanity mirrors mounted in the sun visors along with dual comfort seats with six-way power adjustment and manual recliners.

Generous amounts of rich American walnut are inlaid around the digital instrument cluster and on the door panels. And available premium leather is handfitted in the multi-button seating areas. Even the headrests are leather-bound.

The leather-wrapped steering wheel adds standard tilt-and-telescope adjustment. Other new standard amenities include an illuminated entry system, twilight sentinel and cruise control.

FLEETWOOD, FLEETWOOD SIXTY SPECIAL SELECTED STANDARD FEATURES



New 155-hp, 4.5 liter V8.

COMFORT AND CONVENIENCE

Dual comfort 45/55 front seats (three-passenger).

Six-way power seat adjusters for driver and front passenger.

Tilt-and-telescope steering wheel.

Luggage compartment lid power release and pulldown.

Cruise control. With new tap-up/tap-down incremental speed control.

Electrically powered outside rearview mirrors—car color.

Dual comfort front seats with six-way power adjustment for driver and passenger.



Electrically powered outside mirrors.



Anti-lock braking system (Fleetwood Sixty Special).

Illuminated entry system. Turns on interior lights and illuminates driver's door lock when you touch the door push-button.

Prefocused rear-seat reading lamps.

Rear door power "lock-only" switches. Locks all four doors.

Retained accessory power.
Fuel data center with digital fuel gauge. To help monitor your driving efficiency.

Electronic climate control.

Visor vanity mirror—illuminated—driver and passenger.

Twilight sentinel.

luggage compartment. Rear reading (pre-focused)

- Litter receptacle, carpeted
- Low fuel warning indicator
- Low windshield washer fluid level indicator
- Map pockets—front door
- Multifunction turn signal lever for wipe/wash/dim
- Pockets, front seatback
- Soft Ray tinted glass
- Trip odometer—push-to-reset
- Visors, padded dual sun—with extensions
- Windows, electrically powered
- Windshield wipers, controlled-cycle—with wet-arm washer system

As well as:

- Body computer module
- Clock, digital display (in radio)
- Defogger, front side windows
- Door locks, electrically powered
- Door pull swing handles
- Gold Key delivery system (See page 72 for details.)
- Headrests, front seats—adjustable
- Lamp monitors—front and rear
- Lights, interior—underhood, glove compartment, front ash receivers, sunshade support, door courtesy and warning, sail panel courtesy,

SOUND SYSTEM

Power antenna.

AM/FM stereo radio with signal seek, scan and digital display (ETR™).

APPEARANCE AND PROTECTION

Genuine American walnut instrument panel and door trim plates.

Digital instrument cluster.

Reversible floor mats of deluxe Tampico carpeting.

Formal cabriolet roof treatment. Features narrow textured lace moldings around the roof



Tilt-and-telescope steering wheel.



Genuine American walnut wood trim.



Wire wheel disc.

periphery, the closed-in limousine-style rear window and rear side windows.

Leather-trimmed steering wheel rim.

Electroluminescent opera lamps.

Special seat trim design. Tucked seating areas in Royal Prima cloth.

Accent striping. For side and deck lid.

Cadillac's 6-year/60,000-mile powertrain warranty. Plus, 6-year/100,000-mile rust-through warranty.

See your dealer for terms and conditions of those limited warranties.

Anti-corrosion treatments.

Low brake fluid warning indicator.

Luggage compartment mat.

Door edge guards—car color.

As well as:

- Bumper guards—front
- Bumper rub strip—front and rear
- Center high-mounted stop lamp
- Clearcoat paint
- Door sill plates
- Fleetwood d'Elegance identification—includes "Fleetwood d'Elegance" script on lower portion of rear quarter windows and glove

box "Fleetwood" on deck lid

- Floor carpet—deluxe Tampico
- Luggage compartment, carpeted
- Moldings—including body side (car color), wide grooved rocker panel, and wheel opening
- Theft-deterrent VIN tags
- Wire-wheel discs
- Weather and crest ornamentation

ENGINE/CHASSIS

Front-wheel drive. Provides impressive traction in adverse weather.

4.5 liter DFI V8 engine. This new, more powerful transverse-mounted, front-wheel-drive V8 with automatic transmission is a Cadillac exclusive. Includes digital fuel injection and on-board computer diagnostics. (Please turn to pages 68-69 for additional details.)

Four-speed automatic transmission with overdrive and viscous converter clutch.

Independent four-wheel suspension.

Power-assisted rack and pinion steering.

Steel-belted Michelin all-seasons radial whitewall tires.

Stainless steel exhaust system.

As well as:

- Battery—heavy-duty—Delco Freedom® III
- Body-frame integral construction
- Brakes, power—front disc
- Electronic level control
- Parking brake release—automatic
- Spare tire, compact high-pressure type, laydown
- Spare tire cover
- Wheel balance, two-plane—dynamic—balance weights are put on both the inside and outside wheel rim flanges, if necessary, for added rolling smoothness
- Wheel jack storage in a box in the right rear quarter
- Wheels and tires—computer match-mounted

ADDITIONAL STANDARD FEATURES FOR FLEETWOOD SIXTY SPECIAL

COMFORT AND CONVENIENCE

5.2-inch longer wheelbase. For extra riding comfort.

Four inches additional rear seat legroom. For added passenger comfort.

Footrests for rear-seat pas-

sengers. For more luxury and comfort.

Overhead vanity console. With two illuminated vanity mirrors for rear seat passengers.

APPEARANCE AND PROTECTION

5.2 inches more overall length. For a limousine-like appearance.

Full padded roof treatment.

As well as:

- "Sixty Special" glove box door ornamentation
- "Sixty Special" on door sill plates and glove box door
- "Fleetwood Sixty Special" on rear end panel

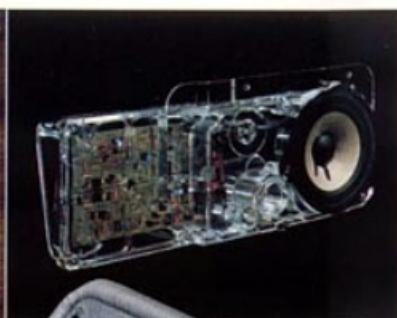
ENGINE/CHASSIS:

Anti-lock braking system. An advanced braking system that gives you more control to do what is necessary to avoid trouble—including steering around an obstruction. (Please turn to pages 70-71 for additional details.)

FLEETWOOD, FLEETWOOD SIXTY SPECIAL SELECTED AVAILABLE FEATURES



Delco/Bose symphony sound system.



Bose speaker.



14" aluminum alloy wheel.

COMFORT AND CONVENIENCE

Cellular mobile telephone.

This factory- or dealer-installed option features a removable handset concealed in the locking storage compartment in the front-seat center armrest. Also offers hands-free operation with microphone on center front armrest for clearer voice reception. Plus an exclusive radio mute module.

Memory seat. Remembers two preset driver's seat positions. An "exit" button moves the seat all the way down and back for easier exit.

Automatic day/night inside rearview mirror. Automatically adjusts the mirror to the nonglare mode.

Concealed cellular mobile telephone with armrest-mounted microphone.

Automatic door locks. Shifting the transmission into any gear automatically locks all doors. Put the lever into park and the doors automatically unlock.

SOUND SYSTEMS

The driving pleasure of the new 1988 Cadillac is greatly enhanced by the Delco Electronics sound systems. These radios are designed with the same technology and expertise that are utilized in the design of body and engine computers, electronic climate control, theft-deterrent systems and many other automotive electronic devices.

Delco/Bose symphony sound system. Customized to the exact dimensions and acoustical characteristics of your Cadillac. This 100-watt system includes integral auto-reverse cassette tape player. Also features tape equalization for metal, chromium dioxide (CrO₂) or normal bias tape. (Please turn to page 40 for additional details.)

Delco AM stereo*/FM stereo electronically tuned receiver with auto-reverse cassette tape player. With five-band graphic equalizer. 14 station presets.

*Receives C-Quam® AM stereo broadcasts. Most AM stereo stations across the country broadcast in C-Quam® but some do not. Check with your local stations for compatibility in your area.

General Motors Acceptance Corporation (GMAC) financing. See inside back cover for details.

Astrorooft. (Not available with formal cabriolet or cambria roofs or on Fleetwood Sixty Special.) (Astrorooft reduces headroom slightly.)

As well as:

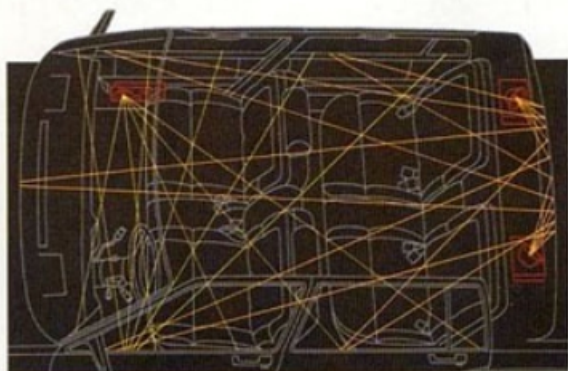
- Defogger, rear window—includes heated outside rearview mirrors
- Recliner, power—driver seat
- Recliner, power—front passenger seat



Memory seat.



15" aluminum alloy wheel.



Bose Direct/Reflected sound reproduction.

Dealer-installed compact disc system. This is the laser-operated digital disc player that is revolutionizing the way people enjoy music. Virtually eliminates background noise. Music scan and bi-directional track search. Stowage holds six compact discs. Available with the Delco/Bose or cassette and graphic equalizer music systems.

APPEARANCE AND PROTECTION

Two-tone paint treatment. Five two-tone treatments add further distinction and beauty to

Fleetwood d'Elegance. Not available with full or formal cabriolet roof or on Fleetwood Sixty Special.

Remote release fuel filler door. A light touch of the fuel filler door release button, located inside the glove compartment, opens the fuel filler door. Filler door locks automatically when pushed closed.

Aluminum alloy wheels. 14" or 15" design.

As well as:

- Front license plate mounting provisions (no charge)
- GM Protection Plan—Ask your dealer for details

- Leather seating areas—includes leather-trimmed front headrests
- Paint, Firemist
- Security option package
- Theft-deterrent system
- Trumpet horn

ENGINE/CHASSIS

Ride and handling touring package. Contributing to refined road manners are 15-inch aluminum alloy wheels and high-performance, low-profile Goodyear Eagle GT + 4 mud- and snow-rated P215/65R15 blackwall tires. (White-stripe design available.) Specially tuned components.

Anti-lock braking system. (Standard on Fleetwood Sixty Special) An electronic sensor detects impending wheel lockup. Instantly, the computer-controlled anti-lock braking system begins adjusting braking pressure to each front wheel independently and the rear wheels as a pair. Further, the anti-lock braking system compensates for road conditions. (Please turn to pages 70-71 for additional details.)

Engine block heater.

SPECIFICATIONS

1988 FLEETWOOD D'ELEGANCE 1988 FLEETWOOD SIXTY SPECIAL

Engine

4.5 liter DFI (digital fuel injection) V8
Horsepower 155 bhp @ 4800 rpm
Torque 240 lb.-ft. @ 2800 rpm

Fuel tank capacity 68.1 liters
(18.0 gallons usable)

Transmission Four-speed automatic with overdrive and viscous converter clutch

Final drive ratio 2.97:1 effective

Suspension

Front Fully independent MacPherson struts; coil springs, Placell shocks integrated in struts, 30mm solid stabilizer bar

Rear Fully independent; deflected-disc strut valving, coil springs, 12mm solid stabilizer bar, and Superlift electronic level control

Anti-lock braking system

(Sixty Special)

Includes regular brake components plus wheel sensors, computer and hydraulic-powered booster with electronic controller.

Brakes Power front disc-rear drum, self-adjusting, with audible wear indicators on disc brakes

Parking brake Foot pedal with vacuum automatic release

Telltale light Indicates hydraulic malfunction, low vacuum, or parking brake applied

Steering Power rack and pinion with 19.4:1 ratio

Wheels and tires

Wheels 14" x 5.5"

Tires P205/75R14
Michelin steel-belted all-season whitewall radials

Overall sizes

Wheelbase 2815mm (110.8")

(d'Elegance) 2947mm (116.0")

(Sixty Special) 4992mm (196.5")

Overall length (d'Elegance) 5124mm (201.7")

(Sixty Special) 1397mm (55.0")

Overall height 1820mm (71.7")

Body width Front 1532mm (60.3")

Rear 1588mm (59.8")

Track width Front 1532mm (60.3")

Rear 1588mm (59.8")

Turning diameter

Fleetwood d'Elegance

(wall-to-wall) 12.7M (41.7")

(curb-to-curb) 12.0M (39.3")

Fleetwood Sixty Special

(wall-to-wall) 13.1M (43.0")

(curb-to-curb) 12.4M (40.6")

Curb weight

Fleetwood d'Elegance 1565.2 kg

(3452.9 lbs.)

Fleetwood Sixty Special 1604.0 kg
(3536.1 lbs.)

Seating capacities

(front and rear) 3/3

Headroom front 997mm (39.3")

Headroom rear 968mm (38.1")

Legroom front 1078mm (42.4")

Legroom rear

Fleetwood d'Elegance 1048mm (41.3")

Fleetwood Sixty Special 1150mm (45.3")

Hip room front 1376mm (54.2")

Hip room rear 1364mm (53.7")

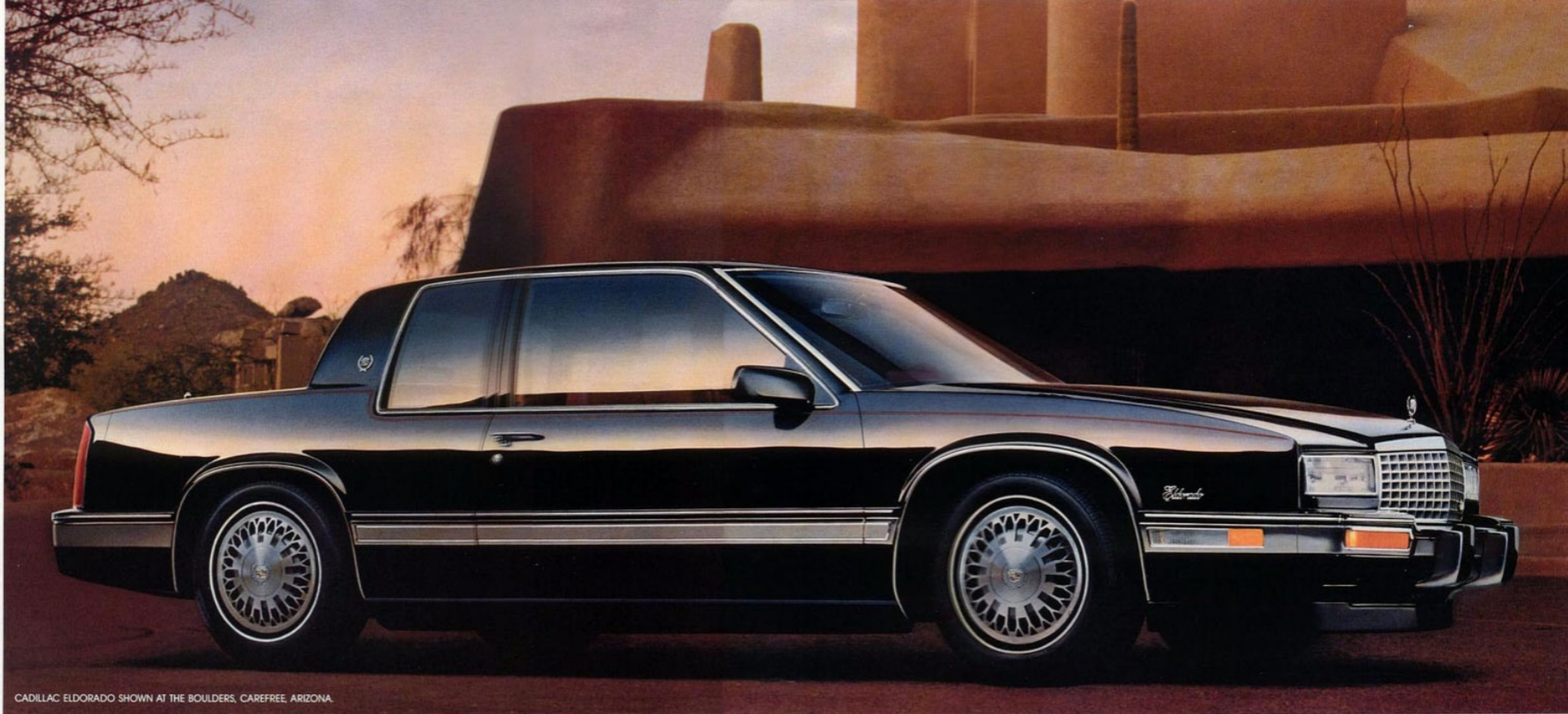
Shoulder room front 1502mm (59.1")

Shoulder room rear 1488mm (58.6")

Luggage capacity 4571L (16.1 cu. ft.)

Specifications as of 8-87

ELDORADO



CADILLAC ELDORADO SHOWN AT THE BOULDERS, CAREFREE, ARIZONA.

The 1988 Eldorado is testimony to many styling and performance refinements.

This new Eldorado combines a familiar sculptured look with a bold, power dome hood and authoritative grille. A completely reshaped rear window treatment. And an assertive stance at the rear, culminating in a longer profile and increased length.

A new 4.5 liter V8, complemented by an available anti-lock braking system, brings heightened response to Eldorado's superb front-wheel driven, four-wheel independent suspension.

New smoothness on hills because, with increased power, the transmission can remain in its highest cruising range rather than downshifting. And when you need to merge with freeway

traffic or pass a long truck on a two-lane road, you'll appreciate the thrust of 155 horsepower and 240 lbs.-ft. of torque.

A luxurious new fully padded roof is available for Eldorado, adding further distinctiveness to its sleek, aerodynamic design. Even the standard power radio antenna, now moved to the rear fender, reflects styling refinements.

Among its many thoughtful mechanical improvements is a submerged windshield washer pump that reduces noise, and a wet-arm wiper system that applies washer fluid on the "out" wipe only, for even cleaning.

Eldorado. It is a driver's car. It is a bold styling statement. And above all else, it is every inch a Cadillac.



ELDORADO



Enter a world of sophisticated sportiness. Take control behind the leather-trimmed steering wheel. Enjoy the comfort that a six-way power bucket seat adjuster offers. Admire the new Mayfair cloth and leather seating areas. Adjust the new headrests to your liking.

If you are the front-seat passenger, you also will enjoy the comfort of a six-way power bucket seat adjuster. And if you ride in back, both outboard seating positions offer a new shoulder belt.

Eldorado responds to your touches in so many thoughtful ways. Set its cruise control and settle back to enjoy the drive. Touch the AM/FM stereo radio's buttons and select up to 8 preset stations. Touch seek or scan and sample even more, all coming from a new discretely mounted rear fender antenna. The digital instrumentation keeps you in touch with remarkable accuracy.

This Eldorado even anticipates your comfort. Once you set its electronic climate control, it adjusts the temperature before you notice the need. At dusk, the twilight sentinel switches the lights on.

You may order many available driving conveniences, among them anti-lock braking, a cellular mobile telephone, and the luxury of full leather seating areas.

Eldorado. A driver's car built by people who never forget why you chose Cadillac in the first place.

ELDORADO BIARRITZ



CADILLAC ELDORADO BIARRITZ SHOWN AT OVERLOOK III, ATLANTA, GEORGIA.

The Eldorado Biarritz has been created for those discerning individuals who want even more luxury. Even more distinctive styling. Even more comfort. And all of it in the grand Cadillac manner.

You will immediately notice the formal cabriolet roof treatment with its electroluminescent coach lamps and closed-in rear window. A standard two-tone paint treatment, available in

no fewer than 17 combinations, enables you to be truly distinctive. Of course, if you prefer a single-color paint scheme, it too is available. Wide brushed and bright protective body side moldings and wire wheel discs complete the exterior.

Inside, real American walnut showcases the instrument panel, and adds to the door trim and console. New Clarendon velour cloth complements leather in seating areas,



and a new seat trim design highlights the Biarritz's special interior trim. Power recliners and power lumbar support permit precise seating adjustments and add comfort for both driver and passenger.

Deluxe Tampico floor carpeting and reversible Tampico carpeted floor mats further enhance interior luxury.

What moves Eldorado Biarritz is a new 4.5 liter V8, with:

power that reassures you when you're driving, together with available anti-lock brakes that reassure you if you ever have to panic stop.

Many feel that a Cadillac Eldorado is a most eloquent luxury statement. And among Eldorados, none is more luxurious than Eldorado Biarritz.

ELDORADO



CADILLAC ELDORADO SHOWN ON WILSHIRE BOULEVARD, LOS ANGELES, CALIFORNIA.

The new roof treatment shown here is available exclusively for the 1988 Eldorado and adds further distinctiveness to its all-new styling.

Luxurious, thickly padded Tuxedo-grain material begins at the bottom of each windshield pillar and sweeps back to the formal, closed-in rear window. Carefully hand-stitched, sealed

and bossed seams add a custom look.

Notice how a color-ingrained metal border circles the top above the doors and behind the rear side windows to reveal body-color roof metal. This reveal, together with a center top seam, give this roof treatment a character all its own. And it's tastefully finished by the Cadillac wreath and crest behind

each rear quarter window.

This new top creation is a crowning touch available for the 1988 Eldorado. It enhances the car's taut new styling, beginning up front with a bold new power dome hood. Coordinates with the available side accent striping. Emphasizes the redesigned sail panel behind the rear quarter window. And repeats the

strong new vertical taillight motif for that distinctive Cadillac appearance.

Here is an Eldorado that is at once true to the spirit of driving and true to the tradition of luxury. Virtues that have always been Cadillac hallmarks.

ELDORADO SELECTED STANDARD FEATURES



New power dome hood.



New rear shoulder harness.



New sail panel styling.

COMFORT AND CONVENIENCE

Body computer module.

Front bucket seats with new headrests (two-passenger).

Includes manual driver and passenger seat recliners.

Electronic climate control. With sun-load sensor that automatically adjusts the system even when the sun goes behind a cloud.

Cruise control. Electrically powered windows and door locks. Power luggage compartment lid release and pull-down.

Twilight sentinel. Leather-trimmed, tilt-and-telescope steering wheel.

Electrically powered outside rearview mirrors (car-color).

Front-floor console. Includes automatic transmission shift selector, fold-down armrest,

two storage compartments, optional cassette storage, rotating cup holder, spring-loaded coin holder and more.

As well as:

- Assist handles—overhead and lock pillar
- Console—overhead with reading lamps and garage door opener transmitter retainer

- Controlled-cycle wiper system with new wet-arm wiper/washer system
- Defogger, front side windows
- Door-into-roof design
- Door pull swivel handles
- Gold Key delivery system (See page 72 for details.)
- Headrests—front seats, adjustable



Six-way power seat adjuster.

- Lamp monitors—front and rear
- Low brake fluid warning indicator
- Low windshield washer fluid level indicator

New Mayfair cloth-and-leather seat.



Rear-mounted power antenna.



Styled aluminum alloy wheel.



Dramatic new rear-end treatment.

- Luggage compartment—carpeted
- Parking brake with automatic release
- Seat adjuster, 6-way power—driver and passenger seat
- Soft Ray tinted glass
- Visor vanity mirror—passenger
- Visors, padded dual sun—with adjustable sunshades

SOUND SYSTEM

Power antenna—with new rear quarter mounting
AM/FM stereo radio with signal seek, scan and digital display (ETR™).

APPEARANCE AND PROTECTION

Cadillac's 6-year/60,000-mile powertrain warranty. Plus, 6-year/100,000-mile rust-through warranty.

See your dealer for terms and conditions of these limited warranties.

New Mayfair cloth-and-leather combination seating areas.

Rear-seat center armrest.

As well as:

- Anti-corrosion treatments:
- Bumper guards—front and integral rear
- Bumper rub strips—front and rear
- Center high-mounted stop lamp

- Clearcoat paint
- Floor carpet
- Front seatback trim panel
- Moldings—including body side (car-color), rocker panel (black), wheel opening
- New improved theft-resistant steering column
- Shoulder belts, front and new rear—with comfort release feature
- Striped instrument panel and console trim plate finish
- Theft-deterrent VIN tags
- Wreath and crest ornamentation



New 155-hp, 4.5 liter V8.

ENGINE/CHASSIS

New 4.5 liter DFI V8 engine.

This transverse-mounted front-wheel-drive V8 with automatic transmission is a Cadillac exclusive. Includes digital fuel injection and on-board computer diagnostics. Automatically adjusts for altitude and outside temperature. (Turn to pages 68-69 for details.)

Independent four-wheel suspension. MacPherson struts in the front and transverse fiberglass leaf rear suspension.

Four-speed automatic transmission with overdrive and viscous converter clutch. A Cadillac exclusive, the viscous converter clutch provides a silky drivetrain feel.

Front-wheel drive.

Power four-wheel disc brakes.

Electronic level control.

Power-assisted rack and pinion steering.

Aluminum alloy wheels—14"

As well as:

- Battery—heavy-duty—Delco Freedom® III
- Body-frame integral construction

- Generator, 120 amp
- High-energy ignition
- Spare tire—compact high-pressure type
- Spare tire cover
- Tires, steel-belted all-seasons whitewall radials (blackwalls also available at no extra charge)

- Wheel balance, dynamic
- Wheels and tires, computer match-mounted

ADDITIONAL STANDARD FEATURES ON ELDORADO BIARRITZ

COMFORT AND CONVENIENCE

Power lumbar support adjusters and power recliners for front bucket seats.

Front seatback pockets.

APPEARANCE AND PROTECTION

Genuine American walnut instrument panel, console, and door trim plates.

Two-tone paint treatment.

New cabriolet padded roof with opera lamps and molding modifications.

New design closed-in rear window treatment.

Wire wheel discs.

New Biarritz interior trim.

Clarendon cloth and sierra grain leather combination seating areas.

As well as:

- Accent molding
- Biarritz identification
- Floor carpet—deluxe Tampico
- Floor mats—reversible Tampico carpeted, front and rear

ELDORADO SELECTED AVAILABLE FEATURES



Anti-lock braking system.



New 15" styled aluminum alloy wheel.



Power passenger seat recliner.

COMFORT AND CONVENIENCE

Cellular mobile telephone. It features a removable handset concealed in the locking storage compartment in the front seat center armrest. Also included is a hidden microphone mounted between the sun visors for hands-free operation. Plus an exclusive radio mute control which automatically decreases the volume of the radio through the rear speakers while the front radio speakers are used for the telephone.

Astrorooft. Not available with full padded roof. (Astrorooft

reduces headroom slightly)

Automatic day/night mirror.

General Motors Acceptance Corporation (GMAC) financing. See inside back cover for details.

Genuine American walnut trim. Standard on Biarritz.

As well as:

- Defogger, rear window—includes heated outside rearview mirrors
- Door locks, automatic
- Illuminated entry system
- Recliner, power—passenger seat
- Visor vanity mirrors, illuminated—driver and passenger

SOUND SYSTEMS

Delco/Bose symphony sound system. Customized to the exact dimensions and acoustical characteristics of your Eldorado.

Delco/Bose special features include:

Signal seek and scan. "Seek" finds the next clear station automatically. "Scan" automatically samples clear stations for five seconds each.

Dynamic Noise Reduction (DNR™). Reduces hiss.

Treble and bass controls. Permits you to reduce either bass or treble on sources with excessive bass or treble content.

Integral cassette tape player. With these features:

- Auto reverse.** Automatically plays tape in both directions.
- Dolby® noise reduction.** Automatically reduces hiss on Dolby-encoded tapes.
- Tape equalization.** Adapts to Chromium Dioxide (CrO₂),



The Delco/Bose command center.

The acclaimed Delco/Bose symphony sound system experience.





Wire wheel disc.



Top: New full padded roof treatment (Eldorado only). Bottom: Formal cabriolet roof treatment.



Genuine American walnut wood trim (standard on Eldorado Biarritz).

Metal (70 μ S) and Ferric Oxide (120 μ S) tapes.

—Music search. Repeat last selection or skip to next selection.

Patented "digital mode" amplifiers. Compact and efficient. 25 watts each for 100 watts total.

Helical voice coil speakers. Low-impedance design to accept greater power for clear sound across their audible range.

Delco electronically tuned receiver with auto-reverse cassette tape player. With AM stereo*/FM stereo and five-band graphic equalizer. 14 station presets.

*Receives C-Quam® AM stereo broadcasts. Most AM stereo stations across

the country broadcast in C-Quam® but some do not. Check with your local stations for compatibility in your area.

APPEARANCE AND PROTECTION

Full cabriolet roof.

Recreates the elegant look of a convertible. Available in White, Black, Dark Blue, Dark Brown and Tan.

Full padded roof.

New for Eldorado. Not available on Eldorado Biarritz. Distinctive appearance highlighted by color-ingrained metal peripheral molding. Formal, closed-in rear window treatment. Tuxedo-grain material.

Security option package.

GM Protection Plan. See your dealer for details.

Wide brushed and bright body side accent molding.

As well as:

- Accent striping—side and deck lid
- Door edge guards—car-color
- Floor mats—carpeted, reversible—front and/or rear
- Front license plate mounting provisions (no charge)
- Fuel filler door, remote release
- Leather seating areas
- Luggage compartment mat
- Paint, Firemist
- Theft-deterrent system

ENGINE/CHASSIS

Anti-lock braking system. (Please turn to pages 70-71 for additional details.)

Touring suspension. Tuned suspension components, 15" alloy wheels, GT + 4 radials.

As well as:

- Engine block heater
- Wire wheel discs (not available with touring suspension)
- Wheels, styled aluminum alloy, 15" x 6", locking

SPECIFICATIONS

1988 ELDORADO

Engine

4.5 liter DFI (digital fuel injection) V8
Horsepower 155 bhp @ 4000 rpm
Torque 240 lb.-ft. @ 2800 rpm

Fuel tank capacity 70.7 liters
(18.8 gallons usable)

Transmission Four-speed automatic
with overdrive and
viscous converter clutch

Final drive ratio 2.97:1 effective

Electrical
Heavy-duty Delco Freedom® III battery

Suspension

Front Fully independent MacPherson
strut with dual path
mounts, coil springs,
Pleolac shock absorbers integral in strut,
and 29mm stabilizer bar.

Rear Independent, isolated from body,
single transverse fiberglass spring,
Superlift electronic level control

Brakes Power four-wheel vented disc,
self-adjusting, zero drag

Steering Power rack and pinion
with 16.5:1 ratio

Wheels and tires

Wheels Aluminum alloy 14" x 5.5"
(15" x 6" available with touring suspension)

Tires P205/75R14 GM specification
steel-belted all-seasons whitewall radials
(P25/65R16 blackwall or whitewall
available with touring suspension)

Overall sizes

Wheelbase 2743mm (108.0")
Overall length 4856mm (195.2")
Overall height 1365mm (53.7")
Body width 1819mm (71.3")
Tread width Front 1522mm (59.9")
Rear 1522mm (59.9")

Tuning diameter

(curb-to-curb) 12.0M (39.4")
(wall-to-wall) 12.8M (42.0")
Curb weight 1540.8kg (3396.8 lbs.)

Seating capacity (front and rear) ... 2/3
Headroom front 960mm (37.8")
Headroom rear 961mm (37.8")
Legroom front 1078mm (42.4")
Legroom rear 925mm (36.4")
Hip room front 1409mm (55.5")
Hip room rear 1408mm (55.4")
Shoulder room front 1463mm (57.6")
Shoulder room rear 1460mm (57.5")
Luggage capacity 400.2L (141 cu. ft.)
Specifications as of 8-87

SEVILLE



CADILLAC SEVILLE SHOWN AT THE JOHN F. KENNEDY LIBRARY AND MUSEUM, BOSTON, MASSACHUSETTS.

In this, the age of the luxury sedan, Seville has carved out its own niche by bringing together sophisticated styling, refined performance and renowned comfort in the most elegant of Cadillac's four-door automobiles.

The sculptured detailing of the new grille brings added

distinction to Seville while the raised power dome on the hood hints at the increased power of the new 4.5 liter V8 concealed beneath it.

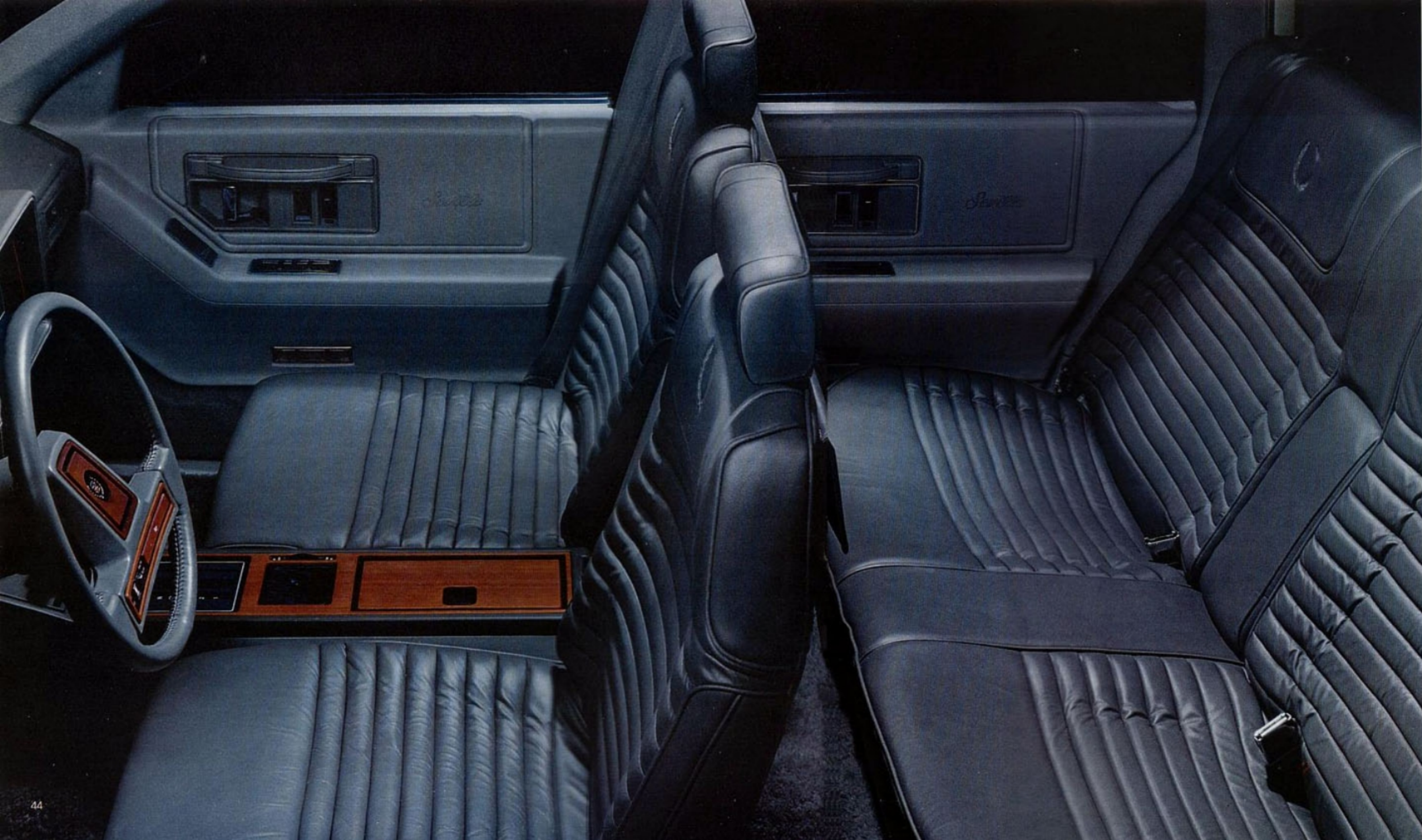
This fuel-injected engine maximizes the performance characteristics you want most from a luxury sedan. Its exceptional

reserves of power inspire confidence when you pull out to pass on a two-lane road. And its increased power output also keeps the automatic transmission in fourth gear more of the time, minimizing transmission "busyness."

The standard four-wheel disc brakes are now available with

an advanced anti-lock braking system.

Seville offers a choice of available mid-tone paint or the standard monochromatic look pictured here. Whichever you choose, a lustrous clearcoat finish reflects Seville's high standards—and yours.



SEVILLE



The genuine American walnut wood-trimmed instrument panel and console with the available handfitted leather seating areas immediately signal Seville's status as America's premier luxury sedan.

Your appreciation of Seville further increases as you experience the wealth of comforts and conveniences it offers. Power driver and passenger seats, to be sure, along with virtually every other power assist.

But that's only the beginning. The electronic climate control system actually senses when the sun goes behind a cloud and automatically adjusts for it to assure your undisturbed comfort. The independent rear suspension "weighs" your luggage and electronically levels the car. The available Delco/Bose symphony sound system, acoustically balanced to Seville's interior dimensions, reproduces your favorite music with lifelike clarity and fidelity.

This year, Seville's refinements also include new broader headrests that provide increased functionality and comfort. A rear seat redesigned for greater comfort. And safety shoulder harnesses for all outboard passengers—front and rear.

SEVILLE ELEGANTE



If Seville is the ultimate American luxury sedan, then Elegante is, without question, the ultimate Seville.

Everywhere you look, you see the distinctive character of this special edition.

The exclusive "mid-tone" paint treatment sets Elegante

apart from other luxury sedans. The standard tapered accent moldings and wire wheel discs further distinguish the uppermost Seville.

Inside, the seating areas have a unique new design tailored in new Clarendon velour and leather. The new door



panels have the Elegante name embroidered on them. Front bucket seats indulge driver and passenger with six-way power adjusters, power lumbar support and power recliners. Elegante features premium Tampico carpeting throughout, even on the reversible floor mats.

The walnut-accented console conceals the available cellular mobile telephone which offers convenient, hands-free operation.

Inside and out, Seville Elegante makes a bold and elegant statement...about itself, and about the person who drives it.

SEVILLE SELECTED STANDARD FEATURES



Bold new front-end styling.



New door panel details.



New rear seat shoulder harness.

COMFORT AND CONVENIENCE

Driver information center.

Innovative electronic readout of outside temperature, fuel economy data, engine display data (including tachometer) and more.

Digital instrument cluster. Precise, easy-to-read display of all primary driving information.

Retained accessory power. Allows you to operate many standard and available features up to 10 minutes after you turn off the ignition or until a door is opened.

Body computer module. This precise digital control system provides enhanced function of body-related customer convenience items, including the electronic climate control, driver information center and more.

Twilight sentinel. Automatically turns headlamps on and off.

Front bucket seats with new headrests (two-passenger). Includes manual driver and passenger seat recliners.

Front-floor console. Includes automatic transmission shift selector, fold-down armrest, two storage compartments,

optional cassette storage, rotating cup holder, spring-loaded coin holder and more.

Electronic climate control with sun-load sensor.

Power luggage compartment lid release and pull-down.

Leather-trimmed, tilt-and-telescope steering wheel.

driver information center)

- Computer diagnostics—on-board
- Console—overhead with reading lights and garage door opener transmitter retainer
- Controlled cycle wiper system with new wet-arm washer system. New ball-bearing submerged washer motor
- Defogger, front side windows
- Digital fuel gauge
- Door pull straps
- Gold Key delivery system (see page 72 for details.)
- Headrests—front seats, adjustable
- Lamp monitors—front and rear
- Lights, interior—underhood, glove compartment (two), front ash receiver, instrument panel courtesy, overhead dual map, door courtesy and warning, rear reading (pre-focused), sail panel courtesy, luggage compartment
- Low brake fluid warning indicator
- Low windshield washer fluid level indicator
- Parking brake release, automatic
- Seat adjuster, six-way power—driver and passenger seats
- Soft Ray tinted glass
- Trip odometer, digital
- Visor vanity mirror—passenger



Driver information center.

Cruise control.

Electrically powered windows and door locks with rear door lock switches.

Electrically powered outside rearview mirrors (car-color).

As well as:

- Clock, digital display (in



Digital instrument cluster.



New headrest design.



14" aluminum alloy wheel.

- Visors, padded dual sun—with sunshade extensions

SOUND SYSTEM

Power antenna with new rear quarter mounting

AM/FM stereo radio with signal seek, scan and digital display (ETR™).

APPEARANCE AND PROTECTION

Cadillac's 6-year/60,000-mile powertrain warranty. Plus, 6-year/100,000-mile rust-through warranty.

See your dealer for terms and conditions of these limited warranties.

Genuine American walnut on the instrument panel, steering wheel and console.

New Mayfair cloth and leather combination seating areas.

As well as:

- Accent striping (side and deck lid)
- Anti-corrosion treatments
- Bumper fascias wrap around to wheel openings
- Bumper guards—front and integral rear
- Bumper rub strip—front and rear
- Center high-mounted stop lamp

- Clearcoat paint
- Door-into-roof design
- Door sill plates with specific model identification
- Floor carpet
- Front seatback trim panel
- Luggage compartment, carpeted
- Model identification—"Seville" script on front doors
- Moldings—including body side (car-color), rocker panel (car-color), wheel opening
- New rear outboard lap and shoulder belts; new comfort release for front shoulder belts
- New dual-mode rear-seat lap belt retractors
- Theft-deterrent VIN tags
- Wreath and crest ornamentation

ENGINE/CHASSIS

4.5 liter DFI V8 engine. This transverse-mounted, front-wheel-drive V8 with automatic transmission is a Cadillac exclusive. Includes digital fuel injection and on-board computer diagnostics. Automatically adjusts for altitude and outside temperature. (Please turn to pages 68-69 for additional details.)

Independent four-wheel suspension. MacPherson struts in front, transverse fiberglass leaf spring and struts in rear.



New 155-hp, 4.5 liter V8.

Four-speed automatic transmission with overdrive and viscous converter clutch. A Cadillac exclusive, the viscous converter clutch provides a silky drivetrain feel.

Front-wheel drive.

Power four-wheel disc brakes.

Electronic level control.

Power-assisted rack and pinion steering.

Aluminum alloy wheels.

As well as:

- Battery—heavy-duty—Delco Freedom® III.
- Body-frame integral construction
- Improved theft-resistant steering column
- Spare tire—compact high-pressure type
- Spare tire cover
- Tires, steel-belted, all-seasons

- whitewall radials
- Wheel balance, dynamic
- Wheels and tires, computer match-mounted

ADDITIONAL STANDARD FEATURES ON SEVILLE ELEGANTE

COMFORT AND CONVENIENCE

Power recliners and power lumbar support adjusters for front bucket seats.

Front seatback pockets.

APPEARANCE AND PROTECTION

Mid-tone paint treatment.

Wire wheel discs.

Special Elegante interior trim and front bucket seats. With Clarendon cloth and sierra grain leather combination seating areas.

Leather-trimmed headrests.

Genuine American walnut on the door trim plates.

As well as:

- Accent molding—brushed and bright body side
- Elegante identification
- Floor carpet—deluxe Tampico
- Floor mats—deluxe reversible Tampico, front and rear
- Wire wheel discs

SEVILLE SELECTED AVAILABLE FEATURES



Touring suspension.



Delco/Bose symphony sound system.



Illuminated entry system.

COMFORT AND CONVENIENCE

Cellular mobile telephone. This factory- or dealer-installed option may be the ultimate convenience you can add to your 1988 Seville. It features a removable hand-set concealed in the locking storage compartment in the front seat center armrest. Also included is a hidden microphone mounted between the sun visors for hands-free operation. Plus an exclusive radio mute control which automatically decreases the volume of the radio through the rear speakers while the front radio speakers are used for the telephone.

Astrorooft. Glass panel can either be retracted or tilted up. Includes assist handles, adjustable sunshade and air deflector. (Astrorooft reduces headroom slightly.)

Automatic day/night mirror. Automatically adjusts the rearview mirror to the non-glare mode.

Illuminated entry system.

General Motors Acceptance Corporation (GMAC) financing. See inside back cover for details.

As well as:

- Defogger—rear window—includes heated outside mirrors

- Door locks—automatic
- Mirrors—illuminated vanity—driver and passenger
- Recliner—power—passenger seat

SOUND SYSTEMS

The driving pleasure of the new 1988 Cadillac is greatly enhanced by the Delco Electronics Sound Systems. These radios are designed with the same technology and expertise that are utilized in the design of body and engine computers, electronic climate control, theft-deterrent systems, and many other automotive electronic devices.

This world-class audio technology provides the discriminating Cadillac owner the level of comfort and enjoyment expected when driving a Cadillac.

Delco/Bose symphony sound system.

Customized to the exact dimensions and acoustical characteristics of your Seville, this premium sound system combines one of Delco's most sophisticated electronically tuned receivers (ETR™) with Bose's patented Direct/Reflected sound reproduction design. Includes integral auto-reverse cassette tape player. (Please turn to page 40 for additional details.)

Delco electronically tuned receiver with auto-reverse cassette tape player. With AM stereo*/FM stereo and five-band graphic equalizer, 14 station presets.

*Receives C-Quam® AM stereo broadcasts. Most AM stereo stations across the country broadcast in C-Quam® but some do not. Check with your local stations for compatibility in your area.

APPEARANCE AND PROTECTION

- Phaeton roof treatment. Crafted especially for Seville.
- Recreates the look of luxury convertible coachwork.
- Brushed and bright upper accent molding. For an added touch of elegance.
- Mid-tone paint treatment. Features a primary color for



Anti-lock braking system.



Cellular mobile telephone.



15" aluminum alloy wheel



Wire wheel disc.

the hood, roof, deck lid and lower body, and a secondary color for the midsection. A brushed and bright upper accent molding is included with this paint treatment.

Monotone paint treatment. For those who prefer the sim-

ple elegance of one color (No-charge option).

Security option package. Includes illuminated entry system, remote fuel filler door lock, automatic door locks and theft-deterrent system.

GM Protection Plan. See your dealer for details.

As well as:

- Door edge guards—car-color
- Floor mats—carpeted, reversible—front and/or rear
- Front license plate mounting provisions (no charge)
- Fuel filler door—remote release
- Leather seating areas
- Luggage compartment mat
- Paint, Firemist
- Theft-deterrent system

ENGINE/CHASSIS

Anti-lock braking system. An electronic sensor detects impending wheel lockup. Instantly, the computer-controlled anti-lock braking system begins adjusting braking pressure to each front wheel independently and the rear wheels as a pair. Further, the anti-lock braking system compensates for road conditions. The anti-lock braking system controls the brakes up to 15 times per second—faster and more accurately than is humanly possible. (Please turn to pages 70-71 for additional details.)

Touring suspension. 15-inch aluminum alloy wheels and Goodyear Eagle GT + 4 mud-

and snow-rated low-profile, high-performance tires (P215/65R15 blackwalls standard, new narrow whitewalls available), rear stabilizer bar, stiffer front stabilizer bar and specially tuned components comprise the touring suspension.

As well as:

- Engine block heater
- Wheel discs, wire, locking—standard on Seville Elegante
- Wheels, styled—aluminum alloy, 15" x 6"—with touring suspension only

SPECIFICATIONS

1988 SEVILLE

Engine
4.5 liter DFI (digital fuel injection) V8
Horsepower 155 @ 4000 rpm
Torque 240 lb.-ft. @ 2800 rpm
Fuel tank capacity . 70.7 liters (18.8 gallons usable)
Transmission Four-speed automatic with overdrive and viscous converter clutch
Final drive ratio 2.971 effective
Electrical
Heavy-duty Delco Freedom® II battery

Generator 120 amp
Suspension
Front Fully independent, MacPherson strut with dual path mounts, coil springs
Ploceil shock absorbers integral in strut, 29mm solid stabilizer bar
Rear Independent, isolated from body with single transverse fiberglass spring, Superlift electronic level control
Brakes Power four-wheel vented disc, self-adjusting, zero drag
Steering Power, rack and pinion with 16.5:1 ratio

Wheels and tires
Wheels Aluminum alloy 14" x 5.5" (15" x 6" with touring suspension)
Tires P205/75R14 GM specification steel-belted all-seasons whitewall radials (P215/65R15 blackwall or whitewall with available touring suspension)
Overall sizes
Wheelbase 2743mm (108.0")
Overall length 4846mm (190.8")
Overall height 1365mm (53.7")
Body width 1802mm (70.9")
Tread width Front 1522mm (59.9")
Rear 1522mm (59.9")

Turning diameter
(curb-to-curb) 12.0M (39.4")
(wall-to-wall) 42.8M (142.0")
Curb weight 1564.2kg (3448.4 lbs.)
Seating capacity (front and rear) ... 2/3
Headroom front 962mm (37.9")
Headroom rear 962mm (37.9")
Legroom front 1078mm (42.4")
Legroom rear 925mm (36.4")
Hip room front 1410mm (55.5")
Hip room rear 1420mm (55.9")
Shoulder room front 1454mm (57.2")
Shoulder room rear 1454mm (57.2")
Luggage capacity 400.2L (141 cu. ft.)
Specifications as of 8-87

BROUGHAM
D'ELEGANCE



CADILLAC BROUGHAM D'ELEGANCE SHOWN ON GENERAL MOTORS BOULEVARD, DETROIT, MICHIGAN.

Every year the Brougham achieves more distinction by remaining true to its classic design.

The Brougham's unmistakable styling is every inch a Cadillac, inches that add up to America's longest regular production car. Its unequalled 121.5" wheelbase delivers max-

imum highway cruising comfort. And the 5.0 liter V8 with four-barrel carburetor and new electronic spark control provides plenty of power to pass, or pull (when properly equipped with the available trailering package) up to 5,000 pounds—including people and luggage. Brougham also makes the perfect traveling companion for family vacations or business trips with

new standard cruise control, twilight sentinel, a cavernous trunk capacity of 19.5 cubic feet and the extended cruising range of its new 25-gallon fuel tank.

This year, Brougham debuts the Premier roof treatment. This available design enhances Brougham's formal character while affording rear seat passengers an added degree of privacy.

Brougham now rides on distinctive new dual-stripe tires with puncture-sealing tread. The 5-mph bumpers retain the quality touch of triple plating with nickel, copper and chrome. And Brougham remains the only automobile in the U.S. with genuine factory-installed wire wheels still available.



BROUGHAM D'ELEGANCE



When you think of Cadillac values, comfort and convenience are uppermost.

One look inside the Brougham d'Elegance reveals why. There are generous accommodations for six adults, with plush, multi-buttoned seating that features nearly five feet of shoulder room both front and rear. Driver and front-seat passenger are further treated to the added luxury of six-way power seat adjusters while those in the rear have the convenience of adjustable reading lamps.

All passengers enjoy the electronic climate control system that can be set to a single degree. As the outside temperature varies, it automatically adjusts to maintain your preferred level of comfort.

The Brougham d'Elegance features an AM/FM stereo radio with four extended frequency range speakers. Should the program not be to your liking, seek and scan functions allow the electronically tuned circuitry to lock on to another station with state-of-the-art stability. A must for your out-of-town trips.

New standard tilt-and-telescope steering wheel, cruise control, twilight sentinel, illuminated visor vanity mirrors for driver and front seat passenger, along with door edge guards join the long list of remaining luxury amenities such as an illuminated entry system, controlled-cycle wipers and remote luggage lid release.

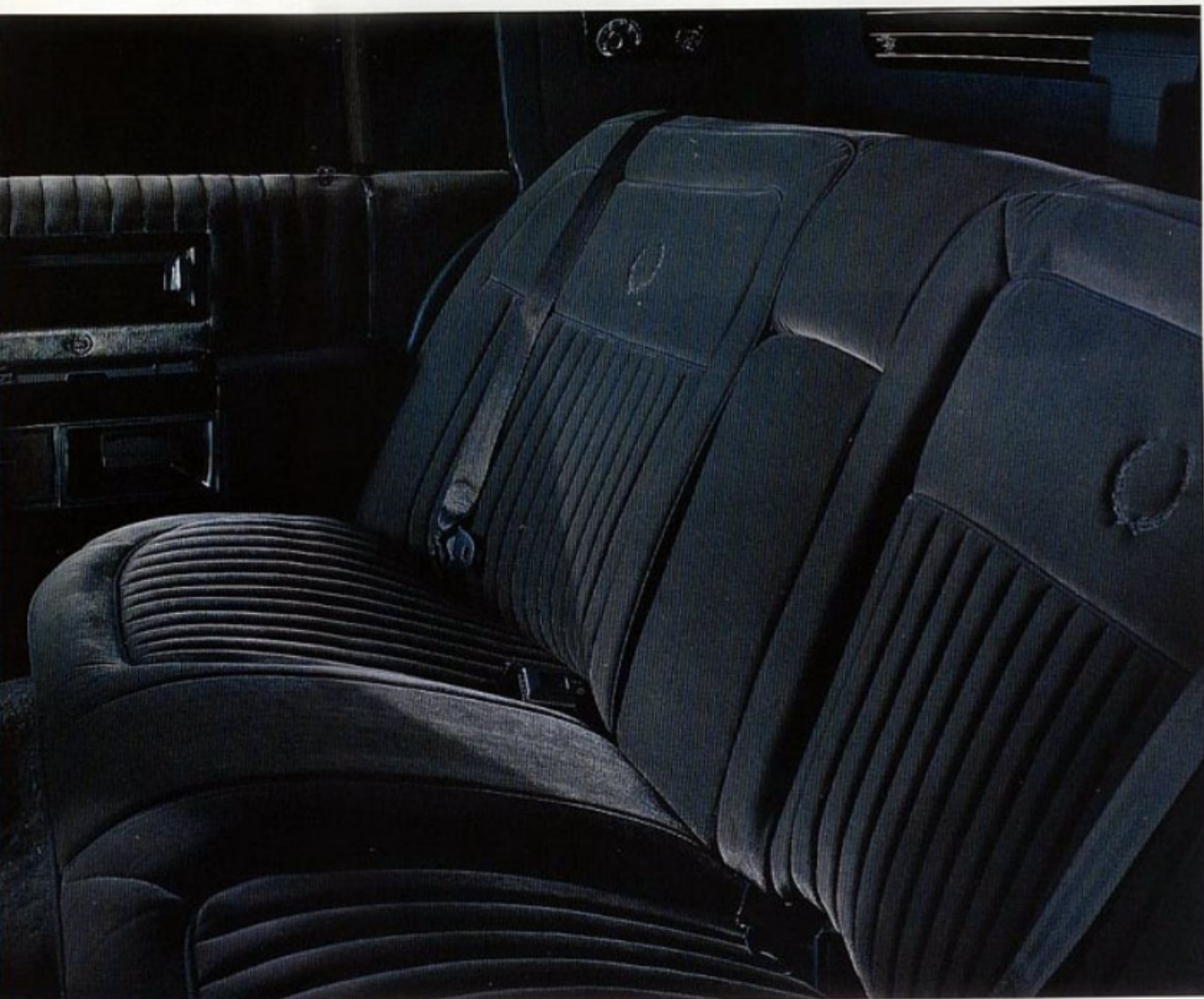
BROUGHAM



CADILLAC BROUGHAM SHOWN AT ONE BRICKELL SQUARE, MIAMI, FLORIDA.

The rear-wheel-drive Brougham continues to be among the luxury cars most in demand. Its distinctive styling complements a luxuriously equipped interior of undiminished comfort and convenience.

Whether driving home after a full day at the office or heading to your vacation hideaway for a long weekend, you will be reminded of just how accommodating this Cadillac is with its power-adjustable driver and passenger seats.



advanced electronic climate control system and tilt-and-telescope steering wheel.

Then there's the confidence of Brougham's lively 5.0 liter V8 now with electronic spark control. The confidence of dual-stripe tires with puncture-sealing tread. The confidence of

safety shoulder belts for all outboard passengers—front and rear. And the confidence of Cadillac's 6-year/60,000-mile powertrain warranty.*

*See your dealer for terms and conditions of this limited warranty.

CADILLAC
LIMOUSINES



CADILLAC LIMOUSINES SHOWN IN MIDTOWN MANHATTAN, NEW YORK CITY.



The legendary tradition of Cadillac in custom limousines continues to be available. With its unmistakable styling and renowned comfort, the Cadillac Brougham inspires America's premier coachbuilders to create custom limousines of classic

distinction. These specially crafted limousines offer you a wide range of body lengths and personal interior touches that build on Brougham's unique personality. Ask your Cadillac dealer for further details on ordering Cadillac Brougham Limousines.*

*All Limousines are available through manufacturers, retailers and establishments not connected with the Cadillac Motor Car Division. Availability, price, quality and durability of these items rest solely with the respective manufacturers and their sales organizations.

BROUGHAM SELECTED STANDARD FEATURES



5.0 liter V8.



Wheel disc and new puncture-sealing tire.



New rear shoulder belt.



COMFORT AND CONVENIENCE

Dual comfort 55/45 front seats (three-passenger). Allow driver and right front passenger to adjust seats for maximum comfort.

Tilt-and-telescope steering wheel.

Illuminated entry system.

Pushing either front door handle button illuminates keyhole and turns on inside courtesy lights for ease of entry.

Traditional full-size trunk. 19.5 cubic feet of usable cargo space.

As well as:

- Audible reminders—for headlights on, key in ignition, driver safety belt

- Clock, digital display (in radio)

- Door locks, electrically powered
- Door pull swing handles
- Electronic climate control with outside temperature digital display
- Garage door opener transmitter retainer
- Gold Key delivery system (please see page 72 for details)
- Headlamp dimmer switch, column-mounted
- Headrests, front seats—adjustable
- Lamp monitors—front and rear
- Lights, exterior—including tungsten halogen low- and high-beam headlamps
- Lights, interior—underhood, glove compartment, front ash receivers, sunshade support, door courtesy and warning, luggage compartment
- Litter receptacle, carpeted
- Low fuel warning indicator
- Low windshield washer fluid level indicator
- Mirrors, right and left outside rearview (chrome), remote controlled—right convex
- Pockets, front seatback
- Seat adjuster—six-way power (driver seat)
- Soft Ray tinted glass
- Trip odometer—push-to-reset
- Visor vanity mirror—passenger

Spacious 19.5 cubic-foot trunk.



Tilt-and-telescope steering wheel.



Dual comfort front seat.

- Visors, padded dual sun
- Windows, electrically powered
- Windshield wipers, three-speed—with fluidic windshield washer system

SOUND SYSTEM

Power antenna.

AM/FM stereo radio with signal seek, scan and digital display (ETR™).

APPEARANCE AND PROTECTION

Cadillac's 6-year/60,000-mile powertrain warranty. Plus, 6-year/100,000-mile rust-through warranty.

See your dealer for terms and conditions of those limited warranties.

Royal Prima cloth and seat trim design.

Full padded roof treatment. The padded roof incorporates a closed-in limousine-style rear window treatment.

Anti-corrosion treatments. With over 100 specially treated areas.

Wheel discs.

Rear outboard shoulder belts.

As well as:

- Accent molding
- Bumper guards—front
- Bumper rub strip—front and rear

- Center high-mounted stop lamp
- Deck lid reflex lenses
- Door sill plates
- Floor carpet
- Luggage compartment, carpeted
- Moldings—including body side (car color), wide rocker panel, wheel opening
- Opera lamps
- Theft-deterrent VIN tags
- Wreath and crest ornamentation

ENGINE/CHASSIS

5.0 liter V8 engine. This powerful four-barrel V8 engine offers responsive acceleration. Includes new electronic spark control. (Please turn to pages 68-69 for additional details.)

Four-speed automatic transmission with torque converter clutch. The over-drive fourth gear reduces engine speed approximately 30% for a quiet, Cadillac ride.

New gold- and white-stripe, puncture-sealing, steel-belted all-season radials. With an all-season tread design for wet braking performance and snow traction.

As well as:

- Battery—heavy-duty—Delco Freedom® III

- Brakes, power—front disc
- Generator, 94 amp
- High-energy ignition
- Parking brake release, automatic
- Spare tire, compact high-pressure type
- Spare tire cover
- Steering, power
- Wheels and tires—computer match-mounted

ADDITIONAL STANDARD FEATURES FOR BROUGHAM D'ELEGANCE

COMFORT AND CONVENIENCE

Cruise control.

Twilight sentinel.

Illuminated vanity mirrors, driver and passenger.

Six-way power seat adjuster for front passenger seat.

Luggage compartment lid release, power. With ignition on, a light touch of luggage compartment lock release button, located inside the glove compartment, opens the luggage compartment.

Controlled-cycle wipers. Delay feature allows adjustment of wiping action for light rain or other conditions.

Adjustable rear seat reading lamps.
Manual passenger front seat-back recliner.

As well as:

- Assist handles—three roof-mounted
- Door edge guards
- Seats, front—Dual comfort 50/50 (three-passenger)

APPEARANCE AND PROTECTION

Multi-button seat trim design.

Accent striping (side and deck lid).

D'Elegance embroidery on doors.

As well as:

- D'Elegance identification
- Floor carpet—deluxe Tampico
- Floor mats—deluxe Tampico carpeted rubber, front and rear

BROUGHAM SELECTED AVAILABLE FEATURES



Power Astrorooftop.



Twilight sentinel.



Wire wheel disc.



Genuine wire wheel.

COMFORT AND CONVENIENCE

Automatic day/night inside rearview mirror. Automatically adjusts the rearview mirror to the non-glare mode and returns it to the normal viewing mode after a short time delay.

Twilight sentinel. (Standard on Brougham d'Elegance.) This popular Cadillac convenience automatically turns headlights on and off in response to outside lighting conditions. It also includes an adjustable time delay feature to light your way as you leave your Cadillac.

Cruise control. (Standard on Brougham d'Elegance.)

Electrically powered Astrorooftop. Add this very personal touch to your Brougham. The retractable glass panel also includes an adjustable sunshade. (Astrorooftop reduces headroom slightly.)

General Motors Acceptance Corporation (GMAC) financing. Please see inside back cover for details.

Controlled cycle wipers. Delay feature allows adjustment of wiping action for light rain or other conditions. (Standard on Brougham d'Elegance.)

Luggage compartment lid release. With ignition on, a light touch of lock release button, located inside the glove compartment, opens the luggage compartment. Also available with a quiet pull-down feature which, once engaged, automatically pulls luggage compartment lid down and locks it into place. (Standard on Brougham d'Elegance.)

New Premier fully padded roof treatment. New, more formal rear window treatment together with new, closed-in rear quarter window and door pillar treatments create a distinctive crowning touch for Brougham or Brougham d'Elegance. Drip moldings match body color. Monochromatic color scheme for added elegance.

Automatic door locks. Shifting the transmission into any forward gear automatically locks all the doors of your Cadillac. Put the transmission into park and the doors automatically unlock.

Six-way power seat adjuster for front passenger seat. (Standard on Brougham d'Elegance.)

Adjustable rear seat reading lamps. (Standard on Brougham d'Elegance.)

As well as:

- Defogger, rear window—includes heated outside rearview mirrors
- Mirrors, electrically powered, outside rearview
- Recliner, power—driver seat
- Recliner, power—front passenger seat
- Visor vanity mirrors, illuminated—driver and passenger (Standard on Brougham d'Elegance)

SOUND SYSTEM

Delco electronically tuned receiver with auto-reverse cassette tape player.

APPEARANCE AND PROTECTION

Remote unlocking fuel filler door. Locking or unlocking car doors also automatically locks or unlocks fuel filler door.

Theft-deterrent system. Window decals announce that this protective feature is

helping safeguard your Cadillac 24 hours a day. Automatically activated if the integrity of the doors is violated. A driver's seat presence switch provides an added measure of security against unauthorized vehicle use.

Security option package. Includes remote fuel filler door lock, automatic door locks and theft-deterrent system.

Special interior trim.

GM Protection Plan. See your Cadillac dealer for details.

Authentic wire wheels, 15" x 6", with locks.

Wire wheel discs, with locks.

As well as:

- Accent striping (side and deck lid)
- Door edge guards (bright) (Standard on Brougham d'Elegance)
- Floor mats, carpeted rubber, front and/or rear (deluxe Tampico carpeted mats standard on Brougham d'Elegance)



Now Premier fully padded roof treatment.



Reading lamp.



Cruise control.

- Front license plate mounting provisions (no charge)
- Leather seating areas
- Luggage compartment mat
- Paint, Firemist
- Steering wheel rim, leather-trimmed

ENGINE/CHASSIS

Electronic level control.
Included with trailering pack-

age. Automatically adjusts to changing loads—additional passengers or added luggage weight—to help keep the car level. Includes 16mm rear stabilizer bar.

Trailering package When properly equipped with this package, Brougham can tow trailers up to 5,000 pounds (including passengers and luggage).

- The trailering package includes:
- Electronic level control with 24mm rear stabilizer bar
 - Heavy-duty battery, cooling and shock absorbers
 - Specific drive shaft
 - 3.23:1 rear axle ratio
 - Modified transmission shift points
 - Trailering wiring harness

As well as:

- Engine block heater
- Heavy-duty ride package
- Trumpet horn

SPECIFICATIONS

1988 BROUGHAM SEDAN

Engine
5.0 liter V8; four-barrel carburetor
Horsepower 140 bhp @ 3200 rpm
Torque 255 lb.-ft. @ 2000 rpm
Fuel tank capacity 94.6 liters
(25.0 gallons)

Electrical
Heavy-duty Delco Freedom® III battery
Generator 94 amp

Transmission Four-speed automatic with overdrive and torque converter clutch

Rear axle ratio 2.93:1
Suspension
Front Fully independent, short/long arm with coil springs and tubular direct-acting shock absorbers; 28mm tubular stabilizer bar
Rear Four-link live axle with coil springs, tubular direct-acting shock absorbers and 16mm stabilizer bar
Brakes Power front disc—rear drum
Steering Power rotary recirculating valve with 15:1:1 variable ratio

Wheels and tires
Wheels 15" x 6"
Tires P225/75SR5 GM specification puncture-sealing steel-belted, all-season, gold- and white sidewall radials
Overall sizes
Wheelbase 3085mm (1215")
Overall length 5644mm (2210")
Overall height 1441mm (56.7")
Body width 192mm (75.3")
Tread width Front 1568mm (61.7")
Rear 1542mm (60.7")

Turning diameter
(wall-to-wall) 13.4M (44.1")

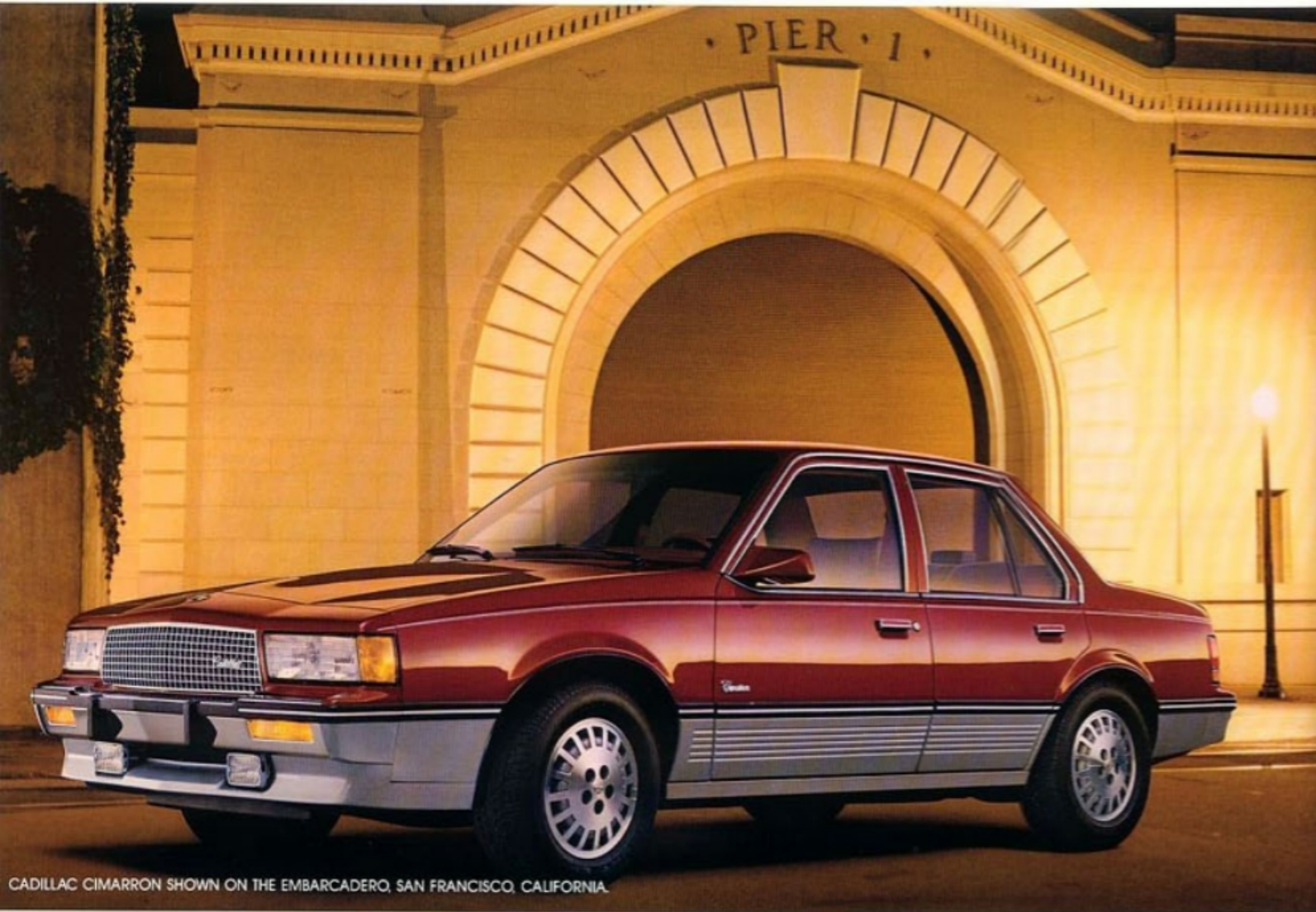
(curb-to-curb) 12.4M (40.5")
Curb weight 1890kg (4166.7 lbs.)
Seating capacity (front and rear) ... 3/3
Headroom front 991mm (39.0")
Headroom rear 967mm (38.1")
Legroom front 1367mm (42.0")
Legroom rear 1047mm (41.2")
Hip room front 1405mm (55.3")
Hip room rear 1408mm (55.4")
Shoulder room front 1508mm (59.4")
Shoulder room rear 1508mm (59.4")
Luggage capacity 563.8L (19.5 cu. ft.)

Specifications as of 8-87

Trailering package.



CIMARRON



CADILLAC CIMARRON SHOWN ON THE EMBARCADERO, SAN FRANCISCO, CALIFORNIA.

The 1988 Cimarron is built for those individuals who consider driving a sporty pastime. Its aggressive stance is complemented by its composite halogen headlamps, wraparound turn signals, distinctive grille work and new standard color-keyed body moldings, all seated firmly atop a computer-matched set of available Michelin Sport EP-X high-performance, all-season radials with 14" aluminum alloy wheels.

Inside, Cimarron greets you with all the finest appointments. Genuine handfitted leather seating areas are found throughout, from the twin front reclining bucket seats with lumbar and lateral supports to the rear, contoured bench seat.

Behind the wheel, you can select a multitude of comfortable driving positions afforded by the six-way power seat and multi-position, leather-wrapped tilt steering wheel. All the



amenities can easily be reached, from the push-button air conditioning to the twin remote electric sideview mirrors.

Engage the high-energy ignition system and watch Cimarron's analog instrument gauges come to life. The leather-covered gearshift lever slips easily and securely into the first of five forward manual speeds (an improved three-speed automatic transmission, now with a torque converter clutch, is

available). Ease off the clutch and the responsive 2.8 liter, transverse-mounted, multi-port fuel-injected V6 engine will quickly take you away. Cimarron is at home on the curves and corners of your favorite winding road with its power-assisted rack-and-pinion steering and gas-charged touring suspension with larger stabilizer bars.

It's a pleasure to drive and a value to own.

CIMARRON SELECTED STANDARD AND AVAILABLE FEATURES



Standard 2.8 liter MFI V-6.



Standard push-button air conditioning.



Standard electrically powered door locks.

COMFORT AND CONVENIENCE

Air conditioning with push-button controls.

Cruise control.

Controlled cycle wipers with fluidic windshield washer.

Electrically powered left and right outside rearview mirrors.

Electric rear window defogger.

An automatic timer turns the defogger off.

Electrically powered windows and door locks.

Gauge package.

Leather seating areas.

Luggage compartment lid release, power.

Six-way power driver seat.

Tilt steering wheel.

- Console, front floor
- Defoggers—front side windows
- Door pull handles



Available electronic instrument cluster.

- Gold Key delivery system (See page 72 for details)
- Headrests—front seats, adjustable
- Mirror, visor vanity—passenger
- Multifunction turn signal lever
- Pockets—front doors, seatbacks
- Recliner, manual—driver and passenger seats
- Seat adjuster, front—two-way, manual—passenger seat

- Seats,

front bucket (two-

passenger)

- Soft Ray tinted glass
- Trip odometer—push-to-reset

SOUND SYSTEM

Improved power antenna.

AM/FM stereo radio with signal seek, scan, clock and digital display (ETR™). (May be deleted for credit.)

APPEARANCE AND PROTECTION

Cadillac's 6-year/60,000-mile powertrain warranty. Plus, 6-year/100,000-mile rust-through warranty.

See your dealer for terms and conditions of these limited warranties.

- Accent striping, dual color
- Bumper rub strip—front and rear with accent color
- Center high-mounted stop lamp
- Fuel filler door—locking
- Luggage compartment, carpeted
- Steering wheel rim—leather-trimmed, two-spoke



Standard tilt steering wheel.



Available three-speed automatic transmission.



Available Michelin EP-X tire.

ENGINE/CHASSIS

2.8 liter V6 engine with multi-port fuel injection. (Turn to pages 68-69 for details.)

Five-speed manual transmission.

Bilstein-Delco gas-charged suspension system.

P195/70R14 all-seasons black-wall radials.

Power-assisted rack and pinion steering.

New heavy-duty battery—Delco Freedom® III.

- Body-frame integral construction
- Brakes, power—disc/drum
- Front-wheel drive
- High-energy, direct fire, distributorless ignition
- Spare tire—compact

- Spare tire cover
- Wheels and tires, computer match-mounted

Available Caspian cloth and leather seat.



SELECTED AVAILABLE FEATURES

COMFORT AND CONVENIENCE

Twilight sentinel.

General Motors Acceptance Corporation (GMAC) financing. Details inside back cover.

Vista Vent sunroof.

- Leather and Caspian cloth seating areas. (Credit option)
- Seat adjuster, six-way power—passenger seat
- Visor vanity mirrors, illuminated—driver and passenger

SOUND SYSTEM

Delco AM stereo*/FM stereo radio with cassette tape player, graphic equalizer.

*Receives C-Quam® AM stereo broadcasts. Most AM stereo stations across the country broadcast in C-Quam®.

but some do not. Check with your local stations for compatibility in your area.

Delco/Bose symphony sound system. (Details, page 40.)

APPEARANCE AND PROTECTION

Electronic instrument cluster.
Door edge guards—car color
GM Protection Plan. See your Cadillac dealer for details.

- Floor mats, carpeted—front and rear
- Fog lamp covers
- Luggage compartment mat
- Luggage rack—deck lid

ENGINE/CHASSIS

Three-speed automatic.

With new converter clutch

New Michelin EP-X P215/60R14 all-seasons blackwall radials.

- Engine block heater

SPECIFICATIONS

1988 CIMARRON

Engine

2.8 liter multi-port fuel injection V6
Horsepower 125 bhp @ 4500 rpm
Torque 160 lb.-ft. @ 3600 rpm

Fuel tank capacity .. 51.5 liters (13.6 gal.)

Electrical

Heavy-duty Delco Freedom® III battery
Generator 100 amp

Transmissions

Five-speed manual with overdrive Standard

Three-speed automatic Available

Final drive ratios

Standard five-speed manual 3.61:1
Available three-speed automatic ... 3.18:1

Suspension

Bilstein-Delco gas-charged suspension standard
Front Fully independent
Rear ... Semi-independent, trailing arm, twist axle

Brakes Power front disc / rear drum, self-adjusting

Steering Power-assisted rack and pinion with 14:1 gear ratio

Standard wheels and tires

Wheels Aluminum alloy, 14" x 6"
Tires P195/70R14 steel-belted, all-seasons blackwall radials

Overall sizes

Wheelbase 2571mm (101.2")
Overall length 4516mm (177.8")
Overall height 1324mm (52.1")
Body width 1652mm (65.0")
Tread width Front 1407mm (55.4")
Rear 1402mm (55.2")

Turning diameter

(wall-to-wall) 118M (38.8")

(curb-to-curb) 108M (35.3")
Curb weight 1250.1kg (2756.0 lbs.)

Seating capacity (front and rear) ... 2/3

Headroom front 971mm (38.2")

Headroom rear 954mm (37.6")

Legroom front 1072mm (42.2")

Legroom rear 871mm (34.3")

Hip room front 1247mm (49.1")

Hip room rear 1245mm (49.0")

Shoulder room front 1348mm (53.1")

Shoulder room rear 1349mm (53.1")

Luggage capacity ... 355.1 (12.5 cu. ft.)

Specifications as of 8-87

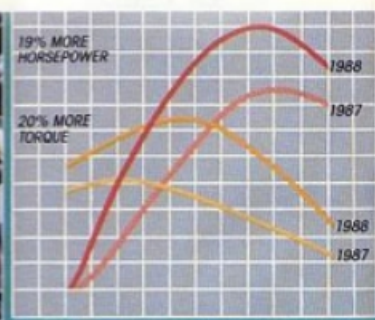
ENGINES



New low-friction pistons for increased power.



Dual-level intake system for improved engine response.



19% more horsepower, 20% more torque. Livelier response.

The new 4.5 liter DFI V8.

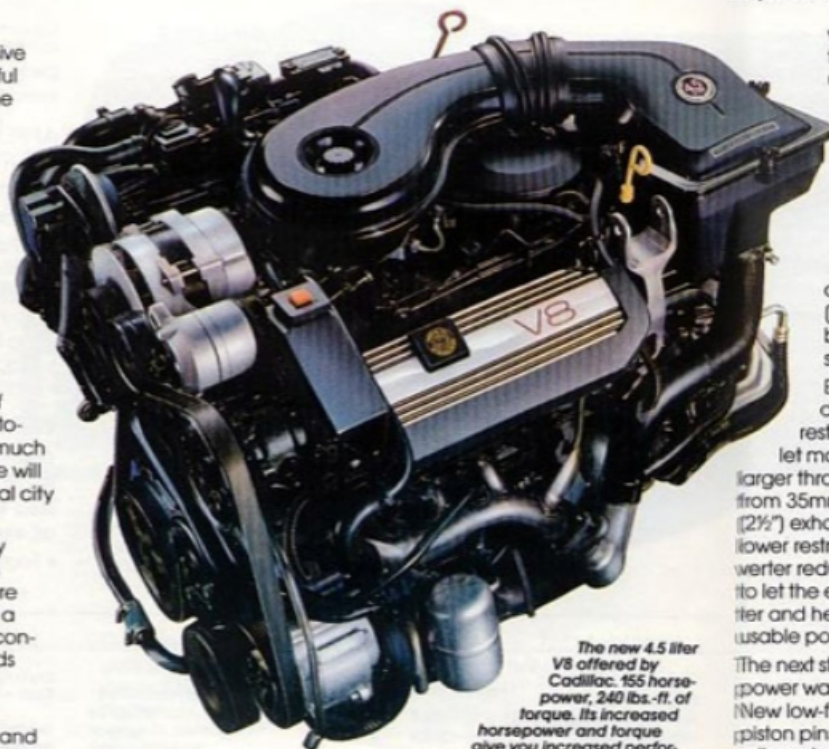
Cadillac offers an exclusive new, larger, more powerful standard V8 engine in the 1988 De Ville, Fleetwood d'Elegance, Fleetwood Sixty Special, Eldorado and Seville.

The 4.5 liter V8, with digital fuel injection (DFI), develops 155 horsepower for an improved power-to-weight ratio (over last year's standard V8) and, at 240 pounds-feet, produces the most torque of any front-wheel-drive automobile in the world. This much torque means the engine will respond eagerly in normal city driving.

It is an exceptionally lively engine; in fact, it reduces 0-60 acceleration by more than two full seconds.* As a result, you enjoy greater confidence on two-lane roads and when merging onto expressways.

Increased displacement and special refinements manifest themselves in other ways. Among them: The engine starts with authority whether it's -22°F in the dead of winter or a +120°F sweltering summer day. And once started, you drive away smoothly at these

*Results achieved by professional drivers on a test track.



The new 4.5 liter V8 offered by Cadillac. 155 horsepower, 240 lbs.-ft. of torque. Its increased horsepower and torque give you increased performance "feel" and minimizes downshifting in normal driving.

temperature extremes or any temperature in between.

The increased power means the automatic transmission downshifts far less frequently. Engineers call this "less

shift busyness." You hear and feel fewer—or no—transmission shifts. Overall, the objectives for the 4.5 liter V8 were to maintain world-class driveability

while, at the same time, increase usable power.

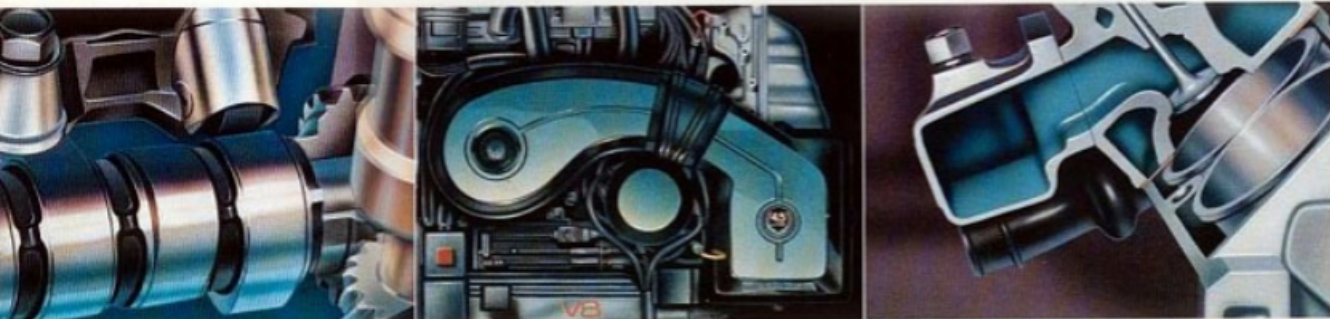
One way to increase power and low-end torque is to increase size.

Engineers increased the diameter of each cylinder a full 4mm (to 92mm). This brought the engine size up to 4.5 liters.

Engineers also designed a new low-restriction air cleaner, to let more air flow down a larger throttle body (43mm, up from 35mm). A larger-diameter (2½") exhaust system and lower restriction catalytic converter reduced back pressure to let the engine breathe better and helped increase usable power.

The next step to increase power was to reduce friction. New low-friction pistons and piston pins did just that. New roller valve lifters not only reduced friction, they helped increase power.

Reshaping the intake manifold into what's called a "dual level" design improved mid-range torque and, with it, driving response. The results are, by



New roller lifters for increased power.

New high-flow air cleaner boosts horsepower.

New low-restriction exhaust manifold boosts horsepower.

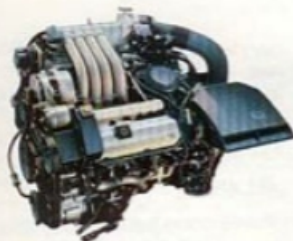
every measure, impressive: 19% more horsepower and 20% more torque than the previous engine.

As for durability, actual production engines (not prototypes) were subjected to more than one million test miles during the validation phase. This followed more than 750,000 test miles recorded during the development phase.

Scorching miles in the 120°F heat of Death Valley. Frigid miles in -22°F cold of Fairbanks, Alaska. Tortuous miles up mountain roads to 12,000 feet. All for one overriding reason: to assess reliability.

That's not all. As with the previous design, the new 4.5 liter V8's electronics systems constantly monitor every operation on the engine, taking into account such factors as outside temperature, engine temperature, barometric pressure, altitude, road speed and your driving. All to deliver consistently refined Cadillac performance.

The real payoff, however, comes when you take the wheel. You'll experience a new sense of effortless performance and smoothness that's a Cadillac hallmark.



At 170 horsepower, Cadillac's most powerful engine offering. Exclusive to Allanté.

The 4.1 liter SFI V8. Allanté's sculptured hood covers a sequential-port fuel-injected (SFI) high-output 4.1 liter V8 specially engineered for high performance.

This engine develops 170 horsepower and 235 pounds-foot of torque, which gives Allanté Cadillac's best horsepower-to-weight ratio for spirited performance.

Each engine is built to precise blueprint specifications. The goal: each part finished to exact tolerances.

Every engine undergoes a full 48-minute computer-controlled dynamometer test. This rigorous quality control is exclusive and unique in the automobile industry.

The synergistic result is high engine output.



The 140-hp. 5.0 liter V8, standard in Brougham, lets you pull 5,000 pounds - including passengers, luggage and trailer.

The 5.0 liter 4-barrel V8.

When you purchase a 1988 Brougham, you get the largest-displacement engine offered by Cadillac. The 5.0 liter gasoline V8 comes with a four-barrel carburetor, roller valve lifters (for reduced friction to help increase power), and new electronic spark control.

Electronic spark control detects poor quality gasoline (and other factors) and adjusts spark timing to optimize engine performance.

This engine develops 140 horsepower and 255 pounds-foot of torque. This torque makes the 5.0 liter V8 ideal for towing up to 5,000 pounds (including passengers, luggage and trailer) when your Brougham is equipped with the available trailering package.



The 125-horsepower 2.8 liter V6, now with direct-fire ignition, standard in Cimarron.

The 2.8 liter MFI V6. The V-design engine in the 1988 Cimarron features direct-fire ignition. This system completely eliminates the conventional mechanical distributor.

The engine also features multi-port fuel injection (MFI). Precision fuel injectors at each cylinder intake valve meter fuel according to driver and engine demand.

The intake manifold, with its six precisely tuned intake runners, ram tune intake air to give each cylinder a dense charge.

The direct-fire ignition derives its signal to fire each cylinder from precision grooves 120° apart on the engine's harmonic balancer.

The result: 125 horsepower at 4500 rpm and 160 pounds-foot of torque at 3600 rpm.

ANTI-LOCK BRAKING SYSTEM



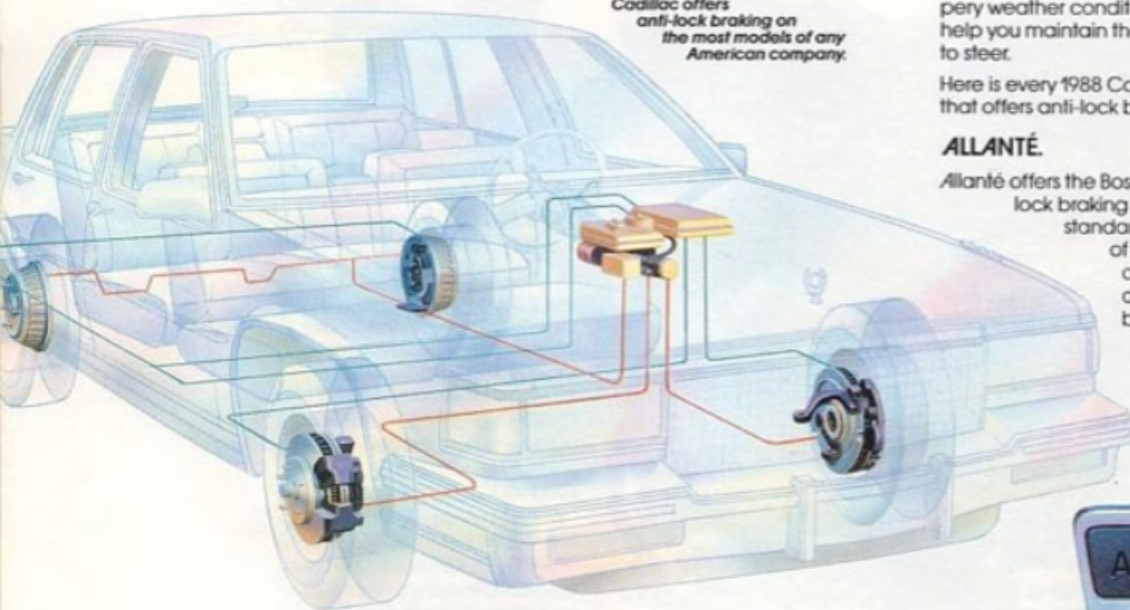
Allanté. Designed from the ground up with the Bosch III anti-lock braking system, standard.



Anti-lock braking is standard on Fleetwood Sixty Special.



Available anti-lock braking on Seville compensates for road conditions.



Cadillac offers anti-lock braking on the most models of any American company.

CADILLAC LEADERSHIP.
Cadillac offers anti-lock braking on more models than any other American company.

You may never need to utilize this feature, but there's tremendous confidence derived from knowing your Cadillac is equipped with an advanced electronic braking system that will help prevent wheel lockup. A braking system, furthermore, that can significantly reduce stopping distances under slip-

pery weather conditions and help you maintain the ability to steer.

Here is every 1988 Cadillac that offers anti-lock braking:

ALLANTÉ.

Allanté offers the Bosch III anti-lock braking system, standard. It is one of the most advanced anti-lock braking

hydraulic pump motor is mounted to the Allanté's automatic transaxle. As a result, its normal sounds rarely intrude upon the occupants.

FLEETWOOD SIXTY SPECIAL.

Fleetwood Sixty Special continues to offer the control of an advanced anti-lock braking system as standard equipment.

DE VILLE, FLEETWOOD D'ELEGANCE, ELDORADO AND SEVILLE.

You can order available anti-lock braking on all 1988 De Ville, Fleetwood d'Elegance, Eldorado and

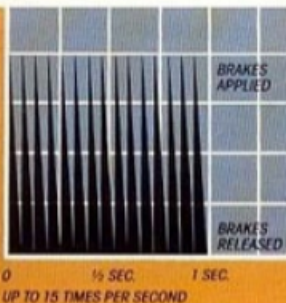
systems in production.

Allanté is unique, since it was the first automobile built with the Bosch III system designed in, rather than added on.

Among its specific refinements, for example, the

Seville models. When you do, you are getting one of the finest systems available. And you will appreciate the control that anti-lock braking offers.

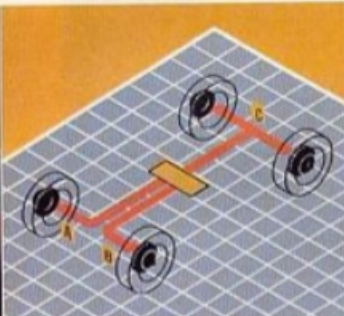




The anti-lock braking system controls brakes up to 15 times per second.



Eldorado's available anti-lock braking system takes the panic out of panic stops.



Energizing the anti-lock braking system applies the front wheel brakes (A,B) independently. Rear wheel brakes (C) are applied as a pair.



De Ville's available anti-lock braking system lets you steer while braking as hard as required.

HOW ANTI-LOCK BRAKING WORKS.

Consider a scenario where the pavement is slippery and you are driving at legal speed.

Suddenly a crate falls from a truck in front of you. Or someone opens a car door directly in your path. Your reaction may be to apply the brakes abruptly. What happens if you do takes less time than it took to read the word "what" at the beginning of this sentence.

An electronic sensor detects impending wheel lockup on the slick pavement, signaling potential skidding and the loss of steering.

Instantly, the computer-controlled anti-lock braking system begins adjusting braking pressure to each front wheel independently and the rear wheels as a pair. Further, the anti-lock braking system compensates for road conditions. One wheel might be on dry pavement, while the others might be on wet or even icy pavement.

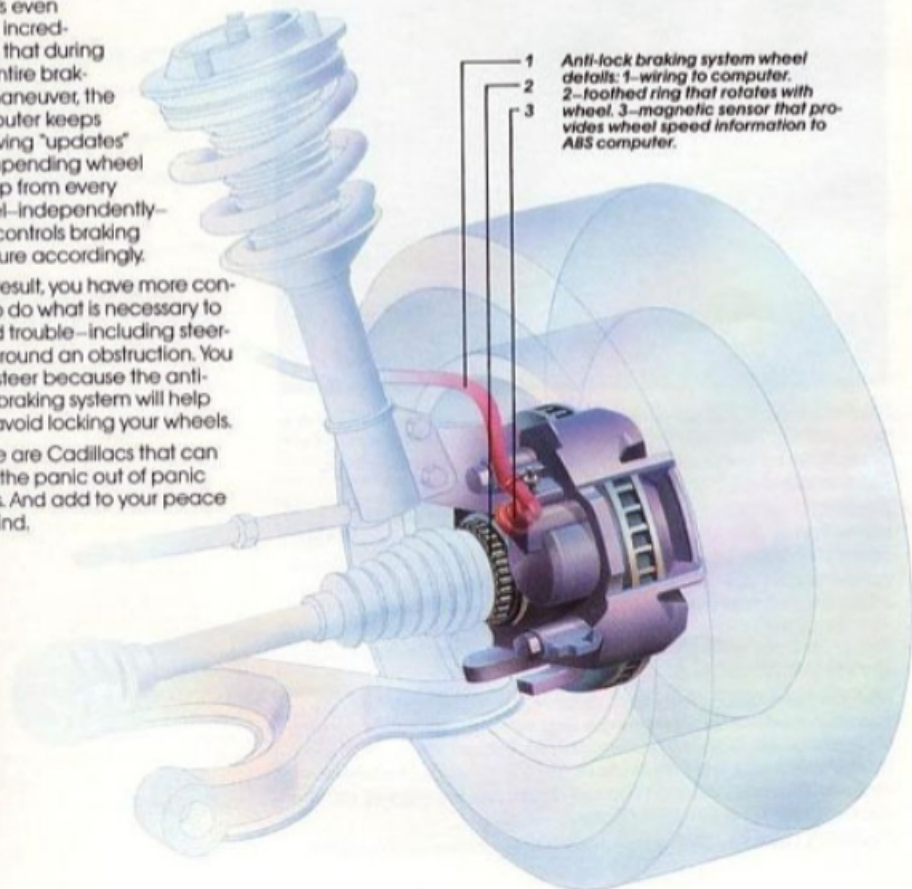
The anti-lock braking system controls the brakes up to 15 times per second—faster and more accurately than is humanly possible.

The wheels do not lock.

What's even more incredible is that during the entire braking maneuver, the computer keeps receiving "updates" on impending wheel lockup from every wheel—independently—and controls braking pressure accordingly.

As a result, you have more control to do what is necessary to avoid trouble—including steering around an obstruction. You can steer because the anti-lock braking system will help you avoid locking your wheels.

These are Cadillacs that can take the panic out of panic stops. And add to your peace of mind.



Anti-lock braking system wheel details: 1—wiring to computer. 2—toothed ring that rotates with wheel. 3—magnetic sensor that provides wheel speed information to ABS computer.

SAFETY FEATURES

OCCUPANT PROTECTION

- Manual lap/shoulder safety belts for driver and right front passenger; driver side includes visual and audible warning system
- Manual lap safety belts at each rear seat position and center front, when applicable
- Manual shoulder safety belts, outboard rear seat positions - Eldorado, Seville, Brougham
- Energy-absorbing steering column
- Energy-absorbing instrument panel
- Energy-absorbing front seat-back tops
- Laminated safety windshield glass and tempered safety side and rear window glass
- Safety interlocking door latches
- Side-guard door beam
- Passenger-guard inside door lock handles
- Inertia-locking, folding front seatbacks on two-door models
- Safety armrests
- Head restraints, driver & right front passenger (adjustable)
- Pressure lock radiator cap

ACCIDENT AVOIDANCE

- Side marker lights and reflectors
- Parking lamps that illuminate with headlamps
- Four-way hazard warning flasher
- Back-up lights
- Center high-mounted stop lamp
- Directional signal control with lane change feature
- Windshield defroster, washer and controlled-cycle wipers (three-speed wipers on Brougham)
- Inside rearview mirror
- Outside left and right rearview mirrors
- Brake system with dual master cylinder and warning light
- Starter safety switch

- Dual-action hood latch system
- Low-glare finish on inside windshield moldings, wiper arms/blades, metallic steering wheel surfaces
- Illuminated heater and defroster controls
- Illuminated windshield wiper and washer controls if on instrument panel
- Tires with built-in tread-wear indicators
- Safety road wheel rims
- Audible brake lining wear indicators, all disc brakes
- Self-adjusting brake feature
- Pressure relief fuel cap

THEFT DETERRENCE

- Audible reminder for ignition key removal
- Theft-deterrent steering column lock
- Visible vehicle identification number
- Marked body parts
- Theft-deterrent system standard on Allanté (Available on De Ville, Fleetwood d'Elegance, Fleetwood Sixty Special, Seville, Eldorado and Brougham)
- Remote inside hood release
- Theft-deterrent key system (separate ignition key)

A WORD ABOUT THIS CATALOG

We have tried to make this catalog as comprehensive and factual as possible and we hope you find it helpful. However, since the time of printing, some of the information you will find here may have been updated. Also, some of the equipment shown or described throughout this catalog is available at extra cost. Your dealer has details and, before ordering, you should ask him to bring you up to date.

The right is reserved to make changes at any time, without notice, in prices, colors, materials, equipment, specifications and models. Check with your Cadillac dealer for complete information.

A WORD ABOUT ASSEMBLY, COMPONENTS AND OPTIONAL EQUIPMENT IN THESE CADILLAC PRODUCTS

The Cadillacs described in this brochure are assembled at facilities operated by General Motors. These vehicles incorporate thousands of different components produced by car groups and various component divisions of General Motors and by various suppliers worldwide to General Motors and Pininfarina. From time to time during the manufacturing process, it may be necessary, in order to meet public demand for particular vehicles or equipment, or to meet federally mandated emissions, safety and fuel economy requirements, or for other reasons, to produce Cadillac products with different components or differently sourced components than initially scheduled. All such components have been approved for use in Cadillac products and will provide the quality performance associated with the Cadillac name.

With respect to extra cost optional equipment, make certain you specify the type of equipment you desire on your vehicle when ordering it from your dealer. Some options may be unavailable when your car is built. Your dealer receives advice regarding current availability of options. You may ask the dealer for this information. GM also requests the dealer to advise you if an option you

ordered is unavailable. We suggest that you verify that your car includes the optional equipment you ordered or if there are changes, that they are acceptable to you.

A WORD ABOUT ENGINES

Cadillacs are equipped with engines produced by GM or suppliers to GM worldwide.

UPDATED SERVICE INFORMATION

Cadillac regularly sends its dealers useful service bulletins about Cadillac products.

Cadillac monitors product performance in the field. We then prepare bulletins for servicing our products better.

Now you can get these bulletins, too. Ask your dealer. To get ordering information, call toll-free 1-800-551-4123.

ANTI-CORROSION PROTECTION

The 1988 Cadillacs are carefully designed and built to resist corrosion, so the application of additional rustproofing is neither necessary nor required. Cadillac's confidence in its extensive anti-corrosion protection is reflected in a new-vehicle warranty which includes six year/100,000-mile rust-through protection. Seven-years/100,000-miles for Allanté. See your Cadillac dealer for terms and conditions of the limited warranty.

FINANCING OR LEASING, IT'S AS EASY AS GMAC

Financing is done right in the showroom. Terms are tailored to suit your personal needs. You can choose your monthly payment date.

Let's Get It Together...Buckle Up.



UPO in U.S.A. 9/87
©1987 GM Corp.

