

EXPERIENCE  THE NEW BUICK

2 0 1 7 B U I C K  
ENVISION







Your sense of luxury has been set in  
motion with **THE NEW 2017**  
**BUICK ENVISION.**

Responsive performance, intelligent innovations and a thoughtfully  
crafted interior ensure that Envision is a joy to drive, and a joy to share.





Welcome inside Envision.

Enter a cabin where you'll come to appreciate what's meant

by the idea of **BEAUTY FROM THE INSIDE OUT.**

With a modern interior designed around a center console with innovative dual-winged doors, standard features like QuietTuning™ with Active Noise Cancellation and an available seven-speaker Bose® premium audio system, Envision creates a profound sense that you're secure, connected and truly at ease.





It only takes an instant to form your first impression  
of the Envision. One press of the accelerator proves it

has a **SPIRITED PERFORMANCE  
SUITED TO THE WAY YOU LIVE.**

A glance at its elegant proportions confirms this Buick is crafted  
to an exceptional degree of refinement. Its bold grille and jewel-like  
LED-accented headlamps reflect the pure driving enjoyment you'll experience  
in Envision. This is your kind of luxury.



## RELAX

WHAT MAKES ONE EXPERIENCE MORE REFINED THAN ANOTHER? IT'S HOW THE DETAILS ENHANCE THE SENSATIONS YOU ENCOUNTER ALONG THE WAY.

Inspiration for the Envision interior didn't come from other vehicles. It came from the kind of places you go to relax in style. Think boutique hotels, luxurious day spas and other blissfully quiet retreats. Think understated, uncluttered design, where the quality of the finishes, the exceptional materials and the ambience of the lighting give the space a special feeling. With Envision, the result is a conversation space where up to five passengers can travel in remarkable acoustic comfort, thanks to QuietTuning—a systematic process designed to help reduce, block and absorb unwanted noise. You'll be in the perfect frame of mind to enjoy Envision's full complement of features.

- Premium soft-touch materials throughout, rich trim and ice-blue ambient lighting.
- Standard hands-free power liftgate, 60/40 fold-flat rear seats and a flat rear floor make loading your belongings easy.
- Standard eight-way adjustable driver and front-passenger seats with power lumbar.
- Available French stitched, leather-appointed seats.
- Available cooled and ventilated front seats.
- Available tri-zone HVAC automatic climate control system, standard sliding second-row seating with three seatback angles and available heated rear outboard seats.
- Available seven-speaker Bose premium audio system.








How does QuietTuning with Active Noise Cancellation work? By counteracting engine noise and helping to reduce outside noise with laminated glass in the windshield and front side windows. By forming a shield using inner-door sound barriers and triple door seals. By using hydraulic top engine mounts to help absorb engine noise and vibration before it gets to the cabin and by using seating materials that absorb noise.



A photograph of a man and a woman sitting in the front seats of a car. The woman, on the right, has long, wavy reddish-brown hair and is smiling broadly, looking towards the man. The man, on the left, has short dark hair and a beard, and is also smiling, looking towards the woman. The car's interior, including the dashboard and windows, is visible in the background, which is softly blurred. The lighting is warm and natural, suggesting daylight.

It's something of a lost art, the art of conversation.  
Thanks to QuietTuning, Envision celebrates it by inviting you  
into a sanctuary where conversations can flourish.



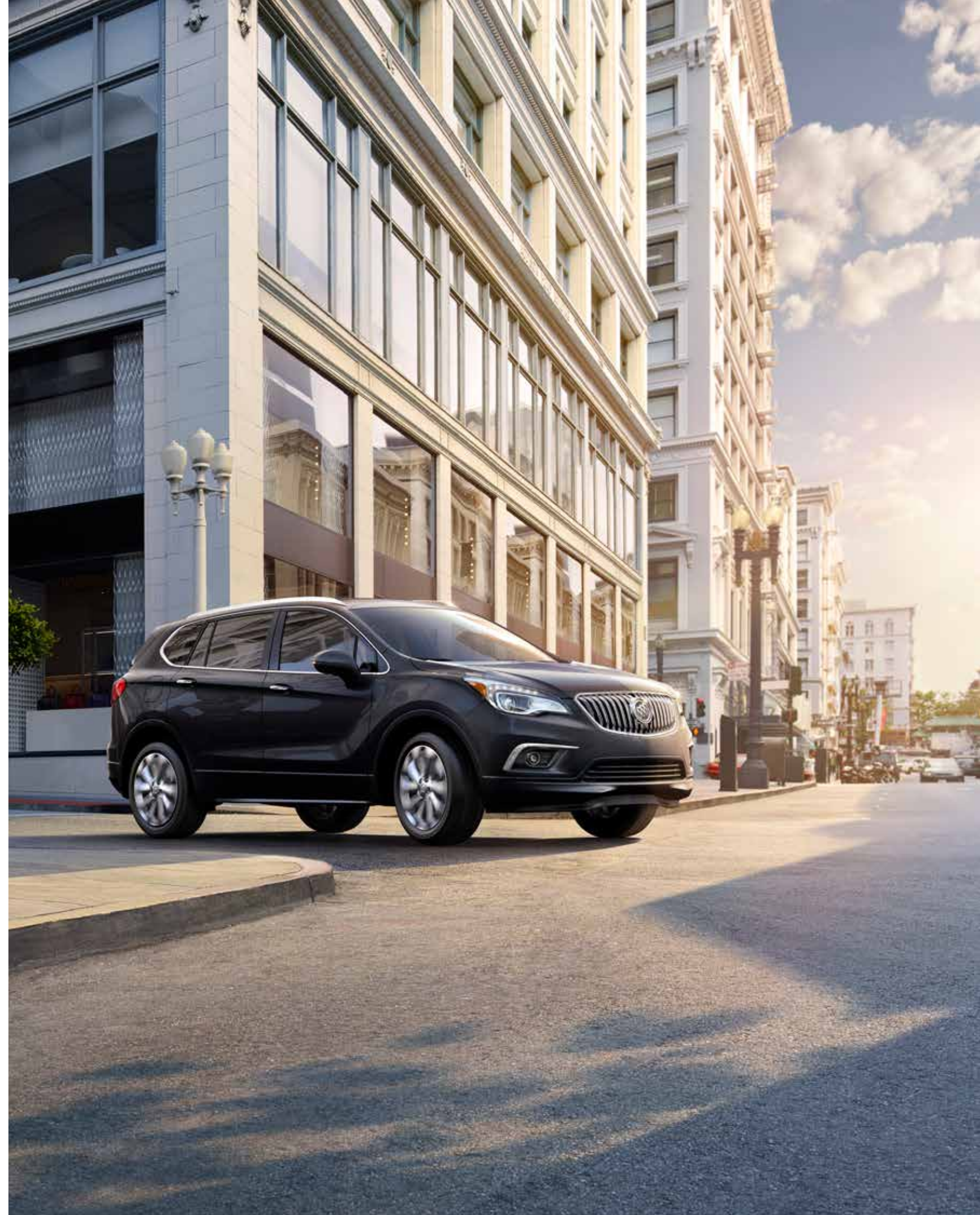
## RESPOND

IN THE 2017 ENVISION, ADVANCED ENGINEERING SYSTEMS CREATE A NEW FEELING OF CONFIDENCE AND CONTROL FOR THE DRIVER.

What forges the connection between a car and its driver? It starts with how well a vehicle responds to driver input—the turn of a steering wheel, the press of a brake pedal, the voice command for your phone. Apple CarPlay™<sup>1</sup> integrates seamlessly with your iPhone®, and Android Auto™<sup>2</sup> works with your compatible smartphone. As you settle into the heated driver's seat, your hands wrap around the thick leather-wrapped rim of the available heated steering wheel, and your eyes scan the gauges laid out in front of you. Now engage the Start button and feel the powerful response of Envision's available turbocharged engine. Ready for the best feeling of all? Move the shift lever into drive. Your every move is met by an available intelligent All-Wheel Drive with Active Twin-Clutch System, helping ensure sure-footed traction.

- An efficient and spirited 2.5L engine with 197 hp is standard. Or choose the available 2.0L Turbo engine with 252 hp and 260 lb-ft of torque to turbocharge every drive.
- The available intelligent All-Wheel Drive with Active Twin Clutch automatically adjusts torque to each wheel to optimize traction and respond before slip occurs.
- Envision's tight turning radius makes for nimble maneuvers and easy parking.
- The available HiPer Strut front suspension provides Envision with responsive steering and cornering while it helps dampen road noise and vibration.
- Safety features and driver convenience alerts that are available include Forward Collision Alert, Side Blind Zone Alert with Lane Change Alert, Rear Cross Traffic Alert, Lane Keep Assist with Lane Departure Warning, Front and Rear Park Assist and a Safety Alert Seat, while 10 air bags<sup>2</sup> and a Rear Vision Camera are standard.

<sup>1</sup>Vehicle user interfaces are products of Apple® and Google® and their terms and privacy statements apply. Requires compatible smartphone. Data plan rates apply. <sup>2</sup>A NOTE ON CHILD SAFETY: Always use safety belts and the correct child restraint for your child's age and size, even with air bags. Even in vehicles equipped with the Passenger Sensing System, children are safer when properly secured in a rear seat in the appropriate infant, child or booster seat. Never place a rear-facing infant restraint in the front seat of any vehicle equipped with an active frontal air bag. See your vehicle Owner's Manual and child safety seat instructions for more safety information.







# LISTEN

LET YOUR VOICE BE HEARD. IT'S ALL YOU NEED TO ACTIVATE FEATURES OF ENVISION'S ADVANCED AUDIO AND INTEGRATED SMARTPHONE SYSTEMS.

The 2017 Envision offers Apple CarPlay™ and Android Auto compatibility.<sup>1</sup> With Apple CarPlay,™ some of the apps you love on your iPhone® come alive through Siri® or the built-in display. And Android Auto easily integrates some of the power and functionality of your Android™ phone into Envision.

We made Envision quiet because we knew you wanted to hear what makes you happy. That's where Buick IntelliLink<sup>2</sup> comes in. It includes available audio features that let you stream files from your music apps. You can even use the "More Like This" function to instantly create a playlist of songs or artists similar to the one you're listening to.

**INTUITIVE CONTROLS** Many of the features found on the latest version of Buick IntelliLink<sup>2</sup> can be managed three ways: using the Color Touch Radio screen, intuitive natural-language voice commands or steering-wheel-mounted controls. And there's more that IntelliLink can do to help you organize life on the road.

**BUICK INTELLILINK<sup>2</sup>** offers the entertainment of SiriusXM Satellite Radio<sup>3</sup> with Travel Link, with more than 140 channels, including commercial-free music, plus talk, sports, news, weather and more. And IntelliLink's customizable app tray allows you to organize the home screen according to your preferences.

<sup>1</sup>Vehicle user interfaces are products of Apple® and Google and their terms and privacy statements apply. Requires compatible smartphone. Data plan rates apply. <sup>2</sup>Full functionality requires compatible Bluetooth® and smartphone. Some devices require USB connectivity. <sup>3</sup>SiriusXM audio and data services each require a subscription sold separately, or as a package, by SiriusXM Radio, Inc. If you decide to continue service after your trial, the subscription plan you choose will automatically renew thereafter and you will be charged according to your chosen payment method at then-current rates. Fees and taxes apply. To cancel, you must call SiriusXM at 1-866-635-2349. See SiriusXM Customer Agreement for complete terms at [siriusxm.com](http://siriusxm.com). All fees and programming subject to change. Sirius, XM, SiriusXM and all related marks and logos are trademarks of SiriusXM Radio, Inc.



## GUIDE

TRAVEL WITH THE ENVISION AND YOUR JOURNEY IS ACCOMPANIED BY A HOST OF AVAILABLE SAFETY INNOVATIONS.

On the 2017 Envision, the available Surround Vision Camera system uses four micro-cameras embedded in the vehicle to provide the driver with a bird's-eye view around the vehicle. When you're parking, checking the monitor can help you avoid obstacles in your blind spots and navigate tight spaces. And when you're driving down the road, available cameras, sensors and radar are at work watching out for you. Available Forward Collision Alert uses the cameras and radar to detect a potential collision with another vehicle on the road in front of you. If it senses that the driver isn't braking to avoid a collision, available Front Automatic Braking automatically engages the brakes. New for 2017, Teen Driver technology supports safe driving habits by muting the audio of the radio or any device paired with the vehicle when front-seat occupants aren't wearing their safety belts. Plus, it gives audible and visual warnings when Envision is traveling faster than preset speeds.



- **AVAILABLE SURROUND VISION CAMERA** A first for Buick, it provides a bird's-eye view of what's around you during low-speed maneuvering. Multiple cameras help you avoid obstacles, reduce blind spots and navigate even the tightest spaces with clarity and confidence.



- **AVAILABLE SAFETY ALERT SEAT** When a collision-avoidance technology such as available Lane Departure Warning triggers an alert, the Safety Alert Seat issues a warning of its own. The left and/or right side of the driver seat cushion gently vibrate to signal the direction of the approaching hazard. So, it can help you stay aware of your surroundings.



- **REAR VISION CAMERA WITH REAR CROSS TRAFFIC ALERT** To help you better navigate while backing up, the Rear Vision Camera shows you guidelines and live images of what's behind you on the 8-inch diagonal Color Touch Radio screen.





## MANEUVER

ENVISION IS A NIMBLE SUV WITH INGENIOUS TECHNOLOGIES SUCH AS AUTOMATIC PARK ASSIST.

Available Automatic Park Assist uses ultrasonic sensors and clear driver cues to steer Envision into parallel and perpendicular parking spaces. Sensors search for an available space. Once engaged and in reverse, the system automatically steers into the space while you control the brake and shift lever. Here are other ways Envision helps you maneuver.

---

**REAR CROSS TRAFFIC ALERT** When you're backing out of a parking space, available Rear Cross Traffic Alert technology uses radar to detect vehicles approaching your Envision and alerts you if detected vehicles are within 65 feet of either side of your vehicle.

**FORWARD COLLISION ALERT** This available technology can help you to prevent frontal crashes by sensing when you are approaching a vehicle in front of you too quickly, and it alerts you with audible and visual warnings and vibration from the available Safety Alert Seat.

**FRONT AUTOMATIC BRAKING** Available Front Automatic Braking technology senses when a crash is imminent and then can automatically brake to help you reduce crash damage or help avoid colliding with the vehicle ahead in some low-speed situations.

**SIDE BLIND ZONE ALERT WITH LANE CHANGE ALERT** Available Side Blind Zone Alert issues a visual warning when a vehicle enters your blind zone. Available Lane Change Alert uses radar to help watch for and warn you of vehicles approaching from behind when you're changing lanes.

**LANE KEEP ASSIST WITH LANE DEPARTURE WARNING** To help drivers avoid unintentionally drifting out of their lane, available Lane Keep Assist provides gentle steering wheel turns, and if necessary, audible and visual lane-departure alerts.

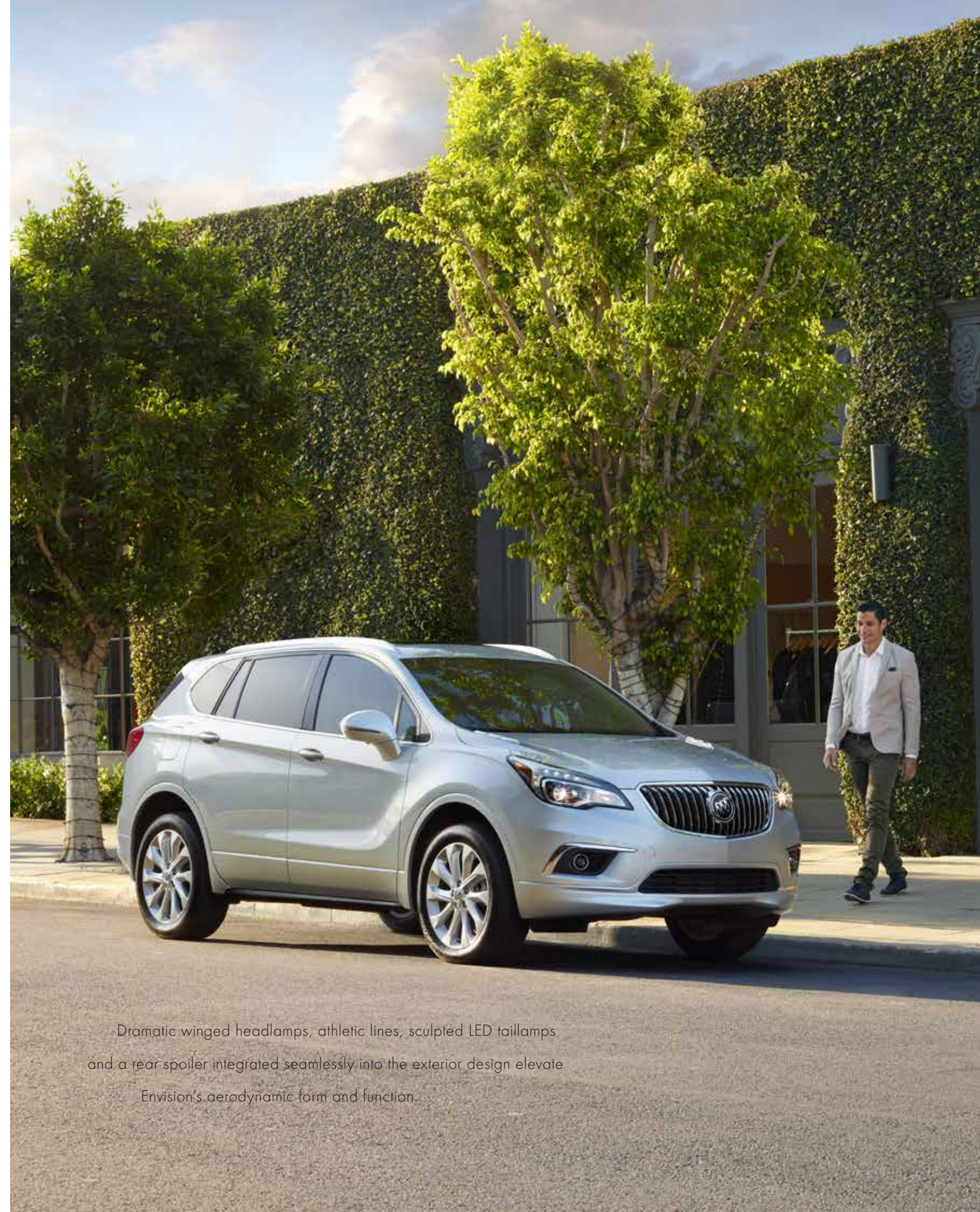
These safety features are no substitute for the driver's responsibility to operate the vehicle in a safe manner. The driver should remain attentive to traffic, surroundings and road conditions at all times. Read the vehicle Owner's Manual for important feature limitations and information.



## ACCESS

A HANDS-FREE POWER LIFTGATE OPENS AND CLOSES AUTOMATICALLY TO MAKE LIFE A LITTLE EASIER.

You know that moment when you realize you need an extra hand? Well, help is now here, thanks to Envision's hands-free power liftgate. This standard feature allows you to open and close Envision's liftgate simply by moving your foot under a sensor beneath the rear bumper. As long as your Envision's keyless entry fob is in your possession, this convenience is always there for you when you find your hands full. And if we know you, that's a situation you find yourself in all the time.



Dramatic winged headlamps, athletic lines, sculpted LED taillamps and a rear spoiler integrated seamlessly into the exterior design elevate Envision's aerodynamic form and function.





## CONNECT

THE AVAILABLE WI-FI® HOTSPOT<sup>1</sup> PROVIDES A MORE POWERFUL CONNECTION THAN A SMARTPHONE OR MOBILE HOTSPOT.

Available 4G LTE Wi-Fi now travels with you. Stay connected and move effortlessly from home to work to just about anywhere without losing touch. Stream movies and TV on the go, using your favorite apps on your Wi-Fi devices.

The built-in Wi-Fi hotspot<sup>1</sup> supports up to seven devices, so everyone can surf, scan, create, post and game their way through any journey at 4G speed.<sup>2</sup>

Any time your vehicle is on, your hotspot is available and ready to connect to your devices, so it's easy to use. Our strong signal means you have a fast and reliable connection. And because the built-in Wi-Fi hotspot is powered by your vehicle, you're not reliant on your mobile device battery.

Your first 3 months or 3GB of data (whichever comes first) are included with your new Buick. After that, select a plan from OnStar that's right for you.

Not sure how much data you need for your in-vehicle Wi-Fi hotspot? Our data calculator ([att.com/att/onstardatacalc](http://att.com/att/onstardatacalc)) will help you estimate data usage for email, streaming music, social media and more.

<sup>1</sup>Requires a compatible mobile device, active OnStar service and data plan. 4G LTE service available in select markets. Visit [onstar.com](http://onstar.com) for coverage map, details and system limitations. Data plan provided by AT&T® <sup>2</sup>Data service provided by AT&T. See [onstar.com](http://onstar.com) for 4G LTE coverage availability.



# ONSTAR

STANDARD FOR 3 MONTHS, THE ONSTAR GUIDANCE PLAN<sup>1</sup> SERVICE TRIAL (TRIAL EXCLUDES HANDS-FREE CALLING MINUTES) LETS YOU CONNECT TO A SPECIALLY TRAINED ONSTAR ADVISOR JUST BY PUSHING THE BLUE ONSTAR BUTTON IN YOUR ENVISION.



**EMERGENCY Automatic Crash Response<sup>2</sup>** This feature can connect you to an OnStar Advisor immediately after a crash to help get you the care you need, even if you can't ask for it. Using Injury Severity Prediction technology, Advisors can help you get the right care right away.

**Emergency Services** One push of the red emergency button gives you a priority connection to an OnStar Advisor who can direct emergency services to your exact location and offer critical assistance until help arrives. With OnStar, you're never alone.

**Crisis Assist** In severe weather conditions or a crisis, Advisors can provide a fast, knowledgeable resource if you need emergency assistance, evacuation routes and other resources. OnStar can also contact family members for you.

**Roadside Assistance<sup>3</sup>** If you're stranded, have a flat tire or need a tow truck, just ask an OnStar Advisor to get help to your exact location to get you back on the road quickly.

**SECURITY Stolen Vehicle Assistance<sup>4</sup>** If your car is stolen, Advisors working with the appropriate authorities can pinpoint its location, slow the vehicle if conditions are safe and even prevent it from being restarted. And with Theft Alarm Notification, if your car alarm sounds, we'll let you know via text, email and/or a phone call. One simple call puts a team into action to help recover your car quickly and safely.

**NAVIGATION Turn-by-Turn Navigation<sup>5</sup>** Getting directions is as easy as pushing a button and telling an Advisor where you want to go. Directions are quickly downloaded to your car, and a voice calls out every turn. An Advisor can also help you with a database of more than 14 million points of interest. To plan routes in advance, you can send destinations to your vehicle through an Advisor or the myBuick mobile app.<sup>6</sup>

**ATYOURSERVICE<sup>7</sup>** Discover value on everyday purchases while on the go. Get easy access to offers at restaurants, gas stations, retail stores and more. AtYourService offers can

be accessed from your vehicle's radio touch-screen (if available), through your myBuick mobile app<sup>6</sup> or an OnStar Advisor.

**VEHICLE MANAGER Advanced Diagnostics<sup>8</sup>** This feature can alert you when something's going on under the hood. Diagnostic Alerts can send you a monthly report or real-time alerts available by email or text, detailing its findings. And with Proactive Alerts (if available), you can get a warning about potential issues with key components such as the battery, fuel pump, fuel pressure sensor and starter motor before they become a problem.

**MYBUICK MOBILE APP<sup>6</sup>** Enjoy the ultimate ownership experience through convenient control and management of your vehicle from almost anywhere. If properly equipped, you can remotely start your vehicle, locate your vehicle on a map, lock or unlock your doors, send destinations to your car, honk your horn and flash your lights. The services of the myBuick mobile app are included for 5 years on new vehicles.

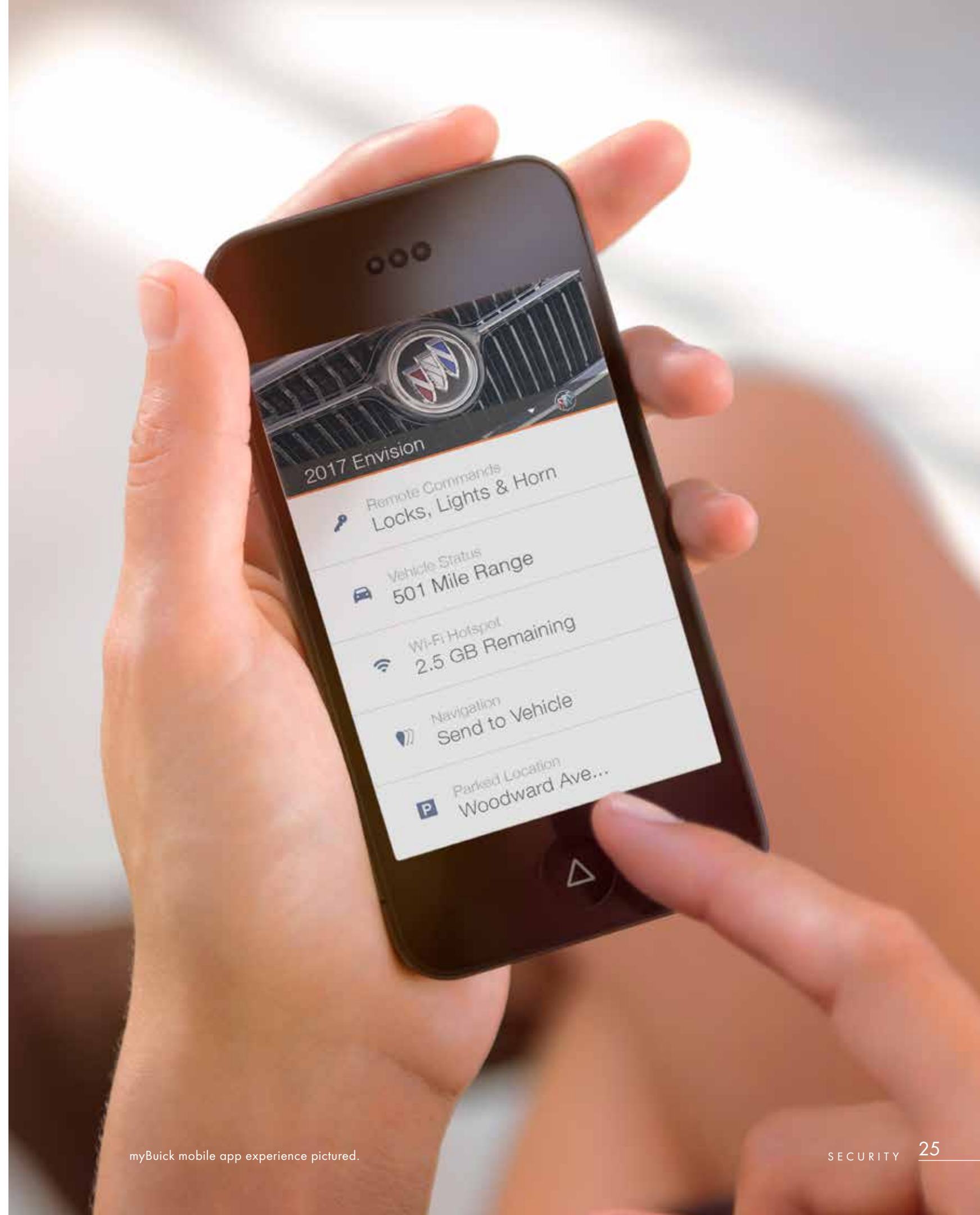
To download the myBuick mobile app to your smartphone, go to the App Store of iTunes<sup>®</sup> or Google Play.<sup>™</sup>

**ONSTAR SMART DRIVER<sup>9</sup>** Now your vehicle can help make you a smarter driver. OnStar Smart Driver provides information about your driving behavior to help maximize your vehicle's overall performance, reduce wear and tear, monitor fuel efficiency and help you become a better driver. You can review your report and after 90 days, you can choose to share it anonymously with participating insurance providers.

**REMOTE ACCESS<sup>10</sup>** With Remote Access, an OnStar Advisor can send a remote signal to lock or unlock your doors or honk your horn and flash your lights. If properly equipped, you can even use your myBuick mobile app<sup>6</sup> to remote-start the vehicle from virtually anywhere.

**ONSTAR HANDS-FREE CALLING<sup>11</sup>** This feature is a wireless service built into your vehicle so you can easily and safely make and receive calls from the road. You must purchase calling minutes to get this service.

<sup>1</sup>Visit onstar.com for coverage map, details and system limitations. <sup>2</sup>Visit onstar.com for vehicle availability, details and system limitations. OnStar acts as a link to existing emergency service providers. Not all vehicles may transmit all crash data. <sup>3</sup>Roadside service provided by Allstate Roadside Services. <sup>4</sup>Services vary by model and conditions. Visit onstar.com for vehicle availability, details and system limitations. Theft Alarm Notification features vary by make and model. Requires factory-installed theft-deterrent system, Security or Guidance Plan and selection of notification communication preference(s). Vehicles must be locked electronically to arm the factory-installed theft-deterrent system. Messaging and data rates apply. <sup>5</sup>Requires Guidance or Navigation Add-On Plan. Visit onstar.com for coverage map. Services vary by model. <sup>6</sup>Requires data plan, compatible vehicle and device. Some features require factory-installed remote start, power locks, Tire Pressure Monitoring System or active OnStar service. <sup>7</sup>Not available on Basic Plan. Valid offers can vary. Check AtYourService through the myBuick mobile app for latest offers. <sup>8</sup>Capabilities vary by model. Visit onstar.com for details and system limitations. Message and data rates may apply. Requires active OnStar service, email address on file and enrollment in Advanced Diagnostics. Proactive Alerts are designed to help predict specific types of issues based on information collected from the vehicle. Other factors may affect vehicle performance. Not all issues will deliver alerts. In certain scenarios, a dealer service check may be required to confirm the accuracy of the Proactive Alert. <sup>9</sup>OnStar, General Motors and their affiliates are not insurance providers, nor do they endorse insurance providers. You should obtain insurance only from licensed insurance providers. <sup>10</sup>Visit onstar.com for coverage map, details and system limitations. Services vary by model and conditions. Unlock feature requires automatic locks. Remote Start requires a factory-installed remote-start system. <sup>11</sup>OnStar Hands-Free Calling requires an existing OnStar service contract and available minutes. Not available in certain markets. Visit onstar.com for coverage map, details and system limitations.



myBuick mobile app experience pictured.





## PERSONALIZE

COLOR AND WHEEL SELECTION IS SIMPLE WITH ENVISION.

### EXTERIOR COLORS

SUMMIT WHITE<sup>1</sup>



GALAXY SILVER METALLIC<sup>2</sup>



CHILI RED METALLIC<sup>2</sup>



MIDNIGHT AMETHYST METALLIC<sup>2</sup>



EBONY TWILIGHT METALLIC<sup>2</sup>



BRONZE ALLOY METALLIC<sup>2</sup>



### WHEELS



RQH 18" 10-SPOKE ALUMINUM



PZW 18" 10-SPOKE POLISHED ALUMINUM



RT7 19" 10-SPOKE ALUMINUM WITH PREMIUM MANOJIAN FINISH

<sup>1</sup>Only available on base Envision. <sup>2</sup>Additional charge, premium paint. No-cost option on Preferred.



# SELECT

PREMIUM MATERIAL SELECTION IS SIMPLE WITH ENVISION.

## INTERIOR TRIM

LIGHT NEUTRAL WITH EBONY ACCENTS CLOTH OR LEATHER-APPOINTED SEATING



EBONY WITH EBONY ACCENTS LEATHER-APPOINTED SEATING



EBONY WITH DARK PLUM ACCENTS LEATHER-APPOINTED SEATING



CHESTNUT BROWN WITH EBONY ACCENTS LEATHER-APPOINTED SEATING





## STANDARD EQUIPMENT ON ENVISION

### POWER AND PERFORMANCE

**Drivetrain** Front-Wheel Drive  
**Engine** 2.5L DOHC SIDI with VVT  
**Transmission** 6-speed automatic with Driver Shift Control  
**Suspension** Front MacPherson strut  
**Axle** 3.50 final drive ratio  
**Steering** Power electric  
**Brakes** 4-wheel power anti-lock, 4-wheel disc (17" front, 16" rear)  
**Parking Brake** Electronic  
**Exhaust** Single-outlet stainless steel  
**StabiliTrak** Stability control system includes traction control

### COMFORT AND CONVENIENCE

**Active Noise Cancellation**  
**Cabin Air Filtration System**  
**Air Conditioning** Dual-zone automatic climate control  
**Cruise Control** Electronic  
**Cupholders** 2 front, 2 in rear armrest  
**Defogger** Rear window  
**Driver Information Center** Enhanced 4.2" diagonal color configurable display  
**E-Z Key Passive Entry System** Extended range with keyless start and automatic door lock/unlock  
**Floor Mats** Carpeted front and rear  
**Power Outlets** 12-volt covered, 1 front, 1 rear, 1 cargo area  
**Liftgate** Power hands-free open and close, programmable  
**Lighting** Interior ambient lighting  
**Park Assist** Ultrasonic, rear  
**Push-Button Start**  
**QuietTuning** Buick process to reduce, block and absorb noise and vibration

**Seat Trim** Cloth with leatherette accents  
**Seating** Heated driver and front passenger  
**Seats** Front bucket, rear 60/40 split-folding reclining and sliding with one-touch flat folding  
**Seat Adjuster** Driver and front-passenger 8-way power with power lumbar  
**Shift Knob** Leather-wrapped  
**Steering Wheel** Leather-wrapped with audio controls, phone controls, Driver Information Center and vehicle controls  
**Visors** Illuminated driver and front passenger  
**Windows** Power front express-up and -down and rear with express-down

### ENTERTAINMENT SYSTEMS

**OnStar 4G LTE and Built-in Wi-Fi® Hotspot<sup>1</sup>** For up to 7 devices. Includes data trial for 3 months or 3GB, whichever comes first.  
**Audio System** Buick IntelliLink<sup>2</sup> with AM/FM, 8" diagonal high-resolution color touch-screen, MP3 playback, auxiliary port and 2 USB ports<sup>3</sup>  
**Buick IntelliLink<sup>2</sup>** Smartphone control via voice activation and steering-wheel-mounted controls. It also enables streaming stereo audio from the phone through available services such as Pandora® internet radio<sup>4</sup> and Gracenote.<sup>5a</sup>  
**Apple CarPlay™ and Android Auto™ Compatibility<sup>5</sup>**  
**SiriusXM Satellite Radio<sup>6</sup>** Includes 3 trial months of service. For more information, visit siriusxm.com.  
**Speakers** Premium 6-speaker system  
**USB Ports<sup>3</sup>** 2 connectivity ports in the center console for various digital media devices and MP3 player support. Dual, charging only, located in the rear of the center console.  
**Bluetooth®<sup>7</sup>** Personal cell phone connectivity to vehicle audio system

### SAFETY AND SECURITY

**10 Air Bags<sup>8</sup>** Single-stage driver and dual-stage front-passenger frontal, driver and front-passenger knee, front and rear side-impact and roof rail for outboard seating  
**LATCH System** Lower Anchors and Top tethers for Children safety seats  
**OnStar Guidance Plan<sup>9</sup> Service Trial** (Trial excludes Hands-Free Calling minutes.) Includes 3 months of Automatic Crash Response, Advanced Diagnostics and more.  
**OnStar Basic Plan<sup>10</sup>** For 5 years. Includes select features of the myBuick mobile app,<sup>11</sup> including remote start, door lock or unlock, honk your horn and flash your lights. Limited OnStar services include Advanced Diagnostics.  
**Rear Vision Camera**

### STYLING AND FUNCTIONALITY

**Daytime Running Lamps** LED-accented signature lighting  
**Door Handles** Body-color with chrome accent  
**Glass** Deep-tinted  
**Headlamps** Halogen projector-beam with automatic headlamp control  
**Mirrors** Outside heated, power-adjustable  
**Fog Lamps**  
**Wipers** Front intermittent  
**Wheels** RQH 18" 10-spoke painted aluminum

### SPECIFICATIONS AND CAPACITIES

Engine Type	2.5L 4-cylinder SIDI w/VVT
Horsepower	197 @ 6300 rpm
Torque	192 lb-ft @ 4400 rpm
Engine Type	2.0L Turbo w/VVT
Horsepower	252 @ 5500 rpm
Torque	260 lb-ft @ 2000 rpm
EPA-estimated mpg	22 city/29 hwy 2.5L FWD 21 city/28 hwy 2.5L AWD 20 city/26 hwy 2.0L AWD
Cargo Volume, rear seat up (cu. ft.) <sup>13</sup>	26.9
Cargo Volume, rear seat down (cu. ft.) <sup>13</sup>	57.3
Fuel Tank, Gallons (approx.)	17.3
Curb Weight (lbs)	3755 FWD 3929 AWD

## PREFERRED

INCLUDES ALL STANDARD EQUIPMENT ON ENVISION

AVAILABLE OPTIONS ON PREFERRED:

**All-Wheel Drive**

## ESSENCE

INCLUDES ALL STANDARD EQUIPMENT ON PREFERRED PLUS:

**Air Conditioning** Tri-zone automatic climate control  
**Memory Settings** For driver seat, mirrors and driver personalization  
**Rear Cross Traffic Alert**  
**Side Blind Zone Alert with Lane Change Alert**  
**Seat Trim** Perforated leather-appointed  
**Seating** Heated rear outboard positions  
**Luggage Rack** Roof rails, chrome  
**Wheels** PZW 18" 10-spoke polished aluminum  
**Steering Wheel** Heated

AVAILABLE OPTIONS ON ESSENCE:

**All-Wheel Drive**  
**Audio System with Navigation<sup>12</sup>** IntelliLink<sup>2</sup> with AM/FM, 8" diagonal high-resolution color touch-screen, MP3 playback, GPS navigation, auxiliary port and 2 USB ports<sup>3</sup>  
**Moonroof** Panoramic, tilt-sliding

## PREMIUM

INCLUDES ALL STANDARD EQUIPMENT ON ESSENCE PLUS:

**Drivetrain** Intelligent All-Wheel Drive with Active Twin Clutch  
**Engine** 2.0L Turbo DOHC SIDI with VVT  
**Differential** Automatic locking rear, twin clutch  
**Suspension** Front HiPer Strut  
**Axle** 3.17 final drive ratio  
**Brakes** 4-wheel power anti-lock, 4-wheel disc (17" front and rear)  
**Exhaust** Dual stainless steel with bright tips  
**Speakers** Bose® premium 7-speaker system with amplifier  
**Driver Information Center** Enhanced 8" diagonal color configurable display  
**Following Distance Indicator**  
**Forward Collision Alert**  
**Lane Keep Assist with Lane Departure Warning**  
**Power Outlet** 1 120V, 400W rear center console  
**Safety Alert Seat** Driver  
**Park Assist** Ultrasonic, front and rear  
**Wheels** RT7 19" 10-spoke aluminum with premium Manooagian silver finish  
**Wipers** Front intermittent, Rainsense

AVAILABLE OPTIONS ON PREMIUM:

**Audio System with Navigation<sup>12</sup>**  
**Moonroof** Panoramic, tilt-sliding

## PREMIUM II

INCLUDES ALL STANDARD EQUIPMENT ON PREMIUM PLUS:

**Audio System with Navigation<sup>12</sup>**  
**Head-Up Display**  
**Seats** Driver-adjustable thigh support, ventilated and cooled driver and front passenger  
**Headlamps** Articulating projector-beam, High-Intensity Discharge (HID), IntelliBeam auto high-beam control and Automatic Leveling System  
**Automatic Park Assist** Parallel and perpendicular parking

AVAILABLE OPTIONS ON PREMIUM II:

**Driver Confidence Package** Includes Adaptive Cruise Control, Surround Vision and Front Automatic Braking  
**Moonroof** Panoramic, tilt-sliding

## SPECIFICATIONS

### DIMENSIONS (INCHES)

Wheelbase	108.3
Overall length	183.7
Body width	72.4
Overall height	66.8
Track width, front	62.0
Track width, rear	62.0
Head room, front	40.0

Head room, rear	38.5
Shoulder room, front	57.0
Shoulder room, rear	55.8
Hip room, front	54.4
Hip room, rear	53.1
Leg room, front	40.9
Leg room, rear	37.5

<sup>1</sup>Requires a compatible mobile device, active OnStar service and data plan. 4G LTE service available in select markets. Visit onstar.com for coverage map, details and system limitations. Data plan provided by AT&T.<sup>®</sup> <sup>2</sup>Full functionality requires compatible Bluetooth and smartphone. Some devices require USB connectivity. Data plan rates apply. <sup>3</sup>Not compatible with all devices. <sup>4</sup>Data plan rates apply. <sup>5</sup>Vehicle user interfaces are products of Apple® and Google® and their terms and privacy statements apply. Requires compatible smartphone. Data plan rates apply. <sup>6</sup>If you decide to continue service after your trial, the subscription plan you choose will automatically renew thereafter and you will be charged according to your chosen payment method at then-current rates. Fees and taxes apply. To cancel, you must call SiriusXM at 1-866-635-2349. See SiriusXM Customer Agreement for complete terms at siriusxm.com. All fees and programming subject to change. For more information about NavTraffic, visit siriusxm.com/navtraffic. For more information about Travel Link, visit siriusxm.com/travellink. Sirius, XM, SiriusXM and all related marks and logos are trademarks of SiriusXM Radio, Inc. <sup>7</sup>Go to my.buick.com/learn to find out which phones are compatible with the vehicle. <sup>8</sup>A NOTE ON CHILD SAFETY: Always use safety belts and the correct child restraint for your child's age and size, even with air bags. Even in vehicles equipped with the Passenger Sensing System, children are safer when properly secured in a rear seat in the appropriate infant, child or booster seat. Never place a rear-facing infant restraint in the front seat of any vehicle equipped with an active frontal air bag. See your vehicle Owner's Manual and child safety seat instructions for more safety information. <sup>9</sup>Visit onstar.com for coverage map, details and system limitations. OnStar acts as a link to existing emergency service providers. <sup>10</sup>Does not include emergency or security services. Visit onstar.com for coverage map, details and system limitations. <sup>11</sup>Requires data plan, compatible vehicle and device. Some features require factory-installed remote start, power locks, Tire Pressure Monitoring System or active OnStar service. <sup>12</sup>Map coverage available in the United States, Puerto Rico and Canada. <sup>13</sup>Cargo and load capacity limited by weight and distribution.





## IMPORTANT WORDS ENVISION INFORMATION.



Since some information may have been updated since the time of printing, please check with your Buick dealer for complete details. Buick reserves the right to lengthen or shorten the model year for any product for any reason, or to start and end model years at different times.

**NEW-VEHICLE LIMITED WARRANTY** This warranty is for GM vehicles registered in the USA. See your Buick dealer for terms and conditions.

4 years/50,000 miles (whichever comes first): Bumper-to-Bumper Limited Warranty. The entire vehicle is warranted for repairs, including parts and labor, to correct defects in materials or workmanship. The warranty covers towing to the nearest Buick dealership, and there is no deductible for warranty repairs during the warranty period. The warranty transfers automatically with vehicle ownership during the warranty period.

6 years/70,000 miles (whichever comes first): Transferable Powertrain Limited Warranty plus Roadside Assistance and Courtesy Transportation.

6 years/100,000 miles (whichever comes first): Body and sheet metal components are warranted against rust-through corrosion.

**EXPERIENCE BUICK PROTECTION** Every 2017 Buick model includes a maintenance program that covers the first two visits of oil and filter changes, tire rotations and 27-point inspections for up to 2 years or 24,000 miles, whichever comes first (does not include air filters). The program is fully transferable to subsequent owners. See participating dealer for other restrictions and complete details.

### **AN IMPORTANT NOTE ABOUT ALTERATIONS AND WARRANTIES**

Installations or alterations to the original equipment vehicle (or chassis) as distributed by General Motors are not covered by the General Motors New-Vehicle Limited Warranty. The special body company, assembler, equipment installer or upfitter is solely responsible for warranties on the body or equipment and any alterations (or any effect of the alterations) to any of the parts, components, systems or assemblies installed by GM. General Motors is not responsible for the safety or quality of design features, materials or workmanship of any alterations by such suppliers.

**ASSEMBLY** Buick vehicles and their components are assembled or produced by different operating units of General Motors, its subsidiaries or suppliers to GM worldwide. We sometimes find it necessary to produce Buick vehicles with different or differently sourced components than originally scheduled. Since

some options may be unavailable when your vehicle is assembled, we suggest that you verify that your vehicle includes the equipment you ordered or, if there are changes, that they are acceptable to you.

**ENGINES** Buick products are equipped with engines produced by GM Powertrain or other suppliers to GM worldwide. The engines in Buick products may also be used in other GM makes and models.

**TRAILERING AND OFF-ROAD DRIVING INFORMATION** Please go to [buick.com](http://buick.com) and carefully review the vehicle Owner's Manual for important safety information about trailering or off-road driving in your vehicle.

**A NOTE ON CHILD SAFETY** Always use safety belts and the correct child restraint for your child's age and size, even with air bags. Even in vehicles equipped with the Passenger Sensing System, children are safer when properly secured in a rear seat in the appropriate infant, child or booster seat. Never place a rear-facing infant restraint in the front seat of any vehicle equipped with an active frontal air bag. See your vehicle Owner's Manual and child safety seat instructions for more safety information.

**FLEET ORDERS** Some standard content may be deleted with fleet orders. See dealer for details.

**TAKE OWNERSHIP TO THE NEXT LEVEL** Create an Owner Center account to gain unrestricted access to everything you need to get the most out of your new vehicle. Receive alerts and service offers, schedule service, view vehicle-specific how-to videos and check service records. All online, anytime. Go to [my.buick.com](http://my.buick.com) to take a tour or register your Buick today.

GM, the GM logo, Buick, the Buick emblem, OnStar, the OnStar emblem and the slogans, emblems, vehicle model names, vehicle body designs and other marks appearing in this catalog are the trademarks and/or service marks of General Motors, its subsidiaries, affiliates or licensors. Sirius, XM and all related marks and logos are trademarks of SiriusXM Radio, Inc. The Facebook logo is a trademark of Facebook, Inc. The Twitter logo is a trademark of Twitter, Inc. The YouTube logo, Android Auto and Google Play are trademarks of Google Inc. Apple CarPlay, Siri, iPhone and iTunes are trademarks of Apple, Inc. The Instagram logo is a trademark of Instagram, Inc. ©2016 General Motors. All rights reserved.

To learn more about why Certified Service is the perfect companion for your Envision, click on [mycertifiedservice.com](http://mycertifiedservice.com).