

SONATA HYBRID

2016 HYUNDAI



2016 HYUNDAI SONATA HYBRID

THE NEW SONATA HYBRID. COMMON SENSE IS NOW MORE SENSUOUS THAN EVER.

Tell Hyundai engineers to find room for improvement, and you know what you'll get? In the all-new, totally redesigned 2016 Sonata Hybrid, you get more room – more passenger room, and more cargo room. In fact, by redesigning the hybrid battery system packaging and moving it under the trunk floor, we've given the new Sonata Hybrid more total interior volume than any hybrid in its class.¹

You also get more fuel efficiency. Powered by a new 2.0L GDI hybrid engine, the 2016 Sonata Hybrid delivers an EPA-estimated 44 MPG on the highway.² And the improvements don't stop there. Its regenerative braking system captures more electric charge than the previous model, and its steering and suspension systems are more dynamic. Its safety systems are more advanced, too, with available technologies like Blind Spot Detection, Forward Collision Warning, and more.

Now here's where common sense gets sensuous. Sonata Hybrid's sleek new exterior is a more sophisticated design – an expression of our Fluidic Sculpture accented by LED Daytime Running Lights, unique LED taillights and Eco-spoke alloy wheels. The aerodynamic benefits of a full underbody cover and active air flaps behind the front grille contribute to an industry-leading 0.24 drag coefficient that helps the car slip through the air (boosting Sonata Hybrid's fuel efficiency even further).

Inside, the cabin is more luxurious, with standard dual automatic temperature control and available features like a heated steering wheel, ventilated front seats and heated front/rear seats. We even found room for improvement in America's Best Warranty. The hybrid-related components of Sonata Hybrid are covered for 10 years or 100,000 miles with a lifetime hybrid battery warranty. No other car in its class can match that.

¹ Claim based on comparison of specifications on manufacturer websites. ² EPA estimates for comparison only. Mileage may vary. Your actual mileage will vary with options, driving conditions, driving habits and vehicle's condition.





SONATA HYBRID LIMITED Ultimate Package in Starlight Silver



SONATA HYBRID LIMITED Ultimate Package in Graphite Blue Pearl

ENGINEERED PERFORMANCE

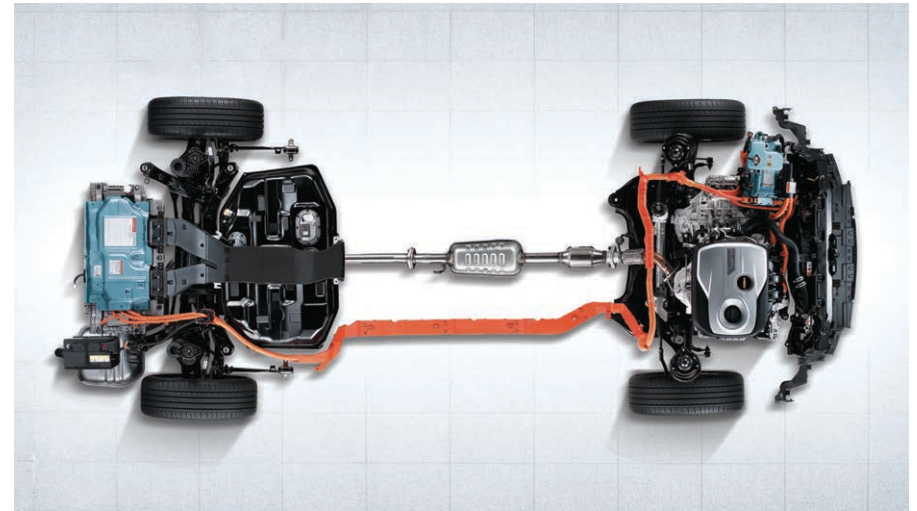
BETTER FUEL EFFICIENCY IS ONLY THE BEGINNING.

The amount of room you enjoy as you slip behind the wheel of the new Sonata Hybrid is your first indication that this is no ordinary hybrid. The feeling you get as you push the engine's start button and take it for a test-drive offers another revelation.

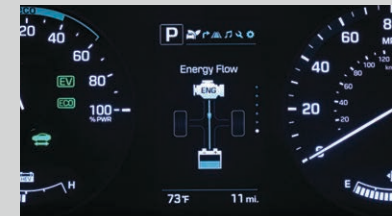
As you accelerate, you'll notice how natural it feels. That's our 6-speed SHIFTRONIC® automatic transmission at work. It's a more linear driving experience compared to the continuously variable transmissions used in some of our competitor's hybrids.

Sonata Hybrid feels like a luxury sedan in other ways, too. Our engineers enhanced the steering and suspension systems with precision tuning that offers a responsive handling feel, along with the kind of tight turning diameter you'd expect from a sports sedan. At the same time, its Dual Flow Damper shock absorbers have been tuned to deliver the smooth, refined ride of a luxury sedan.

So is the all-new 2016 Sonata Hybrid a luxury sedan or a hybrid sedan? The answer is simply, yes.



BLUE DRIVE HYBRID SYSTEM The Sonata Hybrid switches seamlessly between a gasoline-powered engine and an electric motor to deliver a steady surge of efficient power. The gasoline engine delivers the primary charge energy for the car's lithium polymer batteries, while the regenerative braking system also assists by capturing energy during braking and converting it into electricity.



HYBRID TECHNOLOGY DISPLAY To relay the status of the car's charging system at a glance, a Hybrid Technology Display appears on the trip computer's 4.2" color screen. You'll know when you're in EV mode, when the gasoline engine is engaged, and when regenerative braking is recharging the battery.



REGENERATIVE BRAKING SYSTEM To help power its operation in EV (Electric Vehicle) mode, Sonata Hybrid recharges its battery during deceleration and braking. The new Sonata Hybrid harvests even more energy while braking than last year's model, which translates into more miles in EV mode.



DRIVE MODE SELECT At the press of a button, this feature alters Sonata Hybrid's steering calibration and engine mapping to match one of three driving modes: ECO for fuel efficiency, NORMAL for balanced performance and SPORT for dynamic steering feel with more immediate engine response.



¹ Smart Cruise Control (SCC) is not a collision avoidance or warning device. SCC is for highway use only and should not be used in poor weather, heavy or varying traffic, or on winding or slippery roads. The driver remains responsible to slow or stop the vehicle to avoid a collision. ² Do not rely completely on Blind Spot Detection (BSD) and be sure to use proper lane changing procedures. BSD may not detect every object or vehicle and will not prevent accidents. See Owner's Manual for further product details and limitations. Never rely exclusively on the Rear Cross-traffic Alert. Always look over your shoulder and use your mirrors to confirm rear clearance. There are limitations to the function, detection, range and clarity of the system. VEHICLE MUST BE IN REVERSE AND HAS TO BE GOING 6 MPH OR LESS. To learn more, see Owner's Manual. The Lane Departure Warning operates above approximately 44 mph and only when the lane markings are clearly visible on the road. It will not prevent loss of control. Refer to your Owner's Manual for more information. Forward Collision Warning is intended to be a supplement to safe driving practices. The system is not designed to detect certain stationary objects such as trees or poles, and may not detect all vehicles under certain conditions. The system does not provide a braking function. The driver is responsible for being attentive and maintaining control of the vehicle, and should not wait for the system's alerts before braking as there may not be sufficient time to brake safely. ³ All SiriusXM services require a subscription, sold separately by SiriusXM after a 3-month introductory subscription. Fees and taxes apply. All fees and programming are subject to change. To cancel, please call 1-866-635-2349. See our Customer Agreement for complete terms at siriusxm.com. Sirius, XM and all related marks and logos are trademarks of Sirius XM Radio Inc. ⁴ Apple CarPlay works with iPhone 5s, iPhone 5c, iPhone 5 and later models running the latest version of iOS 7 and above. Apple is a registered trademark of Apple Inc. Android Auto works with smartphones enabled to run on Google's Android 5.0 OS and above. Google, Android and Android Auto are registered trademarks of Google Inc. ⁵ Blue Link Connected Care includes 1 year of the Blue Link Connected Care Package and requires an active Blue Link subscription. One-year term starts from the new vehicle date of first use and is available for new vehicle purchases and leases based upon terms and conditions on the Blue Link subscription enrollment pages. Only use Blue Link and corresponding devices when safe to do so. Cellular and GPS coverage is required. Blue Link is available on most new Hyundai vehicles. Features, specifications, and fees vary by subscription plan and are subject to change. For more on details and limitations, visit Hyundai.com or your authorized Hyundai dealer.

SONATA HYBRID LIMITED Ultimate Package in Blue Pearl Leather

LUXURY AND INNOVATION

WE GAVE IT MORE SPACE. SO WE COULD FILL IT WITH MORE TECHNOLOGY.

The all-new Sonata Hybrid has best-in-class passenger and cargo volume. It's space filled with available luxuries like power front seats that are both ventilated and heated, along with plenty of other innovations (like Smart Cruise Control with stop/start)¹ designed to keep you at ease.

Onboard safety technologies include an array of innovations that help drivers avoid accidents in the first place. Available features include Blind Spot Detection with Rear Cross-traffic Alert, Lane Departure Warning, Forward Collision Warning and more.²

Even with all of that, we still managed to leave room for an available 9-speaker, 400-Watt Infinity® premium audio system with a subwoofer and external amplifier. Its powerful sound makes the most of SiriusXM® Satellite Radio, HD Radio™ and Bluetooth® with audio streaming.

There's even an all-new Blue Pearl option for leather seats that features contrast stitching and trim accents. If that's not the perfect place to bask in the sunlight from the available panoramic sunroof, we don't know what is.



NAVIGATE YOUR WORLD Sonata Hybrid's available 8" multimedia navigation doesn't just map your route. It's the access point to your world. Check the monitor to see what's shown on the review camera. Use simple voice commands to access SiriusXM Satellite Radio or Travel Link® features³ like movie times, fuel prices, stocks, sports, traffic and weather. You can also tap into your compatible smartphone through Apple CarPlay or Google Android Auto.⁴



SMART TRUNK Sonata Hybrid features a hands-free smart trunk that's intelligent enough to detect your presence. Stand behind the trunk for 3 seconds with the key fob in your pocket or purse, and it automatically opens to solve your hands-full dilemma.



HIGH BEAM ASSIST Improve your road manners – and your nighttime safety – without lifting a finger. Available High Beam Assist automatically switches your headlights from high to low beams when an oncoming vehicle is detected by the forward-facing camera.



HYUNDAI BLUE LINK® Blue Link Connected Care – which includes Enhanced 24/7 Roadside Assistance, SOS Emergency Assistance, Monthly Vehicle Health Reports and more – is free for your first year of ownership. Other Blue Link packages include remote access and safeguard features. Rest assured, we've got your back.⁵

HYUNDAI Sonata Hybrid

2016 SONATA HYBRID SE

KEY STANDARD FEATURES

- 2.0L Gasoline Direct Injection DOHC 4-cylinder hybrid engine
- Hybrid Starter Generator
- 38 kW, permanent magnet high-power density motor
- 270V, lithium polymer battery system
- 6-speed SHIFTRONIC® automatic transmission
- Drive Mode Select (Normal, Eco, Sport)
- Proximity key entry with push-button start
- Electroluminescent gauge cluster with 4.2" color multi-info LCD display
- Tilt-and-telescopic steering wheel with audio, phone and cruise controls
- Instrument cluster hood stitching
- Dual zone automatic temperature control
- Premium cloth seating surfaces
- 6-way manual adjustable passenger seat
- AM/FM/SiriusXM®/CD/MP3 audio system with 6 speakers
- 5" color touchscreen audio display with rearview camera
- Blue Link® connected car system
- Bluetooth® hands-free phone integration with phonebook transfer and audio streaming
- Electronic Stability Control
- Traction Control System
- Vehicle Stability Management
- 7-airbag safety system with advanced dual front airbags
- Tire Pressure Monitoring System with individual tire pressure indicators
- Emergency tire mending kit
- Automatic projector headlights
- Heated power side mirrors with turn signal indicators
- Chrome exterior door handles with welcome light
- Driver blind spot mirror
- Rear lip spoiler and LED taillights
- Hands-free smart trunk with auto-open
- 16" Eco-spoke alloy wheels

EXTERIOR DIMENSIONS

- Overall Length 191.1 in
- Overall Width 73.4 in
- Overall Height 57.9 in

INTERIOR DIMENSIONS

- Total Interior Volume 119.4 cu ft
- Passenger Volume 106.1 cu ft
- Cargo Volume 13.3 cu ft

2016 SONATA HYBRID LIMITED

KEY STANDARD FEATURES

SE Standard Equipment plus:

- + Leather-wrapped steering wheel and shift knob
- + Leather seating surfaces
- + Leatherette door panel inserts with stitching
- + Heated steering wheel
- + Ventilated front seats
- + Heated front and rear seats
- + Integrated Memory System for power driver seat and side mirrors
- + 6-way power adjustable passenger seat
- + Power windows with front auto-down/up

ULTIMATE PACKAGE

Limited Standard Equipment plus:

- + Smart Cruise Control with stop/start
- + Lane Departure Warning
- + Forward Collision Warning
- + Electronic Parking Brake with auto-hold
- + Automatic High Beam Assist
- + Rear parking sensors
- + Panoramic tilt-and-slide sunroof

- + Auto-dimming rearview mirror with compass and HomeLink®
- + 60/40 split fold-down rear seatback
- + Manual rear side window sunshades
- + Floor console-mounted rear vents
- + Premium door sill plates
- + High Intensity Discharge Xenon headlights
- + Blind Spot Detection with Rear Cross-traffic Alert
- + 17" Eco-spoke alloy wheels

- + LED interior lights
- + 400-Watt Infinity® premium audio system with 9 speakers and rear subwoofer
- + 8" touchscreen navigation system
- + HD Radio™ technology with multicasting
- + Blue Link® connected car system
- + SiriusXM® Travel Link® (complimentary trial)

PERFORMANCE / EPA MILEAGE

- Net horsepower 193 hp
- SE (City/Highway/Comb.) 40/44/42 MPG
- LIMITED (City/Highway/Comb.) 39/43/41 MPG

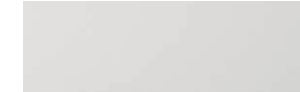
EXTERIOR / INTERIOR COLORS AND WHEELS



Pewter Gray Metallic



Starlight Silver



Diamond White Pearl



Eclipse Black



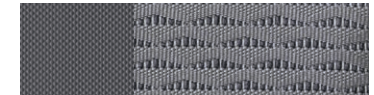
Venetian Red Pearl



Graphite Blue Pearl



Seaport Mist



Gray Cloth



Beige Cloth



Gray Leather



Beige Leather



Blue Pearl Leather



16" Alloy Wheel



17" Alloy Wheel

 **HYUNDAI**
Assurance
HYUNDAIASSURANCE.COM

Our commitment to Hyundai owners doesn't end with the transfer of keys. Wherever the road takes you, we've got your back with Hyundai Assurance, an umbrella of services and benefits that includes America's Best Warranty, 24/7 Roadside Assistance, innovative safety and car care features...and more.

POWERTRAIN LIMITED WARRANTY

10 YEARS 100,000 MILES

NEW VEHICLE LIMITED WARRANTY

5 YEARS 60,000 MILES

ANTI-PERFORATION WARRANTY

7 YEARS UNLIMITED MILES

24/7 ROADSIDE ASSISTANCE

5 YEARS UNLIMITED MILES

See dealer for LIMITED WARRANTY details. Fuel economy estimated by EPA for comparison only. Mileage may vary. While the information contained in this brochure was correct at the time of printing, specifications and equipment can change. Feature comparisons based on competitor information available at the time of printing. No warranty or guarantee is being extended in this brochure, and Hyundai reserves the right to change product specifications and equipment at any time without incurring obligations. Some vehicles are shown with optional equipment. Specifications apply to U.S. vehicles only. Please contact your Hyundai dealer for current vehicle specifications. As part of Hyundai's commitment to a responsible environment, this brochure was printed using paper certified by the Forest Stewardship Council.® FSC® certification helps ensure that the highest social and environmental standards are met in the making of the paper we use, contributing to conservation, responsible management, and community-level benefits for people near the forests.

