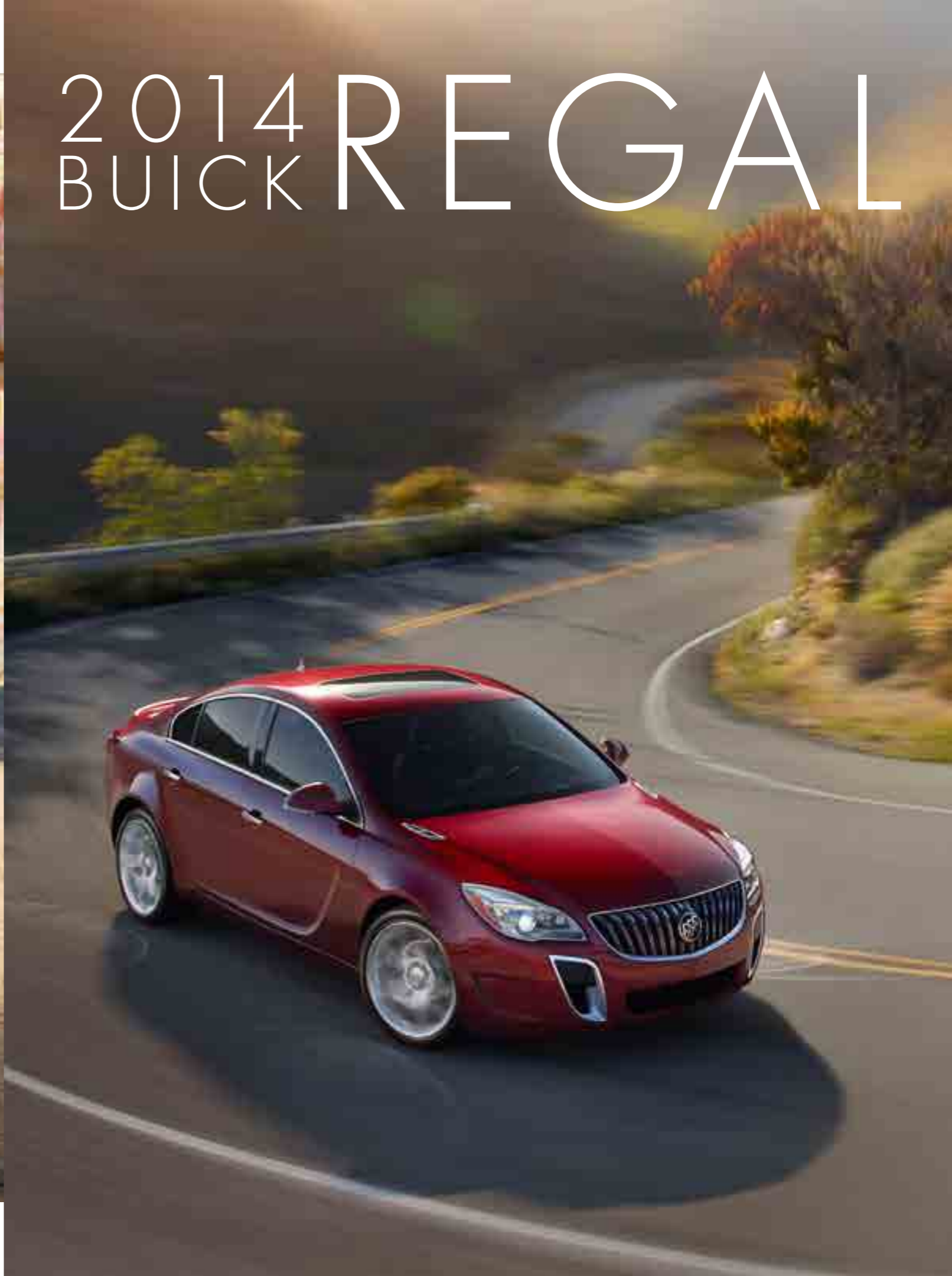




# 2014 BUICK REGAL





FOR DRIVERS WHO ENJOY  
THEIR HIGH PERFORMANCE  
WITHOUT HIGH PRETENSE.





Vehicles shown may contain optional equipment.

COPPER RED METALLIC

# REGAL. NOW AVAILABLE WITH ALL-WHEEL DRIVE, THE ANTE HAS OFFICIALLY BEEN UPPED.

In the highly competitive world of sport sedans, you've got to keep moving. When you look at Buick Regal's design, performance, technology and safety, you'll see it's done what all world-class athletes do: improve. It's an intensity reflected in the evolution of Regal's sleek shape. Within its wraparound headlamps and taillamps, there's new LED illumination, and an aerodynamic spoiler is now integrated into the rear deck lid.

And for 2014, Regal GS and Regal Turbo are now available with **ALL-WHEEL DRIVE (AWD)** to enhance driving security. Combined with an electronic limited-slip differential, AWD helps maximize traction by sending power to the wheel(s) with the most grip. In low-traction situations—like rain, sleet or snow—it can send up to 50 percent of engine torque to either front wheel and up to 85 percent to either rear wheel. And on dry roads, the performance and handling benefits include enhanced acceleration, providing torque to all four wheels. On Regal GS, put its class-exclusive Interactive Drive Control System in GS mode, and Regal GS adapts its available AWD to send more of its torque to the rear wheels, enhancing the performance driving characteristics expected from a GS.



COPPER RED METALLIC



QUICKSILVER METALLIC



## REGAL TURBO. TURBOCHARGE YOUR COMMUTE.

For 2014, Regal gets a new 2.0L Turbo DOHC DI 4-cylinder engine. Its 259-hp performance is impressive, but what you'll really feel is the responsive torque. It delivers 90 percent of its 295 lb-ft peak torque from 3000 rpm to 4000 rpm for power on demand. It's the kind of low-rpm punch that makes pulling away from stoplights a guilty pleasure. Need to accelerate up a freeway on-ramp and merge into the traffic flow? The new engine's twin-scroll design makes it effortless as it seamlessly pours on the torque as you reach highway cruising speeds. It all happens with swift assurance, leaving the driver and passengers to relax and enjoy the view.

# REGAL WITH eASSIST. 36 MPG HWY.<sup>1</sup>

Regal is available with a fuel-saving technology called eAssist. This powertrain integrates a compact electric motor, an advanced lithium-ion battery and Regal's available 2.4L DOHC DI 4-cylinder gasoline engine. To help conserve fuel when Regal is stopped, like at a red light, eAssist switches the engine off and then back on again the instant the driver's foot leaves the brake pedal. eAssist also captures and stores energy in the battery as you coast or brake. This energy is used to run accessories when Regal is stopped with the engine switched off. When needed, the stored energy also powers the electric motor, increasing the horsepower and torque of the 2.4L engine for enviable fuel economy of 36 mpg hwy.<sup>1</sup>



GRAPHITE BLUE METALLIC

<sup>1</sup>Based on EPA estimates.



## LIFE IS NOT A SPECTATOR **SPORT.**

You can tell by glancing at the Regal GS interior that this is a driver's car. Now focus your eyes on the row of buttons centered atop the dash, specifically the two marked GS and Sport. They're part of the Interactive Drive Control System, standard on Regal GS. Three driver-selectable modes—Normal, Sport or GS—adapt the ride and handling of Regal GS to your driving style in real time. In GS mode, the system tightens handling response even further. At high speeds, steering, suspension and transmission are recalibrated to optimize stability during sweeping curves.

PICK A COLOR  
YOU THINK GOES  
WELL WITH BLACK  
ASPHALT.

With 10 stunning exterior finish colors to choose from, it should be easy to find one that suits your sense of style. And for 2014, Regal offers five wheel designs and a range of sizes, spokes and finishes. No matter which you roll with, you and your new Regal are sure to turn heads every time you turn the corner.





COPPER RED METALLIC



17" SILVER  
PAINTED ALLOY



18" SILVER  
PAINTED ALLOY



18" CHROMED  
ALLOY

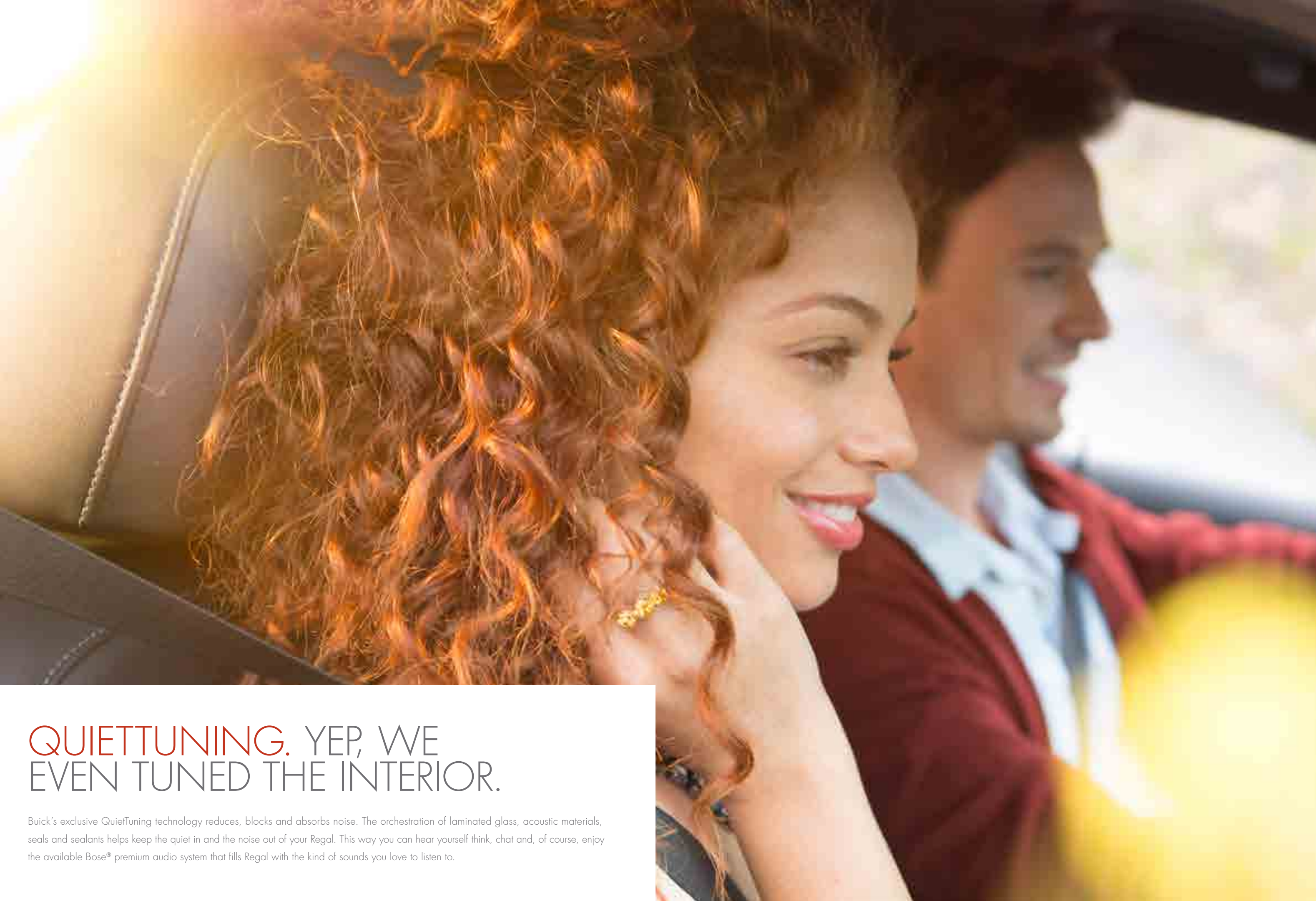


19" V-SPOKE  
PAINTED ALLOY



20" V-SPOKE  
POLISHED ALLOY

<sup>1</sup>Not available on GS. <sup>2</sup>Additional charge, premium paint. <sup>3</sup>Late availability.



## QUIETTUNING. YEP, WE EVEN TUNED THE INTERIOR.

Buick's exclusive QuietTuning technology reduces, blocks and absorbs noise. The orchestration of laminated glass, acoustic materials, seals and sealants helps keep the quiet in and the noise out of your Regal. This way you can hear yourself think, chat and, of course, enjoy the available Bose® premium audio system that fills Regal with the kind of sounds you love to listen to.

# BUICK INTELLILINK. A SMARTER WAY TO CONNECT.

Remarkably simple and intuitive, Buick IntelliLink<sup>1</sup> helps drivers keep their eyes on the road and their hands on the wheel. Your own natural voice is all you need to control the IntelliLink infotainment system. This next generation of Buick IntelliLink is simple and intuitive to use. It offers a new level of connectivity and control centered on an 8-inch diagonal color touch-screen display. Just pair your smartphone—it's easily done using the USB port<sup>2</sup> or Bluetooth.<sup>3</sup> With IntelliLink, natural-language voice recognition allows for conversational commands, such as "Call my office." Or to navigate content, you simply use touch, drag and swipe gestures. The system lets you save up to 60 presets of your favorite music, plus destinations and contacts. You can listen to selections from your MP3 music library or stream Pandora<sup>®</sup> internet radio from your smartphone. Plus the built-in Bluetooth lets you play music wirelessly. And now with app tray customization, you can keep your frequently used features at your fingertips. And since Regal is now available with Bose Premium Audio, the music you choose will sound especially rich, reproduced with deep bass, complex midrange and clean, crisp highs.

<sup>1</sup>Full functionality requires compatible Bluetooth and smartphone. Some devices require USB connectivity. Data plan rates apply.  
<sup>2</sup>Not compatible with all devices. <sup>3</sup>Go to [gmtotalconnect.com](http://gmtotalconnect.com) to find out which phones are compatible with the vehicle.





# ACTIVE SAFETY SUITE. SWEET.

Regal now offers a full suite of state-of-the-science safety technologies. Available safety innovations include those designed to alert the driver to potential hazards and, if necessary, to actively help assist the driver avoid certain front-end collisions. Whether you're in a crowded parking area, backing out of a driveway, changing lanes or simply staying the course, Regal helps heighten your awareness of potential hazards around you. Available **FORWARD COLLISION ALERT**<sup>1</sup> alerts the driver of a potential collision with a vehicle ahead. If necessary, new available **AUTOMATIC COLLISION PREPARATION**<sup>2</sup> can even automatically apply the brakes if it detects you may not be reacting quickly enough to this threat. The available **ADAPTIVE CRUISE CONTROL** is a new feature that automatically adjusts the vehicle speed to maintain a driver-selected following gap to vehicles ahead, even in stop-and-go traffic.

Available **REAR CROSS TRAFFIC ALERT**<sup>3</sup> helps you know something is headed your way when backing up. A camera in the rear captures a view behind the car, while radar sensors detect vehicles approaching from the left or right within 65 feet. The system alerts you with an audible "beep" and by flashing a warning signal on the Rearview Camera screen. **LANE CHANGE ALERT**<sup>4</sup> is an available feature included with **SIDE BLIND ZONE ALERT**<sup>1</sup>. Together, they warn you of vehicles in the next lane approaching fast from behind and of vehicles in your side blind zones. And to help you avoid unintentional slow lane drifts, available **LANE DEPARTURE WARNING** reads the lane markings at speeds above 35 mph. If you haven't put on your turn signal and the system senses your car departs its lane, it flashes a yellow icon to alert you.



Standard for 6 months are the safety and security of OnStar<sup>2</sup> that now includes the **ONSTAR REMOTELINK MOBILE APP**<sup>3</sup>, which lets you lock, unlock and even start your Regal remotely.<sup>4</sup> With OnStar standard for 6 months, you won't be alone. In many crashes, Automatic Crash Response can alert an OnStar Advisor, who is connected into your Regal and can send help to your exact location—even if you can't ask for it. And new this year, OnStar Remotelink<sup>®</sup> Key Fob Services<sup>5</sup> are included for 5 years on OnStar-equipped 2014 vehicles when you download the app and use Remotelink services during the 6-month trial period and any consecutive periods with an OnStar plan. Services include remote door unlock and lock, remote start and stop<sup>4</sup> and remote horn and lights.

<sup>1</sup>Before making a lane change, always check the Side Blind Zone Alert display, check the side and inside rearview mirrors, look over your shoulder for vehicles and hazards and start the turn signal. <sup>2</sup>Visit [onstar.com](http://onstar.com) for coverage map, details and system limitations. Services vary with conditions. OnStar acts as a link to existing emergency service providers. Not all vehicles may transmit all crash data. <sup>3</sup>Available on select Apple, Android and BlackBerry devices. Services vary by device, vehicle and conditions. Requires an active OnStar subscription. <sup>4</sup>Requires factory-installed remote start. <sup>5</sup>Access is available for 5 years from the date of vehicle delivery and is transferable. Does not include any emergency services or other OnStar services. To cancel OnStar Remotelink Key Fob Services, or if your vehicle is sold, it is important to contact an OnStar Advisor. See [onstar.com/mobile](http://onstar.com/mobile) for full details.

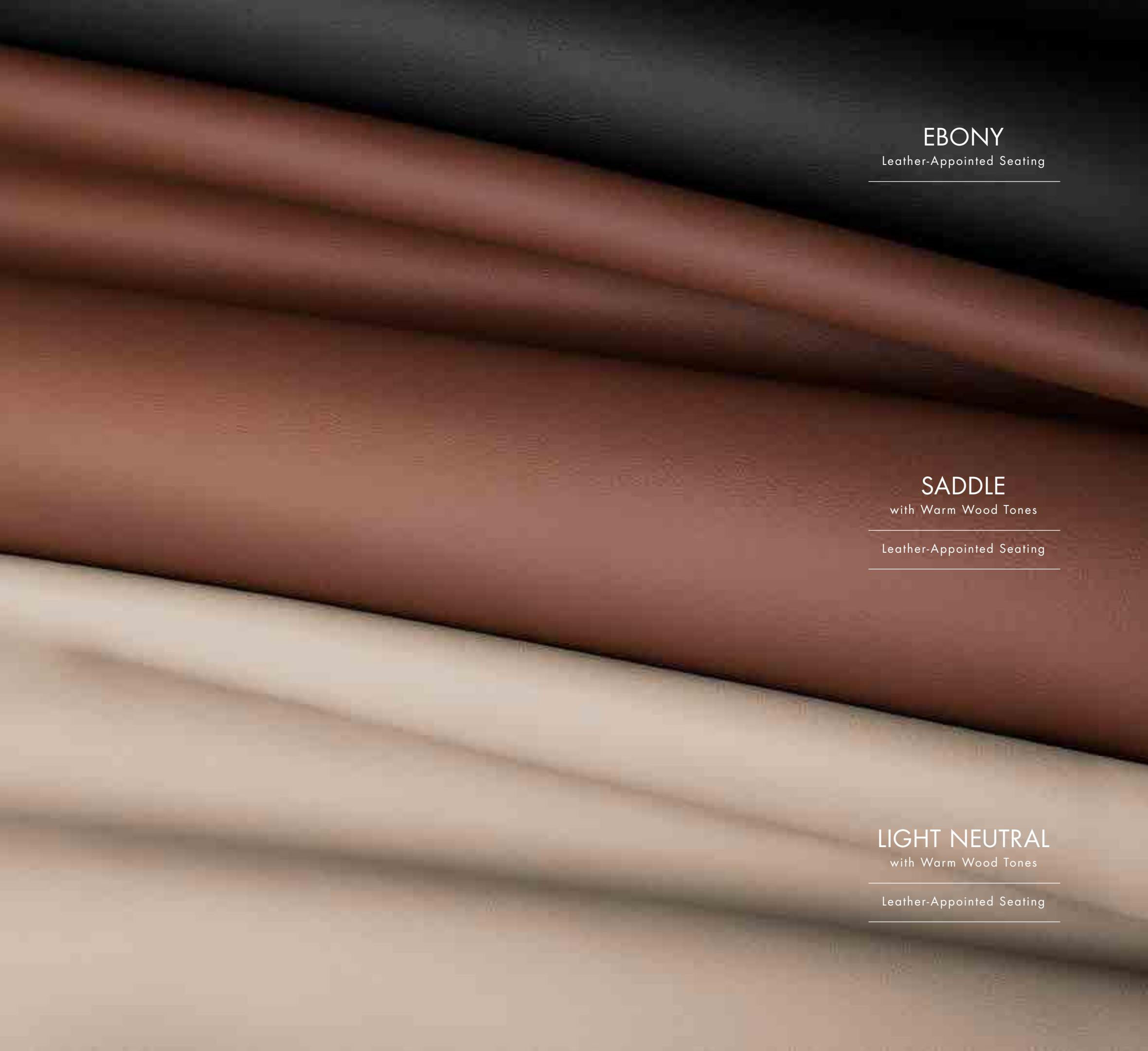


REGAL GS INTERIOR SHOWN

TO IMPROVE YOUR DRIVING,  
TRY SITTING HERE.

Open any door of a Buick Regal, slide into the seat and you've entered an environment crafted to make you feel relaxed and at ease. If the door you open happens to be the driver's door, those feelings are the foundation for an exhilarating driving experience. In front of you is a thick-rimmed, leather-wrapped three-spoke steering wheel that places command of the audio and cruise control systems at your fingertips. To your right in the center console is a layout of controls and displays that's simple and intuitive to use. A 4.2-inch diagonal Driver Information Display is your source for updates on things like fuel mileage, tire pressure<sup>1</sup> and oil life. On the GS, it's an 8-inch diagonal color Driver Information and Cluster Display with a customizable menu of data you can keep tabs on at a glance.

<sup>1</sup>Does not include spare tire.



**EBONY**  
Leather-Appointed Seating

---

**SADDLE**  
with Warm Wood Tones  
Leather-Appointed Seating

---

**LIGHT NEUTRAL**  
with Warm Wood Tones  
Leather-Appointed Seating

---



Late availability. Preproduction interior shown.



# CRAFTED TO PERFORM.

Slip into the driver's seat of Buick Regal and let your eyes wander a bit over the surfaces and shapes, the textures and the tones. You'll quickly sense that what you're about to drive hasn't just been engineered—it's been crafted. The result is a driving experience in which everything stimulates the senses, and every nuance of Regal's interior design makes you feel comfortably in command. Take a thorough test-drive in a Regal, and get to know Buick.







# HERE'S WHAT GOES INTO REGAL. HOW YOU PUT IT TOGETHER IS UP TO YOU.

Now it's your turn to make Regal your very own by personalizing it with one of the equipment groups and its available options.

## STANDARD EQUIPMENT

### POWER AND PERFORMANCE

**Drivetrain** Front-wheel drive  
**Engine** 2.0L Turbo DOHC SIDI with VVT  
**Transmission** 6-speed automatic, electronically controlled with overdrive and Driver Shift Control  
**Suspension** Front MacPherson strut, rear 4-link (AWD only)  
**Steering** Power, electric  
**Brakes** 4-wheel anti-lock, 4-wheel disc with brake assist  
**Traction Control** Full function  
**StabiliTrak** Stability control system  
**Exhaust** Dual outlet stainless steel with bright tips

### COMFORT AND CONVENIENCE

**Seat Trim** Leather-appointed  
**Seating** Heated front bucket seats, rear split folding  
**Driver Seat Adjuster** 12-way (8-way power and 4-way power lumbar)  
**Front-Passenger Seat Adjuster** 4-way manual and 2-way power vertical  
**Armrests** Center and rear with 2 integral cupholders  
**Head Restraints** Front, 2-way adjustable  
**Head Restraints** Rear, outboard seats 2-way adjustable  
**Lighting** Custom, interior front and rear reading, front and rear door and console ambient lighting, front foot well, puddle lights and instrument panel light pipe  
**Assist Handles** Front passenger and rear outboard  
**Driver Information Display** Driver instrument information enhanced, 4.2" diagonal multicolor  
**Compass Display** Located in the Driver Information Display

## SPECIFICATIONS

### DIMENSIONS (INCHES)

Wheelbase	107.8
Overall length	190.2
Body width	73.1
Overall height	58.4/58.0 (GS)
Track width, front	62.4
Track width, rear	62.5
Head room, front	38.8

Head room, rear	36.8
Shoulder room, front	56.7
Shoulder room, rear	54.4
Hip room, front	55.4
Hip room, rear	52.3
Leg room, front	42.1
Leg room, rear	37.3

### SPECIFICATIONS AND CAPACITIES

Engine Type	2.0L DOHC SIDI w/VVT Turbo
Horsepower	259 @ 5300
Torque	295 lb-ft @ 3000 - 4000 rpm Turbo 295 lb-ft @ 2500 - 4000 rpm GS
GM-estimated mpg	21 city/30 hwy FWD 19 city/27 hwy AWD 20 city/31 hwy GS FWD with manual transmission
Cargo Capacity (cu. ft.) <sup>12</sup>	14.2

Engine Type	2.4L DOHC DI w/eAssist technology
Horsepower	182 @ 6700 rpm
Torque	172 lb-ft @ 4900 rpm
EPA-estimated mpg	25 city/36 hwy
Cargo Capacity (cu. ft.) <sup>12</sup>	11.1

## EQUIPMENT GROUPS

### PREMIUM I GROUP

INCLUDES ALL STANDARD EQUIPMENT PLUS:

**Passive Entry System**  
**Remote Vehicle Start System** (Requires auto transmission)  
**Push-Button Start**  
**12-Way Power Seating** Front passenger  
**Universal Garage-Door Opener**  
**Chrome Accents** On door handles  
**Rear Parking Assist**  
**Power Outlet** 120-volt AC  
**Heated Steering Wheel**

### PREMIUM II GROUP

INCLUDES ALL STANDARD EQUIPMENT PLUS:

**Passive Entry System**  
**Remote Vehicle Start System** (Requires auto transmission)  
**Push-Button Start**  
**12-Way Power Seating** Front passenger  
**Universal Garage-Door Opener**  
**Chrome Accents** On door handles  
**Rear Parking Assist**  
**Power Outlet** 120-volt AC  
**Heated Steering Wheel**

**Thorax Air Bags**<sup>5</sup> Rear seat  
**Bose® Premium Audio System**  
**HID Headlamps** Bi-xenon  
**Audio System with Navigation**<sup>7</sup>

### GS GROUP

INCLUDES ALL STANDARD EQUIPMENT PLUS:

**Passive Entry System**  
**Remote Vehicle Start System** (Requires auto transmission)  
**Push-Button Start**  
**12-Way Power Seating** Front passenger  
**Universal Garage-Door Opener**  
**Chrome Accents** On door handles  
**Power Outlet** 120-volt AC

**Thorax Air Bags**<sup>5</sup> Rear seat  
**Bose Premium Audio System**  
**HID Headlamps** Bi-xenon

**Engine** 2.0L Turbo with 259 horsepower  
**Interactive Drive Control System** (GS-specific)  
**Wheels** REH 19" V-spoke painted alloy

**Transmission** 6-speed automatic  
**GS-Specific Fascias and Rockers**  
**GS-Specific Dual Exhaust**  
**GS-Specific Badging**  
**GS-Specific Sport Seats, Heated Steering Wheel, Sport Pedals**  
**Brembo Front Brakes** 4-wheel anti-lock disc  
**HiPer Strut Front Suspension**  
**Moldings** Satin finish surround  
**Rear Lip Spoiler**  
**Front and Rear Parking Assist**  
**Audio System With Navigation**<sup>7</sup>  
**Driver Information and Cluster Display** Enhanced 8" diagonal multi-configurable

### ENTERTAINMENT SYSTEMS

**Audio System** Buick IntelliLink<sup>1</sup> radio, AM/FM stereo and CD player, includes USB ports<sup>2</sup> and Bluetooth<sup>3</sup> streaming for audio and select phones  
**SiriusXM Satellite Radio**<sup>4</sup> Includes 3 trial months of service. For more information, visit siriusxm.com.  
**Buick IntelliLink**<sup>1</sup> Smartphone control via voice activation and steering-wheel-mounted controls. It also enables streaming stereo audio from the phone through services like Pandora<sup>®</sup> internet radio.  
**Audio** 7-speaker system  
**USB Ports**<sup>2</sup> Connectivity for various digital media and select smartphones (2 ports)  
**Bluetooth**<sup>3</sup> Personal cell-phone connectivity to vehicle audio system

### SAFETY AND SECURITY

**Safety Belts** 3-point, all seating positions  
**LATCH** (Lower Anchors and Top tethers for Children) system for child safety seats in all rear seating positions  
**Air Bags**<sup>5</sup> Dual-stage frontal and side-impact, driver and front passenger and head curtain side-impact, front and rear outboard seating positions  
**Power Door Locks** Programmable with lockout protection  
**OnStar**<sup>6</sup> 6 months of Directions & Connections Plan  
**Theft-Deterrent System** Content theft alarm  
**Tire Pressure Monitor System** Does not monitor spare tire  
**Child Security Locks** Rear  
**Rearview Camera System**

### STYLING AND FUNCTIONALITY

**Antenna** Integral rear roof-mounted, body-color  
**Lights** Halogen headlamps automatic on and off, with flash-to-pass feature  
**Fog Lamps** Front halogen (Not available on GS)  
**Daytime Running Lamps** Switchable  
**Glass** Solar-Ray light-tinted  
**Door Handles** Body-color  
**Outside Mirrors** Heated, power-adjustable, manual folding with integrated turn signal indicators  
**Grille** Black chrome, waterfall style  
**Moldings** Bright, window surround  
**Lamps** Center High-Mounted Stop Lamp (CHMSL)  
**Sill Plates** Bright, front  
**Wipers** Front intermittent with washers  
**Wheels** PXR 18" silver painted alloy

### AVAILABLE OPTIONS

**Sunroof** Power, tilt-sliding with sunshade  
**All-Wheel Drive** With HiPer strut front suspension  
**Steering** Power, variable assist, electric (AWD only)  
**Wheels** Q6Y 18" chromed alloy  
**Audio System** Buick IntelliLink<sup>1</sup> radio with Navigation,<sup>7</sup> AM/FM stereo and CD player, includes USB port<sup>2</sup> and Bluetooth<sup>3</sup> streaming for audio and select phones

## WHEELS



RSB 17" SILVER PAINTED ALLOY



REH 19" V-SPOKE PAINTED ALLOY



PXR 18" SILVER PAINTED ALLOY



RTJ 20" V-SPOKE POLISHED ALLOY



Q6Y 18" CHROMED ALLOY

## COLORS

SUMMIT WHITE <sup>9</sup>
WHITE DIAMOND TRICOAT <sup>10</sup>
CHAMPAGNE SILVER METALLIC <sup>9</sup>
QUICKSILVER METALLIC
COPPER RED METALLIC <sup>11</sup>
CRYSTAL RED TINTCOAT <sup>10</sup>
SMOKY GRAY METALLIC
GRAPHITE BLUE METALLIC <sup>9</sup>
BLACK DIAMOND TRICOAT <sup>10</sup>
BLACK ONYX <sup>9</sup>

### AVAILABLE OPTIONS FOR PREMIUM I GROUP:

**All-Wheel Drive** With HiPer strut front suspension (2.0L Turbo engine only)  
**Sunroof** Power, tilt-sliding with sunshade  
**Engine** 2.4L with VVT, DI and eAssist technology (FWD only)  
**eAssist Technology** Integrates an electric motor and advanced lithium-ion battery with the 2.4L engine. As you brake, eAssist captures energy, a process known as regenerative braking. All this provides Regal with 36 hwy mpg.<sup>8</sup>  
**Audio System with Navigation**<sup>7</sup>  
**Wheels** Q6Y 18" chromed alloy (Not available with eAssist)  
**Wheels** RSB 17" silver painted alloy (eAssist only)  
**Steering** Power, variable assist, electric (AWD only)

### AVAILABLE OPTIONS FOR PREMIUM II GROUP:

**All-Wheel Drive** With HiPer strut front suspension  
**Sunroof**  
**Wheels** Q6Y 18" chromed alloy  
**Transmission** 6-speed manual (Requires Turbo engine)  
**Steering** Power, variable assist, electric (AWD only)  
**Driver Confidence Package 1** Includes Side Blind Zone Alert with Lane Change Alert, Rear Cross Traffic Alert, Lane Departure Warning and Forward Collision Alert (Requires power tilt-sliding sunroof)  
**Driver Confidence Package 2** Includes Automatic Collision Preparation and Adaptive Cruise Control

### AVAILABLE OPTIONS FOR GS GROUP:

**All-Wheel Drive** With HiPer strut front suspension (Automatic transmission only)  
**Sunroof**  
**Wheels** RTJ 20" V-spoke polished alloy  
**With performance tires** (Summer only)  
**Transmission** 6-speed manual (Not available on AWD)  
**Driver Confidence Package 1** Includes Side Blind Zone Alert with Lane Change Alert, Rear Cross Traffic Alert, Lane Departure Warning and Forward Collision Alert (Requires power tilt-sliding sunroof)  
**Driver Confidence Package 2** Includes Automatic Collision Preparation and Adaptive Cruise Control

<sup>1</sup>Full functionality requires compatible Bluetooth and smartphone. Some devices require USB connectivity. Data plan rates apply. <sup>2</sup>Not compatible with all devices. <sup>3</sup>Go to gmtotalconnect.com to find out which phones are compatible with the vehicle. <sup>4</sup>If you subscribe after your trial period, *subscriptions are continuous until you call SiriusXM to cancel.* See SiriusXM Customer Agreement for complete terms at siriusxm.com. Other fees and taxes will apply. All fees and programming subject to change. For more information about NavTraffic, visit siriusxm.com/navtraffic. For more information about Travel Link, visit siriusxm.com/travelink. XM satellite service is available only to those in the 48 contiguous USA and DC. Sirius, XM and all related marks and logos are trademarks of SiriusXM Radio, Inc. <sup>5</sup>A NOTE ON CHILD SAFETY: Always use safety belts and the correct child restraint for your child's age and size, even with air bags. Even in vehicles equipped with the Passenger Sensing System, children are safer when properly secured in a rear seat in the appropriate infant, child or booster seat. Never place a rear-facing infant restraint in the front seat of any vehicle equipped with an active frontal air bag. See your vehicle Owner's Manual and child safety seat instructions for more safety information. <sup>6</sup>OnStar services require vehicle electrical system (including battery), wireless service and GPS satellite signals to be available and operating for features to function properly. OnStar acts as a link to existing emergency service providers. Not all vehicles may transmit all crash data. Subscription Service Agreement required. Call 1-888-4ONSTAR (466-7827) or visit onstar.com for OnStar's Terms and Conditions, Privacy Policy, details and system limitations. <sup>7</sup>Map coverage available in the United States, U.S. Virgin Islands, Puerto Rico and Canada. <sup>8</sup>Based on EPA estimates. <sup>9</sup>Not available on GS. <sup>10</sup>Additional charge, premium paint. <sup>11</sup>Late availability. <sup>12</sup>Cargo and load capacity limited by weight and distribution.



## IMPORTANT WORDS ABOUT THIS CATALOG

Since some information may have been updated since the time of printing (July 2013), please check with your Buick dealer for complete details. Buick reserves the right to lengthen or shorten the model year for any product for any reason, or to start and end model years at different times.

**NEW-VEHICLE LIMITED WARRANTY.** This warranty is for GM vehicles registered in the U.S.A. See your Buick dealer for terms and conditions.

4 years/50,000 miles (whichever comes first): Bumperto-Bumper Limited Warranty. The entire vehicle is warranted for repairs, including parts and labor, to correct defects in materials or workmanship. The warranty covers towing to the nearest Buick dealership, and there is no deductible for warranty repairs during the warranty period. The warranty transfers automatically with vehicle ownership during the warranty period.

6 years/70,000 miles (whichever comes first): Transferable Powertrain Limited Warranty plus Roadside Assistance and Courtesy Transportation.

6 years/100,000 miles (whichever comes first): Body and sheet metal components are warranted against rust-through corrosion.

**EXPERIENCE BUICK PROTECTION.** Every 2014 Buick model includes a maintenance program that covers scheduled oil and filter changes, tire rotations and 27-point inspections according to your new vehicle's recommended maintenance schedule for up to 2 years or 24,000 miles, whichever comes first (does not include air filters). The program covers a maximum of 4 service visits and is fully transferable to subsequent owners. See participating dealer for other restrictions and complete details.

**AN IMPORTANT NOTE ABOUT ALTERATIONS AND WARRANTIES.** Installations or alterations to the original equipment vehicle (or chassis) as distributed by General Motors are not covered by the General Motors New-Vehicle Limited Warranty. The special body company, assembler, equipment installer or upfitter is solely responsible for warranties on the body or equipment and any alterations (or any effect of the alterations) to any of the parts, components, systems or assemblies installed by GM. General Motors is not responsible for the safety or quality of design features, materials or workmanship of any alterations by such suppliers.

**ASSEMBLY.** Buick vehicles and their components are assembled or produced by different operating units of General Motors, its subsidiaries or suppliers to GM worldwide. We sometimes find it necessary to produce

Buick vehicles with different or differently sourced components than originally scheduled. Since some options may be unavailable when your vehicle is assembled, we suggest that you verify that your vehicle includes the equipment you ordered or, if there are changes, that they are acceptable to you.

**ENGINES.** Buick products are equipped with engines produced by GM Powertrain or other suppliers to GM worldwide. The engines in Buick products may also be used in other GM makes and models.

**TRAILERING AND OFF-ROAD DRIVING INFORMATION.** Please go to [buick.com](http://buick.com) and carefully review the vehicle Owner's Manual for important safety information about trailering or off-road driving in your vehicle.

**A NOTE ON CHILD SAFETY:** Always use safety belts and the correct child restraint for your child's age and size, even with air bags. Even in vehicles equipped with the Passenger Sensing System, children are safer when properly secured in a rear seat in the appropriate infant, child or booster seat. Never place a rear-facing infant restraint in the front seat of any vehicle equipped with an active frontal air bag. See your vehicle Owner's Manual and child safety seat instructions for more safety information.

**FLEET ORDERS.** Some standard content may be deleted with fleet orders. See dealer for details.

**TAKE OWNERSHIP TO THE NEXT LEVEL.** Create an Owner Center account to gain unrestricted access to everything you need to get the most out of your new vehicle. Receive alerts and service offers, schedule service, view vehicle-specific how-to videos and check service records. All online, anytime. Go to [my.buick.com](http://my.buick.com) to take a tour or register your Buick today.

GM, the GM logo, Buick, the Buick emblem, OnStar, the OnStar emblem and the slogans, emblems, vehicle model names, vehicle body designs and other marks appearing in this catalog are the trademarks and/or service marks of General Motors, its subsidiaries, affiliates or licensors. Sirius, XM and all related marks and logos are trademarks of SiriusXM Radio, Inc. Facebook is a registered trademark of Facebook, Inc. Twitter is a registered trademark of Twitter, Inc. YouTube is a registered trademark of Google, Inc. Google+ is a trademark of Google, Inc. Pinterest is a registered trademark of Pinterest, Inc. iPhone is a registered trademark of Apple, Inc. ©2013 General Motors. All rights reserved. Litho in U.S.A., July 2013.

To learn more about why Certified Service is the perfect companion for your Regal, click on [mycertifiedservice.com](http://mycertifiedservice.com).