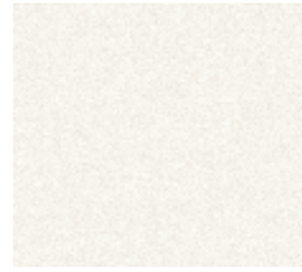


**Frost White (50)**  
Interior: Cashmere  
Gray



**Platinum Metallic (67)**  
Interior: Cashmere  
Gray



**Titanium Metallic (16)**  
Interior: Cashmere  
Gray



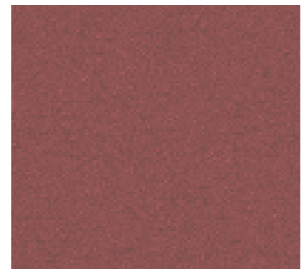
Cashmere Leather Trim



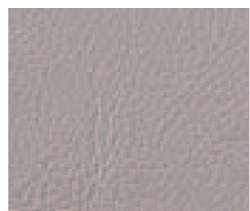
**Cashmere Metallic (15)**  
Interior: Cashmere



**Deep Sapphire Metallic (22)**  
Interior: Cashmere  
Gray



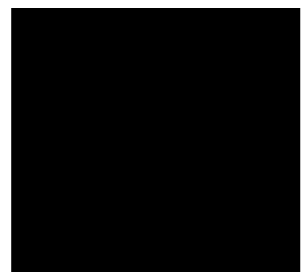
**Crimson Pearl Metallic (86)<sup>(1)</sup>**  
Interior: Cashmere  
Gray



Gray Leather Trim



**Medium Red Metallic (44)**  
Interior: Cashmere  
Gray



**Black Onyx (41)**  
Interior: Cashmere  
Gray



BUICK.COM / 800.4.A.BUICK



<sup>(1)</sup>Available at extra cost.



O N E B E T T E R

They're two simple words that ground a whole

philosophy. And drive an entire car company.

They mean resolutely refusing, at every turn,

to ever be satisfied with the status quo. They

declare that, in every category in which we

compete, Buick is determined to take on the

benchmark and to go it one better. To make

the leather softer. The engine more powerful.

The cabin quieter. The tolerances tighter.

One better. Those two simple words are much

more than a mere motto. They're a deeply

held belief in a better way to build. Now see

the power of those words come to life in

the 2005 Rainier.

BUICK

Six or eight cylinder power... smooth controlled ride... Buick's QuietTuning™



† PLATE 2 † Rainier CXL in Platinum Metallic.  
Shown with available equipment.

There are myriad SUVs on the market these days — many trumpeting their stump-pulling power, or their off-road capability, or their colossal size. Buick has quietly chosen another path. So, while Rainier is a full-frame utility vehicle with impressive power, strength and room, it is also a highly evolved vehicle with a level of craftsmanship and refinement

uncommon in its class. Buick's amazing QuietTuning creates an extraordinarily peaceful interior for Rainier. Its leather-appointed seats cradle passengers in comfort. Its rear air suspension smoothes the ride. Yet there is commanding power for all the things you expect of an SUV. Peaceful. Powerful. Rainier. It will leave you very quietly impressed.



**RAINIER:** bringing inner peace to the SUV





PLATE 53 Rainier CXL leather-appointed interior in Cashmere.



#### QUIETTUNING – PIONEERED BY BUICK. FIRST DEVELOPED FOR RAINIER

From its inception, Rainier was designed to achieve impressive levels of interior quietness. But our engineers wanted more. So they developed QuietTuning. It's a Buick-pioneered process that employs the following three strategies to transform Rainier's cabin into a sanctuary from the outside world.

#### A. REDUCE NOISE AT ITS SOURCE

Obviously, noise that isn't generated is noise that can't enter a vehicle and disturb its passengers. That is where our engineers began their quest for quiet. They analyzed *powertrain noise* coming from Rainier's engines and exhaust systems, and found ways to make significant reductions. They next studied *wind noise* caused by the aerodynamic details of Rainier, and tweaked some of those details to further reduce noise. Finally, they examined *road noise* generated by the simple act of tires rolling over pavement, and specified special *quiet-tread* tires for Rainier. These tires have a unique tread pattern designed not only to provide good grip, but also to produce very little tread noise.

#### B. BLOCK THE NOISE PATH

Much of the noise that can't be eliminated at its source can be denied entry into the passenger compartment of a vehicle. To that end, our engineers studied the noise entering the interior through the windows of Rainier and found a way to make a real difference. *An acoustic laminate windshield is specified for every Rainier.* Essentially two layers of glass with a thin film of plastic laminated in between, it is this layered construction, as well as glass layers of different thicknesses, that helps block sound from entering the passenger compartment. *Laminated front side-door glass* is installed for the same reason, particularly because this glass is in such close proximity to the ears of the driver and front-seat passenger. Our engineers also carefully analyzed the body and doors of Rainier to identify other potential noise paths. They then sought out special materials to apply to those paths. As a result, the body and doors of Rainier are treated with over *26 strategically positioned acoustic seals* to help block outside noise from ever reaching the cabin.

#### C. ABSORB NOISE IN THE CABIN

Despite all the efforts to deny its entry into the passenger compartment of Rainier, some noise manages to sneak in. Our engineers have an acoustic welcoming party waiting. *Special acoustic absorbers* are strategically positioned under carpeting and behind interior trim to help absorb noise before it ever reaches the ears of Rainier's driver and passengers. The final result of Buick's QuietTuning is a peaceful calm that pervades the cabin of Rainier. You'll be amazed by what you don't hear.

Qui  
Tun  
g

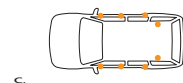
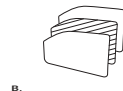




PLATE 73 Solitude in motion. Rainier CXL in Black Onyx. Shown with available equipment.

#### A. 5.3L V8 ENGINE

A masterwork of modern engineering, Rainier's available V8 engine is filled with innovations. Its large displacement cast aluminum block and cylinder heads save weight while they also help provide the strength to generate class-leading\* power: 300 hp and 335 lb-ft torque.\*\* That kind of power and torque gives you the freedom to haul or tow heavy loads and still have enough power in reserve to pass and maneuver with confidence.

**Electronic throttle control:** Often seen on premium automobiles but new to SUVs, electronic throttle control is the stuff of the future. There is no cable link between the accelerator and the engine. A sensor at the gas pedal measures pedal angle and sends a signal to the engine control computer to deliver fuel at the correct rate. The result is quick, precise throttle response and improved reliability.

\*Full Medium Utility segment.  
\*\*Preliminary figures.



A.

#### B. UNIQUE PAN-AXLE OIL PAN

All-wheel drive vehicles require an extra differential to transmit power to the front wheels. This can force designers to mount the engine higher than they would prefer, resulting in compromised sightlines and a higher center of gravity. Rainier all-wheel drive models have a pan-axle oil pan. The front axle runs right through this unique oil pan, allowing our engineers and designers to keep the engine mounted low in the chassis. That allows better sightlines from the driver seat. It also lowers Rainier's center of gravity and aids in increased stability on the road.



B.

#### C. 4.2L I6 ENGINE

Rainier's standard power comes from a state-of-the-art engine that incorporates advanced design and technology virtually everywhere you look. 24 valves, dual overhead cams. The more intake and exhaust valves an engine has, the easier it can breathe. That is to say, the easier it can draw the fuel/air mixture into the combustion chambers, and the easier it can expel the spent gases of combustion. With dual overhead cams controlling four valves per cylinder and variable exhaust valve timing, this engine breathes very well indeed. All of which results in better efficiency, better fuel economy\* and more power: 275 hp/275 lb-ft torque — it outperforms many V8s. See what deep breathing can do? It gives our 4.2L I6 the kind of power and torque many V8s will envy. But as important as having power is, it's even more important to have that power over a broad range of engine speeds and driving scenarios.

**Natural balance:** Of all the wonders of Rainier's remarkable 4.2L engine, this is a quality you'll probably appreciate every single day. This inline six-cylinder engine has a natural balance that virtually eliminates shaking and roughness at idle or any speed.

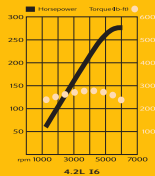
\*EPA estimated mpg: 15 city/21 hwy (AWD), 16 city/21 hwy (FWD) — preliminary figures.



C.

#### D. BROAD TORQUE CURVE MEANS POWER WHEN YOU NEED IT

Sometimes you need power coming off a stoplight. Or when you need to make a low-speed pass. Or while making a high-speed pass. The fact is, there are many times when you need all the power your engine can muster. An engine with an extended torque curve addresses those needs. And with 90% of its torque available between 1,600 and 5,600 rpm, and peak torque at 3,600 rpm, Rainier's 4.2L I6 can deliver the power to make you feel confident in virtually any driving situation.



4.2L I6

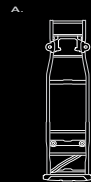


[ PLATE # ] Typically found in luxury car engines, the polymer-coated pistons on Rainier's available 5.3L V8 reduce engine noise.





[ PLATE 10 ] On the move. Rainier CXL in Platinum Metallic. Shown with available equipment.



**A. FULL LADDER FRAME WITH HYDROFORMED SIDE RAILS**

Some SUVs have utilized body construction – where the body itself must provide much of the strength of the vehicle. Our engineers think that’s fine for some SUV applications, but not for this Buick. So Rainier has a tough body-on-frame structure – a body firmly mounted to a full frame. Rainier gives its drivers world-class ride and handling and high standards in noise isolation. Rainier’s chassis design also incorporates fully hydroformed side rails along the entire length of the frame. Hydroforming uses the power of pressurized fluid sealed in a hollow round steel frame rail to help precisely form the shape of the rail for consistent steel wall thickness and dimensional control.

**B. ALL-WHEEL DRIVE WITH LOCKING DIFFERENTIAL**

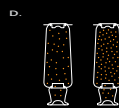
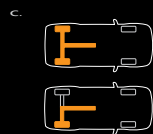
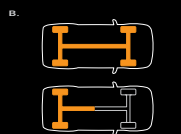
Rainier’s available on-demand all-wheel drive system is intuitive. Thanks to its technological sophistication, the driver doesn’t have to think about pushing buttons or pulling levers. The system is constantly monitoring road conditions. If it senses wheel spin, it reacts in 1/4 of a second and sends the right amount of power to the wheel or wheels with the most traction. Under normal conditions, when the vehicle is moving at less than 20 mph, Rainier’s active all-wheel drive system sends 100% of the power to the rear wheels. Above 20 mph, a small amount (about 15%) of the power is sent to the front wheels, even when no slippage is detected. This speed-sensitive system allows for up to 100% of torque to be transferred to the front axles during a slip condition, maximizing available wheel traction. When slippage is no longer detected, the system returns to its predominantly rear-wheel drive mode. It’s a fully automatic system drivers will love.

**C. TRACTION ASSIST AND LOCKING REAR DIFFERENTIAL**

Rear-wheel drive models have wheel-speed sensors that are constantly monitoring each drive wheel for signs of slipping. If they detect a slip event, they instantly send a signal to the power control computer which reduces the amount of fuel going to the engine. That slows the engine, reducing power to the slipping wheel until it gains traction once again. At lower speeds, the differential notices the slippage and locks the rear axle, sending power to both rear wheels. Together, these technologies can help the driver maintain control and regain traction through ice and snow.

**D. ELECTRONICALLY CONTROLLED AIR SUSPENSION**

Rainier’s independent front suspension incorporates a coil spring over Bilstein® shock absorber design with a double-A arm configuration for both four-wheel and two-wheel drive systems. So you get touring car precision with SUV toughness. But Rainier’s rear suspension is so sophisticated it’ll literally have you riding on air. This electronically controlled air suspension features air springs that are continually monitored by sensors that feed data to a compressor/control unit. The compressor inflates or deflates the air springs whenever necessary to give you three important benefits: load leveling – the system works to continually maintain the proper trim height of Rainier as it’s loaded or unloaded for stability and smoothness over the full load range; impressive damping – the air spring is continually tuned to give you an improved ride, even over rough or broken concrete surfaces; improved isolation – the air springs are made of rubber, which naturally retards noise travel from the axle up into the frame and into the cabin.



c o n t r o l

**A. GPS/DVD NAVIGATION SYSTEM**

Imagine your Rainier reading the signals coming from at least three global positioning satellites in high earth orbit, and using those signals to compute your exact position on the planet, give or take a few feet. Now imagine that data being fed into a sophisticated DVD-based navigation program that can show you exactly where you are on a virtual map sent to a screen on the instrument panel, and watch your position on the map move as you move down the road. That's what Rainier's available GPS/DVD navigation program can do. The system can also suggest best routes to your destination, as well as the locations of gas stations, restaurants and points of interest along the way.

**B. BOSE® PREMIUM SOUND SYSTEM**

This available Bose system is probably a better stereo than you'll find in most homes. Six Bose speakers are driven by six Bose amplifiers that have been equalized and optimized especially for the acoustic environment found in Rainier's interior. The amps deliver a total of 275 watts. There's an available six-disc CD changer integrated into the instrument panel. Pop-out controls. Multi-media capability. You can even select optimum performance for the driver, optimum performance for the rear-seat passengers, or balanced performance for all passengers.

**C. ONSTAR®**

A pioneering technology in the area of advanced in-vehicle safety and security, OnStar is your connection to 24-hour personal assistance whenever you need help on the road. By simply pressing the OnStar button, a highly trained Advisor will use global positioning satellites to locate your vehicle and contact whatever help you need — from area police, ambulance and hospitals, to the nearest tow truck or Buick dealership. If your air bags deploy in a collision, OnStar receives a signal and will contact you to see if you need assistance. Advisors can also work with police to help locate your vehicle if it's stolen, run remote diagnostics if your engine light comes on and send a signal to unlock your doors if you're locked out. A voice-activated cellular phone is also integrated into OnStar-equipped vehicles, offering hands-free calling. And with a more powerful signal, it often works in areas with limited cell phone reception.

OnStar services require vehicle electrical system and wireless service to be available and operating for features to function properly. OnStar relies on existing emergency service providers as well as wireless and satellite technologies and is subject to their limitations. Please refer to specifications in the back for details. States vehicle recovery success varies by condition.

Existing OnStar service contract and prepaid calling minutes required for Personal Calling feature. Personal Calling is the hands-free in-vehicle wireless phone mentioned previously. Available in most markets. OnStar voice recognition system may not work with all voices. Visit [onstar.com](http://onstar.com) for system limitations and details.

**D. DVD ENTERTAINMENT SYSTEM**

Mounted in the headliner between the first and second row of seats, this available DVD entertainment system has the capability of playing studio quality audio/video in both CD-audio and DVD formats. There's a flip-down seven-inch screen utilizing a color active-matrix liquid-crystal display; two wireless infrared headphones and an infrared remote control for rear-seat activation; video and audio RCA jacks for camcorder playback; ports for complete gaming capability; and even a parental switch on the front of the unit for stopping play and muting sound. Use it occasionally just to make sure the kids are still capable of human conversation.

**E. XM® SATELLITE RADIO**

Two satellites (one named "Rock," the other "Roll") hover in geosynchronous earth orbit beaming down CD-quality digital sound into your Rainier. Over 800 terrestrial repeaters fill in the signal whenever the line of sight with a satellite is lost. The digital signal delivers 100 percent commercial-free music with over 120 channels of the best in music, news, sports, talk, comedy and XM Instant Traffic & Weather. And you can receive the signal in all 48 coast-to-coast states. That's the attraction of XM. And that's why it's available on Rainier.

XM is available only in the 48 contiguous United States. Basic monthly subscription required and sold separately. Visit [gm.xmradio.com](http://gm.xmradio.com) for more details.

[ PLATE 12 ] Available DVD entertainment system — movies, games or camcorder playback at the flip of a screen.



[ PLATE 11 ] Available XM Satellite Radio — Over 120 channels of digital-quality sound, coast to coast. Available only in the 48 contiguous United States. Activation and service fees apply. Visit [gm.xmradio.com](http://gm.xmradio.com) for details.

[ PLATE 13 ] Available OnStar — ready to assist you in so many ways twenty-four hours a day.



A.

B.

PLATE 14 Rainier instrument panel with available GPS/DVD navigation system – folding maps is a thing of the past.



PLATE 15 Elegant chrome door handle surrounded by the warm look of dark burled walnut.



PLATE 16 Craftsmanship in every detail – Rainier doorsill plate.

PLATE 17.3 Rainier CXL in Platinum Metallic. Shown with dealer-installed chrome-accented assist steps and other available equipment.



BUICK: meet the new family



Terraza, LeSabre, Rainier, Park Avenue, Rendezvous and LaCrosse. That's the new Buick family for 2005. And while there are new models, new features and new excitement in our lineup this year, you can be sure that one thing has not changed. That is Buick's commitment to bring you beautifully designed, carefully crafted vehicles that will deliver exceptional satisfaction with every mile you drive.

*Buick is the Official Car of the PGA TOUR. Tiger Woods is the most acclaimed player in the game today. That's why we're so proud to be partnered with him. After all, Tiger delivers power, style and finesse every time he hits the course. And Buick is ready to deliver those very same qualities every time you hit the road.*

[ PLATE 18 ] Tiger Woods.

[ PLATES 19 - 21 ] The all-new Terraza, LeSabre, Rainier.

[ PLATES 22 - 23 ] Park Avenue, Rendezvous.

[ PLATE 24 ] The all-new LaCrosse.

