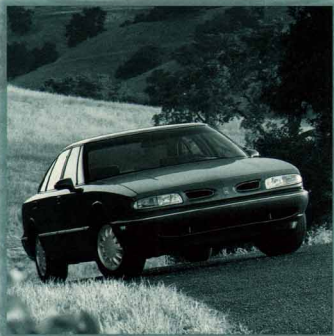


The 1996
EIGHTY EIGHT





Traditional comfort and advanced technology.

EIGHTY EIGHT — Standard features include the 3800 Series II V6 engine, 4-speed electronic-shift automatic transmission, dual air bags, anti-lock brakes, daytime running lamps, Twilight Sentinel automatic headlamp control, air conditioning, power windows, power door locks, TILT-Wheel adjustable steering column, cruise control, PASS-Key vehicle security system, and an AM/FM stereo with extended-range sound system and power antenna.



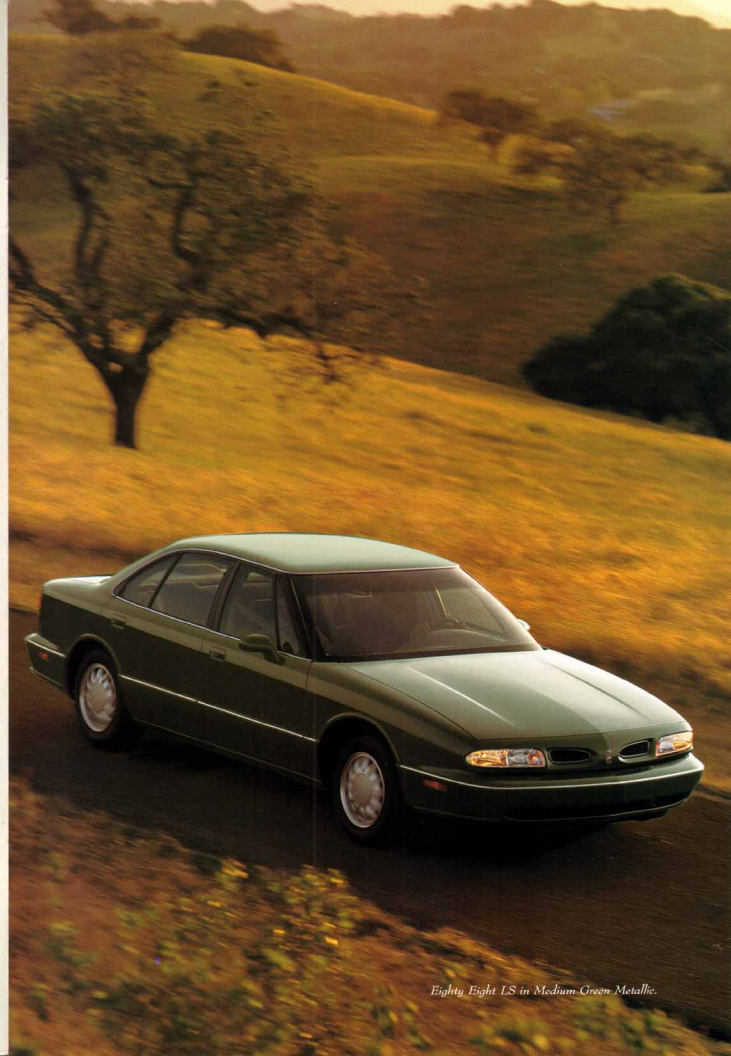
The ultimate Eighty Eight.

EIGHTY EIGHT LS — Additional standard features include an 8-way power driver's seat, remote-control keyless entry system, automatic programmable power door locks, power outside mirrors, rear-seat ventilation outlets, 15-inch aluminum wheels, and an AM/FM stereo with cassette player and 6-speaker Dimensional Sound system.



Guidestar Navigation Information System.

Available on both Eighty Eight models, Oldsmobile's exclusive Guidestar navigation information system puts immediate, easy-to-understand travel information at your fingertips. Using Global Positioning System satellites now circling in space, Guidestar actually tracks your vehicle and knows where you are at every moment. The system provides turn-by-turn routing instructions to local points of interest such as hotels and airports, or the most direct route to your destination. Availability is limited. Ask your local retailer for more information about this exciting new Oldsmobile feature.



STRAIGHTFORWARD
BUYING

OLDSMOBILE IS MAKING IT

EASIER TO BUY YOUR

EIGHTY EIGHT BY PACKAGING

THE MOST POPULAR

FEATURES INTO TWO

MODELS. THERE'S NO NEED

TO WADE THROUGH ENDLESS

LISTS OF OPTIONS, AND TO

MAKE IT EASIER STILL,

OLDSMOBILE SALES

CONSULTANTS ARE

SPECIALLY TRAINED TO

ANSWER YOUR QUESTIONS,

AND MAKE YOUR BUYING

EXPERIENCE ENJOYABLE.

Eighty Eight LS in Medium Green Metallic.



Eighty Eight in Bright White.

Full-size comfort with fresh new styling.



Available on Eighty Eight LS, an AM/FM stereo with both CD and cassette players creates superb sound quality.

Start with a high level of traditional comfort and luxury, add new exterior styling, and you get a contemporary automobile that's as good to look at as

it is to drive. That's the Oldsmobile Eighty Eight. The cabin is spacious and comfortable, and it's loaded with comfort and convenience features. Its power is both responsive and effortless. And the smooth, quiet ride will make your time on the road more enjoyable.



The 8-way power driver's seat uses a "metaphoric" switch for easy adjustment. Available on Eighty Eight, standard on Eighty Eight LS.

The 0-speaker Dimensional Sound system provides faithful music reproduction and sound imaging. Available on Eighty Eight, standard on Eighty Eight LS.



STRAIGHTFORWARD BUYING

OLDSMOBILE IS MAKING IT EASIER TO BUY YOUR EIGHTY EIGHT BY PACKAGING THE MOST POPULAR FEATURES INTO TWO MODELS. THERE'S NO NEED TO WADE THROUGH ENDLESS LISTS OF OPTIONS. AND TO MAKE IT EASIER STILL, OLDSMOBILE SALES CONSULTANTS ARE SPECIALLY TRAINED TO ANSWER YOUR QUESTIONS AND MAKE YOUR BUYING EXPERIENCE ENJOYABLE.

Spacious, comfortable and luxurious,
Eighty Eight's interior treats you with respect.



ECOLOGICALLY SOUND
GENERAL MOTORS IS
COMMITTED TO THE NATURE
CONSERVANCY* AND ITS
WORK OF PROTECTING
NATURAL HABITATS. GM
CONTRIBUTES GENEROUSLY
TO THE CONSERVANCY'S
EFFORTS AND DOES ITS
SHARE TO PROTECT THE
ENVIRONMENT BY USING
CFC-FREE REFRIGERANT
AND THE LATEST ON-BOARD
DIAGNOSTIC SYSTEM
(OBD-II) TO HELP REDUCE
ENGINE EMISSIONS.



Twilight Sentinel automatic headlamp control is standard on both Eighty Eight models.



Controls for the standard power windows and door locks are conveniently located on the armrest for easy adjustment.

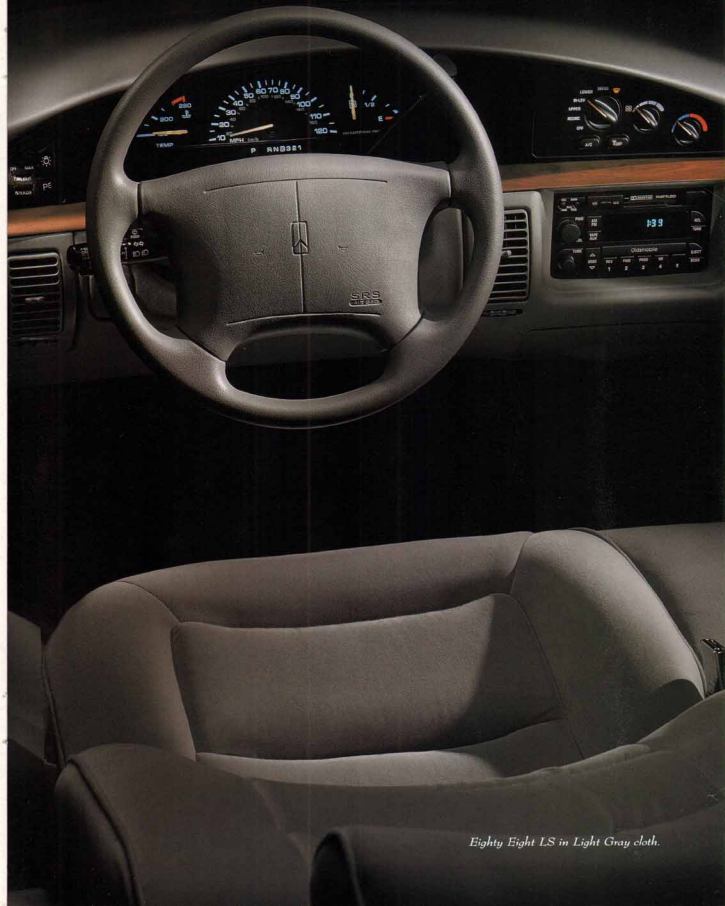
The full-size, 6-passenger interior of Eighty Eight is designed for long-term comfort and stress-free driving. The wide, 55/45 divided bench front seats with standard recliners are individually adjustable and upholstered in a rich fabric. The sweeping dash combined with the roomy cabin and a wealth of standard comfort and convenience features help create an inviting, luxurious environment that will keep you comfortable and relaxed no matter how

long your trip.



Luxurious leather-trimmed seating areas are available on Eighty Eight LS.

Standard interior features that enhance Eighty Eight LS comfort include an 8-way power driver's seat, AM/FM stereo with cassette player, 6-speaker Dimensional Sound system, cruise control, TILT-Wheel adjustable steering column, and much more.



RIDE AND HANDLING
WITH ITS FULLY
INDEPENDENT SUSPENSION
AND THE STABILITY OF
FRONT-WHEEL DRIVE,
EIGHTY EIGHT IS ABLE TO
DELIVER RESPONSIVE
HANDLING, EXCELLENT
BUMP ABSORPTION
AND CONTROLLED RIDE
MOTION. IT COMBINES THE
BEST OF TRADITIONAL
AMERICAN RIDE QUALITY
WITH THE PRECISION OF
ADVANCED SUSPENSION
ENGINEERING.

Eighty Eight LS in Light Gray cloth.



Eighty Eight LS in Light Gray cloth.



ECOLOGICALLY SOUND
GENERAL MOTORS IS
COMMITTED TO THE NATURE
CONSERVANCY* AND ITS
WORK OF PROTECTING
NATURAL HABITATS. GM
CONTRIBUTES GENEROUSLY
TO THE CONSERVANCY'S
EFFORTS AND DOES ITS
SHARE TO PROTECT THE
ENVIRONMENT BY USING
CFC-FREE REFRIGERANT
AND THE LATEST ON-BOARD
DIAGNOSTIC SYSTEM
(OBD-II) TO HELP REDUCE
ENGINE EMISSIONS.



Eighty Eight LS in Medium Green Metallic.



RISE AND HANDLING
WITH ITS FULLY
INDEPENDENT SUSPENSION
AND THE STABILITY OF
FRONT-WHEEL DRIVE,
EIGHTY EIGHT IS ABLE TO
DELIVER RESPONSIVE
HANDLING, EXCELLENT
BUMP ABSORPTION
AND CONTROLLED RIDE
MOTION. IT COMBINES THE
BEST OF TRADITIONAL
AMERICAN RIDE QUALITY
WITH THE PRECISION OF
ADVANCED SUSPENSION
ENGINEERING.



ECOLOGICALLY SOUND
 GENERAL MOTORS IS
 COMMITTED TO THE NATURE
 CONSERVANCY* AND ITS
 WORK OF PROTECTING
 NATURAL HABITATS. GM
 CONTRIBUTES GENEROUSLY
 TO THE CONSERVANCY'S
 EFFORTS AND DOES ITS
 SHARE TO PROTECT THE
 ENVIRONMENT BY USING
 CFC-FREE REFRIGERANT
 AND THE LATEST ON-BOARD
 DIAGNOSTIC SYSTEM
 (OBD-II) TO HELP REDUCE
 ENGINE EMISSIONS.



Eighty Eight LS in Light Beige Metallic.

Full-sized and fully equipped,
 yet amazingly sure-footed and smooth.

Oldsmobile Eighty Eight is the
 embodiment of a powerful full-size
 family sedan. It's a vehicle capable

of effortlessly rolling up endless
 miles on the interstate. And it can

just as easily negotiate uneven road surfaces without upsetting its

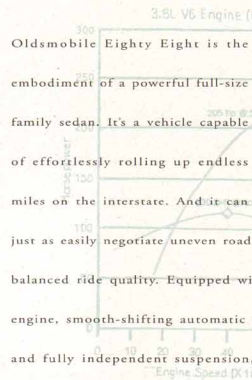
balanced ride quality. Equipped with a powerful and refined V6

engine, smooth-shifting automatic transmission, anti-lock brakes

and fully independent suspension, Eighty Eight goes about its

business quietly and smoothly. It delivers world-class performance

in a traditional American sedan.



*The potent 3800 Series II V6 engine has been
 rated as one of the world's "ten best engines" by
 Ward's Auto World, January 1995.*



RIDE AND HANDLING

WITH ITS FULLY
 INDEPENDENT SUSPENSION
 AND THE STABILITY OF
 FRONT-WHEEL DRIVE,
 EIGHTY EIGHT IS ABLE TO
 DELIVER RESPONSIVE
 HANDLING, EXCELLENT
 BUMP ABSORPTION
 AND CONTROLLED RIDE
 MOTION. IT COMBINES THE
 BEST OF TRADITIONAL
 AMERICAN RIDE QUALITY
 WITH THE PRECISION OF
 ADVANCED SUSPENSION
 ENGINEERING.

*The 4-wheel independent suspension system helps smooth out
 the bumps, yet provides precise, controlled handling and response.*

Standard features that contribute to Eighty Eight's performance include
 the 3800 Series II V6 engine, 4-speed electronic-shift automatic transmission, fully
 independent suspension, power rack-and-pinion steering system, and much more.

With its built-in safety features,
Eighty Eight inspires a high level of confidence.



SAFETY

OLDSMOBILE TAKES A SYSTEMS APPROACH TO SAFETY. IT BEGINS AT THE DESIGN STAGE WITH A STRONG STRUCTURE, COUPLED WITH AN AGILE SUSPENSION AND A RESPONSIVE STEERING SYSTEM THAT HELPS YOU AVOID A COLLISION. SINCE BEING SEEN BY ONCOMING TRAFFIC IS IMPORTANT TO SAFETY, EIGHTY EIGHT IS EQUIPPED WITH DAYTIME RUNNING LAMPS.



Standard anti-lock brakes help maintain steering ability under maximum braking effort.

Eighty Eight's safety engineering begins the moment the first steel panels are welded together. The steel itself, except the roof, is galvanized on both sides to resist the weakening effects of corrosion. The structure has been carefully

designed and stringently tested so that, if a collision occurs, impact forces will be absorbed and directed away from the passenger compartment. A dual air bag system*, specially padded and contoured interior surfaces, and the use



of fire-retardant materials further enhance the protective envelope that is designed into the Eighty Eight structure.

The remote-control keyless entry system, standard on Eighty Eight LS, features a panic button to enhance your security.

Standard features that enhance Eighty Eight's safety and security include anti-lock brakes, steel safety-cage body structure with front and rear crush zones, daytime running lamps, rear door child-security locks, illuminated entry/exit system, rear outboard safety belts with Child Comfort Guides, and the PASS-Key vehicle security system. In addition, a full-speed traction control system is available on Eighty Eight LS.

Always wear your safety belts, even with air bags.



OWNER AFTERCARE
IN ADDITION TO OUR
3-YEAR/36,000-MILE
(WHICHEVER COMES FIRST)
BUMPER-TO-BUMPER LIMITED
WARRANTY, WE ALSO OFFER
COURTESY TRANSPORTATION,
FREE TRIP ROUTING AND
24-HOUR ROADSIDE
ASSISTANCE BY CALLING
1-800-442-0L68.
AT OLDSMOBILE, WE'RE
COMMITTED TO YOUR
SATISFACTION LONG AFTER
THE PURCHASE OF
YOUR CAR.

Eighty Eight LS in Light Beige Metallic.

Eighty Eight Equipment

MODEL	SAFETY AND SECURITY	
	EIGHTY EIGHT	EIGHT EIGHT LS
Anti-lock power front disc/rear drum brakes	■	■
Brake/transmission shift interlock	■	■
Electronic traction control	■	■
Dual air bags	■	■
3-point front and rear outboard safety belts with front height adjustment and rear Child Comfort Guides, plus front and rear center lap belts	■	■
Rear door child security locks	■	■
Remote-control keyless entry system with illumination features and retained accessory power; includes two key-chain transmitters with panic button and chirp feature	-	■
Illuminated entry/exit system	■	■
PASS-Key vehicle security system	■	■
Daytime running lamps	■	■
Haloless headlamps with Halo-to-pure feature	■	■
Side and electric rear window defoggers	■	■
Dual outside mirrors with driver's remote	■	-
Dual power outside mirrors	-	■

MECHANICAL

3800 Series II V6 engine with sequential port fuel injection	■	■
4-speed electronic-shift automatic transmission	■	■
Front-wheel drive	■	■
Power rack-and-pinion steering	■	■
4-wheel independent suspension	■	■
On-board diagnostic system (OBD-II)	■	■
Maintenance-free battery	■	■
High-capacity engine cooling equipment	■	■
Stainless steel exhaust system	■	■
Engine block heater	□	□

EXTERIOR

15-inch balloon wheel discs	■	-
15-inch aluminum wheels	□	■
P205/70R15 black sidewall all-season radial tires	■	■
Soft-Ray tinted side windows with EZ-Kool® side-control windshield and rear window	■	■
Falce wipers	■	■

MODEL	COMFORT AND CONVENIENCE	
	EIGHTY EIGHT	EIGHT EIGHT LS
Air conditioning with CFC-free refrigerant	■	-
Rear-seat ventilation outlets	-	■
Twilight Sentinel automatic headlamp control	■	■
Cruise control	■	■
Power door locks (automatic programmable on LS)	■	■
TILT/Wheel adjustable steering column	■	■
Power windows with driver's auto-down	■	■
analog gauge cluster	■	■
Auxiliary 12-volt power outlet	■	■
Lighting package (includes courtesy, glove box, ashtray and trunk lamps, plus floodlight door-mounted controls)	■	■
Dual front and rear reading lamps	-	■
Dual sun visors with auxiliary sunshades	■	■
Dual lighted visor vanity mirrors	■	■
Map pockets in front doors and seat backs	■	■
Halo lamp and turn signal reminder chimes	■	■
Reminders for washer fluid and ignition key on	■	■
Deluxe trunk trim with cargo net	■	■
Power trunk lock release	■	■

AUDIO SYSTEMS

Dolby ETR AM/FM stereo with radio scan, digital clock & 4-speaker extended-range sound system and power antenna	■	-
Dolby ETR AM/FM stereo with cassette player, automatic tone control, radio scan, digital clock, 6-speaker Dimensional Sound system and power antenna	□	■
Dolby ETR AM/FM stereo with CD and cassette player, automatic tone control, radio scan, digital clock, 6-speaker Dimensional Sound system and power antenna	-	□

SEATING AND TRIM

55/45 divided bench front seat with dual recliners and center storage armrest with cupholders	■	■
8-way power driver's seat	□	■
Cloth interior trim	■	■
Leather-trimmed seating areas (includes rear center storage armrest with cupholders)	-	□
Carpeted front and rear floor mats	■	■
Standard □ Optional ■ Not available		

Color Combinations

EXTERIOR COLORS	INTERIOR COLOR AND LEATHER COLORS			
	GRAPHITE**	BLUE**	LIGHT GRAY	LIGHT BEIGE
Medium Gray Metallic (03)	■	■	■	■
Bright White (10)	■	■	■	■
Light Blue Metallic (30)	■	■	■	■
Black (41)	■	■	■	■
Medium Green Metallic (42)	■	■	■	■
Medium Green Gray Metallic (47)	■	■	■	■
Dark Green Metallic (48)	■	■	■	■
Light Beige Metallic (50)	■	■	■	■
Red Metallic (72)	■	■	■	■
Dark Red Metallic (77)	■	■	■	■

*Leather trim available on LS only. **Available on LS only.



The paint color samples shown above may vary slightly from actual vehicle color due to the printing process.

Eighty Eight Specifications

EXTERIOR DIMENSIONS	
Wheelbase (in)	110.8
Length (in)	201.6
Width (in)	74.7
Height (in)	55.7
Curb weight (lb)	3465
Tread width, front/rear (in)	60/460.4
Turning circle (ft, curb-to-curb)	40.7/39/39.4 right
INTERIOR DIMENSIONS	
Headroom, front/rear (in)	38.7/38.3
Legroom, front/rear (in)	42.5/38.7
Shoulder room, front/rear (in)	59.0/58.3
CAPACITIES	
Seating capacity (passengers)	6
Trunk volume (cu ft)	179
Fuel capacity (gal)	18.0

EPA ESTIMATED FUEL ECONOMY

3800 Series II V6 (mpg, city/hwy)

ENGINE	POWER TEAM		3800 SERIES II V6	
	City	Hwy	City	Hwy
Displacement	3.8	3.8	123	123
Horsepower	205	205	200	200
Torque (lb-ft)	230	230	230	230
Fuel delivery	Sequential port fuel injection		Sequential port fuel injection	
Transmission	4-speed electronic-shift automatic		4-speed electronic-shift automatic	



OWNER AFTER-CARE

IN ADDITION TO OUR

3-YEAR/36,000-MILE

(WHICHEVER COMES FIRST)

BUMPER-TO-BUMPER LIMITED

WARRANTY, WE ALSO OFFER

COURTESY TRANSPORTATION,

FREE TRIP ROUTING AND

24-HOUR ROADSIDE

ASSISTANCE BY CALLING

1-800-442-OLDS.

AT OLDSMOBILE, WE'RE

COMMITTED TO YOUR

SATISFACTION LONG AFTER

THE PURCHASE OF

YOUR CAR.

A Word about Oldsmobile

THE GM CARD

Every time you use the no-annual-fee GM MasterCard® GM will credit 5% of your purchase toward buying or leasing a new Oldsmobile. The credit means saving hundreds, even thousands, of dollars. Call 1-800-8GM-CARD for more information, including annual limits and restrictions.

ACCELERATED EARNINGS NETWORK 1-800-947-1000
Visit participating GM retailers for up to 10% in GM CARD earnings on eligible parts and service transactions. Call 1-800-947-1000 for more information.

SMARTLEASE BY GMAC
Smart Lease lets qualified customers pay for the portion of the vehicle they use, rather than paying for the entire vehicle as you would with traditional financing. You'll also enjoy lower up-front costs and lower monthly payments. Plus, you'll be able to drive a new vehicle more often or drive a higher-priced model. Ask your Oldsmobile retailer for more information.

FOR OCCUPANT PROTECTION

• Driver and right front passenger Supplemental Inflatable Restraints
• Manual lap/shoulder safety belts, driver and right front passenger • Manual lap/shoulder safety belts, outboard rear-seat positions • Manual lap safety belts, center seat positions • Safety belt use reminder system • Energy-absorbing steering column • Energy-absorbing instrument panel • Laminated windshield glass, urethane bonded • Tempered safety glass, side and rear windows
• Interlocking door latches • Side door beams • Passenger-guard inside door lock latches • Safety anchors • Head restraints, front adjustable, driver and right front passenger • Dual sun visors • Break-away inside rearview mirror • Security door locks and door retention components • Rear door child-security locks • Power window lockout • Front and rear crush zones • Pressure lock radiator cap

FOR CRASH AVOIDANCE

• Automatic daytime running lamps • Side marker lamps and reflectors • Backup lamp • 8-way hazard warning flashers • Backup lamps • Center high-mounted stoplamp • Directional signal control • Windshield defroster, washer and multi-speed wipers • Inside day/night rearview mirror • Outside rearview mirrors • Brake system with dual master cylinder plus warning light • Anti-lock brakes • Starter safety switch • Dual-action hood latch (front opening) • Low-glare finish (inside windshield moldings, wiper arms and blades) • Safety recall alert time • Tires with built-in tread wear indicators • Illuminated leather and defroster controls • Brake/transmission shift interlock • Audible disc brake lining wear indicators • Electric rear window defogger • Door warning lights/reflectors

FOR THEFT DETERRENCE

• PASS-Key vehicle security system • Theft-deterrent steering column lock • Theft-deterrent key locking system • Ignition key removal audible reminder • Remote inside hood release • Vehicle identification number • Laser-etched VIN plate

The 1996
OLDSMOBILES



Aurora



Ciera Sedan



Ninety Eight



Ciera Wagon



LSS



Achieva Sedan



Eighty Eight



Achieva Coupe



Cutlax Supreme Sedan



Silhouette



Cutlax Supreme Coupe



Bravada



© 1995 GM



Official Sponsor of the
1996 U.S. Olympic Team