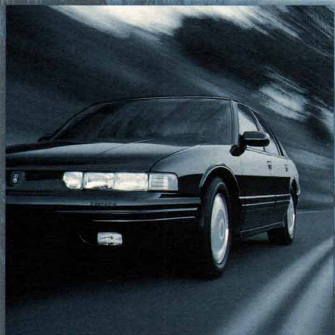


The 1996
CUTLASS SUPREME





Practicality and performance.

SERIES I — Standard features include a 3100 SFI V6 engine, 4-speed electronic-shift automatic transmission, 4-wheel anti-lock disc brakes, dual air bags, air conditioning, power windows, automatic programmable power door locks, power outside mirrors, PASS-Key vehicle security system, cruise control, TILT-Wheel adjustable steering column, illuminated entry system, foglamps, and an AM/FM stereo with cassette player and extended-range speakers.



An added measure of style and convenience.

SERIES II — Additional standard features include a remote-control keyless entry system, distinctive and sporty 16-inch aluminum wheels (5-spoke style standard on coupe; "starfish" style standard on sedan), and a Sport Luxury Package including performance tires and leather-wrapped steering wheel and shifter.



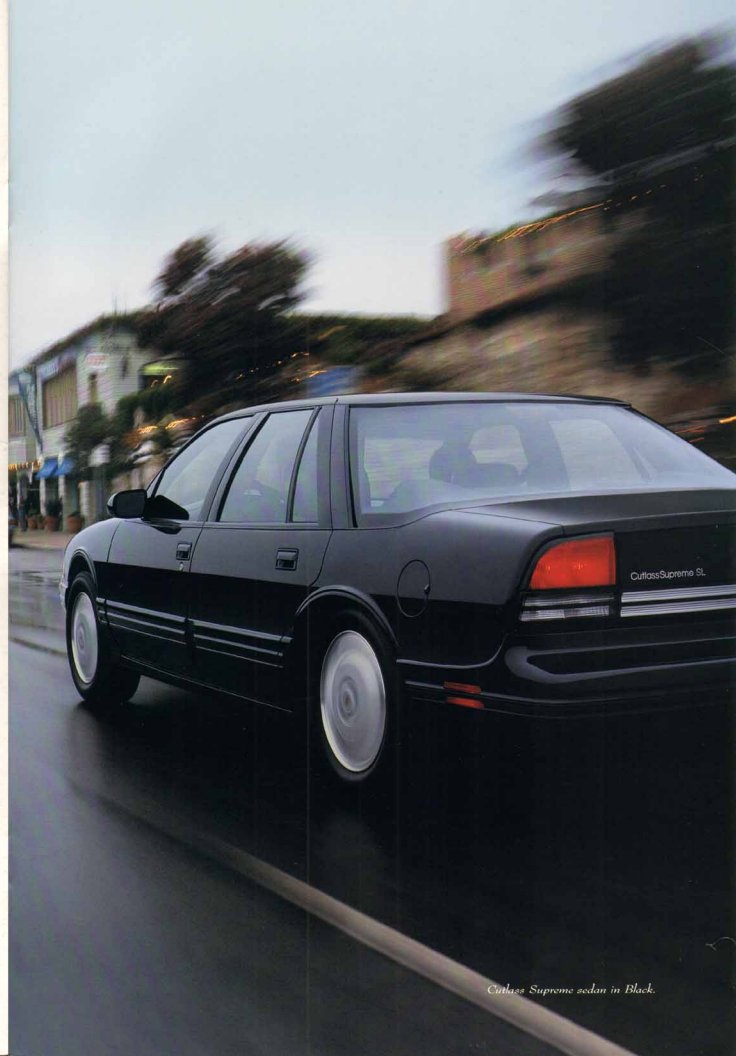
Equipped to set new standards.

SERIES III — Additional standard features include variable-effort steering, 6-speaker Dimensional Sound system, power antenna and split-folding rear seat back.



The ultimate expression of Supreme luxury.

SERIES IV — Additional standard features include leather-trimmed seating areas, dual-zone automatic climate control, steering wheel touch controls, 6-way power driver's seat, and an AM/FM stereo with both compact disc and cassette players.



STRAIGHTFORWARD BUYING

OLDSMOBILE IS MAKING IT EASIER TO BUY YOUR CUTLASS SUPREME BY PACKAGING THE MOST POPULAR FEATURES INTO FOUR COMPREHENSIVE SERIES. THERE'S NO NEED TO WADE THROUGH ENDLESS LISTS OF OPTIONS. AND TO MAKE IT EASIER STILL, OLDSMOBILE SALES CONSULTANTS ARE SPECIALLY TRAINED TO ANSWER YOUR QUESTIONS AND MAKE YOUR BUYING EXPERIENCE ENJOYABLE.

Cutlass Supreme sedan in Black.



Cutlass Supreme sedan in Black.



STRAIGHTFORWARD
BUYING

OLDSMOBILE IS MAKING IT
EASIER TO BUY YOUR
CUTLASS SUPREME BY
PACKAGING THE MOST
POPULAR FEATURES INTO
FOUR COMPREHENSIVE
SERIES. THERE'S NO NEED TO
WADE THROUGH ENDLESS
LISTS OF OPTIONS, AND TO
MAKE IT EASIER STILL,
OLDSMOBILE SALES
CONSULTANTS ARE
SPECIALLY TRAINED TO
ANSWER YOUR QUESTIONS
AND MAKE YOUR BUYING
EXPERIENCE ENJOYABLE.



Cutlass Supreme coupe in Bright Red.

Driving pleasure meets practicality —
in beautiful style.



*The Cutlass Supreme sedan
combines sophisticated performance
with functional utility.*

In the boldly aggressive Cutlass Supreme, expressive styling and the sheer fun of driving blend seamlessly with family-style utility. Ample power from an advanced V6 engine and the sure-footed agility of 4-wheel independent suspension make Cutlass Supreme a true driver's machine. Dual air bags, anti-lock brakes and a spacious interior round out a very impressive package. And with its four Series to choose from, you can have a well-equipped Cutlass Supreme that's sure to fit your budget.



Wraparound rear glass, pillar-mounted door handles and mini-quad headlamps give the Cutlass Supreme coupe an aggressive look.



**STRAIGHTFORWARD
BUYING**

OLDSMOBILE IS MAKING IT
EASIER TO BUY YOUR
CUTLASS SUPREME BY
PACKAGING THE MOST
POPULAR FEATURES INTO
FOUR COMPREHENSIVE
SERIES. THERE'S NO NEED TO
WADE THROUGH ENDLESS
LISTS OF OPTIONS. AND TO
MAKE IT EASIER STILL,
OLDSMOBILE SALES
CONSULTANTS ARE
SPECIALLY TRAINED TO
ANSWER YOUR QUESTIONS
AND MAKE YOUR BUYING
EXPERIENCE ENJOYABLE.

Welcome to your
home away from home.



ECOLOGICALLY SOUND
GENERAL MOTORS IS
COMMITTED TO THE NATURE
CONSERVANCY® AND ITS
WORK OF PROTECTING
NATURAL HABITATS. GM
CONTRIBUTES GENEROUSLY
TO THE CONSERVANCY'S
EFFORTS AND DOES
ITS SHARE TO PROTECT THE
ENVIRONMENT BY USING
CFC-FREE REFRIGERANT,
LONG-LIFE ENGINE COOLANT
AND THE LATEST ON-BOARD
DIAGNOSTIC SYSTEM
(OBD-II) TO HELP REDUCE
ENGINE EMISSIONS.



Rich fabrics and a surprising array of convenience features characterize the Cutlass Supreme's quiet, spacious cabin.

Settle into the Cutlass Supreme's spacious and accommodating interior, and "competitive" cars don't seem very competitive. Cutlass Supreme features supportive, contoured front

bucket seats and a gracefully sculpted, easy-to-read instrument panel. All controls have been located precisely



The dual-zone climate control system is standard on Series IV models, enabling the front-seat passenger to adjust the temperature to his or her comfort level.

for convenience and ease of use. And to enhance your driving pleasure, Cutlass Supreme Series IV features standard steering wheel touch controls.



Let the sunshine (or moonlight) in with the power sliding sunroof. This feature is available on Series IV coupes and sedans.

Other features that contribute to Cutlass Supreme's interior comfort include air conditioning, power windows, mirrors and doors locks, center storage console, cruise control, TILT-Wheel adjustable steering column, illuminated entry system, and an AM/FM stereo with cassette player.



Cutlass Supreme Series IV with seating areas trimmed in Medium Beige leather.



ABILITY
A SUBTLE BALANCE
BETWEEN RIDE COMFORT
AND PRECISE WHEEL
CONTROL IS THE KEY TO
CUTLASS SUPREME'S
ATHLETIC ROAD FEEL.
A CAREFULLY TUNED, FULLY
INDEPENDENT SUSPENSION
SYSTEM LAYS THE
FOUNDATION, AIDED
BY POWER BACK-AND-FORWARD
STEERING AND ANTI-LOCK
DISC BRAKES. CUTLASS
SUPREME COMBINES THE
COMFORTING STABILITY OF
A FINE FAMILY CAR WITH THE
QUICK REFLEX OF A TRUE
ROAD MACHINE.



ECOLOGICALLY SOUND

GENERAL MOTORS IS COMMITTED TO THE NATURE CONSERVANCY® AND ITS WORK OF PROTECTING NATURAL HABITATS. GM CONTRIBUTES GENEROUSLY TO THE CONSERVANCY'S EFFORTS AND DOES ITS SHARE TO PROTECT THE ENVIRONMENT BY USING CFC-FREE REFRIGERANT, LONG-LIFE ENGINE COOLANT AND THE LATEST ONBOARD DIAGNOSTIC SYSTEM (OBDII) TO HELP REDUCE ENGINE EMISSIONS.



Cutlass Supreme Series IV with seating areas trimmed in Medium Boige leather.



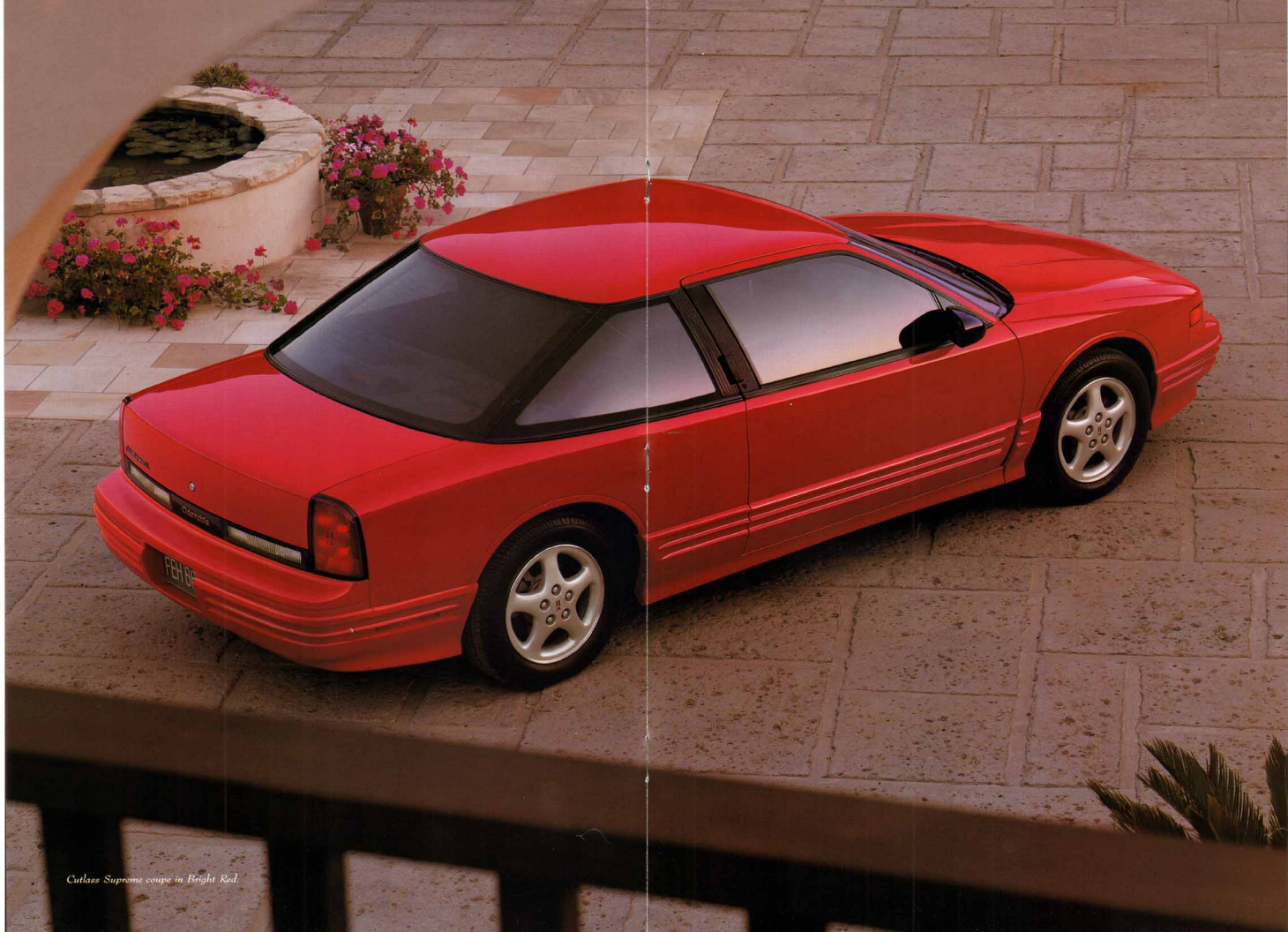
AGILITY

A SUBTLE BALANCE BETWEEN RIDE COMFORT AND PRECISE WHEEL CONTROL IS THE KEY TO OUTLASS SUPREME'S ATHLETIC ROAD FEEL. A CAREFULLY TUNED, FULLY INDEPENDENT SUSPENSION SYSTEM LAYS THE FOUNDATION, AIDED BY POWER BACKHAND-PINION STEERING AND ANTI-LOCK DISC BRAKES. OUTLASS SUPREME COMBINES THE COMFORTING STABILITY OF A FINE FAMILY CAR WITH THE QUICK REFLEXES OF A TRUE ROAD MACHINE.



ECOLOGICALLY SOUND

GENERAL MOTORS IS COMMITTED TO THE NATURE CONSERVANCY[®] AND ITS WORK OF PROTECTING NATURAL HABITATS. GM CONTRIBUTES GENEROUSLY TO THE CONSERVANCY'S EFFORTS AND DOES ITS SHARE TO PROTECT THE ENVIRONMENT BY USING CFC-FREE REFRIGERANT, LONG-LIFE ENGINE COOLANT AND THE LATEST ON-BOARD DIAGNOSTIC SYSTEM (OBD-II) TO HELP REDUCE ENGINE EMISSIONS.



Cutlass Supreme coupe in Bright Red.



ABILITY

A SUBTLE BALANCE BETWEEN RIDE COMFORT AND PRECISE WHEEL CONTROL IS THE KEY TO CUTLASS SUPREME'S ATHLETIC ROAD FEEL. A CAREFULLY TUNED, FULLY INDEPENDENT SUSPENSION SYSTEM LAYS THE FOUNDATION, AIDED BY POWER RACK-AND-PINION STEERING AND ANTI-LOCK DISC BRAKES. CUTLASS SUPREME COMBINES THE COMFORTING STABILITY OF A FINE FAMILY CAR WITH THE QUICK REFLEXES OF A TRUE ROAD MACHINE.



ECOLOGICALLY SOUND

GENERAL MOTORS IS COMMITTED TO THE NATURE CONSERVANCY® AND ITS WORK OF PROTECTING NATURAL HABITATS. GM CONTRIBUTES GENEROUSLY TO THE CONSERVANCY'S EFFORTS AND DOES ITS SHARE TO PROTECT THE ENVIRONMENT BY USING CFC-FREE REFRIGERANT, LONG-LIFE ENGINE COOLANT AND THE LATEST ON-BOARD DIAGNOSTIC SYSTEM (OBD-II) TO HELP REDUCE ENGINE EMISSIONS.



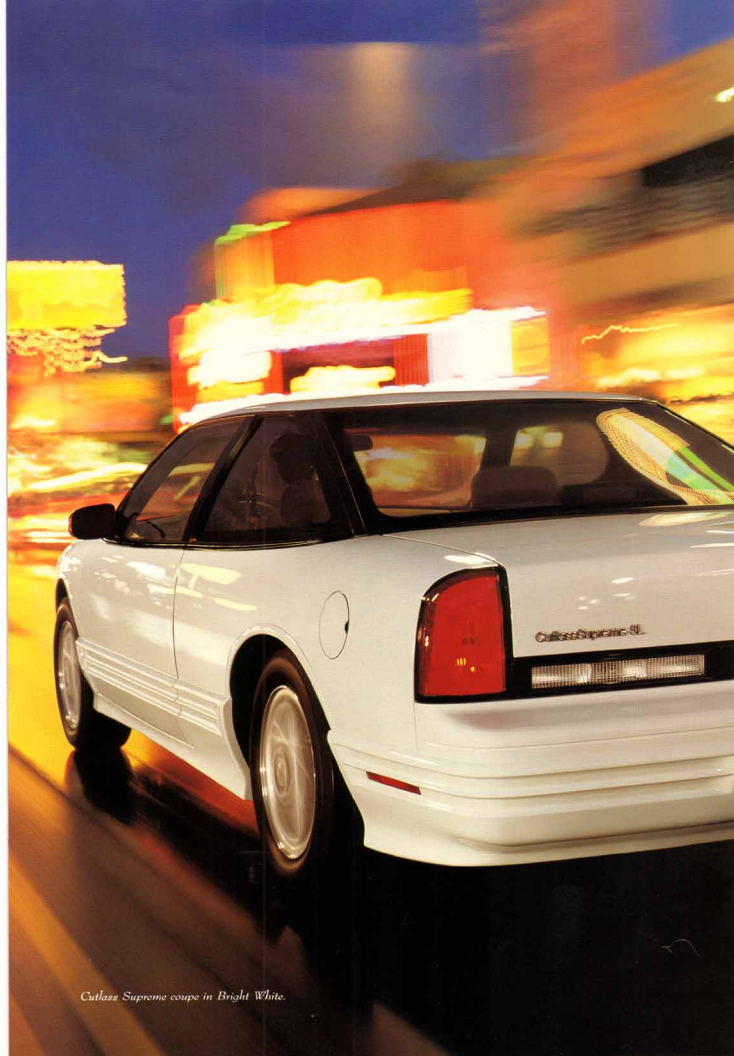
Cutlass Supreme coupe in Bright White.



ABILITY

A SUBTLE BALANCE BETWEEN RIDE COMFORT AND PRECISE WHEEL CONTROL IS THE KEY TO CUTLASS SUPREME'S ATHLETIC ROAD FEEL. A CAREFULLY TUNED, FULLY INDEPENDENT SUSPENSION SYSTEM LAYS THE FOUNDATION, AIDED BY POWER RACK-AND-PINION STEERING AND ANTI-LOCK DISC BRAKES. CUTLASS SUPREME COMBINES THE COMFORTING STABILITY OF A FINE FAMILY CAR WITH THE QUICK REFLEXES OF A TRUE ROAD MACHINE.


 ECOLOGICALLY SOUND
 GENERAL MOTORS IS
 COMMITTED TO THE NATURE
 CONSERVANCY* AND ITS
 WORK OF PROTECTING
 NATURAL HABITATS. GM
 CONTRIBUTES GENEROUSLY
 TO THE CONSERVANCY'S
 EFFORTS AND DOES
 ITS SHARE TO PROTECT THE
 ENVIRONMENT BY USING
 CFC-FREE REFRIGERANT,
 LONG-LIFE ENGINE COOLANT
 AND THE LATEST ONBOARD
 DIAGNOSTIC SYSTEM
 (OBDII) TO HELP REDUCE
 ENGINE EMISSIONS.



Cutlass Supreme coupe in Bright White.

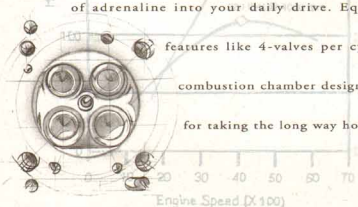
One touch of the pedal
will convince you these engines
are built for the road.

Advanced engineering makes Cutlass Supreme the kind of car you want to drive just for the fun of it. But it also makes it a car that you can depend on. For 1996, the standard 3100 SFI V6

is quieter and more maintenance-free with 100,000-mile tune-up intervals, long-life engine coolant and durable platinum-tipped spark

plugs. The available 3.4-liter DOHC V6 injects a healthy dose of adrenaline into your daily drive. Equipped with advanced

features like 4-valves per cylinder and a pentroof combustion chamber design, it makes a strong case for taking the long way home.



The potent 3.4-liter DOHC V6, breathing through 4 valves per cylinder, produces an impressive 215 horsepower at 5200 rpm and 220 lb-ft of torque at 4000 rpm.

Cutlass Supreme performance features include a 3100 SFI V6 engine, 4-wheel independent suspension, anti-lock brakes, and an electronically controlled 4-speed automatic transmission. The available 3.4-liter V6 engine package includes dual exhaust, variable-effort power steering, rear aero wing (coupe), and special performance suspension and tires.



AGILITY
 A SUBTLE BALANCE
 BETWEEN RIDE COMFORT
 AND PRECISE WHEEL
 CONTROL IS THE KEY TO
 CUTLASS SUPREME'S
 ATHLETIC ROAD FEEL.
 A CAREFULLY TUNED, FULLY
 INDEPENDENT SUSPENSION
 SYSTEM LAYS THE
 FOUNDATION, AIDED
 BY POWER RACK-AND-PINION
 STEERING AND ANTI-LOCK
 DISC BRAKES. CUTLASS
 SUPREME COMBINES THE
 COMFORTING STABILITY OF
 A FINE FAMILY CAR WITH THE
 QUICK REFLEXES OF A TRUE
 ROAD MACHINE.



A reliable ally in a hostile world.



SAFETY

CUTLASS SUPREME'S SAFETY
ENGINEERING GOES BEYOND

COLLISION AVOIDANCE
AND OCCUPANT PROTECTION.

IT ALSO INCLUDES ITEMS

DESIGNED FOR YOUR

PERSONAL SAFETY AND

SECURITY, SUCH AS THE

PASS-KEY THEFT-DETERRENT

SYSTEM, AUTOMATIC

PROGRAMMABLE POWER

DOOR LOCKS AND

ILLUMINATED ENTRY.



*Standard anti-lock brakes modulate
brake line pressure to prevent
wheel lockup and help the driver
maintain steering control
under maximum braking effort.*

When a collision is imminent, it's too late to go
back to the drawing board. That's why Cutlass

Supreme is engineered with painstaking care as
a total system — to help the driver avoid a

hazard if at all possible, and just as important,
to provide a protective environment for the

passengers should an impact occur. To enhance

collision avoidance, Cutlass Supreme features

anti-lock brakes and the stability and traction of

front-wheel drive. And to help protect the

occupants, standard features include dual air

bags,* crush zones and safety-cage construction.



*The remote-control keyless entry
system (standard on Series II,
III and IV) can unlock the doors
from up to 15 feet away.*

Other features that contribute to Cutlass Supreme's safety include 4-wheel
anti-lock disc brakes, side window and electric rear window defoggers, halogen
headlamps, foglamps, and 3-point safety belts for front and rear outboard occupants.

Always wear your safety belts, even with air bags.



OWNER AFTERCARE

IN ADDITION TO OUR

3-YEAR/36,000-MILE

(WHICHEVER COMES FIRST)

BUMPER-TO-BUMPER LIMITED

WARRANTY, WE ALSO OFFER

COURTESY TRANSPORTATION,

FREE TRIP ROUTING AND

24-HOUR ROADSIDE

ASSISTANCE BY CALLING

1-800-462-0LD6.

AT OLDSMOBILE, WE'RE

COMMITTED TO YOUR

SATISFACTION LONG AFTER

THE PURCHASE OF

YOUR CAR.



SAFETY

CUTLASS SUPREME'S SAFETY

ENGINEERING GOES BEYOND

COLLISION AVOIDANCE

AND OCCUPANT PROTECTION.

IT ALSO INCLUDES ITEMS

DESIGNED FOR YOUR

PERSONAL SAFETY AND

SECURITY, SUCH AS THE

PASS-KEY THEFT-DETERRENT

SYSTEM, AUTOMATIC

PROGRAMMABLE POWER

DOOR LOCKS AND

ILLUMINATED ENTRY.



Cutlass Supreme sedan in Medium Beige Metallic.



OWNER AFTERCARE

IN ADDITION TO OUR

3-YEAR/36,000-MILE

(WHICHEVER COMES FIRST)

BUMPER-TO-BUMPER LIMITED

WARRANTY, WE ALSO OFFER

COURTESY TRANSPORTATION,

FREE TRIP ROUTING AND

24-HOUR ROADSIDE

ASSISTANCE BY CALLING

1-800-442-OLDS.

AT OLDSMOBILE, WE'RE

COMMITTED TO YOUR

SATISFACTION LONG AFTER

THE PURCHASE OF

YOUR CAR.

Cutlass Supreme Equipment

SAFETY AND SECURITY			
SERIES		I	III (II) IV
4-wheel anti-lock disc brakes	■	■	■
Dual air bags	■	■	■
3-point front and rear outboard safety belts (with front height adjustment on seats), and front and rear center lap belts (front with bench seat only)	■	■	■
Brake/transmission shift interlock	■	■	■
Automatic programmable power door locks	■	■	■
Remote-control keyless entry system	-	■	■
PASS-Key vehicle security system	■	■	■
Illuminated entry system	■	■	■
Halogen headlamps plus foglamps	■	■	■
Side and electric rear window defoggers	■	■	■
Dual power outside mirrors	■	■	■

MECHANICAL

3100 SFI V6 engine	■	■	■
3.4-liter DOHC V6 engine (includes rear aero wing on coupe, dual exhaust, special suspension, P225/60R16 performance tires and variable-effort steering)	-	□	□
4-speed electronic-shift automatic transmission	■	■	■
Power rack-and-pinion steering	■	■	■
Variable-effort steering	-	■	■
4-wheel independent suspension	■	■	■
On-board diagnostic system (OBD-II)	■	■	■
Maintenance-free battery	■	■	■
Engine block heater	□	□	□

EXTERIOR

15-inch hollow wheel discs	■	■	■
16-inch 5-spoke aluminum wheels (coupe)	■	■	■
16-inch "starfish" aluminum wheels (sedan)	■	■	■
P205/70R15 all-season radial tires	■	■	■
P215/60R16 performance radial tires	-	■	■
Sport Luxury Package (P215/60R16 performance tires and leather-trimmed steering wheel and shifter)	-	■	■
Rube strips with wet-armor washers	■	■	■
Power sunroof with sliding glass panel	-	-	□

COMFORT AND CONVENIENCE			
SERIES		II	III (II) IV
Air conditioning with CFC-free refrigerant	■	■	■
Dual-zone automatic climate control system	-	-	■
Steering wheel touch controls	-	-	■
TILT/Wheel adjustable steering column	■	■	■
Crucis control	■	■	■
Power windows with driver's auto-down	■	■	■
Analog gauge cluster with tachometer	■	■	■
Center console with storage armrest and cupholders	■	■	■
Lighting package (includes courtesy, glove box, underhood and trunk lamps)	■	■	■
Inside daytime mirror with dual reading lamps	■	■	■
Dual vanity mirrors (lighted on Series III and IV)	■	■	■
Headlamp and turn signal reminder chimes	■	■	■
Power trunk lock release	-	■	■

AUDIO SYSTEMS

Delco ETR AM/FM stereo with cassette player, automatic tone control, seek/scan and digital clock	■	■	■
Delco ETR AM/FM stereo with CD player, automatic tone control, seek/scan and digital clock	-	□	□
Delco ETR AM/FM stereo with CD and cassette player, automatic tone control, seek/scan and digital clock	-	□	■
4-speaker extended-range sound system	■	■	■
6-speaker Dimensional Sound system	-	-	■
Power antenna	-	-	■

SEATING AND TRIM

Reclining contour front bucket seats	■	■	■
4-way manually adjustable driver's seat	■	■	■
6-way power driver's seat	-	-	□
SS45 divided bench front seat with dual recliners and center storage armrest with cupholder (includes column shifter)	-	-	□
Split-folding rear seat back	-	-	■
Cloth interior trim	-	-	■
Leather-trimmed seating areas	-	-	■
Front and rear carpeted floor mats	■	■	■

■ Standard □ Optional - Not available
 *Not available with divided bench front seat.
 †Not available on coupe.

Color Combinations

EXTERIOR COLORS	INTERIOR CLOTH AND LEATHER* COLORS			
	GRAPHITE	BLUE**	DARK RED**	MEDIUM BEIGE
Bright White (16)	■	■	■	■
Medium Blue Metallic (30)	■	■	■	■
Dark Teal Metallic (35)	■	■	■	■
Black (41)	■	■	■	■
Medium Green Metallic (42)	■	■	■	■
Medium Green Gray Metallic (47)	■	■	■	■
Medium Beige Metallic (49)	■	■	■	■
Bright Red (81)	■	■	■	■
Cranje Red Metallic (96)	■	■	■	■

*Leather trim standard and available on Series IV only. **Available in cloth trim only.



Bright White Medium Blue Metallic Dark Teal Metallic Black Medium Green Metallic



Medium Green Gray Metallic Medium Beige Metallic Bright Red Cranje Red Metallic

The paint color samples shown above may vary slightly from actual vehicle color due to the printing process.

Cutlass Supreme Specifications

EXTERIOR DIMENSIONS			EPA ESTIMATED FUEL ECONOMY	
BODY STYLE	COUPE	SEDAN		
Wheelbase (in)	107.5	107.5	3100 SFI V6 (mpg, city/hwy)	20/29
Length (in)	193.9	193.7	3.4-liter DOHC V6 (mpg, city/hwy)	17/26
Width (in)	71.0	71.0		
Height (in)	53.3	54.8		
Curb weight (lb)	3283	3388		
Tread width, front/rear (in)	59.5/58.0	59.5/58.0		
Turning circle (ft., curb-to-curb)	37.5 ¹	37.5 ¹		

INTERIOR DIMENSIONS		
Headroom, front/rear (in)	51.3/57.0	58.7/58.3
Laproom, front/rear (in)	42.3/34.8	42.4/36.2
Shoulder room, front/rear (in)	57.6/57.2	57.4/56.6

CAPACITIES	
Seating capacity (passengers)	5 ²
Trunk volume (cu ft)	15.5
Fuel capacity (gal)	17.1

POWER TEAMS		
3100 SFI V6	3.4-LITER DOHC V6	
Displacement	3.1 liter (191 cu in)	3.4 liter (207 cu in)
Horsepower	160 @ 5200 rpm	216 @ 5200 rpm
Torque (lb-ft)	185 @ 4000 rpm	220 @ 4000 rpm

Sequential port fuel injection
 Transmission 4-speed electronic-shift automatic
 †800-LOr with 15-watt wheels
 *85+ passengers with available divided bench front seat.



OWNER AFTERCARE

IN ADDITION TO OUR

3-YEAR/36,000-MILE

(WHICHEVER COMES FIRST)

BUMPER-TO-BUMPER LIMITED

WARRANTY, WE ALSO OFFER

COURTESY TRANSPORTATION,

FREE TRIP ROUTING AND

24-HOUR ROADSIDE

ASSISTANCE BY CALLING

1-800-442-OLDS.

AT OLDSMOBILE, WE'RE

COMMITTED TO YOUR

SATISFACTION LONG AFTER

THE PURCHASE OF

YOUR CAR.



SAFETY

CUTLASS SUPREME'S SAFETY

ENGINEERING GOES BEYOND

COLLISION AVOIDANCE

AND OCCUPANT PROTECTION.

IT ALSO INCLUDES ITEMS

DESIGNED FOR YOUR

PERSONAL SAFETY AND

SECURITY, SUCH AS THE

PASS-KEY THEFT-DETERRENT

SYSTEM, AUTOMATIC

PROGRAMMABLE POWER

DOOR LOCKS AND

ILLUMINATED ENTRY.

A Word about Oldsmobile

THE GM CARD

Every time you use the no-annual-fee GM MasterCardSM, GM will credit 5% of your purchase toward buying or leasing a new Oldsmobile. It could mean saving hundreds, even thousands, of dollars. Call 1-800-8GM-CARD for more information, including annual limits and restrictions.

ACCELERATED EARNING NETWORK

Visit participating GM retailers for up to 10% in GM Card earnings on eligible parts and service transactions. Call 1-800-947-4000 for more information.

SMARTLEASE BY GMAC

SmartLease lets qualified customers pay for the portion of the vehicle they use, rather than paying for the entire vehicle as you would with traditional financing. You'll also enjoy lower up-front costs and lower monthly payments. Plus, you'll be able to drive a new vehicle more often or drive a higher-priced model. Ask your Oldsmobile retailer for more information.

FOR OCCUPANT PROTECTION

- Driver and right front passenger Supplemental Inflatable Restraints
- Manual lap/shoulder safety belts, driver and right front passenger • Manual lap/shoulder safety belts, outboard rear-seat positions • Manual lap safety belt, center seat position • Safety belt use reminder system • Front-folding seat back lock, inertia-tensional (coupe) • Energy-absorbing steering column
- Energy-absorbing instrument panel • Laminated windshield glass, urethane bonded • Tempered safety glass, side and rear windows • Interlocking door latches • Side door beams • Passenger-guard inside door lock handles • Safety armrest • Head restraint • Head restraint, outer and middle-rear seats • Inside daytime rearview mirror • Outside rearview mirrors • Brake system with dual master cylinder plus warning light • Anti-lock brakes • Starter safety switch
- Dual-action hood latch (front opening) • Low-glare finish (inside windshield moldings, wiper arms and blades) • Safety road wheel rim • Tires with built-in tread wear indicators • Illuminated brake and defroster controls • Brake/transmission shift interlock • Audible disc brake lining wear indicators

FOR CRASH AVOIDANCE

- Side marker lamps and reflectors • Parking lamps • 4-way hazard warning flashers • Backup lamps • Center high-mounted stoplamp • Directional signal control • Windshield wipers and multi-speed wipers • Inside daytime rearview mirror • Outside rearview mirrors • Brake system with dual master cylinder plus warning light • Anti-lock brakes • Starter safety switch
- Dual-action hood latch (front opening) • Low-glare finish (inside windshield moldings, wiper arms and blades) • Safety road wheel rim • Tires with built-in tread wear indicators • Illuminated brake and defroster controls • Brake/transmission shift interlock • Audible disc brake lining wear indicators

FOR THEFT DETERRENCE

- PASS-Key vehicle security system • Theft-deterrent steering column lock
- Theft-deterrent key locking system • Ignition key removal audible reminder • Remote inside hood release • Visible vehicle identification number • Laser-etched VIN plate

The 1996
OLDSMOBILES



Aurora



Cirra Sedan



Ninety Eight



Cirra Wagon



LSS



Achieva Sedan



Eighty Eight



Achieva Coupe



Cutlass Supreme Sedan



Silhouette



Cutlass Supreme Coupe



Bravada



© 1995 GM


Oldsmobile
Official Sponsor of the
1996 U.S. Olympic Team