



PONTIAC

1994. WE ARE DRIVING EXCITEMENT.



PONTIAC. What's inside for 1994?

Bold style. Innovative design. Powerful engineering. And lots of driving excitement. You'll find it all in this year's catalog. Whether this is your first trip here, or a return one, welcome to Pontiac.

If your automotive tastes run along winding roads, and if you appreciate innovation, agility and power, Pontiac has a vehicle for you. Our goal is to present you with products that merit consideration because of their outstanding performance, safety features and value.

But there's more to Pontiac than excellent automotive merchandise – there are the comprehensive after-sale services of Pontiac Cares, our way of demonstrating our ongoing dedication to complete customer satisfaction. People who have experienced Pontiac Cares have told us how well it has worked for them, and as you turn the page, they can tell you too.

Enjoy your time here. And remember...if you want driving excitement... you've come to the right place.

The Ownership Experience

4

Firebird

6

Grand Am

20

Bonneville

40

Bonneville SSE

50

Grand Prix

60

Sunbird

74

Trans Sport

84

Safety

96



Pontiac supports World Cup Soccer and the active lifestyle of our customers.

Protection from Murphy's Law.



Murphy's Law states that if anything can go wrong, it will. Have you ever had "one of those days"? You lock your keys in the car, run out of gas, get a flat tire, have to take your car in for warranty service and are without a ride to work? Pontiac hopes not, but just in case...Pontiac is at your service.

No matter which Pontiac you choose...no matter whether you buy or lease...standard on every 1994 Pontiac are the comprehensive services provided by Pontiac CARES:

3-year/36,000-mile no-deductible limited warranty

Toll-free 24-hour emergency Roadside Assistance that provides

- Free lock-out assistance
- Free dead-battery assistance
- Free out-of-fuel assistance
- Free flat-tire change
- Free towing for warranty repairs

Courtesy Transportation, that provides

- One-way shuttle to work, home or school for same-day repairs
- A loaner, rental car or transportation reimbursement of up to \$30 per day for multiple-day warranty repairs

The many services of the Customer Assistance Center

Protection on the road.

Each of these services does its part to help foil Murphy's Law.

If you're locked out of your

Pontiac, call 1-800-ROADSIDE, and help will be on the way. We'll get someone out to where you are. That includes changing a tire or jump-starting a dead battery. Or, if you're comfortable making minor repairs yourself, our technically trained advisors will help you right over the phone, with easy repairs such as changing a fuse. Hands-on assistance is just a phone call away. Pontiac's Roadside Assistance Center provides toll-free 24-hour access to emergency road service in every state, including Alaska and Hawaii.

Protection during service.

Pontiac even provides no-cost transportation any time you need to



bring your vehicle in to the dealership for warranty work.

If the repair requires multiple days, Pontiac provides a loaner vehicle or reimburses you for a rental (up to \$30 per day). If the vehicle's warranty service can be completed in one day, a one-way shuttle will get you where you need to be - up to ten miles from the dealership.



Protection through warranty.

Every new Pontiac is backed by an extensive no-deductible limited warranty for 3 years or 36,000 miles, whichever comes first. Rust-through corrosion protection equals 6 years or 100,000 miles, while Federal Emission Control Systems receive 5-year or 50,000-mile coverage. See your dealer for terms of these limited warranties.



Pontiac CARES helps protect you from Murphy's Law. Here's proof:

Sometimes, the help offered by Pontiac CARES is simple:

"Thanks for your help on Sunday morning (I locked my keys in the car)."

GREGORY JOHNSON, JAMESVILLE, WI

Other times, the help gets a bit more involved, especially when you're far from home:

"On the way home from a 550-mile trip, we picked up a piece of metal in our tire - it immediately went flat. Then we realized we didn't have the wheel locking kit. I called Roadside, and the rep contacted a dealer in the area and a person came out to us on the highway, temporarily fixed the tire, and followed us back to the dealer."

PAM & BOGER NOGAL, ELMONTE, IL

Pontiac CARES works to give you peace of mind:

"I didn't realize until long after, this (problem) wasn't bad at all! Much of the reason for this was the friendly, calm and understanding voice on the other end of that phone."

KIMBERLY IDOON, JANSNETT, PA

We work on your schedule:

"They (Roadside Assistance) were able to coordinate the arrival of the

tow truck with my arrival to the vehicle, thereby avoiding a lot of unnecessary waiting time. Thanks for providing this excellent service."

LARRY EYBCKER, ROCHESTER HILLS, MI

And when you seem like you're all alone:

"I felt helpless. Due to the 800 number, I convinced the shop to allow me to use their phone (the toll-free number is great!). Within 45 minutes from (when) trouble (began, I was on my way)...on a Sunday morning...in rural Pennsylvania. The incredible response time speaks for (itself)."

THOMAS MAXWELL, RANDOLPH, NJ

We can even help when you're in Milwaukee and your keys are in Toronto:

"I made the call to Roadside and had a new set of keys and was driving my associates home within 50 minutes from the time our plane landed."

HAIRTY PLUMMER, ROYAL DAM, WI

But whatever service Pontiac CARES provides to you, what's most important is that we really do care:

"Last night, the representative from customer assistance called me to make sure I made it home and was completely satisfied."

FLORENCE DOUGHERTY, AKRON, OH



Pontiac CARES worked for these people and it will work for you. It's peace of mind that's there for you, 24 hours a day, 7 days a week, 365 days a year.



FIREBIRD





Standard equipment on every Firebird includes:

Driver and passenger airbags

Four-wheel anti-lock brakes

A 3.4 liter V6 engine

BSS-Key II theft-deterrent system

Safety-cage construction

The services of Pontiac Cares

Shown, Firebird in Bright White with 16" cast aluminum wheels.

Preceding pages, Trans Am GT in Bright Red with 16" Sport cast aluminum wheels.

How sports cars will be judged from now on.

*Y*ou are looking at a new standard in sports cars. The 1994 Pontiac Firebird brings advanced safety and engineering technology to a car that is at once exciting and affordable.

With a windshield angled at a steep 68° and concealed headlamps behind an aerodynamic nose, this powerful shape cheats the wind in every encounter.

Performance is provided by a sequentially fuel-injected 3.4 liter V6. This specially developed six-cylinder engine smoothly produces 160 horsepower and a full 200 ft-lbs of torque.

Standard is a 5-speed manual transmission, or you can choose an available 4-speed automatic overdrive. You can even feel confident and secure when the rain and snow fly, thanks to standard four-wheel anti-lock brakes and 2nd-gear start, standard on the automatic to enhance traction.

Inside, complete controls are within easy reach and analog gauges are in clear view. It is a driver's environment supplemented by driver and passenger airbags*, a Delco AM/FM stereo cassette and convenient fold-down rear seatback.

*Always wear safety belts, even with airbags.





Standard equipment on every Firebird Formula includes:

Driver and passenger airbags

Four-wheel anti-lock disc brakes

A 275-horsepower, 5.7 liter SFI V8 engine

6-speed manual transmission

Safety-cage construction

P235/55R16 Goodyear Eagle GA touring tires

Shown, Formula in Black with Bright Silver 16" Sport cast aluminum wheels with available P245/50ZR16 Goodyear Eagle GS-C tires.



A new formula for safety and performance.

Why should an exciting new sports car be? Definitely fast and sporty. Good looking and great around curves. Responsible...responsible?

In these safety-conscious times, the only way to offer a 275-horsepower, 5.7 liter SFI V8 is in a car like Formula—a new sports car with full "sport" and a whole lot more, such as driver and passenger airbags* and four-wheel anti-lock disc brakes.

But these are only the start. Take the transmissions: The standard is a 6-speed manual. Or choose the available 4-speed automatic with "Normal" and "Performance" driver-selectable shift calibrations and the option of Traction Control (available mid-year).

You'll also find Formula's cast aluminum wheels connected to four-wheel disc brakes. The brakes are modulated by a sophisticated anti-

lock braking system, giving you extra steering control when you're braking hard on slippery roads.

Responsible engineering carries through to the chassis. That's where de Carbon™ monotube shock absorbers, a short/long arm front suspension (SLA), low-profile P235/55R16 high-performance radials, and a power rack-and-pinion steering system give drivers the control they need over a

wide variety of roads and conditions.

Lastly, Formula's body continues this practical tact by being built from material that will stand up to the rigors of performance driving. Two-sided galvanized steel (highly resistant to corrosion) and generous amounts of rustproof composites are used for the fenders, doors, hood and hatch. The front fenders even spring back from minor impacts.

*Always wear safety belts, even with airbags.



The power to change minds.

The mature approach to power lies in proper management, and that's what Trans Am and Trans Am GT are all about.

Trans Am's 5.7 liter SFI V8 can exercise any or all of its 275 horsepower and 325 ft.-lbs of torque. Managing this power is easy, thanks to Trans Am's four-wheel anti-lock disc brakes and, available mid-year, Traction Control.

Power is harnessed by either the standard 6-speed manual (a close-ratio 4-speed plus 2 overdrive gears) or available electronically controlled 4-speed

automatic overdrive. Additional technology includes a computer-designed chassis with a short/long arm front suspension (SLA), rack-and-pinion power steering, and a suspension tuned for performance with de Carbon shocks.

Trans Am hits the street with a sleek shape and uniquely contoured nose. To this, Trans Am GT adds body-side moldings, a special GT spoiler, and wider, higher-performance P245/50ZR16 Goodyear Eagle GS-C tires. In either configuration, Trans Am is a sports car with the power to move you.

Standard equipment on every Trans Am includes:

Driver and passenger airbags

Four-wheel anti-lock disc brakes

A 275-horsepower, 5.7 liter SFI V8 engine

Speed-rated, high-performance Goodyear Eagle tires

Air conditioning, power door locks, windows and mirrors

Above, Trans Am GT in Bright Red with Bright Silver 16" Sport cast aluminum wheels.

At left, Trans Am in Bright Red with Bright Silver 16" Sport cast aluminum wheels.

An inside look at technology.

Get behind the wheel of Firebird, Formula, Trans Am and Trans Am GT and there's no question that their intent is serious driving excitement.

All controls are within easy reach. Instruments, all analog, clearly communicate vital vehicle information.

Driver and passenger airbags are standard. In addition to standards found on all models, Trans Am GT includes articulating bucket seats, premium 10-speaker sound system with cassette and graphic equalizer, plus remote keyless entry.



Standard equipment on every Firebird interior includes:

Driver and passenger airbags

New Delco 2001 Series sound system

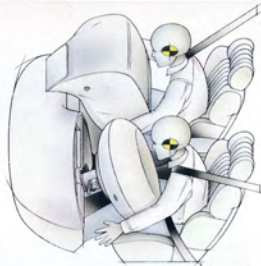
Rotary switches for the lights and air conditioning

At left, Trans Am GT's interior with standard steering wheel-mounted radio controls and available leather seating surfaces.

Top left, Trans Am's instrument panel.

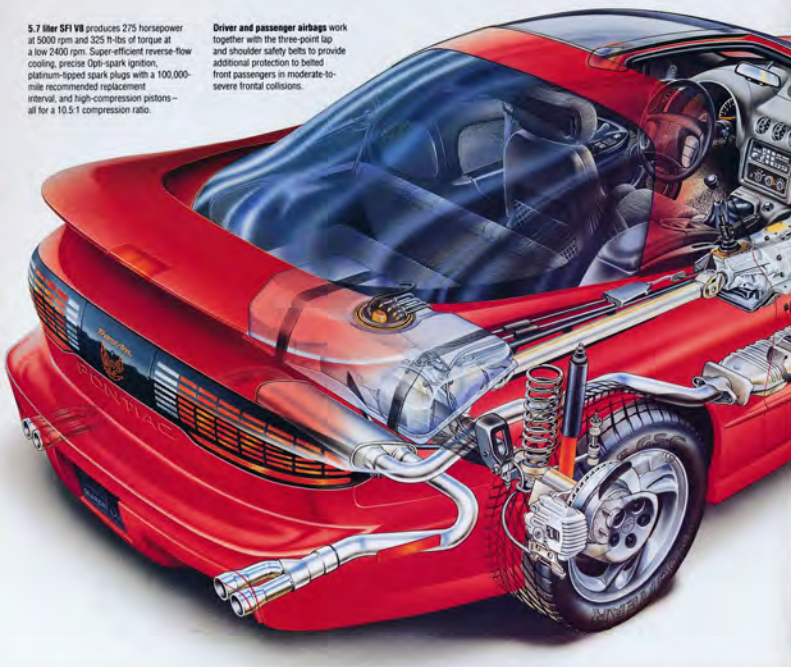
Above, Gray Metrix cloth bucket seats are standard on Firebird.

At right, in moderate-to-severe front-end collisions, Firebird's standard driver and passenger airbags inflate and deflate within a tenth of a second. For best protection, always wear safety belts, even with airbags.



5.7 liter SFI V8 produces 275 horsepower at 5000 rpm and 325 ft-lbs of torque at a low 2400 rpm. Super-efficient reverse-flow cooling, precise Opti-spark ignition, platinum-tipped spark plugs with a 100,000-mile recommended replacement interval, and high-compression pistons—all for a 10.5:1 compression ratio.

Driver and passenger airbags work together with the three-point lap and shoulder safety belts to provide additional protection to belted front passengers in moderate-to-severe frontal collisions.



Tom Quinlan

Borg-Warner 6-speed manual transmission is a quiet and smooth-shifting gearbox that provides six forward speeds to maximize performance.

Short/Long Arm (SLA) front suspension delivers a smooth ride and stable handling.

Safety-cage construction forms a protective capsule around the passenger compartment.

5-mph bumpers are made from a light yet high-strength structural RIM composite material.

Four-wheel anti-lock disc brakes are controlled by the advanced, fully electronic ABS-VI system.

Technology for the driven.

Technology should make cars easier, safer and more fun to drive...and that's what Firebird's equipment does.

Four-wheel anti-lock brakes are one obvious feature that sets every Firebird apart from the competition. With the speed and precision that only a microprocessor can deliver, Firebird's braking system automatically helps you avoid skidding by mechanically "pumping" the brakes at up to 13

times per second. The result is an extra margin of steering and braking control when you need it most: on slick or slippery roads or in any number of emergency situations where hard braking is likely to cause a skid.

Likewise, fully electronic Traction Control is available mid-year on Formulas, Trans Ams and Trans Am GTs equipped with the available 4-speed automatic transmission. This

integrated system uses the rear brakes and engine management system to prevent rear-wheel spin while accelerating on low traction or slippery road surfaces, a feature that is especially helpful on snow and ice.

Additionally, the V8/automatic transmission combination offers its drivers another sophisticated benefit of technology — driver-selectable shift programming with two modes ("Normal" and "Performance") that feel different because they tune transmission shift points to your driving style.

While the "Normal" shift mode programs the powertrain management

computer to change up through the gears as quickly and efficiently as possible, the "Performance" mode holds the transmission in each gear longer for firmer shifts that take advantage of the engine's wide rpm range.

ABS and Traction Control help harness the impressive power of Formula, Trans Am and Trans Am GT. All three provide a powerful 5.7 liter SFI V8. It is an advanced powerplant backed by an electronically controlled 4-speed automatic or a standard Borg-Warner 6-speed manual transmission.

Firebird's 3.4 liter V6 provides generous power for sporty driving,

The V6 sends its power to the rear wheels via a 5-speed manual or electronically controlled 4-speed automatic that gives every driver the Firebird traction provided by the 2nd-gear start reduces the amount of torque sent to the rear wheels and helps you main-

tain control while you accelerate on snow-covered or wet roads.

Regardless of powertrain, a coordinated suspension gives every Firebird on-road composure, thanks to an SLA independent front suspension and sophisticated de Carbon monobute shock absorbers.



Standard safety features on every Firebird include:

Driver and passenger airbags

Four-wheel anti-lock brakes

Safety-cage construction

Brake/transmission shift interlock for automatic transmissions

Below, Firebird's 3.4 liter V6.

At bottom, driver-selectable shift programming, included with automatic transmission.

	3.4 liter V6	5.7 liter V8
Firebird	S	—
Formula	—	S
Trans Am	—	S
Horsepower	160 @ 4600 rpm	275 @ 5000 rpm
Torque (ft-lbs)	200 @ 3600 rpm	325 @ 2400 rpm
5-speed Manual	S	—
6-speed Manual	—	S
4-speed Automatic	A	A

S = Standard A = Available — = Not available

Key Features at a Glance Shown in Red



Pontiac Cares

Pontiac backs every 1994 Firebird with the following services. See pages 4-5 of this catalog for additional details.

	Firebird	Formula	Trans Am	Trans Am GT
Extensive 3-year/36,000-mile no-deductible limited warranty	S	S	S	S
24-hour Roadside Assistance that provides in an emergency:				
Free lock-out assistance	S	S	S	S
Free dead-battery assistance	S	S	S	S
Free out-of-fuel assistance	S	S	S	S
Free flat-tire change	S	S	S	S
Courtesy Transportation	S	S	S	S

Exterior Features

	Firebird	Formula	Trans Am	Trans Am GT
Antenna, fixed mast (black)	S	S	S	S
Bumpers, soft fascia type	S	S	S	S
Composite doors, fenders, fascias, roof, rear deck lid and spoiler	S	S	S	S
Glass, Solar-Ray tinted	S	S	S	S
Hatch roof: Removable with locking package	A	A	A	A
Sunshade, removable, for hatch roof	A	A	A	A
Headlamps: Concealed quartz halogen (electrically operated)	S	S	S	S
Fog lamps	-	-	S	S
Mirrors: Sport, LH remote, RH manual	S	S	-	-
Sport, LH and RH power remote with blue glass	A	A	S	S
Moldings, bodyside, body color	A	A	A	S
Spoiler, rear deck lid (Trans Am GT features specific design)	S	S	S	S
Tires (steel-belted radial): P215/60R16 touring	S	-	-	-
P235/55R16 touring	A	S	S	-
P245/50ZR16 high performance	-	A	-	S
Compact spare, high pressure (T125/70D15) 15" x 4" steel wheel	S	S	S	S



A B C

Wheels:	Firebird	Formula	Trans Am	Trans Am GT
A 16" x 7-1/2" cast aluminum	S	-	-	-
B Bright Silver 16" x 8" Sport cast aluminum	-	S	S	S
C Bright White 16" x 8" Sport cast aluminum	-	A	A	A
Windshield wipers, controlled-cycle	S	S	S	S

Interior Features

	Firebird	Formula	Trans Am	Trans Am GT
Acoustical insulation, extensive	S	S	S	S
Airbag/safety belts, Driver's and passenger side	S	S	S	S
Safety belts, 3-point active	S	S	S	S
Air conditioning	A	S	S	S
Console, full-length front adjoining to instrument panel	S	S	S	S
Cruise control	A	A	S	S
Defogger: Electric rear window	A	A	A	S
Side window	S	S	S	S
Door locks, power, automatic	A	A	S	S
Fabric: Metrix cloth	S	S	S	S
Prado leather seating areas with perforated inserts	A	A	A	A

Interior Features (continued)



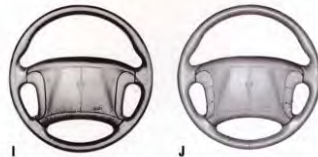
	Firebird	Formula	Trans Am	Trans Am GT
D Instrumentation:				
D Analog speedometer, odometer, tachometer, coolant temperature, oil pressure indicator, voltmeter and trip odometer (150 mph calibrations standard Trans Am GT, available Formula)	S	S	S	S
Keyless entry system, remote	A	A	A	S
Lights, ashtray, dome and glove box	S	S	S	S
Luggage compartment trim, fully carpeted	S	S	S	S
Mats: Carpeted front	S	S	S	S
Rear	A	A	A	S
Mirrors: Day/night rearview with reading lamps	S	S	S	S
Visor vanity, RH and LH covered	S	S	S	S
Power windows with driver's "express-down" feature	A	A	S	S
Hatch release, remote	S	S	S	S
Radios:				
E Delco 2001 Series ETR AM/FM stereo with auto-reverse cassette, search and replay, clock and Delco theft lock (UN6)	S	S	S	-
F Delco 2001 Series ETR AM/FM stereo with compact disc player. Includes clock, touch control, seek up/down, search and replay and Delco theft lock (U1C)	A	A	A	-
G Delco 2001 Series ETR AM/FM stereo with auto-reverse cassette and 7-band graphic equalizer. Includes clock, touch control, seek up/down, search and replay, leather-wrapped steering wheel with radio controls. Leather Appointment Group and Delco theft lock. Hi-Performance 10-speaker system includes 6-1/2" HSS speakers and tweeters in doors; 6-1/2" subwoofers in sail panels; subwoofer amplifier as well as 4" speakers and tweeters in rear quarter panels. Requires power windows and door locks (UT6)	A	A	A	S
H Delco 2001 Series ETR AM/FM stereo with compact disc player and 7-band graphic equalizer. Includes clock, touch control, seek up/down, search and replay, leather-wrapped steering wheel with radio controls. Leather Appointment Group and Delco theft lock. Hi-Performance 10-speaker system includes 6-1/2" HSS speakers and tweeters in doors; 6-1/2" subwoofers in sail panels; subwoofer amplifier as well as 4" speakers and tweeters in rear quarter panels. Requires power windows and door locks (UP3)	A	A	A	A



G H

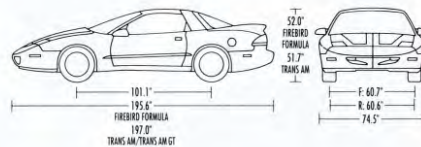
Interior Features (continued)

	Firebird	Formula	Trans Am	Trans Am GT
Safety belts, lap and shoulder, driver and front passenger	S	S	S	S
Rear-seat lap and shoulder; all outboard positions	S	S	S	S
Seats: Reclining front bucket, folding rear	S	S	S	S
2-way manual front, driver/passenger	S	S	S	-
4-way manual front, driver/2-way manual front, passenger	A	-	-	S
6-way power front, driver	A	A	A	-



Steering wheels:	Firebird	Formula	Trans Am	Trans Am GT
I Four-spoke	S	S	S	S
J Leather-wrapped (includes leather-wrapped shift knob and parking brake handle)	A	A	A	S
Tilt-Wheel adjustable steering column	S	S	S	S
Theft-deterrent system, PASS-Key II	S	S	S	S

Exterior Dimensions



Option Groups

Some available options may require additional equipment. See your dealer for details.

	Firebird		Formula			Trans Am		Trans Am GT
RPO	1SB	1SC	1SA*	1SB	1SC	1SA	1SA	
C60 Air conditioning	■	■	S	S	S	S	S	
B35 Rear floor mats	■	■	■	■	■	■	■	S
B84 Bodyside moldings	■	■	■	■	■	■	■	S
A31 Power windows	■	■	■	■	■	S	S	
AU3 Power door locks	■	■	■	■	■	S	S	
AH3 4-way manual seat adjuster, driver's side	■	■	-	-	-	-	-	S
K34 Cruise control	■	■	■	■	■	S	S	
DG7 Mirrors, Sport LH and RH power, blue tint	■	■	■	■	■	S	S	
AU0 Remote keyless entry with illuminated entry	■	■	■	■	■	■	■	S
UT6 Cassette with graphic equalizer and steering wheel controls	■	■	■	■	■	■	■	S

■ = Included in option group S = Standard - = Not available * = Must order either C60 or C41 with this group

Exterior Colors

See dealer for model/color availability.



Mechanical

	Firebird	Formula	Trans Am	Trans Am GT
Battery, Delco Freedom II	S	S	S	S
Brakes: Anti-lock braking system (ABS), 4-wheel	S	S	S	S
Power front disc/rear drum	S	-	-	-
Power 4-wheel disc	-	S	S	S
Brake/transmission shift interlock safety feature (with automatic transmission)	S	S	S	S
California/New York emissions requirements	A	A	A	A
Engines: 3.4 liter V6 with sequential-port fuel injection	S	-	-	-
5.7 liter V8 with sequential-port fuel injection	-	S	S	S
Exhaust system, stainless steel	S	S	S	S
Extensive anti-corrosion protection	S	S	S	S
GM Computer Command Control	S	S	S	S
Low oil level monitor and warning	S	S	S	S
Rear axle, performance ratio, includes 3.23 axle ratio, engine oil cooler (required with air conditioning) and P245/50ZR16 tires (with automatic transmission only)	-	A	-	S
Rear-wheel drive	S	S	S	S
Steering, power rack-and-pinion	S	S	S	S
Suspension: Short/long arm front, torque arm/track bar rear	S	S	S	S
Ride and handling	S	-	-	-
Performance ride and handling	-	S	S	S
Traction Control (requires V8 and automatic transmission)	-	A	A	A
Transmissions: 5-speed manual	S	-	-	-
6-speed manual	-	S	S	S
4-speed automatic includes driver transmission select switch. V8 models feature "normal" and "performance," V6 features "normal" and 2nd-gear-start mode	A	A	A	A

S = Standard A = Available - = Not available

Interior Dimensions

Headroom, f/r:	37.2/35.3"
Legroom, f/r:	43.0/28.9"
Shoulder room, f/r:	57.4/55.8"
Hip room, f/r:	52.8/44.4"
Cargo w/rear seat up:	12.9 cu. ft.
Cargo w/rear seat down:	33.7 cu. ft.

Specifications

Engine/drive:	Front engine, rear-wheel drive
Curb weight:	3234 to 3544 lbs.
Fuel capacity:	15.5 gal.

GRAND AM





Standard equipment on Grand Am SE includes:

Driver airbag

Four-wheel anti-lock brakes

2.3 liter Quad OHC engine

Illuminated entry

Automatic power door locks

The services of Pontiac Cares

Shown, Grand Am SE Coupe in Bright Aqua Metallic with available 16" SE-specific cast aluminum wheels.

Preceding pages, Grand Am GT Coupe in Bright White with 16"GT-specific body-color aluminum wheels.

Thousands of good reasons to own a Grand Am, plus two great ones:

Want a good reason to buy or lease a new Grand Am SE? Just ask any of the customers who already made the smart choice to select a 1994 Grand Am – one of America's most popular compact cars for the last two years running.

Chances are, the first thing they'd tell you is that Grand Am has a driver

airbag and four-wheel anti-lock brakes standard, and that most of the competition doesn't. These two features alone set Grand Am apart, especially in terms of safety and value.

They might also tell you about how they like its looks, and mention its sleek body, highlighted by standard fog lamps. While the design is

eye-catching, it cheats the wind to help deliver a quiet, stable ride.

Still others will praise the fun-to-drive nature of its responsive 2.3 Quad OHC four-cylinder engine or the power of Grand Am's available new 3.1 liter 3100 SFI V6. Both engines are fuel-injected and feature fully electronic ignitions with no

moving parts – a plus for reliability and long-term durability.

Of course, there's a lot more to the Grand Am story, and a lot more that Grand Am owners are talking about. That story continues on the next page. Read on. Then make up your own mind about why Grand Am is both the smart and fun choice for you.



Standard equipment on every Grand Am GT includes:

Driver airbag

Four-wheel anti-lock brakes

2.3 liter Dual Overhead Cam H.O. Quad 4 engine

GT-specific cast aluminum wheels

P205/55R 16 Eagle GT+4 tires

Lower body ground effects

Rear deck lid spoiler

Shown, Grand Am GT Coupe in Bright Red with 16" GT-specific cast aluminum wheels.

Fun to drive, smart to buy.

*I*t's hard to look at Grand Am GT and not want to drive it.

The reason? Start at ground level with the GT's special aluminum wheels and aggressive performance tires. Then move to the lower ground effects that wrap around the body. The perfect ending is at the GT's special taillamps and new rear spoiler.

Keeping true to the pledge made by its sporty looks, Grand Am GT takes to the road with dual overhead camshaft/16-valve technology and 170 horsepower provided by the standard High Output Quad 4 with a 5-speed

manual shifter. You can choose an available 4-speed automatic overdrive with either a four-cylinder DOHC Quad 4 or the new 3.1 liter 3100 SFI V6.

An equal to any of the engine/transmission combinations is the GT's standard four-wheel anti-lock braking system.

With the ability to pump brake-line pressure 15 times per second, Grand Am GT drivers have more control – especially during hard braking maneuvers on wet or slick surfaces – to drive around road debris or avoid potential accidents.



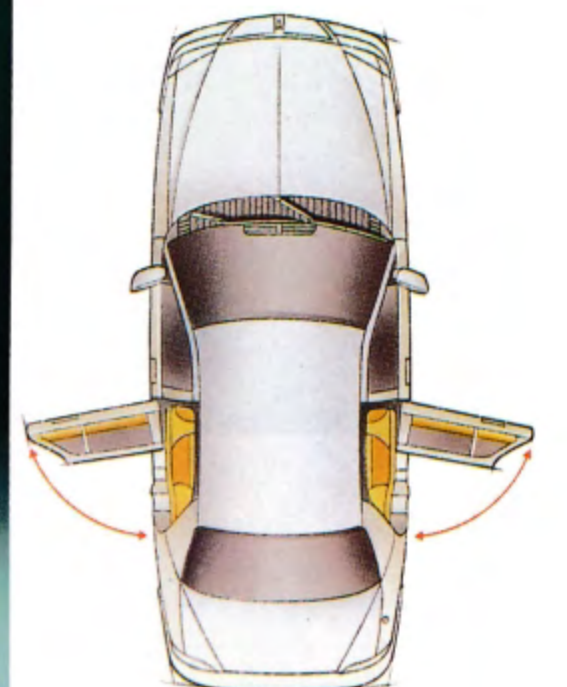


Standard equipment on every Grand Am SE Sedan includes:

- Driver airbag
- Four-wheel anti-lock brakes
- 3-across rear seating
- Automatic power door locks
- Rear-door child-security locks
- AM/FM stereo

Shown, Grand Am SE Sedan in Dark Green Metallic with available 16" cast aluminum wheels.

Below, Grand Am sedans have rear doors that open a full 80°, making getting in and out easier and more comfortable.



Sporting by nature. Comfortable by design.

From its inception, Grand Am has been known for delivering on a driving promise that puts the driver in control. Never before has this been more evident than in 1994.

With features like four-wheel anti-lock brakes, power rack-and-pinion steering, and a smooth handling suspension complete with all-season tires, it's hard not to feel in control.

Behind the Grand Am SE Sedan's airbag-equipped steering wheel is a cockpit worthy in every way of a true driver's car.

From the driver's seat, warm-red backlit gauges clearly present their information, with fingertip controls right at hand. These controls operate with a tactile feel and audible "click" that lets drivers know Grand Am is

obeying their every command – a comforting notion in any kind of driving environment.

Following through on making driving more comfortable, Grand Am automatically takes on some traditional driving exercises for you, like locking all the doors before leaving the driveway.

When Grand Am's available auto-

matic transmission is placed in Drive, or when a manual-equipped car moves forward faster than 8 mph, all four doors automatically lock. Then, when the ignition is turned off, the doors automatically unlock.

These are the kind of features that complement Grand Am's sporty side and make your automotive life more comfortable and secure.





A tough act to follow...especially for the competition.

If the competition had a wish list that would give it a car that compared to Grand Am GT Sedan, what would be on that list?

How about a fuel-injected, 2.3 liter DOHC High-Output Quad 4 engine that loves to run for its redline?

And then there's the 5-speed manual gearbox, special handling suspension, electronically controlled four-wheel anti-lock brakes, and performance tires.

That'll do for starters, but not for Grand Am. So Pontiac wraps the Grand Am GT Sedan with lower aero

body panels, a GT-only front air dam, and 16" aluminum wheels machine faced or finished in Bright White.

Available equipment includes a DOHC Quad 4 engine or the new 3.1 liter 3100 SFI V6 that can be matched to a 4-speed automatic transmission.

In addition to an overdrive top gear that reduces engine rpms at highway speeds, the automatic transmission includes a brake/transmission shift interlock – a device that prevents the transmission from being shifted out of Park unless the driver's foot is pressing firmly on the brake pedal.

Standard equipment on every Grand Am GT includes:

Driver airbag

Four-wheel anti-lock brakes

2.3 liter Dual Overhead Cam H.O. Quad 4 engine

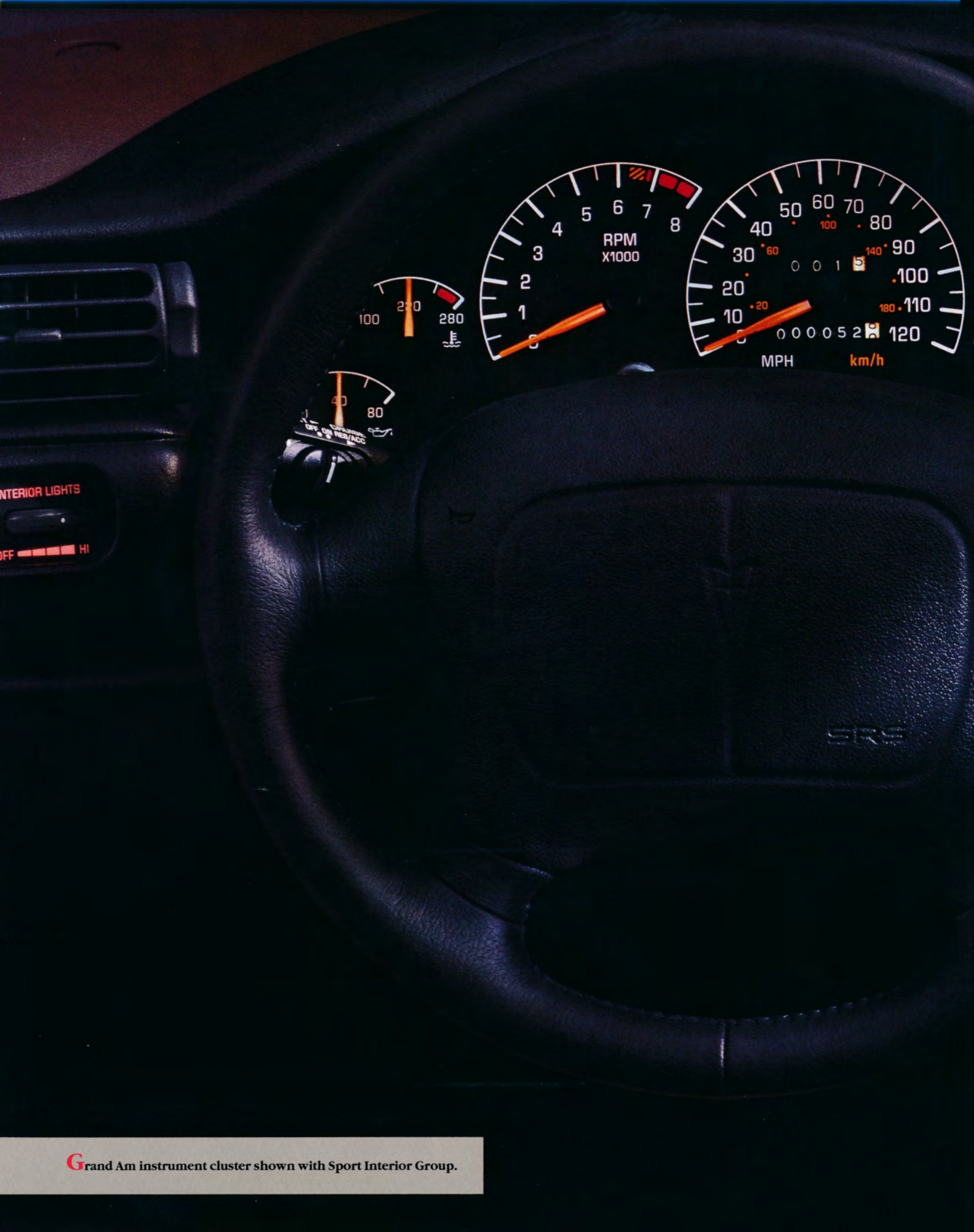
Automatic power door locks

Rear deck lid spoiler

Shown, Grand Am GT Sedan in Black with 16" GT-specific cast aluminum wheels.



Grand Am interior with Sport Interior Group shown in Beige leather.



Grand Am instrument cluster shown with Sport Interior Group.



Standard on every Grand Am is an interior equipped with:

Driver airbag

Illuminated entry

Easy-to-read gauges

Rear-seat safety-belt child comfort guides

Overhead console

Delco AM/FM stereo

At left, in moderate-to-severe front-end collisions, Grand Am's airbag inflates and deflates within a tenth of a second. For best protection, always wear safety belts, even with airbags.

At right, optional power-operated sunroof, available mid-year.

Below right, the convenience of dual glove boxes.

An interior design that simply makes sense.

Mandatory for any road car is an interior whose design shows an appreciation for safety. Grand Am's safety-first attitude includes a standard driver airbag, automatic power door locks, illuminated entry, and rear-door child-security locks on sedans.

special sizing and fingertip design of each control, help drivers operate frequently used features without looking. The logic of the interior's design is obvious when looking at the climate control system. It logically places the fan speed rotary knob nearest the dri-

ver because this is the control a driver adjusts most often.

Resourceful Storage

In addition to conveniently placed door pockets plus center and overhead consoles, there are two glove boxes: one on top for smaller items and a larger drawer below that accepts bigger items with ease.

Music to Your Ears

While Grand Am's interior is altogether functional, it also provides features that add pure enjoyment to driving. An electronically tuned Delco AM/FM stereo sound system is standard, or you can choose from high-powered AM/FM stereo cassette and compact disc sound systems that are available on all models.



Driver-oriented Interior

While Grand Am's interior is safety-oriented, it is also driver-oriented, with the necessary equipment wrapped in a cockpit environment. Seats provide firm support for hours of driving comfort. Seating surfaces include the standard Grid cloth, available Spectra cloth or available leather.

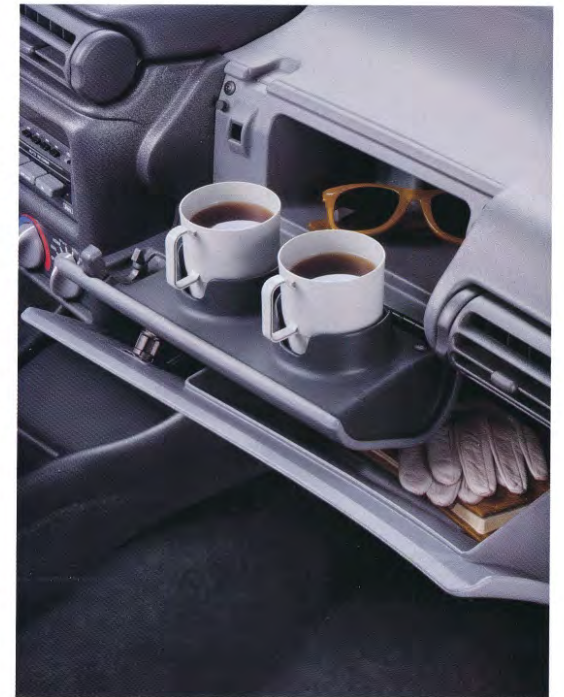
Easy-to-read Gauges

The driver's seat positions you in front of large analog gauges that are easy to see.

As for the gauges themselves, standard on SE models is a large speedometer flanked by gauges for fuel and temperature. The GT's instrument cluster adds a tachometer, voltmeter and oil pressure gauge.

Easy-access Controls

In keeping with the functional design of the gauges are the controls. Each individual component facilitates quick access and operates with reassuring precision. Tactile indents, the





Standard equipment on every Grand Am includes:

Driver airbag

Four-wheel anti-lock brakes

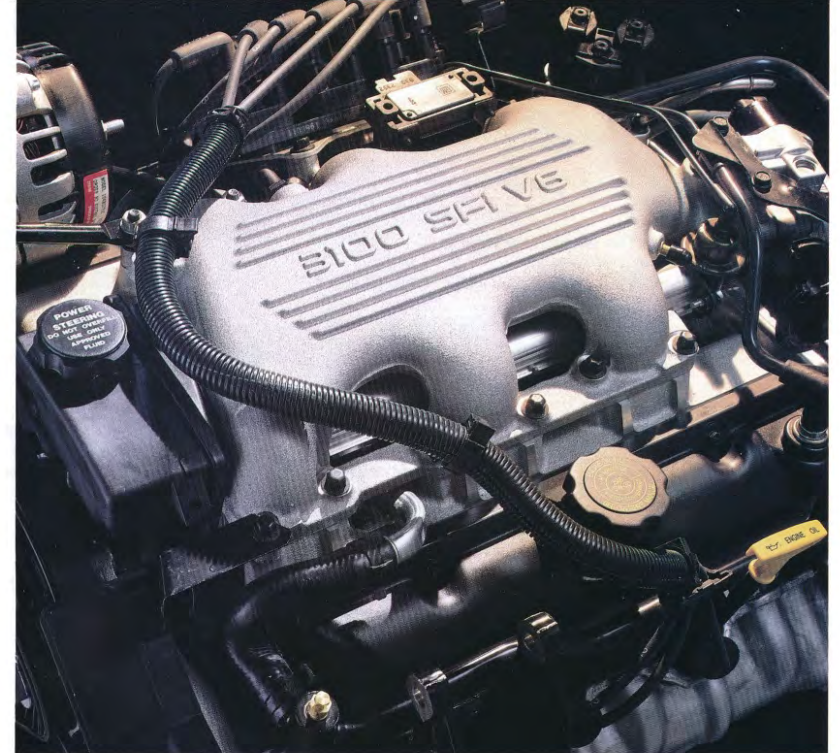
Power-assisted rack-and-pinion steering

Brake/transmission shift interlock

All-season radial tires

At left, the benefits of anti-lock brakes provide peace of mind and added control when unforeseen circumstances head your way.

At right, the new 3.1 liter 3100 SFI V6 with 4-speed automatic overdrive transmission, available on all models.



Equipped to handle life's little surprises.

It's always something: If it's not the athlete on the bike swerving out in front of you, it's the kid chasing the ball without checking traffic.

For those quick stops mandated by the unexpected road obstacle, there's Grand Am's sophisticated four-wheel anti-lock braking system (ABS). On dry pavement or wet, this system can increase the amount of steering control you have to help you avoid a potentially unpleasant situation when braking hard.

The system's operation is simple and reliable. When wheel skid is anticipated, the pressure in the brake line to the wheel or wheels that are likely to skid is pumped at up to 15 times per second. The benefit: Everyone can brake like an expert, even on slippery roads.

SE comes equipped with a fuel-

injected, 115-horsepower 2.3 liter Quad OHC overhead cam engine, 5-speed manual transmission and touring suspension.

Standard on GT models is a 170-horsepower High Output (H.O.) Quad 4. With dual overhead camshafts and four valves per cylinder, the H.O. Quad 4 is one of America's most powerful four-cylinder motors.

Supporting the GT's extra power is a special suspension that matches sport-tuned components with high-performance Goodyear Eagle GT+4

tires. The result is a combination that conquers corners with confident ease.

There are a variety of engine/transmission combinations for both SE and GT models. New for 1994 is the 3.1 liter 3100 SFI V6. It is quieter than any V6 previously offered in this generation of Grand Ams.

It's available only with a four-speed automatic transmission that features an overdrive top gear for highway cruising. See the chart below for availability and model, horsepower and torque specifications.

	2.3 OHC 5-speed Manual	2.3 OHC 3-speed Automatic	2.3 OHC 4-speed Automatic	H.O. Quad 4 5-speed Manual	DOHC Quad 4 4-speed Automatic	3.1 L V6 4-speed Automatic
SE	S	A	A	-	-	A
GT	-	-	-	S	A	A
Horsepower	115 @ 5200 rpm	115 @ 5200 rpm	115 @ 5200 rpm	170 @ 6200 rpm	155 @ 6000 rpm	155 @ 5200 rpm
Torque (ft-lbs)	140 @ 3200 rpm	140 @ 3200 rpm	140 @ 3200 rpm	150 @ 5200 rpm	150 @ 4800 rpm	185 @ 4000 rpm

S = Standard A = Available - = Not available

Key Features at a Glance Shown in Red



Pontiac Cares

Pontiac backs every 1994 Grand Am with the following services. See pages 4-5 of this catalog for additional details.

	SE Coupe	SE Sedan	GT Coupe	GT Sedan
Extensive 3-year/36,000-mile no-deductible limited warranty	S	S	S	S
24-hour Roadside Assistance that provides in an emergency:				
Free lock-out assistance	S	S	S	S
Free dead-battery assistance	S	S	S	S
Free out-of-fuel assistance	S	S	S	S
Free flat-tire change	S	S	S	S
Courtesy Transportation	S	S	S	S

Exterior Features

	SE Coupe	SE Sedan	GT Coupe	GT Sedan
Aero extensions	-	-	S	S
Antenna: Fixed mast	S	S	S	S
Bumpers, soft fascia type with integral rub strips	S	S	S	S
Glass, Soft-Ray tinted	S	S	S	S
Headlamps: Composite wraparound	S	S	S	S
Fog lamps	S	S	S	S
Mirrors: Sport, LH remote, RH manual	S	S	S	S
Sport, LH and RH power remote (included with 1SC option group only)	A	A	A	A
Moldings, body-side, wide body color	S	S	S	S
Spoiler, Rear deck lid	A	A	S	S
Delete	-	-	A	A
Tires (steel-belted radial): P185/75R14 blackwall (OFE)	S	S	-	-
P195/65R15 blackwall, touring (QPD) ⁽¹⁾	A	A	-	-
P205/55R16 blackwall, touring (QMS) ⁽¹⁾	A	A	-	-
P205/55R16 blackwall (QLG) ⁽¹⁾	-	-	S	S
Compact spare	S	S	S	S
Trunk, with low liftover design feature	S	S	S	S

GRAND AM

38



Wheels/Wheel Covers:

	SE Coupe	SE Sedan	GT Coupe	GT Sedan
A Custom bolt-on wheel covers, 14" (PC1)	S	S	-	-
B Crossface covers (15") with bolt-on feature (PG1)	A	A	-	-
C SE-16" machine-faced cast aluminum (QB4)	A	A	-	-
D SE-Rally, 16" machine-faced cast aluminum (PH7)	A	A	-	-
E GT-specific cast aluminum 16" (PG0)	-	-	S	S
Windshield wipers: "Wet-arm"	S	S	S	S
Controlled-cycle	A	A	S	S

Interior Features

	SE Coupe	SE Sedan	GT Coupe	GT Sedan
Acoustical insulation, extensive	S	S	S	S
Airbag/safety belts: Driver's side	S	S	S	S
Automatic safety belts, 3-point passive	S	S	S	S
Rear-seat lap and shoulder; all outboard positions	S	S	S	S
Rear-seat; child comfort guides all outboard positions	S	S	S	S
Air conditioning	A	A	S	S
Armrest, front seat, includes storage bin	S	S	S	S
Console, front floor with storage, coin holder and armrest	S	S	S	S
Cruise control	A	A	A	A

	SE Coupe	SE Sedan	GT Coupe	GT Sedan
Interior Features (continued)				
Deck lid release	S	S	S	S
Defogger, electric rear window	A	A	A	A
Door locks: Power, automatic	S	S	S	S
Child resistant rear	-	S	-	S
Fabric: Grid cloth interior	S	S	S	S
Spectra cloth (available with B20 Custom Trim)	A	A	A	A
Leather seating (available with B20 Custom Trim)	A	A	A	A



	SE Coupe	SE Sedan	GT Coupe	GT Sedan
Instrumentation:				
G Analog gauges with trip odometer	S	S	-	-
H Analog speedometer, odometer, tachometer, coolant temperature, oil pressure indicator, voltmeter and trip odometer [†]	A	A	S	S
Keyless entry system, remote (available with option group 1SC only)	A	A	A	A
Lights: Headlamp-on warning	S	S	S	S
Interior lamp group includes trunk lighting	S	S	S	S
Illuminated entry	S	S	S	S
Luggage compartment: Carpeted	S	S	S	S
"Valet" lock-out feature	S	S	S	S
Mats, carpeted front and rear floor	S	S	S	S
Mirrors: Day/night rearview	S	S	S	S
Visor vanity, RH and LH	S	S	S	S
Power windows with driver's "express-down" feature [†]	A	A	A	A
Radios:				
I Delco ETR AM/FM stereo with seek up/down and clock (UM7)	S	S	S	S
J Delco ETR AM/FM stereo with seek up/down and auto-reverse cassette (UM6)	A	A	A	A
K Delco ETR AM/FM stereo with seek up/down, auto-reverse cassette with search and replay features, graphic equalizer and clock (includes 6-speaker sound system UW6) (UX1) [†]	A	A	A	A
L Delco ETR AM/FM stereo with seek up/down, compact disc, graphic equalizer and digital clock (includes 6-speaker sound system UW6) (UP3)	A	A	A	A
6-speaker system (included only with radios UX1 and UP3)	A	A	A	A



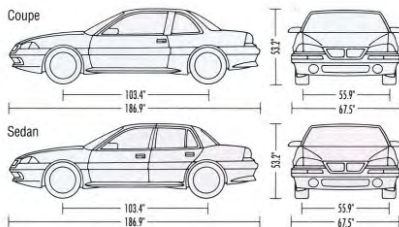
	SE Coupe	SE Sedan	GT Coupe	GT Sedan
Seats, front: 45/45 bucket seats, reclining	S	S	S	S
Easy-entry front passenger	S	-	S	-
Driver's power, 6-way (available with option group 1SC only)	A	A	A	A

	SE Coupe	SE Sedan	GT Coupe	GT Sedan
Interior Features (continued)				
Custom Trim (B20): Sport Interior Group (order by trim code) includes uplevel Spectra cloth, leather-wrapped steering wheel and shift knob, passenger assist grips, reading and courtesy lamps, visor extensions, uplevel seat design, split-folding rear seat, 4-way manual seat adjuster, manual driver lumbar adjustment, articulating headrests and rear-seat map pockets. [†]	A	A	A	A
Seats, rear: Three-passenger with integrated headrests	S	S	S	S
Split-folding (included with Sport Interior Group B20) [†]	A	A	A	A



	SE Coupe	SE Sedan	GT Coupe	GT Sedan
Steering wheels:				
M Sport, four-spoke	S	S	S	S
N Sport, four-spoke, leather-wrapped (available with Sport Interior Group B20 only)	A	A	A	A
Tilt-Wheel adjustable steering column	A	A	S	S
Storage: Front center armrest	S	S	S	S
Front door map pockets	S	S	S	S
Glove compartment, upper and lower with cup holders	S	S	S	S
Overhead compartment	S	S	S	S
Sunroof, power, glass (available spring 1994)	A	A	A	A

Exterior Dimensions



Option Groups

Some available options may require additional equipment. See your dealer for details.

RPO	Grand Am SE		Grand Am GT		
	1SB	1SC	1SA	1SB	1SC
O60 Air conditioning	■	■	S	S	S
N33 Tilt-Wheel adjustable steering column	■	■	S	S	S
CD4 Controlled-cycle wipers	■	■	S	S	S
K34 Cruise control	■	■	■	■	■
C49 Defogger, electric rear window	■	■	■	■	■
UM6 Radio, Delco ETR AM/FM stereo with auto-reverse cassette	■	■	■	■	■
AM9 Split-folding rear seat	■	■	■	■	■
A31 Power windows with driver's "express-down" feature	■	■	■	■	■
DG7 Power mirrors, Sport, LH and RH (black)	■	■	■	■	■

	SE Coupe	SE Sedan	GT Coupe	GT Sedan
Battery, Delco Freedom with rundown protection	S	S	S	S
Brakes: Power disc/drum	S	S	S	S
Anti-lock braking system (ABS), 4-wheel	S	S	S	S
Brake/transmission shift interlock safety feature (with automatic transmission)	S	S	S	S
California/New York emissions requirements	A	A	A	A
Engine block heater	A	A	A	A
Engines/Transmissions: 2.3 liter Quad OHC 4-cyl. with 5-speed manual	S	S	-	-
2.3 liter Quad OHC 4-cyl. with 3-speed automatic (N/A with 1SC)	A	A	-	-
2.3 liter Quad OHC 4-cyl. with 4-speed automatic	A	A	-	-
2.3 liter Quad 4 DOHC 16-valve 4-cyl. with 4-speed automatic	-	-	A	A
2.3 liter H.O. Quad 4 DOHC 16-valve 4-cyl. with 5-speed manual	-	-	S	S
3.1 liter 3100 SFI V6 with 4-speed automatic (requires air conditioning and 15" or 16" tires)	A	A	A	A

	SE Coupe	SE Sedan	GT Coupe	GT Sedan
Exhaust system, stainless steel	S	S	S	S
Extensive anti-corrosion protection featuring two-sided galvanized steel body panels	S	S	S	S
Front-wheel drive	S	S	S	S
GM Computer Command Control	S	S	S	S
Steering, power rack-and-pinion	S	S	S	S
Suspension, MacPherson strut front	S	S	S	S

S = Standard A = Available - = Not available
⁽¹⁾ Tire chains should not be used. They may cause damage. See Owner's Manual.
[†] = Not available with option group 1SA

Interior Dimensions

Coupe	Headroom, f/r:	37.8/36.5"
	Legroom, f/r:	43.3/33.9"
	Shoulder room, f/r:	54.0/54.4"
	Hip room, f/r:	49.1/52.6"
	Trunk:	13.2 cu. ft.
Sedan	Headroom, f/r:	37.8/37.0"
	Legroom, f/r:	43.3/34.9"
	Shoulder room, f/r:	54.0/54.2"
	Hip room, f/r:	49.1/51.4"
	Trunk:	13.2 cu. ft.

Specifications

Engine/drive:	Front engine, front-wheel drive
Curb weight:	2736 to 2882 lbs.
Fuel capacity:	15.2 gal.

Exterior Colors
See dealer for model/color availability.

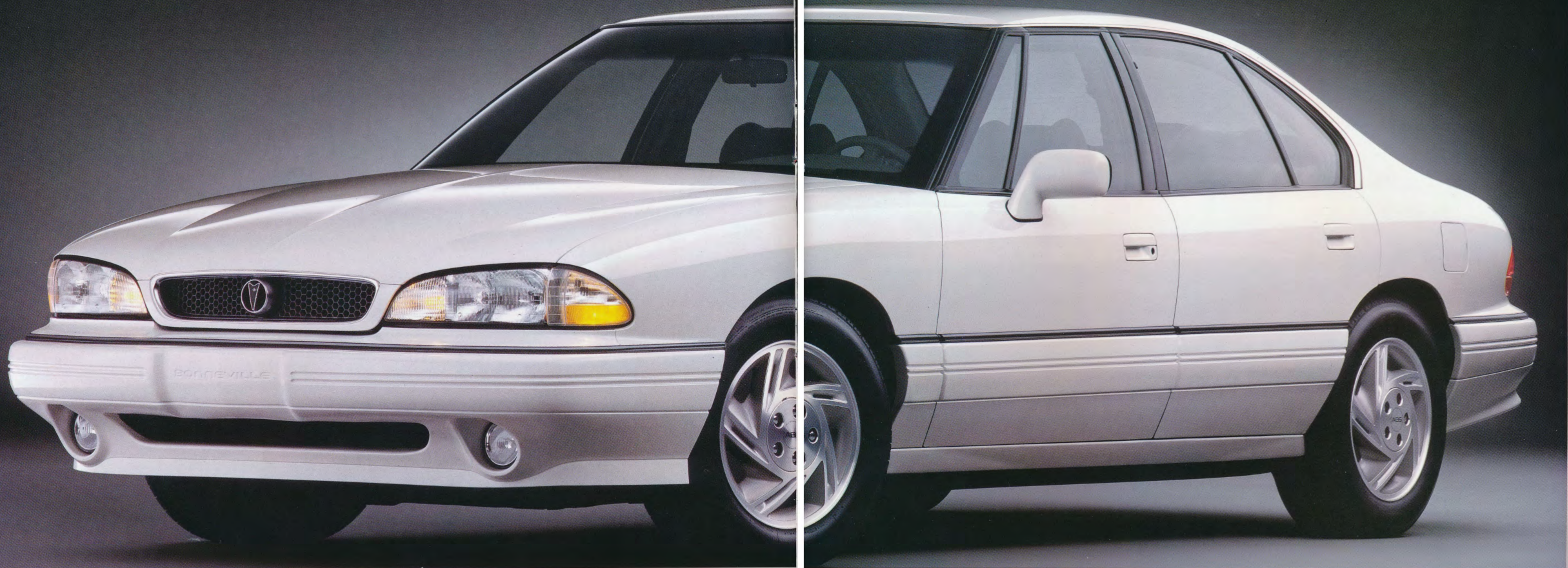


GRAND AM

39

BONNEVILLE





Standard equipment on every Bonneville includes:

Driver and passenger airbags

Four-wheel anti-lock brakes

Rustproof composite front fenders that rebound from minor impacts, dents and dings

18-cubic-foot trunk

The services of Pontiac Cares

Above, Bonneville SE in Bright White with 5-blade 16" wheels.

Preceding pages, Bonneville SLE in Light Gray Metallic.

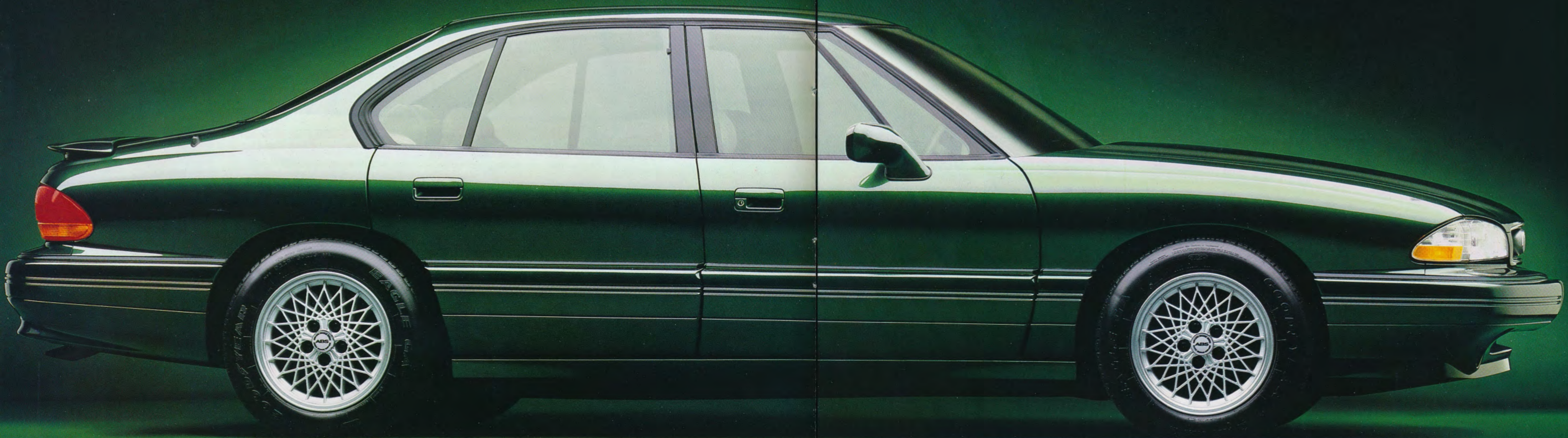
How to get you where you're going...

Ln reality, there are many cars that can serve as dutiful transportation. But for the enthusiast who considers Bonneville SE, there's much more to the act of driving.

For you, Pontiac puts a 3.8 liter V6 with 170 horsepower under the hood, matched to an electronic four-speed automatic transmission. Plus, there's a sophisticated anti-lock braking system and available Traction Control at your command.

Like every Bonneville, SE's two-sided galvanized steel resists rust, while its totally rustproof composite front fenders have a forgiving personality by bouncing back from minor impacts. Plus, its spacious interior easily carries six adults. These features are all standard, as are driver and passenger airbags, air conditioning, power windows, power door locks, and a powerful electronically tuned Delco AM/FM stereo.





Technology for the upwardly mobile.

With an understated sense of sophistication, Bonneville SE with the Sport Luxury Edition (SLE) package goes about its business of giving drivers what they want.

This specially equipped version of Bonneville shares SE's powerful 3800 V6 engine and 4-speed automatic transmission, but further enhances its performance with a 3.06:1 axle ratio, Crosslace 16" aluminum wheels and 60-series touring tires.

Standard equipment includes four-wheel anti-lock brakes, a fully independent suspension and rack-

and-pinion steering with variable-assist. This advanced power steering system turns the front wheels with maximum assist at parking speeds (for enhanced maneuverability) and with minimal assist at highway speeds (for increased road feel).

Inside, easy-to-read analog gauges keep drivers well informed about the automotive world around them. Leather seating surfaces cover seats that offer firm, comfortable support. Driver and passenger airbags provide the necessary peace of mind that will help you further enjoy every trip.

Standard equipment on every Bonneville SE with the SLE package includes:

Driver and passenger airbags

Four-wheel anti-lock brakes

A 3800 V6 engine

Four-speed automatic transmission

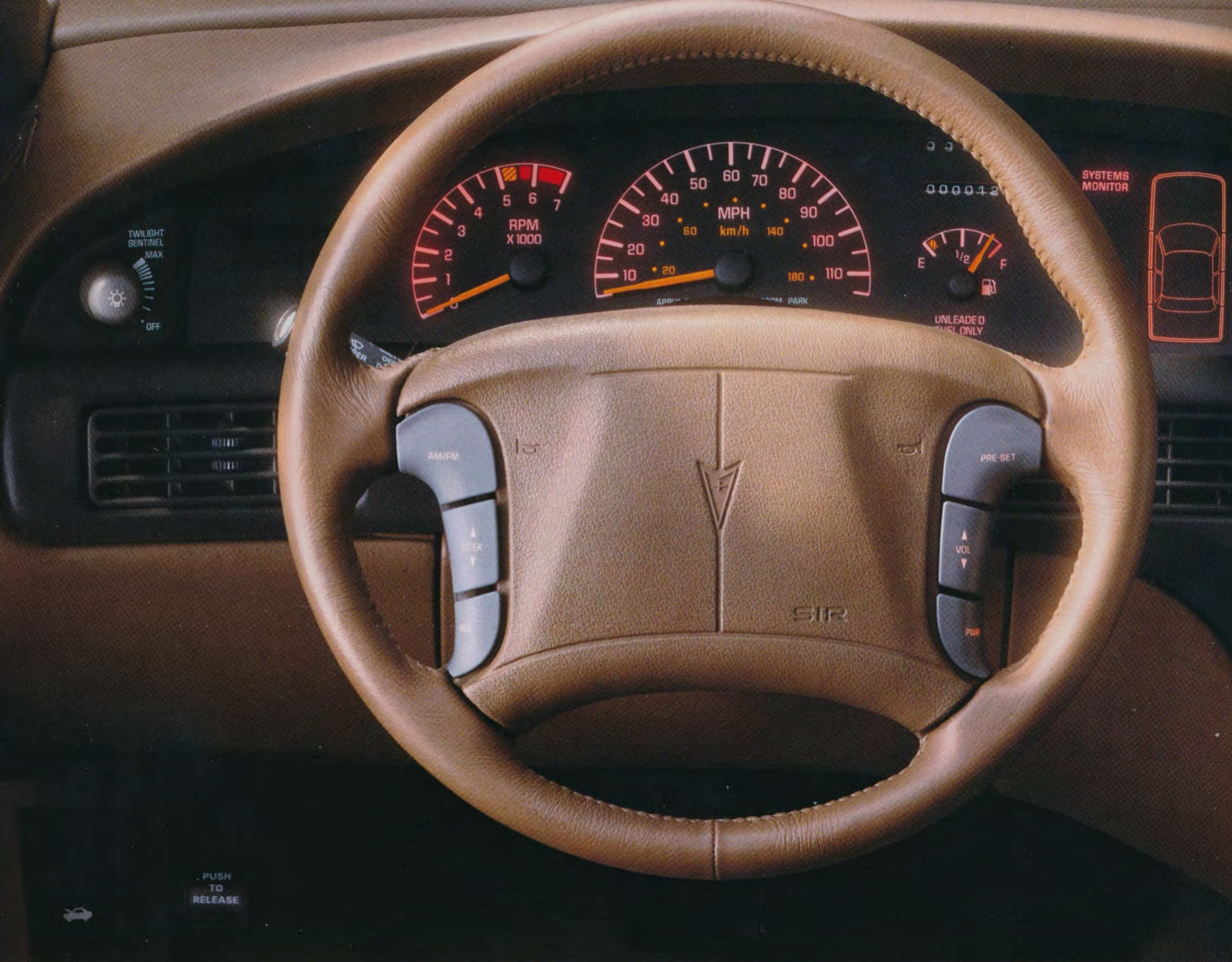
Air conditioning, power windows and door locks

Leather seating surfaces

Shown, Bonneville SLE in Dark Green Metallic with Silver Crosslace 16" aluminum wheels.



Bonneville SLE interior shown in Beige leather.



Standard interior equipment on every Bonneville includes:

Driver and passenger airbags

Air conditioning

Power windows and door locks

At left, Bonneville's easy-to-read instrument panel.

Below, Bonneville seating in Gray Doral cloth.

Bottom left, in moderate-to-severe front-end collisions, Bonneville's driver and passenger airbags inflate and deflate within a tenth of a second. For best protection, always wear safety belts, even with airbags.

Bottom right, Bonneville's pass-through access to the trunk.



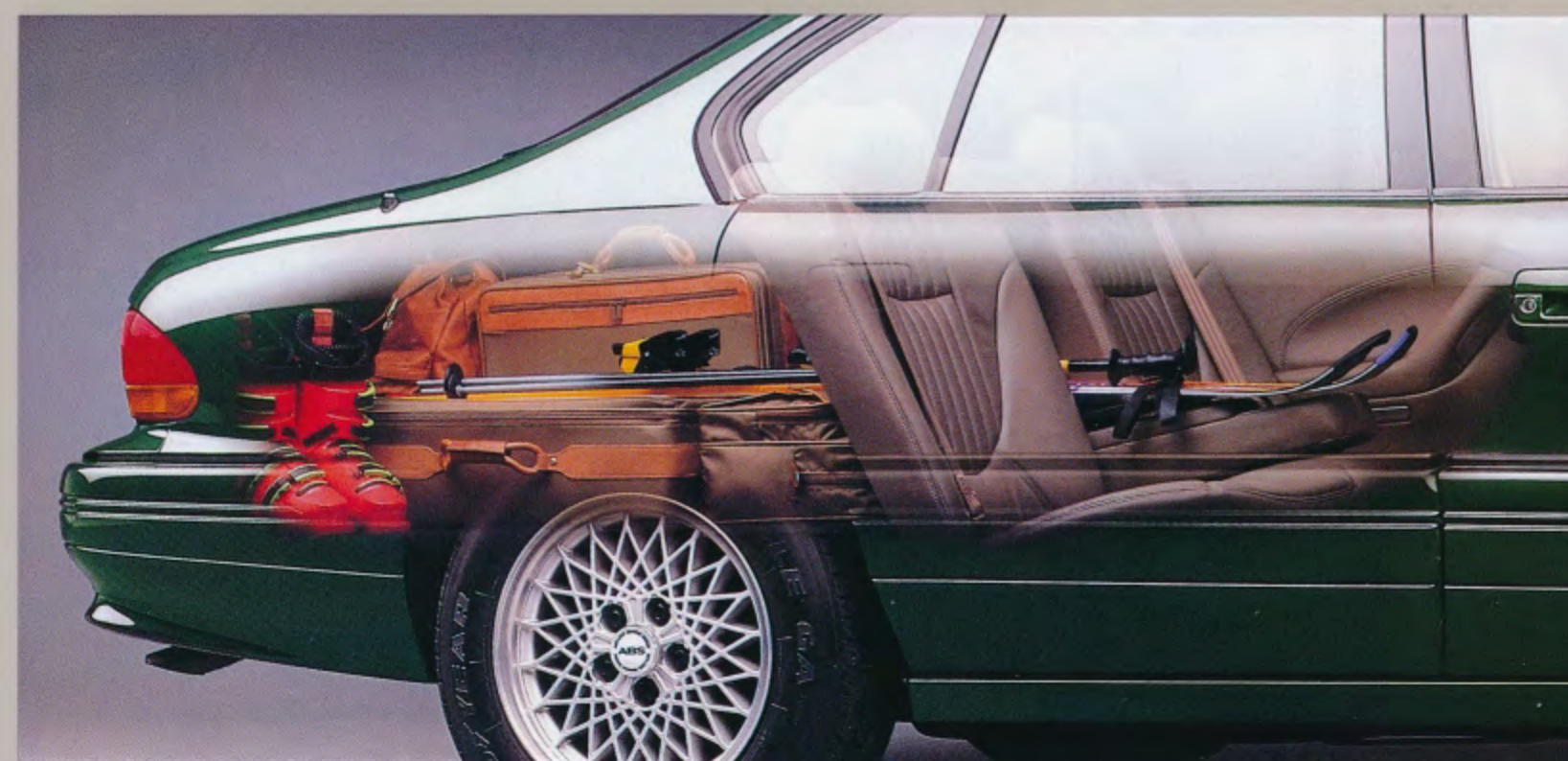
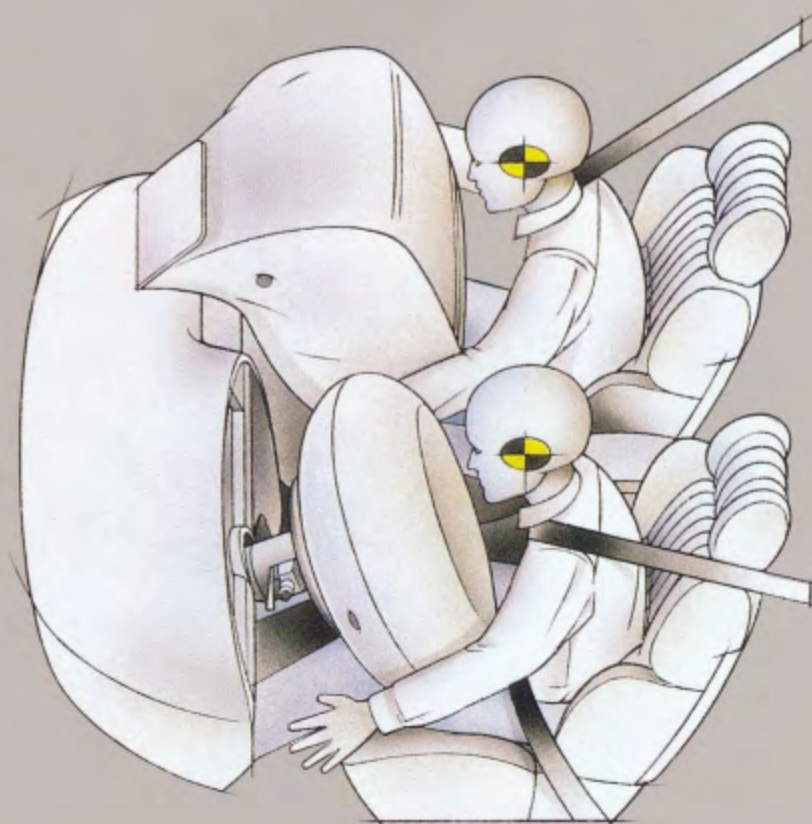
Where instinctive meets distinctive.

The moment you take the driver's seat in Bonneville, one thing becomes strikingly apparent: logical order prevails.

Thanks to the efforts of countless designers and engineers, Bonneville rewards you with seats that support, controls that are easy to reach, and gauges that can be read at a glance. Safety technology includes driver and passenger airbags (of course, always wear safety belts, even with airbags), a brake/transmission shift interlock and rear-door child-security locks. Added security is provided by the

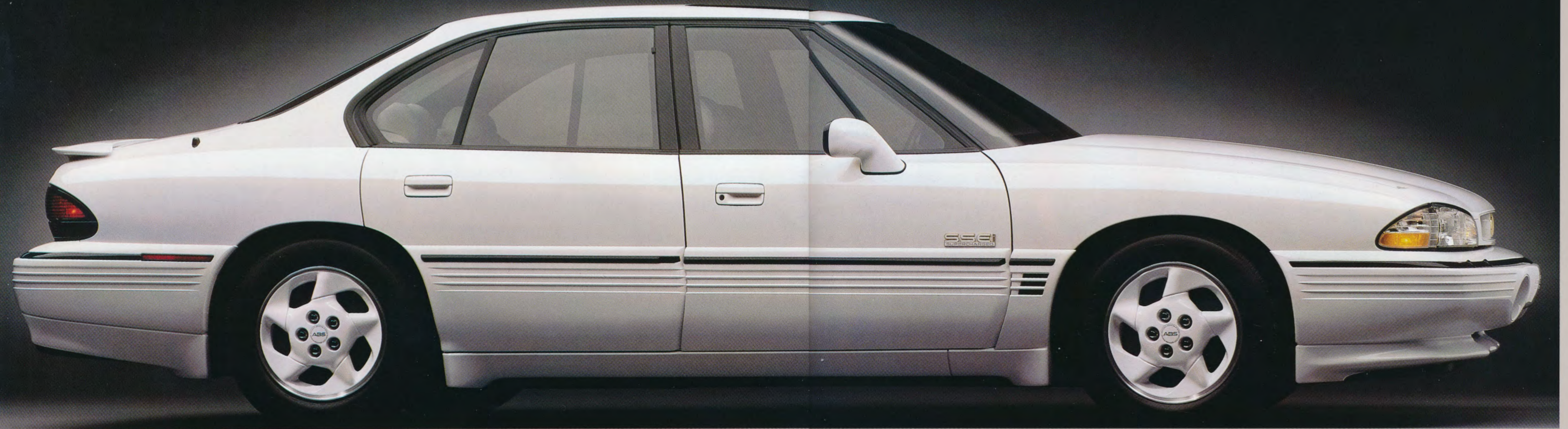
PASS-Key II theft-deterrent system and available remote keyless entry.

Available steering wheel radio controls for the new Delco 2001 Series stereo are ergonomically correct for drivers to access without removing their hands from the wheel. Even more impressive is Bonneville's optional retained-accessory power feature. It is an intelligent system that allows for operation of the windows, sound system and optional sunroof for up to ten minutes after the ignition has been turned off, or until a front door is opened.



BONNEVILLE SSE





Pass with care.

With power comes responsibility. In recognition of this, Bonneville SSE entrusts drivers with plenty of power. SSE's power comes from the proven 3800 V6, a smooth-running 3.8 liter machine that produces 170 horsepower and 225 ft-lbs of torque. The available SSEi Supercharger Package ups the power ante, thanks to high-performance components that help boost the output of the Supercharged 3800 V6, to 225 horsepower and 275 ft-lbs of torque - making Bonneville SSEi the most powerful supercharged Pontiac ever produced.

Both 3800 V6s are matched to an electronically controlled 4-speed automatic overdrive transmission. On the SSEi Supercharger Package, this same transmission is fitted with driver-selectable shift modes and is available with a sophisticated Traction Control system that uses both the engine management and the anti-lock braking system (ABS) sensors. As you'd expect on a car of this character, four-wheel anti-lock brakes are standard for added steering control during hard braking especially on slick, slippery or wet roads.

Standard equipment on every Bonneville SSE with SSEi Supercharger Package includes:

Driver and passenger airbags

Four-wheel anti-lock brakes

Supercharged 3800 V6 power

Electronically controlled 4-speed automatic transmission with driver-selectable shift modes

Shown, Bonneville SSE with SSEi Supercharger Package in Bright White with 16" Torque Star wheels.

Preceding pages, Bonneville SSE in Black with 16" Torque Star wheels.



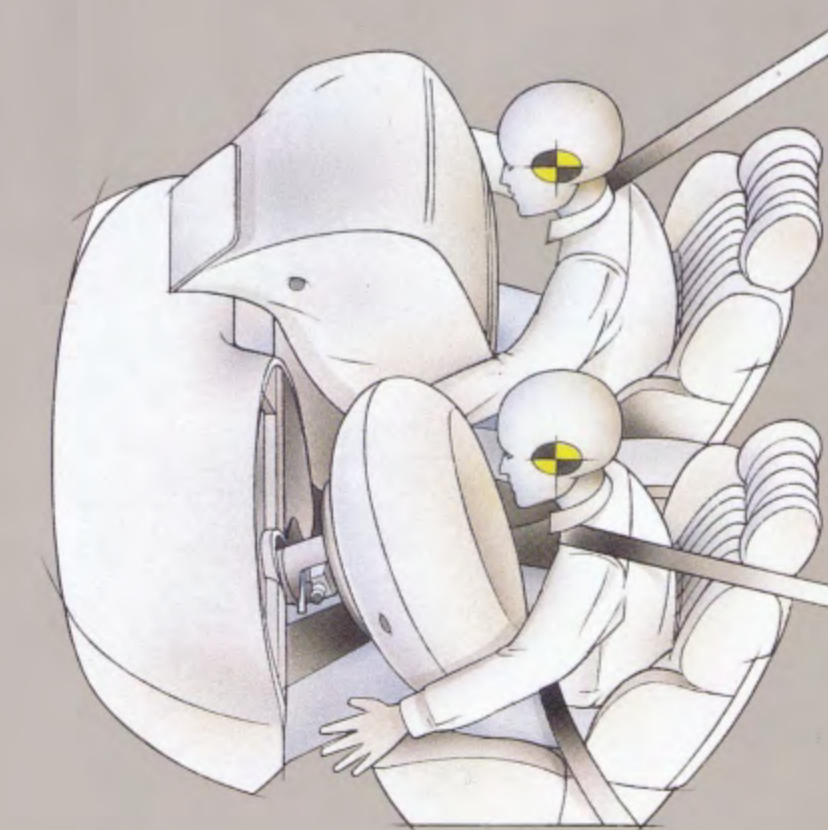
Making life in the passing lane more comfortable.

Given the ability of Bonneville SSE and SSEi to pass vehicles with lesser capabilities, it's nice to know that these road cars accomplish the task for which they were designed while keeping you comfortable and secure.

Your time spent in the driver's seat is made pleasant by standard air conditioning, power windows and locks, Tilt-Wheel adjustable steering column and power/heated outside rearview mirrors. Then there's the concert-like sound from the new Delco 2001 Series AM/FM cassette sound system with 7-band graphic equalizer (compact disc player available). In an effort to help drivers keep their hands on the wheel, SSE sound system selections all include radio

controls on the steering wheel. This is a convenience that, once experienced, will make you wish you always had it.

Drivers who select the SSE or SSEi Package can also choose available drive-enhancing features like a sophisticated Head-Up instrument display and 12-way power articulating bucket seats outfitted with leather seating surfaces. Automatic air conditioning, a full-featured theft-deterrent system and a power sunroof help complete the driving environment. There's even a Computer Command Ride (CCR) adjustable suspension system that provides drivers with touring- or performance-preferred suspension settings at the touch of a button.



Standard interior equipment on every Bonneville SSE includes:

Driver and passenger airbags

6-way power driver's seat

Steering wheel radio controls

Above, SSE's available 12-way articulating bucket seats with leather seating surfaces.

Above left, Bonneville SSEi's instrument cluster.

At left, in moderate-to-severe front-end collisions, airbags inflate and deflate within a tenth of a second. For best protection, always wear safety belts, even in cars with airbags.



Standard equipment on every Bonneville includes:

Four-wheel anti-lock brakes

Four-wheel independent suspension

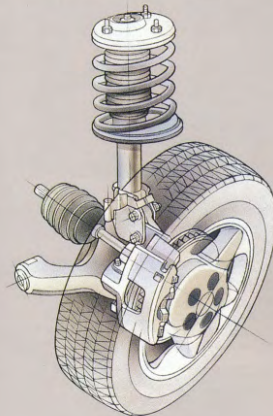
Four-speed automatic overdrive transmission

At left, Bonneville SSEi in Bright Red.

At right, SSE controls for available Computer Command Ride adjustable suspension, Traction Control and driver-selectable transmission shift modes.

Below, the independent front suspension and front disc brakes of an SSE.

Bottom right, the SSEi's Supercharged 3.8 liter 3800 V6.



Don't just weather the storm, dominate it.

With all the technology inherent in Bonneville, you'll forget to pay attention to the weather forecast.

Its front-wheel drive enhances traction on all roads, wet or dry, snow-covered or clear. Additionally, every Bonneville is equipped with computer-controlled four-wheel anti-lock brakes (ABS), a system that can modulate brake-line pressure up to 15 times per second to all four wheels or just one, as the situation warrants.

The benefit is added steering control while braking hard. Because the anti-lock system keeps the wheels from skidding when you brake – skidding that might happen when you're slowing down on a slick road or trying to avoid a dangerous road obstacle – the rotating tires have additional traction that can help you avoid trouble.

In addition to this anti-lock braking system (ABS), all Bonneville models can be equipped with electronic Traction Control that combines the processing power of the 3800 V6's engine management computer and the sensors of the ABS system to prevent wheel spin under acceleration at

any speed – even in corners. The result: being able to get your vehicle

going with much more control over wet or slippery surfaces.

Every Bonneville is also equipped with a four-wheel independent suspension and tires specifically selected for each model's individual chassis calibrations. When SSE is equipped with Traction Control, Bonneville's new Computer Command Ride (CCR) adjustable suspension is available. CCR gives drivers the option of a comfort-oriented "Touring" suspension setting or the more aggressive "Performance" setting.

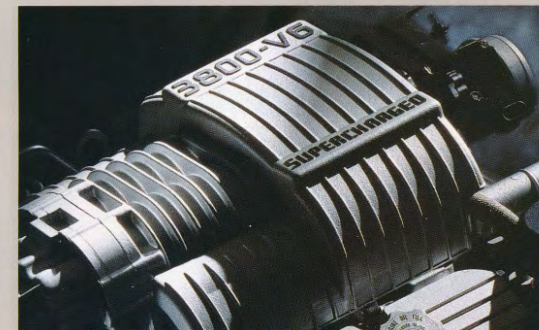
The "Performance" mode provides a firm, responsive ride at all times. The "Touring" mode automatically switches between a more road-cushioned ride and the "Performance" ride when conditions require it.

Regardless of the Bonneville model you select or how it is equipped, it is a package that inspires driving confidence, come rain or shine.



	3.8 liter V6 4-speed automatic	Supercharged 3.8 liter V6 4-speed automatic
SE	S	-
SSE	S	-
SSEi ⁽¹⁾	-	S
Horsepower	170 @ 4800 rpm	225 @ 4400 rpm
Torque (ft-lbs)	225 @ 3200 rpm	275 @ 3200 rpm

S = Standard A = Available -- = Not available ⁽¹⁾With SSEi Supercharger Package



Key Features at a Glance Shown in Red



Pontiac Cares

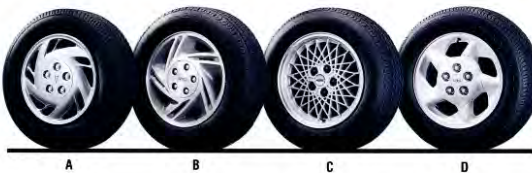
Pontiac backs every 1994 Bonneville with the following services. See pages 4-5 of this catalog for additional details.

	SE	SSE
Extensive 3-year/36,000-mile no-deductible limited warranty	S	S
24-hour Roadside Assistance that provides in an emergency:		
Free lock-out assistance	S	S
Free dead-battery assistance	S	S
Free out-of-fuel assistance	S	S
Free flat-tire change	S	S
Courtesy Transportation	S	S

Exterior Features

Sport Luxury Edition (H4U): Includes 16" aluminum Crosslace wheels (gold or silver), P225/60R16 touring tires, monotone applique and rocker molding, B20 Custom Interior, 45/45 bucket seats, leather seating areas, uplevel carpeting/floor mats, floor console, leather-wrapped steering wheel and shifter knob, power antenna, rear deck lid spoiler, rear window defogger and 3.06 axle ratio

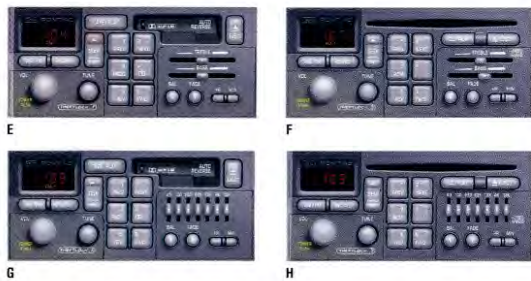
	SE	SSE
Monotone Appearance Package (B57): Includes monotone bodyside appliques and rocker molding	A	-
Antenna: Fixed mast (black)	S	-
Power mast (black)	A	S
Bumpers, soft fascia type with integral rub strips	S	S
Glass, Soft-Ray tinted	S	S
Headlamps: Composite halogen	S	S
Fog lamps	S	S
Headlamp washers	-	S
Mirrors: Sport, LH remote, RH manual	S	-
Sport, LH and RH power remote	A(1)	-
Heated with blue tint, power	-	S
Moldings: Wide monotone bodyside molding	S	-
Ribbed, aggressive monotone bodyside applique	-	S
Monotone ground effects package	-	S
Spoiler: Rear deck lid	A	S
Spoiler delete	A(2)	A
Tires (steel-belted radial): P215/65R15 blackwall, touring (QPH)	S	-
P225/60R16 blackwall Eagle GA, touring (QNX)	A	S
P225/60ZR16 blackwall Eagle GT+4, Z-rated (QVF) (standard with WA6 supercharged 3800 engine)	-	A
Compact spare	S	S
Wheels/Wheel Covers:		
A Bolt-on wheel covers, 15" (PG1)	S	-
B Cast aluminum 5-blade, 16", gray ports (PF5)	A	-
C 16" cast aluminum Crosslace, silver (N60) or gold (N73)	A(2)	A
D 16" cast aluminum Torque Star white wheels (PX0) with White exterior, silver wheels (PA6) with all exterior colors	-	S



Interior Features

Accessory emergency road kit	-	S
Acoustical insulation, extensive	S	S
Airbag: Driver's and passenger side	S	S
Safety belts, 3-point active, height adjustable (front)	S	S
Air conditioning: Manual	S	S
Automatic with outside air temperature indicator	-	A
Console, front floor with storage and rear HVAC vents with storage	A	S
Cruise control	A(1)	S

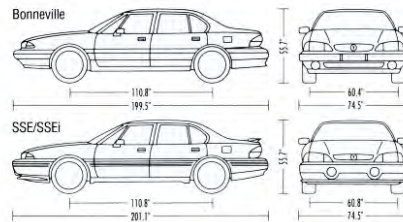
	SE	SSE
Interior Features (continued)		
Custom Interior (B20): With AM6 45/55 split bench seat (Doral cloth, convenience net, front storage armrest with dual cup holders and deluxe floor mats). With AS7 45/45 bucket seats (Doral cloth, illuminated visor vanity mirrors, console with rear heater/air conditioning vents and flip-out cup holder, overhead console with power outlet, convenience net, and deluxe floor mats). Leather seating areas also available with 45/45 buckets	A	S
Deck lid release	A(1)	S
Defogger, electric rear window	A	S
Door locks, power	S	S
Enhancement group (includes RH/LH illuminated visor mirrors, leather steering wheel and Twilight Sentinel)	A	-
Fuel-filler door lock, electronic (requires UA6 anti-theft system)	-	A(1)
Illuminated entry system and retained accessory power	A(1)	S
Instrumentation: Backlit, analog, speedometer, fuel and coolant temperature	S	-
Backlit, analog, speedometer, tachometer, fuel, coolant temperature, battery voltage and oil pressure	A(1)	-
Systems monitor includes coolant temperature light, oil pressure indicator, battery voltage light and washer fluid low, low coolant, change oil, check gauges (oil pressure, battery voltage, coolant temperature), hood ajar, trunk ajar and lamp monitor (J50-SSE) (supercharged models include boost gauge)	-	S
Head-Up Display, requires electrochromic automatic inside rearview mirror, remote keyless entry and automatic air conditioning	-	A(1)
Instrument panel trim: Simulated burl woodgrain - with split bench seats only	S	-
Soft-touch graphite - with bucket seats only	A	S
Keyless entry system, remote	A	A
Lamps: IP, ashtray, glove box, trunk, front overhead console, reading	S	S
Headlamps-on warning (included in lamp group), key in ignition, fasten safety belts	A(1)	S
Rear rail courtesy	S	-
Rear rail reading (included in lamp group)	A(1)	S
Twilight Sentinel	A(1)	S
Lights, cluster warning, includes: oil pressure, check engine, brake system, security system, inflatable restraint (airbag)	S	S
Luggage compartment convenience net	A	S
Mats: Front and rear floor	S	-
Deluxe, front and rear floor	A	S
Mirrors: Visor vanity, RH and LH covered	S	-
Illuminated visor vanity, RH and LH covered	A(1)	S
Power windows with driver's "express-down" feature	S	S



Radio: ETR AM/FM stereo with clock (UM7)	S	-
E Delco 2001 Series ETR AM/FM stereo with auto-reverse cassette, clock, seek up/down and Delco theft lock (UN6)	A	-
F Delco 2001 Series ETR AM/FM stereo with compact disc player. Includes clock, seek up/down, search and replay and Delco theft lock (U1C)	A	-
G Delco 2001 Series ETR AM/FM stereo with auto-reverse cassette and 7-band graphic equalizer. Includes clock, touch control, seek up/down, search and replay, leather-wrapped steering wheel with radio controls, power antenna, Delco theft lock and 6-speaker system on SE and SSE with 1SA, 8-speaker system on SSE with 1SB (UT6)	A	S
H Delco 2001 Series ETR AM/FM stereo with compact disc player and 7-band graphic equalizer. Includes clock, touch control, seek up/down, search and replay, leather-wrapped steering wheel with radio controls, power antenna, Delco theft lock and 6-speaker system on SE and SSE with 1SA, 8-speaker system on SSE with 1SB (UP3)	A	A
4-speaker system (not available with UT6/UP3 radios)	S	-
6-speaker system (not available with UM7 radios)	A	S
8-speaker system (not available with UM7/UN6/U1C radios)	-	A
Rear-seat pass-through	S	S
Seats: 45/55 split bench with manual recliners, Matrix cloth trim	S	-
45/55 split bench with manual recliners and storage armrest with dual cup holders, Doral cloth trim	A	-

	SE	SSE
Interior Features (continued)		
45/45 bucket with center console storage, Doral cloth trim	A	S
45/45 bucket - leather seating areas, non-articulating	A	A
45/45 articulating 12-way power, driver and front passenger - leather seating areas	-	A
Power driver seat, 6-way (bucket)	A	S
Power passenger seat, 6-way (split bench)	A	-
Power passenger seat, 6-way (bucket)	A	A
Steering wheels: 4-spoke, urethane	S	-
4-spoke, leather-wrapped	A	-
4-spoke, leather-wrapped w/radio controls (included with UT6/UP3 radios)	A	S
Tilt-Wheel adjustable steering column	S	S
Storage: Front center armrest with dual cup holder	A	-
Rear center armrest with dual cup holder (standard with leather seating areas)	A	S
Sunroof, power, glass (includes illuminated visor vanity mirrors)	A	A
Theft-deterrent systems: PASS-Key II	S	S
Full-feature anti-theft (includes central lock/unlock and fuel-filler door lock)	-	A

Exterior Dimensions



Option Groups

Some available options may require additional equipment. See your dealer for details.

	Bonneville SE			Bonneville SSE	
	1SB	1SC	1SD	1SA	1SB
RPO					
TR9	■	■	■	S	S
K34	■	■	■	S	S
UB3	■	■	■	U50**	U50**
C97	■	■	■	S	S
UN6	■	■	■	UT6**	UT6**
A90	■	■	■	S	S
DG7	■	■	■	DC6**	DC6**
AG1	■	■	■	AC3**	AC3**
C49	■	■	■	S	S
T2V	■	■	■	S	S
US7	■	■	■	S	S
D64	■	■	■	S	S
NP5	■	■	■	S	S
T82	■	■	■	S	S
B20	■	■	■	S	S
AU0	■	■	■	■	■
UV6	■	■	■	■	■
DD8	■	■	■	■	■
C68	■	■	■	■	■
U85	■	■	■	■	■
AC1	■	■	■	■	■
UA6	■	■	■	■	■
NW9	■	■	■	■	■

Mechanical

	SE	SSE
Brakes: Power disc/drum, anti-lock braking system (ABS), 4-wheel	S	S
Brake/transmission shift interlock safety feature	S	S
California/New York emissions requirements	A	A
Computer Command Ride (CCR) (requires Traction Control and 45/45 bucket seats)	-	A
Engines/Transmissions: 3.8 liter 3800 SFI V6 with electronically controlled 4-speed automatic	S	S
SSE: Supercharger Package (WA6): includes 3800 supercharged V6 with electronically controlled automatic, driver-select shift controls, boost gauge, Thaxton carpet and SSE floor mats and badging	-	A
Exhaust: Stainless steel single	S	-
Stainless steel split dual rectangular	-	S
Extensive anti-corrosion protection with two-sided galvanized steel doors, quarter panels, hood, deck lid and rockers	S	S
Steering: Power rack-and-pinion	S	S
Power variable-effort	A*	S
Traction Control (requires 45/45 bucket seats)	A	A

S = Standard A = Available - = Not available
 (1) Available in Option Group only. (2) Available with H4U only.
 * = Standard with Y52 Performance & Handling Package.
 † = With B20 Custom Interior only.

Interior Dimensions

Headroom, f/r:	39.2/38.3"
Legroom, f/r:	42.6/38.0"
Shoulder room, f/r:	59.8/59.4"
Hip room, f/r:	57.2/57.1"
Trunk:	18 cu. ft.

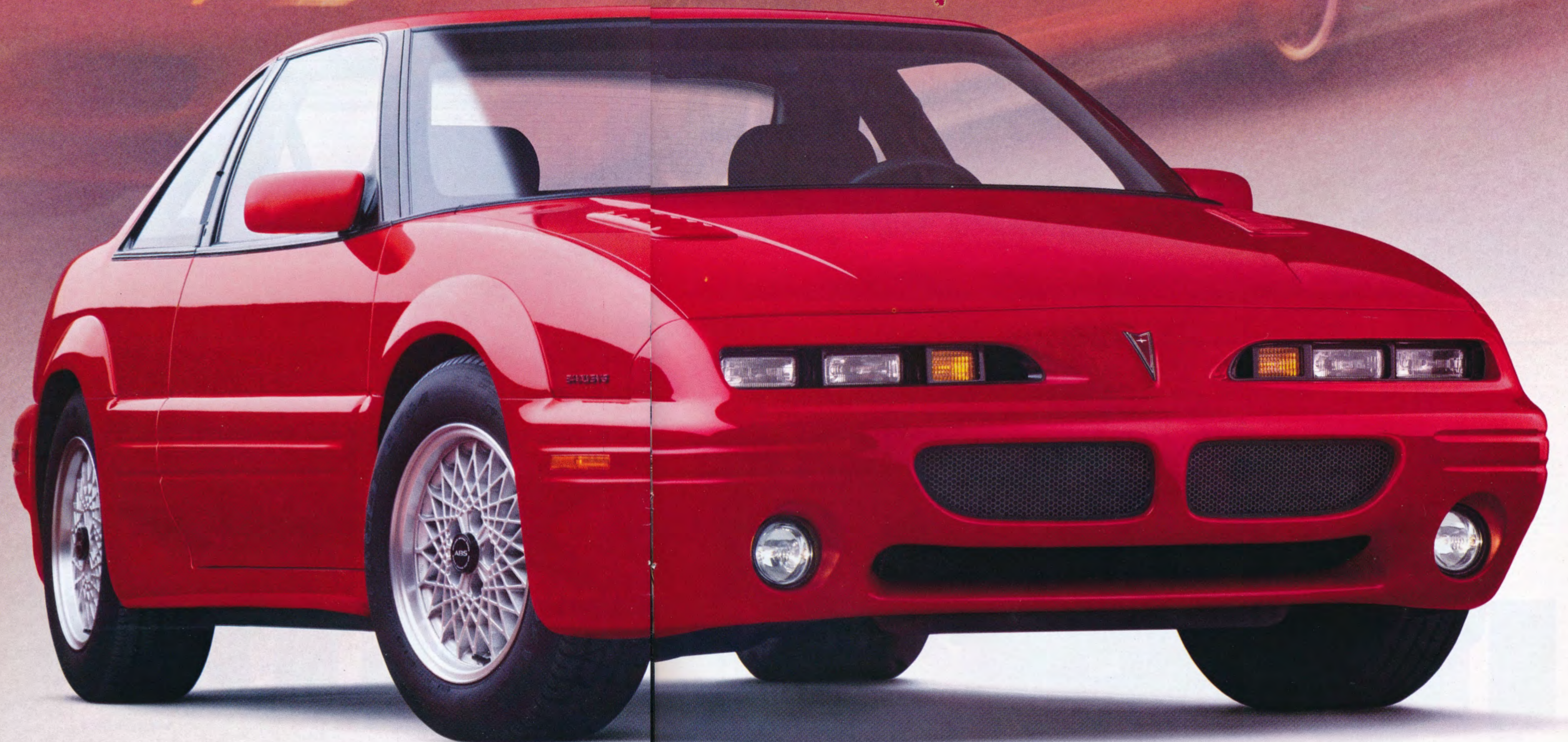
Specifications

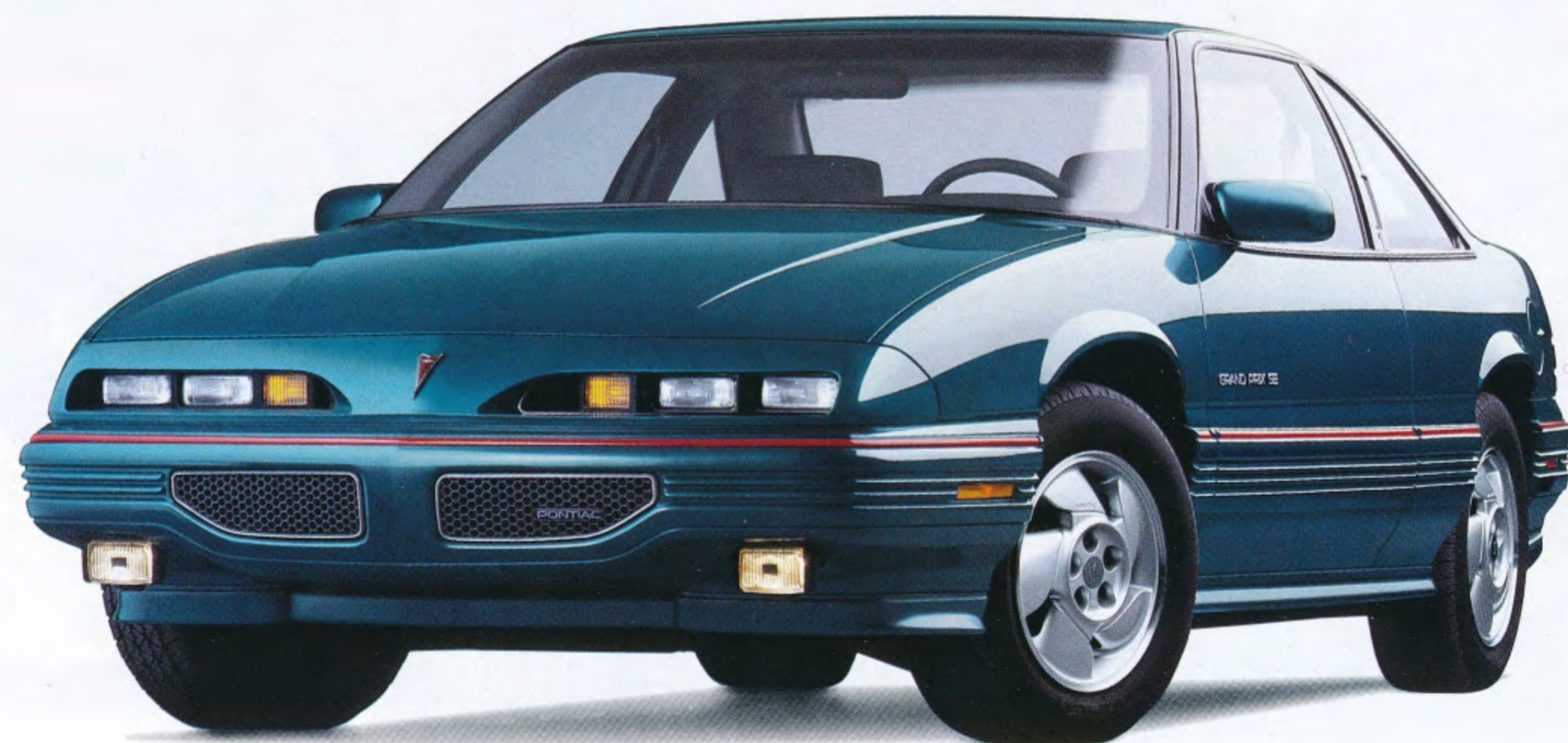
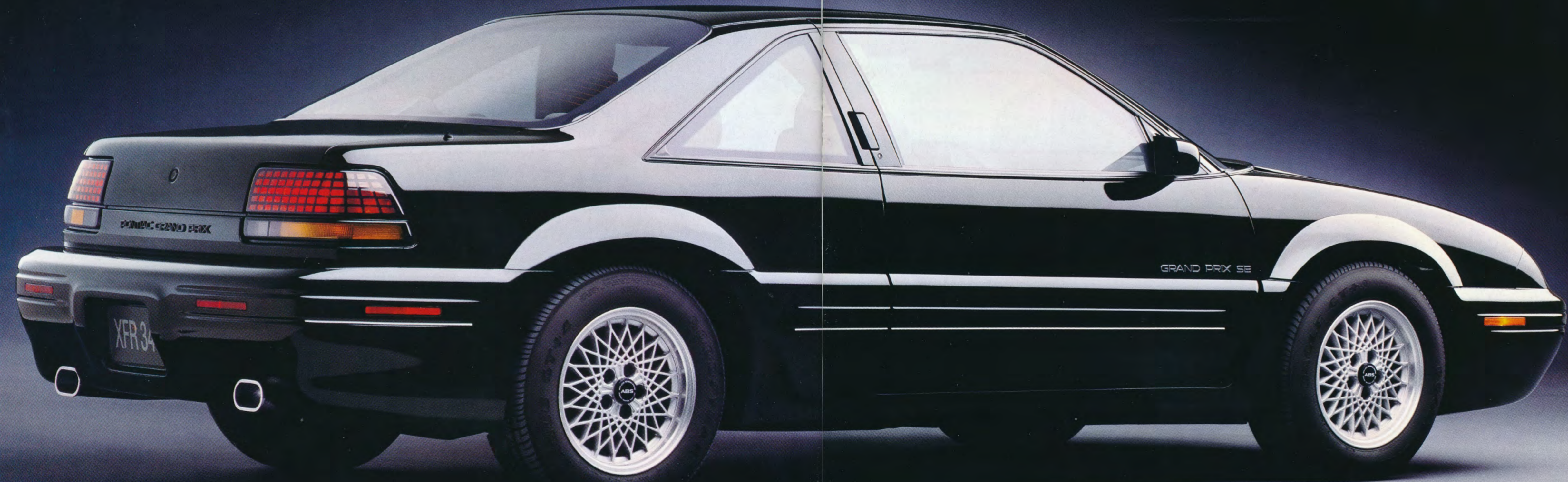
Engine/drive:	Front engine, front-wheel drive
Curb weight:	3401 to 3588 lbs.
Fuel capacity:	18 gal.

Exterior Colors
See dealer for model/color availability.



GRAND PRIX





The true super coupes.

Almost every manufacturer builds coupes of one kind or another. Some even have pretensions of being sporty.

But Grand Prix Coupes are the ones that give you four-wheel independent suspension, four-wheel disc brakes, four-speed automatic transmission, and V6 power *standard*. These features are wrapped in a shape accented with mini-quad halogen headlamps and standard fog lamps.

Pontiac's super coupes begin with the SE, and its increased standard equipment list reads like an option sheet for most competitors: driver

and passenger airbags, air conditioning, power windows, Delco 2001 Series AM/FM cassette sound system with controls on the steering wheel, automatic power door locks, cruise control, power mirrors and much more.

Grand Prix's available Special Edition Coupe package and GTP packages add extra aggressiveness to an already outgoing body. Each adds its own equipment that includes special lower bodyside moldings, wheels, tires, and with the GTP, the 210-horsepower DOHC 3.4 liter V6.

Standard equipment on every Grand Prix includes:

Driver and passenger airbags

Power four-wheel disc brakes

Power windows and door locks

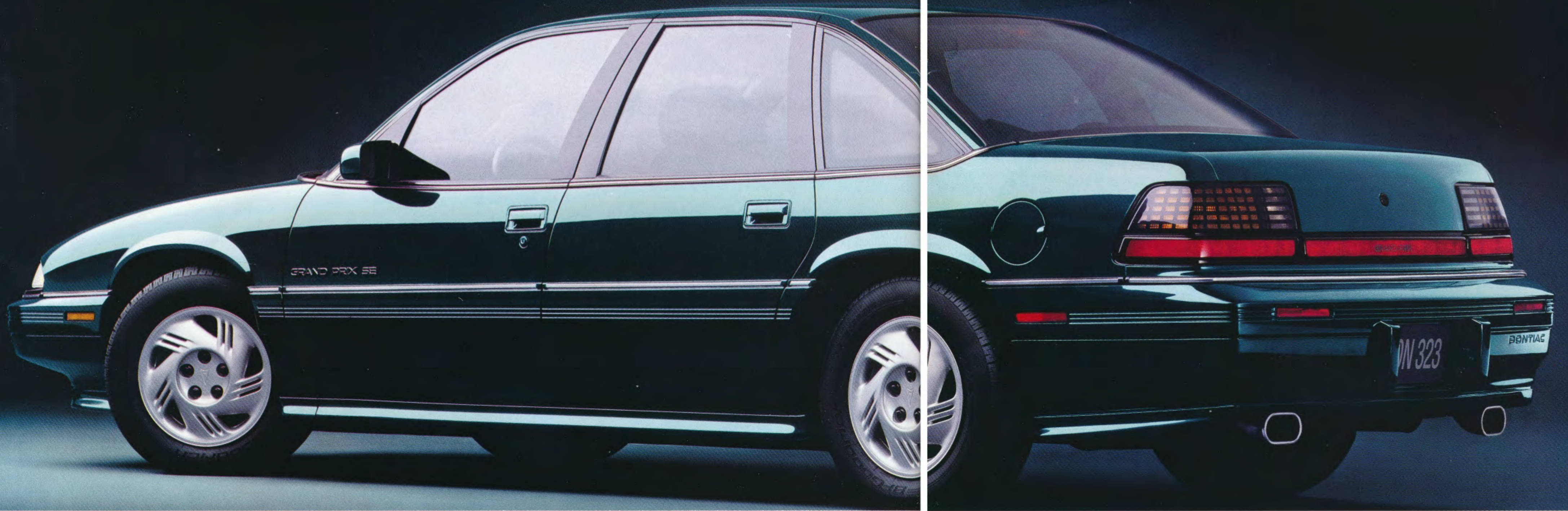
The services of **Pontiac Cares**

Above, Grand Prix SE Coupe with the Special Edition Coupe package in Black with Silver 16" Crosslace aluminum wheels.*

At left, Grand Prix SE Coupe in Bright Aqua Metallic with 16" five-blade aluminum wheels.

Preceding pages, Grand Prix GTP Coupe in Bright Red with Silver 16" Crosslace wheels.*

*With available four-wheel anti-lock brakes.



Standard equipment on every Grand Prix Sedan includes:

Driver and passenger airbags

Air conditioning

Tilt-wheel and cycle wipers

Power windows

Automatic power door locks

The services of Pontiac Cares

Below, Grand Prix GT Sedan in Bright White with White 16" 5-blade aluminum wheels.

At left, Grand Prix SE Sedan in Dark Teal with optional dual exhaust.

With Grand Prix Sedan, safe does not mean sedate.

Grand Prix Sedan proves that safety, performance and four doors can co-exist in the same car.

To ensure you get an automobile that's anything but merely functional (while still having the additional interior room and convenient rear-seat access provided by the rear doors), Grand Prix Sedan wears a thoroughly aerodynamic and sporty shape. It's powered by one of two technically advanced powertrains: the new 160-horsepower 3.1 liter 3100 SFI V6 or the 210-horsepower Dual Overhead Camshaft (DOHC) 3.4 liter V6. Both

engines are matched to electronically controlled four-speed automatic transmissions with overdrive and 2nd-gear start. Combined with Grand Prix's available four-wheel anti-lock brakes, you'll have the control you'll need for the type of driving you do – every day – on wet pavement or dry.

This performance-oriented equipment is complemented by many safety and interior features such as driver and passenger airbags,* Tilt-Wheel adjustable steering column, automatic power door locks, power windows with driver's side "express-down" fea-

ture and entry lighting – all standard.

Grand Prix SE Sedan, with its lower aero ground effects, Sport wheel covers, touring tires and distinctive light bar (that integrates the fog lamps into a common element with the standard headlamps and signal indicators), stands out on its own. The Grand Prix GT Sedan package adds even more aggressive equipment and styling elements. These include wider low-profile touring tires, special 16" aluminum wheels, dual exhaust, hood louvers, and the 3.4 liter DOHC engine.



*Always wear safety belts, even with airbags.



Grand Prix interior shown in available Graphite leather.



The new place to gauge driving excitement.

While Grand Prix's sleek exterior may be familiar to some, its interior is all new for 1994, and completely in keeping with Grand Prix's flair for driving excitement.

As a driver concerned about your personal driving environment, consider how Grand Prix's interior features meet your needs.

It has standard driver and passenger airbags, seating for five or six adults, power windows, automatic power door locks (that secure all

doors when the transmission is shifted out of Park), Tilt-Wheel adjustable steering column and entry lighting (that illuminates interior lights when you pull on a locked door handle).

Then look past these major features to the details of its design, like its white-on-black graphics or the natural placement of often-used controls.

Consider the purposeful design of the all-new Delco 2001 Series sound system that places the most-used controls closest to the driver, and

contours those controls for convenience and ease of use. Steering wheel radio controls are standard on all Grand Prix Coupe models and available on Sedans. Equally impressive is the logic of Grand Prix's available pass-through access between the trunk and the rear seat.

This feature effectively eliminates cargo-loading frustration by providing the solution for water or snow skis and other long items that can complicate leaving the driveway.



Standard equipment on every Grand Prix includes:

Driver and passenger airbags

Tilt-Wheel adjustable steering column

Air conditioning

Power windows

Above, instrument panel.

At left, Grand Prix's available pass-through access to the trunk.



Standard equipment on every Grand Prix includes:

Driver and passenger airbags

Four-wheel disc brakes

Enhanced V6 power

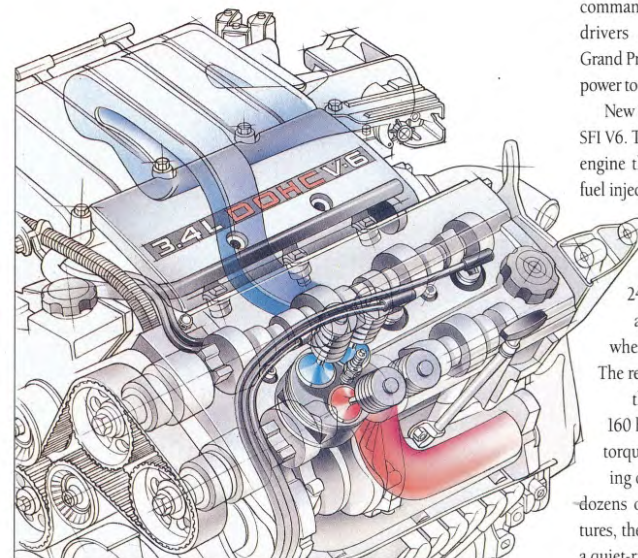
4-speed automatic overdrive transmission

Four-wheel independent suspension

At left, in moderate-to-severe front-end collisions, airbags inflate and deflate within a tenth of a second. For best protection, always wear safety belts, even with airbags.

At right, fuel and airflow mix in the DOHC 3.4 liter V6 engine.

Below, Head Up Display.



command of their vehicle help those drivers avoid accidents. Both of Grand Prix's available engines provide power to accelerate away from trouble.

New for 1994 is the 3.1 liter 3100 SFI V6. This is a technically advanced engine that features sequential port fuel injection, roller lifters, and a distributorless ignition that's so advanced it reads the position of the crankshaft 24 times per revolution (that's about 1000 times per second when you're at highway speeds). The result is an efficient V6 design that smoothly produces a full 160 horsepower and 185 ft-lbs of torque. Thanks to sound-absorbing composite rocker covers and dozens of other state-of-the-art features, the new 3.1 liter 3100 SFI V6 is a quiet-running engine.

Providing the extra power afforded by dual overhead camshafts and 4 valves per cylinder, Grand Prix's DOHC 3.4 liter engine is a 210-horsepower machine that also produces 215 ft-lbs of torque. The DOHC/24-valve design improves the combustion chamber "breathing" and helps the engine produce generous horsepower figures.

Beyond the available powertrain combinations, there's Grand Prix's standard four-wheel independent suspension. It quickly responds to driver inputs, but keeps road imperfections comfortably at bay by absorbing road shocks and bumps with carefully controlled motions.

There's also a racing-inspired disc brake at each wheel. While more than competent alone, this system can be affordably upgraded with an electronically controlled four-wheel anti-lock braking system (ABS). ABS goes a long way in helping drivers avoid accidents by giving them more steering control while hard braking, most notably during evasive maneuvers and on slippery roads.

In Grand Prix, performance means more than power.

Performance is more than going fast. To the engineers who created the 1994 Grand Prix, performance is an equation that combines power and off-the-line acceleration with safety and control.

Performance Means Safety

The most important aspect of performance is safety. In addition to the features that enable drivers to avoid accidents, Grand Prix features driver and passenger airbags for extra peace of mind.

Adding to Grand Prix's ability to keep occupants safe are automatic power door locks with unlock and re-lock features. All doors lock when the transmission is shifted out of Park, then automatically unlock when the ignition is turned off. If you stop with the engine running as you drop off or pick up passengers, the doors will automatically re-lock as you shift out of Park and continue driving.

While perhaps a less obvious safety feature, Grand Prix's latest-generation

Head Up Display (HUD) uses aircraft technology for the road-pilot's benefit. By projecting vital instrument information onto the windshield, the driver never has to take his or her eyes off the road. HUD instrumentation is an option on all models.

Performance Means Roadability

Perhaps the most active aspect of performance today is roadability – the way a vehicle is designed and manufactured for the roads you drive. Every Grand Prix meets this challenge equipped with front-wheel drive – a solid bonus for enhancing traction, especially on slick roads. Add standard 2nd-gear start, and Grand Prix's inclement-weather capabilities are even better, as it enables the driver to start from a stop in 2nd gear instead of 1st. This helps to reduce the likelihood of acceleration-induced wheel spin because there is less power delivered to the front wheels.

Second-gear start is another of the features provided by Grand Prix's



standard 4-speed automatic transmission. The transmission's primary benefit is that it provides drivers with an overdrive gear for quiet and easy cruising at highway speeds.

Performance Means Control

Features that give drivers solid

	3.1 liter 3100 SFI V6 4-speed automatic	DOHC 3.4 liter V6 4-speed automatic
Grand Prix SE	S	A
Horsepower	160 @ 5200 rpm	210 @ 5000 rpm
Torque (ft-lbs)	185 @ 4000 rpm	215 @ 4000 rpm

S = Standard A = Available

Key Features at a Glance Shown in Red



Pontiac Cares

Pontiac backs every 1994 Grand Prix with the following services. See pages 4-5 of this catalog for additional details.

	SE Coupe	SE Sedan
Extensive 3-year/36,000-mile no-deductible limited warranty	S	S
24-hour Roadside Assistance that provides in an emergency:		
Free lock-out assistance	S	S
Free dead-battery assistance	S	S
Free out-of-fuel assistance	S	S
Free flat-tire change	S	S
Courtesy Transportation	S	S

Exterior Features

Special Edition Coupe Package: Includes specific front/rear fascias with round fog lamps, lower aero skirting, wheel flares, 16" x 8" aluminum wheels, P225/60R16 ⁽¹⁾ tires, split-dual exhaust and sport suspension (B4U)	A	—
GTP Performance Package: Includes SE with B4U, 3.4 liter DOHC V6, hood louvers and GTP nameplates (B4S)	A	—
GT Appearance Package: Includes custom bucket seats, 3.4 liter DOHC V6, NWO five-blade 16" wheels, P225/60R16 tires, hood louvers, Sport suspension, dual exhaust and GT nameplates (B4Q)	—	A
Antenna: Fixed mast (black)	S	S
Power mast (black)	A	A
Glass, flush-fitting, completely Soft-Ray tinted and safety laminated	S	S
Headlamps: Composite halogen	—	S
Mini-quad halogen	S	—
Flash-to-pass safety feature	S	S
Fog lamps	S	S
Mirrors: Sport, LH remote, RH manual	—	S
Sport, LH and RH power remote (body color)	S	A
Spoiler, rear deck lid	A	—
Tires (steel-belted radial): P205/70R15 blackwall, touring (QIN)	—	S
P215/60R16 blackwall, touring ⁽¹⁾ (QPE)	S	A
P225/60R16 blackwall Eagle GT+4 ⁽¹⁾ (QXJ)	A	A ⁽²⁾
Compact spare	S	S



Wheels:		
A Sport 15" wheel covers with "bolt-on" feature (PG1)	—	S
B Cast aluminum 15" x 6" with wheel locks (PH3)	—	A
C Cast aluminum 16" x 6.5" with wheel locks (NWO)	S	A
D Cast aluminum 16" silver faced — included in B4U/B4S	A	—
Windshield wipers: "Wet-arm"	S	S
Controlled-cycle	S	S

Interior Features

Acoustical insulation, extensive	S	S
Airbags, driver's and passenger side	S	S
Air conditioning, electronic push-button control	S	S
Console: Front floor with storage (included on Sedan with bucket seats)	S	A
Front overhead with storage and reading lamps (included with B20 Custom Trim)	A	A
Cruise control	S	A
Deck lid release	S	A
Defogger, electric rear window	S	A
Door locks, power, automatic	S	S
Fabric: Cordae cloth interior	S	S

Interior Features (continued)	SE Coupe	SE Sedan
Doral cloth interior (included with B20 Custom Trim)	A	A
Leather seating surfaces with perforated inserts	A	A
Instrumentation:		
E Analog speedometer, tachometer, coolant temperature, fuel and trip odometer	S	S
Head-Up Display, digital speedometer and indicators for turn signals, hi-beam, low fuel, and "check gauges"	A	A
Keyless entry system, remote (requires deck lid release)	A	A



Lights: Door, courtesy and warning (with B20 Custom Trim)	A	A
Illuminated entry	S	S
Luggage compartment convenience net (with B20 Custom Trim)	A	A
Mirrors: Day/night rearview	S	S
Visor vanity, RH and LH covered	S	A
Illuminated visor vanity, RH and LH (with B20 Custom Trim)	A	A
Power windows with lighted switch and drivers' "express-down" feature	S	S
Radios:		
F Delco ETR AM/FM stereo with clock (includes seek up/down feature) (UM7)	—	S
G Delco 2001 Series ETR AM/FM stereo with seek up/down, search and replay, auto-reverse cassette and clock (UN6)	S	A
H Delco 2001 Series ETR AM/FM stereo with auto-reverse cassette, 7-band graphic equalizer, seek up/down, search and replay, clock and leather-wrapped steering wheel with radio controls (UT6)	A	A
I Delco 2001 Series ETR AM/FM stereo with seek up/down, compact disc player, theft lock, clock, and 8-speaker Hi-Performance sound system (U1C)	A	A
J Delco 2001 Series ETR AM/FM stereo with seek up/down, compact disc player, 7-band graphic equalizer and clock, steering wheel controls and 8-speaker Hi-Performance sound system (UP3)	A	A
Hi-Performance 8-speaker sound system with separate power amplifier and coaxial speakers (included with UT6/UP3 radios)	A	A
Steering wheel radio controls include Leather Appointment Group (available with UN6 cassette and U1C compact disc)	S	A



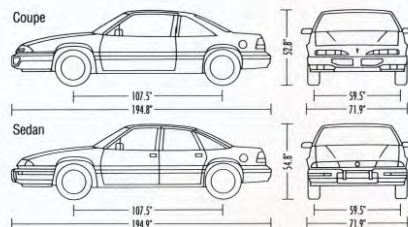
Safety belts, lap and shoulder, passive, driver and front passenger	S	S
Rear-seat, lap and shoulder; all outboard positions	S	S
Seats, front: 45/55 split with folding armrest, and reclining RH/LH seatbacks (AM6)	—	S
Sport, bucket (AR9) with reclining backs	S	—
Custom Trim (B20): Includes Doral cloth seats, leather-wrapped steering wheel, and front overhead mini-console with front and rear reading lamps, convenience net, door courtesy lamps, rear-seat pass-through with folding armrest and illuminated visor vanity mirrors. Also includes front armrest storage with 45/55 (AM6) seats and floor mats on Sedan	A	A
Driver's power, 6-way seat (AC3 with buckets, AG1 with 45/55)	A	A
Leather seating surfaces	A	A

Interior Features (continued)	SE Coupe	SE Sedan
Seats, rear: Three-passenger with integrated headrests	S	S
Three-passenger with integrated headrests, folding armrest and luggage compartment pass-through (with B20 Custom Trim)	A	A
Leather seating surfaces	A	A



Steering wheels:		
K Sport, four-spoke urethane with airbag	—	S
L Sport, leather-wrapped with airbag and radio controls (with UT6/UP3 radios)	S	A
Tilt-Wheel adjustable steering column	S	S
Storage: Front center armrest (with B20 Custom Trim and AM6 seats)	—	A
Instrument panel compartment, locking and front door map pockets	S	S
Seatback pockets (with Custom Trim B20)	A	A
Visors, pocketed	S	A
Sunroof, power, glass (includes rearview mirror with dual reading lamps)	A	A
Trip computer	A	A
Turn signal reminder	S	S

Exterior Dimensions



Option Groups

Some available options may require additional equipment. See your dealer for details.

	SE Sedan	
	1SB	1SC
RPQ	■	■
K34 Cruise control	■	■
DD2 Mirrors, dual visor vanity, covered	■	■
UN6 Radio, Delco 2001 Series AM/FM stereo with cassette	■	■
C49 Defogger, electric rear window	■	■
A90 Deck lid release	■	■
DG7 Mirrors, Sport, LH power, RH power convex	■	■
B37 Mats, front and rear floor	A	■
ACT/AC3 Power seat, driver 6-way	A	■
JL9 Anti-lock power brakes	A	■
AU0 Remote keyless entry	A	■
UK3 Steering wheel radio controls; includes Leather Appointment Group	A	■
US7 Power antenna	A	■

Mechanical

	SE Coupe	SE Sedan
Battery, Delco Freedom II	S	S
Brakes, 4-wheel disc	S	S
Anti-lock braking system (ABS), 4-wheel	A	A
California/New York emissions requirements	A	A
Cellular phone wiring (with Delco DE B20 phone only)	A	A
Engine block heater	A	A
Engines/Transmissions: 3.1 liter 3100 SFI V6 with electronically controlled 4-speed automatic	S	S
3.4L DOHC V6 with electronically controlled 4-speed automatic	A*	A*
Dual exhaust system, included in GT Package on Sedan; included in B4U Special Edition Coupe Package, GTP Coupe (B4S) (available on SE)	A	A
Exhaust system, stainless steel	S	S
Extensive anti-corrosion protection	S	S
Front-wheel drive	S	S
GM Computer Command Control	S	S
Steering, power rack-and-pinion	S	S
Suspension: Four-wheel independent, MacPherson strut front, Tri-link design rear	S	S

S = Standard A = Available — = Not available
⁽¹⁾ Tire chains should not be used. They may cause damage. See Owner's Manual.
⁽²⁾ Only available and required with 3.4L DOHC V6. ⁽³⁾ Produced in U.S., Canada or Mexico.
 *Requires Sport suspension, P225/60R16 Goodyear Eagle GT+4 tires, 16" wheels (NWO).

Interior Dimensions

Coupe	Headroom, f/r:	37.8/36.6"
	Legroom, f/r:	42.3/34.8"
	Shoulder room, f/r:	57.3/57.3"
	Hip room, f/r:	52.0/53.3"
	Trunk:	14.9 cu. ft.
Sedan	Headroom, f/r:	38.6/37.7"
	Legroom, f/r:	42.4/36.2"
	Shoulder room, f/r:	57.2/57.4"
	Hip room, f/r:	53.1/54.3"
	Trunk:	15.5 cu. ft.

Specifications

Engine/drive:	Front engine, front-wheel drive
Curb weight:	3189 to 3448 lbs.
Fuel capacity:	16.5 gal.

	SE Sedan	
	1SB	1SC
K34 Cruise control	■	■
DD2 Mirrors, dual visor vanity, covered	■	■
UN6 Radio, Delco 2001 Series AM/FM stereo with cassette	■	■
C49 Defogger, electric rear window	■	■
A90 Deck lid release	■	■
DG7 Mirrors, Sport, LH power, RH power convex	■	■
B37 Mats, front and rear floor	A	■
ACT/AC3 Power seat, driver 6-way	A	■
JL9 Anti-lock power brakes	A	■
AU0 Remote keyless entry	A	■
UK3 Steering wheel radio controls; includes Leather Appointment Group	A	■
US7 Power antenna	A	■

■ = Included in option group A = Available as a separate option

Exterior Colors

See dealer for model/color availability.



SUNBIRD





Standard equipment on every Sunbird includes:

Front-wheel drive

Four-wheel anti-lock brakes

Fuel-injected 4- or 6-cylinder engines (depending on model)

Automatic power door locks

The services of **Pontiac Cares**

At left, Sunbird SE Coupe in Black with 15" Star aluminum wheels.

Below left, Sunbird LE Coupe in Brilliant Blue Metallic with 14" custom wheel covers.

Below right, Sunbird LE Sedan in Bright Aqua Metallic with 15" Crosslace wheel covers.

Preceding pages, Sunbird LE convertible in Bright White with the W25 Special Appearance Package that includes special decals, white interior trim and wide touring tires mounted on Bright White 15" Star aluminum wheels.



All the car you need...in the convenient sporty economy size.

In need of on-road top-down fun? Sunbird LE Convertible is the answer. Or do you require a roomy rear seat and styling that has Pontiac written all over it? Sunbird LE Sedan is made to fill that specific order.

But perhaps your needs call for a sporty coupe. Sunbird offers up the LE and the V6-powered SE.

Regardless of your primary automotive needs, Sunbird responds with a fuel-injected four- or six-cylinder



engine (depending on model), standard front-wheel drive and four-wheel anti-lock brakes. Front-wheel drive delivers excellent traction on almost any road, and the electronic anti-lock braking system (ABS) provides en-

hanced stopping performance and control, especially on slick pavement where traction is low.

Any car you choose should also meet the needs of its occupants. Sunbird does, with standard door

locks so "intelligent," they lock themselves when a manual-transmission-equipped car moves forward at faster than eight mph or when an automatic-transmission-equipped car is shifted out of Park.

As if meeting these basic needs weren't enough, every Sunbird model gives drivers the security of the comprehensive customer satisfaction services of **Pontiac Cares** (see pages 4-5 for details).



Standard equipment on every Sunbird interior includes:

Delco AM/FM stereo

Automatic power door locks

Illuminated entry

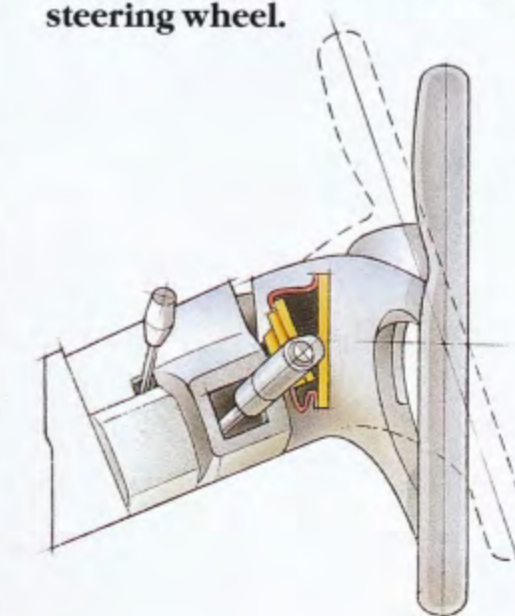
Front console

Self-aligning steering wheel

Energy-absorbing steering column

At left, Sunbird's instrument panel.

Below, Sunbird's self-aligning steering wheel.



Shift into something more exciting.

lots of practical cars are acceptable looking on the outside. But how many are really exciting on the *inside*? Sunbird is. Just take a look.

Sunbird puts every driving function at your fingertips while putting you in command of a driving audio-entertainment center. The standard sound system is an electronically tuned Delco AM/FM stereo, to which you can add the ability to play either cassettes or compact discs.

Adjacent to the stereo, and behind the four-spoke steering wheel, are instruments that are easy to read and controls that are easy to reach (as demonstrated by the fingertip access to the

lights and wipers). From here, driving excitement is easy to manage.

Sunbird also provides drivers with a full complement of safety and security features that make themselves evident before you even open the door. By lifting the driver's door handle, the illuminated entry system brightens a dark interior. With automatic-transmission-equipped models, the brake/transmission shift interlock prevents drivers from shifting out of Park without their foot being firmly on the brake pedal. Plus, Coupes and Sedans feature rear-seat safety-belt comfort guides for children who have outgrown available child restraints.



It's got the moves you're looking for, even when others aren't looking.

Standard equipment on every Sunbird includes:

Four-wheel anti-lock brakes

Fuel-injected 4- or 6-cylinder engine (depending on model)

Front-wheel drive

Brake/transmission shift interlock on automatic-equipped models

Rack-and-pinion power-assisted steering

At left, Sunbird's four-wheel anti-lock brakes give drivers an extra margin of steering control in emergency maneuvers.

At right, Sunbird's available 3.1 liter V6 engine.

There are some things in life you can count on...like other drivers who aren't paying attention to what they're doing. Pontiac has equipped Sunbird to help counter such situations, and others like them.

The trick in dealing with the unexpected is in the ability to avoid trouble once it's noticed. With standard four-wheel anti-lock brakes, Sunbird gives drivers all the steering control that the road surface allows, even during hard braking maneuvers.

Steering action is accomplished via a power-assisted rack-and-pinion steering gear that telegraphs valuable road-feel to the driver's fingertips. The feel is direct and the response is immediate.

For getting around town, around trouble, or around a stodgy motor home, Sunbird LE models service drivers with a 110-horsepower fuel-injected four-cylinder engine. A sporty-feeling 5-speed manual is standard with a 3-speed automatic transmission available as an option.

For those who like more in the way of power, there's the 3.1 liter V6. Its 140 horses are standard on the SE Coupe and available on other models. With multi-port fuel injection and a sophisticated distributorless ignition system, the V6 gives you the power you need to make the moves you want, when you want.

Power from both engines flows to the front wheels for maximum trac-

tion regardless of road surface. By having the weight of the drivetrain over the front wheels, the tires have more grip to pull the car up to speed: a benefit that's especially noticeable on wet or snow-covered pavement.

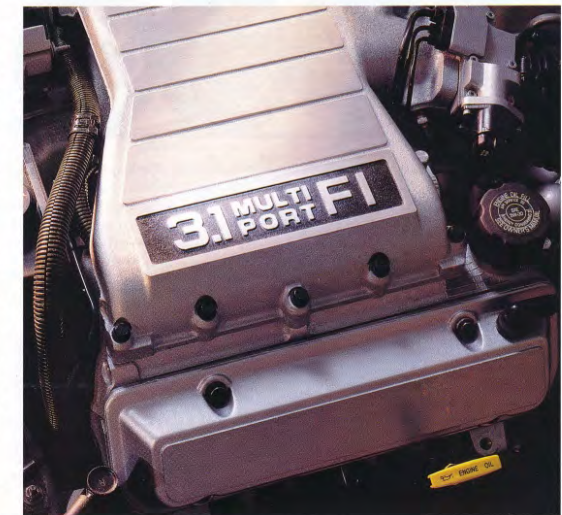
Controlling body motion is a specially tuned suspension with MacPherson struts up front and coil springs at the rear. Road imperfections

are smoothed out while handling performance is what you'd expect from a car wearing the Pontiac name.

All-season radials are standard, specially selected to match Sunbird's handling capabilities. LE Coupes and Sedans ride on 185/75R14 tires while the LE Convertible and SE Coupe get lower and wider 195/65R15 touring tires as standard equipment.

	2.0 liter 4-cyl.	3.1 liter V6
LE	S	A
SE	-	S
Horsepower	110 @ 5200 rpm	140 @ 4200 rpm
Torque (ft-lbs)	124 @ 3600 rpm	185 @ 3600 rpm
5-speed Manual	S	S
3-speed Automatic	A	A

S = Standard A = Available -- = Not available



Key Features at a Glance Shown in Red



Pontiac Cares

Pontiac backs every 1994 Sunbird with the following services. See pages 4-5 of this catalog for additional details.

	LE Coupe	LE Sedan	SE Coupe	LE Convertible
Extensive 3-year/36,000-mile no-deductible limited warranty	S	S	S	S
24-hour Roadside Assistance that provides in an emergency:				
Free lock-out assistance	S	S	S	S
Free dead-battery assistance	S	S	S	S
Free out-of-fuel assistance	S	S	S	S
Free flat-tire change	S	S	S	S
Courtesy Transportation	S	S	S	S

Exterior Features

Special Appearance Package (W25): Available with Brilliant Blue Metallic, Dark Purple Metallic, Bright White, Bright Red, Bright Aqua Metallic or Black exterior with Bright White top, Bright White vinyl interior, white 15" Star cast aluminum wheels, P195/65R15 BSW touring tires, color-keyed bodyside moldings and decals on doors, front and end panels.

	LE Coupe	LE Sedan	SE Coupe	LE Convertible
Aero extensions	-	-	S	-
Antenna, fixed mast (black)	S	S	S	S
Bumpers, soft fascia type with integral rub strips	S	S	S	S
Convertible top with electrohydraulic operation and glass backlight	-	-	-	S
Glass, Soft-Ray tinted	S	S	S	S
Headlamps: Composite halogen	S	S	S	S
Fog lamps	-	-	S	-
Partially hidden design	-	-	S	-
Mirrors, Sport, LH remote, RH manual	S	S	S	S
Moldings: Bodyside, wide body color	S	S	-	S
Bodyside, narrow body color with composite aero extensions	-	-	S	-
Spoiler, rear deck lid (Coupe and Convertible only)	A	-	S	S
Tires (steel-belted radial): P185/75R14 blackwall, all-season (QFE)	S	S	-	-
P195/65R15 blackwall, touring (QPD) available with FE2 suspension ⁽¹⁾	A	A	S	S
Compact spare	S	S	S	S



Wheels/Wheel Covers:

	LE Coupe	LE Sedan	SE Coupe	LE Convertible
A Custom 14" bolt-on wheel covers (P08)	S	S	-	-
B Hi-Tech turbo aluminum wheels (N78) with locking package, requires OME tires and includes FE2 suspension	A	A	-	-
C 15" Crosslace wheel covers require P195/65R15 touring tires (PG1)	A	A	S	S
D Star 15" cast aluminum wheels (PF7) with locking package, requires QPD tires and includes FE3 suspension	A	A	A	A

Windshield wipers: Fluidic
Controlled-cycle

	LE Coupe	LE Sedan	SE Coupe	LE Convertible
Fluidic	S	S	S	S
Controlled-cycle	A	A	A	S

Interior Features

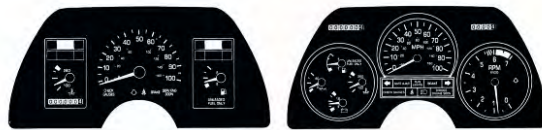
	LE Coupe	LE Sedan	SE Coupe	LE Convertible
Acoustical insulation, extensive	S	S	S	S
Air conditioning, custom	A	A	A	A
Armrest, front seat, includes storage bin	A	A	A	S

Interior Features (continued)

	LE Coupe	LE Sedan	SE Coupe	LE Convertible
Console, front floor	S	S	S	S
Cruise control	A	A	A	A
Deck lid release	A	A	A	A
Defogger: Electric rear window	A	A	A	A
Side window	S	S	S	S
Door locks, power, automatic with relock/unlock feature	S	S	S	S
Fabric: Grid cloth interior	S	S	S	S
Ventura vinyl with perforated inserts (white)	-	-	-	A

Instrumentation:

	LE Coupe	LE Sedan	SE Coupe	LE Convertible
E Analog speedometer, coolant temperature, fuel and trip odometer	S	S	-	S
F Analog speedometer, odometer, tachometer, coolant temperature, oil pressure indicator, voltmeter and trip odometer (included with V6 engine)	A	A	S	A



Lights: Ashtray, dome, glove box, trunk, instrument panel courtesy and headlamp "on" warning

	LE Coupe	LE Sedan	SE Coupe	LE Convertible
Illuminated entry	S	S	S	S
Rear quarter courtesy (Convertible only)	-	-	-	S
Luggage compartment trim, fully carpeted	S	S	S	S
Luggage compartment convenience net	A	A	A	A
Mats, carpeted front and rear floor	A	A	S	A
Mirrors: Day/night rearview	S	S	S	S
Visor vanity, RH and LH covered	-	-	S	S
Power Convertible top switch	-	-	-	S
Power windows with driver's "express-down" feature (requires armrest)	A	A	A	S



Radios:

	LE Coupe	LE Sedan	SE Coupe	LE Convertible
G Delco ETR AM/FM stereo with seek/scan and clock (UM7)	S	S	S	S
H Delco ETR AM/FM stereo with auto-reverse cassette (UN6)	A	A	A	A
I Delco ETR AM/FM stereo with compact disc player (U1C)	A	A	A	A

Safety belts, lap and shoulder, passive, driver and front passenger

	LE Coupe	LE Sedan	SE Coupe	LE Convertible
Standard	S	S	S	S
Rear-seat safety belt child comfort guide	S	S	S	-

Seats, front: Passenger "easy-entry" (Coupe and Convertible)


	LE Coupe	LE Sedan	SE Coupe	LE Convertible
Standard	S	-	S	S
Reclining front bucket	S	S	S	S

Seats, rear: Two-passenger

	LE Coupe	LE Sedan	SE Coupe	LE Convertible
Standard	-	-	-	S
Three-passenger	S	S	S	-

Interior Features (continued)

	LE Coupe	LE Sedan	SE Coupe	LE Convertible
Steering wheel:				
J Deluxe urethane four-spoke with self-aligning safety feature	S	S	S	S
Tilt-Wheel adjustable steering column	A	A	A	A



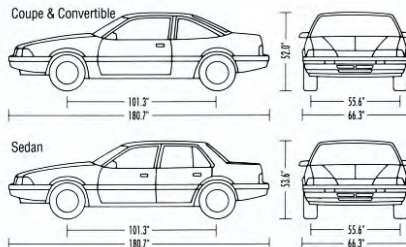
Storage: Front center console

	LE Coupe	LE Sedan	SE Coupe	LE Convertible
Standard	S	S	S	S
Instrument panel compartment (locking on Convertible) and front door map pockets	S	S	S	S

Sunroof, removable glass

	LE Coupe	LE Sedan	SE Coupe	LE Convertible
Standard	A	-	A	-

Exterior Dimensions



Option Groups

Some available options may require additional equipment. See your dealer for details.

	LE Coupe/Sedan 1SB	1SC	SE Coupe 1SA	1SB	1SC	LE Convertible 1SA	1SB
RPO							
N33 Tilt-Wheel adjustable steering column	■	■	■	■	■	■	■
CD4 Controlled-cycle wipers	■	■	■	■	■	■	■
C60 Air conditioning	■	■	■	■	■	■	■
DO6 Armrest, front seat, includes storage bin	■	■	■	■	■	■	■
A59 Deck lid release	■	■	■	■	■	■	■
UN6 Radio, AM/FM stereo with cassette	■	■	■	■	■	■	■
K34 Cruise control	■	■	■	■	■	■	■
AM9 Split-folding rear seat	■	■	■	■	■	■	■
T43 Spoiler, rear deck lid (not available on Sedan)	■	■	S	S	S	S	S
AP9 Convenience net	■	■	■	■	■	■	■
A31 Power windows with driver's "express-down" feature	■	■	■	■	■	■	■

Mechanical

	LE Coupe	LE Sedan	SE Coupe	LE Convertible
Brakes: Power disc/drum	S	S	S	S
Anti-lock braking system (ABS), 4-wheel	S	S	S	S
Brake/transmission shift interlock safety feature (with automatic transmission)	S	S	S	S
California/New York emissions requirements	A	A	A	A
Engine block heater	A	A	A	A
Engines: 2.0 liter OHC 4-cylinder with multi-port fuel injection⁽²⁾	S	S	-	S
3.1 liter V6 with multi-port fuel injection ⁽³⁾	A	A	S	A
Exhaust system, stainless steel	S	S	S	S
Extensive anti-corrosion protection	S	S	S	S
GM Computer Command Control	S	S	S	S
Oil level indicator	S	S	S	S
Stabilizer bar: Front (24mm)	S	S	S	-
Rear (21mm)	-	-	-	S
Steering, power rack-and-pinion	S	S	S	S
Suspension, MacPherson strut front, full coil rear	S	S	S	S
Transmissions: 3-speed automatic	A	A	A	A
5-speed manual with overdrive	S	S	S	S

S = Standard A = Available - = Not available
⁽¹⁾ Tire chains should not be used. They may cause damage. See Owner's Manual.
⁽²⁾ Produced in Brazil or Australia. ⁽³⁾ Produced in U.S., Canada or Mexico.

Interior Dimensions

Model	Headroom, f/r:	Legroom, f/r:	Shoulder room, f/r:	Hip room, f/r:	Trunk:
Coupe	37.8/31.6"	42.2/31.2"	53.3/52.8"	47.9/49.6"	12.6 cu. ft.
Sedan	38.8/37.4"	42.2/33.0"	53.0/53.2"	47.7/49.2"	13.0 cu. ft.
Convertible	38.7/37.3"	42.9/31.2"	53.3/38.2"	47.9/38.2"	10.4 cu. ft.

Specifications

Engine/drive:	Front engine, front-wheel drive
Curb weight:	2487 to 2862 lbs.
Fuel capacity:	15.2 gal.

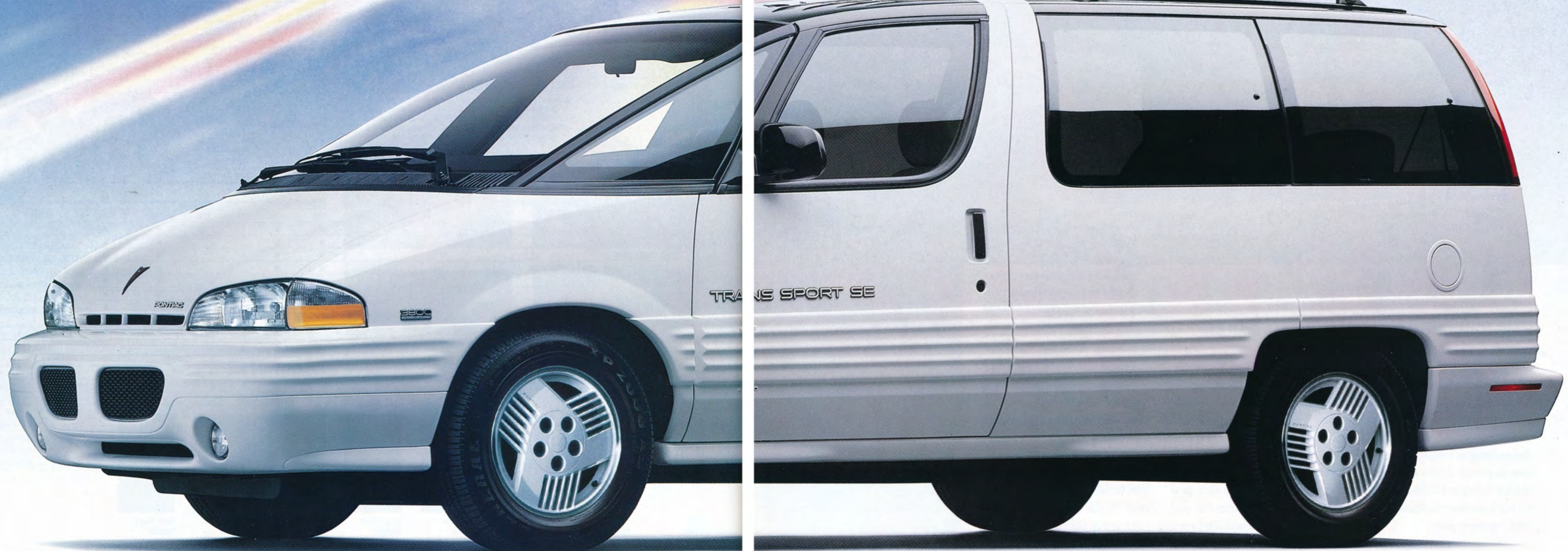
■ = Included in option group S = Standard - = Not available

Exterior Colors

See dealer for model/color availability.



TRANS SPORT





The transformation of transportation.

From the moment it first arrived on the automotive scene, Trans Sport has been getting noticed. For 1994, Trans Sport gets even better, with an evolutionary design change in keeping with its mission: to provide drivers with a minivan that's sleek and multi-functional, yet still looks like nothing else on the road, coming or going.

It all begins with the styling—it's bold and practical. Only Trans Sport offers Pontiac's patented formula for style, driving excitement and control in a package that includes over 112 cubic feet of interior cargo capacity. Supporting the exterior's slick, new-for-'94 shape is a fortress-like steel safety cage fitted with smoothly formed

polymer body panels that make rust holes obsolete and offer a resilient defense against the ravages of runaway grocery carts.

Next is engineering, led by V6 power (two engines to choose from), front-wheel-drive traction (with electronic Traction Control, available mid-year), and enhanced steering control

and braking stability provided by standard four-wheel anti-lock brakes.

This practical and advanced engineering also makes for a comfortable interior—one that delivers a commanding view of the road but is easy to step into. And as you might expect from a minivan of the '90s, a driver airbag is standard.



Standard equipment on every Trans Sport includes:

- Driver airbag
- Four-wheel anti-lock brakes
- V6 power

Shown, Trans Sport in Bright Aqua Metallic with 15" Styled wheel covers.

Preceding pages, Trans Sport SE in Bright White with available 15" aluminum wheels.



Trans Sport: Convenience at your fingertips.

Standard equipment on every Trans Sport includes:

Up to 112.6 cubic feet of cargo volume with rear seat(s) removed

Side-door guard beams

Rustproof body panels

At left, Trans Sport with available remote-control power sliding door/keyless entry. See your dealer for safe operating procedures.

Trans Sport's available rear seats are lightweight and easily removable (upper right), as well as multi-functional (near right), and easily stowable (bottom).

From innovative electronics to everyday versatility, Trans Sport offers automotive design solutions that accomplish what you need *and* want.

For instance, how about being able to unlock and open the sliding door on Trans Sport without ever touching the door handle? Simply press the button on the available remote keyless entry fob, or the one on the overhead console, or the one inside next to the sliding door, and the side door smoothly motors open. The available power sliding door may only be opened when the transmission is in Park and the doors are unlocked. Also, when closing, sensors automatically reverse the direction of the door if an obstruction is detected.

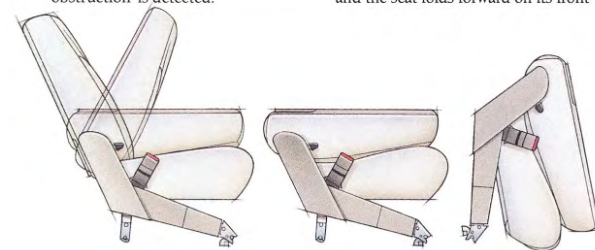
Furthermore, how about passenger- and cargo-carrying flexibility? Try this in a sedan, sport utility vehicle, or less-cleverly designed minivan: Carry up to seven adults in comfort, ferry five adults and a full complement of ski equipment, or haul home the wood for a weekend outdoor deck project. Name the task and Trans Sport provides the means to accomplish the ends with standard 5-passenger or optional 7-passenger seating.

The key to this flexibility is Trans Sport's available individual rear seats. With these modular bucket seats, simply flip one lever and the seat-back folds back to a table top, complete with cup holders. Flip another, and the seat folds forward on its front



mounts, freeing considerable floor space for additional cargo. Pull on a clearly marked bar, and the seat—weighing a light 32 pounds—can be easily removed. With hundreds of cargo-carrying variations, there's almost nothing you can't take with you.

Whatever you carry, you'll appreciate Trans Sport's available power automatic door locks. It's nice to know that when the transmission is shifted into Drive, all doors automatically lock, eliminating the need to remind passengers to "Lock your doors."





Standard equipment on every Trans Sport includes:

Driver airbag

Flexible interior seating/cargo carrying options

Abundant storage areas including:

- Lockable center storage area
- Large glove box
- Door map pockets
- Convenient cup holders

At right, available integrated child seat.

Below, Trans Sport's instrument panel.

At left, Trans Sport with available 7-passenger seating gives a whole new meaning to "riding the team bus."



It hauls cargo like a truck but drives like a Pontiac.

Round 'em up, load 'em up—Trans Sport will take on passengers and cargo like no ordinary minivan. And while it lets you take it all, it won't make you feel like you've got 18 wheels behind the driver's seat. Remember, first and foremost, Trans Sport is a Pontiac.

In road-car fashion, the 4-way adjustable driver's seat comfortably positions you above traffic and behind a driver airbag, with easy-to-reach controls and informative gauges.

If you choose, the steering wheel may also sport radio controls directly connected to a selection of impressive

Delco sound systems. Standard listening pleasure is provided by an electronically tuned AM/FM stereo with clock. Cassette and compact disc systems are available as options.

Additional equipment includes fog lamps, 4-way manual seat adjuster, controlled-cycle windshield wipers, generous storage possibilities and heat-repelling Solar-Ray glass. For rear seating comfort, a 3-person bench seat is standard (putting total passenger capacity at 5). In place of the removable bench, 5 modular bucket seats may be specified (7-passenger

seating), and this is just the beginning.

Up to two of the five buckets can be ordered with integral child seats. Using the integrated 5-point safety harness, the seats accommodate children up to 40 inches and 40 pounds. (Of course, the seats also comfortably hold adults.)

And Trans Sport's available glass sunroof, Tilt-Wheel adjustable steering column, rear air conditioning, leather seating surfaces and 6-way power driver's seat ensure that you'll never forget that Trans Sport is an extraordinary minivan.





Standard equipment on every Trans Sport includes:

Driver airbag

Four-wheel anti-lock brakes

Front-wheel drive

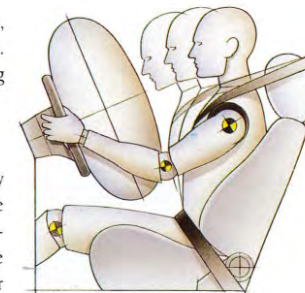
V6 power and automatic transmission

Shown, Trans Sport in Light Blue Metallic with 15" cast aluminum wheels.

At right, in moderate-to-severe front-end collisions, airbags inflate and deflate within a tenth of a second. For best protection, always wear safety belts, even with airbags.

How a van that looks this good delivers.

When you look as good as Trans Sport, you've got to be able to tow your own. Its looks promise a lot. Its engineering has to deliver.



Power Delivery

For Trans Sport, the power delivery begins under the hood with a choice of two engines. Standard is a fuel-injected 3.1 liter V6. It powers the front wheels with 120 horsepower that's ready to run. The optional 3800 3.8 liter V6 boosts output to 170, and, with the available towing package, enables Trans Sport to take to the road with up to 3,000 pounds of cargo and passengers in tow.

Automatic transmissions back both V6 engines: A four-speed automatic overdrive is standard on the 3800 V6 and a smooth-shifting three-speed is matched to the 3.1 liter V6.

Countering the thrust of the powertrain are four-wheel anti-lock brakes. This electronically controlled system anticipates brake-induced skids and then "pumps" the brakes at up to 15 times per second to help drivers steer around trouble while slowing down.

Further helping drivers in bad driving conditions is Trans Sport's Traction Control (available mid-year with the 3800 V6). With some of the weather Mother Nature can dish out, sometimes going can be as tricky as stopping. Traction Control handles the former like ABS addresses the latter. By reducing engine power and individually applying the brakes to the front

wheel that has lost traction, Traction Control helps drivers accelerate on slick roads. The benefits: the confidence of knowing you have the best traction advanced technology can provide, on any road and in any weather. Features like these truly help put the driver in control.

Safety Delivery

Combine the active safety features of ABS and front-wheel drive with a standard driver airbag,* available automatic power door locks and side-door guard beams, and Trans Sport gives you impressive safety coverage. Even special self-sealing tires are available.

Binding these features together as an integrated unit is an all-steel safety cage built on top of a strong ladder frame. Inherently strong, the safety-cage design includes a large front crush zone to help diffuse the energy during strong frontal impacts. Safety all around. That's precisely what Pontiac Trans Sport delivers to drivers and passengers alike.

*Always wear safety belts, even with airbags.

	3.1 liter V6 3-speed automatic	3.8 liter V6 4-speed automatic
Trans Sport	S	A
Horsepower	120 @ 4400 rpm	170 @ 4800 rpm
Torque (ft.-lbs)	175 @ 2200 rpm	225 @ 3200 rpm

S = Standard A = Available

Key Features at a Glance Shown in Red



Pontiac Cares
Pontiac backs every 1994 Trans Sport with the following services. See pages 4-5 of this catalog for additional details.

	Trans Sport SE
Extensive 3-year/36,000-mile no-deductible limited warranty	S
24-hour Roadside Assistance that provides in an emergency:	
Free lock-out assistance	S
Free dead-battery assistance	S
Free out-of-fuel assistance	S
Free flat-tire change	S
Courtesy Transportation	S

Exterior Features

Antenna, integrated roof	S
Bumpers, soft fascia type with integral rub strips	S
Center high mounted stop lamp	S
Composite body panels that resist dents, dings and rust	S
Glass: Heat-repelling, solar-coated glass windshield	S
Rear flip-out side glass windows (4 windows)	S
Soft-Ray tinted	S
Deep-tinted Solar Gray side glass	A
Headlamps: Composite halogen	S
Fog lamps, integral, round	S
Luggage rack	A
Mirrors: LH remote, RH manual with fold-and-stow feature	S
Sport, LH and RH power	A
Moldings and appearance:	
Black roof treatment	S
Black roof delete option	A
Lower aero molding	S
Monotone paint theme	S
Power sliding door with remote open/close feature (requires power door locks and lamp group)	A
Rear liftgate: With "hidden-handle"	S
With 2-speed washer/wiper	S
Step-in height (18")	S
Tires (steel-belted radial): P205/70R15 blackwall, all-season (XGY)	S
P205/70R15 blackwall, all-season touring (XIN)	A
15" touring, self-sealing (P42)	A
Compact spare with hoist cable	S
Trailer provisions (requires 3800 engine, automatic level control, heavy-duty cooling and 15" touring tires)	A



A B C

Wheels/Wheel Covers:	
A Bolt-on wheel covers, 15" (PG1)	S
B Sport cast aluminum wheels, bright-faced 15" (requires touring tires) (V2C)	A
C 15" Sport cast aluminum wheels, color-keyed, 15"-standard with Beige and White exteriors (requires touring tires) (PH3)	A
Windshield wipers: "Wet-arm"	S
Controlled-cycle	S

Interior Features

	Trans Sport SE
Acoustical insulation, "quiet package"	S
Airbag, driver's side	S
Air conditioning: Front	A
Rear air conditioning, heating and ventilation (requires automatic level control, deep tinted glass)	A
Cruise control	A
Defogger: Electric rear window	A
Side window	S
Door locks, power (includes automatic locking doors)	A
Fabric: Millweave cloth	S
Prado leather seating areas with perforations (7-passenger seating only)	A



D

Instrumentation:	
D Analog speedometer, odometer, tachometer, coolant temperature, oil pressure indicator, voltmeter and trip odometer	S
Keyless entry system, remote (requires power door locks)	A
Lights: Doorway	S
Glove box lamp	S
Headlamp-on warning with tone	S
Instrument panel lamps	S
Middle and rear dome lamps	S
Lamp group (TR9) with consolette	S
Liftgate cargo lamps	S
Luggage compartment convenience net (included with 7-passenger seating)	A
Mats, front and rear floor	S
Mirrors: Day/night rearview	S
Visor vanity, RH and LH covered	S
Power windows with driver's "express-down" feature	A



E



F



G



H

Radios:	
E Delco ETR AM/FM stereo with clock (UM7)	S
F Delco ETR AM/FM stereo with seek up/down, auto-reverse cassette and clock (UM6)	A
G Delco ETR AM/FM stereo with seek up/down, auto-reverse cassette with search and replay features, 5-band graphic equalizer, clock, redundant steering wheel controls and leather-wrapped steering wheel (UX1)	A
H Delco ETR AM/FM stereo with seek up/down, compact disc player, 5-band graphic equalizer, clock, redundant steering wheel controls and leather-wrapped steering wheel (U1A)	A
Safety belts, lap and shoulder, driver and front passenger	S
Rear-seat, lap and shoulder; all outboard positions	S
Seats: Front buckets with headrest, recline feature and armrest; 5-passenger capacity (2nd row bench)	S
7-passenger seating (2-3-2) (includes convenience net)	A
4-way manual seat adjuster (driver-side)	S
Integral child seat (1 or 2)	A
Power driver's, 6-way	A

Interior Features (continued)	Trans Sport SE
Steering wheels:	
I Sport, four-spoke steering wheel with airbag	S
J Leather-wrapped steering wheel with radio controls (ordered with UX1 or U1A radios)	A
Tilt-Wheel adjustable steering column	A

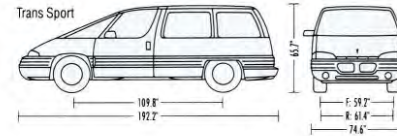


I

J

Storage: Cup and mug holder tray with coin holder - center instrument panel lower console, front and side door map pockets	S
Lockable under-dash storage	S
Upper instrument panel, covered	S
Lower instrument panel, glove box	S
Mesh net front seatback pockets	S
Rear quarter lower, left, closed storage	S
Rear quarter lower, right, jack storage	S
Rear quarter upper, open storage with cup holder	S
Saddle bag storage (included with electronic load leveling)	A
Sunroof, glass	A

Exterior Dimensions



Option Groups

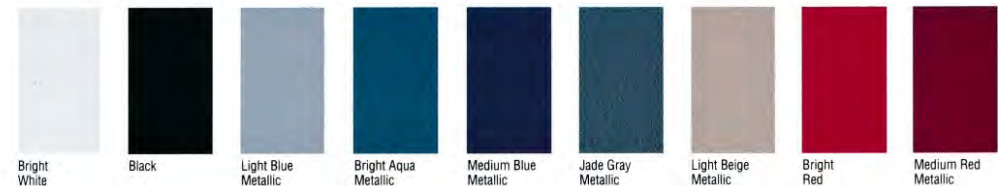
Some available options may require additional equipment. See your dealer for details.

RPQ	Trans Sport SE			
	1SB	1SC	1SD	1SE
C67 Air conditioning, front	■	■	■	■
N33 Tilt-Wheel adjustable steering column	■	■	■	■
K34 Cruise control	■	■	■	■
UM6 Delco ETR AM/FM stereo with seek up/down, auto-reverse cassette and clock	■	■	■	UX1
DD9 Mirrors, LH and RH power remote with "fold and stow" feature	■	■	■	■
AJ1 Glass, deep-tinted	■	■	■	■
AB5 Door locks, power	■	■	■	■
C49 Defogger, electric rear window	■	■	■	■
A31 Power windows with driver's "express-down" feature (requires power lock AB5)	■	■	■	■
ZP7 7-passenger seating (2-3-2) and convenience net	■	■	■	■
AG9 Power seat (driver's 6-way)	■	■	■	■
AU0 Remote keyless entry	■	■	■	■
V54 Luggage rack with saddle bags	■	■	■	■
UX1 AM/FM cassette with 5-band graphic equalizer, redundant steering wheel controls and leather-wrapped steering wheel	■	■	■	■
G67 Electronic load leveling (requires touring tires)	■	■	■	■
P42 15" steel-belted radials, touring tires, self-sealing (included in XIN touring tires)	■	■	■	■
PH3 15" Sport cast aluminum wheels, color-keyed (requires touring tires)	■	■	■	■

■ = Included in option group

Exterior Colors

See dealer for model/color availability.



Bright White

Black

Light Blue Metallic

Bright Aqua Metallic

Medium Blue Metallic

Jade Gray Metallic

Light Beige Metallic

Bright Red

Medium Red Metallic

Mechanical

	Trans Sport SE
Battery, Delco Freedom II	S
Brakes: Power disc/drum, anti-lock braking system (ABS), 4-wheel	S
California/New York emissions requirements	A
Electronic load leveling (requires touring tires and includes rear saddle bags)	A
Engine block heater	A
Engines/Transmissions: 3.1 liter V6 with 3-speed automatic ⁽¹⁾	S
3800 3.8 liter V6 with 4-speed automatic	A
Engine coolant recovery system	S
Exhaust system, stainless steel	S
Frame: Ladder type underbody design with full-length longitudinal rails and supporting crossmembers	S
Spaceframe construction	S
Front-wheel drive	S
Fuel tank, high-density polyethylene with 20-gallon capacity	S
GM Computer Command Control	S
Steering, power rack-and-pinion	S
Suspension: Fully independent MacPherson strut front	S
Trailing axle rear	S
Traction Control (requires 3800 engine L27)	A

S = Standard A = Available - = Not available
⁽¹⁾ Produced in U.S., Canada or Mexico.

Interior Dimensions

Seats	Headroom, f/m/r:	39.2/39.0/37.8"
	Legroom, f/m/r:	40.1/36.1/36.8"
	Shoulder room, f/m/r:	60.6/59.2/62.2"
	Maximum cargo capacity (seats removed):	112.6 cu. ft.

Specifications

Engine/drive:	Front engine, front-wheel drive
Curb weight:	3540 to 3707 lbs.
Fuel capacity:	20.0 gal.



At left, a Bonneville performs an evasive maneuver at a General Motors test facility.

At right, in moderate-to-severe front-end collisions, airbags inflate and deflate within a tenth of a second. For best protection, always wear safety belts, even with airbags.

The chart, below right, clearly highlights Pontiac's dedication and commitment to safety throughout its model lineup.

Pontiac: Taking safety seriously.

When you understand that cars and minivans carry people, there is only one product attribute that can be the most important: safety. But how does this priority prove itself in today's Pontiacs?

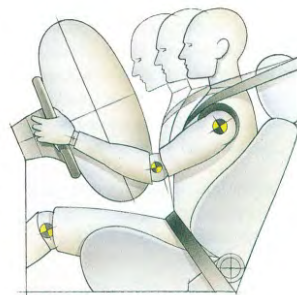
Pontiac directly benefits from General Motors decades of industry-leading safety research and testing. No other auto manufacturer, foreign or domestic, has crash-tested more cars, invested more money, and given away more safety-related patents to the automotive community than GM.

As GM's performance division, this research contributes to new products and technology that make today's Pontiacs as safe as they are.

Pontiac's safety features are separated into two groups:

- Those that help drivers avoid accidents, and
- Those that protect occupants in the event of a collision.

The first group, often called "active" safety features, is a Pontiac hallmark. Pontiac's long-standing engineering and design philosophy is to keep the driver in control, because only a driver can anticipate a dangerous situation and react to it. Pontiac strives to provide vehicles that will respond to a driver's command, especially in an emergency evasive maneuver.



ABS and Traction Control

To this end, sophisticated and effective four-wheel anti-lock braking systems (ABS) are standard or available on every Pontiac. ABS, by preventing the wheels from locking, gives more steering control on slippery roads and while avoiding an accident.

Traction Control and 2nd-gear start are two other features that can help drivers. A fully integrated Traction Control system that helps increase traction on the slickest roads is avail-

able on all Bonneville models (available mid-year on Trans Sport and Firebird models).

A variation of Traction Control is 2nd-gear start. When engaged by the driver, it starts the vehicle in 2nd gear and sends less power to the drive wheels, helping prevent wheel spin. Especially designed for those drivers who contend with snowy or wet roads, 2nd-gear start is available on Firebird and standard on Grand Prix.

continued next page

Driver-in-control features

	Firebird	Grand Am	Bonneville	Bonneville SSE	Grand Prix	Sunbird	Trans Sport
4-wheel anti-lock brakes (ABS)	S	S	S	S	A	S	S
Electronic Traction Control	A ²	-	A	A	-	-	A ³
2nd-gear start	A ⁴	-	-	-	S	-	-
Responsive fuel-injected engine	S	S	S	S	S	S	S
Variable-effort steering	-	-	A	S	-	-	-
4-wheel independent suspension	-	-	S	S	S	-	-
Steering wheel radio controls	A, S ¹	-	A	S	A, S ¹	-	A
Head up instrument display	-	-	-	A	A	-	-
Automatic door locks w/unlock and re-lock	-	S	-	-	S	S	A ⁶
Remote keyless entry	A, S ¹	A	A	A	A	-	A
Illuminated entry	A, S ¹	S	A	S	S	S	A
Fog lamps	S ²	S	S	S	S	S ⁵	S

Occupant protection features

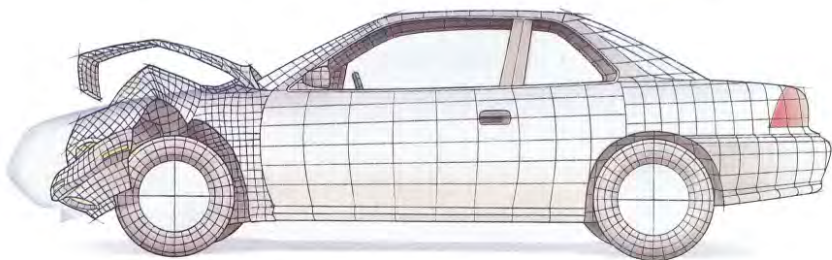
Driver's side airbag	S	S	S	S	S	-	S
Driver and passenger front airbags	S	-	S	S	S	-	-
Front and rear manual lap and shoulder belts	S	-	S	S	S ⁴	-	S
Passive safety belts, automatic	-	S	-	-	S ⁷	S	-
Self-aligning steering wheel	-	-	-	-	-	S	-
Energy-absorbing steering column	S	S	S	S	S	S	S
Brake shift/transmission interlock, automatic	S	S	S	S	-	S	-
Rear-seat child door locks (sedans)	-	S	S	S	-	-	S
Side-door guard beams	S	S	S	S	S	S	S
Crush-initiators on hood and deck lid	S	S	S	S	S	S	S
Laminated safety glass windshield	S	S	S	S	S	S	S
High-mounted stop/brake lamp	S	S	S	S	S	S	S
Speed-rated tires	A	-	-	A	-	-	-

S = Standard A = Available - = Not Available
¹ = Standard Trans Am GT ² = Standard Trans Am and Trans Am GT ³ = Interim ⁴ = Firebird with 4-spd. automatic; N/A Formula, Trans Am, Trans Am GT
⁵ = Standard Sunbird SE ⁶ = Does not include unlock/re-lock ⁷ = Standard Grand Prix Coupe ⁸ = Standard Grand Prix Sedan

At right, every Pontiac is designed with crush zones that absorb much of the force, helping to leave the passenger capsule intact after impact.

Below right, Grand Am and Sunbird provide rear-seat comfort guides that make wearing safety belts more comfortable for children who have outgrown available child restraints.

Below left, remote keyless entry, available on all models but Sunbird, provides extra security.



Safety Belts and Airbags

Supporting every active feature are passive safety devices. These include restraint systems, body structure designs, and safety interior features.

Safety belts are still the best protection in the event of an accident. Safety belts help keep passengers secure in their seats, and this reduces the potential for injury. Airbags provide protection in moderate-to-severe frontal collisions, but are most effective when safety belts are used. This is why airbags are not a safety-belt replacement—only a supplement to the belts. Grand Am and Trans Sport provide the extra protection of driver airbags. Grand Prix, Bonneville, SSE and Firebird models feature driver and passenger airbags.

Inside, energy-absorbing steering columns work on the same principle as crush zones—they collapse to further

vital role in passenger safety. The body of every Pontiac works to absorb force during a collision, helping passengers to remain safe within the vehicle's integral safety cage. This safety cage forms a protective capsule around the passenger compartment. Specific front and rear areas are designated as crush zones, and they crumple predictably on impact, absorbing the energy a collision generates.

Inside, energy-absorbing steering columns work on the same principle as crush zones—they collapse to fur-

ther dissipate the force of an accident. Additionally, on many Pontiacs, safety interlocking door latches help keep doors safely shut during an impact. And now every Pontiac (except Grand Prix and Trans Sport) with an automatic transmission comes with a brake/transmission shift interlock to prevent accidental movement of the transmission from Park.

Personal Safety

Finally, Pontiac recognizes a category of safety that is neither active nor passive—personal safety. It's the reason illuminated entry is standard on Sunbird, Grand Prix and Grand Am, and available on all other Pontiacs. Remote keyless entry is another feature in this category. When ordered on any model (except Sunbird), it gives the driver the ability to lock or unlock vehicle doors without using the keys. This provides extra security, especially at night.

Pontiac's commitment to safety proves that Pontiac's attitude toward safety runs deep and is ever improving.



Pontiac Occupant Protection and Crash Avoidance Features.

Occupant Protection, Cars

- Automatic lap/shoulder safety belts, Sunbird. Automatic lap/shoulder safety belts and driver airbag, Grand Am. Automatic lap/shoulder safety belts and driver and passenger airbags, Grand Prix Coupe. Manual lap/shoulder safety belts and driver and passenger airbags, Firebird, Bonneville, Grand Prix (except Coupe).
- Manual lap safety belts, center seat positions.
- Manual lap/shoulder safety belts, outboard rear-seat positions.
- Energy-absorbing steering column.
- Energy-absorbing instrument panel.
- Folding front seatback locks, inertia type/manual, two-door models.
- Safety armrests.
- Breakaway inside rearview mirror.
- Security door locks and door retention components.
- Laminated windshield glass, urethane bonded.
- Head restraints, adjustable or integral, front or front/rear.
- Side-guard door beams.
- Passenger-guard inside door lock handles.
- Automatic door locking system, Sunbird, Grand Am, Grand Prix.
- Rear-door child-security locks, Grand Am, Bonneville.
- Self-aligning steering wheel on Sunbird.

Crash Avoidance, Cars

- Anti-lock brakes (four-wheel) standard Firebird, Grand Am, Bonneville, Sunbird. Anti-lock braking system optional on Grand Prix.
- Side marker lamps and reflectors.
- Parking lamps.
- Four-way hazard warning flashers.
- Back-up lamps.
- Directional signal control.
- Windshield defrosters, washer & multi-speed wipers.
- Inside day/night rearview mirror.
- Outside rearview mirrors.
- Center high-mounted stop lamp.

- Brake system with dual master cylinder plus warning light.
- Starter safety switch.
- Dual-action hood latch (front opening).
- Low-glare finish—inside windshield moldings, wiper arms and blades, metallic steering wheel surfaces.
- Illuminated heater and defroster controls.
- Illuminated windshield wiper and washer controls (when located on instrument panel).
- Tires with built-in tread wear indicators.

Theft Deterrence, Cars

- Visible vehicle identification number.
- Laser-etched VIN plate.
- Marked body parts (where applicable).
- Theft-deterrent steering column lock.
- PASS-Key personal security system, except Grand Am and Sunbird.
- Remote inside hood release.

Occupant Protection, Trans Sport

- Manual lap/shoulder safety belts, outboard front and rear-seat positions.
- Manual lap safety belts, center seat positions.
- Energy-absorbing steering column.
- Energy-absorbing instrument panel.
- Folding front seatback locks, inertia type.
- Safety armrests.
- Breakaway inside rearview mirror.
- Security door locks and door retention components.
- Laminated windshield glass, urethane bonded.
- Head restraints, front seats.
- Side-guard door beams.

Crash Avoidance, Trans Sport

- Side marker lamps and reflectors.
- Parking lamps.
- Four-way hazard warning flashers.
- Back-up lamps.
- Directional signal control.
- Center high-mounted stop lamp.
- Windshield defrosters, washer & multi-speed wipers.
- Brake system with dual master cylinder plus warning light.

- Outside rearview mirrors.
- Starter safety switch.
- Dual-action hood latch.
- Low-glare finish—inside windshield moldings, wiper arms and blades, metallic steering wheel surfaces, inside rearview mirror frame and bracket.
- Illuminated heater and defroster controls.
- Tires with built-in tread wear indicators.
- Anti-lock brakes (four-wheel).

Theft Deterrence, Trans Sport

- Visible vehicle identification number.
- Laser-etched VIN plate.
- Theft-deterrent steering column lock.
- Theft-deterrent key system (separate ignition key).
- Remote inside hood release.

A Word About...

This Catalog:

We have tried to make this catalog as comprehensive and factual as possible. We reserve the right, however, to make changes at any time, without notice, in prices, colors, materials, equipment, specifications, models and availability. Since some information may have been updated since the time of printing, please check with your Pontiac dealer for complete details.

Engines:

Pontiacs are equipped with engines produced by different operating units of GM, its subsidiaries or suppliers to GM worldwide.

The Assembly of Pontiacs:

Pontiacs are assembled by different operating units of General Motors, its subsidiaries or suppliers to GM worldwide. Pontiacs incorporate thousands of components produced by different operating units of GM, its subsidiaries or suppliers to GM worldwide. We sometimes find it necessary to produce Pontiacs with different or differently sourced components than originally scheduled. All such components have been approved for use in Pontiacs and will provide the quality of performance associated with the

Pontiac name. Since some options may be unavailable when your vehicle is assembled, we suggest you verify that your vehicle includes the equipment you ordered, or if there are changes, that they are acceptable to you.

Corrosion Protection:

Pontiacs are designed and built to resist corrosion. All body sheet metal components are warranted against rust-through corrosion for 6 years/100,000 miles. Application of additional rust-inhibiting materials is not required under the corrosion coverage and none is recommended.



Saving For Your Next Pontiac:

With The GM Credit Card, saving for your next Pontiac can be a lot easier. A full 5% of all you charge using either The GM Card or The GM Gold Card™ can add up to a sizable amount to be used toward a new Pontiac. Earn up to \$500 per year (\$3,500 over seven years) with The GM Card or up to \$1,000 per year (\$7,000 over seven years) with The GM Gold Card. You can earn up to 10% by using GM Card special partners. Call 1-800-8GM-CARD for an application today.



Pontiac supports World Cup Soccer and the active lifestyle of our customers.

PONTIAC, the PONTIAC EMBLEM, BONNEVILLE, GRAND AM, SUNBIRD, TRANS SPORT, FIREBIRD, ETR, SOFT-RAY, TWILIGHT SENTINEL, QUAD 4, FREEDOM and the GM EMBLEM are registered trademarks of the General Motors Corporation. THE WHEEL and GRAND PRIX are trademarks of the General Motors Corporation. PASS-Key is a registered trademark of the Delco Electronics Corporation.

GM ALWAYS WEAR SAFETY BELTS. EVEN WITH AIRBAGS. © 1993 GENERAL MOTORS CORPORATION. ALL RIGHTS RESERVED. LITHO IN U.S.A.



 PONTIAC