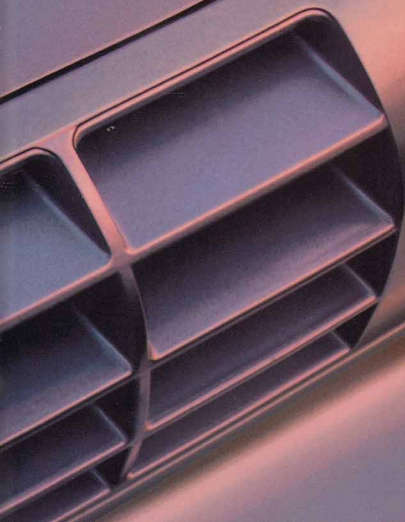


O l d s m o b i l e ▼ 1 9 9 1



FOR NEARLY A CENTURY, OLDSMOBILE HAS BEEN KNOWN FOR PRODUCTS THAT WERE TASTEFULLY DESIGNED, THOUGHTFULLY ENGINEERED AND SOLIDLY BUILT. CARS TO WHICH PEOPLE ASPIRED. THAT WERE WELL WORTH THE PRICE TO THOSE WHO OWNED THEM.

WHILE THIS STRONG HERITAGE CARRIES ON, OUR 1991 PRODUCTS HAVE BEEN INFUSED WITH FRESH THINKING TO MEET THE NEEDS OF TODAY'S CONTEMPORARY FAMILIES.

TODAY'S OLDSMOBILES OFFER A UNIQUE BLEND OF REFINED DESIGN, RESPONSIVE PERFORMANCE AND INNOVATIVE TECHNOLOGY, PROVIDING A BALANCE BETWEEN STEP-UP FEATURES AND VALUE. ALL OF WHICH MAKES OUR NEW GENERATION OLDSMOBILES SMART, CONTEMPORARY VEHICLES.

OF COURSE, FOR YOU TO FEEL SATISFIED THAT AN OLDSMOBILE IS A SMART CHOICE, WE HAVE TO DO MORE THAN JUST OFFER AN EXCEPTIONAL PRODUCT. AND THAT IS EVIDENCED BY BOTH OLDSMOBILE'S AND ITS DEALERS' DEDICATION TO YOUR COMPLETE SATISFACTION, THE GUARANTEE OF WHICH IS THE OLDSMOBILE EDGE—THE MOST COMPREHENSIVE OWNER SATISFACTION PROGRAM IN THE BUSINESS.

BECAUSE IN THE END, ALL THE THINGS THAT MAKE AN OLDSMOBILE AN OLDSMOBILE, WILL BE THE SAME THINGS THAT WILL MAKE YOU GLAD YOU BOUGHT ONE IN THE FIRST PLACE.

NINETY EIGHT ▶ ALL-NEW, TECHNOLOGICALLY ADVANCED, FULL-SIZE LUXURY FOUR-DOOR SEDAN.

4



TORONADO ▶ SOPHISTICATED PERSONAL LUXURY COUPE—AN UNCOMMON DRIVING EXPERIENCE.

14



EIGHTY EIGHT ROYALE ▶ CLASSICALLY STYLED, FULL-SIZE FAMILY CAR WITH SPACIOUS SEATING FOR SIX.

22



CUTLASS SUPREME ▶ CONTEMPORARY MID-SIZE CAR IN TWO OR FOUR DOORS AND CONVERTIBLE.

30



CUTLASS CIERA ▶ TRADITIONAL MID-SIZE FAMILY CAR OF EXCEPTIONAL DEPENDABILITY AND VALUE.

42



CUTLASS CALAIS ▶ AFFORDABLE, SMART, SPIRITED COMPACT FOUR-DOOR SEDANS AND SPORT COUPES.

50



CUTLASS CRUISER ▶ MID-SIZE, VERSATILE FRONT-DRIVE WAGON WITH AVAILABLE SEATING FOR EIGHT.

62



CUSTOM CRUISER ▶ ALL-NEW, FULL-SIZE, EIGHT-PASSENGER LUXURY WAGON WITH CONTEMPORARY STYLE.

66



SILHOUETTE ▶ STYLISH, LUXURIOUS, VERSATILE FRONT-DRIVE MINIVAN WITH SEATING FOR UP TO SEVEN.

72



BRAVADA ▶ ALL-NEW LUXURY SPORT UTILITY WITH A REVOLUTIONARY ROAD MANAGEMENT SYSTEM.

80



THE OLDSMOBILE EDGE ▶ MOST COMPREHENSIVE OWNER SATISFACTION PROGRAM IN THE INDUSTRY.

88



NINETY EIGHT
REGENCY ELITE

NINETY EIGHT...ALL-NEW FULL-SIZE SEDANS THAT REDEFINE LUXURY. CHOOSE FROM THE

REGENCY ELITE, A BEAUTIFULLY RESTYLED, CONTEMPORARY LUXURY SEDAN...OR THE TOURING SEDAN,

A SOPHISTICATED PERFORMANCE SEDAN DESIGNED WITH THE DRIVING ENTHUSIAST IN MIND.

▶ FULL-SIZE COMFORT FOR SIX ADULTS ▶ NINE INCHES LONGER ▶ 20 CUBIC FEET OF TRUNK SPACE ▶ POWERFUL 3800 V6 ENGINE ▶ ANTI-LOCK BRAKING SYSTEM

▶ AVAILABLE COMPUTER COMMAND RIDE AUTOMATICALLY ADJUSTS THE SUSPENSION TO ROAD CONDITIONS ▶ AUTOMATIC LOAD-LEVELING ▶ ELECTRONICALLY

CONTROLLED TRANSMISSION PROVIDES BETTER SMOOTHNESS AND RESPONSE ▶ FOUR-WHEEL INDEPENDENT SUSPENSION ▶ TWO-SIDED GALVANIZED STEEL FOR

CORROSION PROTECTION ▶ FLUSH-MOUNTED GLASS REDUCES WIND NOISE ▶ EZ KOOL SOLAR GLASS ▶ "CHILD PROOF" REAR LOCKS ▶ THE OLDSMOBILE EDGE



NINETY EIGHT REGENCY ELITE

▶ DRIVER-SIDE AIR BAG

▶ AVAILABLE LEATHER IN

SEATING AREAS ▶ POWER

WINDOWS ▶ SIX-WAY POWER

DRIVER SEAT ▶ AUTOMATIC

COMFORT CONTROL AIR

CONDITIONING ▶ PASS-KEY

THEFT-DETERRENT SYSTEM

▶ AM/FM STEREO WITH

CASSETTE AND MUSIC SEARCH

▶ TILT-WHEEL STEERING ▶ LOW-

LEVEL OIL SENSOR ▶ AVAILABLE

TOUCH CONTROL STEERING

WHEEL FOR ADJUSTING CLIMATE

AND STEREO SYSTEMS



REAR SEAT AIR DUCT PROVIDES
IMPROVED COMFORT FOR
ALL PASSENGERS



THE AVAILABLE ELECTRONIC
INSTRUMENT CLUSTER WAS
DESIGNED WITH THE DRIVER IN
MIND. ALL SURROUNDING CONTROLS
ARE ERGONOMICALLY DESIGNED
TO BE WITHIN EASY REACH.



NINETY EIGHT TOURING SEDAN

▶ 3800 V6 ENGINE WITH TUNED

PORT INJECTION ▶ TOURING

SUSPENSION ▶ ANTI-LOCK

BRAKING SYSTEM ▶ 16" ALU-

MINUM WHEELS ▶ AUTOMATIC

COMFORT CONTROL AIR

CONDITIONING ▶ POWER

WINDOWS AND LOCKS ▶ POWER

OUTSIDE MIRRORS WITH DRIVER-

SIDE ELECTRIC DEFOGGER

▶ TWILIGHT SENTINEL

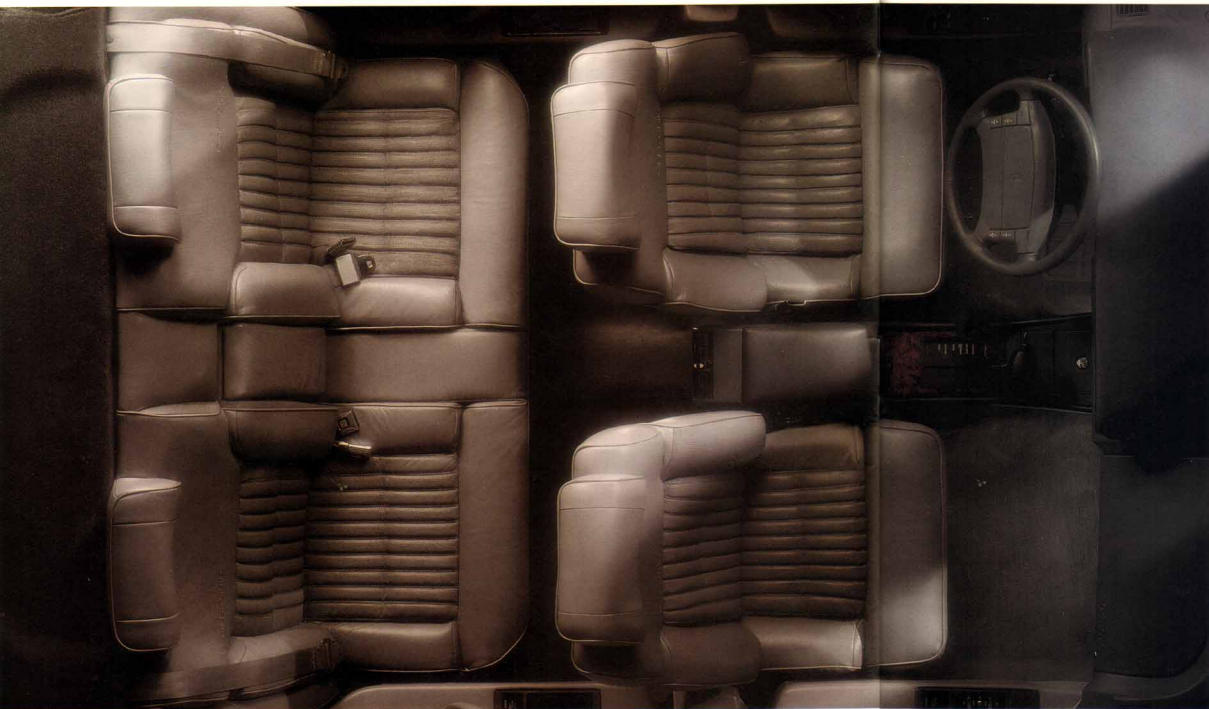
AUTOMATICALLY TURNS THE

HEADLAMPS ON/OFF

▶ AVAILABLE POWER ASTORROOF

▶ THE OLDSMOBILE EDGE

NINETY EIGHT TOURING SEDAN



▶ DRIVER-SIDE AIR BAG ▶ SIX-

WAY POWER FRONT BUCKET

SEATS WITH FORE-AFT, RECLINE,

SIDE BOLSTER, LUMBAR, THIGH

AND HEAD RESTRAINT ADJUST-

MENTS ▶ TOUCH-CONTROL

STEERING WHEEL FOR STEREO

AND CLIMATE SYSTEMS

▶ LEATHER IN SEATING AREAS

▶ GENUINE BURLED WALNUT

CONSOLE, INSTRUMENT PANEL

AND DOOR TRIM ▶ EXTRA

POWER OUTLET IN CONSOLE

▶ ELECTROCHROMIC REARVIEW

MIRROR AUTOMATICALLY

ADJUSTS TO REDUCE GLARE

▶ AM/FM STEREO WITH SEEK-

SCAN AND AUTO-REVERSE

CASSETTE ▶ AVAILABLE HEATED

BUCKET SEATS ▶ AVAILABLE

COMPACT DISC PLAYER

*THE TOURING SEDAN'S ANALOG
INSTRUMENT PANEL FEATURES
A BACKLIT SPEEDOMETER,
TACHOMETER AND GAGES*



NINETY EIGHT



NINETY EIGHT REGENCY ELITE SHOWN ABOVE

EXTERIOR COLORS

- WHITE 40
- MEDIUM GARNET RED METALLIC 72
- DARK GARNET RED METALLIC 76
- LIGHT ANTELOPE GLAMOUR METALLIC 95*
- LIGHT ALBURN METALLIC 64†
- DARK ALBURN METALLIC 66†
- MEDIUM SAPPHIRE BLUE GLAMOUR METALLIC 83*
- BLACK SAPPHIRE BLUE METALLIC 28
- PLATINUM METALLIC 13
- PASTEL SLATE GRAY 18
- MEDIUM SLATE GRAY METALLIC 85
- BLACK 41
- 1.N.A. ON TOURING SEDAN

NINETY EIGHT DIMENSIONS		
WHEEL BASE (IN).....	100.8	55.1
TRACK, FRONT/REAR (IN).....	60.5/60.2	36.07
TIRE SIZE (ELITE/TOURING SEDAN).....	P205/70R15, P205/60R16	38.7/37.7
WHEEL SIZE (ELITE/TOURING SEDAN).....	15 x 6 7/8 x 7	42.0/41.6
BRAKE TYPE, FRONT/REAR.....	DISC/DRUM	5/0.9/38.7
FUEL TANK (GALS.).....	20	5/6
LENGTH (IN).....	205.8	20.2
WIDTH (IN).....	74.6	

NINETY EIGHT POWERTRAIN SPECIFICATIONS		
ENGINE.....	3800 V6	
DISPLACEMENT.....	3800 (231 CU. IN.)	
ENGINE TYPE.....	V6	
BRAKE HP.....	170 @ 4800	
NET TORQUE (LBS. FT.).....	220 @ 3200	
COMPRESSION RATIO.....	8.5:1	
FUEL MANAGEMENT.....	SEQUENTIAL PORT INJECTION	
TRANSMISSION.....	4-SPEED AUTOMATIC ELECTRONIC	
SUSPENSION/HANDLING.....		
FRONT/REAR.....	4-WHEEL INDEPENDENT WITH MACPHERSON STRUT/COIL SPRING	
FRONT TURNING DIAMETER, CURB TO CURB (FT).....	39.4	

- WHEELS 15" SIMULATED WIRE WHEEL, STANDARD ON REGENCY ELITE
- 16" ALUMINUM STYLED WHEEL, STANDARD ON TOURING SEDAN
- 15" ALUMINUM STYLED WHEEL, OPTIONAL ON REGENCY ELITE



STANDARD FEATURES

NINETY EIGHT REGENCY ELITE INCLUDES:

- ▶ 4-WHEEL INDEPENDENT SUSPENSION
- ▶ AUTOMATIC LEVELING SYSTEM
- ▶ POWER FRONT DISC/REAR DRUM BRAKES
- ▶ ANTI-LOCK BRAKING SYSTEM
- ▶ POWER RACK AND PINION STEERING
- ▶ SIMULATED WIRE WHEEL DISCS
- ▶ ALL-SEASON RADIAL WSW TIRES
- ▶ BASE COAT/CLEAR COAT PAINT
- ▶ 2 SIDED GALVANIZED STEEL BODY PANELS (EXCEPT ROOF)
- ▶ COMPOSITE HALOGEN HEADLAMPS
- ▶ ELECTRIC OUTSIDE MIRRORS
- ▶ POWER ANTENNA
- ▶ EZ COOL TINTED WINDOWS
- ▶ PULSE WIPERS
- ▶ AUTOMATIC AIR CONDITIONING WITH REAR SEAT DUCT
- ▶ CONVENIENCE GROUP, INCLUDING UNDERHOOD AND TRUNK LAMPS, COVERED VISOR MIRRORS AND CHIME TONES
- ▶ CRUISE CONTROL
- ▶ SIDE WINDOW DEFOGGERS
- ▶ REAR WINDOW DEFOGGER
- ▶ POWER DOOR LOCKS
- ▶ "CHILD PROOF" REAR DOOR LOCKS
- ▶ POWER WINDOWS WITH DRIVER-CONTROLLED LOCKOUT SWITCH
- ▶ REMOTE FUEL FILLER DOOR RELEASE
- ▶ POWER TRUNK LID LOCK RELEASE

- ▶ CARPETED FLOOR MATS
- ▶ AM/FM STEREO WITH AUTO REVERSE CASSETTE, DIGITAL CLOCK AND 6 SPEAKERS
- ▶ 55/45 DIVIDED BENCH FRONT SEAT
- ▶ FRONT SEAT STORAGE ARMREST
- ▶ REAR SEAT CENTER ARMREST
- ▶ DRIVER SIDE SUPPLEMENTAL INFLATABLE RESTRAINT
- ▶ FRONT LAP/SHOULDER SAFETY BELTS
- ▶ REAR LAP/SHOULDER SAFETY BELTS, OUTBOARD POSITIONS
- ▶ TILT WHEEL STEERING
- ▶ INSTRUMENT PANEL CLUSTER, INCLUDING ANALOG SPEEDOMETER, TEMPERATURE AND FUEL GAGES, AND TRIP ODOMETER
- ▶ PASS KEY THEFT DETERRENT SYSTEM
- ▶ SHIFT/BRAKE INTERLOCK
- ▶ LOW OIL LEVEL SENSOR

NINETY EIGHT TOURING SEDAN ALSO INCLUDES:

- ▶ TOURING SUSPENSION, INCLUDING SPECIAL COMPONENTS
- ▶ ELECTRIC DEFOG OUTSIDE DRIVER-SIDE MIRROR
- ▶ 16" ALUMINUM WHEELS
- ▶ TOURING RADIAL BSW TIRES
- ▶ HIGH-CAPACITY BATTERY
- ▶ HIG CAPACITY COOLING EQUIPMENT
- ▶ FOGLAMPS
- ▶ PULSE WIPERS
- ▶ AUTOMATIC HEADLIGHT CONTROL
- ▶ TRUNK CARGO NET
- ▶ BURLED WALNUT ON CONSOLE

- ▶ INSTRUMENT PANEL AND DOORS
- ▶ STORAGE CONSOLE WITH FLOOR SHIFTER
- ▶ INSTRUMENT PANEL ANALOG GAGE CLUSTER, INCLUDING SPEEDOMETER, TACHOMETER, GAGES FOR FUEL, OIL PRESSURE, COOLANT TEMPERATURE AND VOLTMETER, PLUS DRIVER INFORMATION CENTER
- ▶ ELECTROCHROMIC DAY-NIGHT MIRROR
- ▶ ILLUMINATED VISOR MIRRORS
- ▶ GRAPHIC EQUALIZER
- ▶ REMOTE ACCESSORY CONTROL PACKAGE, INCLUDING ILLUMINATION PACKAGE, RETAINED ACCESSORY POWER, AND REMOTE LOCK CONTROLS
- ▶ FRONT BUCKET SEATS WITH POWER RECLINE, DUAL LIMB BAR, THIGH SUPPORT AND ARTICULATING HEAD RESTRAINTS
- ▶ REAR SEAT HEAD RESTRAINTS
- ▶ LEATHER-WRAPPED STEERING WHEEL
- ▶ STEERING WHEEL TOUCH CONTROLS FOR CLIMATE AND RADIO

- ▶ STRUTS AND SHOCK ABSORBERS, PLUS SELECTOR SWITCH FOR STANDARD OR FIRM RIDE MODE, AND LEATHER WRAPPED STEERING WHEEL
- ▶ ENGINE BLOCK HEATER*
- ▶ HEATED BUCKET SEATS* (TOURING SEDAN ONLY)
- ▶ 15" ALUMINUM WHEELS
- ▶ BLACKWALL TIRES
- ▶ ELECTRONIC INSTRUMENT CLUSTER WITH DRIVER INFORMATION CENTER, INCLUDING FUEL ECONOMY, TIME/DATE, ELAPSED TIME, AVG. MPH, DIST. TO DESTINATION, EST. TIME OF ARRIVAL, OIL CHANGE REMINDER, GAGE CLUSTER, AND SERVICE REMINDERS
- ▶ GLAMOUR METALLIC PAINT COLORS
- ▶ TOWING PACKAGE, INCLUDING SPECIAL SHOCK ABSORBERS, SPRINGS, STABILIZER BARS, WITH HIGH CAPACITY COOLING*
- ▶ LEATHER SEATING AREAS WITH LEATHER-WRAPPED STEERING WHEEL
- ▶ AM/FM/STEREO WITH AUTO REVERSE CASSETTE, GRAPHIC EQUALIZER AND 6 SPEAKERS*

OPTIONAL FEATURES

- NOTE: THE NINETY EIGHT TOURING SEDAN IS ONLY EQUIPPED, ONLY FIVE OPTIONS ARE AVAILABLE*.
- ▶ ASTORROOF SLIDING GLASS PANEL*
- ▶ FES TOURING SUSPENSION, INCLUDING SPECIAL STEERING GEAR, LEATHER-WRAPPED STEERING WHEEL, BSW TIRES, AND HIGH-CAPACITY COOLING
- ▶ COMPUTER COMMAND RIDE SYSTEM, INCLUDING COMPUTER-CONTROLLED

*RECEIVES OLGM™ AM/STEREO BROADCASTS MOST AM/STEREO STATIONS ACROSS THE COUNTRY BROADCAST IN C-QUAM BUT SOME DO NOT CHECK WITH YOUR LOCAL STATIONS FOR COMPATIBILITY IN YOUR AREA.



THE REMOTE LOCK CONTROL LOCKS OR UNLOCKS DOORS AND TRUNK UP TO FIFTEEN FEET AWAY.



THE SHOULDER BELT HEIGHT ADJUSTER COMFORTABLY ADAPTS TO OCCUPANTS.



THE OVERHEAD CONSOLE OFFERS STORAGE FOR A GARAGE DOOR OPENER AND SUNGLASSES.



THE AUXILIARY SUNSHADE EXTENDS TO SHIELD DRIVERS' AND FRONT SEAT PASSENGER'S EYES FROM THE SUN.



THE PASS KEY THEFT DETERRENT SYSTEM DISCOURAGES THEFT WITH AN ELECTRONICALLY ENCODED KEY.

OPTION PACKAGES

OPTION PACKAGE	REGENCY ELITE	
	ISB	ISC
▶ ACCENT STRIPE.....	✓	✓
▶ REMINDER PACKAGE FOR LOW FUEL, LOW OIL PRESSURE, LOW OIL LEVEL, HIGH ENGINE TEMPERATURE, LOW WASHER FLUID LEVEL AND BRAKE WARNING.....	✓	✓
▶ ELECTROCHROMIC DAY-NIGHT MIRROR.....	✓	✓
▶ ILLUMINATED VISOR MIRRORS.....	✓	✓
▶ POWER PASSENGER SEAT ADJUSTER.....	✓	✓
▶ STEERING WHEEL TOUCH CONTROLS FOR CLIMATE AND RADIO.....	✓	✓
▶ 15" ALUMINUM WHEELS.....	✓	✓
▶ CORNERING LAMPS.....	✓	✓
▶ POWER TRUNK LID PULL-DOWN.....	✓	✓
▶ REMOTE ACCESSORY CONTROL PACKAGE.....	✓	✓
▶ TWILIGHT SENTINEL AUTOMATIC HEADLIGHT CONTROL.....	✓	✓
▶ TRUNK CARGO NET.....	✓	✓

TORONADO... LUXURY COUPES DESIGNED TO DELIVER AN UNCOMMON DRIVING EXPERIENCE.

CHOOSE FROM THE TORONADO, A PERSONAL LUXURY COUPE IN EVERY SENSE... OR TROFÉO, THE GRAND

TOURING COUPE FOR THE DRIVER WHO ALSO DEMANDS UNMISTAKABLE STYLE.

TORONADO TROFÉO

- ▶ POWERFUL 170-HORSEPOWER 3800 V6 ENGINE WITH TUNED PORT INJECTION
- ▶ LOW-RESTRICTION DUAL EXHAUST SYSTEM
- ▶ FOUR-WHEEL INDEPENDENT SUSPENSION
- ▶ AUTOMATIC LOAD-LEVELING SYSTEM
- ▶ ANTI-LOCK BRAKING SYSTEM
- ▶ TOURING SUSPENSION
- ▶ ELECTRONICALLY CONTROLLED TRANSMISSION
- ▶ 16" ALUMINUM-STYLED WHEELS WITH PERFORMANCE TIRES
- ▶ 14.1 CUBIC FEET OF TRUNK SPACE
- ▶ FOG LAMPS
- ▶ TWILIGHT SENTINEL AUTOMATICALLY TURNS HEADLAMPS ON/OFF
- ▶ ELECTRIC OUTSIDE MIRRORS WITH DRIVER-SIDE DEFOG
- ▶ REMOTE DOOR AND TRUNK UNLOCKING SYSTEM
- ▶ THE OLDSMOBILE EDGE



TORONADO TROFÉO

▶ DRIVER-SIDE AIR BAG ▶ SIX-WAY

POWER FRONT BUCKET SEAT

WITH RECLINE, LUMBAR AND

THIGH SUPPORT ADJUSTMENTS

▶ ELECTRONIC AUTOMATIC AIR

CONDITIONING ▶ LEATHER-

WRAPPED TILT STEERING

WHEEL WITH TOUCH CONTROLS

FOR CLIMATE AND STEREO

SYSTEMS ▶ ELECTRONIC

ANALOG GAGE CLUSTER

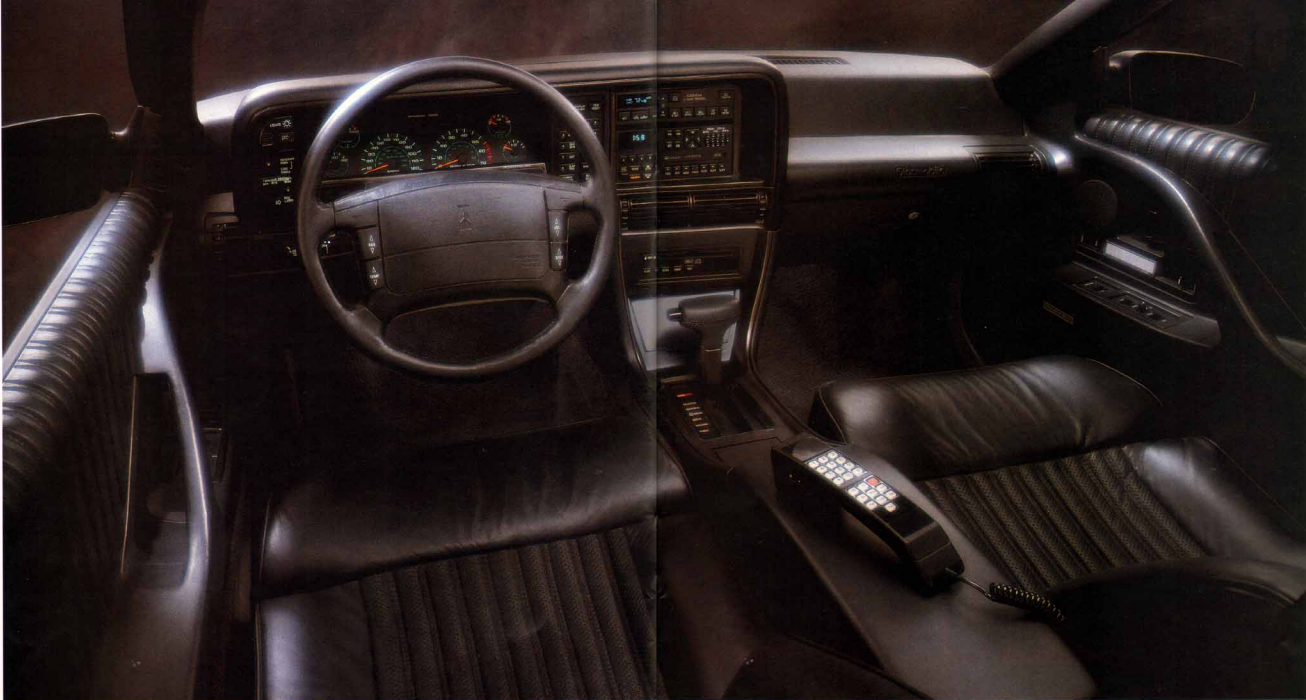
▶ CRUISE CONTROL ▶ PASS-KEY ▶ AM/FM STEREO WITH

THEFT-DETERRENT SYSTEM AUTO-REVERSE CASSETTE AND

▶ OIL CHANGE REMINDER SYSTEM SIX-SPEAKER SOUND SYSTEM

▶ ELECTRONIC DIGITAL COMPASS ▶ AVAILABLE MOBILE PHONE

▶ POWER WINDOWS AND LOCKS WITH HANDS-FREE OPERATION



THE TORONADO TROFÉO'S AVAILABLE
ULTRASUEDE CLOTH INTERIOR.

TORONADO

▶ DRIVER-SIDE AIR BAG

▶ FOUR-WHEEL INDEPENDENT

SUSPENSION ▶ ANTI-LOCK

BRAKING SYSTEM ▶ AVAILABLE

HEATED WINDSHIELD DEFROSTS

IN SECONDS ▶ ELECTRONIC AIR

CONDITIONING AUTOMATICALLY

MAINTAINS TEMPERATURE

▶ AUTOMATIC LOAD-LEVELING

▶ HIDDEN HALOGEN HEAD- CASSETTE ▶ PASS-KEY THEFT-

LAMPS ▶ POWER WINDOWS DETERRENT SYSTEM

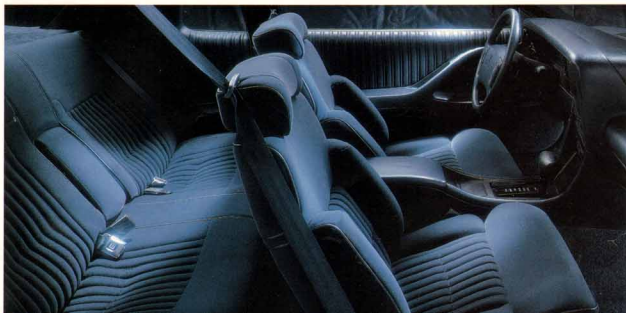
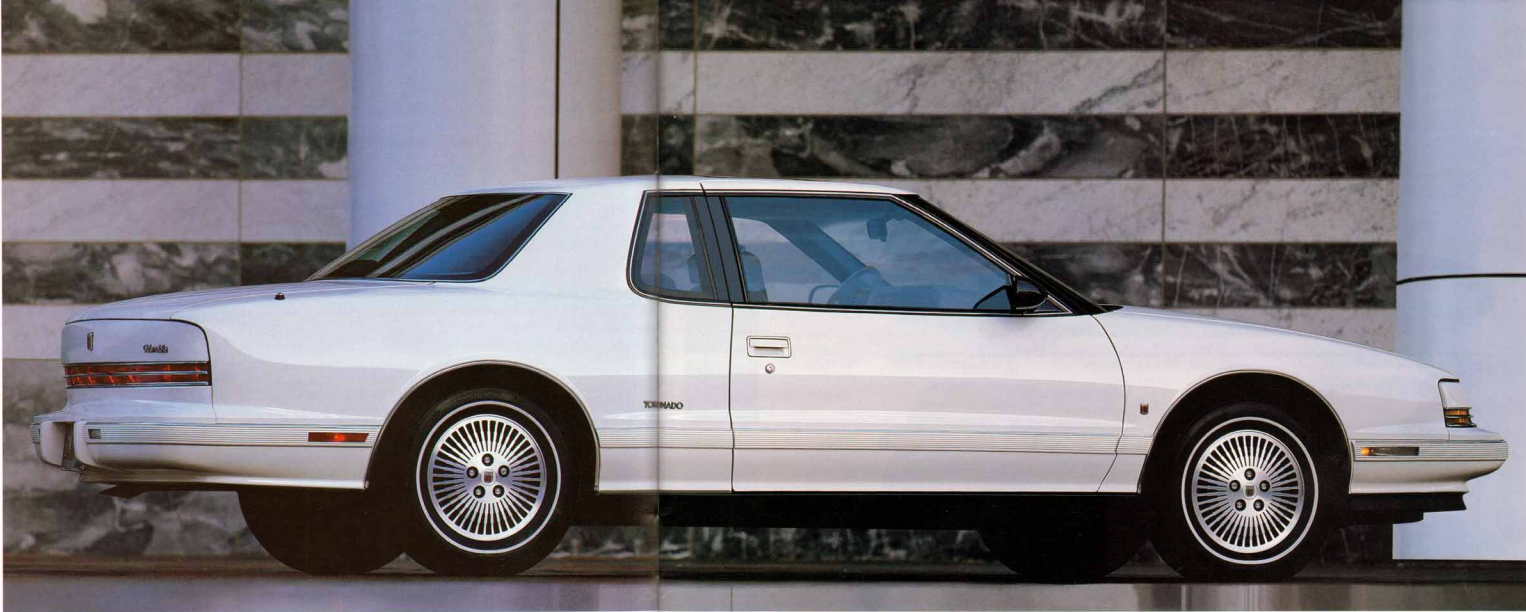
AND DRIVER SEAT ▶ CRUISE ▶ AVAILABLE FE3 TOURING

CONTROL ▶ CORNERING LAMPS SUSPENSION ▶ AVAILABLE

▶ ELECTRIC OUTSIDE MIRRORS 55/45 DIVIDED BENCH SEAT

WITH DRIVER-SIDE DEFOG ▶ AVAILABLE MOBILE TELEPHONE

▶ AM/FM STEREO WITH ▶ THE OLDSMOBILE EDGE



THE TORONADO INTERIOR FEATURES A SIX-WAY POWER DRIVER FRONT BUCKET SEAT FOR THE ULTIMATE IN COMFORT AND SUPPORT. A 55/45 DIVIDED BENCH IS AVAILABLE.

THE OPTIONAL ASTROROOF HAS AN ELECTRIC SLIDING PANEL OF GRAY TINTED GLASS. (SHOWN AT FAR LEFT.)

TORONADO



TORONADO TROFEO SHOWN ABOVE

TORONADO DIMENSIONS

WHEEL BASE (IN).....	108.0	HEIGHT (IN).....	53.0
TRACK, FRONT/REAR (IN).....	59.9/59.9	WEIGHT, C.I.B.B. (LBS.).....	3455
TIRE SIZE (TORONADO/TROFEO).....	P225/65SR15, P225/60SR16	* HEADROOM, FRONT/REAR (IN).....	37.8/37.8
WHEEL SIZE (TORONADO/TROFEO).....	15 x 6.16 x 7	LEGROOM, FRONT/REAR (IN).....	43.0/35.7
BRAKE TYPE, FRONT/REAR.....	DISC/DISC	SHOULDER ROOM, FRONT/REAR (IN).....	38.3/37.5
FUEL TANK (GALLS).....	18.8	SEATING CAPACITY.....	5
LENGTH (IN).....	200.3	TRUNK CAPACITY (CU. FT.).....	14.1
WIDTH (IN).....	72.8	* HEADROOM IS REDUCED WITH AVAILABLE ASTORFEO.	

TORONADO POWERTRAIN SPECIFICATIONS

ENGINE.....	3800 V6
DISPLACEMENT.....	3800 (231 CU. IN.)
ENGINE TYPE.....	V6
BRAKE HP.....	170 @ 4800
NET TORQUE (LBS.-FT.).....	220 @ 3300
COMPRESSION RATIO.....	8.5:1
FUEL MANAGEMENT.....	SEQUENTIAL PORT INJECTION
TRANSEXLE.....	4-SPEED AUTOMATIC ELECTRONIC

SUSPENSION/HANDLING	
FRONT/REAR.....	4-WHEEL INDEPENDENT WITH MACPHERSON STRUT/TRANSFLEX FIBERGLASS LEAF SPRING
FRONT TURNING DIAMETER, CURB TO CURB (FT.).....	39.4

WHEELS 15" ALUMINUM STYLED WHEEL STANDARD ON TORONADO 15" ALUMINUM STYLED WHEEL STANDARD ON TROFEO



EXTERIOR COLORS

WHITE 40

WHITEDIAMOND 93*

BRIGHT RED 81*

MEDIUM GARNET RED METALLIC 72

DARK GARNET RED METALLIC 76

LIGHT ANTELOPE GLAMOUR METALLIC 95*

MEDIUM SAPPHIRE BLUE GLAMOUR METALLIC 83*

BLACK SAPPHIRE BLUE METALLIC 28

PLATINUM METALLIC 13

MEDIUM SLATE GRAY METALLIC 85

BLACK 41

1. N.A. ON TORONADO

2. N.A. ON TORONADO TROFEO

*EXTRA COST COLOR

TWO-TONE PAINT SCHEMES ON TORONADO AT EXTRA COST:

PLATINUM METALLIC 13/MEDIUM SLATE GRAY METALLIC 85
 BLACK 41/MEDIUM SLATE GRAY METALLIC 85
 BLACK SAPPHIRE BLUE METALLIC 28/MEDIUM SLATE GRAY METALLIC 85
 WHITE 40/MEDIUM SLATE GRAY METALLIC 85
 BLACK 41/MEDIUM SLATE GRAY METALLIC 85
 MEDIUM GARNET RED METALLIC 72/PLATINUM METALLIC 13
 MEDIUM SLATE GRAY METALLIC 85/PLATINUM METALLIC 13

STANDARD FEATURES

TORONADO INCLUDES:

- 4-WHEEL INDEPENDENT SUSPENSION WITH MACPHERSON FRONT STRUTS AND TRANSFLEX REAR SPRING
- AUTOMATIC LEVELING SYSTEM
- 4-WHEEL POWER DISC BRAKES
- ANTI-LOCK BRAKING SYSTEM
- POWER BACK AND PARKON STEERING
- 15" ALUMINUM WHEELS
- TORBING RADIAL BSW TIRES
- HIGH-CAPACITY BATTERY
- BASE-COAT/CLEAR-COAT PAINT
- 2 SIDED GALVANIZED STEEL BODY PANELS (EXCEPT ROOF)
- HALOGEN HIDDEN HEADLAMPS
- CORNERING LAMPS
- ELECTRIC OUTSIDE MIRRORS (DRIVER'S SIDE DEFOG)
- AUTOMATIC HEADLIGHT CONTROL
- PASS-KEY THEFT-DETERRENT SYSTEM
- FLUSH-MOUNTED WINDOW GLASS
- SOFT-RAY TINTED WINDOWS
- PULSE WIPERS
- AUTOMATIC AIR CONDITIONING
- CONVENIENCE GROUP INCLUDING UNDER HOOD AND TRUNK LAMPS, VISOR MIRRORS AND CHIME TONES

- CRUISE CONTROL
- POWER WINDOWS
- SIDE WINDOW DEFOGGER
- REAR WINDOW DEFOGGER
- POWER DOOR LOCKS
- CENTRAL DOOR UNLOCK FROM TRUNK
- CARPETED FLOOR AND LOWER DOOR PANELS
- AUTOMATIC FUEL FILLER DOOR RELEASE
- ANALOG INSTRUMENT CLUSTER WITH TACHOMETER AND ELECTRONIC REMINDER PACKAGE
- AM/FM STEREO WITH SEEK SCAN, AUTO-REVERSE CASSETTE WITH MUSIC SEARCH, DIGITAL CLOCK AND DIMENSIONAL SOUND 6-SPEAKER SYSTEM
- POWER ANTENNA
- FRONT BUCKET SEATS
- POWER DRIVER'S SEAT
- SEAT BACK RECLINERS, DRIVER AND PASSENGER SIDE
- DRIVER-SIDE SUPPLEMENTAL INFLATABLE RESTRAINT
- FRONT AND REAR LAP/SHOULDER SAFETY BELTS, OUTBOARD POSITIONS
- LEATHER-WRAPPED STEERING WHEEL
- TILT-WHEEL STEERING
- TRUNK CARGO NET
- LEATHER-WRAPPED FLOOR SHIFTER

- HEADER PANEL READING LAMPS
- REAR READING LAMPS
- WHEEL-OPENING AND ROCKER PANEL MOLDINGS
- DELUXE LUGGAGE COMPARTMENT TRIM
- POWER TRUNK-LID LOCK RELEASE

TORONADO TROFEO ALSO INCLUDES:

- TOURING SUSPENSION
- 16" ALUMINUM WHEELS
- PERFORMANCE TIRES
- ELECTRONIC DIGITAL COMPASS
- FOGLAMPS
- ILLUMINATION PACKAGE FOR FRONT DOOR LOCKS AND INTERIOR
- REMOTE LOCK CONTROLS
- ELECTROCHROMIC DAY/NIGHT MIRROR
- ILLUMINATED VISOR MIRRORS
- POWER SEAT ADJUSTERS FOR LUMBAR, RECLINER AND THIGH SUPPORT
- REAR SEAT HEAD RESTRAINTS
- STEERING WHEEL TOUCH CONTROLS FOR CLIMATE AND RADIO
- LEATHER SEATING AREAS
- FRONT FASCIA WITH EXTENDED AIR DAM
- DUAL EXHAUST

OPTIONAL FEATURES

- NOTE: THE TORONADO TROFEO IS SO FULLY EQUIPPED, ONLY FEW OPTIONS ARE AVAILABLE!
- 55/45 DIVIDED BENCH SEAT WITH FOLDING ARMREST, COLUMN SHIFT AND ELECTRONIC G-AGE CLUSTER
 - ASTORFEO SLIDING GLASS PANEL*
 - SELF-DEFROSTING HEATED WINDSHIELD*
 - SPECIAL PAINT COLORS*
 - ELECTRONIC G-AGE CLUSTER
 - 7-SPRING TOURING SUSPENSION
 - ENGINE BLOCK HEATER*
 - WHITE-STRIPED TIRES
 - MOBILE KEYPAD CONTROL TELEPHONE*
 - VISUAL INFORMATION CENTER WITH ELECTRONIC COMPASS*
 - LEATHER SEATING AREAS
 - ULTRASOUND INTERIOR TRIM*
 - AM STEREO/FM STEREO WITH AUTO-REVERSE CASSETTE AND GRAPHIC EQUALIZER†
 - AM STEREO/FM STEREO WITH COMPACT DISC AND GRAPHIC EQUALIZER†
 - AM STEREO/FM STEREO WITH COMPACT DISC, AUTO-REVERSE CASSETTE AND GRAPHIC EQUALIZER†
- RECEIVES G-CLAM™ AM STEREO BROADCASTS MOST AM STEREO STATIONS ACROSS THE COUNTRY BROADCAST IN G-CLAM BUT SOME DO NOT CHECK WITH YOUR LOCAL STATIONS FOR COMPATIBILITY IN YOUR AREA.



THE STANDARD 3800 V6 ENGINE WITH TUNED PORT INJECTION PROVIDES 170 HORSEPOWER.



THE OPTIONAL FULL-FREQUENCY COMPACT DISC PLAYER LETS YOU ENJOY A HIGHER LEVEL OF ENTERTAINMENT REPRODUCTION.



THE NEW STEERING WHEEL FOR TROFEO COMBINES THE PEACE OF MIND OF AN AIR BAG WITH THE CONVENIENCE OF TOUCH CONTROLS FOR THE STEREO AND CLIMATE SYSTEMS.



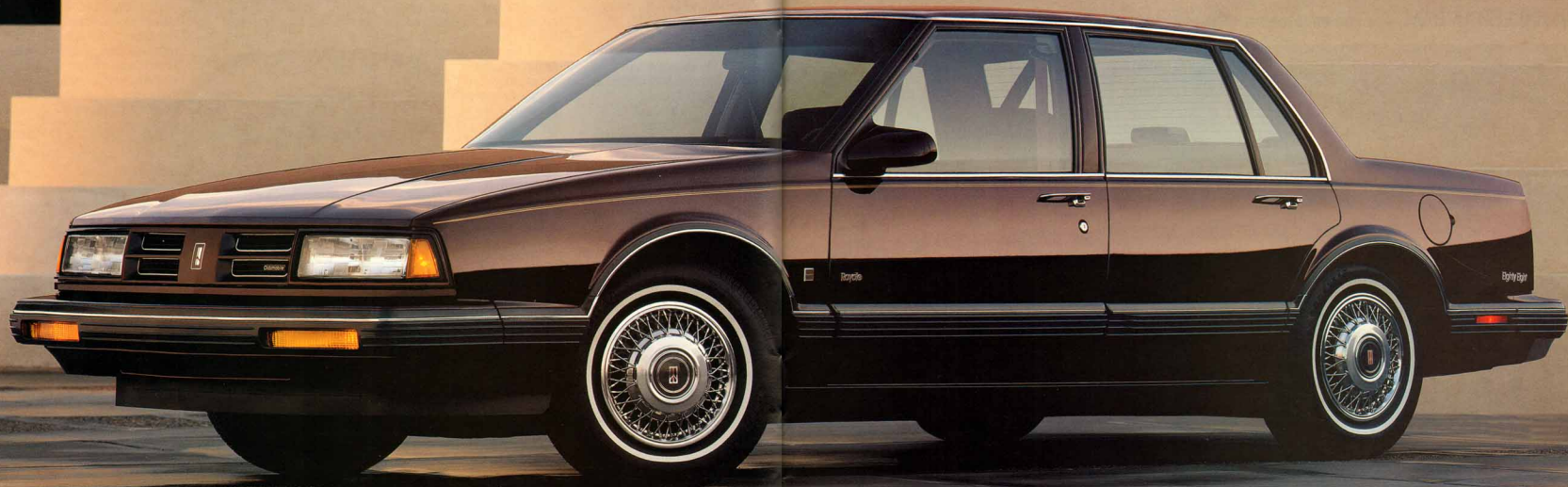
THE DRIVER INFORMATION SYSTEM FEATURES A DIGITAL COMPASS TO KEEP YOU POINTED IN THE RIGHT DIRECTION (STANDARD ON TROFEO).



THE 14.1 CUBIC FEET OF CARGO SPACE IN TORONADO MAKES THIS GREAT TOURING COUPE PERFECT FOR JUST THAT...TOURING.

OPTION PACKAGES

	TORONADO
	ISB
6-WAY POWER PASSENGER SEAT ADJUSTER.....	✓
ILLUMINATION PACKAGE FOR FRONT DOOR LOCKS AND INTERIOR.....	✓
ILLUMINATED VISOR MIRRORS.....	✓
ELECTROCHROMIC DAY/NIGHT MIRROR.....	✓
REMOTE LOCK CONTROLS.....	✓
STEERING WHEEL TOUCH CONTROLS FOR CLIMATE AND RADIO.....	✓



EIGHTY EIGHT... CHOOSE FROM THE EIGHTY EIGHT ROYALE, A NAME SYNONYMOUS

WITH TASTEFULLY STYLED, SPACIOUS AUTOMOBILES... OR EIGHTY EIGHT ROYALE BROUGHAM, THE WAY

TO GET EVEN MORE COMFORTABLE WITH ONE OF THE WORLD'S BEST-KNOWN FAMILY CARS. IN BOTH

CASES, WHAT YOU'LL APPRECIATE MOST IS THEIR ENDURING EXCELLENCE.

- ▶ CLASSIC STYLING ▶ FULL-SIZE ROOM FOR SIX ▶ FRONT-WHEEL DRIVE IMPROVES TRACTION AND CONTRIBUTES TO INTERIOR ROOMINESS ▶ POWERFUL 3800
- V6 ENGINE ▶ FOUR-SPEED AUTOMATIC OVERDRIVE TRANSMISSION ▶ FOUR-WHEEL INDEPENDENT SUSPENSION ▶ POWER RACK-AND-PINION STEERING ▶ POWER
- TRUNK RELEASE ▶ OVER 16 CUBIC FEET OF TRUNK SPACE ▶ AVAILABLE ANTI-LOCK BRAKING SYSTEM ▶ AVAILABLE TOWING PACKAGE ▶ THE OLDSMOBILE EDGE

**EIGHTY EIGHT
ROYALE BROUGHAM**

EIGHTY EIGHT
ROYALE BROUGHAM

- ▶ AVAILABLE DRIVER SIDE AIR BAG
- ▶ AIR CONDITIONING
- ▶ DUAL REMOTE OUTSIDE MIRRORS
- ▶ DIVIDED RECLINING FRONT BENCH SEAT PROVIDES EXCELLENT SUPPORT AND COMFORT
- ▶ POWER TRUNK RELEASE
- ▶ TILT-WHEEL STEERING
- ▶ FLO-THRU VENTILATION SYSTEM
- ▶ CONVENIENCE GROUP FEATURES
- ▶ AVAILABLE COMPACT DISC PLAYER WITH AM/FM STEREO
- ▶ AVAILABLE LEATHER TRIM IN THE SEATING AREAS



THE AVAILABLE DRIVER-SIDE AIR BAG IS LOCATED IN A MODULE IN THE CENTER OF THE STEERING WHEEL, AND DEPLOYS UPON SUFFICIENT FRONTAL IMPACT.

EIGHTY EIGHT ROYALE

▶ POWERFUL 165-HORSEPOWER 3800 V6 ENGINE ▶ FRONT-WHEEL DRIVE ▶ POWER RACK-AND-PINION STEERING ▶ FULL-SIZE COMFORT FOR SIX ADULTS ▶ BASE-COAT/CLEAR-COAT PAINT ▶ POWER BRAKES (ANTI-LOCK BRAKING SYSTEM IS AVAILABLE)
▶ FOUR-WHEEL INDEPENDENT SUSPENSION ▶ DUAL OUTSIDE MIRRORS ▶ SIDE WINDOW DEFOGGERS ▶ TILT-WHEEL STEERING ▶ AM/FM STEREO WITH SEEK-SCAN AND DIGITAL CLOCK ▶ AVAILABLE DRIVER-SIDE AIR BAG ▶ AVAILABLE TOWING PACKAGE



THE EIGHTY EIGHT ROYALES
COMFORTABLE INTERIOR FEATURES
A BENCH SEAT WITH FOLD-DOWN
CENTER ARMREST.



EIGHTY EIGHT ROYALE



EIGHTY EIGHT ROYALE BROUGHAM SHOWN ABOVE

EXTERIOR COLORS

WHITE 40

MEDIUM GARNET
RED METALLIC 72

DARK GARNET
RED METALLIC 76

LIGHT BEECHWOOD
METALLIC 62

MEDIUM BEECHWOOD
METALLIC 69

LIGHT SAPPHIRE BLUE
METALLIC 72

BLACK SAPPHIRE
BLUE METALLIC 28

PLATINUM METALLIC 13

MEDIUM SLATE
GRAY METALLIC 85

BLACK 41



STANDARD FEATURES

- ▶ 4 WHEEL INDEPENDENT SUSPENSION
- ▶ POWER FRONT DISC/REAR DRUM BRAKES
- ▶ POWER RACK-AND-PINION STEERING
- ▶ 14" WHEELS
- ▶ ALL-SEASON RADIAL BSW TIRES
- ▶ FLOTHRU VENTILATION
- ▶ BASE-COAT/CLEAR-COAT PAINT
- ▶ COMPOSITE HALOGEN HEADLAMPS
- ▶ DUAL OUTSIDE MIRRORS (DRIVER'S SIDE REMOTE)
- ▶ SOFT RAY TINTED WINDOWS
- ▶ PULSE WIPERS
- ▶ AIR CONDITIONING
- ▶ SIDE WINDOW DEFOGGERS
- ▶ CARPETED FLOOR AND LOWER DOOR PANELS
- ▶ AM/FM STEREO WITH EXTENDED RANGE SPEAKERS AND DIGITAL CLOCK
- ▶ CUSTOM BENCH FRONT SEAT
- ▶ AUTOMATIC FRONT LAP/SHOULDER SAFETY BELTS, OUTBOARD POSITIONS
- ▶ REAR LAP/SHOULDER SAFETY BELTS, OUTBOARD POSITIONS
- ▶ TILT-WHEEL STEERING

- ▶ TRIP ODOMETER
- ▶ SHIFT INTERLOCK

EIGHTY EIGHT ROYALE BROUGHAM ALSO INCLUDES:

- ▶ CONVENIENCE GROUP, INCLUDING UNDER-HOOD AND TRUNK LAMPS, VISOR MIRROR AND CRIME TONES
- ▶ DUAL REMOTE OUTSIDE MIRRORS
- ▶ AUTO-REVERSE CASSETTE
- ▶ 55/45 DIVIDED BENCH FRONT SEAT
- ▶ POWER TRUNK LID LOCK RELEASE
- ▶ ALL-SEASON RADIAL BSW TIRES

OPTIONAL FEATURES

- ▶ POWER DRIVER AND PASSENGER SEAT ADJUSTER
- ▶ SUPPLEMENTAL INFLATABLE REAR TRAIT SYSTEM, WITH LEATHER-WRAPPED STEERING WHEEL
- ▶ POWER DOOR LOCKS
- ▶ POWER WINDOWS
- ▶ VINYL ROOF
- ▶ ELECTRIC REAR WINDOW DEFOGGER
- ▶ ACCENT STRIPE
- ▶ FE3 TOURING SUSPENSION, INCLUDING SPECIAL COMPONENTS, SPECIAL

- ▶ STEERING GEAR, LEATHER WRAPPED STEERING WHEEL, AUTOMATIC ELECTRIC LEVELING SYSTEM, 15" ALUMINUM STYLED WHEELS AND PERFORMANCE TIRES, ALSO INCLUDES HIGH CAPACITY COOLING EQUIPMENT AND HIGH-CAPACITY BATTERY
- ▶ ANTI-LOCK BRAKING SYSTEM
- ▶ ENGINE BLOCK HEATER
- ▶ SIMULATED WIRE WHEEL DISCS
- ▶ 15" ALUMINUM WHEELS
- ▶ WHITE STRIPE TIRES
- ▶ CONVENIENCE VALVE GROUP, INCLUDING ILLUMINATION PACKAGE FOR FRONT DOOR LOCKS AND INTERIOR, ELECTRIC DUAL OUTSIDE MIRRORS, PASSENGER ILLUMINATED VISOR MIRROR, CORNERING LAMPS, AND INTERIOR COURTESY AND DUAL LENS READING LAMPS
- ▶ INSTRUMENT PANEL CLUSTER, INCLUDING VOLTMETER, TEMPERATURE AND OIL PRESSURE GAGES
- ▶ DRIVER INFORMATION SYSTEM, INCLUDING FUEL ECONOMY, TIME/DATE, AVG. MPH, EST. TIME OF ARRIVAL, TOTAL DIST. TO DESTINATION, OIL CHANGE REMINDER, AND TACHOMETER, VOLTMETER AND COOLANT TEMP GAGES

- ▶ ELECTRONIC INSTRUMENT CLUSTER, INCLUDING BAR GRAPH VEHICLE SPEED, FUEL LEVEL AND ENGINE TEMPERATURE, DIGITAL ODOMETER, TRIP ODOMETER, TIRE AND INSIDE TEMPERATURE, AND TRANSMISSION SHIFT POSITION
- ▶ HIGH-CAPACITY COOLING, INCLUDING HIGH-CAPACITY BATTERY
- ▶ DECK-LID LUGGAGE CARRIER
- ▶ TOWING PACKAGE, INCLUDING SPECIAL SHOCK ABSORBERS, SPRINGS, STABILIZER BARS, AUTOMATIC LEVELING AND HIGH-CAPACITY COOLING EQUIPMENT
- ▶ LEATHER SEATING AREAS WITH LEATHER WRAPPED STEERING WHEEL
- ▶ AM/FM STEREO WITH CASSETTE
- ▶ AM STEREO/FM STEREO WITH CASSETTE, GRAPHIC EQUALIZER AND 6-SPEAKER SYSTEM*
- ▶ AM/FM STEREO WITH COMPACT DISC, DELCO-LOC AND 6-SPEAKER SYSTEM

NOTE: AVAILABILITY VARIES BY MODEL. SEE YOUR DEALER FOR DETAILS.

*"RECEIVES-C-GRAM" AM STEREO BROADCASTS MOST AM STEREO STATIONS ACROSS THE COUNTRY BREAKCAST IN-C-GRAMS BUT SOME DO NOT CHECK WITH YOUR LOCAL STATIONS FOR COMPATIBILITY IN YOUR AREA.

EIGHTY EIGHT DIMENSIONS

	COUPE	SEDAN		COUPE	SEDAN
WHEELBASE (IN)	110.8	110.8	HEIGHT (IN)	53.9	54.7
TRACK, FRONT (REAR) (IN)	60.3/59.8	60.3/59.8	WEIGHT, CURB (LBS)	3048	3292
TIRE SIZE (STD)	P205/75R14	P205/75R14	HEADROOM, FRONT (REAR) (IN)	38.1/37.6	38.0/37.3
WHEEL SIZE (STD)	14 x 6	14 x 6	LEG ROOM, FRONT (REAR) (IN)	42.4/37.4	42.4/39.1
BRAKE TYPE, FRONT/REAR	DISC/DRUM	DISC/DRUM	SHOULDER ROOM, FRONT/REAR (IN)	59.3/57.8	59.3/59.5
FUEL TANK (GALS)	18.0	18.0	SEATING CAPACITY	6	6
LENGTH (IN)	196.3	196.3	TRUNK CAPACITY (CU. FT.)	16.2	16.3
WIDTH (IN)	72.6	72.6			

EIGHTY EIGHT POWERTRAIN SPECIFICATIONS

ENGINE	3800 V6
DISPLACEMENT	3800 (231 CU. IN.)
ENGINE TYPE	V6
BRAKE HP	165 @ 4800
NET TORQUE (LBS-FT)	201 @ 2000
COMPRESSION RATIO	8.5:1
FUEL MANAGEMENT	SEQUENTIAL PORT INJECTION
TRANSAXLE	4-SPEED AUTOMATIC
SUSPENSION/HANDLING	
FRONT/REAR	4 WHEEL INDEPENDENT WITH MACPHERRON STRUT/COIL SPRING
FRONT TRUBING (DIAMETER, CURB TO CURB) (FT.)	39.4/40.0R

WHEELS 14" DELUXE WHEEL DISC STANDARD ON ROYALE AND ROYALE BROUGHAM

14" SIMULATED WIRE WHEEL DISC OPTIONAL ON ROYALE AND ROYALE BROUGHAM WITH A BSW TIRE

15" ALUMINUM WHEEL OPTIONAL ON ROYALE AND ROYALE BROUGHAM WITH A BSW TIRE, ALSO INCLUDED WITH SUSPENSION OPTION

The Eighty Eight ROYALE BROUGHAM COUPE



THE CONVENIENT CLIP HOLDER IS INTEGRATED INTO THE STORAGE ARMREST FOR EASY ACCESS.



THE OPTIONAL AM/FM STEREO AUTO-REVERSE CASSETTE WITH SEEK SCAN AND EXTENDED RANGE SPEAKERS.



WITH OVER 16 CUBIC FEET OF TRUNK SPACE, THE EIGHTY EIGHT MAKES A GREAT TRAVELING COMPANION.



THE PASSENGER-SIDE ILLUMINATED VANITY MIRROR, ON THE BACK OF THE VISOR.

OPTION PACKAGES

	ROYALE			ROYALE BROUGHAM		
	ISB	ISC	ISD	ISB	ISC	ISD
▶ 55/45 DIVIDED BENCH SEAT WITH RECLINERS AND STORAGE ARMREST						
▶ CRUISE CONTROL						
▶ CONVENIENCE GROUP						
▶ FLOOR MATS						
▶ ELECTRIC REAR WINDOW DEFOGGER						
▶ POWER DOOR LOCKS						
▶ POWER WINDOWS						
▶ DOOR EDGE MOLDINGS						
▶ POWER ANTENNA						
▶ POWER DRIVER'S SEAT						
▶ REMOTE LOCK CONTROLS						
▶ REMINDER PACKAGE						
▶ AUTOMATIC AIR CONDITIONING						
▶ DRIVER INFORMATION SYSTEM						

CUTLASS SUPREME

CUTLASS SUPREME... ONE CAR THAT DOES IT ALL. CHOOSE THE SUPREME COUPES

AND SEDANS WITH ALL THE ATTRIBUTES THAT CAN DELIVER ON THIS PROMISE... SUPREME SL, WITH AN

EXPANDED LIST OF STANDARD FEATURES... THE INTERNATIONAL SERIES, THE TRUE DRIVING ENTHUSIAST'S

SUPREME... OR SUPREME CONVERTIBLE, FOR THOSE SEEKING OPEN AIR PERFORMANCE.

▶ FRONT-WHEEL DRIVE ▶ RELIABLE 160-HORSEPOWER QUAD 4 ENGINE ▶ AUTOMATIC TRANSMISSION WITH FLOOR SHIFTER AND BUCKET SEATS ▶ AVAILABLE

NEW 24-VALVE, 3.4-LITER TWIN DUAL CAM V6 (AVAILABLE SPRING 1991) ▶ FOUR-WHEEL INDEPENDENT SUSPENSION ▶ FOUR-WHEEL POWER DISC BRAKES ▶ AVAIL-

ABLE ANTI-LOCK BRAKING SYSTEM ▶ ELECTRONIC TOUCH CONTROL AIR CONDITIONING ▶ TWO-SIDED GALVANIZED STEEL BODY PANELS PROVIDE SUPERIOR

CORROSION PROTECTION ▶ SOFT-RAY TINTED WINDOWS ▶ STAINLESS STEEL EXHAUST SYSTEM FOR LONG LIFE ▶ AVAILABLE FE3 TOURING SUSPENSION ▶ POWER

RACK-AND-PINION STEERING ▶ AVAILABLE 15" ALUMINUM STYLED WHEELS ▶ AVAILABLE SPORT APPEARANCE PACKAGE (SHOWN) ▶ THE OLDSMOBILE EDGE



ALL-NEW TWIN DUAL CAM V6

▶ 24-VALVE, 3.4-LITER V6 ENGINE

(AVAILABLE SPRING 1991) ▶ 200

HORSEPOWER @ 5000 RPM

▶ TWIN DUAL CAMS/ALUMINUM

HEADS ▶ FOUR VALVES PER

CYLINDER FOR A FREE-

BREATHING, HIGH-REVVING

ENGINE ▶ HIGH-CAPACITY OIL

PUMP PROVIDES POSITIVE

LUBRICATION ▶ OIL COOLER

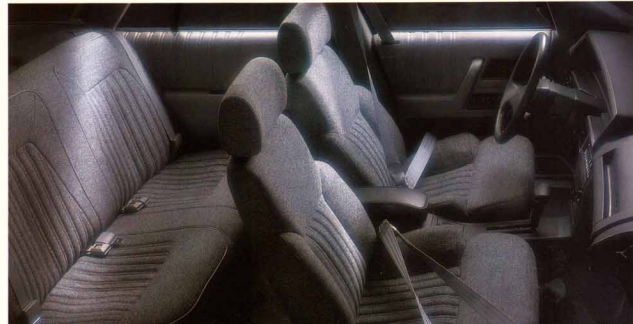
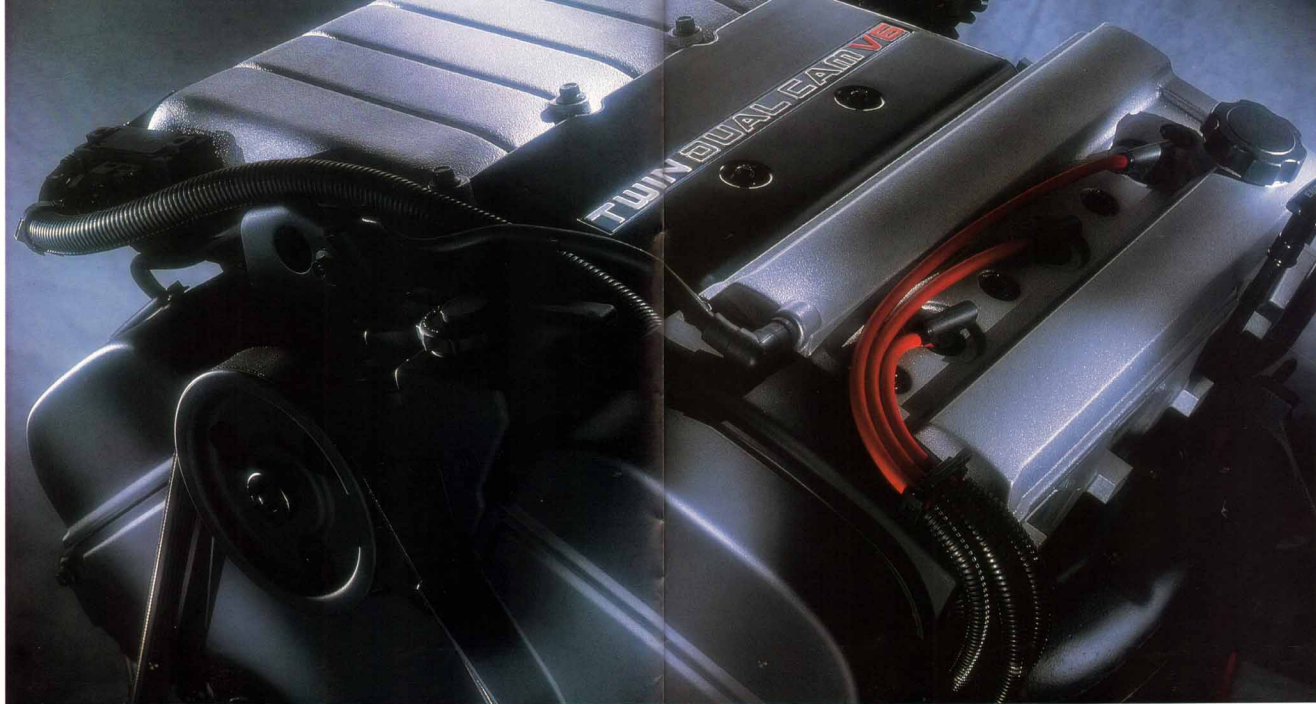
HELPS MAINTAIN OPTIMAL

OPERATING TEMPERATURE

▶ FIVE-SPEED MANUAL (COUPE)

OR FOUR-SPEED AUTOMATIC

TRANSMISSION



CUTLASS SUPREME

▶ CONTOURED SPORT BUCKET

SEATS WITH RECLINERS

▶ AIR CONDITIONING ▶ FLO-

THRU VENTILATION SYSTEM

▶ SIDE WINDOW DEFOGGERS

▶ ILLUMINATED DRIVER SIDE

DOOR LOCK ▶ AM/FM STEREO

WITH SEEK-SCAN AND DIGITAL

CLOCK ▶ SPORT CONSOLE

WITH FLOOR SHIFTER

CUTLASS SUPREME'S STANDARD
CONTOUR SPORT BUCKET SEATS

THE INSTRUMENT PANEL RALLYE
GAGE CLUSTER, STANDARD ON
INTERNATIONAL SERIES, AND
AVAILABLE ON CUTLASS SUPREME
AND SUPREME SL MODELS
(SHOWN AT FAR LEFT)



CUTLASS SUPREME SL

- ▶ FRONT-WHEEL DRIVE
- ▶ 3.1-LITER V6 ENGINE
- ▶ FOUR-SPEED AUTOMATIC TRANSMISSION
- ▶ POWER RACK-AND-PINION STEERING
- ▶ FOUR-WHEEL INDEPENDENT SUSPENSION
- ▶ 15" ALUMINUM WHEELS WITH MICHELIN TIRES
- ▶ TWO-SIDED GALVANIZED STEEL BODY PANELS FOR CORROSION PROTECTION
- ▶ FOUR-WHEEL POWER DISC BRAKES
- ▶ POWER TRUNK RELEASE
- ▶ CONVENIENCE GROUP FEATURES ARE STANDARD
- ▶ AM/FM STEREO WITH SEEK-SCAN AND AUTO-REVERSE CASSETTE
- ▶ AVAILABLE ALL-NEW 3.4-LITER ENGINE [AVAILABLE SPRING 1991]



*THE AVAILABLE POWER
ASTROROOF, AVAILABLE ON
CUTLASS SUPREME SL AND
INTERNATIONAL SERIES.*



*CUTLASS SUPREME SL WITH
STANDARD DIVIDED BENCH
FRONT SEAT AND SPLIT FOLD-
DOWN REAR SEAT PASS-THRU
TO THE TRUNK AREA.*

CUTLASS SUPREME CONVERTIBLE

▶ FRONT-WHEEL DRIVE ▶ 140-HORSEPOWER, 3.1-LITER V6 ENGINE ▶ ELECTRONIC AIR CONDITIONING MAINTAINS CONSTANT TEMPERATURE ▶ FOUR-WHEEL POWER DISC BRAKES ▶ ILLUMINATED DRIVER-SIDE DOOR LOCK ▶ POWER SIDE WINDOWS WITH AUTO-DOWN FEATURE ▶ SOFT-RAY TINTED GLASS ▶ FULL-SIZE REAR SEATING FOR THREE ▶ 15" ALUMINUM WHEELS ▶ ONE OF THE LARGEST CONVERTIBLE TRUNKS AVAILABLE ▶ POWER TRUNK RELEASE ▶ FOUR-WHEEL INDEPENDENT SUSPENSION ▶ DUAL REMOTE CONTROLLED OUTSIDE MIRRORS ▶ FULL HEADLINER CONTRIBUTES TO INTERIOR QUIET AND COMFORT ▶ AVAILABLE LEATHER IN SEATING AREAS ▶ AVAILABLE ANTI-LOCK BRAKING SYSTEM



THE CUTLASS SUPREME
CONVERTIBLE DOES NOT SACRIFICE
REAR SEATING ROOM FOR STORAGE
OF THE CONVERTIBLE TOP



CUTLASS SUPREME INTERNATIONAL SERIES

▶ FRONT-WHEEL DRIVE ▶ 140-HORSEPOWER, 3.1-LITER V6 ENGINE ▶ TOURING SUSPENSION ▶ AVAILABLE ANTI-LOCK BRAKING SYSTEM ▶ AUTOMATIC COMFORT CONTROL AIR CONDITIONING ▶ ELECTRICALLY OPERATED OUTSIDE MIRRORS ▶ RALLYE INSTRUMENT GAGE CLUSTER ▶ REMOTE LOCK FEATURE FOR DOORS AND TRUNK ▶ 16" ALUMINUM WHEELS ▶ DUAL STAINLESS STEEL EXHAUST FOR LONG LIFE AND PERFORMANCE ▶ MULTI-ADJUSTABLE FRONT BUCKET SEATS ▶ TILT-WHEEL STEERING WITH TOUCH CONTROLS FOR STEREO AND CLIMATE ▶ FOG LAMPS ▶ AM/FM STEREO WITH SEEK-SCAN, AUTO-REVERSE CASSETTE ▶ AVAILABLE NEW 200-HORSEPOWER, 24-VALVE, 3.4-LITER TWIN DUAL CAM V6 (AVAILABLE SPRING 1991) ▶ AVAILABLE COMPACT DISC PLAYER ▶ AVAILABLE LEATHER IN SEATING AREAS



THE INTERIOR OF THE CUTLASS SUPREME INTERNATIONAL SERIES, SHOWN WITH AVAILABLE LEATHER TRIM IN THE SEATING AREAS. THE REAR SPLIT SEATS ON SEDAN MODELS FOLD DOWN TO CREATE MORE STORAGE SPACE AND ALLOW ACCESS TO THE TRUNK FROM INSIDE.

CUTLASS SUPREME



CUTLASS SUPREME WITH SPORT APPEARANCE PACKAGE SHOWN ABOVE

CUTLASS SUPREME DIMENSIONS

	COUPE	SEDAN		COUPE	SEDAN
WHEELBASE (IN)	107.5	107.5	HEIGHT (IN)	53.3	54.8
TRACK, FRONT/REAR (IN)	59.5/50.0	59.5/50.0	WEIGHT, CURB (LBS)	3087	3206
TIRE SIZE (STD)	P195/73R14	P195/73R14	HEADROOM, FRONT/REAR (IN)	37.8/37.1	38.8/38.4
WHEEL SIZE (STD)	14x5.5	14x5.5	LEGROOM, FRONT/REAR (IN)	42.3/34.8	42.4/36.2
BRAKE TYPE, FRONT/REAR	DISC/DISC	DISC/DISC	SHOULDER ROOM, FRONT/REAR (IN)	57.6/57.2	57.4/56.0
FUEL TANK (GALS)	16.5	16.5	SEATING CAPACITY	5	5
LENGTH (IN)	192.3	192.2	TRUNK CAPACITY (CU FT)	15.5	15.5
WIDTH (IN)	71.0	71.0			

NOTE: DIMENSIONS APPLY TO CUTLASS SUPREME. OTHER MODELS MAY VARY.

CUTLASS SUPREME POWERTRAIN SPECIFICATIONS

	3.4 LITER V6*	3.1 LITER V6	QUAD-4
ENGINE	3.4 LITER (207 CU. IN.)	3.1 LITER (191 CU. IN.)	2.3 LITER (140 CU. IN.)
DISPLACEMENT	207	191	140
ENGINE TYPE	DOHC V6	DOHC V6	DOHC V4
BRAKE HP	200 @ 5200 (MANUAL), 200 @ 5000 (AUTO)	140 @ 4400	155 @ 5200
NET TORQUE (LBS. FT.)	25 @ 4000	18 @ 3000	15 @ 5200
COMPRESSION RATIO	9.2:1	8.8:1	9.5:1
FUEL MANAGEMENT	MULTIPOINT INJECTION	MULTIPOINT INJECTION	MULTIPOINT INJECTION
AVAILABILITY	STANDARD ON INTL. SERIES, OPTIONAL ON SUPREME AND SL	STANDARD ON SL AND CONVERTIBLE, OPTIONAL ON SUPREME AND INTL. SERIES	STANDARD ON SUPREME
TRANSAXLE	5-SPEED MANUAL (COUPE ONLY) OR 4-SPEED AUTOMATIC	4-SPEED AUTOMATIC	3-SPEED AUTOMATIC
SUSPENSION/HANDLING			
FRONT/REAR	4 WHEEL INDEPENDENT WITH MACPHERSON STRUT/TRANSVERSE FIBERGLASS LEAF SPRING		
FRONT TURNING DIAMETER, CURB TO CURB (FT)	40		
	*AVAILABLE SPRING 1991		

WHEELS

14" DELUXE WHEEL DISC STANDARD ON CUTLASS SUPREME

15" ALUMINUM-STYLED WHEEL STANDARD ON SL AND CONVERTIBLE, OPTIONAL ON CUTLASS SUPREME

16" ALUMINUM-STYLED WHEEL STANDARD ON INTL. SERIES, INCLUDED WITH SPORT APPEARANCE PACKAGE ON CONVERTIBLE AND WITH 3.4 LITER ENGINE PACKAGE ON CUTLASS SUPREME AND SL



EXTERIOR COLORS

WHITE 401⁴

BRIGHT RED 801⁴

MEDIUM CABINET RED METALLIC 72

CAMEL BEIGE 57^{1,2}

MULTI BLUE METALLIC 23^{1,2}

BLACK SAPPHIRE BLUE METALLIC 28³

PLATINUM METALLIC 13^{1,4}

MEDIUM SLATE GRAY METALLIC 85^{1,2}

BLACK 41



STANDARD FEATURES

CUTLASS SUPREME INCLUDES:

- 4 WHEEL INDEPENDENT SUSPENSION
- 4 WHEEL POWER DISC BRAKES
- POWER BACK-AND-FORWARD STEERING
- 14" WHEELS WITH DELUXE DISCS
- ALL-SEASON RADIAL BSW TIRES
- 2 SIDED GALVANIZED STEEL BODY PANELS
- STAINLESS STEEL EXHAUST SYSTEM
- AIR CONDITIONING
- AM/FM STEREO WITH DIGITAL CLOCK
- DUAL OUTSIDE MIRRORS
- SIDE WINDOW DEFOGGERS
- FRONT BUCKET SEATS
- AUTOMATIC FRONT LAP/SHOULDER SAFETY BELTS
- REAR LAP/SHOULDER SAFETY BELTS, OUTBOARD POSITIONS
- FLOOR CONSOLE WITH SHIFTER
- WET ARM WIPER SYSTEM

CUTLASS SUPREME SL AND CONVERTIBLE ALSO INCLUDE:

- 55/45 DIVIDED BENCH FRONT SEAT (SL)
- REAR SEAT PASS/THRU (SL)
- COLLIMN SHIFTER (SL)
- TOURING SUSPENSION COMPONENTS

- (CONVERTIBLE)
- UNDER HOOD AND TRUNK LAMPS
- TRUNK CARGO NET
- DOOR MAP-STORAGE POCKETS
- AUTO-REVERSE CASSETTE AND EXTENDED RANGE SPEAKERS
- 15" ALUMINUM WHEELS
- TOURING TIRES
- POWER TRUNK LID LOCK RELEASE
- POWER FOLDING TOP (CONVERTIBLE)
- POWER WINDOWS (CONVERTIBLE)
- SPLIT-FOLDING REAR SEATS (SEDAN)

CUTLASS SUPREME INTERNATIONAL SERIES ALSO INCLUDES:

- TOURING SUSPENSION
- AUTOMATIC AIR CONDITIONING
- SPECIAL RATIO STEERING
- POWER ARTICULATING BUCKET SEATS
- REAR BUCKET SEATS (COUPE)
- RALLYE INSTRUMENT CLUSTER
- FLOOR MATS
- LEATHER-WRAPPED STEERING WHEEL
- DUAL EXHAUST SYSTEM
- REMOTE LOCK CONTROLS
- TILT-WHEEL STEERING
- STEERING WHEEL TOUCH CONTROLS FOR CLIMATE AND RADIO
- ELECTRIC OUTSIDE MIRRORS

- 16" ALUMINUM WHEELS
- PERFORMANCE TIRES
- FOGLAMPS
- PULSE WIPERS
- CRUISE CONTROL
- HIGH-CAPACITY COOLING
- LUGGAGE COMPARTMENT PASS-THRU (COUPE)

OPTIONAL FEATURES

- 55/45 DIVIDED BENCH FRONT SEAT WITH CENTER ARMREST
- HEAD-UP INSTRUMENTATION
- 16" DECK LID LUGGAGE CARRIER
- LEATHER SEATING AREAS
- AM/FM STEREO WITH CASSETTE, EXTENDED RANGE SPEAKERS
- AM/FM STEREO WITH CASSETTE, GRAPHIC EQUALIZER, 8 SPEAKER SYSTEM
- AM/FM STEREO WITH COMPACT DISC, 8 SPEAKER SYSTEM
- TWIN DUAL CAM V6 ENGINE PACKAGE, INCLUDING 24-VALVE 3.4 LITER ENGINE, P3 TOURING SUSPENSION, HIGH-CAPACITY COOLING, 16" ALUMINUM WHEELS, PERFORMANCE TIRES, AND DUAL EXHAUST SYSTEM (AVAILABLE SPRING 1991)
- NOTE: AVAILABILITY Varies BY MODEL. SEE YOUR DEALER FOR DETAILS.



THE AVAILABLE FULL-FREQUENCY COMPACT DISC PLAYER LETS YOU TAKE THE BENEFIT OF HIGH-LEVEL SOUND REPRODUCTION ON THE ROAD. IT ALSO FEATURES AM/FM STEREO SEEK SCAN.



THE AVAILABLE HEAD-UP DISPLAY ON THE INTERNATIONAL SERIES PROJECTS THE VEHICLES SPEED ONTO THE WINDSHIELD, FREEING THE DRIVER FROM CUTLASS SUPREME LOOKING DOWN AT THE SPEEDOMETER.



THE 160-HORSEPOWER, DUAL OVERHEAD CAM QUAD-4 ENGINE IS STANDARD ON CUTLASS SUPREME.



THE AVAILABLE DRIVER INFORMATION SYSTEM GIVES DIGITAL READOUT OF FUEL ECONOMY, AMOUNT OF FUEL USED, ESTIMATED ARRIVAL TIME, ESTIMATED OIL LIFE, AVERAGE SERVICE REMINDERS, ETC. (AVAILABLE 11/90.)



THE TRUNK ON SUPREME FEATURES A LOW LIFT-OVER HEIGHT FOR EASY ACCESS, AND A CARGO NET THAT HELPS SECURE SMALLER ITEMS THAT MIGHT OTHERWISE SLIDE AROUND IN THE TRUNK SPACE.

OPTION PACKAGES

ITEMS LISTED BELOW ARE ALSO AVAILABLE AS INDIVIDUAL OPTIONS (EXCEPT ON INTL. SERIES)	SUPREME			SUPREME SL			CONVERTIBLE			INTL. SERIES	
	ISB	ISC	ISD	ISB	ISC	ISD	ISB	ISC	ISD	ISB	ISC
CRUISE CONTROL											
TILT-WHEEL STEERING											
PULSE WIPERS											
APPEARANCE/MOLDING PACKAGE											
ELECTRIC OUTSIDE MIRRORS											
FLOOR MATS, FRONT/REAR											
CONVENIENCE GROUP											
POWER ANTENNA											
REMOTE LOCK CONTROLS											
POWER WINDOWS											
POWER SEAT (DRIVER SIDE)											
AUTOMATIC AIR CONDITIONING											
STEERING WHEEL TOUCH CONTROLS FOR CLIMATE AND RADIO											

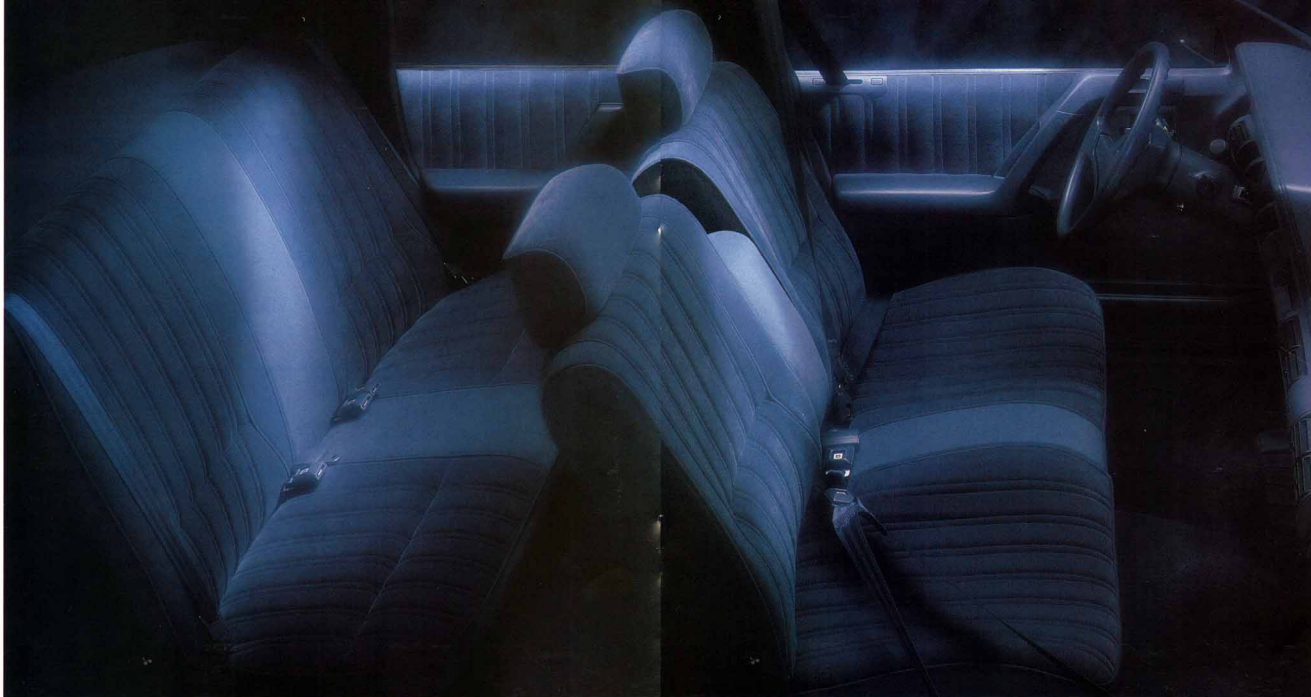
CUTLASS CIERA...THE FAMILY CLASSICS EVERYONE CAN DEPEND ON CHOOSE

FROM THE CIERA, OLDSMOBILE'S BEST MID-SIZE VALUE... CIERA S, A STEP ABOVE IN STANDARD

FEATURES AND COMFORT... OR CIERA SL, OUR TOP-OF-THE-LINE MODEL.

- ▶ SIX-PASSENGER COUPE OR SEDAN
- ▶ 2.5-LITER TECH IV ENGINE WITH ELECTRONIC FUEL INJECTION
- ▶ FRONT-WHEEL DRIVE
- ▶ MACPHERSON STRUT FRONT SUSPENSION
- ▶ POWER RACK-AND-PINION STEERING
- ▶ POWER FRONT DISC BRAKES
- ▶ BASE-COAT/CLEAR-COAT PAINT
- ▶ 14" WHEELS WITH ALL-SEASON TIRES
- ▶ THREE-SPEED AUTOMATIC TRANSMISSION
- ▶ SOFT-RAY TINTED WINDOWS
- ▶ DUAL OUTSIDE MIRRORS
- ▶ SIDE WINDOW DEFOGGER
- ▶ THE OLDSMOBILE EDGE





CUTLASS CIERA S

▶ FRONT BENCH SEAT WITH CENTER

FOLDING ARMREST ▶ FULL-FOAM

CUSHION SEATS ▶ AVAILABLE

55/45 DIVIDED BENCH SEAT WITH

POWER CONTROLS ▶ NEW

INSTRUMENT PANEL WITH

TRIP ODOMETER AND TEM-

PERATURE GAGE ▶ AM/FM

STEREO WITH SEEK-SCAN, DUAL

REAR SPEAKERS AND DIGITAL

CLOCK ▶ MAP POCKETS

LOCATED IN DOORS FOR EASY

ACCESS ▶ AVAILABLE POWER

WINDOWS, DOOR LOCKS

AND TRUNK RELEASE



THE REDESIGNED INSTRUMENT PANEL
FEATURES ANALOG DISPLAY.



CUTLASS CIERA SL

- ▶ MID-SIZE, SIX-PASSENGER FAMILY SEDAN
- ▶ 3300 V6 ENGINE WITH MULTIPORT FUEL INJECTION
- ▶ FRONT-WHEEL DRIVE
- ▶ FOUR-SEASON AIR CONDITIONING
- ▶ POWER RACK-AND-PINION STEERING
- ▶ POWER FRONT DISC BRAKES
- ▶ THREE-SPEED AUTOMATIC TRANSMISSION
- ▶ BASE-COAT/CLEAR-COAT PAINT
- ▶ MACPHERSON STRUT FRONT SUSPENSION
- ▶ CONVENIENCE GROUP FEATURES
- ▶ POWER TRUNK RELEASE
- ▶ AM/FM STEREO WITH SEEK-SCAN AND AN AUTO-REVERSE CASSETTE
- ▶ THE OLDSMOBILE EDGE



*THE SPACIOUS INTERIOR
OF THE CUTLASS CIERA SL.*

*THE CUTLASS CIERA.
OLDSMOBILE'S MOST
AFFORDABLE MID-SIZE.*





CUTLASS CALAIS... SMART, SPIRITED AND SURPRISINGLY AFFORDABLE. CHOOSE FROM CALAIS,

OUR LOWEST PRICED OLDSMOBILE... CALAIS S, A STEP UP IN STANDARD FEATURES... CALAIS SL, DISTINCTIVE

AND EQUIPPED WITH YOUR COMFORT IN MIND... THE QUAD 442, PLENTY OF PERFORMANCE FOR THE MONEY

...OR THE INTERNATIONAL SERIES, SOPHISTICATED PERFORMANCE WITH WORLDWIDE APPEAL

▶ FIVE-PASSENGER TWO- AND FOUR-DOOR MODELS ▶ FRONT-WHEEL DRIVE ▶ 2.5-LITER TECH IV ENGINE WITH ELECTRONIC FUEL INJECTION ▶ FIVE-SPEED MANUAL
TRANSMISSION ▶ MACPHERSON STRUT FRONT SUSPENSION ▶ POWER FRONT DISC BRAKES ▶ POWER RACK-AND-PINION STEERING ▶ COMPOSITE HALOGEN HEAD-
LAMPS ▶ SIDE WINDOW DEFOGGER ▶ 14" WHEELS WITH ALL-SEASON STEEL-BELTED TIRES ▶ CONTOUR FRONT BUCKET SEATS ▶ CENTER CONSOLE WITH INTEGRAL
ARMREST ▶ AM/FM STEREO WITH SEEK-SCAN AND DIGITAL CLOCK ▶ AVAILABLE QUAD 4 ENGINE WITH AUTOMATIC TRANSMISSION ▶ THE OLDSMOBILE EDGE

CUTLASS CALAIS



CUTLASS CALAIS S
SEDAN AND COUPE

▶ FRONT-WHEEL DRIVE ▶ 2.5-LITER TECH IV ENGINE WITH ELECTRONIC FUEL INJECTION ▶ FIVE-SPEED

DISC BRAKES ▶ POWER RACK-AND-PINION STEERING ▶ AVAILABLE 16-VALVE, 160-HORSEPOWER, 2.3-LITER

MANUAL TRANSMISSION (AUTOMATIC AVAILABLE) ▶ MACPHERSON STRUT FRONT SUSPENSION ▶ 14" SPORT WHEELS WITH ALL-SEASON RADIAL TIRES ▶ POWER FRONT

QUAD 4 ENGINE ▶ AVAILABLE REMOTE LOCK CONTROL PACKAGE ▶ AVAILABLE DRIVER INFORMATION SYSTEM ▶ AVAILABLE FE3 HANDLING SUSPENSION SYSTEM



▶ FRONT-WHEEL DRIVE ▶ 16-VALVE, 160-HORSEPOWER, 2.3-LITER QUAD 4 ENGINE ▶ FOUR-SEASON AIR CONDITIONING

▶ TWO-TONE PAINT TREATMENT ▶ SPLIT-FOLDING REAR SEAT
▶ AM/FM STEREO WITH CASSETTE AND DIGITAL CLOCK ▶ AUTOMATIC TRANSMISSION
▶ WITH FLOOR SHIFTER ▶ 14" ALUMINUM-STYLED WHEELS

▶ POWER RACK-AND-PINION STEERING ▶ AVAILABLE FE3 HANDLING SUSPENSION ▶ AVAILABLE 3300 V6 ENGINE
▶ WITH MULTIPOINT FUEL INJECTION ▶ THE OLDSMOBILE EDGE

CUTLASS CALAIS SL



THE 160 HORSEPOWER, DUAL
OVERHEAD CAM QUAD 4 ENGINE
STANDARD ON CUTLASS
CALAIS SL



HIGH-OUTPUT QUAD 4 ENGINE.

CUTLASS CALAIS QUAD 442

▶ A TRUE ENTHUSIAST'S

SPORT COUPE ▶ 180-HORSE-

POWER, 16-VALVE HIGH-

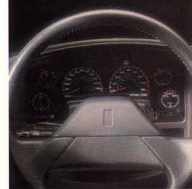
OUTPUT QUAD 4 ENGINE WITH

DUAL OVERHEAD CAMS

▶ FIVE-SPEED MANUAL SPORT

RATIO TRANSMISSION

CONTOUR RECLINING BUCKET SEATS



QUAD 442'S RALLYE GAGE CLUSTER.

▶ HANDLING SUSPENSION WITH

VARIABLE-EFFORT STEERING

▶ LEATHER-WRAPPED STEERING

WHEEL ▶ 15" ALUMINUM WHEELS

AVAILABLE WITH PERFORMANCE

TIRES (AVAILABLE 11/90) ▶ REAR

AERO WING ▶ FULL INSTRUMENT-

TATION INCLUDING TACHOMETER

▶ THE OLDSMOBILE EDGE

LEATHER-WRAPPED FIVE-SPEED SHIFTER.





CUTLASS CALAIS INTERNATIONAL SERIES

- ▶ FRONT-WHEEL DRIVE ▶ 180-HORSEPOWER, 16-VALVE HIGH-OUTPUT QUAD 4 ENGINE ▶ DUAL EXHAUST OUTLETS ▶ ANTI-LOCK BRAKING SYSTEM ▶ HANDLING
- SUSPENSION WITH VARIABLE-EFFORT STEERING ▶ 16" ALUMINUM WHEELS WITH PERFORMANCE TIRES ▶ AIR CONDITIONING ▶ DRIVER INFORMATION SYSTEM
- ▶ RALLYE INSTRUMENT PANEL GAGE CLUSTER INCLUDING TACHOMETER ▶ POWER TRUNK-LID RELEASE ▶ POWER RACK-AND-PINION STEERING ▶ GROUND EFFECTS
- PACKAGE WITH INTEGRATED FOGLAMPS ▶ LEATHER-WRAPPED TILT-WHEEL AND FLOOR SHIFTER ▶ SPLIT-FOLDING REAR SEATS WITH PASSTHRU ▶ STORAGE
- CONSOLE WITH ARMREST ▶ TRUNK CARGO NET ▶ AM/FM STEREO WITH SEEK-SCAN, AUTO-REVERSE CASSETTE AND DIGITAL CLOCK ▶ THE OLDSMOBILE EDGE



THE AVAILABLE CUSTOM LEATHER TRIM CONTOURED SEATS IN THE INTERNATIONAL SERIES PROVIDE EXCEPTIONAL COMFORT AND SUPPORT IN ALL DRIVING SITUATIONS.

CUTLASS CALAIS



CUTLASS CALAIS SL SHOWN ABOVE

EXTERIOR COLORS

- WHITE 40
- BRIGHT RED 81¹
- MEDIUM GARNET RED METALLIC 72
- DARK GARNET RED METALLIC 76²
- LIGHT CAMEL METALLIC 67^{1,2,3}
- LIGHT SAPPHIRE BLUE METALLIC 22⁴
- MEDIUM SAPPHIRE BLUE METALLIC 27⁵
- PLATINUM METALLIC 13
- MEDIUM SLATE GRAY METALLIC 85
- BLACK 41

1. N.A. ON CUTLASS CALAIS
 2. N.A. ON CALAIS SL
 3. N.A. ON CALAIS INTL. SERIES
 NOTE: CUTLASS CALAIS SL FEATURES A TWO-TONE PAINT SCHEME. A STANDARD LOWER BODY ACCENT COLOR, PLATINUM METALLIC 13, IS INCLUDED WITH ALL AVAILABLE COLORS SHOWN ABOVE EXCEPT PLATINUM METALLIC 13 AND WHITE 40. THOSE TWO COLORS HAVE AN ACCENT COLOR OF MEDIUM SLATE GRAY METALLIC 85.

STANDARD FEATURES

- CUTLASS CALAIS INCLUDES:**
- ▶ MACPHERSON STRUT FRONT/COIL SPRING REAR SUSPENSION
 - ▶ POWER FRONT DISC/REAR DRUM BRAKES
 - ▶ POWER RACK AND PINION STEERING
 - ▶ 14" WHEELS WITH DELUXE DISCS
 - ▶ ALL-SEASON RADIAL BSW TIRES
 - ▶ CONSOLE WITH FLOOR SHIFTER
 - ▶ TRIP ODOMETER
 - ▶ AM/FM STEREO WITH DIGITAL CLOCK
 - ▶ CONTOUR FRONT BUCKET SEATS
 - ▶ AUTOMATIC FRONT LAP/SHOULDER SAFETY BELTS
 - ▶ REAR LAP/SHOULDER SAFETY BELTS, OUTBOARD POSITIONS
- CUTLASS CALAIS S ALSO INCLUDES:**
- ▶ MAPLIGHTS, READING LAMPS AND ADDITIONAL COURTESY LAMPS
 - ▶ REMOTE DRIVER'S SIDE MIRROR
 - ▶ DELUXE MOLDINGS
 - ▶ 14" SPORT WHEELS

▶ RECLINING FRONT SEATS

- CUTLASS CALAIS SL ALSO INCLUDES:**
- ▶ AIR CONDITIONING
 - ▶ TRUNK CARGO NET
 - ▶ DOOR MAP-STORAGE POCKET
 - ▶ UNDER-HOOD CONVENIENCE LAMP
 - ▶ VISOR MIRRORS
 - ▶ AUTO-REVERSE CASSETTE AND EXTENDED RANGE SPEAKERS
 - ▶ 4-WAY DRIVER'S SEAT ADJUSTER
 - ▶ TOURING RADIAL BSW TIRES
 - ▶ SPLIT-FOLDING REAR SEAT
 - ▶ LOWER BODY ACCENT COLOR
 - ▶ 14" ALUMINUM WHEELS

- ▶ RALLYE INSTRUMENT CLUSTER
- ▶ LEATHER-WRAPPED STEERING WHEEL
- ▶ TILT-WHEEL STEERING
- ▶ LEATHER-WRAPPED FLOOR SHIFTER
- ▶ 16" ALUMINUM WHEELS
- ▶ PULSE WIPERS
- ▶ ILLUMINATED VISOR MIRRORS
- ▶ POWER TRUNK LID LOCK RELEASE
- ▶ TRUNK CARGO NET
- ▶ PERFORMANCE RADIAL BSW TIRES

OPTIONAL FEATURES

- ▶ REMOTE CONTROL POWER DOOR LOCKS
- ▶ POWER WINDOWS
- ▶ ELECTRIC REAR WINDOW DEFOGGER
- ▶ AIR CONDITIONING
- ▶ HES HANDLING SUSPENSION, INCLUDING VARIABLE-EFFORT STEERING, SPECIAL STEERING WHEEL, ALUMINUM WHEELS
- ▶ ENGINE LOCK HEATER
- ▶ CRUISE CONTROL
- ▶ ALUMINUM WHEELS AND TOURING TIRES
- ▶ WHITE-STRIPES TIRES

- ▶ RALLYE INSTRUMENT CLUSTER
- ▶ DECK-LID LUGGAGE CARRIER
- ▶ INCLUDE 442 SPORT PERFORMANCE PACKAGE, INCLUDING GOLD STRIPE, BLACK TRIM, HIGH-CUTTRIT QUAID-4 ENGINE, 5-SPEED MANUAL TRANSMISSION, RALLYE INSTRUMENT CLUSTER, 15" WHEELS, PERFORMANCE TIRES, REAR AERO WING, VARIABLE-EFFORT STEERING, HANDLING SUSPENSION, AND LEATHER-WRAPPED STEERING WHEEL
- ▶ LEATHER SEATING AREAS
- ▶ AM/FM STEREO WITH CASSETTE AND EXTENDED RANGE SPEAKERS
- ▶ AM/FM STEREO WITH COMPACT DISC, EXTENDED RANGE SPEAKERS AND THEFT-DETERRENT
- ▶ AM STEREO/FM STEREO WITH CASSETTE AND GRAPHIC EQUALIZER

NOTE: AVAILABILITY Varies BY MODEL. SEE YOUR DEALER FOR DETAILS.
 *RECEIVES "QUAM" AM STEREO BROADCASTS, MOST AM STEREO STATIONS ACROSS THE COUNTRY BROADCAST IN "QUAM" BUT SOME DO NOT CHECK WITH YOUR LOCAL STATIONS FOR COMPATIBILITY IN YOUR AREA.



THE DRIVER INFORMATION SYSTEM GIVES DIGITAL READOUT ON FUEL ECONOMY, AMOUNT OF FUEL USED, ESTIMATED OIL LIFE, AUTOMATED SERVICE REMINDERS AND MORE.

INTERNATIONAL SERIES AND SL REAR SPLIT SEATS FOLD DOWN TO CREATE MORE STORAGE SPACE AND ALLOW ACCESS TO THE TRUNK FROM INSIDE.

WITH THE REMOTE LOCK CONTROL PACKAGE, YOU CAN LOCK OR UNLOCK ALL DOORS AND THE TRUNK FROM AS FAR AS FIFTEEN FEET AWAY.

THE AVAILABLE DELCO ETR AM STEREO/FM STEREO SYSTEM INCLUDES SEEK, SCAN, AUTO REVERSE CASSETTE WITH MUSIC SEARCH, AND A GRAPHIC EQUALIZER FOR SUPERIOR SOUND CONTROL.*

THE NEW CARGO NET HELPS SECURE SMALLER ITEMS THAT MIGHT OTHERWISE SLIDE AROUND IN THE TRUNK SPACE (SL AND INTERNATIONAL SERIES ONLY).

CUTLASS CALAIS DIMENSIONS				
	COUPE	SEDAN	COUPE	SEDAN
WHEELBASE (IN)	103.4	103.4	103.4	103.4
TRACK, FRONT/REAR (IN)	55.8/55.4	55.8/55.4	55.8/55.4	55.8/55.4
TIRE SIZE (STD)	P185/70R14	P185/70R14	P185/70R14	P185/70R14
WHEEL SIZE (STD)	14 x 6	14 x 6	14 x 6	14 x 6
BRAKE TYPE, FRONT/REAR	DISC/DRUM	DISC/DRUM	DISC/DRUM	DISC/DRUM
FUEL TANK (GALS)	13.6	13.6	13.6	13.6
LENGTH (IN)	179.3	179.3	179.3	179.3
WIDTH (IN)	66.9	66.9	66.9	66.9
HEIGHT (IN)	52.4	52.4	52.4	52.4
WEIGHT, CURB (LBS)	2988	2988	2988	2988
HEADROOM, FRONT/REAR (IN)	37.9/37.2	37.9/37.2	37.9/37.2	37.9/37.2
LEGROOM, FRONT/REAR (IN)	42.9/32.8	42.9/32.8	42.9/32.8	42.9/32.8
SHOULDER ROOM, FRONT/REAR (IN)	53.8/50.1	53.8/50.1	53.8/50.1	53.8/50.1
SEATING CAPACITY	5	5	5	5
TRUNK CAPACITY (CU. FT.)	13.2	13.2	13.2	13.2

NOTE: DIMENSIONS APPLY TO CUTLASS CALAIS. OTHER MODELS MAY VARY.

CUTLASS CALAIS POWERTRAIN SPECIFICATIONS				
ENGINE	2.5-LITER TECH IV	QUAD 4	HIGH-OUTPUT QUAD 4	3300 V6
DISPLACEMENT	2.5-LITER (158 CU. IN.)	2.3-LITER (138 CU. IN.)	2.3-LITER (138 CU. IN.)	3300 (204 CU. IN.)
ENGINE TYPE	I-4	DOHC I-4	DOHC I-4	I-6
BRAKE HP	110 @ 2000	160 @ 2000	180 @ 2000	180 @ 2000
NET TORQUE (LBS. FT.)	135 @ 2000	155 @ 2000	160 @ 2000	185 @ 2000
COMPRESSION RATIO	8.3:1	9.5:1	10.0:1	9.0:1
FUEL MANAGEMENT, FUEL INJECTED	ELECTRONIC	ELECTRONIC	MULTIPOINT	MULTIPOINT
AVAILABILITY	STANDARD ON CALAIS	STANDARD ON CALAIS S AND INTL. SERIES	STANDARD ON INTL. SERIES, OPTIONAL ON S	OPTIONAL ON SL
TRANSAXLE	5-SPEED MANUAL OR 3-SPEED AUTOMATIC	3-SPEED AUTOMATIC	5-SPEED MANUAL	3-SPEED AUTOMATIC
SUSPENSION/HANDLING	MACPHERSON STRUT/COIL SPRING			
FRONT/REAR	35.4			
FRONT TURNING DIAMETER, CURB TO CURB (FT.)	35.4			

- WHEELS**
- 14" DELUXE WHEEL DISC STANDARD ON CALAIS
 - 14" SPORT WHEEL WITH STAINLESS STEEL TRIMMING STANDARD ON CALAIS
 - 15" ALUMINUM STYLED WHEEL INCLUDED IN QUAD 442 PACKAGE (N.A. ON EARLY MODELS)
 - 14" ALUMINUM STYLED WHEEL INCLUDED IN QUAD 442 PACKAGE (EARLY MODELS)
 - 14" ALUMINUM STYLED WHEEL STD. ON CALAIS SL, OPT. ON CALAIS S WITH BSW TIRE
 - 16" ALUMINUM STYLED WHEEL STANDARD ON CALAIS INTL. SERIES



	OPTION PACKAGES							
	CALAIS		CALAIS S		CALAIS SL		INTL. SERIES	
	ISB	ISC	ISB	ISC	ISB	ISC	ISB	ISC
▶ CRUISE CONTROL
▶ TILT-WHEEL STEERING
▶ BODY SIDE MOLDING
▶ POWER DOOR LOCKS
▶ AIR CONDITIONING
▶ PULSE WIPERS
▶ REMOTE OUTSIDE MIRROR (DRIVER)
▶ UNDER-HOOD CONVENIENCE LAMP
▶ COVERED VISOR MIRRORS
▶ POWER WINDOWS
▶ POWER ANTENNA
▶ REMOTE LOCK CONTROLS
▶ DRIVER INFORMATION SYSTEM
▶ ELECTRIC REAR WINDOW DEFOGGER
▶ REMOTE OUTSIDE MIRRORS
▶ ILLUMINATED VISOR MIRRORS
▶ POWER DRIVER'S SEAT
▶ FLOOR MATS
▶ 4-WAY MANUAL DRIVER'S SEAT ADJUSTER

CUTLASS CRUISER SL

CUTLASS CRUISER...THESE MID-SIZE WAGONS ARE FAMILY CLASSICS THAT

MAKE EVERY OUTING A PLEASURE CRUISE. CHOOSE FROM THE SIX-PASSENGER CUTLASS

CRUISER S... OR THE CUTLASS CRUISER SL, AN EIGHT-PASSENGER VERSION WITH

ADDED COMFORT AND CONVENIENCE FEATURES.

▶ POWER RACK-AND-PINION STEERING ▶ FRONT-WHEEL DRIVE ▶ 3300 V6 ENGINE WITH MULTIPOINT FUEL INJECTION ▶ FOUR-SPEED AUTOMATIC TRANSMISSION

WITH OVERDRIVE ▶ EIGHT-PASSENGER SEATING ▶ AIR CONDITIONING ▶ REDESIGNED INSTRUMENT PANEL WITH ANALOG DISPLAY ▶ 55/45 DIVIDED FRONT BENCH

SEAT ▶ REAR-FACING THIRD SEAT ▶ SPLIT-FOLDING REAR SEAT BACKS ▶ ROOFTOP LUGGAGE CARRIER ▶ AM/FM STEREO WITH SEEK-SCAN, AN AUTO-REVERSE

CASSETTE AND EXTENDED RANGE SPEAKERS ▶ TWO-WAY TAILGATE WITH GAS-ASSISTED STRUTS ▶ 74.4 CUBIC FEET OF CARGO AREA ▶ THE OLDSMOBILE EDGE



CUTLASS CRUISER



CUTLASS CRUISER SL SHOWN ABOVE

EXTERIOR COLORS

WHITE 40

FLAME RED METALLIC 74



LIGHT MAPLE RED METALLIC 78



LIGHT CAMEL METALLIC 67



CAMEL BEIGE 57



LIGHT SAPPHIRE BLUE METALLIC 22



DARK SAPPHIRE BLUE METALLIC 29



SILVER METALLIC 12



MEDIUM GRAY METALLIC 15



BLACK 41



CUTLASS CRUISER DIMENSIONS

WHEELBASE (IN)	104.9	HEIGHT (IN)	54.5
TRACK, FRONT/REAR (IN)	38.7/37.0	WEIGHT, CURB (LBS.)	2075
TIRE SIZE (STD)	P185/75R14	HEADROOM, FRONT/REAR (IN)	38.6/38.9
WHEEL SIZE (STD)	14 X 5.5	LEG ROOM, FRONT/REAR (IN)	42.1/42.7
BRAKE TYPE, FRONT/REAR	DISC/DRUM	SHOULDER ROOM, FRONT/REAR (IN)	56.2/56.2
FUEL TANK (GALS.)	15.7	SEATING CAPACITY	6 or 8
LENGTH (IN)	194.4	*CARGO CAPACITY (CU FT)	74.4
WIDTH (IN)	69.5		

CUTLASS CRUISER POWERTRAIN SPECIFICATIONS

ENGINE	2.5-LITER TECH IV	3300 V6
DISPLACEMENT	2.5 LITER (151 CU IN)	3300 (204 CU IN)
ENGINE TYPE	I4	V6
BRAKE HP	110 @ 5200	160 @ 5200
NET TORQUE (LBS. FT)	135 @ 2000	185 @ 2000
COMPRESSION RATIO	8.3:1	9.0:1
FUEL MANAGEMENT	ELECTRONIC FUEL INJECTION	MULTIPOINT INJECTION
AVAILABILITY	STANDARD ON CRUISERS	STANDARD ON CRUISERS SL, OPTIONAL ON CRUISERS

TRANSAXLE	3-SPEED AUTOMATIC	3-SPEED AUTOMATIC OR 4-SPEED AUTOMATIC
-----------------	-------------------	--

SUSPENSION/HANDLING

FRONT/REAR	MACPHERSON STRUT/COIL SPRING
FRONT TURNING DIAMETER, CURB TO CURB (FT)	38.1

WHEELS	14" DELUXE BRIGHT WHEEL DISC STANDARD ON ALL CRUISER MODELS	14" SIMULATED WIRE WHEEL DISC OPTIONAL ON ALL CRUISER MODELS	14" ALUMINUM STYLED WHEEL OPTIONAL ON ALL CRUISER MODELS, STD. W/SPORT PKG.
--------	---	--	---



STANDARD FEATURES

CUTLASS CRUISER S INCLUDES:

- ▶ MACPHERSON STRUT FRONT/COIL SPRING REAR SUSPENSION
- ▶ POWER FRONT DISC/REAR DRUM BRAKES
- ▶ POWER RACK AND PINION STEERING
- ▶ 14" WHEELS
- ▶ ALL-SEASON RADIAL WSW TIRES
- ▶ BASE COAT/CLEAR COAT PAINT
- ▶ COMPOSITE HALOGEN HEADLAMPS
- ▶ COLUMN SHIFTER
- ▶ SOFT RAY TINTED WINDOWS
- ▶ DUAL OUTSIDE MIRRORS (DRIVER'S SIDE REMOTE)
- ▶ SIDE WINDOW DEFOGGER
- ▶ CARPETED FLOOR AND LOWER DOOR PANELS
- ▶ ANALOG INSTRUMENT CLUSTER
- ▶ FRONT DOOR MAP POCKETS

OPTIONAL FEATURES

CUTLASS CRUISER SL ALSO INCLUDES:

- ▶ AM/FM STEREO WITH SPEAKERS AND DIGITAL CLOCK
- ▶ TWO-WAY TAILGATE
- ▶ CUSTOM BENCH FRONT SEAT
- ▶ SLIT-FOLDING REAR SEAT BACKS
- ▶ AUTOMATIC FRONT LAP/SHOULDER SAFETY BELTS
- ▶ REAR LAP/SHOULDER SAFETY BELTS, OUTBOARD POSITIONS
- ▶ FLOTHRU VENTILATION
- ▶ AIR CONDITIONING
- ▶ CONVENIENCE GROUP INCLUDING UNDER-HOOD LAMP, DAY-NIGHT MIRROR WITH DIAL READING LAMPS, VISOR MIRRORS, AND DRIVER-SIDE VISOR STRAP
- ▶ ROOFTOP LUGGAGE CARRIER
- ▶ AUTO REVERSE CASSETTE AND EXTENDED RANGE SPEAKERS
- ▶ 55/45 DIVIDED BENCH FRONT SEAT

REAR-FACING THIRD SEAT

OPTIONAL FEATURES

- ▶ POWER DRIVER'S SEAT
- ▶ 55/45 DIVIDED BENCH FRONT SEAT
- ▶ FRONT BUCKET SEATS
- ▶ POWER DOOR LOCKS
- ▶ POWER WINDOWS
- ▶ SIMULATED WOOD-GRAIN BODY PANELING
- ▶ ELECTRIC REAR WINDOW DEFOGGER
- ▶ AIR CONDITIONING
- ▶ ENGINE BLOCK HEATER
- ▶ CRUISE CONTROL
- ▶ WIRE WHEEL DISCS
- ▶ ALUMINUM-STYLED WHEELS
- ▶ RALLYE INSTRUMENT CLUSTER, INCLUDING SPEEDOMETER, TACHOMETER, VOLTMETER, TEMPERATURE AND OIL PRESSURE GAGES
- ▶ HIGH-CAPACITY COOLING
- ▶ SPORT APPEARANCE PACKAGE, INCLUDING

SPECIAL MOLDINGS, BLACK EXTERIOR TRIM, 14" ALUMINUM STYLED WHEELS, TOURING RADIAL BSW TIRES, FLOOR SHIFTER, LEATHER WRAPPED STEERING WHEEL AND RALLYE INSTRUMENT CLUSTER

- ▶ REAR-FACING THIRD SEAT
- ▶ AM/FM STEREO WITH AUTO-REVERSE CASSETTE AND EXTENDED RANGE SPEAKERS
- ▶ AM STEREO/FM STEREO WITH AUTO-REVERSE CASSETTE, GRAPHIC EQUALIZER AND ENHANCED SPEAKERS*
- ▶ 6-SPEAKER ENHANCED AUDIO SYSTEM
- ▶ LOAD-CARRYING PACKAGE, INCLUDING INFLATABLE REAR SHOCKS

NOTE: AVAILABILITY VARIES BY MODEL. SEE YOUR DEALER FOR DETAILS.
*RECEIVES C-GRAM AM STEREO BROADCASTS. MOST AM STEREO STATIONS ACROSS THE COUNTRY BROADCAST IN CLEAR BIT RATE TO NOT CHECK WITH YOUR LOCAL STATIONS FOR COMPATIBILITY IN YOUR AREA.



THE CUTLASS CRUISER WITH AVAILABLE SPORT APPEARANCE PACKAGE. THE PACKAGE INCLUDES SPECIAL ACCENT PAINT, ROOFTOP LUGGAGE CARRIER, 14" ALUMINUM STYLED WHEELS AND INSTRUMENT PANEL RALLYE CLUSTER.



THE REAR HATCH FEATURES GAS-ASSISTED STRUT FOR EASY LOADING AND UNLOADING.



WITH OVER 49 INCHES OF WIDTH, THE CUTLASS CRUISER HAS AN IMPRESSIVE CARGO AREA.



THE REAR-FACING THIRD SEAT IS EASILY ACCESSIBLE WITH A LOW STEP-UP HEIGHT AND HIGH HATCH HEIGHT.

OPTION PACKAGES

ITEMS LISTED BELOW ARE ALSO AVAILABLE AS INDIVIDUAL OPTIONS.

	CRUISER S			CRUISER SL	
	ISB	ISC	ISD	ISB	ISC
▶ AIR CONDITIONING					
▶ TILT-WHEEL STEERING					
▶ PULSE WIPERS					
▶ REAR WINDOW AIR DEFLECTOR					
▶ CARPETED FLOOR MATS					
▶ 55/45 DIVIDED BENCH FRONT SEAT					
▶ POWER RECLINING PASSENGER SEAT BACK					
▶ CONVENIENCE GROUP					
▶ CRUISE CONTROL					
▶ ROOFTOP LUGGAGE CARRIER					
▶ ACCESS STRIPE					
▶ DOOR EDGE MOLDINGS					
▶ ELECTRIC OUTSIDE MIRRORS					
▶ POWER DOOR AND TAILGATE LOCKS					
▶ POWER WINDOWS					
▶ POWER ANTENNA					
▶ REAR-FACING THIRD SEAT					
▶ ILLUMINATED VISOR MIRRORS					
▶ REMOTE LOCK CONTROLS					
▶ POWER SEAT (DRIVER SIDE)					

CARGO AREA DIMENSIONS

FLOOR LENGTH FROM BACK OF FRONT SEAT TO END OF FLOOR SURFACE (IN)	75.4
FLOOR LENGTH FROM BACK OF SECOND SEAT TO END OF FLOOR SURFACE (IN)	45.4
MINIMUM HORIZONTAL DISTANCE FROM TOP OF REAR OF FRONT SEAT BACK TO INSIDE OF TAILGATE AT REE (IN)	72.4
MINIMUM DISTANCE BETWEEN WHEEL HUBS AT FLOOR LEVEL (IN)	36.6
REAR-END OPENING WIDTH AT REE (IN)	49.4
MAXIMUM HEIGHT OF REAR OPENING, TAILGATE OPEN (IN)	28.7
MAXIMUM CARGO HEIGHT (IN)	31.6

CUSTOM CRUISER

CUSTOM CRUISER...THE ALL-NEW, FULL-SIZE LUXURY WAGON WHERE YOU'LL FIND

FUNCTION AT ITS FINEST. CUSTOM CRUISER DELIVERS THE UTMOST IN INNOVATIVE TECHNOLOGY,

LUXURIOUS AMENITIES AND OF COURSE, CARGO-CARRYING CAPACITY.

▶ ANTI-LOCK BRAKING SYSTEM ▶ 5.0-LITER V8 ENGINE WITH ELECTRONIC FUEL INJECTION ▶ AVAILABLE 5000-POUND TOWING PACKAGE* ▶ 22-GALLON FUEL TANK

FOR EXTENDED RANGE ▶ TWO-SIDED GALVANIZED BODY PANELS FOR CORROSION PROTECTION ▶ COMFORTABLY CARRIES EIGHT* PEOPLE OR LOTS OF CARGO

▶ FOUR-SPEED AUTOMATIC OVERDRIVE TRANSMISSION ▶ VISTA ROOF WITH SOLARCOOL GLASS ▶ HEAVY-DUTY FRONT AND REAR SUSPENSION ▶ 15" WHEELS

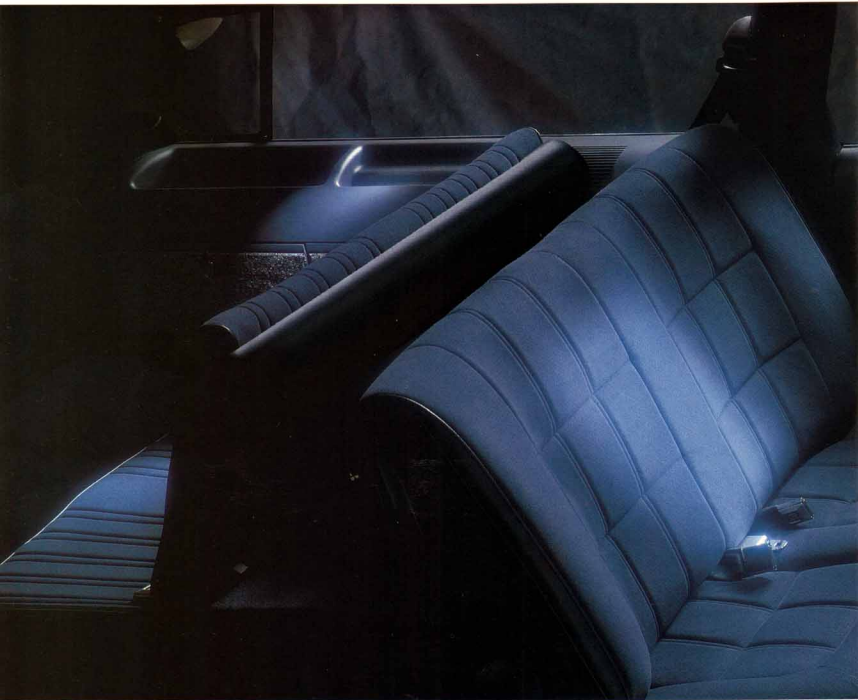
WITH ALL-SEASON TIRES ▶ ADJUSTABLE ROOFTOP LUGGAGE RACK ▶ REAR WINDOW WASHER/WIPER SYSTEM ▶ TWO-WAY TAILGATE ▶ THE OLDSMOBILE EDGE

*INCLUDING PASSENGERS, CARGO AND EQUIPMENT.



CUSTOM CRUISER

▶ DRIVER-SIDE AIR BAG ▶ FOUR-SEASON AIR CONDITIONING ▶ POWER REAR WINDOW AND TAILGATE RELEASE ▶ FRONT AND REAR LAP/SHOULDER SAFETY BELTS, OUTBOARD POSITIONS ▶ SOFT-RAY TINTED WINDOWS ▶ DIVIDED FRONT BENCH SEAT WITH CENTER ARMREST, DUAL CONTROLS AND RECLINERS ▶ REAR-FACING THIRD SEAT ▶ 91.9 CUBIC FEET OF CARGO SPACE ▶ AM/FM STEREO WITH SEEK-SCAN AND DIGITAL CLOCK ▶ TILT-WHEEL STEERING ▶ STORAGE BINS IN FRONT DOORS AND SEAT BACKS ▶ AVAILABLE LEATHER IN SEATING AREAS



THE INSTRUMENT PANEL WITH ANALOG GAGES KEEPS YOU IN TOUCH WITH ALL OF THE CUSTOM CRUISER'S VITAL SIGNS.

CUSTOM CRUISER



EXTERIOR COLORS

WHITE 40

DARK MAPLE RED METALLIC 78

LIGHT CAMEL METALLIC 67

LIGHT SAPPHIRE BLUE METALLIC 22

BLACK SAPPHIRE BLUE METALLIC 28

GUNMETAL GRAY METALLIC 87

ALL CUSTOM CRUISER MODELS INCLUDE A STANDARD LOWER BODY ACENT COLOR—MEXICO CAMEL METALLIC 59 WHEN THE PRIMARY COLOR IS LIGHT CAMEL METALLIC 67 AND GUNMETAL GRAY METALLIC 87 WITH ALL OTHER PRIMARY COLORS.

CUSTOM CRUISER SHOWN ABOVE

CUSTOM CRUISER DIMENSIONS

WHEEL BASE (IN.)	115.9	HEIGHT (IN.)	60.1
TRACK, FRONT/REAR (IN.)	62.1/64.1	WEIGHT, CURB (LBS.)	4435
TIRE SIZE	P225/70R15	HEADROOM, FRONT/REAR (IN.)	39.7/39.6
WHEEL SIZE	15 x 7	LEGROOM, FRONT/REAR (IN.)	42.2/38.0
BRAKE TYPE, FRONT/REAR	DISC/DRUM	SHOULDER ROOM, FRONT/REAR (IN.)	63.4/63.5
FUEL TANK (GALS.)	22.0	SEATING CAPACITY	8
LENGTH (IN.)	207.5	CARGO CAPACITY (CU. FT.)	90.9
WIDTH (IN.)	70.2		

CUSTOM CRUISER POWERTRAIN SPECIFICATIONS

ENGINE	5.0-LITER V8
DISPLACEMENT	5.0 LITER (307 CU. IN.)
ENGINE TYPE	V8
BRAKE HP	170 @ 4200
NET TORQUE (LBS. FT.)	255 @ 2400
COMPRESSION RATIO	9.3:1
FUEL MANAGEMENT	ELECTRONIC FUEL INJECTION
TRANSAXLE	4-SPEED AUTOMATIC
SUSPENSION/HANDLING	
FRONT/REAR	HEAVY DUTY COIL SPRING/COIL SPRING
FRONT TURNING DIAMETER, CURB TO CURB (FT.)	38.6/39.4R

WHEELS 15" DELUXE WHEEL DISC STANDARD

15" ALUMINUM WHEEL OPTIONAL



STANDARD FEATURES

CUSTOM CRUISER INCLUDES:

- ▶ HEAVY-DUTY SUSPENSION
- ▶ POWER FRONT DISC/REAR DRUM BRAKES
- ▶ ANTI-LOCK BRAKING SYSTEM
- ▶ POWER STEERING
- ▶ 15" WHEELS WITH DELUXE DISCS
- ▶ ALL-SEASON RADIAL WSW TIRES
- ▶ BASE COAT/CLEAR COAT PAINT
- ▶ 2-SIDED GALVANIZED STEEL BODY PANELS (EXCEPT ROOF)
- ▶ COMPOSITE HALOGEN HEADLAMPS
- ▶ DUAL OUTSIDE MIRRORS (DRIVER'S SIDE REMOTE)
- ▶ VISTA ROOF WITH SOLARCOOL GLASS
- ▶ ROOFTOP ADJUSTABLE LUGGAGE RACK
- ▶ SOFT-RAY TINTED WINDOWS
- ▶ FLUSH-MOUNTED WINDOW GLASS AND DOOR HANDLES
- ▶ LOCKABLE REAR STORAGE COMPARTMENTS

- ▶ MANUALLY OPERATED REAR VENT WINDOWS
- ▶ GAS STRUTS FOR HOOD
- ▶ PULSE WIPERS
- ▶ REAR WINDOW WASHER/WIPER
- ▶ AIR CONDITIONING
- ▶ VERTICAL/HORIZONTAL CARGO NET
- ▶ CARPETED FLOOR AND LOWER DOOR PANELS
- ▶ DELUXE REAR COMPARTMENT TRIM
- ▶ RADIO/INSTRUMENT CLUSTER, INCLUDING ANALOG SPEEDOMETER, FUEL GAGE, OIL PRESSURE, COOLANT TEMP, VOLT/METER AND INDICATORS FOR LOW FUEL, OIL PRESSURE AND HIGH ENGINE TEMP, PLUS TRIP ODOMETER
- ▶ STORAGE BINS IN DOORS
- ▶ MAP POCKETS IN FRONT SEAT BACKS
- ▶ VISOR MIRRORS
- ▶ AM/FM STEREO WITH DUAL REAR AND DOOR SPEAKERS, AND DIGITAL CLOCK
- ▶ TURN SIGNAL ON REMINDER CHIME

- ▶ INSTRUMENT PANEL STORAGE POCKET
- ▶ "CHILD-PROOF" REAR DOOR LOCKS
- ▶ REAR STORAGE COMPARTMENT LOCK
- ▶ \$5/45 DIVIDED BENCH FRONT SEAT
- ▶ REAR FACING THIRD SEAT
- ▶ ASSIST HANDLES FOR THIRD SEAT
- ▶ SUPPLEMENTAL INFLATABLE RESTRAINT SYSTEM
- ▶ FRONT AND REAR LAP/SHOULDER SAFETY BELTS, OUTBOARD POSITIONS
- ▶ SPARE TIRE EXTRACTOR
- ▶ TILT WHEEL STEERING
- ▶ FLOOR/THRU VENTILATION
- ▶ 2-WAY TAILGATE WITH SWING-UP WINDOW
- ▶ TAILGATE-ALAR WARNING LIGHT
- ▶ REAR WINDOW POWER RELEASE
- ▶ TAILGATE POWER RELEASE

- ▶ OUTSIDE MIRROR DEFOG FEATURE WITH OPTION PACKAGE ISA
- ▶ REAR STORAGE SECURITY COVER
- ▶ ENGINE BLOCK HEATER
- ▶ 15" ALUMINUM WHEELS
- ▶ TOWING PACKAGE, INCLUDING TOWING AXLE, HEAVY-DUTY COOLING, ENGINE OIL COOLER, LIMITED SLIP DIFFERENTIAL AND 7-WIRE ELECTRICAL HARNESS
- ▶ LEATHER SEATING AREAS WITH LEATHER-WRAPPED STEERING WHEEL
- ▶ AM/FM STEREO WITH COMPACT DISC, DELCO-LOD AND EXTENDED RANGE SPEAKERS
- ▶ AM STEREO/FM STEREO WITH AUTO-REVERSE CASSETTE, GRAPHIC EQUALIZER AND EXTENDED RANGE SPEAKERS*

*RECEIVES C-GRAM AM STEREO BROADCASTS. MOST AM STEREO STATIONS ACROSS THE COUNTRY BROADCAST IN C-GRAM, BUT SOME DO NOT CHECK WITH YOUR LOCAL STATIONS FOR COMPATIBILITY IN YOUR AREA.

OPTIONAL FEATURES

- ▶ REAR WINDOW DEFOGGER—INCLUDES



THE TWO-WAY REAR DOOR DROPS DOWN TO SIMPLIFY LOADING OF LONG OR BULKY ITEMS.



THE TWO-WAY REAR DOOR ALSO OPENS FROM THE SIDE FOR EASY ENTRY INTO THE REAR FACING THIRD SEAT.



ILLUMINATED GRAB HANDLES GIVE PASSENGERS A HAND IN EXITING AND PROVIDE REAR PASSENGERS WITH READING LAMPS.



THE OPTIONAL DAY/NIGHT REARVIEW MIRROR HAS A NAVIGATIONAL DIGITAL COMPASS, AS WELL AS READING LIGHTS FOR BOTH DRIVER AND PASSENGER.



THE VISTA ROOF IS MADE OF SOLARCOOL GLASS TO REDUCE THE SUNLOAD, AND FLOWS SMOOTHLY INTO THE INTEGRATED ADJUSTABLE LUGGAGE RACK.

CARGO AREA DIMENSIONS

FLOOR LENGTH FROM BACK OF FRONT SEAT TO END OF FLOOR SURFACE (IN.)	89.4
FLOOR LENGTH FROM BACK OF SECOND SEAT TO END OF FLOOR SURFACE (IN.)	55.0
MINIMUM DISTANCE BETWEEN WHEELBASES AT FLOOR LEVEL (IN.)	48.7
REAR-END OPENING WIDTH AT REIT (IN.)	48.5
MAXIMUM HEIGHT OF REAR OPENING, TAILGATE OPEN (IN.)	27.1
MAXIMUM CARGO HEIGHT (IN.)	29.9

OPTION PACKAGES

CUSTOM CRUISER

ISB ISC ISD

▶ CRUISE CONTROL	ISB	ISC	ISD
▶ POWER DOOR/TAILGATE LOCKS	ISB	ISC	ISD
▶ POWER WINDOWS	ISB	ISC	ISD
▶ DOOR-EDGE MOLDINGS	ISB	ISC	ISD
▶ FLOOR MATS	ISB	ISC	ISD
▶ AM/FM STEREO WITH AUTO-REVERSE CASSETTE AND EXTENDED RANGE SPEAKERS	ISB	ISC	ISD
▶ POWER DRIVER'S SEAT	ISB	ISC	ISD
▶ AUTOMATIC LEVELING SYSTEM	ISB	ISC	ISD
▶ POWER ANTENNA	ISB	ISC	ISD
▶ ILLUMINATED VISOR MIRRORS	ISB	ISC	ISD
▶ DOOR COURTESY LAMPS	ISB	ISC	ISD
▶ REMINDER PACKAGE WITH REMINDER REMINDERS	ISB	ISC	ISD
▶ DAY/NIGHT MIRROR WITH READING LAMPS AND COMPASS	ISB	ISC	ISD
▶ ELECTRONIC AIR CONDITIONING	ISB	ISC	ISD
▶ CORNERING LAMPS	ISB	ISC	ISD
▶ POWER PASSENGER SEAT	ISB	ISC	ISD
▶ OUTSIDE ELECTRICALLY CONTROLLED MIRRORS (HEATED WHEN DEFOGGER IS ORDERED)	ISB	ISC	ISD
▶ TWILIGHT SENTINEL AUTOMATIC HEADLAMP CONTROL	ISB	ISC	ISD
▶ REMOTE LOCK CONTROLS	ISB	ISC	ISD



SILHOUETTE...THE LUXURY MINIVAN THAT FEATURES SMART, AERODYNAMIC

STYLING, MODULAR SEATING, AND A SURPRISINGLY LONG LIST OF STANDARD FEATURES.

IT'S THE BEST WAY TO TRAVEL IN SPACE AND STYLE.

▶ ADVANCED AERODYNAMIC STYLING ▶ FRONT-WHEEL DRIVE ▶ COMPOSITE BODY PANELS THAT RESIST RUST AND DENTS ▶ 3.1-LITER V6 ENGINE WITH ELECTRONIC FUEL INJECTION ▶ POWER RACK-AND-PINION STEERING ▶ STAINLESS STEEL EXHAUST SYSTEM ▶ POWER BRAKES ▶ ALUMINUM WHEELS ▶ REAR WIPER/WASHER SYSTEM ▶ REAR LIFT GATE SWINGS UP FOR EASY LOADING ▶ 20-GALLON FUEL TANK MADE OF CORROSION-RESISTANT POLYETHYLENE ▶ THE OLDSMOBILE EDGE

SILHOUETTE



SILHOUETTE

▶ MODULAR SEATING FOR UP TO

SEVEN ADULTS ▶ SOLAR COATED

WINDSHIELD REDUCES INTERIOR

HEAT ▶ AIR CONDITIONING

▶ DUAL POWER OUTSIDE MIRRORS

▶ REAR POWER OUTLET FOR

12-VOLT ACCESSORIES ▶ TILT-

WHEEL STEERING ▶ FRONT

BUCKET SEATS WITH ARMRESTS

▶ AM/FM STEREO WITH SEEK-

SCAN AND DIGITAL CLOCK

(COMPACT DISC IS AVAILABLE)

▶ AVAILABLE FE3 TOURING

SUSPENSION ▶ AVAILABLE

LEATHER IN SEATING AREAS

THE RALLYE GAGE CLUSTER
INCLUDES SPEEDOMETER, TACH-
OMETER, TRIP ODOMETER,
VOLTMETER, AND TEMPERATURE
AND OIL PRESSURE GAGES



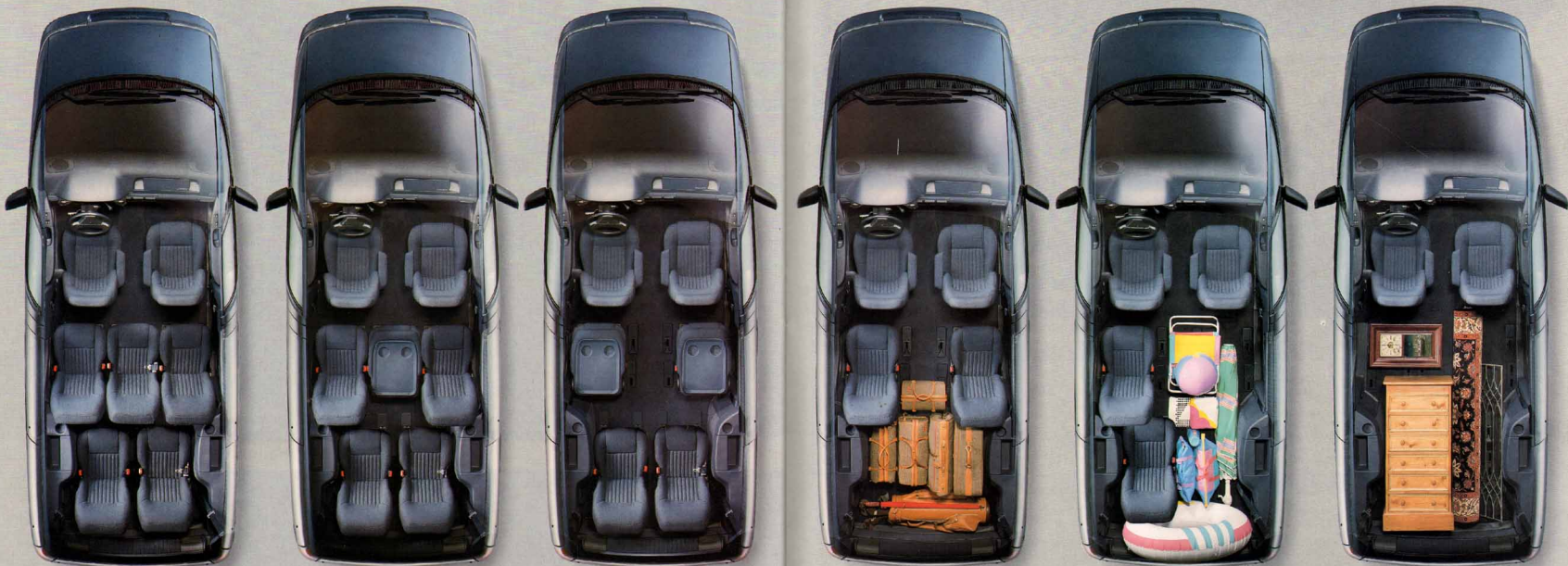
THE NEW OVERHEAD CONSOLE
WITH THERMOMETER, COMPASS,
MAPLIGHTS AND THREE
STORAGE COMPARTMENTS
(SHOWN AT FAR RIGHT)



SILHOUETTE

▶ AVAILABLE LEATHER IN SEATING AREAS ▶ FOLDING SEATS BECOME TABLES WITH CUP HOLDERS ▶ MODULAR SEATING FOR UP TO SEVEN

▶ WALK-THRU TO REAR SEATING ▶ LIGHTWEIGHT SEATS REMOVE IN SECONDS ▶ 112.6 CUBIC FEET OF CARGO CAPACITY WITH FIVE REAR SEATS REMOVED



SILHOUETTE



SILHOUETTE SHOWN ABOVE

EXTERIOR COLORS



CARGO AREA DIMENSIONS

MINIMUM HORIZONTAL DISTANCE FROM TOP OF REAR OF FRONT SEAT BACK TO INSIDE OF TAILGATE (IN)	70.5
MINIMUM DISTANCE BETWEEN WHEELHOUSES AT FLOOR LEVEL (IN)	40
REAR END OPENING WIDTH AT REEL (IN)	50.5
MAXIMUM CARGO HEIGHT (IN)	45.3

SILHOUETTE DIMENSIONS

WHEEL BASE (IN)	109.8	HEIGHT (IN)	65.2
TRACK, FRONT/REAR (IN)	58.7/60.9	WEIGHT, CURB (LBS.)	3648
TIRE SIZE (STD.)	P205/70R14	HEADROOM, FRONT/MIDDLE/REAR (IN)	35.7/35.6/34.0
WHEEL SIZE (STD.)	14	LEG ROOM, FRONT/MIDDLE/REAR (IN)	40.7/33.1/34.0
BRAKE TYPE, FRONT/REAR	DISC/DRUM	SHOULDER ROOM, FRONT/MIDDLE/REAR (IN)	60.6/62.3/62.2
FUEL TANK (GALS.)	20.0	SEATING CAPACITY	7
LENGTH (IN)	194.2	CARGO CAPACITY (CU. FT.)	112.6
WIDTH (IN)	73.9		

SILHOUETTE POWERTRAIN SPECIFICATIONS

ENGINE	3.1-LITER V6
DISPLACEMENT	3.1 LITER (189 CU. IN.)
ENGINE TYPE	V6
BRAKE HP	120 @ 4200
NET TORQUE (LBS. FT.)	175 @ 2200
COMPRESSION RATIO	8.5:1
FUEL MANAGEMENT	ELECTRONIC FUEL INJECTION
TRANSDAXLE	3-SPEED AUTOMATIC
SUSPENSION/HANDLING	
FRONT/REAR	MACPHERSON STRUT/COIL SPRING
FRONT TURNING DIAMETER, CURB TO CURB (FT.)	43

WHEELS 14" ALUMINUM STYLED WHEEL STANDARD 15" ALUMINUM STYLED WHEEL INCLUDED WITH TOURING SUSPENSION



STANDARD FEATURES

SILHOUETTE INCLUDES:

- ▶ MACPHERSON STRUT FRONT/COIL SPRING REAR SUSPENSION
- ▶ POWER FRONT DISC/REAR DRUM BRAKES
- ▶ POWER RACK AND PINION STEERING
- ▶ 14" ALUMINUM WHEELS
- ▶ ALL SEASON RADIAL BSW TIRES
- ▶ BASE COAT/CLEAR COAT TRIMT
- ▶ AIR CONDITIONING
- ▶ FRONT/REAR AIR DISTRIBUTION SYSTEM
- ▶ CONVENIENCE GROUP, INCLUDING OVERHEAD CONSOLE WITH DIGITAL COMPASS, OUTSIDE TEMPERATURE READ-OUT, MAP LIGHTS AND THREE STORAGE COMPARTMENTS, REAR READING LAMPS, DOME LAMP OVER RIDGE SWITCH, AND UNDER HOOD LAMP

- ▶ FRONT/REAR SIDE WINDOW DEFOGGERS
- ▶ CARPETED FLOOR AND LOWER DOOR PANELS
- ▶ CARPETED FRONT AND REAR FLOOR MATS
- ▶ Rallye INSTRUMENT CLUSTER, INCLUDING ANALOG SPEEDOMETER, TACHOMETER, TRIP AND TOTAL ODOMETER, VOLTMETER, TEMPERATURE AND OIL PRESSURE GAGES
- ▶ AUXILIARY POWER OUTLET IN REAR, 12 VOLT
- ▶ AM/FM STEREO WITH SEEK SCAN, DUAL FRONT AND REAR SPEAKERS AND DIGITAL CLOCK
- ▶ FRONT BUCKET SEATS WITH FOLDING ARMBUSTS
- ▶ THREE CENTER AND TWO REAR MODULAR SEATS WITH INTEGRATED CUP HOLDERS ON SEAT BACKS
- ▶ FRONT AND REAR LAP/SHOULDER SAFETY BELTS, OUTBOARD POSITIONS PLUS CENTER PASSENGER LAP BELT
- ▶ TILT-WHEEL STEERING
- ▶ UNITIZED STEEL SPACEFRAME CONSTRUCTION
- ▶ COMPOSITE BODY PANELS
- ▶ HYDRAULICALLY ASSISTED REAR LIFT GATE
- ▶ STAINLESS STEEL EXHAUST SYSTEM
- ▶ COMPOSITE HALOGEN HEAD LAMPS
- ▶ HIGH MOUNTED REAR STOP, TURN SIGNAL AND TAILLIGHT LAMPS
- ▶ OUTSIDE DIAL POWER MIRRORS
- ▶ DEEPTINT SIDE AND LIFT GATE WINDOWS
- ▶ SOLAR TREATED WINDSHIELD
- ▶ PULSE WIPERS
- ▶ REAR WINDOW WIPER/WASHER
- ▶ BODY SIDE PROTECTION MOLDING
- ▶ COLLUMN SHIFTER

OPTIONAL FEATURES

- ▶ DELETE BLACK ROOF PAINT

- ▶ PASSENGER MODULAR SEATING, INCLUDING AUXILIARY FLOOR MAT
- ▶ ELECTRIC REAR WINDOW DEFOGGER
- ▶ F3 TOURING SUSPENSION, INCLUDING 15" ALUMINUM WHEELS, TOURING TIRES, ELECTRONIC LEVELING CONTROL, 15.7:1 STEERING GEAR RATIO AND AIR INFLATION KIT WITH AIR HOSE, PRESSURE GAGE AND NOZZLES FOR FILLING TIRES AND ACCESSORIES
- ▶ ENGINE BLOCK HEATER
- ▶ ROOFTOP LUGGAGE CARRIER WITH REAR WINDOW AIR DEFLECTOR
- ▶ LEATHER SEATING AREAS WITH LEATHER WRAPPED STEERING WHEEL
- ▶ AM/FM STEREO WITH SEEK SCAN, AUTO REVERSE CASSETTE AND DIGITAL DISPLAY CLOCK
- ▶ AM/FM STEREO WITH SEEK SCAN, COMPACT DISC AND DIGITAL DISPLAY CLOCK



THE AVAILABLE ROOFTOP LUGGAGE RACK IS FULLY ADJUSTABLE, INCLUDES TIE-DOWN HOOKS, AND IS DESIGNED TO COMPLEMENT SILHOUETTE'S STYLING.



THE HANDY INFLATOR KIT FOR FILLING TIRES AND RECREATIONAL EQUIPMENT IS INCLUDED WITH THE AVAILABLE F3 TOURING SUSPENSION.



THE REAR WIPER/WASHER SYSTEM HAS A PULSE FEATURE FOR INTERMITTENT CLEARING.



THE DIAL OUTSIDE POWER MIRRORS ARE OPERATED AT THE TOUCH OF A BUTTON FOR PRECISE PLACEMENT.

OPTION PACKAGES

ITEMS LISTED BELOW ARE ALSO AVAILABLE AS INDIVIDUAL OPTIONS.

	SILHOUETTE	ISC
▶ POWER DOOR LOCKS	▼	▼
▶ CRUISE CONTROL	▼	▼
▶ POWER WINDOWS	▼	▼
▶ POWER DRIVER'S SEAT	▼	▼

BRAVADA

BRAVADA...THE ALL-NEW SPORT UTILITY VEHICLE ENGINEERED FOR THE UNEXPECTED. BRAVADA

IS THE ONLY SPORT UTILITY VEHICLE THAT HAS THE EXCLUSIVE SMARTTRAK ROAD MANAGEMENT

SYSTEM, COMBINING FULL-TIME ALL-WHEEL DRIVE WITH FOUR-WHEEL ANTI-LOCK BRAKES. AND BRAVADA'S

LUXURIOUS INTERIOR WILL ASSURE YOU OF A UNIQUELY CIVILIZED RIDE ON THE INSIDE AS WELL.

▶ SMARTTRAK ROAD MANAGEMENT SYSTEM COMBINES FULL-TIME ALL-WHEEL DRIVE WITH FULL-TIME FOUR-WHEEL ANTI-LOCK BRAKING SYSTEM ▶ FOUR DOORS

▶ POWERFUL 4.3-LITER VORTEC V6 ENGINE ▶ 15" ALUMINUM WHEELS WITH FULL-SIZE SPARE ▶ FOUR-SPEED AUTOMATIC OVERDRIVE TRANSMISSION ▶ POWER

STEERING ▶ TUNED SUSPENSION WITH HIGH-PRESSURE BILSTEIN GAS-ASSISTED SHOCKS ▶ AVAILABLE 5500-POUND TOWING PACKAGE* ▶ THE OLDSMOBILE EDGE

*INCLUDING PASSENGERS, CARGO AND EQUIPMENT



▶ AVAILABLE LEATHER IN SEATING AREAS ▶ DUAL ELECTRIC OUTSIDE MIRRORS ▶ RECLINING FRONT BUCKET SEATS ▶ AIR CONDITIONING ▶ POWER DOOR LOCKS WITH REMOTE KEYLESS ENTRY ▶ CRUISE CONTROL ▶ POWER

BRAVADA

WINDOWS ▶ POWER TAILGATE LOCK RELEASE ▶ DEEP TINTED WINDOWS ▶ REAR WINDOW WASHER/WIPER SYSTEM WITH DEFOGGER ▶ AM STEREO/FM STEREO WITH AUTO-REVERSE CASSETTE AND A GRAPHIC EQUALIZER*



BRAVADA'S FULL-FEATURE CONSOLE WITH DUAL POWER OUTLETS, CUP HOLDERS AND STORAGE

*RECEIVES C-QUAM™ AM STEREO BROADCASTS. MOST AM STEREO STATIONS ACROSS THE COUNTRY BROADCAST IN C-QUAM™ BUT SOME DO NOT. CHECK WITH YOUR LOCAL STATIONS FOR COMPATIBILITY IN YOUR AREA.



BRAVADA

▶ ADVANCED ALL-WHEEL-DRIVE SYSTEM SENSES SLIP-
PING WHEEL AND REDISTRIBUTES TORQUE ▶ 5500-POUND TOWING CAPACITY WITH AVAILABLE TOWING PACKAGE* ▶ REAR ANTI-SLIP DIFFERENTIAL ▶ 160
HORSEPOWER @ 4000 RPM ▶ 230 FOOT-POUNDS OF
TORQUE @ 2800 RPM ▶ HEAVY-DUTY ELECTRICAL SYSTEM AND BATTERY ▶ FOG LAMPS INTEGRATED INTO FRONT AIR DAM ▶ ADJUSTABLE ROOFTOP AERO
LUGGAGE RACK ▶ FRAME IS DIPPED IN HOT WAX FOR
CORROSION PROTECTION ▶ UNITIZED BODY IS MOUNTED ON A FULL-FRAME CHASSIS TO HELP ISOLATE PASSENGER COMPARTMENT FROM NOISE AND VIBRATION

*INCLUDING PASSENGERS, CARGO AND EQUIPMENT



BRAVADA



BRAVADA SHOWN ABOVE

BRAVADA DIMENSIONS

WHEELBASE (IN)	107.0	HEIGHT (IN)	65.5
TRACK, FRONT/REAR (IN)	55.5/54.1	WEIGHT, CURB (LBS.)	3409
TIRE SIZE	P235/75R15	HEADROOM, FRONT/REAR (IN)	39.1/38.8
WHEEL SIZE	15 x 7	LEGROOM, FRONT/REAR (IN)	42.5/36.5
BRAKE TYPE, FRONT/REAR	DISC/DISK	SHOULDER ROOM, FRONT/REAR (IN)	54.2/55.6
FUEL TANK (GALS.)	20.0	SEATING CAPACITY	5
LENGTH (IN)	176.0	CARGO CAPACITY (CU FT)	74.3*
WIDTH (IN)	65.2	*WITH REAR SEATS FOLDED	

BRAVADA POWERTRAIN SPECIFICATIONS

ENGINE	4.3-LITER V6
DISPLACEMENT	4.3 LITER (262 CU. IN.)
ENGINE TYPE	V6
BRAKE HP	160 @ 4000
NET TORQUE (LBS. FT)	230 @ 2800
COMPRESSION RATIO	9.3:1
FUEL MANAGEMENT	ELECTRONIC FUEL INJECTION
TRANSMAXLE	4-SPEED AUTOMATIC
SUSPENSION/HANDLING	
FRONT/REAR	TORSION BAR/LEAF SPRING
FRONT TURNING DIAMETER, CURB TO CURB (FT)	37.3

WHEELS 15" ALUMINUM STYLED WHEEL STANDARD



EXTERIOR COLORS

WHITE 12



DARK RED 48



DARK BLUE METALLIC 47



MEDIUM GRAY METALLIC 90



BLACK 19



CARGO AREA DIMENSIONS

FLOOR LENGTH FROM BACK OF FRONT SEAT TO INSIDE OF TAILGATE (IN)	68.6
MINIMUM HORIZONTAL DISTANCE FROM REAR SEAT BACK TO INSIDE OF TAILGATE AT FLOOR (IN)	35.5
MINIMUM DISTANCE BETWEEN WHEEL HOUSES AT FLOOR LEVEL (IN)	38.4
REAR END OPENING WIDTH AT BELT (IN)	48.0
MAXIMUM CARGO HEIGHT (IN)	35.0

STANDARD FEATURES

BRAVADA INCLUDES:

- ▶ FULL-TIME ALL-WHEEL DRIVE
- ▶ LIMITED SLIP DIFFERENTIAL
- ▶ VISCOUS CLUTCH WITH INTERNAL DIFFERENTIAL
- ▶ TUNED SUSPENSION—INDEPENDENT FRONT WITH TORSION BAR SPRINGS AND STABILIZER BAR; REAR SEMI-ELLIPTIC LEAF SPRINGS—WITH HIGH-PRESSURE BILSTEIN GAS ASSISTED SHOCKS
- ▶ POWER FRONT DISC/REAR DRUM BRAKES
- ▶ ANTI-LOCK BRAKING SYSTEM, FULL-TIME, FOUR WHEEL
- ▶ POWER STEERING
- ▶ 15" ALUMINUM WHEELS
- ▶ RADIAL RSW TIRES, P235/75R15
- ▶ FULL-SIZE SPARE TIRE WITH ALUMINUM WHEEL
- ▶ ROOFTOP LUGGAGE CARRIER WITH ADJUSTABLE CROSSBAR

- ▶ REMOTE LOCK CONTROLS
- ▶ COMPOSITE HALOGEN HEADLAMPS
- ▶ BODY SIDE ACCENT STRIPE, GOLD METALLIC
- ▶ OUTSIDE DUAL POWER MIRRORS
- ▶ PULSE WIPERS
- ▶ TAILGATE WIPER/WASHER
- ▶ FOG LAMPS
- ▶ AIR CONDITIONING
- ▶ CRUISE CONTROL
- ▶ RECLINING FRONT BUCKET SEATS
- ▶ FOLDING REAR BENCH SEATS WITH CENTER ARMREST
- ▶ SIDE/REAR WINDOW DEFOGGERS
- ▶ ASSIST INSTRUMENT CLUSTER, INCLUDING GAGES FOR OIL PRESSURE, COOLANT TEMP, VOLT/METER AND FUEL LEVEL, PLUS TRIP ODOMETER AND ANTI-LOCK BRAKE MONITOR LIGHT
- ▶ DAY-NIGHT MIRROR WITH BUILT-IN CONSOLE AND READING LIGHTS
- ▶ AM STEREO/FM STEREO WITH SEEK SCAN, AUTO-REVERSE CASSETTE WITH MUSIC

- ▶ SEARCH, GRAPHIC EQUALIZER AND DIGITAL CLOCK*
- ▶ LEATHER-WRAPPED STEERING WHEEL
- ▶ TILT-WHEEL STEERING
- ▶ FLOORTRAY VENTILATION
- ▶ POWER WINDOWS
- ▶ INSIDE POWER TAILGATE LOCK RELEASE
- ▶ SWING-UP REAR WINDOW WITH GAS-ASSISTED STRUTS
- ▶ SOFT-RAY TINTED WINDOWS (DEEPTINT IN REAR)
- ▶ FRONT AND REAR LAP/SHOULDER SAFETY BELTS, OUTBOARD POSITIONS, PLUS CENTER PASSENGER LAP BELT
- ▶ ASSIST HANDLES FOR ALL PASSENGER SEATING POSITIONS
- ▶ CARPETED FLOOR AND LOWER DOOR PANELS
- ▶ FRONT AND REAR CARPETED FLOOR MATS
- ▶ PROTECTIVE REAR CARGO MAT
- ▶ CONSOLE WITH CUP HOLDERS AND DIAL 12-VOLT ELECTRICAL ACCESSORY OUTLETS
- ▶ HEAVY-DUTY, HIGH CAPACITY BATTERY

OPTIONAL FEATURES

- ▶ ELECTRONIC INSTRUMENT PANEL CLUSTER, INCLUDING BAR GRAPH FUEL LEVEL, COOLANT TEMPERATURE, VOLTMETER, TACHOMETER AND OIL PRESSURE, DIGITAL DISPLAY OF TOTAL ODOMETER AND TRANSMISSION SHIFT POSITION, PLUS ENGLISH/METRIC CONVERSION SWITCH
- ▶ COLD CLIMATE PACKAGE INCLUDING ENGINE BLOCK HEATER AND ADDITIONAL ANTIFREEZE PROTECTION
- ▶ LEATHER SEATING AREAS
- ▶ HEAVY-DUTY TRAILERING PACKAGE, INCLUDING HEAVY-DUTY RADIATOR, ENGINE OIL COOLER, HEAVY-DUTY HAZARD WARNING FLASHER, PLATFORM HITCH AND 7-WIRE ELECTRICAL HARNESS
- ▶ MUD AND SNOW TIRES
- ▶ "EYES-C-ON-AM" AM STEREO BROADCASTS MOST AM STEREO STATIONS ACROSS THE COUNTRY BROADCAST IN C-DMC BUT SOME DO NOT CHECK WITH YOUR LOCAL STATIONS FOR COMPATIBILITY IN YOUR AREA.



THE AVAILABLE ELECTRONIC INSTRUMENT PANEL GAGE CLUSTER USES MULTI-COLORED DIGITAL DISPLAYS FOR VEHICLE SPEED, FUEL LEVEL, COOLANT TEMPERATURE, VOLTMETER, TACHOMETER, OIL PRESSURE, ODOMETER AND TRANSMISSION SHIFT POSITION.



LIGHTED VANITY MIRRORS ARE INCLUDED ON BOTH THE DRIVER AND PASSENGER SIDES. LOCATED ON THE BACK OF THE SUNSHADE, THEY PROVIDE EXCELLENT ILLUMINATION.



THE REAR BENCH SEAT FOLDS FOR EASY ACCESS TO THE REAR AND TO ALLOW MORE CARGO AREA WHEN NEEDED. WHEN BOTH ARE FOLDED, IT BRINGS BRAVADA'S TOTAL CARGO CAPACITY TO 74.3 CUBIC FEET OF SPACE.



THE DAY-NIGHT REARVIEW MIRROR INCORPORATES A WIDE-ANGLE AND DIGITAL COMPASS, AS WELL AS READING LIGHTS FOR BOTH DRIVER AND PASSENGER. BOTH COME IN HANDY FOR LONG TRIPS.



THE HEART OF THE SMART TRAK ALL-WHEEL DRIVE SYSTEM: THE ADVANCED TRANSFER CASE HAS A MASSIVE TORQUE CAPACITY OF 1500 FOOT-POUNDS AND A VISCOUS CLUTCH THAT PROVIDES TORQUE IN PROPORTION TO NEED. WITH NO NEED FOR A SHIFTING LINKAGE, IT HAS ONLY ABOUT HALF THE MOVING PARTS FOUND IN A TYPICAL TRANSFER CASE.

THE OLDSMOBILE EDGE

▶ TO GUARANTEE YOUR TOTAL SATISFACTION AS THE
OF THE CONFIDENCE WE HAVE IN THE QUALITY OF

OWNER OF A NEW OLDSMOBILE, WE HAVE DEVELOPED THE MOST COMPREHENSIVE OWNER SATISFACTION PROGRAM IN THE INDUSTRY—THE OLDSMOBILE EDGE EVIDENCE
EACH OF OUR PRODUCTS. ▶ YOURS AT NO EXTRA COST WHEN YOU BUY A NEW 1991 OLDSMOBILE, IT GOES FAR BEYOND THE PROTECTION OTHER CAR COMPANIES OFFER.



▶ GUARANTEED SATISFACTION.

▶ GUARANTEED SATISFACTION.

IF NOT TOTALLY SATISFIED WITH YOUR NEW OLDSMOBILE

▶ BUMPER-TO-BUMPER PLUS WARRANTY.

WITHIN UP TO 30 DAYS OR 1,500 MILES, WHICHEVER COMES FIRST, YOU CAN RETURN IT TO THE SELLING DEALER AND RECEIVE CREDIT TOWARD THE PURCHASE OF ANOTHER NEW 1991 OLDSMOBILE.

▶ 24-HOUR ROADSIDE ASSISTANCE.

▶ BUMPER-TO-BUMPER PLUS

WARRANTY. EVERY PART OF

YOUR NEW OLDSMOBILE—EXCEPT TIRES, WHICH ARE COVERED BY THEIR MANUFACTURER—IS COVERED AGAINST DEFECTS IN MATERIALS OR WORKMANSHIP FOR 3 YEARS OR 50,000 MILES, WHICHEVER COMES FIRST. AFTER THE FIRST YEAR OR 12,000 MILES, A \$100

DEDUCTIBLE PER VISIT APPLIES TO BODY SHEET METAL, RUST-THROUGH FROM CORROSION IS COVERED FOR 6 YEARS OR 100,000 MILES, WHICHEVER COMES FIRST. THERE IS NO DEDUCTIBLE FOR CORROSION. EMISSION CONTROL SYSTEMS ARE COVERED FOR 5 YEARS OR 50,000 MILES, WHICHEVER COMES FIRST. SEE YOUR

DEALER FOR TERMS OF THIS

LIMITED WARRANTY. ▶ 24-HOUR ROADSIDE ASSISTANCE. AS THE OWNER OF A NEW OLDSMOBILE, YOU AUTOMATICALLY GET 24-HOUR ROADSIDE ASSISTANCE ANYWHERE IN NORTH AMERICA. ROADSIDE ASSISTANCE APPLIES DURING THE

TERM OF THE WARRANTY. IT'S YOURS AT NO EXTRA COST, AND COVERS TOWING, LOCKSMITH SERVICE, JUMP-STARTING, FLAT TIRE REPAIR, DELIVERY OF SMALL AMOUNTS OF FUEL WHEN YOU'VE RUN OUT, MINOR REPAIRS SUCH AS BROKEN FAN BELTS AND HOSES, AS WELL AS ASSISTANCE IF STUCK IN SAND, MUD OR SNOW

YOU ARE ALSO ENTITLED TO TRIP INTERRUPTION BENEFITS UP TO \$500 IN THE EVENT YOUR VEHICLE IS DISABLED MORE THAN 150 MILES FROM HOME. YOU'LL RECEIVE A COMPUTERIZED TRIP ROUTE SHOWING ROADS TO BE TRAVELED FOR FASTEST OR MOST SCENIC ROUTES, DISTANCE BETWEEN STOPS,

PROJECTED DRIVING TIME AND MORE. YOU'LL ALSO RECEIVE A MAP OF THE USA AND COMPANION MAPS COMPLEMENTING YOUR TRIP, THE OLDSMOBILE NATIONAL TRAVEL AND RECREATION DISCOUNT COUPON BOOK WITH OVER \$1,000 IN POSSIBLE SAVINGS, AND A LISTING OF OLDSMOBILE DEALERS

WITHIN A TEN (10) MILE RADIUS OF YOUR PLANNED TRIP ROUTE. JUST ANOTHER WAY WE GIVE YOU THE EDGE. FOR TRIP ROUTING INFORMATION, CALL 1-800-535-OLDS. SEE YOUR PARTICIPATING DEALER FOR DETAILS. AT OLDSMOBILE WE ARE CONTINUALLY IMPROVING THE OLDSMOBILE EDGE AS EVI-

DENCE OF OUR COMMITMENT TO PROVIDING THE BEST OWNER SATISFACTION PROGRAM IN THE INDUSTRY. ENHANCEMENTS TO THE PROGRAM ARE ALWAYS BEING CONSIDERED. SEE YOUR DEALER FOR ANY ADDITIONS TO THE OLDSMOBILE EDGE, THE MOST COMPREHENSIVE OWNER SATISFACTION PROGRAM IN THE INDUSTRY.

▶ **IMPORTANT—A WORD ABOUT THIS CATALOG:** WE HAVE TRIED TO MAKE THIS CATALOG AS COMPREHENSIVE AND FACTUAL AS POSSIBLE. WE RESERVE THE RIGHT, HOWEVER, TO MAKE CHANGES AT ANY TIME, WITH-OUT NOTICE, IN PRICES, COLORS, MATERIALS, EQUIPMENT, SPECIFICATIONS, MODELS AND AVAILABILITY. SINCE SOME INFORMATION MAY HAVE BEEN UPDATED SINCE THE TIME OF PRINTING, PLEASE CHECK WITH YOUR OLDSMOBILE DEALER FOR COMPLETE DETAILS.

▶ **A WORD ABOUT ENGINES:** OLDSMOBILES ARE EQUIPPED WITH ENGINES PRODUCED BY DIFFERENT OPERATING UNITS OF GENERAL MOTORS, ITS SUBSIDIARIES OR SUPPLIERS TO GM WORLDWIDE.

▶ **A WORD ABOUT ASSEMBLY:** OLDSMOBILES ARE ASSEMBLED BY DIFFERENT OPERATING UNITS OF GENERAL MOTORS, ITS SUBSIDIARIES OR SUPPLIERS TO GM WORLDWIDE. OLDSMOBILES INCORPORATE THOUSANDS OF COMPONENTS PRODUCED BY DIFFERENT OPERATING UNITS OF GM, ITS SUBSIDIARIES OR SUPPLIERS TO GM WORLDWIDE. WE SOMETIMES FIND IT NECESSARY TO PRODUCE OLDSMOBILES WITH DIFFERENT OR DIFFERENTLY SOURCED COMPONENTS THAN ORIGINALLY SCHEDULED. ALL SUCH COMPONENTS HAVE BEEN APPROVED FOR USE IN OLDSMOBILES AND WILL PROVIDE THE QUALITY PERFORMANCE ASSOCIATED WITH THE OLDSMOBILE NAME. SINCE SOME OPTIONS MAY BE UNAVAILABLE WHEN YOUR VEHICLE IS

ASSEMBLED, WE SUGGEST THAT YOU VERIFY THAT YOUR VEHICLE INCLUDES THE EQUIPMENT YOU ORDERED OR, IF THERE ARE CHANGES, THAT THEY ARE ACCEPTABLE TO YOU.

▶ **A WORD ABOUT UPDATED SERVICE INFORMATION:** OLDSMOBILE REGULARLY SENDS ITS DEALERS USEFUL SERVICE BULLETINS ABOUT OLDSMOBILE PRODUCTS. OLDSMOBILE MONITORS PRODUCT PERFORMANCE IN THE FIELD. WE THEN PREPARE BULLETINS FOR SERVICING OUR PRODUCTS BETTER. NOW YOU CAN GET THESE BULLETINS, TOO. ASK YOUR DEALER. TO GET ORDERING INFORMATION, CALL TOLL FREE 1-800-551-4123.

▶ **A WORD ABOUT WARRANTY:** THE GM 3-YEAR/50,000 MILE BUMPER-TO-BUMPER PLUS WARRANTY COVERS REPAIRS FOR ANY NEW OLDSMOBILE, INCLUDING LABOR AND PARTS, TO CORRECT ANY DEFECTS IN MATERIAL OR WORKMANSHIP OCCURRING DURING THE WARRANTY PERIOD. THE COMPLETE VEHICLE (EXCEPT TIRES, WHICH ARE COVERED BY THEIR MANUFACTURER) WILL BE COVERED FOR 3 YEARS OR 50,000 MILES, WHICHEVER COMES FIRST. AFTER THE FIRST YEAR OR 12,000 MILES, THERE IS A \$100 DEDUCTIBLE PER REPAIR VISIT. BODY SHEET METAL, RUST-THROUGH FROM CORROSION IS COVERED FOR 6 YEARS OR 100,000 MILES, WHICHEVER COMES FIRST. THERE IS NO DEDUCTIBLE FOR RUST THOUGH REPAIRS. SEE YOUR OLDSMOBILE DEALER FOR TERMS OF THIS LIMITED WARRANTY.

▶ **A WORD ABOUT CORROSION PROTECTION:** OLDSMOBILES ARE DESIGNED AND BUILT TO RESIST CORROSION. ALL BODY SHEET METAL COMPONENTS ARE WARRANTED AGAINST RUST-THROUGH FROM CORROSION FOR 6 YEARS/100,000 MILES. APPLICATION OF ADDITIONAL RUST-INHIBITING MATERIALS IS NOT REQUIRED. *UNDER THE CORROSION COVERAGE.*

▶ **PASSENGER CAR OCCUPANT PROTECTION:** AUTOMATIC SAFETY BELT SYSTEM FOR DRIVER AND RIGHT FRONT PASSENGER ON ALL CUTLASS CALAIS, CUTLASS CIERA, CUTLASS CRUISER, CUTLASS SUPREME AND EIGHTY EIGHT MODELS OR SUPPLEMENTAL INFLATABLE RESTRAINT, DRIVER ONLY, WITH MANUAL LAP/SHOULDER SAFETY BELTS FOR THE DRIVER AND RIGHT FRONT PASSENGER ON ALL CUSTOM CRUISER, NINETY EIGHT AND TORONADO MODELS (AVAILABLE ON EIGHTY EIGHT SEDAN MODELS) BOTH INCLUDING VISUAL AND AUDIBLE WARNING SYSTEM, MANUAL LAP/SHOULDER SAFETY BELTS, OUT-

BOARD REAR SEAT POSITIONS, MANUAL LAP SAFETY BELTS, CENTER FRONT/REAR SEAT POSITIONS, WHERE APPLICABLE, ENERGY-ABSORBING STEERING COLUMN, ENERGY-ABSORBING INSTRUMENT PANEL, ENERGY-ABSORBING SEAT BACK TOPS, FRONT, INTERLOCKING DOOR LATCHES, SIDE-GUARD DOOR BEAM, PASSENGER-GUARD INSIDE DOOR LOCK HANDLES, INERTIA-LOCKING, FOLDING FRONT SEAT BACKS, TWO DOOR MODELS, SAFETY ARMRESTS, HEAD RESTRAINTS, DRIVER AND RIGHT

FRONT PASSENGER (ADJUSTABLE OR INTEGRAL), BREAK-AWAY INSIDE REARVIEW MIRRORS, SECURITY DOOR LOCK AND DOOR RETENTION COMPONENTS, TEMPERED SAFETY GLASS, SIDE WINDOWS, ALSO REAR WINDOWS (PLASTIC REAR IN CUTLASS SUPREME CONVERTIBLE), PRESSURE LOCK RADIATOR CAP, DUAL SUN VISORS

▶ **BRAVADA, SILHOUETTE OCCUPANT PROTECTION:** MANUAL LAP/SHOULDER SAFETY BELTS, OUTBOARD FRONT AND REAR SEAT POSITIONS, MANUAL LAP SAFETY BELTS, CENTER FRONT/REAR SEAT POSITIONS, WHERE APPLICABLE, ENERGY-ABSORBING STEERING COLUMN, ENERGY-ABSORBING INSTRUMENT PANEL, ENERGY-ABSORBING SEAT BACK TOPS, FRONT, INTERLOCKING DOOR LATCHES, SAFETY ARMRESTS, BREAK-AWAY INSIDE REARVIEW MIRRORS, SECURITY DOOR LOCKS AND DOOR RETENTION COMPONENTS, TEMPERED SAFETY GLASS, SIDE WINDOWS, ALSO REAR WINDOWS, DUAL SUN VISORS

▶ **PASSENGER CAR ACCIDENT AVOIDANCE:** SIDE MARKER LAMPS AND REFLECTORS, PARKING LAMPS THAT ILLUMINATE WITH HEADLAMPS, FOUR-WAY HAZARD WARNING FLASHERS, BACK-UP LAMPS, CENTER HIGH-MOUNTED STOP LAMP, DIRECTIONAL SIGNAL CONTROL WITH LANE-CHANGE FEATURE, WINDSHIELD DEFROSTER, WASHER AND MULTI-SPEED WIPERS, INSIDE REARVIEW MIRROR, OUTSIDE LEFT AND RIGHT REARVIEW MIRRORS, BRAKE SYSTEM WITH DUAL

MASTER CYLINDER AND WARNING LIGHT, STARTER SAFETY SWITCH, DUAL ACTION HOOD LATCH, LOW-GLARE FINISH ON INSIDE WINDSHIELD MOLDINGS, WIPER ARMS AND BLADES, METALLIC STEERING WHEEL SURFACES, ILLUMINATED HEATER AND DEFROSTER CONTROLS, ILLUMINATED WINDSHIELD WIPER AND WASHER CONTROLS (IF ON IP), TIRES WITH BUILT-IN TREAD WEAR INDICATORS, SAFETY ROAD WHEEL RIMS, PRESSURE RELIEF FUEL CAP, AUDIBLE BRAKE LINING WEAR INDICATORS, DISC BRAKES

▶ **BRAVADA, SILHOUETTE ACCIDENT AVOIDANCE:** SIDE MARKER LAMPS AND REFLECTORS, PARKING LAMPS THAT ILLUMINATE WITH HEADLAMPS, FOUR-WAY HAZARD WARNING FLASHERS, BACK-UP LAMPS, CENTER HIGH-MOUNTED STOP LAMP, DIRECTIONAL SIGNAL CONTROL WITH LANE-CHANGE FEATURE, WINDSHIELD DEFROSTER, WASHER AND MULTI-SPEED WIPERS, INSIDE REARVIEW MIRROR, OUTSIDE LEFT AND RIGHT REARVIEW MIRRORS, BRAKE SYSTEM WITH DUAL



©1990 GM CORP. ALL RIGHTS RESERVED. PRINTED IN USA 9/90



The New Generation of
Oldsmobile

O l d s m o b i l e ▼ 1 9 9 1

The New Generation of
Oldsmobile

