


VOL III

1988
OLDSMOBILE
CUTLASS
SUPREME



FROM THE ENGINEERS AT OLDSMOBILE



THE TIME HAS COME TO CHANGE YOUR PERCEPTION OF WHAT AN AMERICAN TOURING CAR CAN BE.

The mission we set for ourselves was clear, but clearly not easily accomplished: offer an American touring car to not only equal, but to surpass, such renowned European nameplates as BMW 735i, Mercedes 190 and 300, and others of similar high repute. Formidable competition indeed.

Where to start? The ingredients that constitute a world-class touring car. And so we went at it.

THEIR RIDE AND HANDLING VERSUS OUR FE3 SUSPENSION.

European touring cars pride themselves on ride and handling, and rightly so. So we took them on—head to head—with our FE3 Touring Sedan Ride and Handling Suspension.

FE3 is the most sophisticated of all the suspension systems Oldsmobile offers. It brings together the advantages of MacPherson front struts with 4-wheel independent suspension. Here each wheel has its own coil spring to individually neutralize any irregularities of road.

With FE3, the spring rates have been increased. The bushings are firmer. The stabilizer bars, larger. The shock absorber valving, more resilient.

What can you expect? Improved cornering, with less heel and sway. Improved steering control, precise and pinpoint-accurate. Improved ride control, sure and steady all the way.

There's more. An automatic electronic leveling system keeps the Oldsmobile Touring Sedan on an even keel, number of passengers or amount of luggage notwithstanding. You get the same great ride whether there is one or five people aboard.

ANTI-LOCK BRAKING.

TAKING THE PANIC OUT OF PANIC STOPS. You're cruising along a rain-slicked freeway, the traffic heavy and moving fast. Suddenly, the 18-wheeler in front of you slams on its brakes. Do you panic?

Worry about loss of control? No longer.

Oldsmobile Touring Sedan is

equipped with an advanced ABS—the Teves

electronic anti-lock braking system. A sensor at each wheel monitors the speed of the wheel and feeds the data to a microprocessor.

Hill the brakes in an emergency situation, and the microprocessor assists by sending commands to apply brake pressure up to 15 times per second to make corrections and to provide stable lock-up-free stopping power when you need it most.

RAISING ERGONOMICS TO NEW HEIGHTS OF EASE AND COMFORT.

Consider those Lear Sieglar bucket seats, which flank the floor console. They feature individual controls for 6-way power adjustments, plus power recliners, power side bolster adjustments, power lumbar and thigh adjustments, and power articulating headrests.

Change the seating adjustments as you drive, as often as you wish, for tailor-made support. The back. The shoulders. The neck. The thighs.

As you would expect, these luxurious foam seats are trimmed in fine perforated leather in the seating areas.

Also, only a handful of world-class automobiles provide genuine wood interior trim. On Touring Sedan, it's genuine bull walnut. Even the inside of the trunk lid is carpeted.

ABOUT 84 TIMES A SECOND, A CENTRAL MICROPROCESSOR MONITORS ENGINE FUNCTIONS.

The engine, a 3800 V6 with Bosch sequential port fuel injection. Each injector is sequentially actuated by electronic sensors on camshaft and crankshaft to determine the exact timing of fuel input. The engine's ECM (Electronic Control Module) determines the precise amount of fuel to inject, based on incoming air mass, engine speed and temperature, throttle position, and oxygen content in the exhaust.

The 3800 V6 features a countering rotating balance shaft for smoothness of operation. Its tuned intake manifold and larger diameter exhaust piping reduce back pressure and increase engine power—as much as 15 hp, and 15 additional ft.-lbs. of torque.

An international full-analog-gauge instrument panel reports engine performance—

speedometer, tachometer, fuel, oil pressure, coolant temperature and voltmeter gauges.

UNRELENTING EYES AND AN UNCOMPROMISING ATTITUDE ABOUT QUALITY.

Quality is checked thoroughly, meticulously, both on-line and end-of-line. Inspectors inspecting inspectors. Engineers inspecting the work of other engineers. They're there to ferret out the slightest imperfection.



Never has an Oldsmobile been so thoroughly inspected, so thoroughly probed, analyzed, evaluated, screened, tested and driven to ensure the quality that was designed in. Only then—only after the most exhaustive inspection procedures imaginable—is a hand-signed approval sticker affixed to each Touring Sedan.

We said *driven* and we meant *driven*. The fact is, every Oldsmobile Touring Sedan is test driven after passing all the other rigorous tests and inspections. Not one out of every hundred. Or one out of every fifty. Or even one out of every five. Every Touring Sedan without exception.

That's why Touring Sedan owners enjoy the benefits of the Quality Commitment Plan—6 years/60,000 miles on the drivetrain, 6 years/100,000 miles against rust-through. See your Oldsmobile dealer for the terms and conditions of this limited warranty.

ENTERING THE 10TH DECADE.

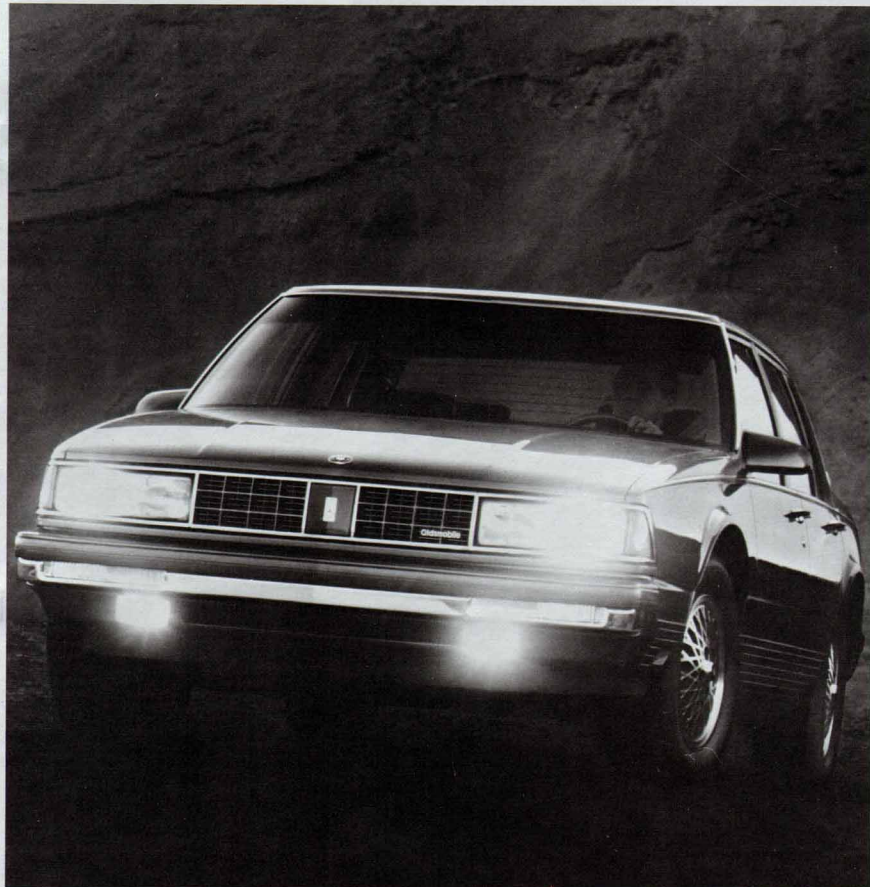
This year marks the 90th Anniversary of the founding of Oldsmobile, and a fitting opportunity to examine first hand our long-standing reputation for automotive excellence.

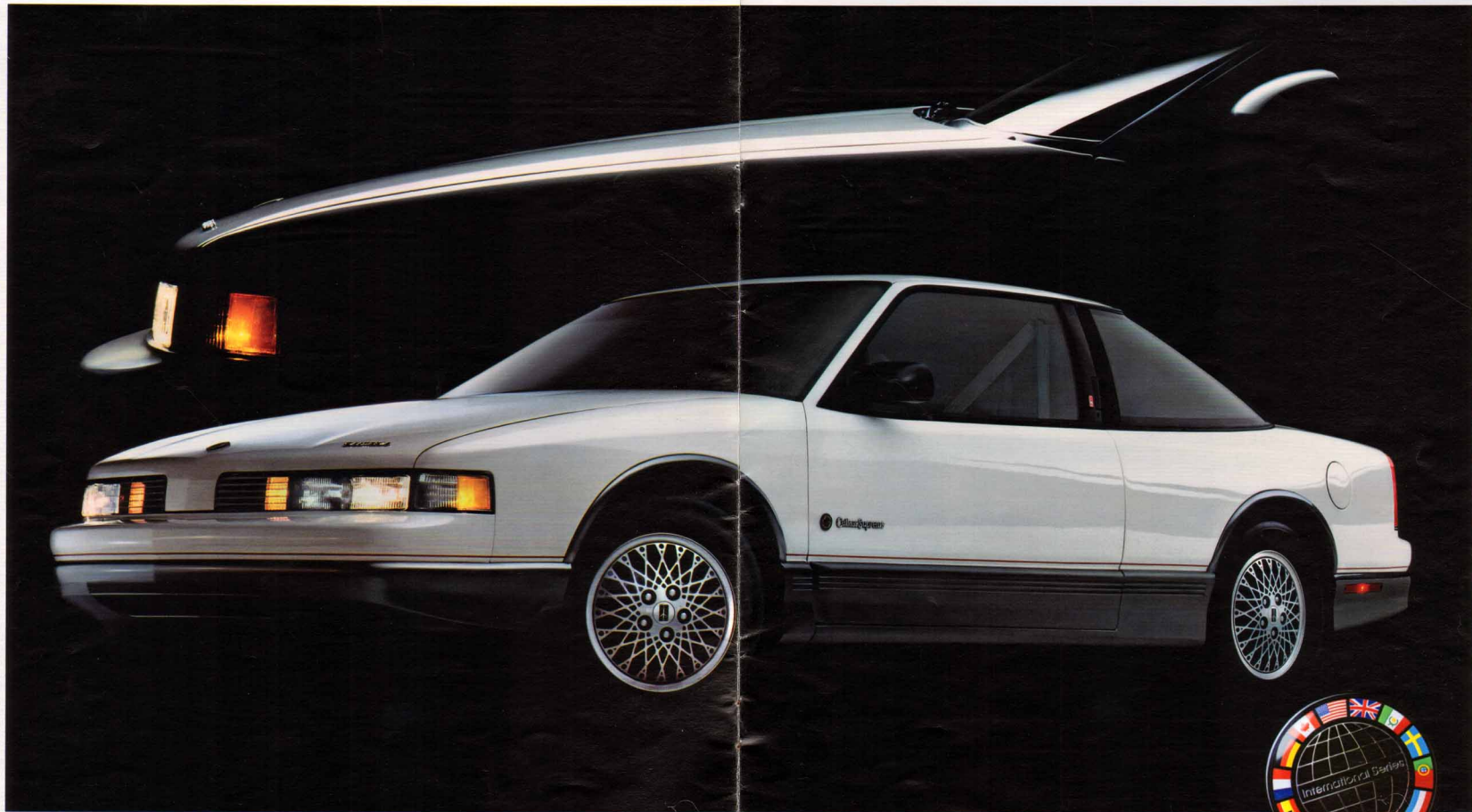
Visit your Oldsmobile dealer, and compare this limited edition Oldsmobile Touring Sedan for all the quality and qualities you associate with its European counterparts. Check it over as we do, with unrelenting eyes. Drive it as we do, with uncompromising scrutiny.

If you do, we sincerely believe it will change your perception of what an American touring car can be.

William W. Lane

W. W. Lane
Vice President
General Motors Corporation
General Manager
Oldsmobile Division





A GREAT NEW DRIVING EXPERIENCE—IN ANY LANGUAGE.
CUTLASS SUPREME INTERNATIONAL SERIES.



**TO A GREAT-HANDLING
CUTLASS SUPREME,
WE'VE INFUSED GRAND
TOURING SOPHISTICATION.**

And it shows. Everywhere. You see it in the Cutlass Supreme International Series' dramatic exterior—with black grille and trim, and functional aero rocker moldings.

Inside, seats that you sit in, not on, as it should be in a serious driver's car. The

ergonomically sculptured, reclining bucket seats literally hug you—with power-operated headrest, thigh and side bolsters. The adjustable lumbar support is power-operated. Four-way manual seat articulation is also standard. As are the center console and 5-speed manual shifter. A 4-speed automatic overdrive transmission is available. The rear passenger compartment, too, offers bucket seat support, with deluxe folding center

console that features convenient storage space and beverage cup holder.

Instrumentation is complete with tachometer—and precise with electronic analog displays.

All grand, but the grand touring experience really begins when you fire up the 2.8-liter multipoint fuel-injected V6 and sample the special FE3 underpinnings. It's an impressive four-wheel independent suspension with touring car

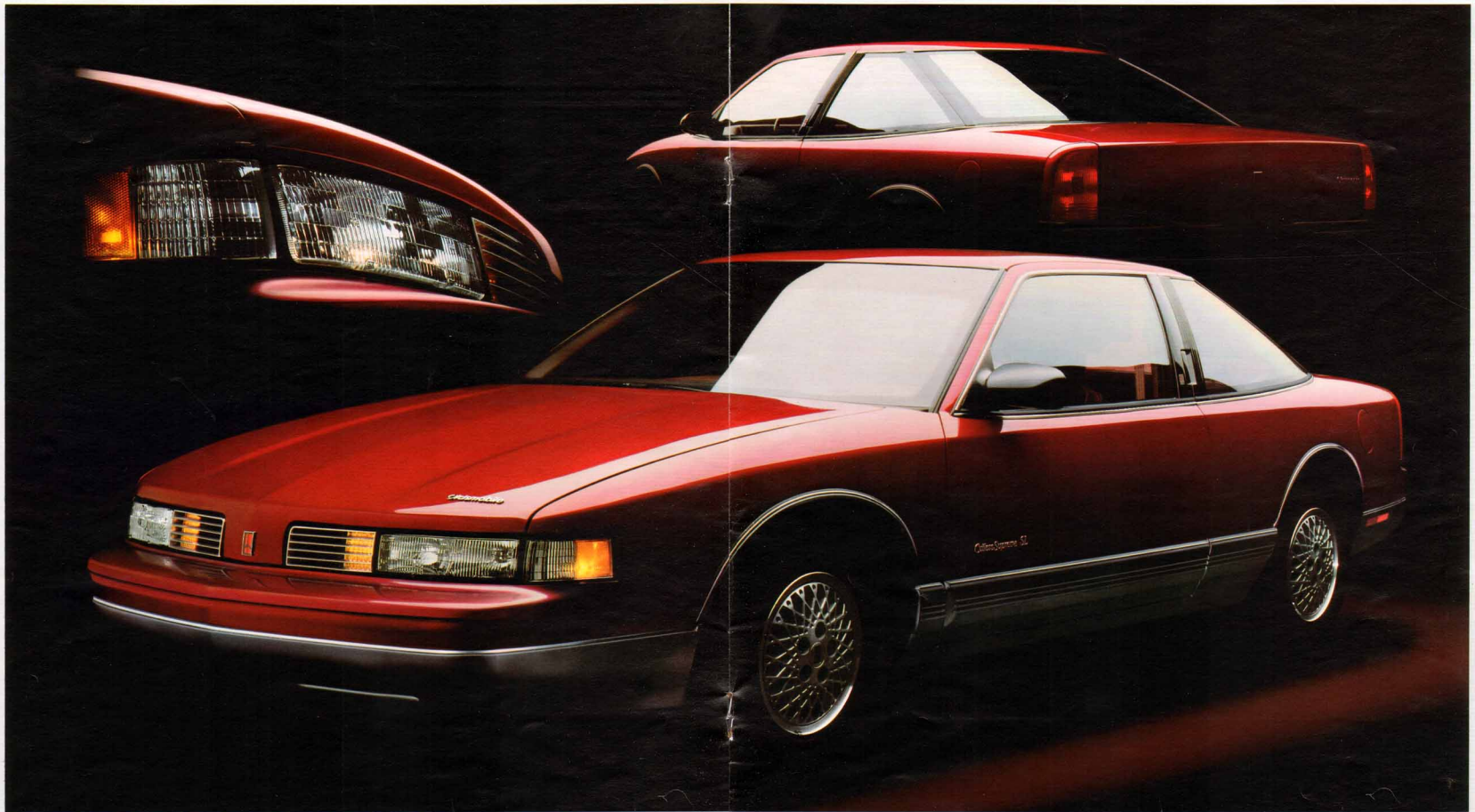


ride and handling capabilities that make the driving experience memorable. Head Cutlass Supreme International Series down some serpentine country road and feel just how grand, grand touring can be.

With leather-wrapped steering wheel and quick-ratio power rack-and-pinion steering, you treat curves and corners like so much straightaway. Lean and sway are virtually imperceptible.

If you love driving, the new Cutlass Supreme International Series speaks your language. Take a test drive now.

Ergonomically contoured front and rear bucket seats are featured.



STYLING AND AERODYNAMICS IN THEIR MOST ADVANCED FORM.
CUTLASS SUPREME SL.



Cutlass Supreme SL interior

WE SPENT OVER FIVE YEARS ENGINEERING DEPENDABILITY AND QUALITY INTO THE NEW CUTLASS SUPREME. IT'S BUILT TO LAST.

It is almost a paradox that a car so sleek and elegantly styled is also tough as nails. But that's Cutlass Supreme. So sleek, it could give aerodynamics lessons to a teardrop. Yet with its extensive, stiff,

upper glass structure and crowned body panels below, it proves itself to be one of the strongest and most rigid Oldsmobiles ever engineered.

The exterior body is also constructed of two-sided galvanized steel for impressive anti-corrosion protection. The exhaust system is stainless steel. Very tough, lightweight and long lasting.

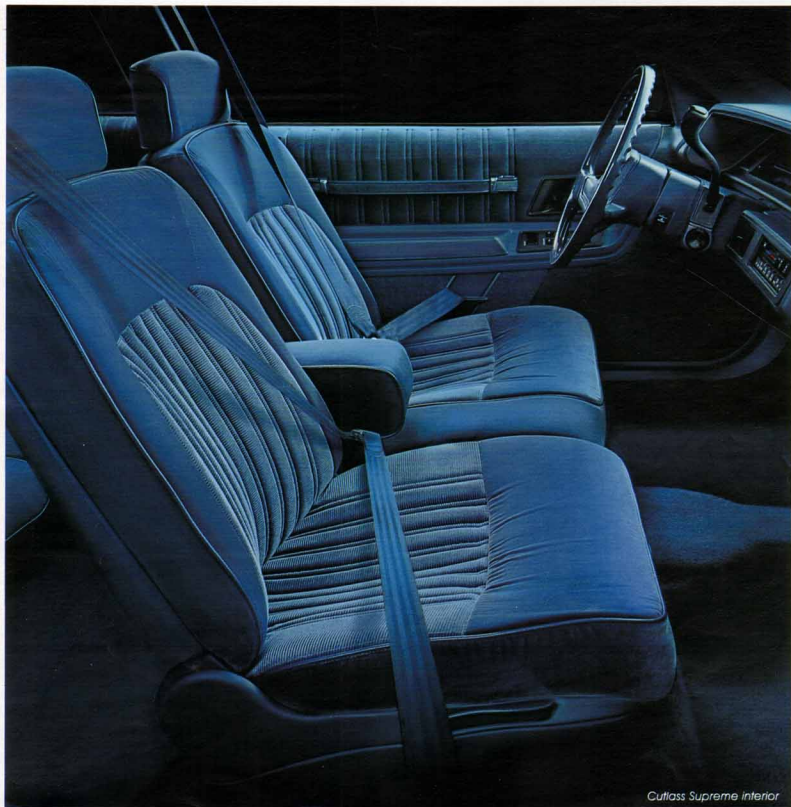
But slip inside a new Oldsmobile Cutlass Supreme and enjoy comforting

elegance in its own unique, stylish form.

Seats are full-foam, comfortable and supportive. In the SL model (above left), the front seat is a 55/45 divided bench with dual controls and reclining seat backs for outstanding individual support. The fabric is soft, durable Prima II velour.

And the rear seat features a relaxing fold-down center armrest.

The Cutlass Supreme provides a custom bench front seat or available 55/45



Cutlass Supreme interior

divided bench (above right), tailored in tasteful, long-wearing Bronte velour.

You may choose either interior in Dark Sapphire Blue, Medium Beechwood, Dark Garnet Red or Medium Gray. If you prefer, bucket seats are available.

For an added touch of luxury, Cutlass Supreme SL may be ordered with genuine leather in the seating areas.

The instrument panel is electronic for quick, precise communication, and

modular for quick and easy servicing. All controls are lighted and very user friendly. You could literally turn the headlamps on while wearing boxing gloves.

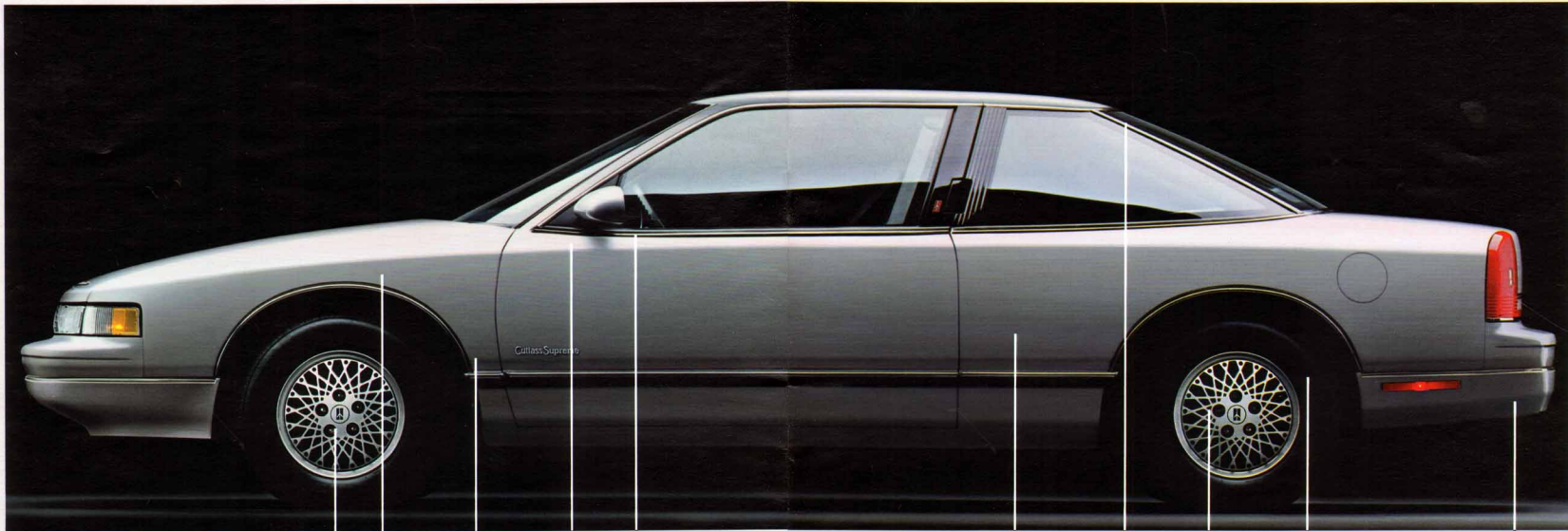
As for six-passenger room? It's impressive in both models, with about an inch more shoulder room than before.

So stretch out and enjoy that great new ride, with 2.8-liter multipoint fuel-injected V6, 4-speed automatic over-drive transmission, power rack-and-pinion

steering, 4-wheel disc brakes and one great suspension.

Well, actually, four—with an independent suspension system at each wheel. With Cutlass Supreme's rigid platform, the agile handling is more like a cat, less like a car. The ride, of course, is Oldsmobile smooth and quiet.

And now—it's time. Try it for yourself. See your Oldsmobile dealer and test drive the all-new Olds Cutlass Supreme.



Olds Cutlass Supreme Coupe. With outstanding aerodynamics, rigid body construction, and four-wheel independent suspension, it's Oldsmobile Cutlass in its most advanced form. And it's the most affordable of the new Cutlass Supremes.

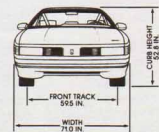
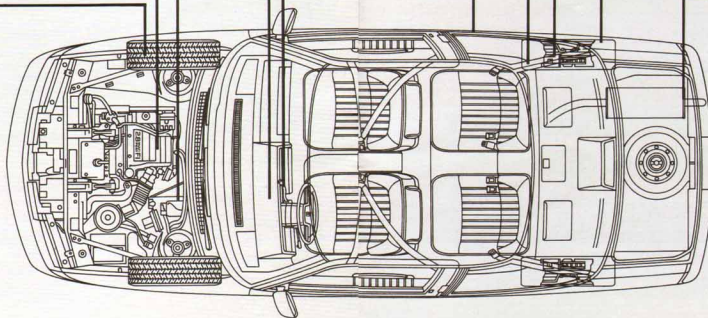
Front-wheel drive
 2.8-liter multiport fuel-injected V6
 Power rack-and-pinion steering
 Electronic instrumentation
 4-speed automatic overdrive transmission
 Two-sided galvanized steel body panels for corrosion protection
 Virtual glass-to-glass rear pillar construction
 4-wheel power disc brakes
 4-wheel independent lubed-for-life suspension
 Long-life stainless steel exhaust system

HIGH-TECH ADVANCEMENTS AND SERIOUS ENGINEERING ADD MEASURABLY TO QUALITY, DURABILITY AND DRIVING SATISFACTION.

CUTLASS SUPREME POWERTRAIN SPECIFICATIONS

ENGINE	STANDARD
Displacement	2.8-liter (173 cu.in.)
Type	V6
Break HP (rpm)	130 @ 4500
Net torque (lbs. ft.)	170 @ 3600
Bore/Stroke (in.)	3.504/2.988
Compression ratio	8.5 to 1
Fuel management	Electronic Fuel Injection (Multiport)
Cooling system (qt.)	11.3
DRIVELINE	
Transaxle	4-speed automatic overdrive*
Final drive ratio	3.33 to 1
SUSPENSION/HANDLING	
Front	MacPherson struts
Rear	Independent
Trailer towing capacity (lbs.†)	3500

*5-speed manual standard on International Series (3.61 to 1 final drive ratio).
 †Recommended maximum capacity when properly equipped. Includes passengers, cargo and equipment.



CUTLASS SUPREME DIMENSIONS

BODY/CHASSIS	COUPE
Wheelbase (in.)	107.5
Track, front/rear (in.)	59.5/58.0
Tire size (std.)	P195/75R14
Wheel size	14 x 5.5
Brake type, front/rear	Disc/Disc
Fuel tank (gals.)	16.3
EXTERIOR	
Length (in.)	192.1
Width (in.)	71.0
Height, curbs (in.)	52.8
Curb weight (lbs.)	3128
INTERIOR	
Headroom, front/rear (in.)	37.8/37.0
Lugroom, front/rear (in.)	42.3/34.8
Shoulder room, front/rear (in.)	57.6/57.2
Seating capacity	6**
Trunk capacity (cu. ft.)	15.5

**4-passenger capacity in International Series.

STANDARD AND AVAILABLE EQUIPMENT

POWERTRAIN

K06 Heater, Engine Block	A	A	A
LB6 Engine, 2.8-ltr V6 with Multiport Fuel Injection	S	S	S
MMS Transmission, 5-Speed Manual with Floor Shifter	A	A	A
MX0 Transmission, Automatic with Overdrive	S	S	A

CHASSIS

Battery, Freedom with Delcotron	S	S	S
Brakes, 4-Wheel Power Disc	S	S	S
Exhaust System, Sport Tuned	S	S	S
Exhaust System, Stainless Steel	S	S	S
Ignition System, High-Energy	S	S	S
Steering, Power-Assisted Rack-and-Pinion	S	S	S
Steering Gear, Quick Ratio	S	S	S
Suspension, 4-Wheel Independent, Lubed-for-Life	S	S	S
Tires, P195/75R14 Steel-Belted Radial-Ply, Blackwall—All-Season	A	A	A
Tires, P215/65R15R Steel-Belted Radial-Ply, Blackwall Eagle GT+4	A	A	A
Wheel Discs, Custom	S	S	S
Wheels, 14" x 5.5"	S	S	S
Wheels, 15" x 6" Aluminum Styled	A	A	A
FZ2 Level 1 Load-Carrying Suspension System —includes Firm Ride Front and Rear Spring and Shock Absorbers, Larger Front Stabilizer Bar and Tires, P205/70R14 Steel-Belted Radial-Ply, Special Ride Blackwall—All-Season	A	A	A
FZ3 Level III Touring Car Ride and Handling Suspension System —consists of special suspension components—includes Steering Wheel, Leather-Wrapped Wheels, Aluminum Styled 15" and Tires, P215/65R15R Steel-Belted Radial-Ply Performance Blackwall	A	A	A
K06 Fan, Engine Cooling Enhances Air Conditioner Performance—recommended for Low-Speed Driving in High-Temperature Areas—Included in V08	A	A	A
N91 Wheel Discs, Simulated Wire with Lock 14"	A	A	A
PC7 Wheels, Styled Color-Coordinated 14"	A	A	A
PH5 Wheels, Aluminum Styled 14"	A	A	A
QMX Tires, P195/75R14 Steel-Belted Radial-Ply, White-Stripe—All-Season	A	A	A
V08 Cooling Equipment, High Capacity—recommended for Medium-Weight Trailer (2,000-3,500 lbs.) Towing Applications in High-Temperature Areas, Includes Transmission and Engine Oil Cooler, and Larger Capacity Radiator with K06 Fan	A	A	A

EXTERIOR STYLING

Headlamps, Composite Hologram	S	S	S
Lower Body Accent Color—Medium Gray Metallic	S	S	S
Lower Body Aero Rocker Moldings in Medium Gray Metallic or Platinum Metallic Trim	S	S	S
Mirrors, Color-Coordinated Outside—Driver Side, Remote Control—Passenger Side, Manual	S	S	S
Moldings, Body Side with Bright Inserts or Gray Trim	S	S	S
Moldings, Wheel-Opening and Black/Bright Window Accent	S	S	S
Specific Black Grille and Moldings, plus Low-Femur Accent Paint Stripes	S	S	S
Specific Front and Rear Fascias	S	S	S
Windows, Soft-Ray Tinted Glass, Flush-Mounted	S	S	S
D67 Mirrors, Black, Electrically Operated Outside—Driver and Passenger Side	A	A	A
D68 Mirrors, Color-Coordinated Outside—Driver and Passenger Side, Remote Control	A	A	A
B12 Package, Functional and Appearance—includes Color-Coordinated Moldings, Body Side and Door Edge Guard	A	A	A

INTERIOR FEATURES

Armrest, Rear Center	S	S	S
Defogger, Side Window	S	S	S
Flash-to-Pass Feature on Turn-Signal Control, with Turn-Signal-On Reminder Chime	S	S	S

S=Standard equipment A=Available equipment **Also available in an option package
†=Available only when other options are added/detected. See your dealer for details.

Front Door Map Storage Pockets and Package Shelf Storage Compartment	S	S	S
Full Lighting of All Controls	S	S	S
Headlamp-On Reminder	S	S	S
Hood Release, Interior Operated	S	S	S
Instrument Panel—with Electronic Speedometer, digital bar graph Fuel Gauge, Odometer, and Trip Odometer	S	S	S

UB3 Cluster, Instrument Panel Rally—Vacuum Fluorescent Electronic Instrument Cluster with Analog and Digital Speedometer with Trip and Main Odometer, Electronic Analog Fuel Gauge, Oil Pressure, Coolant Temperature, Voltmeter, plus indicators for Low Fuel, Oil Pressure, High Engine Temperature and Electronic Analog Tachometer	A	A	A
Lamp, Slope—High-Center-Mounted	S	S	S
Lamps, Courtesy, Glove Box, Instrument Panel and Ashtray	S	S	S
Operating Console with Armrest and Storage	A	A	A
Upward Opening Glove Box Door with Dual Compartment and Cup Holder	S	S	S
Radio, Delco ETR AM/FM Stereo with Seek-Scan and Digital Display Clock—includes 4-Speaker Sound System	S	S	S
UNB Radio, Delco ETR AM/FM Stereo with Seek-Scan, Auto-Reverse Cassette with Music Search and Digital Display Clock—includes Dual Rear Speakers with Extended Range	A	A	A
UT6 Radio, Delco ETR AM/FM Stereo with Seek-Scan, Auto-Reverse Cassette with Music Search, Graphic Equalizer and Digital Display Clock—includes Dual Rear Speakers with Extended Range	A	A	A
UW4 Speakers, Dimensional Sound System—6 Speakers	A	A	A
U75 Antenna, Power Rear Quarter—Bright	A	A	A

SEATING AND TRIMS

Seat, Custom Bench Front with Center Armrest	S	S	S
AM6 Seat, 55/45 Divided Bench with Reclining Seat Back—Driver and Passenger with Front Dual Controls	A	A	A
Seat, Front Contoured Bucket with 4-Way Power Articulation and 4-Way Manual Seat Adjuster	S	S	S
Seat, Individual Rear Buckets with Deluxe Folding Console with Cup Holder and Storage	S	S	S
AC3 Seat Adjuster, 5-Way Power Bucket Seat—Driver Side	A	A	A
A61 Seat Adjuster, 5-Way Divided Bench Seat—Driver Side	A	A	A
WJ7 Trim, Custom Leather in Seating Areas—includes Steering Wheel, Leather-Wrapped	A	A	A

COMFORT/CONVENIENCE FEATURES

Air Conditioner, Four-Season	A	A	A
Safety Belts, Automatic Front	S	S	S
Steering Wheel, Custom 2-Spoke Style	S	S	S
Steering Wheel, Leather-Wrapped with Tilt-Away features	S	S	S
Wiper System, Wef-Arm	S	S	S
AU3 Door Locks, Power	A	A	A
A31 Windows, Power	A	A	A
B3R Interior Sport Package—includes Reclining Bucket Seat, Easy-Entry Passenger Side, Console, with Floor Shifter and Steering Wheel, Leather-Wrapped	A	A	A
B34 Floor Mats, Auxiliary Front Carpet	A	A	A
B35 Floor Mats, Auxiliary Rear Carpet	A	A	A
CD4 Wiper System, Pulse	A	A	A
C49 Defogger, Electric Rear Window	A	A	A
K34 Cruise Control, Electronic with Resume and Acceleration features	A	A	A
N33 Steering Wheel, Tilt-Away	A	A	A
TR6 Convenience Group—includes Under-Hood, Trunk and Interior Courtesy Lamps and Visor Vanity Mirror	A	A	A
TR9 Convenience Group—includes Under-Hood, Trunk and Interior Courtesy Lamps, Visor Vanity Mirror, Inside Day/Night Mirror with Dual Reading and Courtesy Lamps	A	A	A
V56 Luggage, Rear Deck Lid—Block—includes High Level Stop Lamp	A	A	A

S=Standard equipment A=Available equipment **Also available in an option package
†=Available only when other options are added/detected. See your dealer for details.

AFFORDABLE NEW OPTION PACKAGES TO PERSONALIZE YOUR NEW CUTLASS SUPREME.

CUTLASS SUPREME OPTION PACKAGES

(All Orders must include only ONE Option Package)

K34 Cruise Control, Electronic with Resume and Acceleration features	15A	15B	15C	15D	15E	15A	15B	15C	15D	15A	15B	15C	15D	15A	15B	15C	
N33 Steering Wheel, Tilt-Away	*	*	*	*	*	*	*	*	*	*	*	*	*	*	*	*	*
B34 Floor Mats, Auxiliary Front Carpet	*	*	*	*	*	*	*	*	*	*	*	*	*	*	*	*	*
B35 Floor Mats, Auxiliary Rear Carpet	*	*	*	*	*	*	*	*	*	*	*	*	*	*	*	*	*
CD4 Wiper System, Pulse	*	*	*	*	*	*	*	*	*	*	*	*	*	*	*	*	*
A31 Windows, Power Side	*	*	*	*	*	*	*	*	*	*	*	*	*	*	*	*	*
AU3 Door Locks, Power	*	*	*	*	*	*	*	*	*	*	*	*	*	*	*	*	*
TR6 Convenience Group—includes Under-Hood, Trunk and Interior Courtesy Lamps and Visor Vanity Mirror	*	*	*	*	*	*	*	*	*	*	*	*	*	*	*	*	*
AC31 Seat Adjuster, 5-Way Power, Driver Side	*	*	*	*	*	*	*	*	*	*	*	*	*	*	*	*	*
D67 Mirrors, Color-Coordinated, Electrically Operated Outside—Driver and Passenger Side	*	*	*	*	*	*	*	*	*	*	*	*	*	*	*	*	*

S=Standard Equipment *With Divided Bench Seat (A61) or Bucket Seat (AC3)

STANDARD EXTERIOR COLORS (Actual color paint chips available. See your salesperson.)

13 Platinum Metallic ● ▲	52 Copper Beige ● ▲	Cutlass Supreme International Series paint schemes (primary color/secondary color)	14 Black Metallic/87 Medium Gray Metallic
14 Black Metallic ● ▲	62 Light Beechwood Metallic ● ▲	40 White/87 Medium Gray Metallic	40 White/87 Medium Gray Metallic
22 Light Sapphire Blue Metallic ● ▲	72 Medium Garnet Red Metallic ● ▲	13 Platinum Metallic/87 Medium Gray Metallic	73 Bright Red/13 Platinum Metallic
27 Medium Sapphire Blue Metallic ● ▲	73 Bright Red ● ▲	13 Platinum Metallic/13 Platinum Metallic	73 Bright Red/87 Medium Gray Metallic
40 White ● ▲	87 Medium Gray Metallic ● ▲		87 Medium Gray Metallic/13 Platinum Metallic

Note: Cutlass Supreme SL Coupe features a standard Secondary color, 87 Medium Gray Metallic, regardless of Primary color.

KEY

Cutlass Supreme ● Cutlass Supreme SL ▲

Important—A word about this catalog: We have tried to make this catalog as comprehensive and factual as possible, and we hope you find it helpful. However, since the time of printing, some of the information you will find here may have been updated. Also, some of the equipment shown or described throughout this Olds catalog is available at extra cost. Your dealer has details; before ordering, you should be brought up-to-date. The right is reserved to make changes at any time, without notice, in prices, colors, materials, equipment, specifications and models. Check with your Olds dealer for complete information.

A word about engines: Oldsmobiles are equipped with engines produced by GM or suppliers to GM worldwide.

A word about assembly, components and optional equipment in these Oldsmobile products: The Oldsmobiles described in this catalog are assembled at facilities operated by General Motors or GM of Canada. These vehicles incorporate thousands of different components produced by car groups or various component divisions of General Motors and by various suppliers worldwide to GM. From time to time during the manufacturing process, it may be necessary, in order to meet public demand for particular vehicles or equipment, or to meet federally mandated emissions, safety and fuel economy requirements, or for other reasons, to produce Oldsmobile products with different components or differently sourced components than initially scheduled. All such components have been approved for use in Oldsmobile products and will provide the quality performance associated with the Oldsmobile name. With respect to extra-cost optional equipment, make certain you specify the type of equipment you desire on your vehicle when ordering it from your dealer. Some options may be unavailable when your car is built. Your dealer receives advice regarding current availability of options. You may ask your dealer for this information. GM also requests your dealer to advise you if the option you ordered is unavailable. We suggest that you verify that your car includes the optional equipment you ordered, or if there are changes, that they are acceptable to you.

Occupant protection features: Automatic safety belt system

for driver and right front passenger • Manual lap safety belts, center front and all rear positions • Energy-absorbing steering column • Energy-absorbing instrument panel • Energy-absorbing seat back tops, front • Laminated safety windshield glass • Safety interlocking door latches • Side-guard door beams • Passenger-guard inside door lock handles • Inertia-locking, folding front seat backs • Safety armrests • Head restraints, driver and right front passenger (adjustable).

Accident avoidance features: Side marker lights and reflectors • Parking lamps that illuminate with headlamps • Four-way hazard warning flasher • Back-up lights • Center high-mounted stop lamp • Directional signal control with lane change feature • Windshield defroster, washer and multi-speed wipers • Inside rearview mirror • Dual outside rearview mirrors • Brake system with dual master cylinder and warning light • Starter safety switch • Dual action hood latch • Low-grain finish on inside windshield moldings, wiper arms and blades, metallic steering wheel surfaces • Illuminated heater and defroster controls • Tires with built-in tread-wear indicators.

Theft-deterrence features: Audible reminder for ignition key removal • Theft-deterrent steering column lock • Visible vehicle identification number.

A word about updated service information: Oldsmobile regularly sends its dealers useful service bulletins about Oldsmobile products. Oldsmobile monitors product performance in the field. We then prepare bulletins for servicing our products better. Now you can get these bulletins, too. Ask your dealer. To get ordering information, call toll free 1-800-551-4123.

The 1988 Cutlass Supremes are carefully designed and built to resist corrosion, so the application of additional rust-proofing is neither necessary nor required. Oldsmobile's confidence in its extensive anti-corrosion protection is reflected in a new vehicle warranty which includes 6-year/100,000-mile rust-through protection. See your dealer for terms and conditions of the limited warranty.



OLDSMOBILE QUALITY.
FEEL IT.