

# OLDSMOBILE



THE LIMITED EDITION  
**TOURING SEDAN**

1 · 9 · 8 · 8





## THE TIME HAS COME TO CHANGE YOUR PERCEPTION OF WHAT AN AMERICAN TOURING CAR CAN BE.

The mission we set for ourselves was clear, but clearly not easily accomplished: offer an American touring car to not only equal, but to surpass, such renowned European nameplates as BMW 735i, Mercedes 190 and 300, and others of similar high repute. Formidable competition indeed.

Where to start? The ingredients that constitute a world-class touring car. And so we went at it.

### THEIR RIDE AND HANDLING VERSUS OUR FE3 SUSPENSION.

European touring cars pride themselves on ride and handling, and rightly so. So we took them on—head to head—with our FE3 Touring Sedan Ride and Handling Suspension.

FE3 is the most sophisticated of all the suspension systems Oldsmobile offers. It brings together the advantages of MacPherson front struts with 4-wheel independent suspension. Here each wheel has its own coil spring to individually neutralize any irregularities of road.

With FE3, the spring rates have been increased. The bushings are firmer. The stabilizer bars, larger. The shock absorber valving, more resilient.

What can you expect? Improved cornering, with less heel and sway. Improved steering control, precise and pinpoint-accurate. Improved ride control, sure and steady all the way.

There's more. An automatic electronic leveling system keeps the Oldsmobile Touring Sedan on an even keel, number of passengers or amount of luggage notwithstanding. You get the same great ride whether there is one or five people aboard.

### ANTI-LOCK BRAKING.

**TAKING THE PANIC OUT OF PANIC STOPS.** You're cruising along a rain-slicked freeway, the traffic heavy and moving fast. Suddenly, the 18-wheeler in front of you slams on its brakes. Do you panic?

Worry about loss of control? No longer.

Oldsmobile Touring Sedan is

equipped with an advanced ABS—the Teves

electronic anti-lock braking system. A sensor at each wheel monitors the speed of the wheel and feeds the data to a microprocessor.

Hill the brakes in an emergency situation, and the microprocessor assists by sending commands to apply brake pressure up to 15 times per second to make corrections and to provide stable lock-up-free stopping power when you need it most.

### RAISING ERGONOMICS TO NEW HEIGHTS OF EASE AND COMFORT.

Consider those Lear Sieglar bucket seats, which flank the floor console. They feature individual controls for 6-way power adjustments, plus power recliners, power side bolster adjustments, power lumbar and thigh adjustments, and power articulating headrests.

Change the seating adjustments as you drive, as often as you wish, for tailor-made support. The back. The shoulders. The neck. The thighs.

As you would expect, these luxurious foam seats are trimmed in fine perforated leather in the seating areas.

Also, only a handful of world-class automobiles provide genuine wood interior trim. On Touring Sedan, it's genuine bull walnut. Even the inside of the trunk lid is carpeted.

### ABOUT 84 TIMES A SECOND, A CENTRAL MICROPROCESSOR MONITORS ENGINE FUNCTIONS.

The engine, a 3800 V6 with Bosch sequential port fuel injection. Each injector is sequentially actuated by electronic sensors on camshaft and crankshaft to determine the exact timing of fuel input. The engine's ECM (Electronic Control Module) determines the precise amount of fuel to inject, based on incoming air mass, engine speed and temperature, throttle position, and oxygen content in the exhaust.

The 3800 V6 features a counterrotating balance shaft for smoothness of operation. Its tuned intake manifold and larger diameter exhaust piping reduce back pressure and increase engine power—as much as 15 hp, and 15 additional ft-lbs. of torque.

An international full-analog-gauge instrument panel reports engine performance—

speedometer, tachometer, fuel, oil pressure, coolant temperature and voltmeter gauges.

### UNRELENTING EYES AND AN UNCOMPROMISING ATTITUDE ABOUT QUALITY.

Quality is checked thoroughly, meticulously, both on-line and end-of-line. Inspectors inspecting inspectors. Engineers inspecting the work of other engineers. They're there to ferret out the slightest imperfection.



Never has an Oldsmobile been so thoroughly inspected, so thoroughly probed, analyzed, evaluated, screened, tested and driven to ensure the quality that was designed in. Only then—only after the most exhaustive inspection procedures imaginable—is a hand-signed approval sticker affixed to each Touring Sedan.

We said *driven* and we meant *driven*. The fact is, every Oldsmobile Touring Sedan is test driven after passing all the other rigorous tests and inspections. Not one out of every hundred. Or one out of every fifty. Or even one out of every five. Every Touring Sedan without exception.

That's why Touring Sedan owners enjoy the benefits of the Quality Commitment Plan—6 years/60,000 miles on the drivetrain, 6 years/100,000 miles against rust-through. See your Oldsmobile dealer for the terms and conditions of this limited warranty.

### ENTERING THE 10TH DECADE.

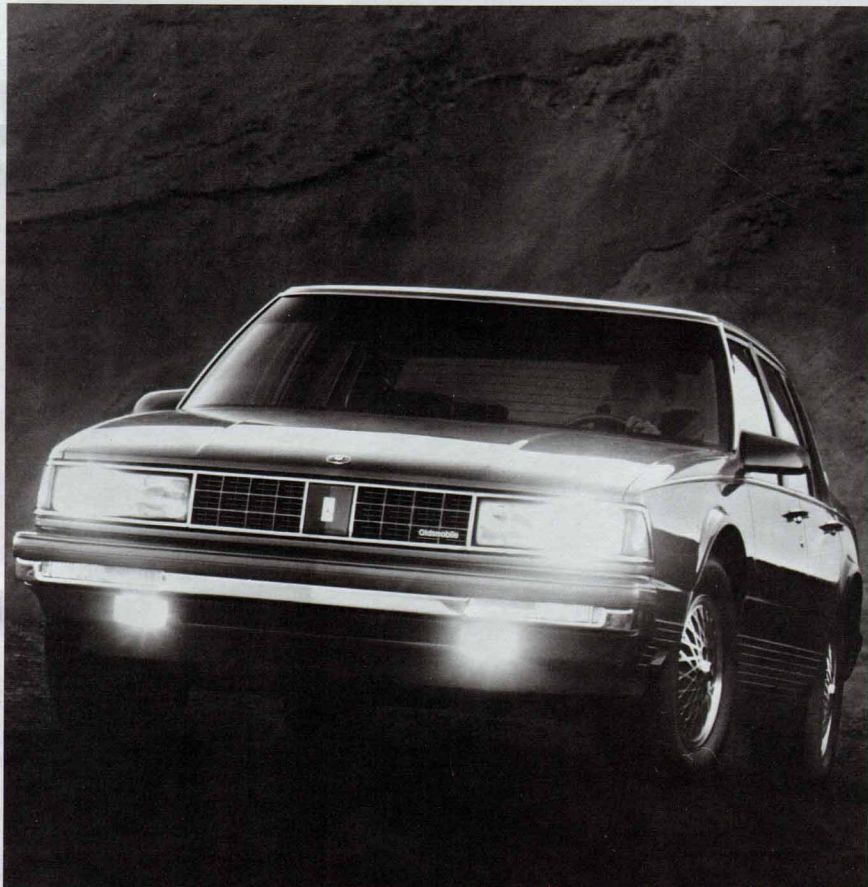
This year marks the 90th Anniversary of the founding of Oldsmobile, and a fitting opportunity to examine first hand our long-standing reputation for automotive excellence.

Visit your Oldsmobile dealer, and compare this limited edition Oldsmobile Touring Sedan for all the quality and qualities you associate with its European counterparts. Check it over as we do, with unrelenting eyes. Drive it as we do, with uncompromising scrutiny.

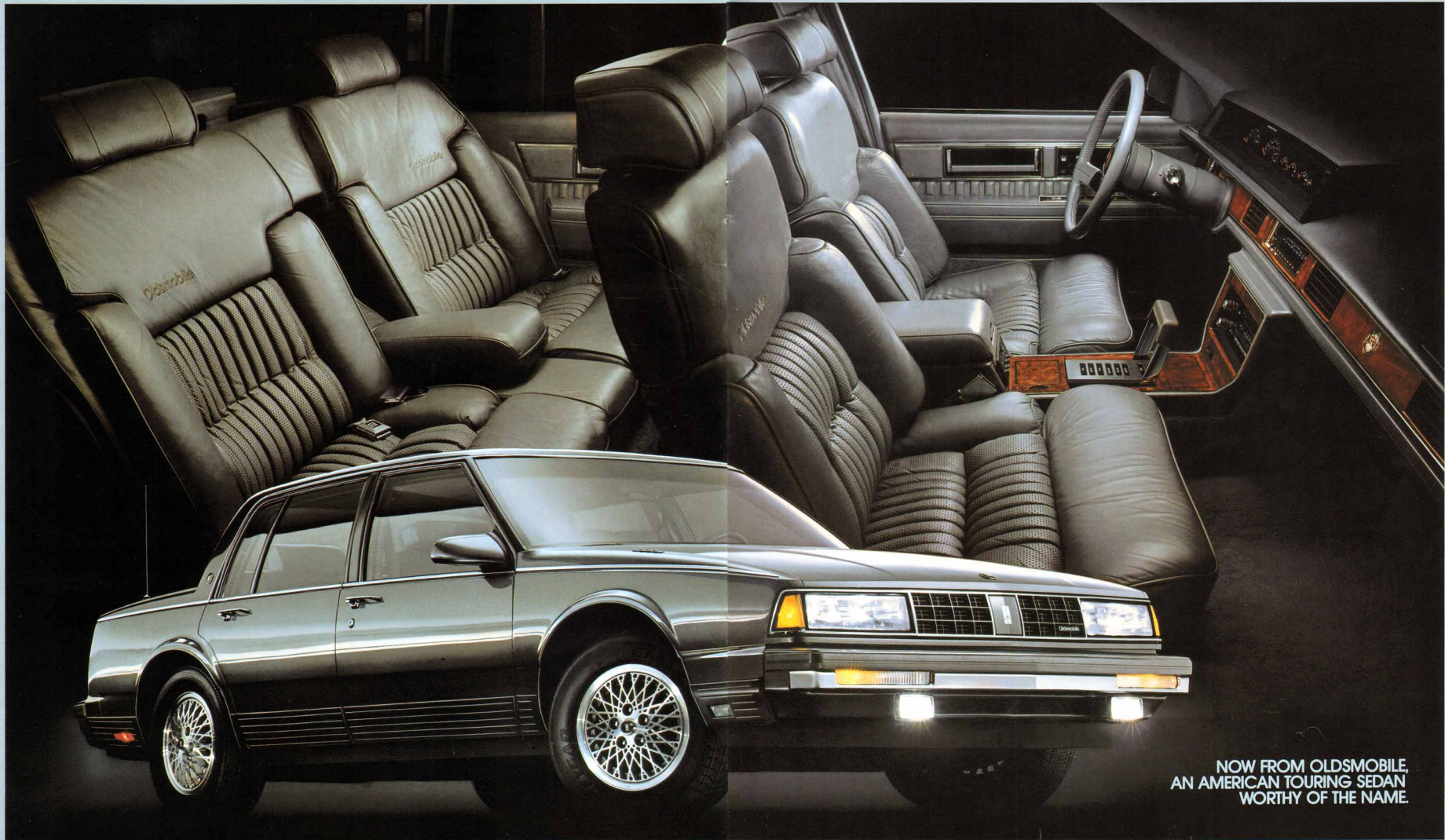
If you do, we sincerely believe it will change your perception of what an American touring car can be.

*William W. Lane*

W. W. Lane  
Vice President  
General Motors Corporation  
General Manager  
Oldsmobile Division







NOW FROM OLDSMOBILE,  
AN AMERICAN TOURING SEDAN  
WORTHY OF THE NAME.





What to look for when you personally inspect and test drive Oldsmobile's Touring Sedan. Notice the thick, gleaming, hand-rubbed look of the multicoat/high-gloss enamel that is flowed over the body. The elegant cloisonne Touring Sedan emblems. The distinctive Touring Sedan look. The muted gray grille, composite headlamps, lower front valance that functions as an air

dam. The wide-ribbed body moldings, also in muted gray, that provide continuity to the front and rear fascias. Handsome 15" aluminum-styled wheels.

Slip inside, and discover the comfort of Lear Siegler bucket seats with 6-way power. Try the recliner, the side bolsters, the lumbar and thigh adjustment, the articulating

headrest. Feel the glove-soft luxury of the perforated leather in the seating areas, the genuine burli walnut trim.

Dial in the electronically tuned AM/FM stereo radio with seek-scan, auto-reverse cassette with music search, digital clock and six-speaker dimensional sound system.

Turn the ignition key. Adjust the leather-wrapped Tilt-Wheel steering. Accelerate

the sequentially fuel-injected V6. Head for some open roads, and give the FE3 suspension a good workout.

Then, forget about being a judge or a critic. Just sit back, relax, and enjoy the quiet, the comfort, the quality and the luxury on any road you choose.

That may well be the best part of all.

The Oldsmobile Touring Sedan. So complete in every respect, it leaves virtually nothing to be desired.

Standard equipment includes: 1 Full Front Console with Floor Shift, Storage, and Seat Adjusters 2 Front Bucket Seats with Six-Way Power Adjuster, Power Recliner, Power Adjustable Side Bolster, Power Lumbar, Power Thigh Support, Power Articulating Headrest—Fore and Aft with Manual Vertical Adjustment 3 Radio-ETR AM/FM Stereo with Seek-Scan, Auto-Reverse Cassette with Digital Display Clock, Dimensional Sound Six-Speaker System 4 Clear Foglamps 5 Electric Outside Driver and Passenger Mirrors with Driver Electric Defog 6 Analog Gage Cluster with Speedometer, Tachometer, Fuel, Oil Pressure, Water, Temperature, and Voltmeter/Gages 7 Anti-Lock Braking System 8 Leather-Wrapped Steering Wheel with Tilt Steering Column 9 Power Antenna 10 15-inch Styled-Aluminum Wheels with Performance Blackwall Steel-Belted Radial Tires.

■ Cloisonne Emblems for Hood, Sail Panel and Deck Lid ■ Special Lower Body Side Ribbed Moldings in Metallic Gray with Continuity to Front and Rear Fascias ■ Metallic Gray Wheel-Opening Moldings and Window-frame Moldings ■ Special "B" Pillar Applique in Metallic Gray ■ Special Bright Upper Full Body Side Molding ■ Tail Lamps with Body-Color Bezels ■ Back-up Lamps with Neutral Density Lens and Body-Color Bezels ■ Trunk-Mounted Cargo Net ■ Rear Window Defogger ■ Illumination Package, Front Door Locks/Interior ■ Park/Turn Lamps with Amber Lens ■ Cornering Lamps ■ Rear Manual Headrest, Fold-Down Center Armrest ■ Leather Interior Trim for the Seating Areas with Perforated Leather Inserts ■ Genuine Burli Walnut Veneer on Instrument Panel, Console, Front and Rear Carpeted Floor Mats ■ Reminder Package ■ Air Conditioner—Electronic Automatic ■ Pulse Windshield Washer and Wiper ■ Visor Vanity Mirrors, Illuminated—RH and LH ■ Sail Panel Reading Lamps ■ Electronic Cruise Control ■ Deluxe Trunk Trim ■ Electric Lock Release Trunk Lid ■ FE3 Touring Sedan Ride and Handling Suspension ■ Tuned Exhaust with Dual Outlets ■ 3800 V6 with Sequential Port Fuel Injection ■ High-Capacity Cooling Equipment ■ High-Capacity Battery System ■ Automatic Transmission.

The only options being:

■ GF5 Astrolong ■ DD8 Automatic Day/Night Mirror ■ KO6 Engine-Block Heater ■ T82 Twilight Sentinel ■ U08 Bose Radio and Speaker System ■ UX1 Radio-ETR AM Stereo/FM Stereo/Cassette ■ AU4 Automatic Door Locks ■ NO8 Remote Fuel Filler Lock ■ A91 Trunk Lid Pull Down Power ■ B88 Body Side Molding ■ U51 Driver Information System. That's all. That's it.



TOURING SEDAN DIMENSIONS	
BODY/CHASSIS	SEDAN
Wheelbase (in)	110.8
Track, front (in)	60.3
Track, rear (in)	59.8
Tire size (avail)	P215/65R15
Wheel size (avail)	15 x 6
Brake type, front/rear	Disc/Drum/Anti-lock system
Fuel tank (gals.)	18.0

EXTERIOR	
Length (in)	196.4
Width (in)	72.4
Height (in) (curb)	55.1
Curb weight (lbs)	3334

INTERIOR	
Front seat	
Headroom (in)	39.3*
Legroom (in)	42.4
Shoulder room (in)	58.9
Rear seat	
Headroom (in)	38.1*
Legroom (in)	41.5
Shoulder room (in)	58.8
Seating capacity	5
Trunk capacity (cu. ft.)	16.4

\*Headroom is reduced front and rear when optional Astrolong is ordered.

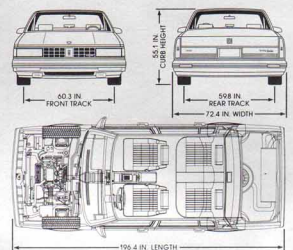
#### TOURING SEDAN POWERTRAIN SPECIFICATIONS

ENGINE	STANDARD
Displacement	3800 (231 cu. in.)
Engine	V6
Brake HP (RPM)	165 @ 5200
Net torque (lbs. ft.)	215 @ 2000
Bore/Stroke (in.)	3.800/3.400
Compression ratio	8.5 to 1
Fuel management	Electronic Fuel Injection (Sequential port)
Lock to lock	397L/391R
Cooling system (at)	12.37

DRIVELINE	
Transaxle	4-speed automatic
Final drive ratio	2.97 to 1

#### SUSPENSION/HANDLING

Front	MacPherson struts
Rear	Full independent
Tuning diameter curb to curb (ft.)	39.7L/39.1R
Recommended trailer towing maximum capacity (lbs.)	3000



\*Receives C-Quam™ AM stereo broadcasts. Most AM stereo stations across the country broadcast in C-Quam, but some do not. Check with your local stations for compatibility in your area.



TOURING SEDAN EXTERIOR COLORS: Platinum Metallic, Dark Sapphire Blue Metallic, White, Black, Medium Garnet Red Metallic, Dark Garnet Red Metallic, Medium Gray Metallic. TOURING SEDAN INTERIOR COLORS: Dark Sapphire Blue, Medium Gray, Dark Garnet Red.

**Important—A word about this catalog:** We have tried to make this catalog as comprehensive and factual as possible, and we hope you find it helpful. However, since the time of printing, some of the information you will find here may have been updated. Also, some of the equipment shown or described throughout this Olds catalog is available at extra cost. Your dealer has details; before ordering, you should be brought up-to-date. The right is reserved to make changes at any time, without notice, in prices, colors, materials, equipment, specifications and models. Check with your Olds dealer for complete information.

**A word about engines:** Oldsmobiles are equipped with engines produced by GM or suppliers to GM worldwide.

**A word about assembly components and optional equipment in these Oldsmobile products:** The Oldsmobile described in this catalog is assembled at facilities operated by General Motors. This vehicle incorporates thousands of different components produced by car groups of various component divisions of General Motors and by various suppliers worldwide to GM. From time to time during the manufacturing process, it may be necessary, in order to meet public demand for particular vehicle or equipment, or to meet federally mandated emissions, safety and fuel economy requirements, or for other reasons, to produce Oldsmobile products with different

components or differently sourced components than initially scheduled. All such components have been approved for use in Oldsmobile products and will provide the quality performance associated with the Oldsmobile name. With respect to extra-cost optional equipment, make certain you specify the type of equipment you desire on your vehicle when ordering it from your dealer. Some options may be unavailable when your car is built. Your dealer receives advice regarding current availability of options. You may ask the dealer for this information. GM also requests the dealer to advise you if the option you ordered is unavailable. We suggest that you verify that your car includes the optional equipment you ordered, or if there are changes, that they are acceptable to you.

**Standard occupant protection features:** Manual lap/shoulder safety belts for driver and right front passenger (driver side includes visual and audible warning system) • Manual lap safety belts at each rear seat position • Energy-absorbing steering column • Energy-absorbing instrument panel • Energy-absorbing front seat back tops • Laminated safety windshield glass and tempered safety side and rear window glass • Safety interlocking door latches • Side-guard door beam • Passenger-guard inside door lock handles • Safety armrests • Adjustable head restraints, driver and right front passenger • Dual sun visors.

**Standard accident avoidance features:** Side marker lights and reflectors • Parking lamps that illuminate with headlamps • Four-way hazard warning flasher • Backup lights • Center high-mounted stop lamp • Directional signal control with lane change feature • Windshield defroster, pulse washer and dual speed wipers • Inside rearview mirror with vinyl-bonded glass • Outside rearview mirror, left and right side • Anti-lock brake system with dual master cylinder and warning light • Starter safety switch • Dual action hood latch system • Low-glare finish on instrument panel top, inside windshield moldings, wiper arms, blades, metallic steering wheel surfaces • Illuminated heater and defroster controls • Tires with built-in tread-wear indicators.

**Standard theft deterrence features:** Audible reminder for ignition key removal • Theft-deterrent steering column lock • Visible vehicle identification number.

**A word about updated service information:** Oldsmobile regularly sends its dealers useful service bulletins about Oldsmobile products. Oldsmobile monitors product performance in the field. We then prepare bulletins for servicing our products better. Now you can get these bulletins, too. Ask your dealer, to get ordering information, call toll free 1-800-551-4123.



Now, all Oldsmobiles are backed by the GM Quality Commitment Plan—a 6-year, 60,000-mile powertrain and 5-year, 100,000-mile rust-through protection warranty. See your Olds dealer for terms and conditions of this new limited warranty.

## THE LIMITED EDITION TOURING SEDAN



**Oldsmobile**  
Oldsmobile Quality. Feel it.