

# 1986 OLDSMOBILE CUTLASS SUPREME



Canada

Official Supplier  
to The 1986  
World Exposition

EXPO



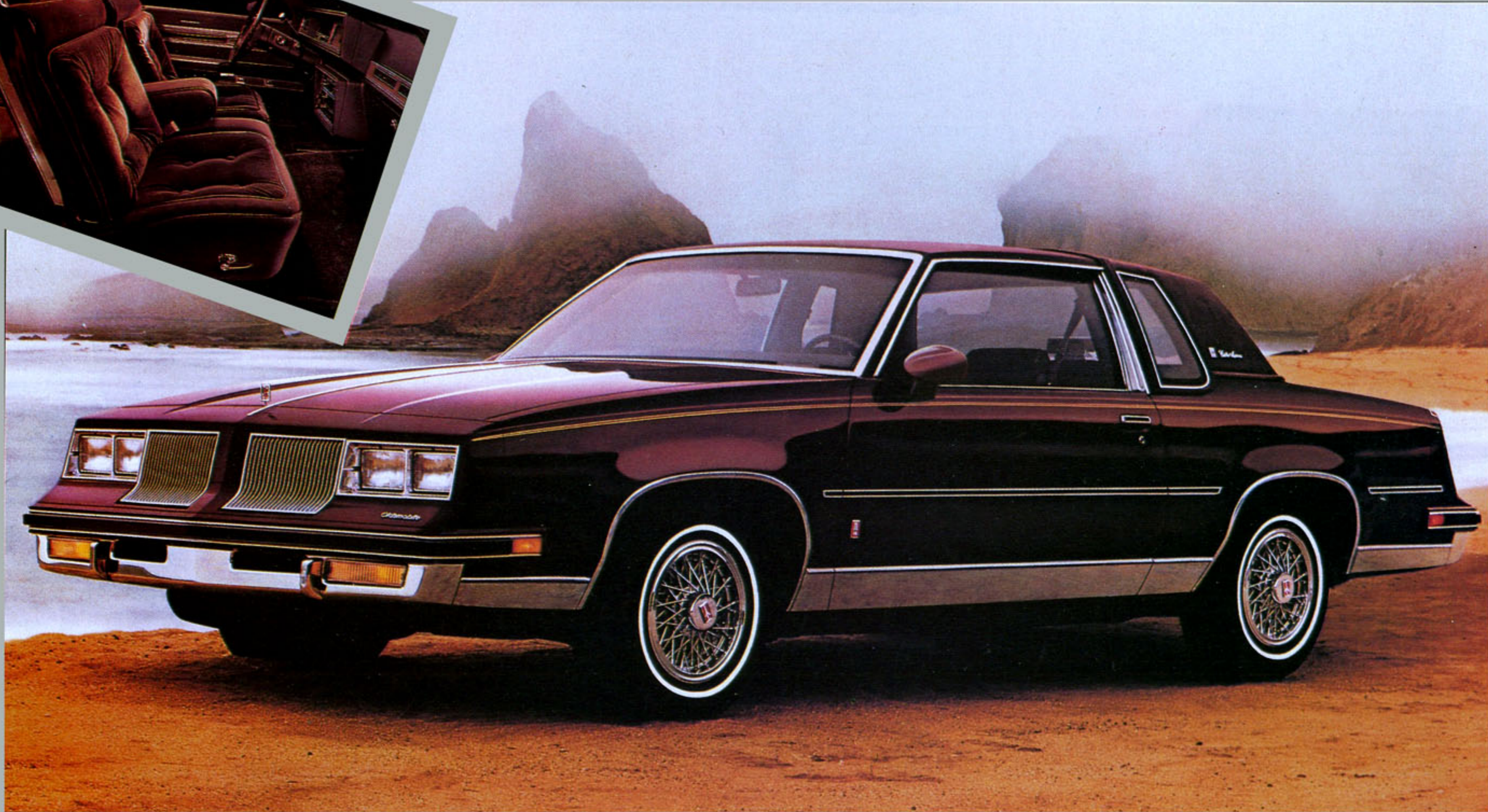
# CUTLASS SUPREME BROUGHAM COUPE

No wonder Cutlass Supreme is so very, very popular.

Sculptured styling that's strong and aerodynamically correct. Spirited performance, too, with the standard 3.8 Litre 2-barrel V6 engine.

You'll notice Cutlass Supreme Brougham's luxurious character in its ride. Quiet and smooth. And in its interior appointments. Rich, sumptuous. Full-foam seating in Summit velour is standard. Or choose leather seating from the

extensive list of available features. You'll notice how responsive Cutlass Supreme Brougham is in the way it handles the road. For those who demand the most in ride control, a Firm Ride and Handling Package is available.



# CUTLASS SUPREME BROUGHAM SEDAN

You may never have enjoyed your driving as much as you will in Cutlass Supreme Brougham.

In town, on the highway, wherever you choose to travel, you'll find your Cutlass Supreme Brougham a pleasure to drive.

Inside, its quiet and comfortable environment is enhanced by rich velour fabrics, exquisitely tailored over deep, cushioned seats. The spacious passenger compartment provides first-class accommodations for six.

And its long list of available features includes air conditioning, Delco-GM sound, cruise control, six-way power driver's seat, tilt-wheel steering, and a powerful 5.0 Litre 4-barrel V8 engine. Plus, power steering and brakes are standard.



## MODEL AVAILABILITY

Cutlass Supreme:  
2-Door Coupe, 4-Door Sedan  
Cutlass Supreme Brougham:  
2-Door Coupe, 4-Door Sedan  
Cutlass Salon: 2-Door Coupe

## CUTLASS SUPREME STANDARD EQUIPMENT

### Chassis/Body/Mechanical

- Engine, 3.8 Litre V6, 2-Barrel
- Automatic Transmission with Column Shift
- High-Energy Ignition System
- Power Steering
- Low-Drag Power Front Disc Brakes and Rear Drum Brakes
- Independent Front Suspension with Coil Springs and Stabilizer Bar
- Rear Coil Springs and Stabilizer Bar
- Delcotron
- Bumper Rub Strips with Integral Guards, Front and Rear
- Extensive Anti-Corrosion Treatments
- Hood Centre and Rear Mouldings, plus Stand-Up Front-End Panel Ornament
- Bright Roof Drip, Rocker Panel and Wheel-Opening Mouldings
- Fluidic Windshield Washer
- Recessed Windshield Wipers
- Deck Lid and License Pocket Mouldings
- P195/75R14 Steel-Belted Radial-Ply, Blackwall Tires – All-Seasons
- Deluxe Bright Wheel Discs
- Outside Rearview Mirror, Driver Side (Sedan)
- Outside Mirrors, LH and RH Manual (Coupes).

### Interior

- Full-Foam Seat Construction
- Custom Bench Front Seat with Centre Armrest
- Armrests, Front and Rear
- Electric Rear Window Defroster
- Cut-Pile Carpeting, Wall to Wall with Carpeted Lower Door Panels
- Interior-Operated Hood Lock Release
- Multi-Function Column Mounted Lever
- Cigar Lighter
- Headlamp-On Warning
- Dome Light
- Inside Day-Night Rearview Mirror
- Deluxe Safety Belts
- Deluxe Steering Wheel
- AM/FM Stereo Radio with Seek/Scan – includes Dual Front and Rear Speakers
- Flo-Thru Ventilation
- Automatic Lamp Switches, Front Doors
- Front Door-Pull Handles
- Centre High-Mounted Stop Lamp.

## CUTLASS SUPREME BROUGHAM

### Additional Standard Equipment

- Belt Reveal Mouldings
- Wide



Engine	Opt. No.	Engine Availability	Transmission Availability	
			Automatic Transmission (MX1)	Automatic w/Overdrive (MX0)
3.8 Litre 2-Bbl. V6 (A)	LD5	STD	STD	NA
5.0 Litre 4-Bbl. V8 (B)	LG4	EC	STD	NA

STD—Standard    NA—Not Available    EC—Extra Cost  
\*Interim Introduction  
(A) Produced by GM—Buick Motor Division, U.S.A.  
(B) Produced by GM—Chevrolet Motor Division, U.S.A. and GM of Canada.

See your Oldsmobile salesperson for fuel consumption estimates for Cutlass Supreme based on Transport Canada approved test methods.

**A WORD ABOUT ENGINES**—Oldsmobiles are equipped with engines produced at facilities operated by GM car groups, subsidiaries or affiliated companies worldwide.

DIMENSIONS: mm (in.)	Coupe	Sedan
Wheelbase	2745 (108.1)	2745 (108.1)
Length (overall)	5080 (200.0)	5090 (200.4)
Width (overall)	1819 ( 71.6)	1826 ( 71.9)
Height (loaded)	1394 ( 54.9)	1419 ( 55.9)
Head Room—Front	963 ( 37.9)	983 ( 38.7)
Head Room—Rear	968 ( 38.1)	960 ( 37.8)
Leg Room—Front	1087 ( 42.8)	1087 ( 42.8)
Leg Room—Rear	925 ( 36.4)	940 ( 37.0)
Usable Trunk Capacity: litres (cu. ft.)	458 ( 16.2)	430 ( 15.2)
Fuel Tank Capacity: litres (gals.)	68 ( 15.0)	68 ( 15.0)

Lower Body Side Mouldings  
■ 55/45 Divided Bench Seat with Individual Controls

- Convenience Group with Lamps, Visor Vanity Mirror and Chime Tones
- Specific Brougham Ornamentation.

## CUTLASS SALON

### Additional Standard Equipment

- Sport Console with Floor Shifter
- Contour Reclining Front Bucket Seats
- Instrument Panel Rallye Gauges
- Leather-Wrapped Steering Wheel
- Special Steering Gear Ratio
- Larger Diameter Front Stabilizer Bar and Rear Stabilizer Bar
- Belt Reveal Mouldings
- Wide Lower Body Mouldings
- Sport Styled Outside Colour-Coordinated Rearview Mirrors
- Body Side Accent Stripe
- Super Stock Wheels Colour Matched to Body with Stainless Steel Trim Ring
- Amber Parking Lamps.

## SAFETY FEATURES

### Occupant Protection

- Manual lap/shoulder belts for driver and right front passenger (driver side includes visual and

- audible warning system)
- Manual lap belts at each rear seat position, (and centre front, when applicable)
- Energy absorbing steering column
- Energy absorbing instrument panel
- Energy absorbing front seat, back tops
- Laminated safety glass windshield and tempered safety side and rear window glass
- Safety interlocking door latches
- Passenger-guard inside door lock handles
- Inertia-locking, folding front seat backs
- Safety armrests
- Head restraints, driver and right front passenger (adjustable).

### Accident Avoidance

- Side marker lights and reflectors
- Parking lamps that illuminate with headlamps
- Four-way hazard warning flasher
- Backup lights
- Centre high-mounted stop lamp
- Directional signal control and lane change feature
- Windshield defroster, washer and dual-speed wipers
- Inside rearview mirror with vinyl-bonded glass
- Dual outside rearview mirrors
- Brake system with dual master cylinder and warning light
- Starter safety switch
- Dual action hood latch system

- Low glare finish on instrument panel top, inside windshield mouldings, wiper arms and blades, and metallic steering wheel surfaces
- Illuminated heater and defroster controls
- Illuminated windshield wiper and washer controls
- Tires with built-in tread-wear indicators.

### Theft Deterrence

- Audible reminder for ignition key removal
- Theft-deterrent steering column lock
- Visible vehicle identification number.

### FOR YOUR PROTECTION\*

1. New Vehicle Limited Warranty—12 months or 20,000 kilometres, whichever comes first.
2. Powertrain Coverage—36 months or 60,000 kilometres, whichever comes first on gasoline engines (\$100 deductible).
3. Owner Assistance Program.
4. Special Policy Adjustment Program.

\*Ask your dealer for details.



5-year unlimited kilometres corrosion perforation warranty. On all 1986 GM passenger cars. Ask your dealer for details.



While there are many service contracts available on the market today, there is only one which gives you an agreement directly with General Motors. It is the one with the GM Protection Plan logo shown above. This logo on all Plan materials assures you that the service contract you are buying is the GM Plan, we believe the finest such program available to GM owners.

The GM Protection Plan provides additional protection during and after the new vehicle limited warranties. Ask your General Motors dealer for details and information about the genuine GM Protection Plan.

## COMMITMENT TO



General Motors recognizes that taking delivery of your new vehicle is a significant event. To ensure that your delivery experience contributes to your overall satisfaction, we have implemented a "Commitment to Excellence" Delivery Procedure.

This procedure includes a thorough new vehicle inspection by both the service technician and salesperson, a full tank of fuel, and a follow-up survey to determine your satisfaction with the delivery experience.

General Motors "Commitment to Excellence" is yet another excellent reason to "Look at GM Today".

## A WORD ABOUT THIS CATALOGUE

The vehicles described in this catalogue incorporate components produced by General Motors of Canada Limited and related companies and suppliers. During manufacturing, different components than initially scheduled may be used.

All illustrations and specifications contained in this catalogue are based on the latest product information at time of publication approval. The right is reserved to make changes at any time, without notice, in prices, colours, materials, equipment, specifications and models, and to discontinue models. Some of the equipment shown or described throughout this catalogue is available at extra cost or can only be ordered in conjunction with the other optional equipment. Some options may not be available when your vehicle is built. Check with your dealer for complete information.

There is a special feel in an



General Motors of Canada Limited  
Oshawa, Ontario