

1986 BUICK



EXTERIOR COLORS



1986 BUICK EXTERIOR COLORS



White Code 11
Available on all models except Skylark, Somerset, Somerset T Type, LeSabre, Electra/Park Avenue and Electra T Type.



Bright Blue* Code 24
Available on Skyhawk and Skyhawk Wagon.



Black Code 41
Available on LeSabre, Electra/Park Avenue and Electra T Type.



Cream Beige Code 54
Available on Skyhawk, Skyhawk Wagon, Century, Century Wagon, Regal, Regal T Type, LeSabre and Electra Estate Wagons.



Medium Brown* Code 65
Available on Electra/Park Avenue.



Dark Red* Code 79
Available on Skyhawk, Skyhawk Wagon, Century, Century Wagon, Regal, Regal T Type, LeSabre and Electra Estate Wagons.



Silver* Code 12
Available on all models except Skylark, Somerset, Somerset T Type, LeSabre, Electra/Park Avenue and Electra T Type.



Light Blue* Code 25
Available on Skyhawk, Skyhawk Wagon, Century, Century Wagon, Regal, Regal T Type, LeSabre and Electra Estate Wagons.



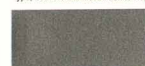
Light Sage* Code 42
Available on Somerset and Skylark.



Light Brown* Code 58
Available on Skyhawk, Skyhawk Wagon, Century, Century Wagon, Regal, Regal T Type, LeSabre and Electra Estate Wagons.



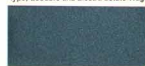
Red Code 70
Available on Skyhawk, Skyhawk T Type and Skyhawk Wagon.



Dark Gray* Code 84
Available on Somerset, Skylark, LeSabre, Electra/Park Avenue and Electra T Type. Accent color on Somerset T Type.



Silver* Code 13
Available on Somerset, Somerset T Type, Skylark, LeSabre, Electra/Park Avenue and Electra T Type.



Medium Blue* Code 27
Available on Somerset and Skylark.



Light Sage* Code 43
Available on Century, Century Wagon, Regal, LeSabre Estate and Electra Estate Wagons.



Light Brown* Code 61
Available on Somerset, Skylark and LeSabre.



Rosewood* Code 71
Available on Century, Century Wagon, Regal, Regal T Type, LeSabre Estate and Electra Estate Wagons.



Blue Firemist* Code 94
Available on Electra/Park Avenue. (Extra cost)



Black* Code 17
Available on Somerset, Somerset T Type and Skylark.



Dark Blue* Code 29
Available on LeSabre and Electra/Park Avenue.



Dark Teal* Code 48
Available on LeSabre and Electra/Park Avenue.



Brown* Code 62
Available on Skyhawk, Skyhawk Wagon, Century, Century Wagon, Regal, Regal T Type, LeSabre and Electra Estate Wagons.



Flame Red* Code 74
Available on Somerset, Somerset T Type, Skylark, LeSabre, Electra/Park Avenue and Electra T Type.



Dark Brown Firemist* Code 96
Available on Electra/Park Avenue. (Extra cost)



Black Code 19
Available on all models except Skylark, Somerset, Somerset T Type, LeSabre, Electra/Park Avenue and Electra T Type.



Dark Blue* Code 31
Available on Skyhawk, Skyhawk Wagon, Century, Century Wagon, Regal, Regal T Type, LeSabre and Electra Estate Wagons.



Dark Sage* Code 49
Available on Somerset and Skylark.



Tan Code 63
Available on LeSabre and Electra/Park Avenue.



Red Firemist* Code 75
Available on Electra/Park Avenue. (Extra cost)



Gray* Code 15
Available on all models except Skylark, Somerset, Somerset T Type, Century T Type, LeSabre, Electra/Park Avenue and Electra T Type. Available accent color on Skyhawk T Type, Century T Type and Regal T Type.



Light Blue* Code 22
Available on Somerset, Skylark, LeSabre and Electra/Park Avenue.



White Code 40
Available on Somerset, Somerset T Type, Skylark, LeSabre, Electra/Park Avenue and Electra T Type.



Tan Code 52
Available on Somerset and Skylark.



Brown* Code 64
Available on Somerset, Skylark and LeSabre.



Dark Red* Code 78
Available on LeSabre.



*Metallic Paint

COLOR AVAILABILITY

Color	Code	Skyhawk, Skyhawk Wagon	Skyhawk T Type	Somerset	Somerset T Type	Skylark	Century, Century Wagon	Century T Type	Regal	Regal T Type	LeSabre	Electra/Park Avenue	Electra T Type	LeSabre Estate and Electra Estate Wagons
White	11	•	•				•	•	•	•				•
Silver*	12	•	•				•	•	•	•				•
Silver*	13			•	•	•					•	•	•	
Gray*	15	•	•				•	•	•	•				•
Black*	17			•	•	•								
Black	19	•	•				•	•	•	•				•
Light Blue*	22					•					•	•		
Bright Blue*	24	•												
Light Blue*	25	•					•	•	•	•				•
Medium Blue*	27			•		•								
Dark Blue*	29								•	•				
Dark Blue*	31	•					•	•	•	•				•
White	40			•	•	•					•	•	•	
Black	41										•	•	•	
Light Sage*	42			•		•								
Light Sage*	43						•	•						•
Dark Teal*	48										•	•		
Dark Sage*	49			•		•								
Tan	52			•		•								
Cream Beige	54	•					•	•	•	•				•
Light Brown*	58	•					•	•	•	•				•
Light Brown*	61			•		•								
Brown*	62	•					•	•	•	•				•
Tan	63										•	•		
Brown*	64			•		•								
Medium Brown*	65										•			
Red	70	•	•											
Rosewood*	71						•	•	•	•				•
Flame Red*	74			•	•	•					•	•	•	
Red Firemist*	75											•		
Dark Red*	78										•			
Dark Red*	79	•					•	•	•	•				•
Dark Gray*	84			•		•					•	•		
Blue Firemist*	94											•		
Dark Brown Firemist*	96											•		

VINYL TOPS



White Code 11



Dark Gray Code 54



Black Code 19



Dark Blue Code 31



Light Sage Code 43
Not available on LeSabre or Electra/Park Avenue



Tan Code 58
Not available on Electra/Park Avenue



Beige Code 63
Available on Electra/Park Avenue



Dark Red Code 79
Not available on LeSabre or Electra/Park Avenue



Dark Red Code 75
Available on Electra/Park Avenue



Red Code 74
Available on Electra/Park Avenue



Red Code 78
Available on LeSabre



Dark Teal Code 48
Available on LeSabre and Electra/Park Avenue

Available at extra cost on Century, Regal, LeSabre Sedan and Electra/Park Avenue except T Type models.



Skyhawk Limited
Blue Cloth
Reclining Front
Bucket Seats



Somerset Limited
Red Sierra-Grain
Leather Reclining
Front Bucket Seats
(Extra Cost)



Regal Limited
Dark Red
Cloth 55/45
Notchback Seats



Park Avenue
Black Cherry
Sierra-Grain
Leather 55/45
Notchback Seats
(Extra Cost)



Electra Estate
Wagon
Dark Red
Cloth 55/45
Notchback Seats



Skylark Limited
Sage Cloth
Reclining Front
Bucket Seats



Century Limited
Blue Cloth
45/45 Seats
(Extra Cost)



LeSabre Limited
Blue Cloth
55/45 Notchback
Seats



LeSabre Estate
Wagon
Blue Cloth
55/45 Notchback
Seats (Extra Cost)

Buick Motor Division, General Motors Corporation, reserves the right to make changes at any time, without notice, in prices, colors, materials, equipment, specifications, and models; and also to discontinue models.

Let's get it together . . . Buckle up



Wouldn't you
really rather have a Buick?