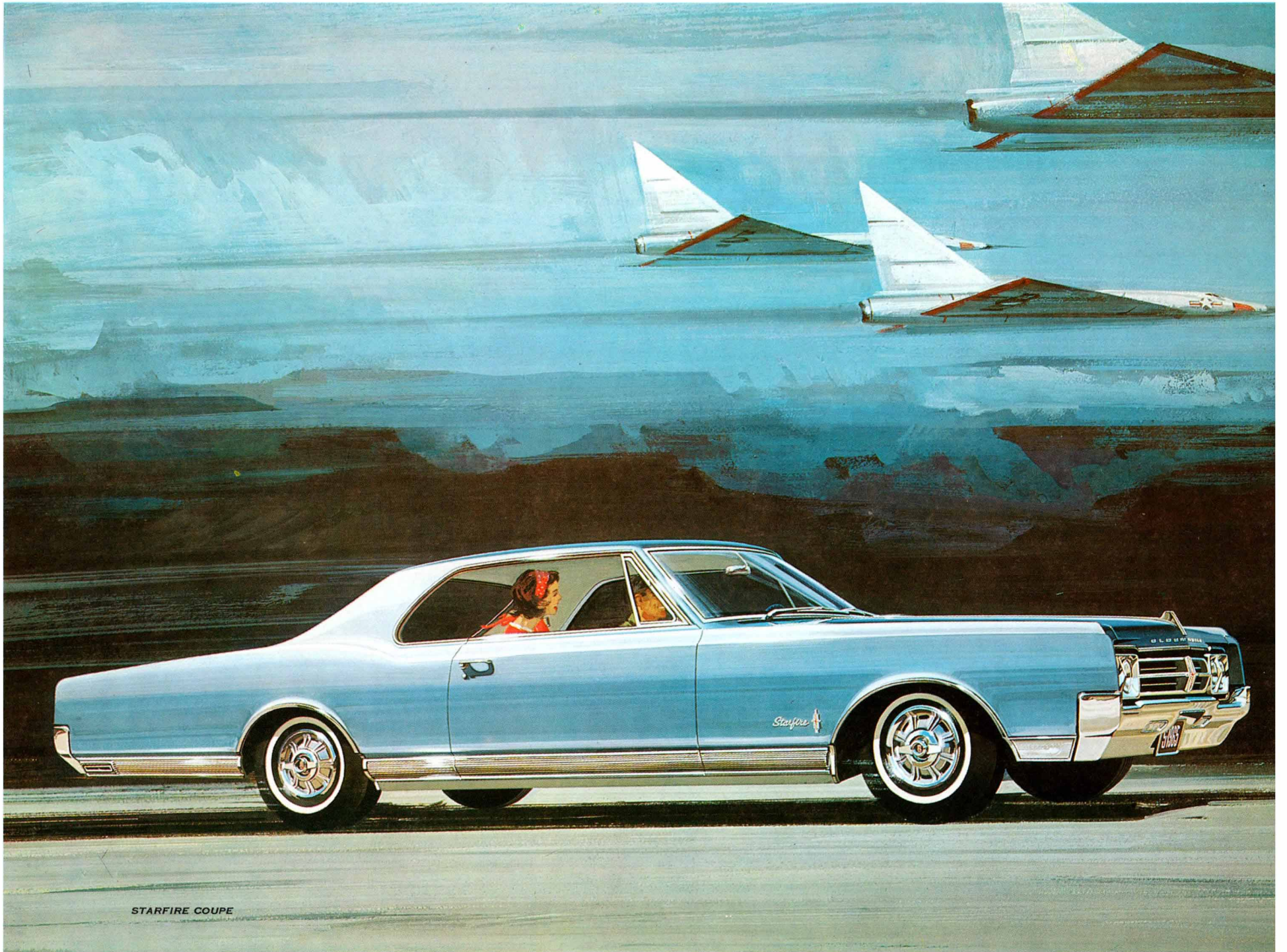




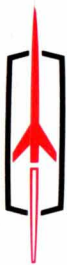
The Rocket Action Cars!

'65 OLDSMOBILE SPORTS MODELS





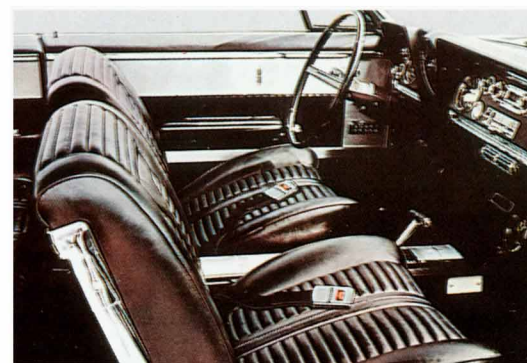
STARFIRE COUPE



STARFIRE *Flagship of Oldsmobile's sports car fleet!*

Here's the car that makes luxury a sporting proposition! *Starfire*—stylish performer with a look of action all its own! *Starfire*—flashing performer with a potent new 425-cubic-inch V-8 and new T-stick Turbo Hydra-Matic! *Starfire*—sporty performer with control console, tach, leather-appointed bucket seats! *Starfire*—a delight to drive, a pleasure to own—in every way *your* kind of car!

STANDARD EQUIPMENT: Starfire V-8. Turbo Hydra-Matic or 4-on-the-floor. Power steering and brakes. Bucket seats. Control console. Padded instrument panel. Electric clock. Wheel discs. Windshield washers. Deluxe steering wheel. Included on Starfire Convertible are power windows and seat, whitewall tires, outside mirror.



Here's Starfire's command post. Leather-trimmed buckets flank a sporty control console with tachometer and T-stick Turbo Hydra-Matic. Nylon carpeting is color-keyed to match the interior.

Functional side exhausts, distinctive square taillights, satin-chrome panel give Starfire a look all its own.



STARFIRE CONVERTIBLE

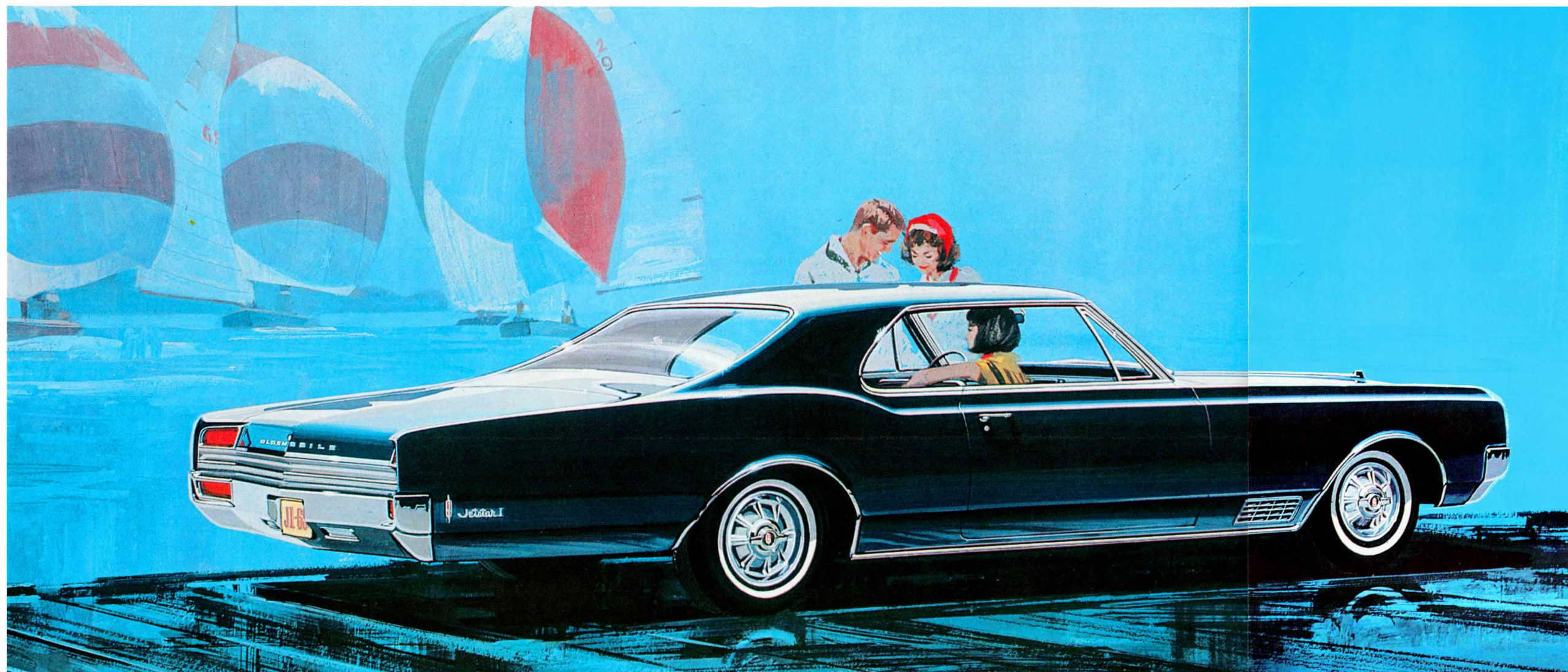
Olds offers, at modest extra cost, a variety of options and accessories, many of which are shown in the car illustrations and described on the back cover.



Starfire power! All-new 425-cubic-inch V-8 makes Starfire a real goer! Ultra-high 10.5-to-1 compression ratio, four-barrel carburetor, special cam, delivers 370 horsepower and 470 lb.-ft. of torque.



JETSTAR I Has everything going for you... including an easy-going price!

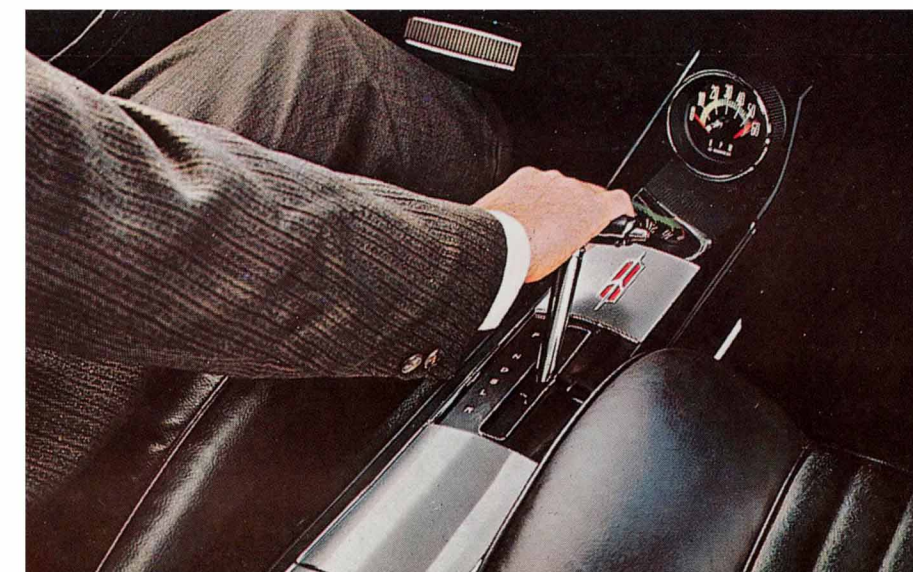


JETSTAR I SPORTS COUPE

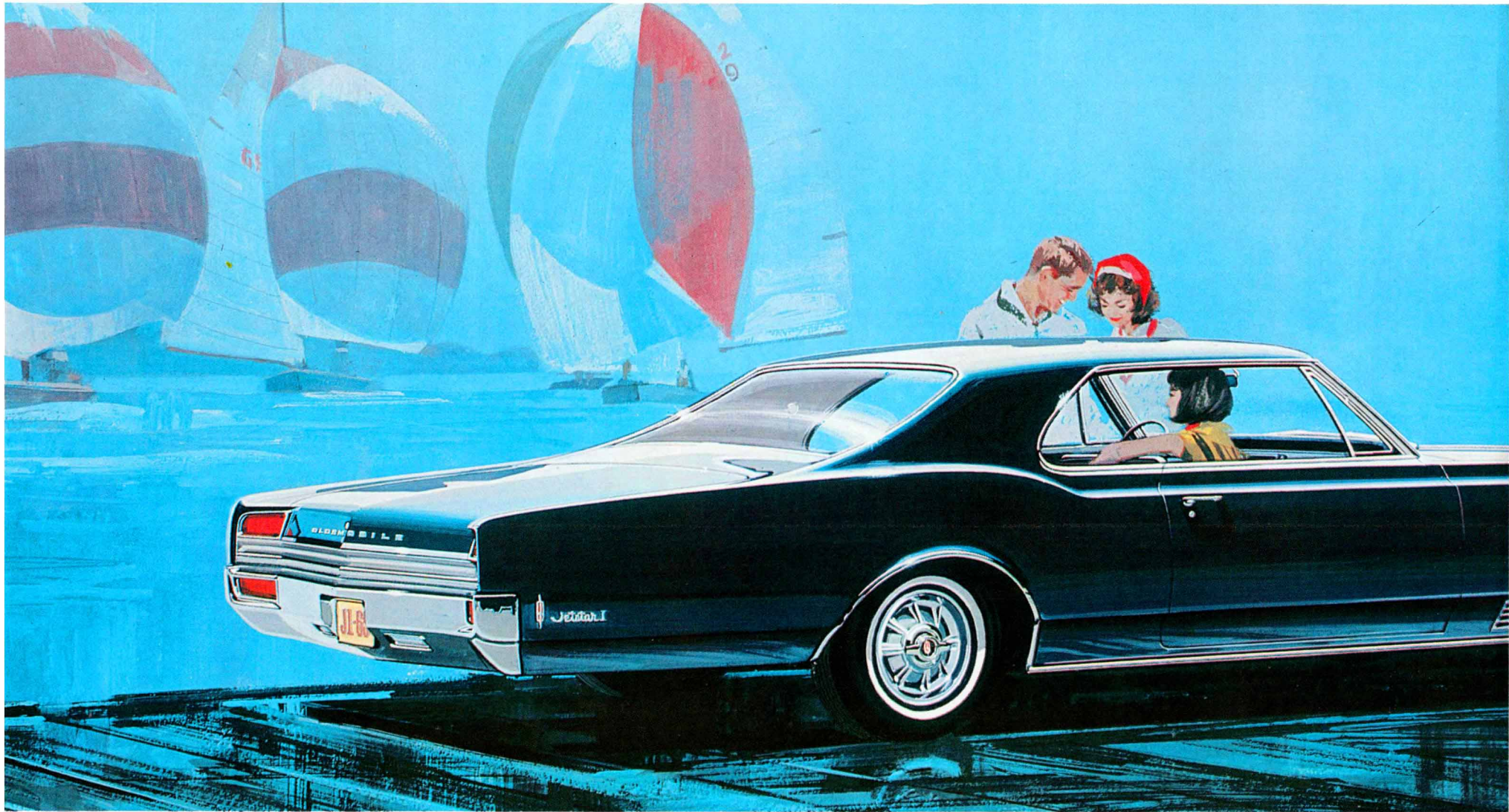
Wow is the word for Jetstar I, Oldsmobile's lowest-priced, full-size sports model! *Whoosh* is the word for its 370-h.p. Starfire V-8 action! *Swish* is the word for its bucket-seated, console-appointed interior! *Smooth* is the word for its four-coil roadability! And *cool* is the word for its rakish, look-alive look! Why not try it on for price? *Now* is the word for Jetstar I.

STANDARD EQUIPMENT: Starfire V-8 Engine. Three-speed synchromesh transmission. Dual exhausts. Bucket seats. Sports console. Carpeting. Wheel discs. Safety-padded instrument panel. Deluxe steering wheel. Electric clock. Two-speed electric windshield wipers. 8.25 x 14-inch tires.

Olds offers, at modest extra cost, a variety of options and accessories, many of which are shown in the car illustrations and described on the back cover.



Custom-contoured, foam-padded bucket seats are Moroccan-tailored in any of five dramatic colors. Handsome center control console features a tachometer if equipped with Turbo Hydra-Matic Drive, performance gauge if equipped with a manual transmission.



JETSTAR I SPORTS COUPE

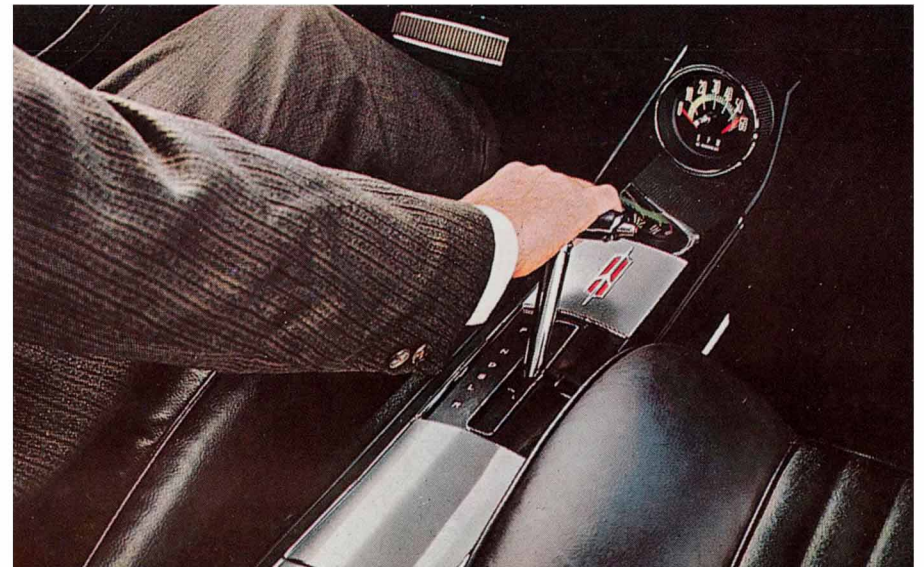
***JETSTAR I** Has everything going for you . . . including an easy-going price!*



Wow is the word for Jetstar I, Oldsmobile's lowest-priced, full-size sports model! *Whoosh* is the word for its 370-h.p. Starfire V-8 action! *Swish* is the word for its bucket-seated, console-appointed interior! *Smooth* is the word for its four-coil roadability! And *cool* is the word for its rakish, look-alive look! Why not try it on for price? *Now* is the word for Jetstar I.

STANDARD EQUIPMENT: Starfire V-8 Engine. Three-speed synchromesh transmission. Dual exhausts. Bucket seats. Sports console. Carpeting. Wheel discs. Safety-padded instrument panel. Deluxe steering wheel. Electric clock. Two-speed electric windshield wipers. 8.25 x 14-inch tires.

Olds offers, at modest extra cost, a variety of options and accessories, many of which are shown in the car illustrations and described on the back cover.



Custom-contoured, foam-padded bucket seats are Moroccan-tailored in any of five dramatic colors. Handsome center control console features a tachometer if equipped with Turbo Hydra-Matic Drive, performance gauge if equipped with a manual transmission.

Winning combination to an exciting new world of action... **OLDSMOBILE**

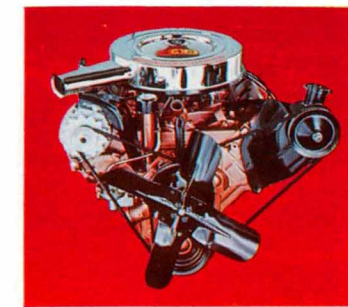
4 4 2



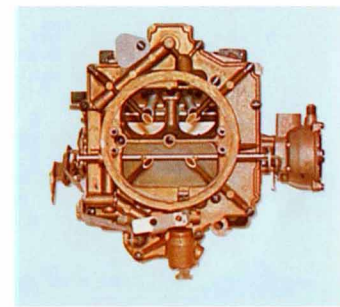
4-4-2 HOLIDAY COUPE

400-cubic-inch V-8, four-barrel carburetor, dual exhausts, track-tested red-line tires, special heavy-duty chassis components—all in one Olds package!

No wonder it's a hot number! Just look at its arithmetic! 400 cubes of V-8 engine! 345 horses. 440 lb.-ft. of torque. 10.25-to-1 compression. Four-barrel carb. Twin pipes. And 3.55-to-1 rear-axle ratio. Add a heavy-duty suspension with high-rate springs and shocks. Heavy stabilizer bars, front and rear. A set of track-tested red-line shoes. Plus a three-speed synchromesh gear box. (Extra-cost options: Jetaway automatic, or four-on-the-floor for the purists!) Sum total: 4-4-2—just the number you've been waiting for! And it's yours on any F-85 V-8 coupe or convertible!



Spirited 400-cubic-inch V-8!



Four-barrel carb—standard!



Under that stylish rear end—twin aluminized exhaust pipes!

Olds offers, at modest extra cost, a variety of options and accessories, many of which are shown in the car illustrations and described on the back cover.

Winning combination to an exciting n



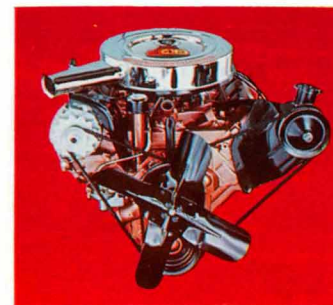
4-4-2 HOLIDAY COUPE

ew world of action . . . OLDSMOBILE

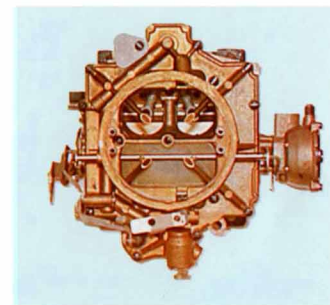


400-cubic-inch V-8, four-barrel carburetor, dual exhausts, track-tested red-line tires, special heavy-duty chassis components—all in one Olds package!

No wonder it's a hot number! Just look at its arithmetic! 400 cubes of V-8 engine! 345 horses. 440 lb.-ft. of torque. 10.25-to-1 compression. Four-barrel carb. Twin pipes. And 3.55-to-1 rear-axle ratio. Add a heavy-duty suspension with high-rate springs and shocks. Heavy stabilizer bars, front and rear. A set of track-tested red-line shoes. Plus a three-speed synchromesh gear box. (Extra-cost options: Jetaway automatic, or four-on-the-floor for the purists!) Sum total: 4-4-2—just the number you've been waiting for! And it's yours on any F-85 V-8 coupe or convertible!



Spirited 400-cubic-inch V-8!



Four-barrel carb—standard!



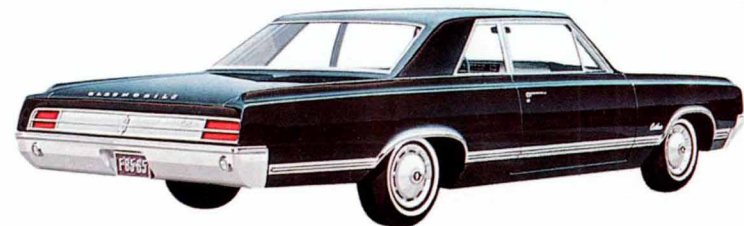
Under that stylish rear end—twin aluminized exhaust pipes!

Olds offers, at modest extra cost, a variety of options and accessories, many of which are shown in the car illustrations and described on the back cover.

F-85 CUTLASS

Three spirited ways to go . . . where the action is!

This could be the nicest thing that happens to you all year—a new Olds Cutlass! Easy-parking 204.3-inch length. Smooth-riding 115-inch wheelbase! Smart-looking foam-padded bucket seats. Road-commanding 315-h.p. V-8 engine. And a money-saving price, to boot! Try a fashionable F-85 Cutlass—in any of three spirited versions. It's a real sporting event!



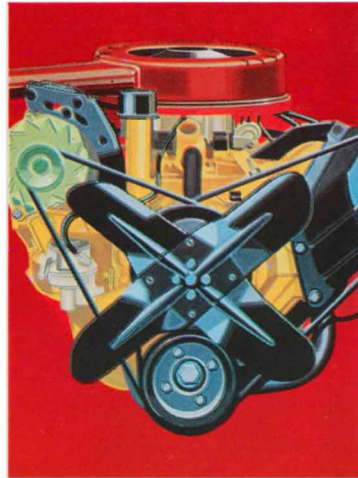


Cutlass gives you more of what you want! Like bucket seat comfort—foam padded and covered in smart Moroccan. Like carpeted luxury—deep piled and color coordinated. Like V-8 performance—four barrels, 315 horsepower, 10.25-to-1 compression, 360 lb.-ft. of torque. Like coil-spring stability—front and rear. Like a host of sporty extra-cost options—control console with tach, Jetaway automatic transmission or stick-shift four-on-the-floor. That's a Cutlass for you—like nothing else at the price!

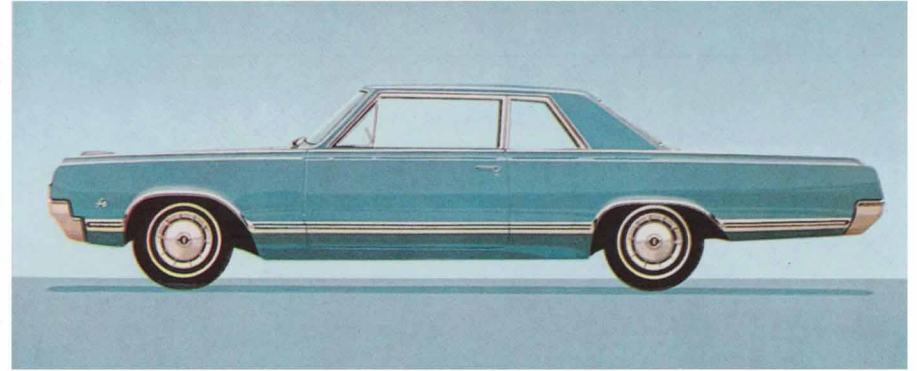
Olds offers, at modest extra cost, a variety of options and accessories, many of which are shown in the car illustrations and described on the back cover.



Sporty all-Moroccan bucket seat comfort on the inside!



315-hp. Cutlass V-8 mill up front!



F-85 V-6 SPORTS COUPE

*Oldsmobile's lowest-priced sports model...
happiest thing that ever happened to a budget!*

How much glamor can you pack into a truly low-priced sports model? The answer's easy: F-85 V-6 Sports Coupe! Just add 'em up! Moroccan bucket seats. Safety-padded instrument panel. Deluxe steering wheel. Front seat belts. Carpeting. Chrome trim mouldings. All this plus a penny-wise V-6 that costs less to start with, and keeps right on saving!



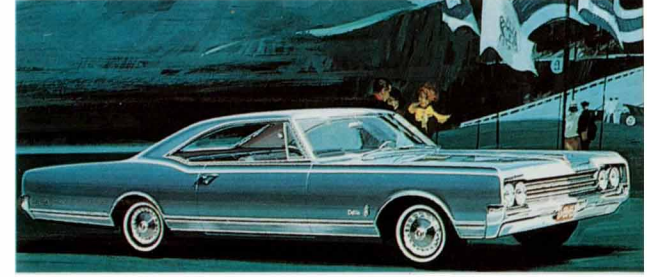
HOLIDAY SPORTS SEDAN

Ninety-Eight



COUPE

Starfire



DELTA HOLIDAY COUPE

Dynamic 88



LUXURY SEDAN



CONVERTIBLE



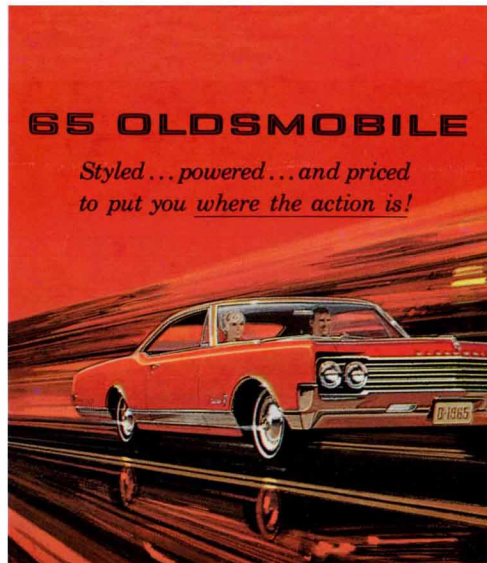
DELTA HOLIDAY SEDAN



HOLIDAY SPORTS COUPE



DELTA CELEBRITY SEDAN



65 OLDSMOBILE

Styled... powered... and priced to put you where the action is!



CONVERTIBLE



TOWN SEDAN



HOLIDAY COUPE



CONVERTIBLE



HOLIDAY SEDAN



CELEBRITY SEDAN

Olds offers, at modest extra cost, a variety of options and accessories, many of which are shown in the car illustrations and described on the back cover.



SPORTS COUPE

Jetstar I



CUTLASS HOLIDAY COUPE

F-85



3-SEAT CUSTOM VISTA-CRUISER

Station Wagons



HOLIDAY SEDAN

Jetstar 88



CUTLASS SPORTS COUPE



CUTLASS CONVERTIBLE



2-SEAT CUSTOM VISTA-CRUISER



V-6 SPORTS COUPE



3-SEAT VISTA-CRUISER



HOLIDAY COUPE



DELUXE FOUR-DOOR SEDAN



2-SEAT VISTA-CRUISER



CONVERTIBLE



FOUR-DOOR SEDAN



F-85 DELUXE STATION WAGON



CELEBRITY SEDAN



CLUB COUPE



F-85 STATION WAGON

1965 OLDSMOBILE SPORTS MODELS

PERFORMANCE DATA



STARFIRE *Coupe Convertible*

Wheelbase.....	123.0"
Overall Length.....	216.9"
Overall Width.....	80.0"
Overall Height.....	54.1"
Tread—Front.....	62.5"
Rear.....	63.0"
Axle Ratio.....	3.23-to-1

ENGINE

Horsepower @ rpm.....	370/4800
Torque @ rpm.....	470/3200
Displacement, cu. in.....	425
Comp. ratio.....	10.5-to-1
Fuel required.....	Premium
Carburetor.....	4-Barrel

Frame, Guard-Beam • Transmission, T-stick Turbo Hydra-Matic or 4-Speed Synchronesh optional at no extra cost • Self-adjusting Power Brakes—208.6-sq.-in. lining area • Power Steering • 43.6' Turning Diameter • Chambered Dual Exhaust • 4-Coil Suspension with Twin-Triangle Stability • 73-Amp.-Hr. Battery • Tire Size 8.25 x 14" (Coupe), 8.55 x 14" White Sidewall (Convertible). Fuel tank, 25 gallons.

JETSTAR I *Sports Coupe*

Wheelbase.....	123.0"
Overall Length.....	216.9"
Overall Width.....	80.0"
Overall Height.....	54.1"
Tread—Front.....	62.5"
Rear.....	63.0"
Axle Ratio.....	3.23-to-1

ENGINE

Horsepower @ rpm.....	370/4800
Torque @ rpm.....	470/3200
Displacement, cu. in.....	425
Comp. ratio.....	10.5-to-1
Fuel required.....	Premium
Carburetor.....	4-Barrel

Frame, Guard-Beam • Transmission, 3-Speed Synchronesh; T-stick Turbo Hydra-Matic or 4-Speed Synchronesh optional at extra cost • Self-adjusting Brakes—208.6-sq.-in. lining area • 43.6' Turning Diameter • Dual Exhaust • 4-Coil Suspension with Twin-Triangle Stability • 70-Amp.-Hr. Battery • Tire Size 8.25 x 14" • Fuel tank capacity, 25 gallons.

F-85 *Cutlass Holiday Coupe Cutlass Sports Coupe Cutlass Convertible V-6 Sports Coupe*

Wheelbase.....	115.0"
Overall Length.....	204.3"
Overall Width.....	73.8"
Overall Height.....	53.7"
Tread—Front.....	58.0"
Rear.....	58.0"
Axle Ratio.....	3.23-to-1

ENGINE 4-4-2* Cutlass V-6

Horsepower			
@ rpm.....	345/4800	315/5200	155/4400
Torque @ rpm.....	440/3200	360/3600	225/2400
Displ. cu. in....	400	330	225
Comp. ratio....	10.25:1	10.25:1	9.0:1
Fuel required.....	Premium	Premium	Regular
Carburetor....	4-Barrel	4-Barrel	1-Barrel

Frame, Guard-Beam • Transmission, 3-Speed Synchronesh standard; 4-Speed Synchronesh or Jetaway optional at extra cost • Self-adjusting Brakes—155.8-sq.-in. lining area • 41.0' Turning Diameter • 4-Coil Suspension with Twin-Triangle Stability • 61-Amp.-Hr. Battery • Tire Size 7.35 x 14" (Cutlass), 6.95 x 14" (V-6 Sports Coupe). 4-4-2 rear axle ratio, 3.55-to-1. *4-4-2 OPTIONAL AT EXTRA COST ON ANY F-85 V-6 COUPE OR CONVERTIBLE.

Extra-Cost Options and Accessories

Tilt-Away Steering Wheel • Power Steering • Power Brakes • Power Windows • Power Ventipanes* • Power Seat • Four-Season Air Conditioning • Sports-type Wheel Discs • Custom Sports Steering Wheel • Guide-Matic Power Head Lamp Control* • Electric Clock • Anti-Spin Differential • Windshield Washers • Deluxe Pushbutton Radio • Super Deluxe Signal Seeker Radio* • Rear Seat Speaker • Reverbatone Speaker* • AM-FM Radio* • Deck Lid Power Lock Release • 15-inch wheels • Tinted Glass • Rear Window Defroster* (except Convertibles) • Center Control Console optional on Cutlass models and V-6 Sports Coupe.

*NOT AVAILABLE ON F-85

ACCESSORIES AND POWER FEATURES DESCRIBED OR ILLUSTRATED IN THIS CATALOG ARE OPTIONAL AT EXTRA COST UNLESS OTHERWISE SPECIFIED. A PARTIAL LIST OF ACCESSORIES APPEARS ABOVE. A FULL PRICE LIST FOR ALL MODELS AND OPTIONS IS AVAILABLE AT ANY LOCAL AUTHORIZED OLDSMOBILE QUALITY DEALER'S.

OLDSMOBILE RESERVES THE RIGHT TO MAKE CHANGES AT ANY TIME, WITHOUT NOTICE, IN PRICES, COLORS, MATERIALS, EQUIPMENT, SPECIFICATIONS AND MODELS, AND ALSO TO DISCONTINUE MODELS. 9-64 LITHO IN U.S.A.