

distinguished craftsmanship

COTNER

BEVINGTON



the story of distinguished craftsmanship

More than three decades of experience in crafting fine quality coaches have brought Cotner-Bevington to the foremost in the fine professional car field. This Cotner-Bevington experience, combined with the built-in economy of Oldsmobile's sturdy, durable construction insures the absolute minimum of maintenance, the absolute maximum of power and long-lasting, trouble-free operation. Cotner-Bevington's integrity of craftsmanship insures interiors as beautiful as they are practical . . . equipment and accessories that are unequaled for durability and ease of operation.

Every sleek, flowing line of these beautifully functional machines reflects the service, efficiency and performance that is yours with Cotner-Bevington. The Cotington enhances your community reputation, professional standing and prestige as only a quality coach can. Solid construction, economy of operation and advanced styling guarantee your proud ownership for years to come. The Cotington—your wisest investment in fine professional cars.



COTNER/BEVINGTON CORPORATION

BLYTHEVILLE, ARKANSAS

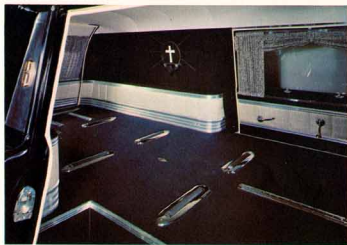
the ultimate achievement in beauty and versatility



THE COTINGTON COMBINATION

Built around Oldsmobile's advanced engineering and styling, the Cotington Combination has become an automotive classic of beauty, economy, versatility and flawless performance . . . an image of prestige and dignity that commands respect. The interior view suggests the speed and ease with which the Combination converts from elegant funeral coach to practical first-call car or efficient ambulance. Cotner-Bevington's insistence on the highest standards of craftsmanship, experience and continuing technological advancements have resulted in a vehicle built for years of economical operation, minimum maintenance and smooth-running, effortless performance.

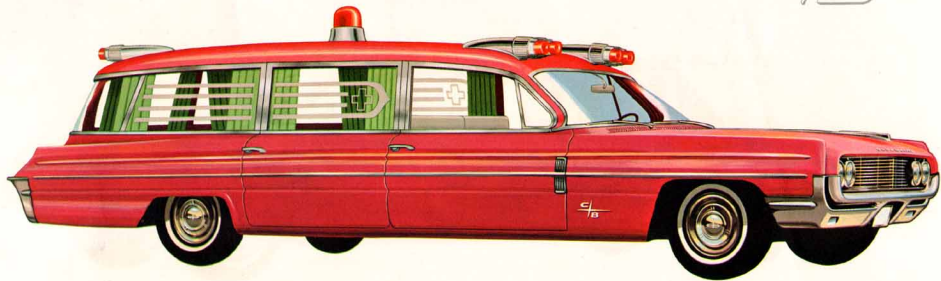
styling elegance through distinguished craftsmanship



THE COTINGTON LANDAU

An image of prestige and dignity that commands respect in every flowing dynamic line, the Cotington Landau reflects your stature and competence to the community. The Cotner-Bevington tradition in fine custom-car building insures the utmost in tough, solid construction and perfect function-plus Oldsmobile engineering. The advanced '62 features insure the ultimate in beauty and strength and smooth, efficient operation. Interiors are elegantly designed and painstakingly crafted. The 1962 Cotington Landau, designed for lasting beauty and flawless performance for years to come, is your ideal emissary . . . your finest investment in quality coaches.

built for emergencies, designed for economy



THE COTINGTON AMBULANCE

The streamlined, flowing profile of the '62 Cotington Ambulance depicts the smooth, efficient service delivered by this big (150-inch wheelbase), finely-tooled machine. Oldsmobile's exclusive Twin-Triangle Stability assures a super-smooth ride under any conditions . . . the big 330 h/p Skyrocket engine means power reserve, effortless performance. A wealth of practical, exclusive features guarantee your patients the fastest, easiest, most efficient care! Scientific planning, precise care and superb craftsmanship make the Cotington Ambulance a combination of tough, economical efficiency and sleek beauty that symbolizes your prestige and competence!

designed for authority, dignity and prestige

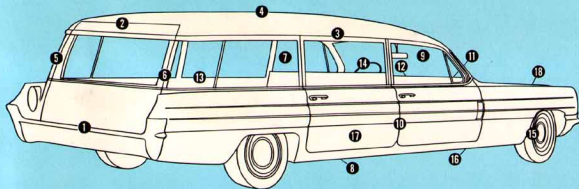


THE COTINGTON LIMOUSINE

It is no coincidence that the 1962 Cotington Limousine bears the unmistakable look of leadership, luxury and true aristocracy among quality professional cars. Cotner-Bevington's formal, sculptured styling combines with inviting deep-seated comfort in a precision-tooled automobile classic. Built around Oldsmobile's time-defying engineering and advanced styling, Cotner-Bevington's demanding insistence on the most exacting standards of meticulous craftsmanship assures years of smooth-running, effortless performance and minimum maintenance. The Cotington Limousine is built with the two essentials of your business firmly in mind—dignity and prestige.

EXCLUSIVE PERFORMANCE-DESIGNED FEATURES

- 1 Convenient low-loading height
- 2 Wide rear door, maximum head clearance
- 3 Anodized aluminum door headers, window moldings—won't rust or tarnish
- 4 Lower over-all height
- 5 Double-seal action rear door weatherstrip
- 6 All door hinges concealed
- 7 Tilted partition glass to eliminate glare
- 8 Dana Corporation Drive Shaft
- 9 Tinted windshield
- 10 All steel and anodized aluminum body, doors and quarter panels
- 11 Two-speed electric windshield wipers
- 12 Windshield washers
- 13 Anodized aluminum interior mouldings
- 14 Power steering
- 15 Power brakes
- 16 Hydramatic transmission
- 17 Extra-wide side doors for easier entry
- 18 Power, reliability, prestige of Oldsmobile



Specifications

GENERAL—Wheelbase 150"; overall length 241"; overall height 66 $\frac{1}{4}$ "; overall width 77"; tire size 9:00 x 14 black; weight 5600 lbs.

ENGINE—High compression 90° V-type; 330 horsepower @ 4600 r.p.m.; bore and stroke: 4-1/8" x 3-11/16"; piston displacement, 394 cu. in.; compression ratio: 10.25-1; 4 barrel multi-jet carburetor.

CHASSIS—Frame: Guard beam design with rugged C section side channels. Heavy duty coil springs at all four wheels. Heavy duty shock absorbers.

Standard Equipment

COMBINATION

Hydramatic Transmission
Power Steering
Power Brakes
Backup Lights
Tinted Windshield
Two-Speed Wipers
Windshield Washers
Padded Dash
Wheel Trim Rings
Deluxe Steering Wheel
Heater and Defroster in Front
Heater in Rear
Draperies on All Rear Windows
Removable Casket Rack
Removable Cot Fastener
Two Attendant Seats
Two Nameplates

FUNERAL COACH

Hydramatic Transmission
Power Steering
Power Brakes
Backup Lights
Tinted Windshield
Two-Speed Wipers
Windshield Washers
Padded Dash
Wheel Trim Rings

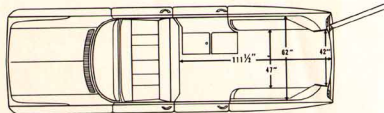
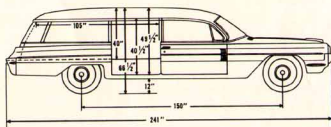
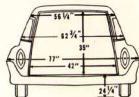
Deluxe Steering Wheel
Heater and Defroster in Front
Draperies on all Rear Windows
Rollers in Floor or Removable
Casket Rack
Two Nameplates

AMBULANCE

Hydramatic Transmission
Power Steering
Power Brakes
Backup Lights
Tinted Windshield
Two-Speed Wipers
Windshield Washers
Padded Dash
Grab Handle on Rear Door and Right Pillar
Wheel Trim Rings
Deluxe Steering Wheel
Heater and Defroster in Front
Heater in Rear
Draperies or Roller Shades
Cot Fastener
Two Nameplates
Two Attendant Seats
Built-In Lights in Front
Marker Lights in Rear
68L Siren
Medicine Cabinet
Ambulance Design on Quarter Glass

LIMOUSINE

Hydramatic Transmission
Power Steering
Power Brakes
Backup Lights
Tinted Glass
Two-Speed Wipers
Windshield Washers
Padded Dash
Wheel Trim Rings
Deluxe Steering Wheel
Heater and Defroster
Extra Fold-down Seats
Factory Air Conditioning Front
Frigiking Air Conditioning Rear
White Wall Tires
Outside Rear View Mirror





COTNER / BEVINGTON CORPORATION

BLYTHEVILLE, ARKANSAS

craftsmen of quality funeral coaches, combinations, ambulances, limousines

COTNER

BEVINGTON



POSTAGE DUE 4 CENTS

COTNER-BEVINGTON CORPORATION · BLYTHEVILLE, ARKANSAS

FIRST-CLASS MAIL

Mr. Joseph W. Gaskill
Box 86
Mount Rainier, Md.

COTNER

BEVINGTON

CORPORATION

TELEPHONE PDPLAR 3-8141 · BLYTHEVILLE ARKANSAS

December 8, 1961

Mr. Joseph W. Gaskill
Box 86
Mount Rainier, Md.

Dear Sir:

Thank you very much for your recent letter concerning our Oldsmobile limousine.

We are producers of funeral coaches and ambulances, as you can tell by our literature. The limousine was originally intended for use by funeral directors. However, we believe there are others, such as yourself who would have a use for such a vehicle.

Our dealer in your area is A. Geissel & Sons. We are sure they would be pleased to talk with you at your convenience.

We appreciate your interest and hope to be of further service to you.

Very truly yours,
COTNER/BEVINGTON CORP.


D. J. Cotner.

DJC/cc

CC: A. Geissel & Sons
485 N. 3rd
Philadelphia, Pa.



Builders of Funeral Coaches and Ambulances

A. GEISSEL & SONS

ESTABLISHED 1863

HEARSES, AMBULANCES

485-87-89 NORTH THIRD STREET

DISTRIBUTORS OF
THE EUREKA COMPANY

PHILADELPHIA 23, PA. December 11th, 1961

Mr. Joseph W. Gaskill
Box 86
Mount Rainier,
Maryland.

Dear Mr. Gaskill:-

We have just received a copy of a letter that was sent to you from the Cotner / Bevington Corp. informing us that you might be interested in a 1962 Oldsmobile Limousine.

Enclosed please find a drawing of the 1962 Oldsmobile Limousine and also a dimension sheet for the same unit. I have seen one of these limousines in a convention at Minneapolis, Minn., and I was quite impressed with the unit and also with the low price.

The 1962 Oldsmobile Limousine would include the following equipment and would be delivered to you in Mount Rainier, Maryland at no extra charge.

Oldsmobile Hydromatic Transmission
Power Steering and Power Brakes
Back Up Lights
Tinted Glass throughout the entire car.
Two Speed Electric Windshield Wipers.
Windshield Washers.
Padded Dash
Deluxe Wheel Trim Rings of Chrome.
Deluxe Steering Wheel.
Heater and Defroster.
2 Extra Fold-a-floor Seats.
Air Conditioning throughout the entire unit. (2 separate units)
White Wall Tires your choice of three. 9:00 X 14
Outside Rear View Mirror on drivers side.
Assist Straps (2)
Freight and Delivery
All for the sum of -----\$8,800.00

From this above emntioned price there would be an allowance for your present car or if you nothing to trade there would be an allowance for Cash No Trade.

A. GEISSEL & SONS

ESTABLISHED 1865

HEARSE, AMBULANCES

485-87-89 NORTH THIRD STREET

DISTRIBUTORS OF
THE EUREKA COMPANY

PHILADELPHIA 23, PA. December 11th, 1961

Mr. Joseph Gaskill

This unit would be protected by your local Oldmobile dealer for 12,000 miles or 1 year which ever would come first.

If you have an further questions about this unit, or if you would like further information and pictures and prices, please contact us at once, and I would be very happy to make an appointment with you and talk over this unit with you .

Thanking you for what consideration you may give to our product and hoping that we may be favored with your future business, we are,

Very truly yours,
A. GEISSEL & SONS


C. W. Geissel Jr.

COTNER

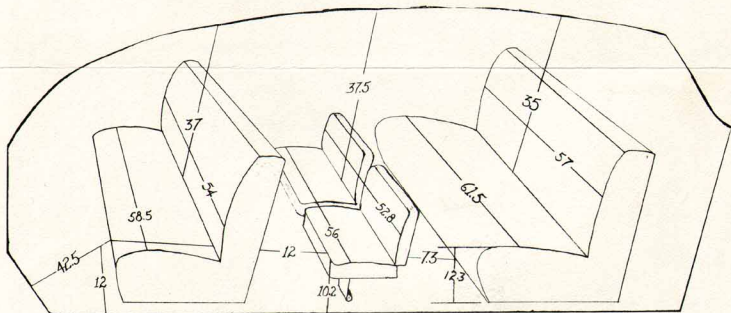
BEVINGTON

CORPORATION

TELEPHONE POPLAR 3-8141 · BLYTHEVILLE ARKANSAS

~~1961~~ OLDSMOBILE LIMOUSINE

1962.



INTERIOR DIMENSIONS

	FRONT	AUX.	REAR
HEAD ROOM	37.0	37.5	35.0
SHOULDER ROOM	54.0	52.8	57.0
HIP ROOM	58.5	56.0	61.5
LEG ROOM	42.5	12.0	7.3
SEAT HEIGHT	12.0	10.2	12.3

STANDARD EQUIPMENT

AIR CLEANER, DRY PACK	OIL FILTER
AIR CONDITIONING, FRONT & REAR	OUTSIDE MIRROR, LEFT SIDE
ASSIST STRAPS (TWO)	POWER BRAKES
CIGARETTE LIGHTER, FRONT	POWER STEERING
HYDRAMATIC TRANSMISSION	STEERING WHEEL, DELUXE
INSTRUMENT PANEL-PADDED	TINTED GLASS
LIGHT, FRONT ASH RECEIVER	TIRES, 9:00 x 14 WHITE
LIGHTS, BACK-UP	VISORS, DUAL SUN
LIGHTS, COURTESY	WASHERS, WINDSHIELD
LIGHTS, DIRECTIONAL	WHEEL TRIM RINGS



The Cotner/Bevington nine passenger Oldsmobile limousine is most conservative and traditional in design. The classic lines of this car, combined with its superb performance and handling ease, make it a car you will be proud to own and drive.



Luxurious wool broadcloth, soft and supple leather-like vinyl, and deep pile carpeting are blended with meticulous care to make the interior of the limousine truly distinctive.

COTNER / BEVINGTON CORP
BLYTHEVILLE, ARK.