

*Introducing the New*

1946 OLDSMOBILE

McCARROLL'S  
OLDSMOBILE  
Direct Factory Dealer  
7000 EUCLID AVE.  
HENDERSON 8181



McCARROLL'S  
OLDSMOBILE  
Direct Factory Dealer  
7000 EUCLID AVE.  
HENDERSON 8181

WITH THE NEW



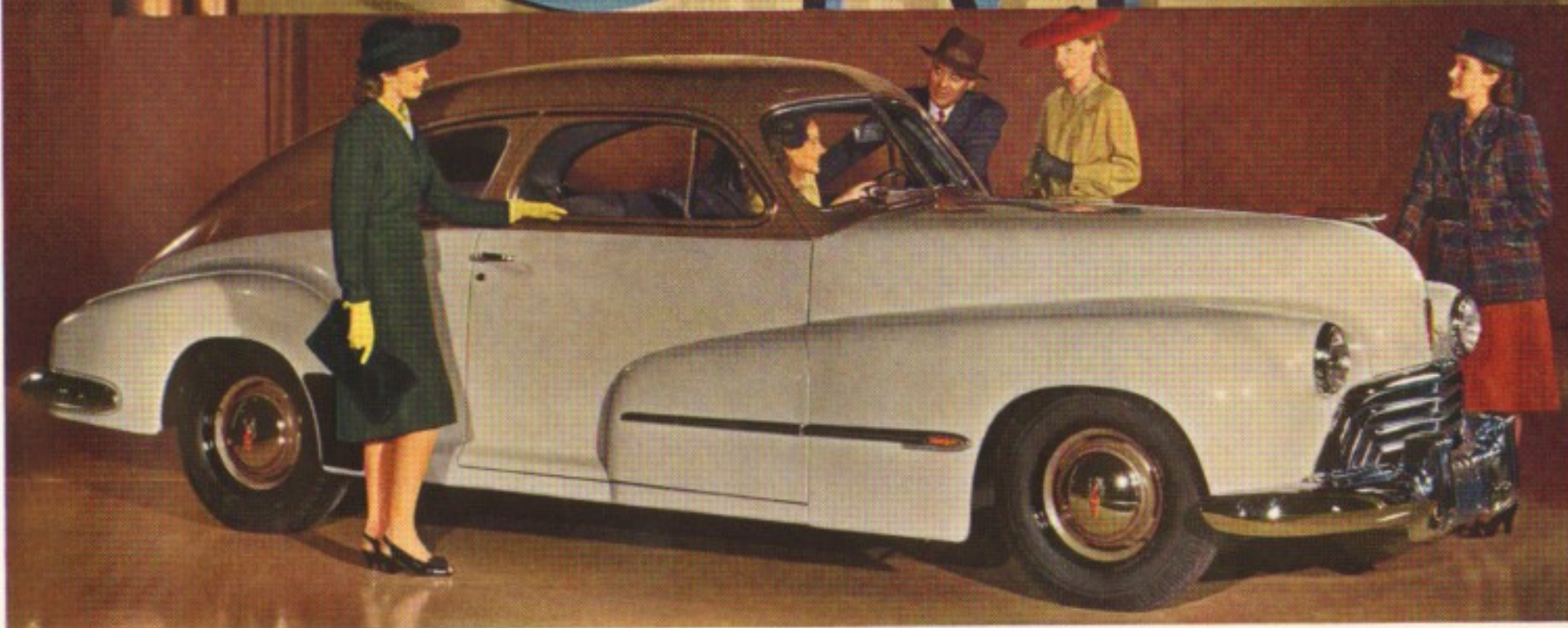
HYDRA-MATIC DRIVE



**OLDSMOBILE** **76**  
**CLUB SEDAN**

NEW is the word for the 1946 Oldsmobile. It's new in appearance, new in performance, new in appointments. And it offers many new features that mean longer life and greater reliability—such as new electro-hardened aluminum alloy pistons, new connecting rods designed for greater strength, and new Durex heavy-duty bearings. The 76 Club Sedan, illustrated above, is a *big* car, with plenty of relaxing room for six passengers. And it gives you the economy of Oldsmobile's 100 H.P. 6-cylinder "Fire-Power" Engine.

# GM



**OLDSMOBILE** **78**  
**CLUB SEDAN**

The same distinctive styling as in the "76", plus the extra performance and extra smoothness of a 110 H.P. 8-cylinder Engine—that's the new Oldsmobile 78 Club Sedan. And it gives you all of the famous, time-proved Oldsmobile advantages, such as Knee-Action Wheels, Quadri-Coil Springing, Dual Center-Control Steering and Unisteel Body by Fisher. Both the "76" and "78" are available in either Standard or De Luxe models. Both offer . . . optional at extra cost . . . the new and finer GM Hydra-Matic Drive.



## GENERAL MOTORS' NEW HYDRA-MATIC DRIVE

One of the first things you notice about the new 1946 Oldsmobile with the new Hydra-Matic Drive is that there is no *clutch pedal in the car*. There's no clutch-pushing at all. There's just no need for any, because *all gear-shifting is automatic through all four forward speeds*. To go, you step on the accelerator. To stop, you step on the brake. Except for steering, *that's all you do!* Yet Hydra-Matic Drive gives you quicker pick-up and greater flexi-



bility than anything you've ever known. Hydra-Matic Drive was introduced by Oldsmobile in 1939. It has been *proved* through billions of miles of driving. And now, the *new* Hydra-Matic Drive has been *improved*, as a result of wartime use on tanks, to give you even finer performance, even greater safety, even better economy. The new GM Hydra-Matic Drive is one more convincing proof that you can . . . "Look to OLDS for all that's NEW!"