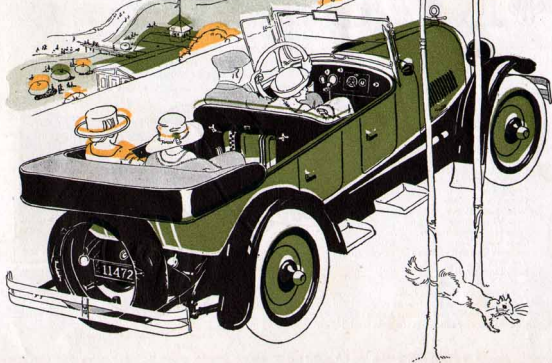


The Smartest of Smart Cars

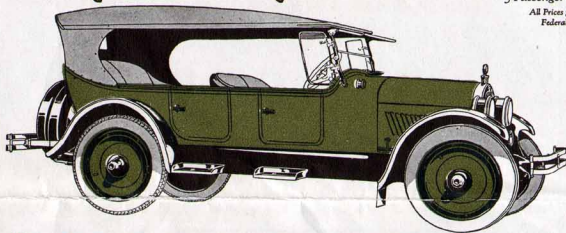


Oldsmobile

8

Sport Roadster

Super Sport



\$1675

AS THE name indicates, the Super-Sport is a super-car in every respect. In appearance, finish, equipment, power, economy, and price it is truly a "car without a competitor." The equipment is complete to the smallest detail — finish and upholstery are of the finest — and beneath, there is the matchless Oldsmobile eight-cylinder engine and chassis, with power as smooth as velvet and as dependable as time.

Equipment

- Tuarec Steel Wheels
- Bicycle Type Fenders
- Cast Aluminum Steps
- Triple Bar Bumpers
- Boyce Motorator
- Windshield Wings
- Windshield Viscer
- Cowl Ventilator
- Cowl Lights
- Spotlight
- Step Lights
- Camo Capar Lighter
- Windshield Wiper
- Rear View Mirror
- Staps in all compartments
- Clear Vision Top
- Barbank Top and Curtains
- Top Box
- Body Guard Rails
- Special Tool Compartment
- Tire Carrier for two extra tires
- Golf Bag Carrier in Roadster only
- Combination Stop and Parking Lights
- Color—Weathered Bronze (a soft green shade)

Other Body Types

- 5-Passenger Touring \$1375
- 4-Passenger Coupe 1875
- 5-Passenger Sedan 2025

All Prices f. o. b. Lansing
Federal Tax Extra

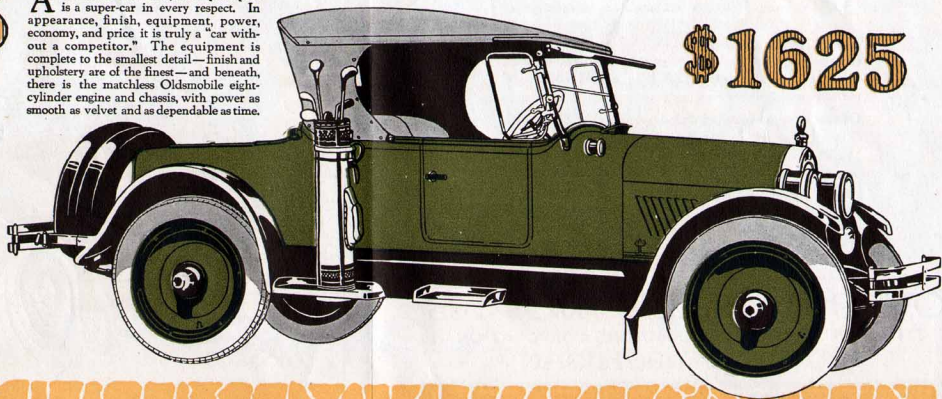
THE introduction of the four-passenger Super-Sport created a new vogue in cars of this class of the touring type. Now, the Sport Roadster establishes a new standard of beauty, equipment, and performance among so-called sport cars of the single seat type.

There is generous room for three passengers in the new Sport Roadster, and every provision is made for comfort and convenience. Like the Super-Sport, the Sport Roadster is complete in every respect. No equipment remains to be purchased later.

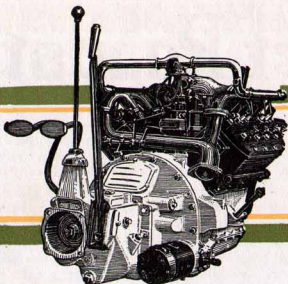
A roomy parcel compartment is located just behind the wide, deeply upholstered seat. In addition, a wide, deep luggage space is provided beneath the rear deck. A special tool compartment is located in the left hand door, giving immediate and easy access to tools without disturbing passengers.

The golf bag carrier on the right side of the car will meet with instant favor on the part of the golf enthusiast. When not required for this purpose, provision is made for utilizing the broad platform for strapping down parcels or pieces of baggage.

Words cannot do justice to this wonderful car. To judge it, you must see it and drive it. Until you do, you will never know the full measure of beauty, comfort and convenience which such a car can and does provide.



\$1625



The Highest Development of the Eight Cylinder Engine

IN THE Model 47 eight-cylinder power plant Oldsmobile has achieved an engineering masterpiece—nothing less. This most compact of all “eight” engines delivers practically unlimited power and speed without perceptible vibration at any rate of travel. Further, its scientific design, plus an extraordinary amplitude of bearing surfaces [perfectly lubricated under pressure], plus 100 per cent quality in the materials and workmanship that enter into its construction, give this engine an amazing measure of endurance. And it is a very economical car to operate.

Of the many outstanding characteristics that distinguish this engine, its great power range stands foremost. While its S. A. E. rating is 26.45 horse power, it actually develops 63.5 h. p. at 2710 revolutions. The significance of this is best expressed in terms of performance, as you will discover when its power efficiency at all speeds and under all conditions is demonstrated to you.

OLDS MOTOR WORKS
DIVISION OF GENERAL MOTORS CORPORATION
LANSING MICHIGAN