

Briefly Describing The

1915 BUICK

The Car of Economy,
Power and Efficiency



Buick Motor Company

WHOLESALE DISTRIBUTORS

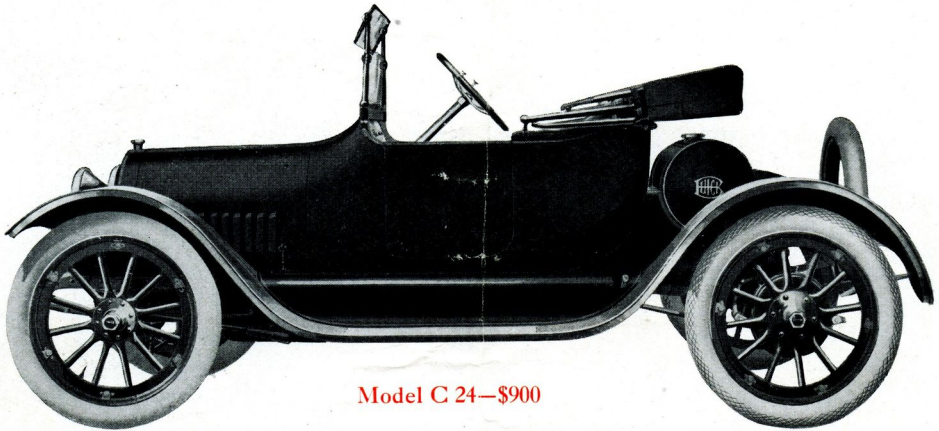
Sales and Display Rooms—Admiral Boulevard and McGee St.

KANSAS CITY, MO.

Sturdy enough for any service—Handsome enough for any company

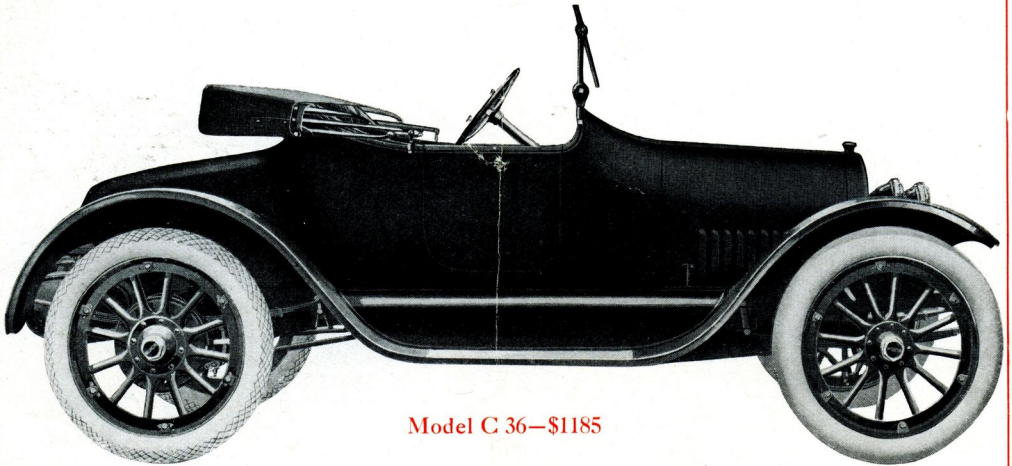
Four Cylinder Roadsters

Beauty in design coupled with highest efficiency and economy, characterizes the nineteen-fifteen Buick Roadsters—Built for service and designed for comfort and convenience, with every feature necessary to make them ideal in every respect.



Model C 24—\$900

A comfortable roadster, with deep roomy seat, plenty of leg room, amply powered, easy to handle, economical in operation, 28 actual H. P., 106-inch wheel base, 32x3½ tires, anti-skid in rear, complete Delco equipped for starting and lighting, all electric lights, electric horn, license plate hangers, inside operating side curtains. In fact, up to the minute in every particular.



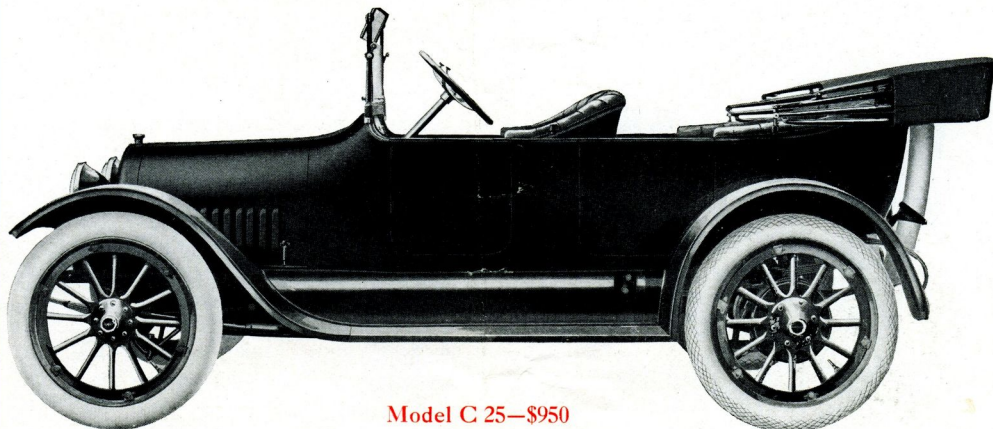
Model C 36—\$1185

Richly appointed, and generally accredited the handsomest roadster of the year. Complete in every detail. 112-inch wheel base, 34x4 tires, anti-skid in rear, brake test 35 H. P., unit power plant, three-point suspension, twenty-gallon gasoline tank, extra deep cowl with instrument board, fully electric lighted, Delco system for starting and lighting. All appointments rich and refined.

A car for the family, capacious, graceful in lines, economical in operation

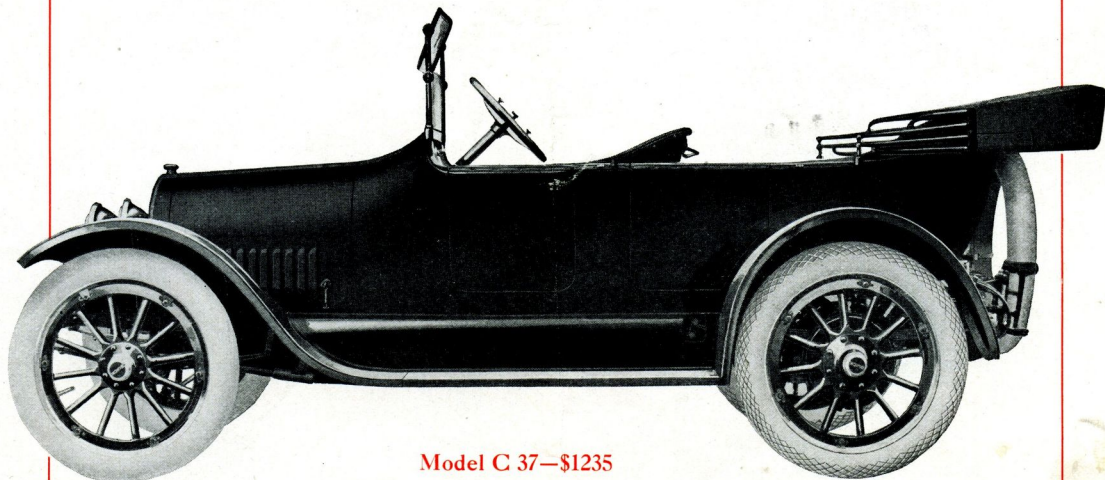
Four Cylinder Touring Cars

More miles at a lower fuel cost, more comfort and satisfaction per mile. Every car convenience provided, and with a notable excellence in equipment and trimming, places the nineteen-fifteen Buick touring cars practically in a class by themselves.



Model C 25—\$950

An ideal family vehicle at a price that places it within reach of anyone. Plenty of room for five and plenty of power for any load. Wheel base 106 inches, 32x3½ tires, anti-skid in rear, 28 brake test H. P., complete electric equipment, Delco system, new windshield, inside top curtains, and every other feature necessary to make it a car for the family.



Model C 37—\$1235

A beautiful streamline body, with graceful cowl; extra wide deep seats, advanced ideas in design and every detail making for utility, places this car at once in a class of its own. 35 actual brake test H. P., 34x4 tires, anti-skid in rear, wheel base 112 inches. Full Delco equipment for starting and lights. Inside curtains, new shield and every feature of notable excellence.

The Buick Six

The Buick Six fulfills all that six-cylinder construction promises. It is flexible, silent, powerful. It demonstrates in the fullest possible manner the wonderful possibilities of the Buick Overhead Valve Motor.

Seven-passenger streamline body, extra wide seats and doors, large roomy tonneau, extra seats fold down against back of front seat.

Special Buick cantilever springs, 3 inches wide and 50 inches long; the longest lived and easiest riding spring used in large car construction.

Full 55 H. P. under brake test, 130-inch wheel base, 36x4½ tires, anti-skid in the rear, three-point suspension, unit power plant, full floating rear axle, nickle steel axle shafts.

Luxuriously upholstered, round front deep tilt cushions, electric lights throughout, license holders, headlight dimmers, electric horn, every modern car equipment that is worth having.

Delco single unit system for starting, lighting and ignition. Not as an attachment, but an integral part of the motor.

Highest six-cylinder economy under regular road conditions, greatest mileage per gallon and best power performances are records being daily made and verified by this car in every locality and under all conditions.

*“When better automobiles are built,
Buick will build them.”*

Model C 55—A Real Six—\$1650

All cars fully Deleo equipped at no extra cost and all prices herein are F. O. B. factory at Flint, Mich.
Complete specifications gladly furnished for the asking.

