

1984

CHRYSLER

---

# LEBARON



## THE CHRYSLER LeBARONS. LIKE NO OTHER CARS IN AMERICA, EUROPE OR JAPAN.

No other car manufacturer offers such a wide choice of front-wheel drive models in one series. Available in two-door coupe, four-door sedan, convertible and Town & Country wagon models, the Chrysler LeBarons continue to offer the distinctive styling, quality construction, efficiency and innovative technology that have made

them midsize successes. New features for 1984 make the Chrysler LeBarons even more desirable with options such as the 2.2-liter turbocharged Trans-4 engine and electronically tuned AM/FM/MX radios with integral digital clocks. New standard features include body-sill moldings, full wheel opening moldings and new

taillamps on all models except Town & Country wagon. The convertible includes a power operated top and quarter windows, side catches, glass backlight and larger rear seat. Read the details in this catalog, then visit your Chrysler dealer to see how easily you can fit a Chrysler LeBaron into your life.



**About this catalog.** We have tried to make this catalog as complete as possible. And we hope you find it useful. However, since the time of printing, some of the information you'll find here may have been updated. Your dealer has details, and you should ask him for current information before ordering.

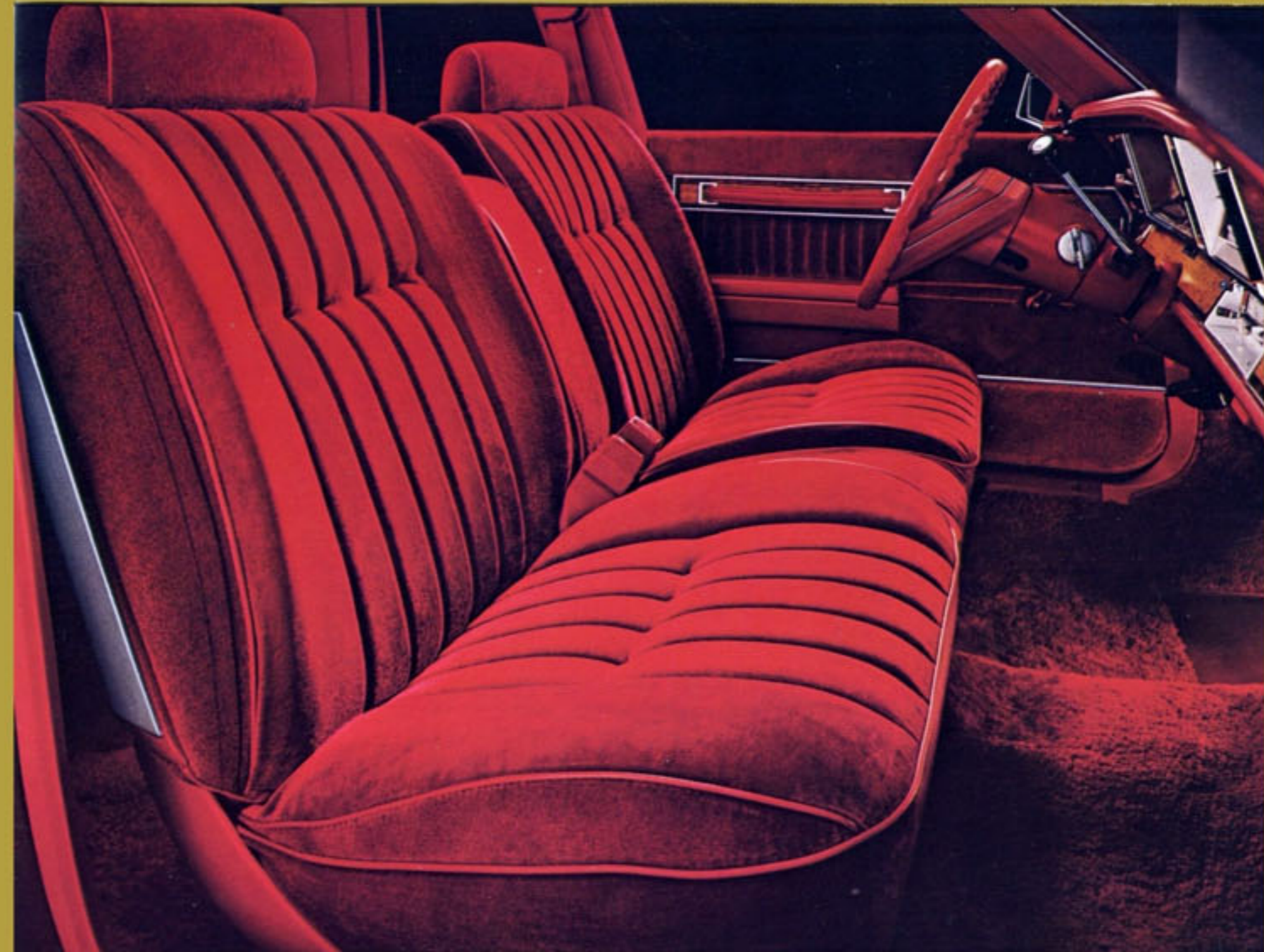






LeBaron four-door in Garnet Red with Red vinyl roof.

Standard cloth-and-vinyl split-back bench seat with folding center armrest, shown in Red.\*



## LeBARON FOUR-DOOR DEFINES TODAY'S MIDSIZE SEDAN.

The Chrysler LeBaron four-door sedan is what the contemporary midsize sedan should be. Comfort and room for six people. Aerodynamically "clean" styling with eye appeal. Fuel efficient.\* Built with quality.

Chrysler's advanced front-wheel drive technology made room available for six by eliminating the large drive train hump found on cars with conventional drive. The comfort comes from handsome, plush interiors with a standard cloth-and-vinyl folding center armrest front seat that now has a full 7.5 inches of travel. Drivers will appreciate new features that include a two-spoke luxury steering wheel and instrument cluster with dark butterfly walnut woodtone accents. A new padded top cover for the instrument panel has an integral padded face. Also new is the electronically tuned AM radio with integral digital clock. (Standard radio with clock may be deleted for credit on factory orders.)

LeBaron four-door's crisp, aerodynamic look is accented handsomely with a full padded vinyl roof that incorporates extensions into the upper rear doors. New styling touches include standard deluxe wheel covers, and wheel opening moldings.

\*EPA EST MPG ratings for LeBaron four-door with 2.2-liter engine and three-speed automatic transaxle are 27 EPA EST MPG, 41 estimated highway, California mileage, 32 EPA EST MPG, 43 estimated highway. Use EPA EST MPG ratings for comparison. Your mileage may differ depending on speed, weather, and trip length. Actual highway mileage probably will be lower than highway estimate.



Standard padded instrument panel and cluster shown in Red, with available electronically tuned AM/FM stereo radio and air conditioning.

Optional cloth-and-vinyl high-back bucket seats shown in Charcoal.

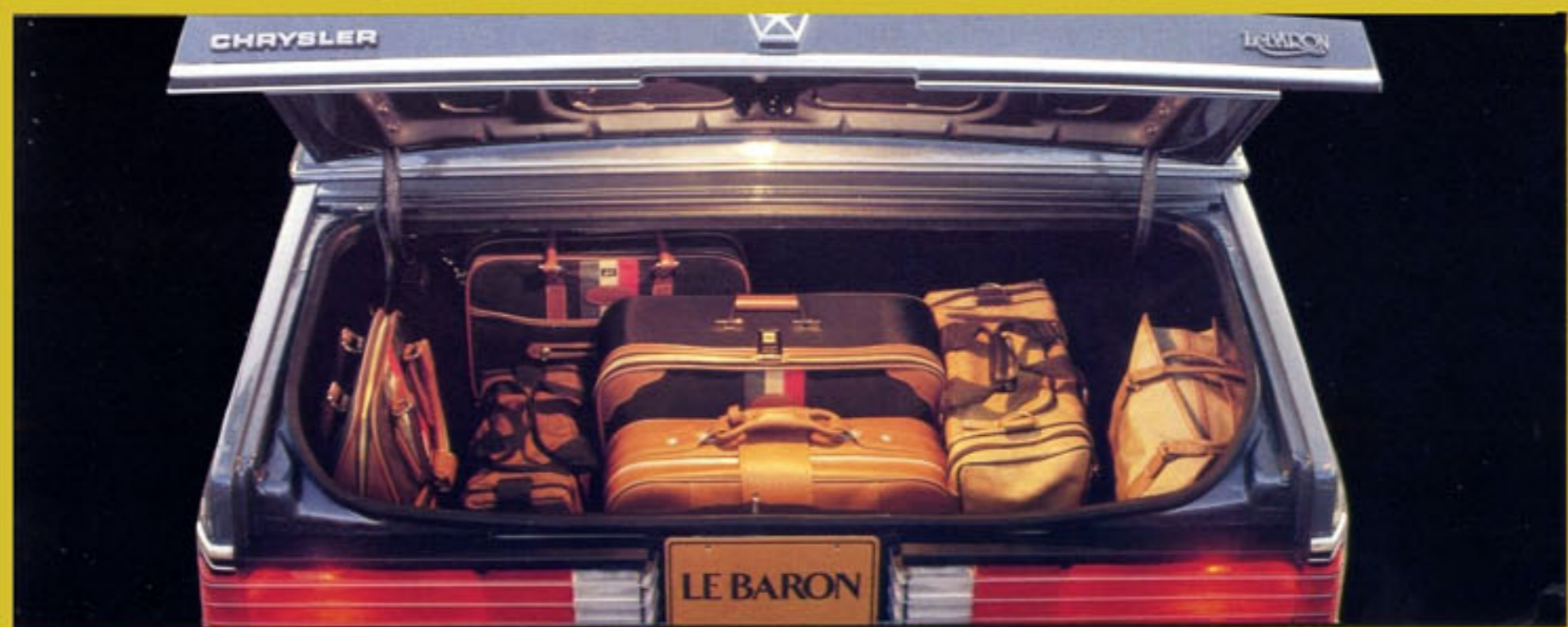
LeBARON  
TWO-DOOR COUPE  
IS AN EXAMPLE OF  
HOW CHRYSLER  
BUILDS THEM BETTER.

The combination of luxury, value and technology is a rare find in the automotive world. Not so with the 1984 Chrysler LeBarons.

A prime example: the LeBaron two-door coupe. Its front-wheel drive technology is heightened through carefully selected suspension components to provide a stable ride and precise control. The Iso-Strut front suspension is given greater stability with a linkless antisway bar. The rear suspension consists of a flex arm beam axle with trailing links, coil springs and premium shock absorbers. Add the standard low-roll-resistant all-weather steel-belted radial tires and power-assisted rack-and-pinion steering and you enjoy excellent ride and control.

Now about the value. Quality certainly is an integral part of value, and all Chrysler Corporation vehicles are built with quality. Through use of computers to check materials and components before assembly. Through extensive use of galvanized metals and pre-coated steels to fight rust. Through robotic welding for bodies that stay strong longer.

And it's all backed by Chrysler Corporation's unique 5/50 Protection Plan, a limited warranty that extends coverage on power train components, including engine, transaxle, and axle—plus outer panel rust-through protection—for five years or 50,000 miles, whichever comes first. A deductible applies. Fleet and lease vehicles are excluded. See your dealer for details.



LeBaron two-door in Gunmetal Blue with Blue vinyl landau roof.

Standard center armrest bench seat shown in Beige.



The Town & Country shown in White with simulated wood trim.



### THE TOWN & COUNTRY TRADITION CONTINUES WITH STYLE AND INNOVATION.

The Town & Country wagon has been a trend-setter among station wagons for nearly 45 years. The trend continues for 1984.

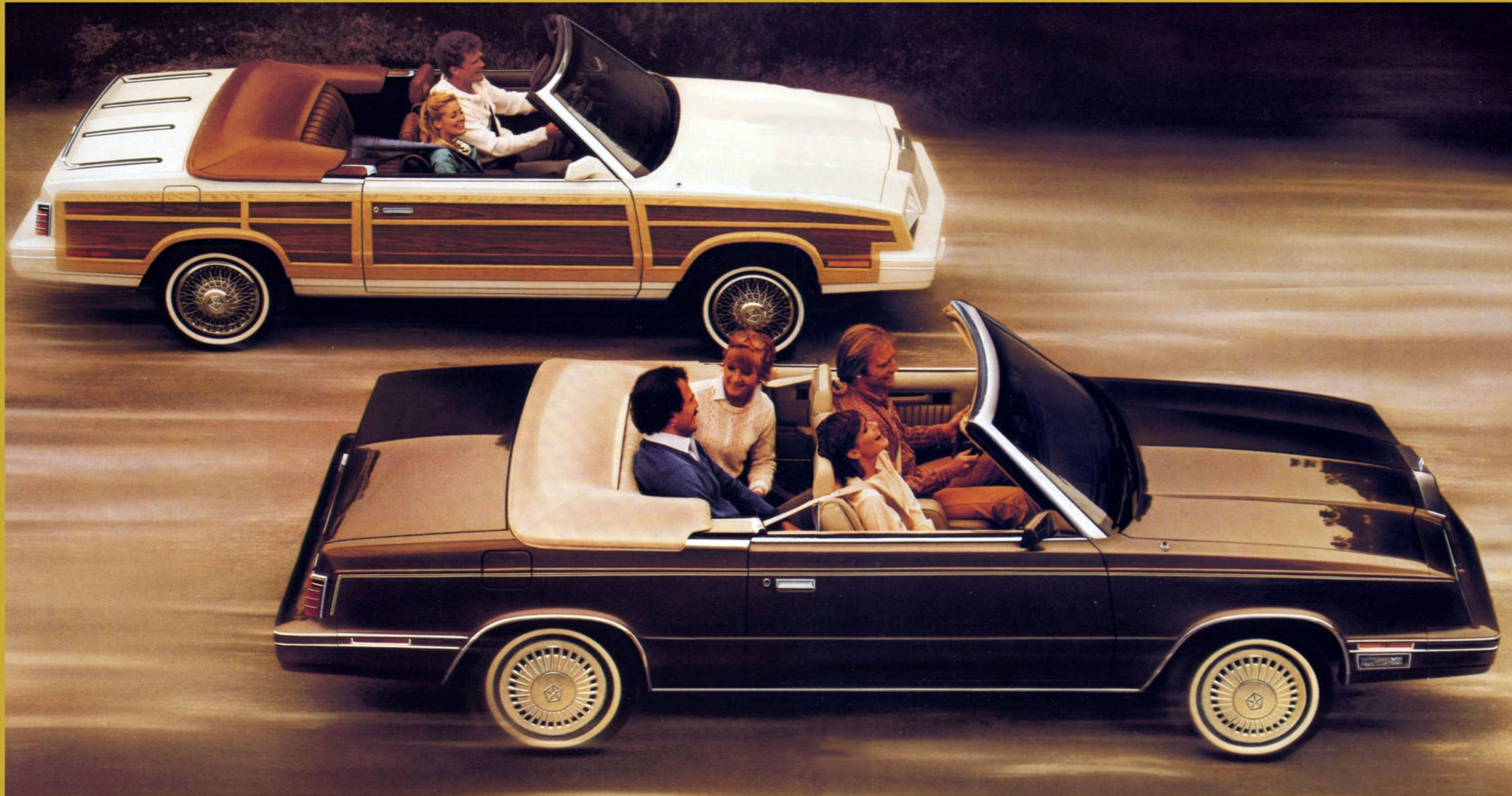
New standard features that wagon people will especially appreciate include a roof luggage rack, and a new 14-gallon fuel tank for extended driving range. New options include new sound systems, cast aluminum wheels, and luxury leather-wrapped steering wheel.

In offering new standard features and options, Chrysler did not trifle with the prestigious Town & Country tradition. The distinctive looks remain with simulated white ash body-side and liftgate moldings with simulated marine teak woodgrain appearance panels. The interiors remain stylish and comfortable. They are also roomy—fold down the rear seat in the Town & Country and there's room for 69.6 cubic feet of cargo on the fully carpeted load floor (protected by skid strips, of course).

Increased power is present in Town & Country to carry your cargo, with Chrysler's 2.2-liter Trans-4 engine producing two more horsepower for a total of 96. And Town & Country has a wide-ratio three-speed trans-axle as standard equipment.



Available Mark Cross leather and vinyl 50/50 bench seat.



FOR THAT SPECIAL  
CONVERTIBLE FEELING  
—CHRYSLER  
CONVERTIBLES

The return of the convertible is further proof of Chrysler innovation. For it was not just the return of a car with a folding top that made Chrysler a leader here. The advent of the LeBaron convertible was the beginning of the era of sleek, high tech convertibles.

LeBaron's trim, aerodynamic looks—styling so smooth only 13.5 horsepower is required to move a LeBaron two-door coupe at 50 miles per hour—encapsulate roomy, comfortable interiors that set standards for midsize cars.

Other carmakers are following Chrysler's lead in 1984. But now they have a tougher act to follow. LeBaron has important new features such as new folding top designed with a glass rear window; a roomier backseat, and power drop rear quarter windows controlled conveniently by console switches and side catches. There are also the standard wide-ratio three-speed automatic transaxle and a more powerful 2.2-liter engine with 96 horsepower.

New options are headed by a real "breath-taker"—the 2.2-liter turbocharged Trans-4 engine that generates 140 horsepower. Added to the Mark Cross Convertible Package with its handsome leather-and-vinyl seating is an electronic instrument cluster with electronic speedometer and odometer, analog gauges for fuel, voltage, oil and temperature, and car graphic message center.



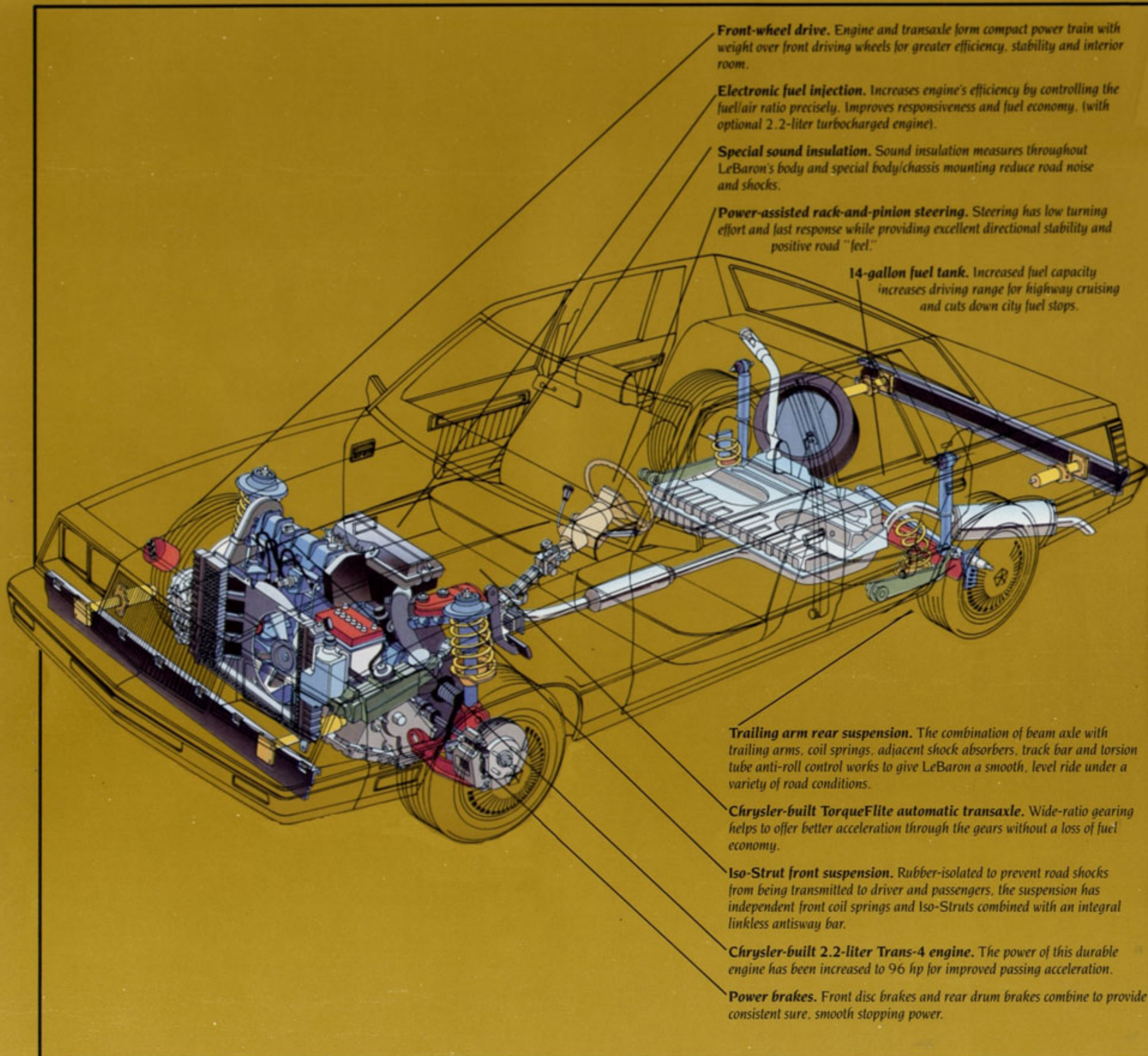


THE INSIDE STORY  
ON LeBARON IS  
PLUSH, ROOMY AND  
COMFORTABLE.

New interior features include standard deep pile 16-ounce carpeting throughout the passenger compartment, for Town & Country and two-door coupe. The four-door sedan and Town & Country have a cloth-and-vinyl front bench seat with folding center armrest. The two-door coupe has cloth high-back bucket seats.

The ultimate interior is the Mark Cross Package available on all LeBaron models. Except on the convertible, this option includes leather-and-vinyl 50/50 front seat with dual armrests, center console, and driver and passenger front seatback recliners. Also included are door trim panels with leather-like inserts and Mark Cross medallions, and leather-wrapped luxury steering wheel.

On the convertible, the Mark Cross Package includes leather low-back bucket seats, power driver's seat, Illuminated Entry System and more.



**Front-wheel drive.** Engine and transaxle form compact power train with weight over front driving wheels for greater efficiency, stability and interior room.

**Electronic fuel injection.** Increases engine's efficiency by controlling the fuel/air ratio precisely. Improves responsiveness and fuel economy. (with optional 2.2-liter turbocharged engine).

**Special sound insulation.** Sound insulation measures throughout LeBaron's body and special body/chassis mounting reduce road noise and shocks.

**Power-assisted rack-and-pinion steering.** Steering has low turning effort and fast response while providing excellent directional stability and positive road "feel."

**14-gallon fuel tank.** Increased fuel capacity increases driving range for highway cruising and cuts down city fuel stops.

**Trailing arm rear suspension.** The combination of beam axle with trailing arms, coil springs, adjacent shock absorbers, track bar and torsion tube anti-roll control works to give LeBaron a smooth, level ride under a variety of road conditions.

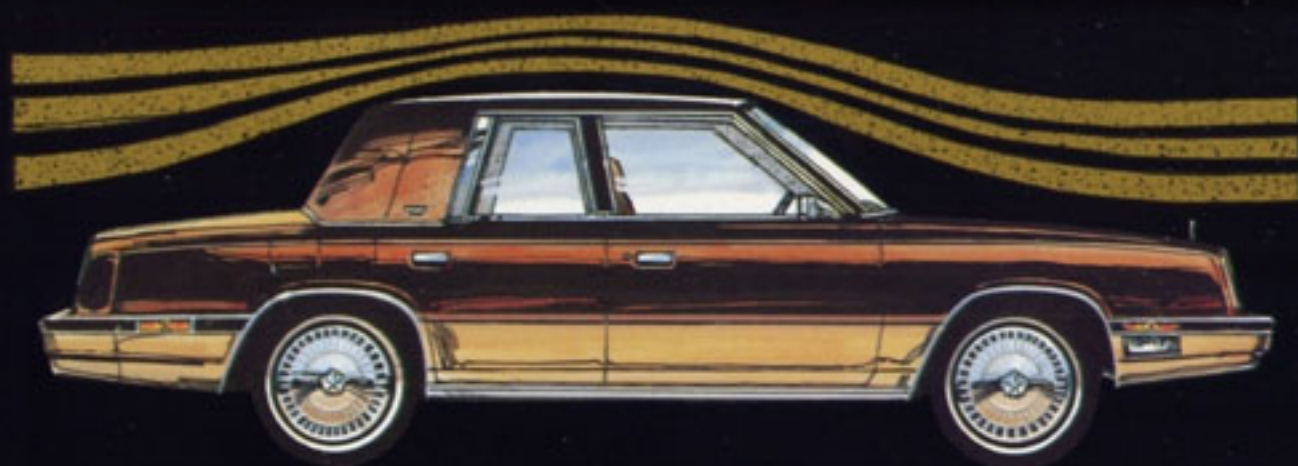
**Chrysler-built TorqueFlite automatic transaxle.** Wide-ratio gearing helps to offer better acceleration through the gears without a loss of fuel economy.

**Iso-Strut front suspension.** Rubber-isolated to prevent road shocks from being transmitted to driver and passengers, the suspension has independent front coil springs and Iso-Struts combined with an integral linkless antisway bar.

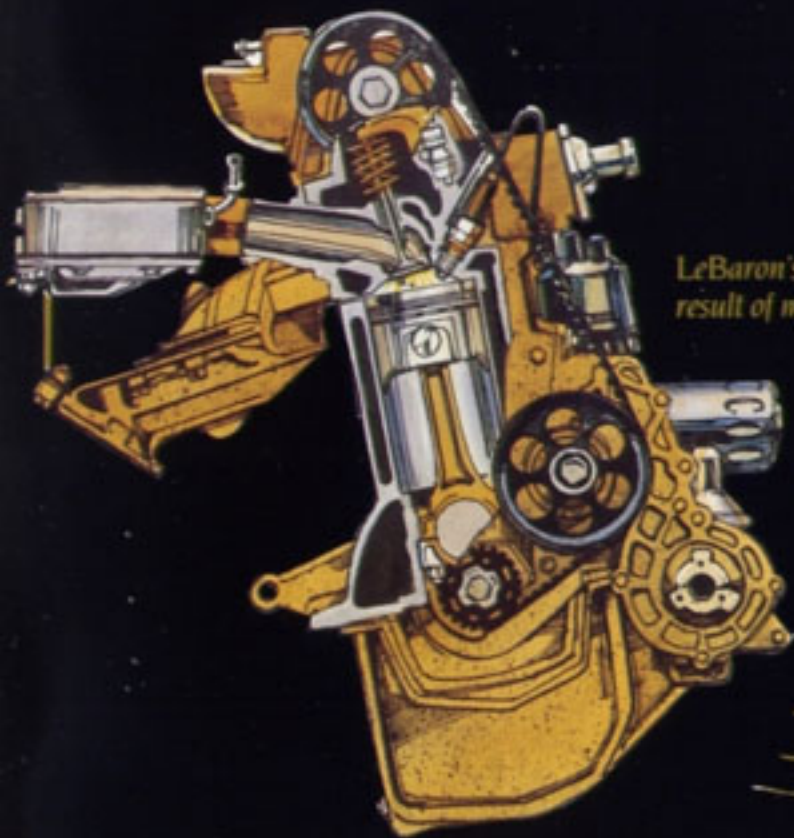
**Chrysler-built 2.2-liter Trans-4 engine.** The power of this durable engine has been increased to 96 hp for improved passing acceleration.

**Power brakes.** Front disc brakes and rear drum brakes combine to provide consistent sure, smooth stopping power.

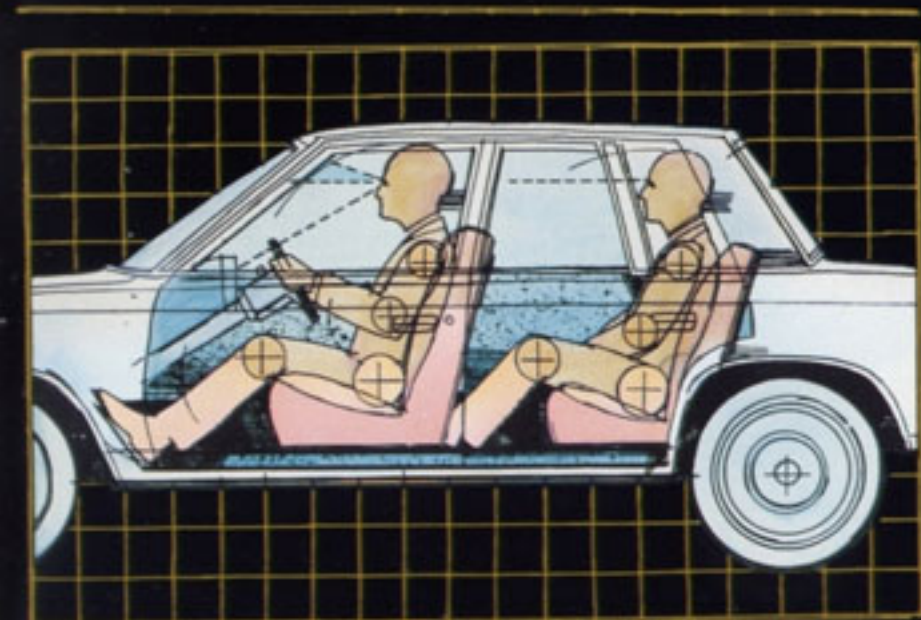
*LeBaron's sleek, aerodynamic styling looks good and helps make it fuel efficient.*



*LeBaron's standard 2.2-liter engine has been refined as the result of millions of miles of front-wheel drive experience.*



*Robotic welding is one of the many assembly steps that create LeBaron with quality.*



*The LeBaron is designed to carry people in roomy, luxurious comfort.*

## WHAT LeBARON'S PENTASTAR MEANS TO YOU.

Chrysler Corporation's advanced engineering and technology produce inherent quality and value in every Chrysler designed and built.

Some of the extensive steps taken to make sure you get all the quality and value possible are discussed at left. Look them over and consider them when shopping for your next new car, for these are the things that enable the Chrysler Corporation to put the Pentastar symbol on a LeBaron with pride.

The five points of the Pentastar represent engineering excellence, design, constantly improving quality, durability, and a dedicated and strong dealer organization.

Our confidence in all the things that the Pentastar represents enables us to offer you our 5/50 Protection Plan. It's a limited warranty that extends coverage on power train components, including engine, transaxle, and axle—plus outer panel rust-through protection—to five years or 50,000 miles, whichever comes first. A deductible does apply. Fleet and lease vehicles excluded. See your dealer for details.

We are confident that when you shop for a midsize car, the Pentastar on LeBaron's hood will mean a lot to you.

LeBARON—THE COMPLETE SERIES OF CARS WITH A COMPLETE LIST OF OPTIONS

**1. Electronic instrument cluster with leather-wrapped steering wheel.** Available as part of the Mark Cross Convertible Package, the cluster includes electronic speedometer and odometer and analog multi-colored fuel, voltage, oil and temperature gauges with a car graphic message center. A luxury leather-wrapped two-spoke steering wheel also is part of the package.

**2. Rear window defroster.** This convenient feature quickly melts ice and snow on your rear window. It is available on LeBaron two-door and four-door models, and the Town & Country wagon. This option includes tinted rear window and heavy-duty 78-amp alternator.

**3. Illuminated vanity mirror.** Placed behind the passenger side sun visor, this option provides extra convenience for your driving companion. (Not available on convertible.)

**4. Tilt steering wheel.** A convenient option that lets you slip in and out of the driver's seat easily. The steering wheel tilts to six different positions to adjust to your own particular driving comfort.

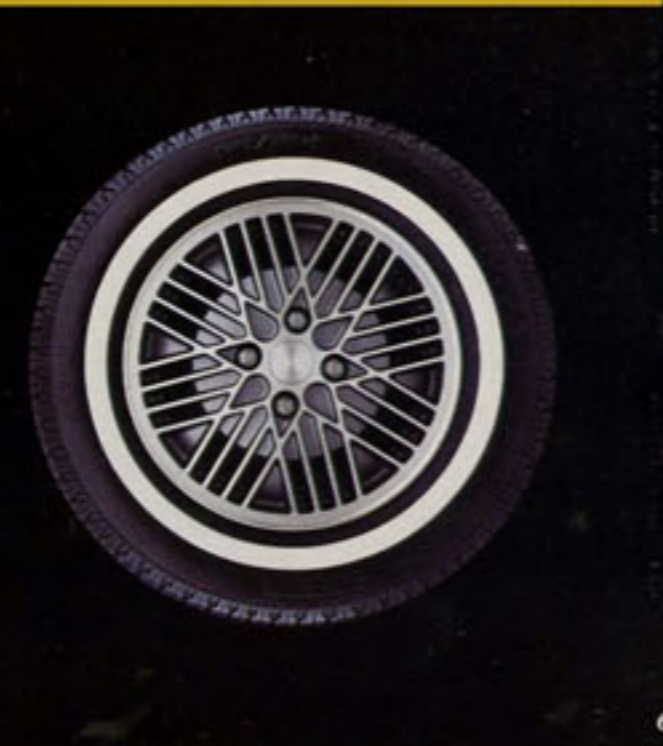
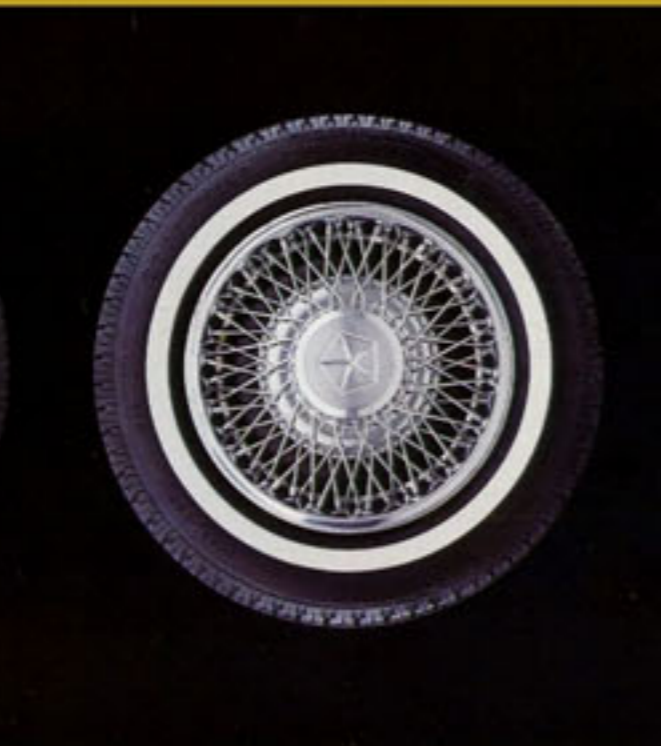
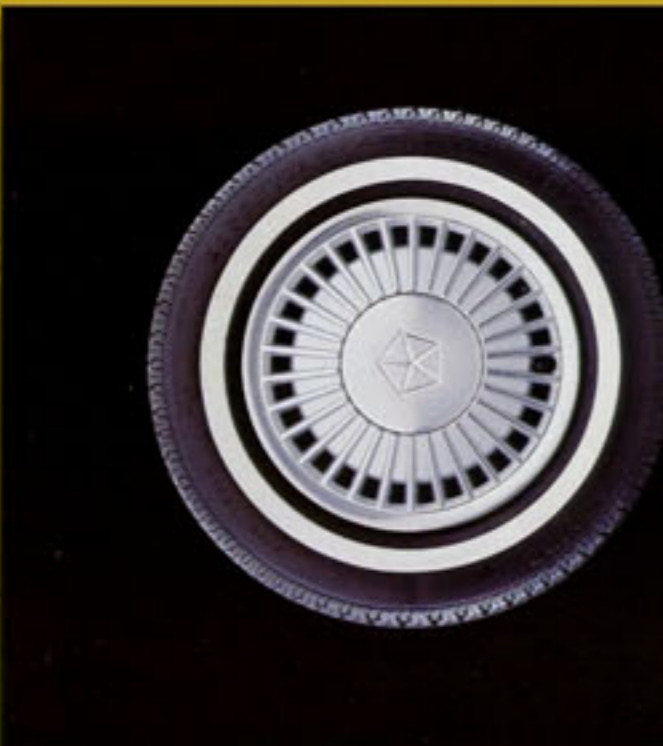
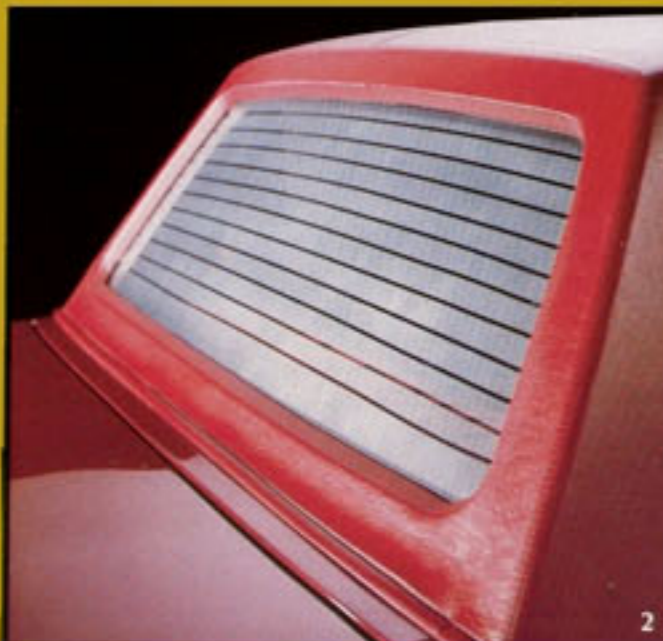
**5. AM/FM/MX stereo radio with cassette player featuring Dolby® sound and integral digital clock.** This optional radio includes Seek-and-Scan feature to enable you to find your stations and programs. A memory capability allows you to store ten AM and ten FM stations; call up your choice at the touch of a button. The cassette player lets you take along your favorite tapes.

**6. Aluminum road wheels/wire wheel covers.** Add flair and style to any LeBaron model with optional cast aluminum wheels or wire wheel covers. The aluminum wheels are available at no extra cost with the Mark Cross Convertible Package.

**7. Air conditioning.** Enjoy cool, clean air whenever you want it with optional bi-level air conditioning that helps keep even temperatures while eliminating cool spots.

**8. Automatic speed control.** This option makes long trips more economical by enabling you to drive at a more constant speed. Also makes long-distance cruising more comfortable by enabling you to change positions in the driver's seat.

\*Dolby is a trademark of Dolby Laboratories.



OPTIONAL EQUIPMENT

Certain models, packages, and options are subject to specific restrictions, requirements, and late availability. Consult your dealer for current ordering information.

	LeBaron Two-Door Coupe	LeBaron Two-Door Sedan	LeBaron Convertible	Town & Country Wagon
Air Conditioning*—Tinted glass required	E	E	E	E
Armrest—Freestanding	E	E	S	E
Battery—500-ampere maintenance-free	E	E	E	E
Bumper Guards—Front and rear	E	E	E	E
Console—Bucket seats required	S	E	S	E
Console—Shift lever, quarter window and power top switches	NA	NA	S	NA
Cornering Lamps	E	E	E	NA
Defroster—Electrically heated two-door and four-door rear window, liftgate glass on wagons (required at extra cost on all sedans and coupes registered in New York state) includes tinted rear window and 370-amp battery with 2.6-liter engine	E	E	NA	E
Electronic Voice Alert System—Includes key-in-ignition, headlamps-on, fasten seat belts, door ajar, low washer fluid, parking brake on, low fuel, low engine oil pressure, engine overheating, electrical system malfunction	E		E	E
Engine Emissions Controls—California (required at extra cost on all vehicles registered in California)	F	RC	E	E
Engine—2.6-liter, built by Mitsubishi (required with air conditioning on all wagons; automatic transaxle required at extra cost)	E	E	E	E
Engine—2.2-liter, turbocharged (automatic transaxle required)	E	E	E	NA
Engine Cooling—Maximum; not available with air conditioning* (recommended with field-installed air conditioning)	E	E	NA	E
Glass—Tinted; all windows (required with air conditioning)	E	E	S	E
Illuminated Entry System	E	E	E	NA
Mats—Accessory floor, front; color-keyed	NA	NA	E	NA
Mats—Accessory floor, front and rear; color-keyed	E	E	NA	E
Mirror—Interior, right visor; illuminated	E	E	NA	E
Mirrors—Exterior, dual power adjustable; chrome	E	E	NA	E
Mirrors—Exterior, dual remote control; chrome	E	E	NA	S
Moldings—Body-side, narrow; with color-keyed vinyl insert	E	E	E	NA
Power—Deck lid release (control in glove box)	E	E	E	NA
Door locks	E	E	E	E
Liftgate release	NA	NA	NA	E
Seat; bench (not available with manual transaxle)	E	E	NA	E
Seat; left, bucket or 50/50 seat	E	E	E	E
Windows (power rear quarter window standard on convertible)	E	E	E	E

	LeBaron Two-Door Coupe	LeBaron Two-Door Sedan	LeBaron Convertible	Town & Country Wagon
Radios—AM/FM stereo, cassette player with Dolby® six speakers; electronically tuned integral digital clock	E	E	E	E
AM/FM stereo, electronically tuned integral digital clock	E	E	E	E
AM/FM stereo, six speakers electronically tuned integral digital clock	E	E	E	E
Delete, standard radio with clock may be deleted for credit on factory orders	CO	CO	CO	CO
Premium Speaker Package available for electronically tuned stereo radio	E	E	NA	E
Seat—Bench, center armrest; cloth (automatic transaxle required)	NC	S	NA	S
Seat—Bucket, high-back, cloth	S	E	NA	NA
Spare Tire—Conventional	E	E	E	E
Speed Control—Automatic (deluxe wipers required at extra cost)	E	E	E	E
Steering Column—Tilt (deluxe intermittent windshield wipers required at extra cost)	E	E	E	E
Steering Wheel—Luxury, two-spoke, leather-wrapped	E	E	E	E
Stripe—Body-side, tape (not available with Two-Tone Package)	E	E	E	NA
Transaxle—Automatic, T-tube Filter	E	S	S	S
Trunk Dress-Up	E	E	E	NA
Undercoating	E	E	E	E
Wheel Covers—Wire, 14-inch (four)	E	E	E	E
Wheels—Cast aluminum, 14-inch (four)	E	E	E	E
Windshield Wipers—Deluxe, with intermittent wipe	E	E	E	E
S—Standard, E—extra cost, CO—only option, NC—no extra cost, NA—not available				
*Vehicles without factory air conditioning may have special recommendations for cooling requirements for later air conditioning installation. See your dealer for details.				

STANDARD FEATURES

Acoustical Package	S	S	S	S
Alternator—60-amp (for 2.2-liter engine)	S	S	S	S
Armrest—Freestanding, center	E	E	S	E
Armrests—Door	S	S	S	S
Ash Receivers—One front, two rear	S	S	S	S
Battery—335-amp/hr., maintenance-free	S	S	S	S
Battery Test Indicator	S	S	S	S
Brake—Parking; foot-pedal operated	S	S	S	S
Brakes—Power, dual diagonal; disc front; self-adjusting drum rear	S	S	S	S
Bumpers—Energy-absorbing; soft fascia covered with color-keyed and bright bumper protective rub strips (bright rub strips on wagon)	S	S	S	S
Carburetor—Electronic feedback	S	S	S	S
Carpeting—Cargo compartment	NA	NA	NA	S
Carpeting—Passenger compartment; color-keyed	S	S	S	S
Chimes—Key-in-ignition, seat belt warning, headlamps-on	S	S	S	S

## INTERIOR TRIM

Standard on LeBaron four-door, and Town & Country wagon, optional on LeBaron two-door.

Kimberly cloth-and-vinyl front and rear bench seats. Split-back front seat with folding center armrest and adjustable head restraints.



Standard on LeBaron two-door, optional on LeBaron four-door.

Kimberly cloth-and-vinyl high-back front bucket and rear bench seats. Optional front freestanding folding center armrest. Shift lever console standard on two-door, optional on four-door.



Standard on LeBaron convertible.

All-vinyl low-back front bucket seats and rear bench seat. Front seats with adjustable head restraints and reclining seatbacks. Shift lever console with freestanding center armrest.



Optional Mark Cross Package on LeBaron two-door, LeBaron four-door, and Town & Country wagon.

Real leather-and-vinyl 50/50 individually adjustable front and rear bench seats. Front seats have adjustable head restraints, folding center armrest and reclining seatbacks. Center console has seat controls and storage bins. Front seatbacks have pockets.



Optional on Town & Country wagon.

All-vinyl low-back front bucket and rear bench seats. Front seats have adjustable head restraints and reclining seatbacks. Freestanding folding center armrest and shift lever console are optional.



LeBaron convertible with Mark Cross Package.

Real leather-and-vinyl low-back front bucket and rear bench seats. Front seats have adjustable head restraints and reclining seatbacks. Shift lever console with freestanding center armrest.



## STANDARD FEATURES (CONTINUED)

	LeBaron Two-Door Coupe	LeBaron Four-Door Sedan	LeBaron Convertible	Town & Country Wagon		LeBaron Two-Door Coupe	LeBaron Four-Door Sedan	LeBaron Convertible	Town & Country Wagon		LeBaron Two-Door Coupe	LeBaron Four-Door Sedan	LeBaron Convertible	Town & Country Wagon
Cigarette Lighter	S	S	S	S	Light—Cargo Compartment	NA	NA	NA	S	Restraint System—Unibelt, deluxe, with tension reliever and automatic release; color-keyed	S	S	S	S
Cleaner Air System	S	S	S	S	Light—Dome/reading	S	S	NA	S	Roof—Full, padded vinyl; with color-keyed surround moldings	NA	S	NA	NA
Clock—Electronic digital; integral with all factory radios	S	S	S	S	Light—Trunk	S	S	S	NA	Roof—Landau, padded vinyl; with color-keyed surround moldings	S	NA	NA	NA
Clutch—Automatic free-play adjuster (self-adjusting linkage)	S	NA	NA	NA	Lights—Ash receiver, backup, courtesy (door-mounted), glove box, headlamp switch, ignition switch with time delay, parking brake warning, side marker with reflector, front door switches for door courtesy light, underhood	S	S	S	S	Seats—Center armrest bench, cloth-and-vinyl; with carpeted door trim panels and courtesy lamps	E	S	NA	S
Coat Hooks	S	S	NA	S	Lights—Front door switches for interior dome light	S	S	NA	S	High-back bucket; cloth	S	E	NA	NA
Computer—Combustion; electronic	S	S	S	S	Lock—Glove box	S	S	S	S	Low-back bucket; all-vinyl	NA	NA	S	NC
Console—Shift lever	S	E	S	E	Lock Cover—Pentastar on deck lid	S	S	S	NA	Spare Tire—High-pressure, low-mileage	S	S	S	S
Control Symbols—International (ISO)	S	S	S	S	Lower Body Protection—Vinyl	S	S	S	S	Steering—Rack-and-pinion; power-assisted	S	S	S	S
Coolant Overflow Reservoir	S	S	S	S	Luggage Rack—Roof	NA	NA	NA	S	Steering Column—Color-keyed	S	S	S	S
Corrosion Protection—Extensive use of galvanized steel	S	S	S	S	Message Center—Visual; includes warning lights for low fuel, low washer fluid, trunk lid or liftgate ajar, and door ajar	S	S	S	S	Steering Wheel—Luxury, two-spoke; color-keyed	S	S	S	S
Directional Signals—With lane-change feature	S	S	S	S	Mirror—Interior, rearview; day/night	S	S	S	S	Suspension—Front: Iso-Strut, coil springs around the shock absorbers, linkless antisway bar; rear: flex arm beam axle with trailing links, coil springs and shock absorbers	S	S	S	S
Door Release Handle—Interior; easy-open with integral rocker-type lock/unlock system	S	S	S	S	Mirrors—Exterior dual manual; chrome	S	S	NA	NA	Taillamps—Wraparound; bright accents	S	S	S	S
Engine—Four-cylinder 2.2-liter Trans-4, with overhead cam and hydraulic valve lash adjusters	S	S	S	S	Mirrors—Exterior dual remote; chrome	E	E	NA	S	Tires—P185/70R14 steel-belted radial wide white sidewall	S	S	S	S
Fan—Engine cooling; electric	S	S	S	S	Mirrors—Exterior dual remote; color-keyed	NA	NA	S	NA	Tires—Tread wear indicator	S	S	S	S
Flashers—Hazard warning	S	S	S	S	Moldings—Body-side; woodtone applique and surround	NA	NA	NA	S	Tonneau Cover—Cargo compartment	NA	NA	NA	S
Front-Wheel Drive	S	S	S	S	Lower deck lid edge and quarter extension; bright	S	S	S	NA	Transaxle—Automatic TorqueFlite; three-speed	E	S	S	S
Fuel Tank—14-gallon; with curb-side fuel filler door and fuel filler cap tether	S	S	S	S	Sill; narrow, bright	S	S	S	NA	Transaxle—Manual; five-speed, with integral overdrive fourth and fifth gears; synchronized in all forward gears; floor shifter	S	NA	NA	NA
Glass—Tinted; all windows	E	E	S	E	Vinyl roof surround; color-keyed	S	NA	NA	NA	Trunk Carpet	S	S	S	NA
Grille—Vertical theme; bright	S	S	S	S	Wheel opening; full	S	S	S	NA	Ventilation System—Upper-level; forced, with four instrument panel outlets	S	S	S	S
Head Restraints—Right and left; adjustable	S	S	S	S	Belt, windshield; bright	S	S	S	S	Voltage Regulator—Electronic	S	S	S	S
Headlamp Bezel—Bright	S	S	S	S	Upper door frame, drip rail; bright	S	S	NA	S	Wheel Covers—Deluxe	S	S	S	S
Headlamps—Halogen high-low beam; rectangular	S	S	S	S	Multifunction Steering Column Lever—Includes switches for windshield wiper/washer, headlamp dimmer, and turn signals	S	S	S	S	Windshield Wipers—Liftgate; with washers	NA	NA	NA	S
Headliner—Cloth-covered; color-keyed	S	S	NA	S	Nameplates—"Chrysler" on deck lid, left side; bright	S	S	S	NA	Two-speed; with electric washers	S	S	S	S
Heater and Defroster	S	S	S	S	Nameplates—"LeBaron" on deck lid, right side; bright	S	S	S	NA	Wiper System—Concealed	S	S	S	S
Hood—Counterbalanced	S	S	S	S	Nameplate—"Town & Country"; bright	NA	NA	NA	S					
Hood Ornament—Pentastar; bright, stand-up	S	S	S	S	Radio—AM; electronically tuned, with integral digital clock (may be deleted for credit on factory orders)	S	S	S	S					
Hood Release—Inside	S	S	S	S										
Horn—Optical; with "pass-flasher" feature	S	S	S	S										
Horns—Dual	S	S	S	S										
Ignition—Electronic	S	S	S	S										
Instrument Panel—Cluster; with white graphics, bright accents, and dark woodtone treatment	S	S	S	S										
Instrument Panel—Pad; top	S	S	S	S										
Insulation—Body; sound	S	S	S	S										
Insulation—Hood pad (2.2-liter engine only)	S	S	S	S										
Latches—Door; shielded to minimize freezing	S	S	S	S										

S—standard, E—extra cost, NA—not available, NC—no extra charge.

## ENGINES AND TRANSAXLES

Type	Displacement	Bore & Stroke	Compression Ratio	Horsepower SAE Net @ RPM	Torque lb-ft @ RPM	Transaxle Availability
Federal & Calif. 4-cylinder OHC	2.2-liter (135 CID)	3.44" x 3.62"	9.0:1	96 hp @ 5,200	119 lb-ft @ 3,200	S—manual (2.57 OTGR) O—automatic (3.02 OTGR)
Federal & Calif. 4-cylinder OHC	2.2-liter (135 CID) turbocharged, with electronic fuel injection	3.44" x 3.62"	8.1:1	140 hp @ 5,600	160 lb-ft @ 1,600	S—automatic (3.02 OTGR)
Federal & Calif. 4-cylinder OHC	2.6-liter* (156 CID)	3.59" x 3.86"	8.7:1	101 hp @ 4,800 (99 hp in Calif.)	140 lb-ft @ 2,800 (137 lb-ft in Calif.)	S—automatic (3.02 OTGR)

OTGR—overall top gear ratio S—standard O—optional \*Built by Mitsubishi Motors Corporation

## DIMENSIONS, WEIGHT AND CAPACITY

	Two-Door	Four-Door	Convertible	Town & Country Wagon
Length	179.7"	179.7"	179.7"	179.9"
Width	68.5"	68.5"	68.5"	68.5"
Height	52.6"	53.0"	54.1"	52.7"
Wheelbase	100.1"	100.1"	100.1"	100.1"
Turning Diameter	34.6'	34.6'	34.6'	34.6'
Curb Weight (lbi)	2,473	2,560	2,594	2,676
Tread—Front	57.6"	57.6"	57.6"	57.6"
Rear	57.0"	57.0"	57.0"	57.0"
Cargo Capacity (est.)	15.0 cu ft	15.0 cu ft	13.0 cu ft	69.2 cu ft
Passenger Capacity	6	6	4	5
Fuel Capacity (gal)	14	14	14	14

\*Includes bumper guards.

### LeBARON EXTERIOR COLORS



\*Not available with Mark Cross Convertible Package.

NOTE: Due to occasional printing irregularities, the colors shown may vary slightly from actual hues. See your Chrysler dealer for accurate color chips.

**TWO-TONE PAINT PACKAGE** (not available on Town & Country wagon or convertible)

- Two-Tone Paint (includes accent tape stripe; vinyl roof color matches upper paint color)

**MAXIMUM ENGINE COOLING PACKAGE** (not available on convertible)

Available only on models without factory-installed air

conditioning. Recommended to provide adequate engine cooling performance on vehicles to be equipped with a field-installed air conditioner. Also recommended for use in high ambient temperature areas and for light-duty trailer towing.

### PACKAGES AND GROUPS

**EASY ORDER GROUPS** (not available on convertible)

- Electrically heated rear window defroster (A&B) • Tinted glass—all windows (AAA & AAB) • Front and rear carpeted floor mats (A&B) • Dual remote control chrome mirrors (A&B)

standard on Town & Country) • Body-side tape stripes (A&B; not available on Town & Country) • Trunk dress-up (A&B; not available on Town & Country) • Deluxe windshield wipers with intermittent wipe (A&B) • Front and rear bumper guards (B) • Illuminated right-side vanity mirror (B) • Power deck lid or liftgate release (B) • Power door locks (B) • Power seat (B) • Power windows (B) • AM/FM electronically tuned stereo radio, with integral digital clock (A&B) • Automatic speed control (B) • Tilt steering column (B) • Undercoating (B) • Wire wheel covers—set of four (B)

**MARK CROSS PACKAGE** (all models except convertible)

Automatic transaxle required at extra cost on two-door models. Includes: • Leather-and-vinyl 50/50 seats with dual armrests; seat-mounted center console containing seat controls; driver and front passenger seatback recliners, and seatback pockets • Luxurious door trim panels with leather-like inserts; Mark Cross medallions on front-door trim panels • Leather-wrapped luxury steering wheel

NOTE: No package component upgrading is permitted.

**MARK CROSS CONVERTIBLE PACKAGE**

- Power driver's seat • Low-back leather-and-vinyl bucket seats with Mark Cross embossments on head restraints • Vinyl door trim panels with flexan inserts; Mark Cross medallions on front-door trim panels • Leather-wrapped luxury steering wheel • Front and rear bumper guards • Cornering lamps • Upper body-side accent tape stripes • Wire wheel covers with locks (four) • Front accessory carpeted floor mats • Electronic Voice Alert System • Electronic in-

strument panel cluster • AM/FM electronically tuned stereo radio, with integral digital clock; six speakers • Tilt steering column • Trunk dress-up • Air conditioning • 2.6-liter four-cylinder engine (manufactured by Mitsubishi) • Power windows • Power deck lid release • Power door locks • Automatic speed control • Deluxe wipers with intermittent wipe • Illuminated entry system

The following optional equipment is available at no extra cost with the Mark Cross Convertible Package: • Aluminum road wheels • AM/FM electronically tuned stereo radio with cassette tape player with Dolby\* sound; integral digital clock; six speakers

NOTE: No other package component upgrading is permitted.

\*Dolby is a trademark of Dolby Laboratories.

### OPTIONAL 5/50 SERVICE CONTRACT COVERAGE

Chrysler Corporation offers a 5/50 "Added Coverage" (in Florida "Added Value Plan") Service Contract which provides protection against rising service and parts costs for specified major repairs not included in the 5/50 Limited Warranty. Coverage starts on the specified components in the plan after your vehicle's "basic" 12 month/12,000 mile warranty expires on these components and continues for five years or 50,000 miles (whichever occurs first) from the vehi-



cle's original warranty start date. A deductible applies. The plan provides an allowance for alternate transportation and towing. Ask your dealer for details.

### STANDARD SAFETY FEATURES

- Safety-Rim wheels • Combination lap/shoulder belts for the driver and right front passenger, and lap belts for all other passengers • Seat belt reminder system • Energy absorbing steering column or steering wheel • Dual braking system with separate brake fluid reservoirs in the master cylinder • Brake fluid pressure loss warning light (also serves as indicator when parking brake is applied) • Hazard warning flasher system • Turn signals with lane-change feature • Backup lights • Energy absorbing instrument panel and sun visors • Front seat head restraints • Energy absorbing front seatbacks • In-side and outside rearview mirrors • Side marker lights and reflectors • Seatback latches on folding seats • Fade resistant front disc brakes • Electric windshield washers and wipers • Ignition and steering column lock • Anti-theft trunk lock • Headlamp and wiper circuit breakers with automatic reset • Key-left-in-ignition warning • Non-override door locks (except driver's door) • Resilient window crank knobs • Side door beams • Dual throttle return springs • Interlocking door latches • Recessed inside door release handles • Rotary glove box latch • Reinforced windshield header and roof (excluding convertible) • Glare reduction measures for windshield wipers, instrument panel, and steering wheel • Double ball-joint rearview mirror mount

### CONSIDER LEASING FROM THE LEASING PROFESSIONALS

In these days of tight money and high interest rates more consumers are considering leasing as an alternative to buying. Leasing a new Chrysler LeBaron or Town & Country usually eliminates large down payments and often results in lower monthly payments because you're paying only for that portion of the vehicle life under the leasing agreement.

Leasing could be right for you, and the more you learn about it the more likely you are to consider it seriously. If leasing sounds like a sensible solution to your transportation needs, talk it over with us—your leasing professionals.

All product illustrations and specifications are based on authorized information. Although descriptions are believed correct at publication approval, accuracy cannot be guaranteed. Chrysler Corporation reserves the right to make changes from time to time, without notice or obligation, in prices, specifications, colors and materials, and to change or discontinue models. See your dealer for the latest information.

MOPAR parts are engineered by Chrysler Corporation for use in your new Chrysler LeBaron or Town & Country. When replacement is necessary, be sure to specify MOPAR parts. Used by professional mechanics all over the world.





THE NEW CHRYSLER CORPORATION