

2011
FLEX



fordvehicles.com



Drive one.

LIFE'S TOO SHORT
TO FEEL BOXED IN.



FLEX LIMITED. INGOT SILVER METALLIC. WHITE SUEDE ROOF. AVAILABLE EQUIPMENT.

The New 2011 Flex

There's nothing mini about it. It's a 3-row crossover. Seats up to 7. Loaded with technology like the available Ford SYNC[®] voice-activated, in-vehicle connectivity system, the available Active Park Assist and an available new one-touch PowerFold[®] 3rd-row seat. Powered by a 3.5L Duratec[®] V6 or the available 3.5L EcoBoost[™] V6 twin-turbocharged, direct-injection engine. Six airbags – including a 3-row Safety Canopy[®] System – are standard. SE, SEL and Limited offer several standout roof-color choices, while the new Flex Titanium is topped with a striking Tuxedo Black Metallic roof. If you're ready to make a statement, Flex is perfect for you.

2011 FLEX

fordvehicles.com



Drive one.



3.5L EcoBoost™ V6

355 Horsepower¹

350 lb.-ft. of Torque¹

21 MPG²

V8 Power + V6 Fuel Economy

Dual Exhaust with Chrome Tips

Electric Power-Assisted Steering

Paired with Intelligent AWD

and 20-in. Aluminum Wheels



FLEX LIMITED. TUXEDO BLACK METALLIC. INGOT SILVER METALLIC ROOF. AVAILABLE EQUIPMENT.

POWER UP – EFFICIENTLY.

Flex isn't just exciting to look at – it's exciting to drive. It hunkers down. Puts a limit on lean. Grabs corners. Soaks up bumps and potholes. It even gives you V8 power with V6 fuel economy thanks to its available **3.5L EcoBoost V6** twin-turbocharged, direct-injection engine. We're talking 355 heart-pounding horsepower, 350 lb.-ft. of torque and up to 21 mpg.² The standard **3.5L Duratec® V6** quickens your pulse with 262 hp, 248 lb.-ft. of torque and up to **24 mpg.³** Both pair with an efficient **6-speed automatic** transmission. EcoBoost models include steering wheel-mounted paddle shifters and **intelligent all-wheel drive (AWD)** for a more spirited, performance-oriented driving experience. One that earned Flex a spot on *AUTOMOBILE Magazine's* list of All-Stars for the 2nd year in a row.

¹Figures achieved using premium unleaded gasoline. Premium fuel is recommended for EcoBoost V6, but not required. ²EPA-estimated 16 mpg city/21 hwy for Flex AWD with EcoBoost engine. ³EPA-estimated 17 mpg city/24 hwy for Flex FWD with Duratec engine, 16 mpg city/22 hwy for Flex AWD with Duratec engine.

2011 FLEX

fordvehicles.com



Drive one.

OPEN YOURSELF TO THE UNEXPECTED.

In here, you'll forget you're actually *in* at all. An available **multipanel Vista Roof™** welcomes the sky for all 3 rows to enjoy. Over the front seats, a sliding moonroof breathes in the fresh air. The 2nd and 3rd rows each get their own overhead windows. With panoramic views like this, you'll be seeing things in a whole new light.



FLEX SEL. MEDIUM LIGHT STONE LEATHER TRIM. AVAILABLE EQUIPMENT.



Available Features: Refrigerated 2nd-Row Console | 110-Volt Outlet | Dual-Headrest DVD Entertainment System | Heated 1st- and 2nd-Row Bucket Seats

2011 FLEX

fordvehicles.com



Almost 10 ft. of Cargo Clearance



INVITE THEM ALL IN.

See that 2nd-row lounging room? It's enough to make a limo green with envy. The simple truth is that Flex offers your friends and family the **most expansive 2nd-row** space in the class.¹ The 2nd-row seats conveniently flip and fold to allow access to the 3rd row. For increased ease, an **autofold release** is included with the available 2nd-row bucket seats and on the 40 section of the standard 2nd-row 60/40 split bench seat. And Flex is just as well suited to carry your favorite things. The available new **PowerFold® 3rd-row seat** starts clearing the way at the push of a button.



FLEX LIMITED. CHARCOAL BLACK LEATHER TRIM. 2ND-ROW BUCKET SEATS. AVAILABLE EQUIPMENT.



Available Features: PowerFold 3rd-Row Seat | Storage Well Behind 3rd Row | Up to 83.2 cu. ft. of Cargo Space

¹Large Crossover class.

2011 FLEX

fordvehicles.com



Drive one.



FLEX LIMITED. WHITE SUEDE. AVAILABLE EQUIPMENT.

GET THE STREETSIDE ADVANTAGE.

Quicker and more user friendly than a luxury brand's competitive system,¹ our available **Active Park Assist** helps you conquer parallel parking **in as little as 24 seconds**. Just press a button and drive by potential spots. Ultrasonic sensors help you find a spot that's big enough, and the system lets you know when it's ready to park. You remove your hands from the steering wheel and respond to system prompts by shifting gears and controlling vehicle speed with the brake and accelerator pedals. The system handles the hard part: **automatically steering the vehicle** into the spot.

¹Based on head-to-head comparison of Ford Flex versus Lexus LS 460 L conducted by Ford Motor Company.

2011 FLEX

fordvehicles.com



Drive one.



FLEX LIMITED. CHARCOAL BLACK LEATHER TRIM. AVAILABLE EQUIPMENT.

INDULGE YOUR PASSION FOR DETAILS.

Tailored leather trim. Crisp contrast stitching. Creatively perforated inserts. Olive ash woodgrain accents. Gleaming chrome and subtle satin-aluminum finishes. **Flex Limited** blends these exquisite elements with sweeping lines and pleasing textures to create a **sensory experience like no other**. Standard on Limited, the **10-way power, heated driver's seat** includes power-adjustable lumbar support. This seat and the **power-adjustable pedals** on Limited both include a convenient memory feature. Cruise and secondary audio controls grace its leather-wrapped steering wheel. New for 2011, **HD Radio™** technology joins the voice-activated **Navigation System** and the 390-watt **Audio System from Sony®** as standard features on Limited. The 12-speaker Sony system's Dolby® Automotive Entertainment Program technology helps Flex deliver surround sound so amazing you have to hear it to believe it.

2011 FLEX

fordvehicles.com





FLEX LIMITED. CHARCOAL BLACK. NAVIGATION SYSTEM AND OTHER AVAILABLE EQUIPMENT.

ADVANCE YOUR TRAVELS.



SYNC. Say the word. Voice-activated **Ford SYNC**® is an award-winning, available system that works with your paired Bluetooth®-enabled mobile phone and your digital media player. It provides hands-free calling, plays music, delivers Vehicle Health Reports and 911 Assist.™ With the touch of a button and voice commands, SYNC with **Traffic, Directions and Information** services provides turn-by-turn directions, personalized traffic alerts and more!

SyncMyRide.com has the latest details.



The available **Navigation System** (shown) features a vibrant 8-in. LCD touch screen and colorful maps that you can zoom and scroll. Standard on Limited and Titanium, this system plays DVDs while Flex is in Park and provides nearly 10 gigs of photo and music storage space. It also includes an introductory 6-month subscription to **SIRIUS Traffic**™ and **SIRIUS Travel Link**™² which provides fuel prices, weather reports, movie listings, sports scores and more. All this, in addition to over 130 channels of SIRIUS® Satellite Radio.

¹Driving while distracted can result in loss of vehicle control. Only use mobile phones and other devices, even with voice commands, when it is safe to do so. Real-time traffic and turn-by-turn directions available in select markets. Standard text messaging and data rates apply. ²Some features unavailable while driving. Subscription required after introductory 6 months expire.

2011 FLEX

fordvehicles.com



Drive one.

New Flex Titanium

Tuxedo Black Metallic Roof
Black-Chrome Grille and Liftgate Appliqué
Blackout Treatment on Headlamps and Taillamps
Alcantara® Suede- and Leather-Trimmed Seating
Alloy Metallic and Circle Check Interior Accents
20-in. Polished Aluminum Wheels



FLEX TITANIUM. INGOT SILVER METALLIC. TUXEDO BLACK METALLIC ROOF. AVAILABLE EQUIPMENT.

MOVE WITH CONFIDENCE.

It tangoes with the unpredictable without missing a step. In addition to standard front-wheel drive, Flex is also available with **intelligent all-wheel drive (AWD)**, which is included on models equipped with the EcoBoost™ V6. This smart system distributes up to 100% of the available torque to the tire or tires with the most traction. On top of that, every Flex includes **traction control** to help prevent wheel slip during acceleration, as well as **AdvanceTrac® with RSC® (Roll Stability Control™)**! It's the only system in the class that uses 2 gyroscopic sensors, monitoring both yaw and roll motions, to provide side-slip control and roll stability control. AdvanceTrac with RSC is always on and always working for you.

*Remember that even advanced technology cannot overcome the laws of physics. It's always possible to lose control of a vehicle due to inappropriate driver input for the conditions.

2011 FLEX

fordvehicles.com



Drive one.



EASE YOUR MIND.

NHTSA ★★★★★ Ratings¹

2010 frontal and side-impact crash tests

6 Standard Airbags

Including 3-row side curtains

SPACE Architecture[®]

Side Protection And Cabin Enhancement



FLEX LIMITED. RED CANDY METALLIC TINTED CLEARCOAT. WHITE SUEDE ROOF. AVAILABLE EQUIPMENT.



Positively habit-forming. The Ford MyKey[®] owner controls feature lets you program ignition keys to help encourage smart driving habits. Buckling up. Traveling at appropriate speeds. And much more.



¹2010 model year. 2011 model year to be tested. Star ratings are part of the U.S. Department of Transportation's Safercar.gov program (www.safercar.gov).

2011 FLEX

fordvehicles.com



Drive one.

STANDARD FEATURES

Mechanical

3.5L Duratec® V6 with 6-speed automatic transmission
4-wheel disc Anti-Lock Brake System (ABS)
Front-wheel drive (FWD)
Power rack-and-pinion steering

Seating

1st-row bucket seats with fold-flat front-passenger seat
2nd-row 60/40 split fold-flat bench with autofold function on 40 section
3rd-row manual fold-in-floor 50/50 split bench

Interior

1st-row center console with armrest, storage, 2 cupholders, and rear pull-out drawer with 2 cupholders and storage for 2nd-row passenger use
12-volt powerpoints (4)
Accessory delay
Auto-dimming rearview mirror
Autolock power door locks
Auxiliary audio input jack
Cabin air filter
Carpeted floor mats in 1st and 2nd rows
Coat hooks in 2nd row (2)
Compass
Cruise control
Cupholders/bottle holders (10)
Driver and front-passenger sun visors with illuminated vanity mirrors
Grab handles (3)
Grocery bag hooks in cargo area
Leather-wrapped shifter
Leather-wrapped steering wheel with cruise and secondary audio controls
Manual tilt/telescoping steering column
Map pockets in 1st-row seat backs
Message center with trip computer
Overhead console with map lights and sunglasses holder
Power windows with one-touch-up/-down driver's side window feature
Reading lamps for 2nd- and 3rd-row passengers

¹Always wear your safety belt and secure children in the rear seat.

²Figures achieved using premium unleaded gasoline.

³Includes 5.0-cu.-ft. rear cargo storage well.

New Vehicle Limited Warranty. We want your Ford Flex ownership experience to be the best it can be. So under this warranty, your new vehicle comes with 3-year/36,000-mile bumper-to-bumper coverage, 5-year/60,000-mile Powertrain Warranty coverage, 5-year/50,000-mile safety restraint coverage, and 5-year/unlimited-mile corrosion (perforation) coverage – all with no deductible. Please ask your Ford Dealer for a copy of this limited warranty.

Roadside Assistance. Covers your vehicle for 5 years or 60,000 miles, so you have the security of knowing that help may be only a phone call away should you run out of fuel, lock yourself out of the vehicle or need towing. Your Ford Dealer can provide complete details on all of these advantages.

Ford Credit. Get the ride you want. Whether you plan to lease or finance, you'll find the choices that are right for you at Ford Credit. Ask your Ford Dealer for details or check us out at fordcredit.com.

Ford Extended Service Plan. For a purchase or lease, the Ford Extended Service Plan (ESP) gives you "Peace-of-Mind" protection designed to cover key vehicle components and protect you from the cost of unexpected repairs. Ask your dealer for a Ford ESP, the only service contract backed exclusively by Ford and honored at all Ford Lincoln Mercury dealerships.

Insurance Services. Get Ford Motor Company quality in your auto insurance. Our program offers industry-leading benefits and competitive rates. Call 1-877-367-3847, or visit us at fordvip.com for a no-obligation quote. Insurance offered by American Road Services Company (in CA, American Road Insurance Agency), a licensed agency and subsidiary of Ford Motor Company.

Exterior

Autolamp automatic headlamps with wiper-activated headlamps feature
Bright polished exhaust tips
Easy Fuel® capless fuel filler
Privacy glass on 2nd- and 3rd-row windows and liftgate
Rear-window defroster
Reverse Sensing System
SecuriCode™ invisible keypad
Windshield wipers – Intermittent front (speed-sensitive) and 2-speed rear

Safety & Security

Personal Safety System™ for driver and front passenger includes dual-stage front airbags, ¹ safety belt pretensioners, safety belt energy-management retractors, safety belt usage sensors, driver's seat position sensor, crash severity sensor, restraint control module and Front-Passenger Sensing System
3-point safety belts for all seating positions
Adjustable head restraints
AdvanceTrac® with RSC® (Roll Stability Control™) and traction control
Battery saver
Belt-Minder® front safety belt reminder
Child-safety rear door locks
Front-seat side airbags ¹
Illuminated Entry System
Integrated keypad transmitter remotes (2)
LATCH – Lower anchors and tether anchors for child-safety seats (3)
MyKey® owner controls feature
Safety Canopy® System with side-curtain airbags ¹ and rollover sensor
SecuriLock® Passive Anti-Theft System
Side-intrusion door beams
SPACE (Side Protection And Cabin Enhancement) Architecture
Tire Pressure Monitoring System (excludes spare)

Horsepower, Torque & EPA-Estimated Fuel Economy

3.5L Duratec V6 Engine	
Horsepower	262 @ 6,250 rpm
Torque (lb.-ft.)	248 @ 4,500 rpm
6-speed automatic	
FWD	17 mpg city/24 hwy
AWD	16 mpg city/22 hwy
3.5L EcoBoost™ V6 Engine	
Horsepower	355 @ 5,700 rpm ²
Torque (lb.-ft.)	350 @ 1,500-5,250 rpm ²
6-speed automatic with steering wheel-mounted paddle shifters	
AWD	16 mpg city/21 hwy

Dimensions & Capacities

Exterior	
Wheelbase	117.9"
Length	201.8"
Height – Excluding options	68.0"
Height – Including options	69.3"
Width – Excluding mirrors	75.9"
Width – Including mirrors	88.8"
Width – Mirrors folded	80.1"

Interior	
1st Row	
Head room	41.8"
Shoulder room	58.4"
Hip room	55.5"
Leg room	40.8"

2nd Row	
Head room	40.5"
Shoulder room	58.1"
Hip room	55.0"
Leg room	44.3"

3rd Row	
Head room	38.7"
Shoulder room	50.8"
Hip room	41.1"
Leg room	33.3"

Cargo Volume (cu. ft.)	
Behind 1st row	83.2
Behind 2nd row	43.2
Behind 3rd row	20.0 ³

Dimensions may vary by trim level. Cargo and load capacity limited by weight and weight distribution.

Comparisons based on 2010 competitive models (Class is Large Crossovers), publicly available information and Ford certification data at time of release. Some features discussed may be optional. Vehicles shown may contain optional equipment. Features shown may be offered only in combination with other options or subject to additional ordering requirements or limitations. Dimensions shown may vary due to optional features and/or production variability. Following release of the PDF, certain changes in standard equipment, options and the like, or product delays may have occurred which would not be included in these pages. Your Ford Dealer is the best source for up-to-date information. Ford Division reserves the right to change product specifications at any time without incurring obligations.

The Bluetooth word mark is a trademark of the Bluetooth SIG, Inc.

Microsoft is a registered trademark of Microsoft Corporation.

Subscriptions governed by SIRIUS Terms and Conditions available at sirius.com. Service available in the 48 contiguous United States and D.C. SIRIUS, XM and all related marks and logos are trademarks of SIRIUS XM Radio Inc. and its subsidiaries.

HD Radio is a proprietary trademark of iBiquity Digital Corp.

Sony is a registered trademark of the Sony Corporation.

Dolby is a registered trademark of Dolby Laboratories Licensing Corporation.

Alcantara is a registered trademark of Alcantara S.p.A., Italy.

© 2010 Ford Motor Company 11FLXWEBPDF

2011 FLEX

fordvehicles.com



Drive one.



SE

Base Rapid Spec 100A

Includes all standard features, plus:

Mechanical

17-in. painted aluminum wheels with P235/60R17 BSW tires

Seating

6-way power driver's seat with 2-way manual front-passenger seat

7-passenger seating

Cloth seating

Interior

AM/FM stereo/single-CD player and 6 speakers

Single-zone air conditioning with 2nd- and 3rd-row adjustable vents

Exterior

Black beltline

Black, manually folding, power sideview mirrors

Body-color-painted door handles

Chrome grille

Fog lamps with chrome bezels

Halogen headlamps



SEL

Base Rapid Spec 200A

Includes select SE features, plus:

Mechanical

18-in. machined aluminum wheels with P235/60R18 BSW tires

Seating

1st-row heated bucket seats, including 10-way power driver's seat with power lumbar and 6-way power passenger seat with manual lumbar

Interior

AM/FM stereo/6-disc in-dash CD changer, 6 speakers and SIRIUS Satellite Radio with introductory 6-month subscription

Cargo net

Dual-zone electronic automatic temperature control

Ford SYNC® voice-activated, in-vehicle connectivity system

Universal garage door opener

Woodgrain appearance appliqué on instrument panel and door trim

Exterior

Body-color, power, heated, manually folding sideview mirrors

Chrome beltline

Chrome door handles

"SEL" badge



LIMITED

Base Rapid Spec 300A

Includes select SEL features, plus:

Mechanical

19-in. polished aluminum wheels with P235/55R19 BSW tires

Seating

1st-row perforated leather-trimmed heated bucket seats, including 10-way power driver's seat with memory and power lumbar, and 6-way power passenger seat with manual lumbar

2nd-row perforated leather-trimmed (outboard positions) 60/40 split bench seat

3rd-row perforated vinyl 50/50 split manually folding bench seat

Interior

110-volt inverter with AC outlet

Ambient lighting in front cupholders, inside front console, front footwells and back of rear console

Audio System from Sony® with AM/FM stereo/single-CD player and 12 speakers in 10 locations with Dolby® Automotive Entertainment Program technology

Chrome scuff plates

Color-keyed leather-wrapped steering wheel with wood inlay

HD Radio™

Power-adjustable pedals with memory

Voice-activated Navigation System¹ featuring SIRIUS Traffic, SIRIUS Travel Link (introductory 6-month subscription) and nearly 10 gigabytes of digital storage for pictures and music; includes DVD and MP3 capability

Exterior

Chrome-capped, power, heated, manually folding sideview mirrors with integrated security approach lamps and memory

High-intensity discharge (HID) headlamps

LED taillamps

"LIMITED" badge

Power liftgate

Rear view camera

Satin-aluminum liftgate appliqué



TITANIUM

Base Rapid Spec 400A

Includes select LIMITED features, plus:

Mechanical

20-in. polished aluminum wheels with P255/45R20 BSW tires

Seating

1st- and 2nd-row leather-trimmed (3rd-row vinyl) seats in Charcoal Black with Gray Alcantara® suede inserts

Interior

Circle Check-appearance appliqué on instrument panel and door-trim inserts

Illuminated scuff plates

Leather-wrapped steering wheel with perforated leather insert, Alloy Metallic accents, cruise and secondary audio controls

Painted Alloy Metallic accents on center stack, console and door bezels

Exterior

Black beltline

Black-chrome liftgate appliqué

Body-color-painted door handles

Fog lamps with Black bezels

Headlamps and taillamps with unique blackout treatment

Tuxedo Black Metallic Flex badge on leading edge of hood

Tuxedo Black Metallic-painted capped, power, heated, power-folding sideview mirrors with integrated security approach lamps and memory

Tuxedo Black Metallic-painted roof

Unique Black-chrome grille

Flex Titanium model is late availability.

¹Limited coverage in Alaska.

2011 FLEX

fordvehicles.com



Drive one.

SE & SEL



17-in. Painted Aluminum Wheels
Standard on SE



18-in. Machined Aluminum Wheels
Standard on SEL



20-in. Bright Painted
Aluminum Wheels
Included with
3.5L EcoBoost™ V6 on SEL



FLEX SEL. CHARCOAL BLACK LEATHER TRIM. AVAILABLE EQUIPMENT.



FLEX SEL. INGOT SILVER METALLIC. WHITE SUEDE ROOF. AVAILABLE EQUIPMENT.

2011 FLEX

fordvehicles.com



Drive one.

SE & SEL OPTIONAL FEATURES

SE Available Options & Packages

2nd-row cloth 40/40 split reclining bucket seats with autofold

All-weather floor mats

AM/FM stereo/6-disc in-dash CD changer, 6 speakers and SIRIUS Satellite Radio with 6-month subscription

Black roof-rack side rails

Class III Trailer Tow Package includes hitch receiver with 4,500-lb. rating, 4-/7-pin connector with wiring harness, engine oil cooler, tire mobility kit and trailer sway control

Ford SYNC® voice-activated, in-vehicle connectivity system

Two-tone roof

SE Exterior Colors	Interior Colors
White Suede	● ●
Bordeaux Reserve Red Metallic	● ●
Kona Blue Metallic	● ●
Earth Metallic	● ●
Mediterranean Blue Metallic	● ●
Ingot Silver Metallic	● ●
Tuxedo Black Metallic	● ●

Interiors: ● Medium Light Stone Cloth with houndstooth-patterned inserts ● Charcoal Black Cloth with houndstooth-patterned inserts

SEL Available Rapid Spec

Rapid Spec 201A – **Convenience Package** includes power-adjustable pedals with memory, power liftgate, memory settings for driver's seat and heated sideview mirrors, security approach lamps and 110-volt inverter

Rapid Spec 202A – Audio System from Sony® with AM/FM stereo/6-disc in-dash CD changer and 12 speakers in 10 locations + 1st- and 2nd-row leather-trimmed seating with 3rd-row vinyl + **Convenience Package**

Rapid Spec 203A – **3.5L EcoBoost™ V6** + 6-speed automatic transmission with paddle shifters + dual exhaust with chrome tips + intelligent all-wheel drive (AWD) + electric power-assisted steering + 20-in. bright-painted aluminum wheels with P255/45R20 all-season BSW tires + Audio System from Sony + 1st- and 2nd-row leather-trimmed seating with 3rd-row vinyl + **Convenience Package**

SEL Available Options & Packages

2nd-row 40/40 reclining bucket seats with autofold

2nd-row console (requires 2nd-row 40/40 reclining bucket seats, Rapid Spec 202A or 203A)

Active Park Assist (requires Rapid Spec 203A)

All-weather floor mats

Chrome roof-rack side rails (n/a with Vista Roof™)

Class III Trailer Tow Package includes hitch receiver with 4,500-lb. rating, 4-/7-pin connector with wiring harness, engine oil cooler (3.7L V6 only), tire mobility kit and trailer sway control

Dual-Headrest DVD Entertainment System includes color-matched, upholstered front headrests with integrated 7-in. adjustable monitors, top-slot-loading DVD players, with gaming ports and remote controls (requires Rapid Spec 201A, 202A or 203A)

Intelligent all-wheel drive (AWD) (included with Rapid Spec 203A)

Multipanel Vista Roof (requires Rapid Spec 201A, 202A or 203A)

Two-tone roof

INTERIOR



Medium Light Stone Cloth with Houndstooth-Patterned Inserts – Standard



Charcoal Black Cloth with Houndstooth-Patterned Inserts – Standard



Medium Light Stone Leather Available on SEL



Charcoal Black Leather Available on SEL

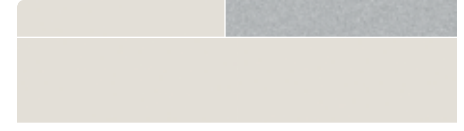
SEL Exterior Colors	Interior Colors
White Suede	● ● ● ●
Bordeaux Reserve Red Metallic	● ● ● ●
Kona Blue Metallic	● ● ● ●
Earth Metallic	● ● ● ●
Mediterranean Blue Metallic	● ● ● ●
Red Candy Metallic Tinted Clearcoat ¹	● ● ● ●
White Platinum Metallic Tri-coat ¹	● ● ● ●
Ingot Silver Metallic	● ● ● ●
Tuxedo Black Metallic	● ● ● ●

Interiors: ● Medium Light Stone Cloth with houndstooth-patterned inserts ● Charcoal Black Cloth with houndstooth-patterned inserts ■ Medium Light Stone Leather ■ Charcoal Black Leather

¹Additional charge.

Colors are representative only. See your dealer for actual paint/trim options.

EXTERIOR



White Suede 1



Bordeaux Reserve Red Metallic 2



Kona Blue Metallic 1



Earth Metallic 2



Mediterranean Blue Metallic 1



Red Candy Metallic Tinted Clearcoat 2



White Platinum Metallic Tri-coat



Ingot Silver Metallic 2



Tuxedo Black Metallic 1

Optional Two-Tone Roof

1 – Ingot Silver Metallic
2 – White Suede

2011 FLEX

fordvehicles.com



Drive one.

LIMITED



CHARCOAL BLACK LEATHER TRIM WITH PERFORATED INSERTS. AVAILABLE EQUIPMENT.



BORDEAUX RESERVE RED METALLIC. WHITE SUEDE ROOF. AVAILABLE EQUIPMENT.

2011 FLEX

fordvehicles.com



Drive one.

LIMITED OPTIONAL FEATURES

Available Rapid Spec

Rapid Spec 301A – Multipanel Vista Roof™ + 2nd-row 40/40 bucket seats + refrigerated 2nd-row console + 20-in. bright-painted aluminum wheels with P255/45R20 all-season BSW tires

Rapid Spec 302A – **3.5L EcoBoost™ V6** + 6-speed automatic transmission with paddle shifters + dual exhaust with chrome tips + intelligent all-wheel drive (AWD) + electric power-assisted steering + 20-in. bright-painted aluminum wheels with P255/45R20 all-season BSW tires

Available Options & Packages

2nd-row console (requires 2nd-row 40/40 reclining bucket seats; included with Rapid Spec 301A)

2nd-row perforated leather-trimmed 40/40 heated reclining bucket seats with autofold (included with Rapid Spec 301A)

3rd-row perforated vinyl 50/50 split bench seat with one-touch PowerFold® and tumble with tailgate feature

20-in. bright-painted aluminum wheels with P255/45R20 all-season BSW tires (included with Rapid Spec 301A and 302A)

Active Park Assist (requires Rapid Spec 302A)

All-weather floor mats

Chrome roof-rack side rails (n/a with Vista Roof)

Class III Trailer Tow Package includes hitch receiver with 4,500-lb. rating, 4-/7-pin connector with wiring harness, engine oil cooler (3.7L V6 only), tire mobility kit and trailer sway control

Dual-Headrest DVD Entertainment System includes color-matched, upholstered front headrests with integrated 7-in. adjustable monitors, top-slot-loading DVD players with gaming ports and remote controls

Intelligent all-wheel drive (AWD) (included with Rapid Spec 302A)

Multipanel Vista Roof (included with Rapid Spec 301A)

Refrigerated console (requires 2nd-row console and Rapid Spec 302A; included with Rapid Spec 301A)

Two-tone roof

Exterior Colors	Interior Colors	
White Suede	■	■
Bordeaux Reserve Red Metallic	■	■
Kona Blue Metallic	■	■
Earth Metallic	■	■
Mediterranean Blue Metallic	■	■
Red Candy Metallic Tinted Clearcoat ¹	■	■
White Platinum Metallic Tri-coat ¹	■	■
Ingot Silver Metallic	■	■
Tuxedo Black Metallic	■	■

Interiors: ■ Medium Light Stone Leather with perforated inserts
■ Charcoal Black Leather with perforated inserts

¹Additional charge.

INTERIOR



Medium Light Stone Leather with Perforated Inserts – Standard



Charcoal Black Leather with Perforated Inserts Standard

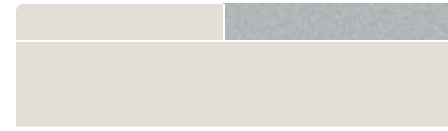


19-in. Polished Aluminum Wheels Standard



20-in. Bright-Painted Aluminum Wheels with P255/45R20 All-Season BSW Tires
Optional on Rapid Spec 300A; included with Rapid Spec 301A and 302A

EXTERIOR



White Suede 1



Bordeaux Reserve Red Metallic 2



Kona Blue Metallic 1



Earth Metallic 2



Mediterranean Blue Metallic 1



Red Candy Metallic Tinted Clearcoat 2



White Platinum Metallic Tri-coat



Ingot Silver Metallic 2



Tuxedo Black Metallic 1

Optional Two-Tone Roof

1 – Ingot Silver Metallic
2 – White Suede

Colors are representative only.
See your dealer for actual paint/trim options.

2011 FLEX

fordvehicles.com



Drive one.

TITANIUM



CHARCOAL BLACK LEATHER TRIM WITH GRAY ALCANTARA® SUEDE PERFORATED INSERTS.



RED CANDY METALLIC TINTED CLEARCOAT. TUXEDO BLACK METALLIC ROOF. AVAILABLE EQUIPMENT.

2011 FLEX

fordvehicles.com



Drive one.

TITANIUM

OPTIONAL FEATURES

Available Rapid Spec

Rapid Spec 401A – **3.5L EcoBoost™ V6** + 6-speed automatic transmission with paddle shifters + dual exhaust with chrome tips + intelligent all-wheel drive (AWD) + electric power-assisted steering

Available Options & Packages

2nd-row console (requires 2nd-row 40/40 reclining bucket seats)

2nd-row perforated leather-trimmed 40/40 reclining bucket seats with Gray Alcantara® suede perforated inserts and autofold

3rd-row perforated vinyl 50/50 split bench seat with Gray Alcantara suede perforated inserts, one-touch PowerFold® and tumble with tailgate feature

Active Park Assist (requires Rapid Spec 401A)

All-weather floor mats

Black roof-rack side rails (n/a with Vista Roof™)

Class III Trailer Tow Package includes hitch receiver with 4,500-lb. rating, 4-/7-pin connector with wiring harness, engine oil cooler (3.7L V6 only), tire mobility kit and trailer sway control

Dual-Headrest DVD Entertainment System includes color-matched, upholstered front headrests with integrated 7-in. adjustable monitors, top-slot-loading DVD players with gaming ports and remote controls

Intelligent all-wheel drive (AWD) (included with Rapid Spec 401A)

Multipanel Vista Roof

Refrigerated console (requires 2nd-row console)

Exterior Colors

Red Candy Metallic Tinted Clearcoat¹

White Platinum Metallic Tri-coat¹

Ingot Silver Metallic

Tuxedo Black Metallic

Interior Colors

Interiors: ■ Charcoal Black Leather with Gray Alcantara Suede perforated inserts

¹Additional charge.

INTERIOR

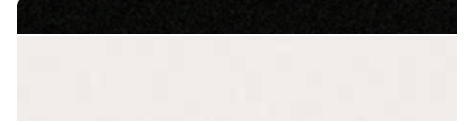


Charcoal Black Leather with Gray Alcantara Suede Perforated Inserts – Standard

EXTERIOR



Red Candy Metallic Tinted Clearcoat 1



White Platinum Metallic Tri-coat 1



Ingot Silver Metallic 1



Tuxedo Black Metallic 1

Standard Two-Tone Roof

1 – Tuxedo Black Metallic



20-in. Polished Aluminum Wheels Standard

Colors are representative only. See your dealer for actual paint/trim options.

Flex Titanium model is late availability.

ENHANCE YOUR LIFE WITH AVAILABLE TECHNOLOGIES



Audio System from Sony®



Refrigerated 2nd-Row Console



SIRIUS Satellite Radio¹



Ambient Lighting¹



Rear View Camera¹



Power-Adjustable Pedals



Power Liftgate

¹Shown with available Navigation System.

2011 FLEX

fordvehicles.com



Drive one.



Illuminated Door Sill Plates



Soft Cargo Organizers
(Large and Standard Sizes)



Racks and Carriers by THULE^{1,2}



20-in. Polished Wheels



Hood Deflector, Side Window Deflectors, Rack and Carrier by THULE^{1,2} and Graphics Kit



Sport Pedals



Remote Start Systems



All-Weather Floor Mats
(also available for 3rd row)

Also available:

APPEARANCE

- Ford Custom Graphics by Original Wraps,TM Inc.¹
- Rear Spoiler
- Exterior Trim Kit by Sherwood¹

ELECTRONICS

- Vehicle Security System
- HitchScanTM Rear Park Assist Sensor and Hitch Step by EchoMaster^{®1}
- Forward or Reverse Parking Assist System by EchoMaster^{®1}
- GPS Tracking and Recovery by SmartAlert^{TM1}
- Dual Headrest DVD by INVISION^{TM1}
- Wiper De-Icer and Debris Cleaner by Wiper Shaker¹
- Portable Navigation Systems by Garmin^{®1}
- Interior Light Kit

EXTERIOR

- Locking Fuel Plug
- Splash Guards
- Chrome Hitch Balls/Drawbars
- Trailer Hitch Wiring Harness
- Sportz[®] SUV Tents by Napier¹
- Trailer Hitch Assembly

INTERIOR


- Leather-Trimmed Interior Seating by Katzkin^{®1}
- Conversation Mirror
- Stainless Steel Door Sill Plates
- Soft Cargo Cooler Bag
- Ash Cup/Coin Holder
- Interior Trim Kit by Sherwood¹
- Cargo Area Protector

WHEELS

- Wheel Locks

¹Ford Licensed Accessories. ²Only available for vehicles with roof-rack side rails.
THULE is a registered trademark of Thule Sweden AB. SmartAlert is a registered trademark of Inilex, Inc.
INVISION is a trademark of Audiovox Corporation. Garmin is a registered trademark of Garmin Ltd.

To learn more about Ford Custom Accessories and to shop online, visit fordaccessories.com.

 Genuine Ford Accessories will be warranted for whichever provides you the greatest benefit: 12 months or 12,000 miles (whichever occurs first), or the remainder of your Bumper-to-Bumper 3-year/36,000-mile New Vehicle Limited Warranty. Contact your local Ford Dealer for details and a copy of the limited warranty. Ford Licensed Accessories (FLA) are warranted by the accessory manufacturer's warranty. Ford Licensed Accessories are fully designed and developed by the accessory manufacturer and have not been designed or tested to Ford Motor Company engineering requirements. Contact your Ford Dealer for details regarding the manufacturer's limited warranty and/or a copy of the FLA product limited warranty offered by the accessory manufacturer.



2011 FLEX

fordvehicles.com

